

Lava Fire

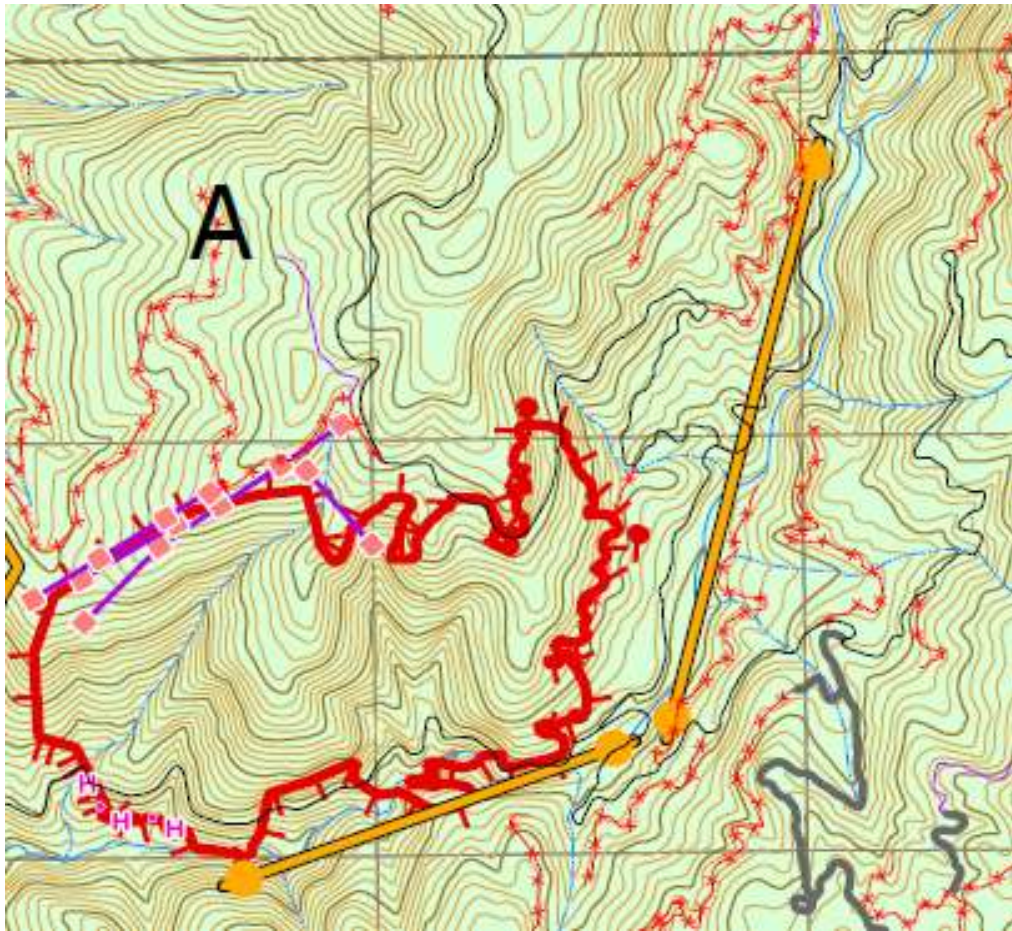
**FS: P4R7TH (0402) BLM:
ID-BOF-001080**

Incident Commander

Colter Stewart

Incident Commander (T)

Safety



Operational Period

Day/Night Shift

September 6, 2024

0600-2200

Incident Objectives	1. Incident Name		2. Date Prepared	3. Time Prepared
	<i>Lava Fire</i>		<i>September 6, 2024</i>	<i>19:00</i>
4. Operational Period	September 6, 2024	0600-2200		
5. General Control Objectives for the Incident (include Alternatives)				
1 <i>Keep fire South of Third Fork Ridge</i>				
2 <i>Keep fire North of ridge south of Third Fork Chief Eagle Eye Creek</i>				
3 <i>Keep fire East of Chief Eagle Eye Creek</i>				
4 <i>Keep Fire West of Third Fork Chief Eagle Eye Creek</i>				
5				
6				
7				
8				
6. Weather Forecast for Operational Period				NOAA Fire Wx Zones
7. Safety				
<i>Steep terrain will pose a hazard for the duration of the incident. Watch out for rolling material and snags.</i>				
8. Attachments (check if attached)				
X 202	206	X 220		
X 203	Safety Message	Map		
X 204	215 A			
X Comm	214			
ICS-202	9. Prepared by		10. Approved by (IC)	
	<i>Ryan Shannahan PSC3</i>		<i>/s/ Colter Stewart</i>	

2. Date	September 6, 2024	3. Time	0600-2200	Deputy	
4. Operational Period	Day/Night Shift		A. Branch I - Division/Groups		
5. Incident Commander and Staff			Branch Director		
Incident Commander	Colter Stewart		Deputy		
Deputy			Division/Group		
Safety Officer			Division/Group		
Information Officer			Division/Group		
Liaison Officer			Division/Group		
6. Agency Representative			Division/Group		
Agency	Name		B. Branch II - Division/Groups		
Boise NF Agency Administrator	David Francomb		Branch Director		
			Deputy		
Emmett District Acting Ranger	Dave Romero		Division/Group		
			Division/Group		
District Duty Officer	Rory Anderton		Division/Group		
North Zone FMO	Ryan Shannahan		Division/Group		
			Division/Group		
			C. Branch III - Division/Groups		
			Branch Director		
			Deputy		
			Division/Group		
7. Planning Section			Division/Group		
Chief			Division/Group		
Deputy			Division/Group		
Resource Unit			Division/Group		
Situation Unit			D. Air Operations Branch		
Documentation Unit			Air Operations Branch Director		
Demobilization Unit			Air Attack Supervisor		
Technical Specialists			Air Attack Supervisor		
Human Resources			Helicopter Coordinator		
Training			Air Tanker Coordinator		
Check-in			Helicopter Manager - 64H		
			Helicopter Manager - 5LM		
			10. Finance Section		
			Chief		
			Deputy		
			Time Unit		
8. Logistics Section			Procurement Unit		
Chief			Comp/Claims Unit		
Deputy			Cost Unit		
Supply Unit					
Facilities Unit			Prepared by (Planning Section Chief)		

DIVISION ASSIGNMENT LIST		1. IC Name		2. Division/Group		
		<i>Colter Stewart</i>		A		
3. Incident Name		4. Operational Period				
<i>Lava Fire</i>		Date: <i>September 6, 2024</i>		Time: <i>0600-2200</i>		
Garden Valley						
Operations Chief		Division/Group Supervisor				
Safety Officer		Air Attack Supervisor				
6. Resources Assigned this Period						
Strike Team/Task Force/Resource Designator	Leader	Number Persons	Trans. Needed	Reporting Location	Drop oFff Pt./Time	Pick Up PT./Time
<i>CRW1 Blue Ridge IHC</i>		<i>20</i>	<i>No</i>	<i>Spike Camp</i>	<i>600</i>	<i>2000</i>
<i>CRW2 Tri-Cities Forestry</i>		<i>20</i>	<i>No</i>	<i>Spike Camp</i>	<i>600</i>	<i>2000</i>
<i>CRW2 Cabrera Contracting</i>		<i>20</i>	<i>No</i>	<i>Spike Camp</i>	<i>600</i>	<i>2000</i>
<i>Alpine 7 Engine</i>		<i>3</i>	<i>No</i>	<i>Spike Camp</i>	<i>600</i>	<i>2000</i>
<i>ENG4 Frenchglen 2424</i>	<i>Milewski</i>	<i>8</i>	<i>No</i>	<i>Spike Camp</i>	<i>600</i>	<i>2000</i>
<i>ENG3 PR-OCF 317</i>	<i>O'Connor</i>	<i>5</i>	<i>No</i>	<i>Spike Camp</i>	<i>600</i>	<i>2000</i>
<i>ENG4 Frenchglen 2424</i>	<i>Milewski</i>	<i>8</i>	<i>No</i>	<i>Spike Camp</i>	<i>600</i>	<i>2000</i>
<i>ENG6 3648</i>	<i>Bryan</i>	<i>3</i>	<i>No</i>	<i>Spike Camp</i>	<i>600</i>	<i>2000</i>
<i>ENG4 BLM Fort Rock</i>	<i>Funk</i>	<i>5</i>	<i>No</i>	<i>Spike Camp</i>	<i>600</i>	<i>2000</i>
<i>ENG6 OR-PRD 5628</i>	<i>Day</i>	<i>4</i>	<i>No</i>	<i>Spike Camp</i>	<i>600</i>	<i>2000</i>
<i>TFLD</i>	<i>Quintero</i>	<i>1</i>	<i>No</i>	<i>Spike Camp</i>	<i>600</i>	<i>2000</i>
<i>TFLD (T)</i>	<i>Brooks</i>	<i>1</i>	<i>No</i>	<i>Spike Camp</i>	<i>600</i>	<i>2000</i>
7. Control Operations						
Secure perimeter utilizing direct tactics and aerial support.						
8. Special Instructions						
9. Division/Group Communication Summary						
Function	Channel	Frequency RX	Frequency TX	Tone	Assignment	Remarks
Command						
Tactical		See Comm Plan				
Air/Ground						
EMS 2						
Prepared by		Approved by		Date		Time
<i>Ryan Shannahan PSC3</i>		<i>Colter Stewart</i>		<i>September 6, 2024</i>		<i>19:00</i>

DIVISION ASSIGNMENT LIST		1. IC Name		2. Division/Group		
		<i>Colter Stewart</i>		Z		
3. Incident Name		4. Operational Period				
<i>Lava Fire</i>		Date: <i>September 6, 2024</i>		Time: <i>0600-2200</i>		
Garden Valley						
Operations Chief		Division/Group Supervisor		<i>Andrew Nielsen</i>		
Safety Officer		Air Attack Supervisor				
6. Resources Assigned this Period						
Strike Team/Task Force/Resource Designator	Leader	Number Persons	Trans. Needed	Reporting Location	Drop oFff Pt./Time	Pick Up PT./Time
<i>CR2I Boise NF Crew 3</i>	<i>Streff</i>	<i>15</i>	<i>No</i>	<i>Spike Camp</i>	<i>600</i>	<i>2000</i>
<i>CRW1 Gila IHC</i>		<i>20</i>	<i>No</i>	<i>Spike Camp</i>	<i>600</i>	<i>2000</i>
<i>CRW1 Ventana IHC</i>		<i>20</i>	<i>No</i>	<i>Spike Camp</i>	<i>600</i>	<i>2000</i>
7. Control Operations						
<i>Secure perimeter utilizing direct tactics and aerial support.</i>						
8. Special Instructions						
9. Division/Group Communication Summary						
Function	Channel	Frequency RX	Frequency TX	Tone	Assignment	Remarks
Command						
Tactical		See Comm Plan				
Air/Ground						
EMS 2						
Prepared by <i>Ryan Shannahan PSC3</i>		Approved by <i>Colter Stewart</i>		Date <i>September 6, 2024</i>		Time <i>19:00</i>

INCIDENT RADIO COMMUNICATIONS PLAN		Incident Name		Prepared Date / Time		Operational Period Date / Time	
		Lava Fire		September 6, 2024	19:00	September 6, 2024	0700-2100
4. Basic Radio Channel Utilization							
Function	CH.	Frequency/Tone		Assignment		Remarks	
COMMAND TAC	1	171.4500 RX CG	171.4500 TX CG	Command 1		BOF N Dir	
COMMAND	2	171.4500 RX CG	164.1625 TX 156.70 CG	Command 1		BOF N Rep	
	3	154.2950 RX CG	154.2950 TX CG	UNASSIGNED		Boise County Tac	
	4	172.2000 RX CG	165.4125 TX CG	UNASSIGNED		BOF S Rep	
	5	159.4500 RX CG	151.3100 TX CG	UNASSIGNED		SITPA Rep	
	6	159.2700 RX CG	159.2700 TX CG	UNASSIGNED		Direct 6	
A/G	7	151.1450 RX CG	151.1450 TX CG	UNASSIGNED		A/G IDL	
A/G	8	167.9875 RX CG	167.9875 TX CG	A/G Primary		A/G 17	
A/G	9	167.6500 RX CG	167.6500 TX CG	UNASSIGNED		A/G 45	
	10	155.1000 RX CG	158.8650 TX CG	UNASSIGNED		Crown Point (Gem)	
	11	168.7750 RX CG	164.9125 TX CG	UNASSIGNED		FS SOA Rep	
	12	168.7500 RX CG	168.7500 TX CG	UNASSIGNED		FS SOA Dir	
TAC	13	168.7500 RX CG	168.7500 TX CG	Tac 1		BOF TAC 1	
TAC	14	166.8875 RX CG	166.8875 TX CG	UNASSIGNED		R4 TAC 2	
AIRGUARD	15	168.6250 RX CG	168.6250 TX CG	AIRGUARD		Air Guard	
EMS	16	155.2800 RX CG	155.2800 TX CG	EMS		State Comm F2	
5. Prepared by Ryan Shannahan PSC3							