

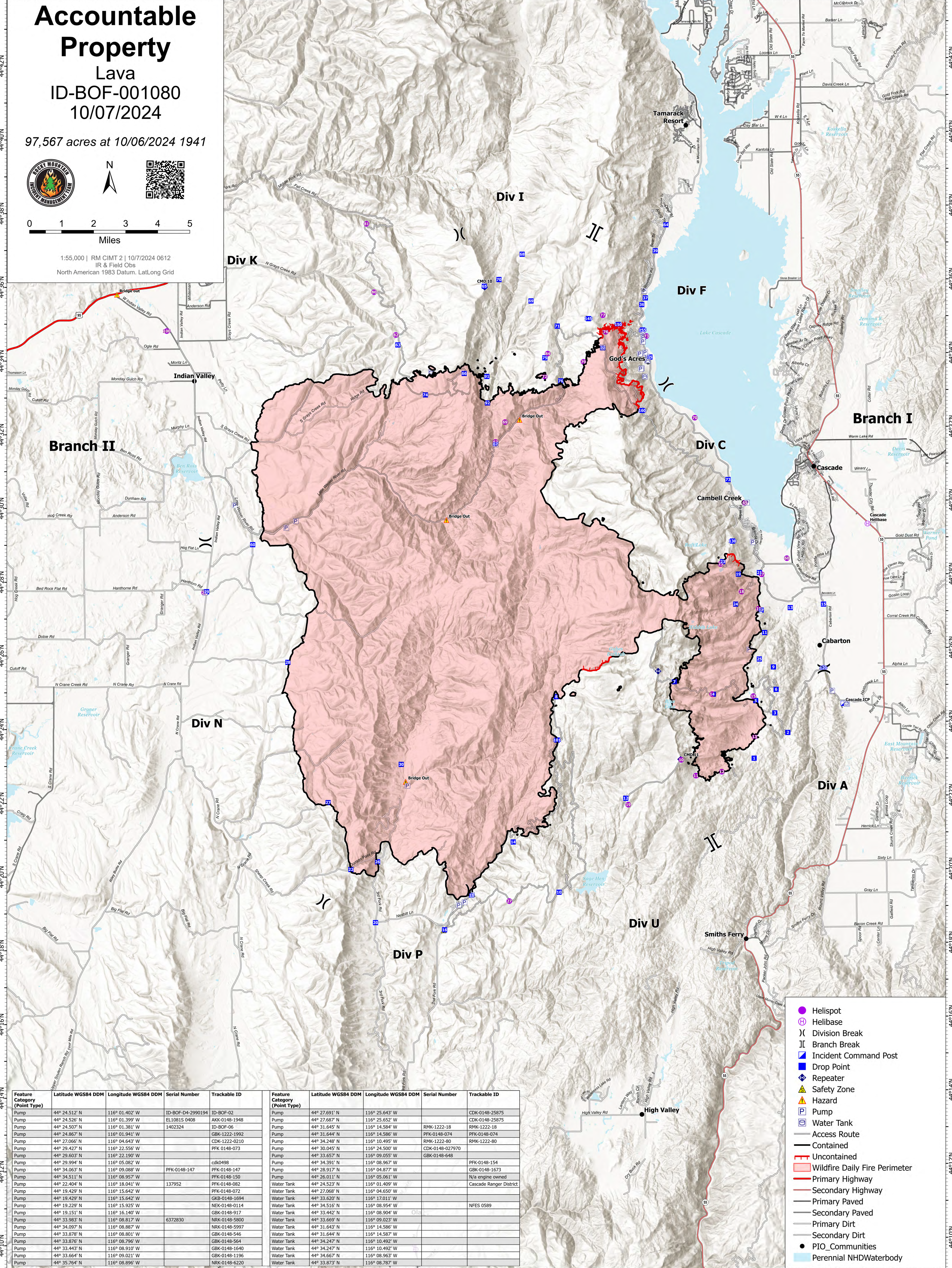
# Accountable Property

Lava  
ID-BOF-001080  
10/07/2024

97,567 acres at 10/06/2024 1941



1:55,000 | RM CIMT 2 | 10/7/2024 0612  
IR & Field Obs  
North American 1983 Datum, LatLong Grid



- Helispot
- ⊗ Helibase
- ⌋ Division Break
- ⌋ Branch Break
- Incident Command Post
- Drop Point
- ⬇ Repeater
- ⚠ Safety Zone
- ⚠ Hazard
- P Pump
- P Water Tank
- Access Route
- Contained
- Uncontained
- Wildfire Daily Fire Perimeter
- Primary Highway
- Secondary Highway
- Primary Paved
- Secondary Paved
- Primary Dirt
- Secondary Dirt
- PIO Communities
- Perennial NHDWaterbody

Feature Category (Point Type)	Latitude WGS84 DDM	Longitude WGS84 DDM	Serial Number	Trackable ID	Feature Category (Point Type)	Latitude WGS84 DDM	Longitude WGS84 DDM	Serial Number	Trackable ID
Pump	44° 24.512' N	116° 01.402' W	ID-BOF-D4-2990194	ID-BOF-02	Pump	44° 27.691' N	116° 25.643' W	CDK-0148-25875	
Pump	44° 24.526' N	116° 01.399' W	EL10815 0408	AKK-0148-1948	Pump	44° 27.687' N	116° 25.652' W	CDK-0148-25875	
Pump	44° 24.507' N	116° 01.381' W	1402324	ID-BOF-06	Pump	44° 31.645' N	116° 14.584' W	RMK-1222-18	RMK-1222-18
Pump	44° 24.866' N	116° 01.941' W		GBK-1222-1992	Pump	44° 31.644' N	116° 14.586' W	PFK-0148-074	PFK-0148-074
Pump	44° 27.066' N	116° 04.643' W		CDK-1222-0210	Pump	44° 34.248' N	116° 10.495' W	RMK-1222-80	RMK-1222-80
Pump	44° 29.427' N	116° 22.556' W		PFK 0148-073	Pump	44° 30.045' N	116° 24.500' W	CDK-0148-027970	
Pump	44° 29.603' N	116° 22.190' W			Pump	44° 33.657' N	116° 09.055' W	GBK-0148-648	
Pump	44° 29.994' N	116° 05.082' W		cdk0498	Pump	44° 34.391' N	116° 08.967' W		PFK-0148-154
Pump	44° 34.063' N	116° 09.088' W	PFK-0148-147	PFK-0148-147	Pump	44° 28.917' N	116° 04.877' W		GBK-0148-1673
Pump	44° 34.511' N	116° 08.957' W		PFK-0148-150	Pump	44° 26.011' N	116° 05.061' W		N/A engine owned
Pump	44° 22.404' N	116° 18.041' W	137952	PFK-0148-082	Water Tank	44° 24.523' N	116° 01.409' W		Cascade Ranger District
Pump	44° 19.429' N	116° 15.642' W		PFK-0148-072	Water Tank	44° 27.068' N	116° 04.650' W		
Pump	44° 19.429' N	116° 15.642' W		GBK-0148-1694	Water Tank	44° 33.620' N	116° 17.011' W		
Pump	44° 19.229' N	116° 15.925' W		NEK-0148-0114	Water Tank	44° 34.516' N	116° 08.954' W		NFES 0589
Pump	44° 19.151' N	116° 16.140' W		GBK-0148-917	Water Tank	44° 33.442' N	116° 08.904' W		
Pump	44° 33.983' N	116° 08.817' W	6372830	NRK-0148-5800	Water Tank	44° 33.669' N	116° 09.023' W		
Pump	44° 34.097' N	116° 08.887' W		NRK-0148-5997	Water Tank	44° 31.643' N	116° 14.586' W		
Pump	44° 33.878' N	116° 08.801' W		GBK-0148-546	Water Tank	44° 31.644' N	116° 14.587' W		
Pump	44° 33.876' N	116° 08.796' W		GBK-0148-564	Water Tank	44° 34.247' N	116° 10.492' W		
Pump	44° 33.443' N	116° 08.910' W		GBK-0148-1640	Water Tank	44° 34.247' N	116° 10.492' W		
Pump	44° 33.664' N	116° 09.021' W		GBK-0148-1196	Water Tank	44° 34.667' N	116° 08.963' W		
Pump	44° 35.764' N	116° 08.896' W		NRK-0148-6220	Water Tank	44° 33.873' N	116° 08.787' W		