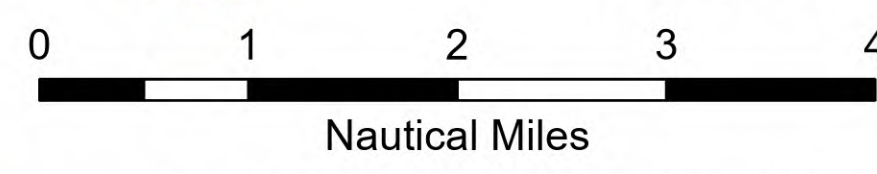
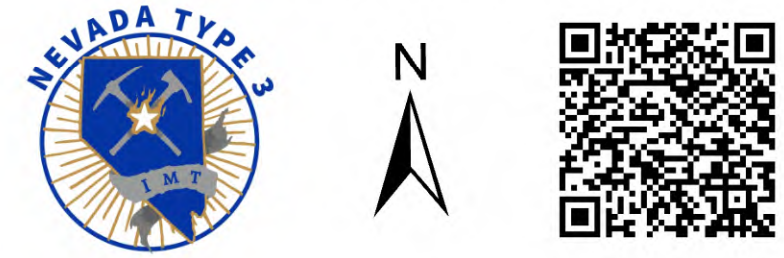


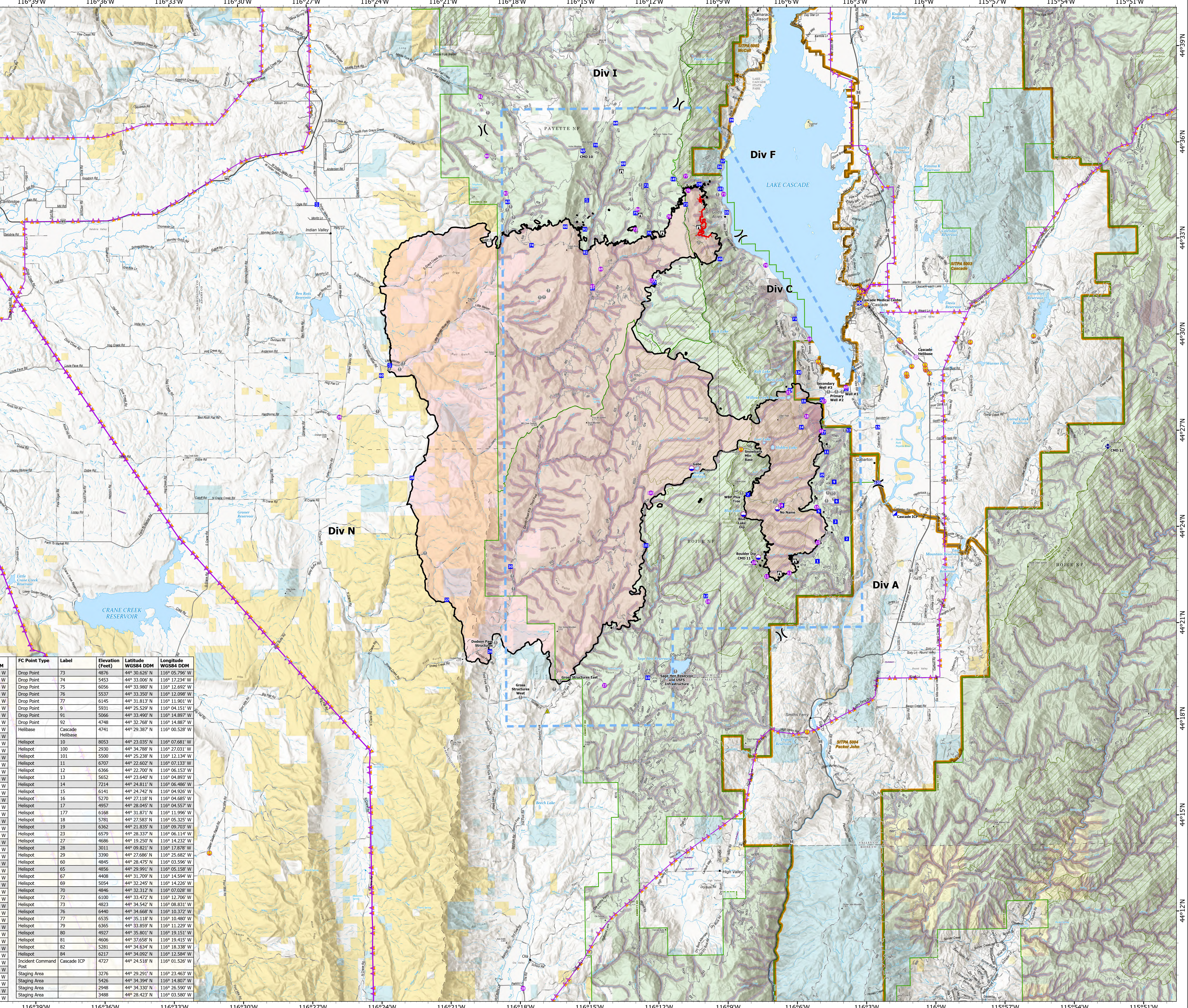
# Air Ops

Lava  
ID-BOF-001080  
As of 10/20/2024

97,585 acres at 10/18/2024 @ 2039  
97% containment



- Aerial Hazard
- Helispot
- Helibase
- Division Break
- Medical
- Incident Command Post
- Drop Point
- Staging Area
- Lookout
- Value at Risk
- Repeater
- Safety Zone
- Dip Site
- Aerial Hazard
- Temporary Flight Restriction
- Contained
- Uncontained
- Primary Highway
- Secondary Highway
- Paved Road
- Dirt Road
- High Clearance Road
- Wildfire Daily Fire Perimeter
- Fire Retardant Avoidance Areas
- SITPA
- USFS Roadless Areas
- Ranger District Boundary
- Proclaimed FS Boundary
- County or Equivalent
- Bureau of Land Management (BLM)
- Bureau of Reclamation (BOR)
- State
- US Forest Service (USFS)
- Private



FC Point Type	Label	Elevation (Feet)	Latitude WGS84 DDM	Longitude WGS84 DDM	FC Point Type	Label	Elevation (Feet)	Latitude WGS84 DDM	Longitude WGS84 DDM
Dip Site	Blue Lake Dip	7316	44° 24.543' N	116° 08.116' W	Drop Point	73	4876	44° 30.626' N	116° 05.796' W
Dip Site	Boulder Dip	7263	44° 23.200' N	116° 07.487' W	Drop Point	74	5453	44° 33.006' N	116° 17.234' W
Dip Site	Gate	6933	44° 25.996' N	116° 10.352' W	Drop Point	75	6056	44° 33.380' N	116° 12.692' W
Dip Site	No Name	7035	44° 24.704' N	116° 06.632' W	Drop Point	76	5537	44° 33.359' N	116° 12.098' W
Drop Point	1	5901	44° 23.057' N	116° 04.919' W	Drop Point	77	6145	44° 31.813' N	116° 11.901' W
Drop Point	10	5089	44° 19.478' N	116° 12.351' W	Drop Point	9	5931	44° 25.529' N	116° 04.151' W
Drop Point	101	5309	44° 23.604' N	116° 12.370' W	Drop Point	91	5066	44° 33.490' N	116° 14.897' W
Drop Point	11	5598	44° 26.464' N	116° 04.470' W	Drop Point	92	4748	44° 32.768' N	116° 14.887' W
Drop Point	12	6362	44° 22.010' N	116° 09.794' W	Helibase	Cascade Helibase	4741	44° 29.387' N	116° 00.528' W
Drop Point	120	4700	44° 25.488' N	116° 02.263' W	Helispot	10	8053	44° 23.035' N	116° 07.681' W
Drop Point	13	4912	44° 27.135' N	116° 03.489' W	Helispot	100	2930	44° 34.788' N	116° 27.031' W
Drop Point	130	6040	44° 28.955' N	116° 05.651' W	Helispot	101	5500	44° 25.238' N	116° 12.134' W
Drop Point	145	6780	44° 35.029' N	116° 11.024' W	Helispot	11	6707	44° 22.602' N	116° 07.133' W
Drop Point	15	4791	44° 27.219' N	116° 02.228' W	Helispot	12	6366	44° 22.700' N	116° 06.153' W
Drop Point	150	5800	44° 34.860' N	116° 09.895' W	Helispot	13	5652	44° 23.640' N	116° 04.893' W
Drop Point	155	4500	44° 34.706' N	116° 08.976' W	Helispot	14	7214	44° 24.811' N	116° 06.486' W
Drop Point	160	6300	44° 32.524' N	116° 09.020' W	Helispot	15	6141	44° 24.742' N	116° 04.926' W
Drop Point	17	5283	44° 27.076' N	116° 04.593' W	Helispot	16	5270	44° 27.118' N	116° 04.685' W
Drop Point	19	5910	44° 28.057' N	116° 05.439' W	Helispot	17	4957	44° 28.945' N	116° 04.527' W
Drop Point	2	5361	44° 23.744' N	116° 03.635' W	Helispot	177	6168	44° 31.871' N	116° 11.996' W
Drop Point	21	4973	44° 28.093' N	116° 04.640' W	Helispot	18	5781	44° 27.583' N	116° 05.325' W
Drop Point	23	6549	44° 28.400' N	116° 06.031' W	Helispot	19	6362	44° 21.835' N	116° 09.703' W
Drop Point	24	6279	44° 27.246' N	116° 05.557' W	Helispot	23	6579	44° 28.337' N	116° 06.114' W
Drop Point	25	6068	44° 25.747' N	116° 04.680' W	Helispot	27	4686	44° 19.250' N	116° 14.232' W
Drop Point	26	3730	44° 20.344' N	116° 19.197' W	Helispot	28	3011	44° 09.821' N	116° 17.878' W
Drop Point	27	4675	44° 21.965' N	116° 21.052' W	Helispot	29	3390	44° 27.686' N	116° 25.682' W
Drop Point	28	3638	44° 25.777' N	116° 22.532' W	Helispot	60	4845	44° 28.475' N	116° 03.596' W
Drop Point	3	5825	44° 24.282' N	116° 04.118' W	Helispot	65	4856	44° 29.591' N	116° 05.158' W
Drop Point	30	3795	44° 22.984' N	116° 18.271' W	Helispot	67	4408	44° 31.709' N	116° 14.594' W
Drop Point	35	4856	44° 33.972' N	116° 08.706' W	Helispot	69	5054	44° 32.245' N	116° 14.226' W
Drop Point	36	4878	44° 35.396' N	116° 08.895' W	Helispot	70	4846	44° 32.312' N	116° 07.028' W
Drop Point	37	4870	44° 35.575' N	116° 08.859' W	Helispot	72	6100	44° 33.472' N	116° 12.706' W
Drop Point	39	4857	44° 36.853' N	116° 08.462' W	Helispot	73	4823	44° 34.542' N	116° 08.831' W
Drop Point	4	7202	44° 24.807' N	116° 06.440' W	Helispot	76	6440	44° 34.668' N	116° 10.372' W
Drop Point	5	6117	44° 24.619' N	116° 04.836' W	Helispot	77	6535	44° 35.118' N	116° 10.480' W
Drop Point	6	5769	44° 24.920' N	116° 04.058' W	Helispot	79	6365	44° 33.859' N	116° 11.229' W
Drop Point	60	3488	44° 28.977' N	116° 23.831' W	Helispot	80	4927	44° 35.801' N	116° 19.151' W
Drop Point	63	5236	44° 34.365' N	116° 18.263' W	Helispot	81	4606	44° 37.658' N	116° 18.415' W
Drop Point	65	7253	44° 35.937' N	116° 14.961' W	Helispot	82	5281	44° 34.634' N	116° 18.338' W
Drop Point	66	6089	44° 33.577' N	116° 15.757' W	Helispot	84	6217	44° 34.092' N	116° 12.584' W
Drop Point	67	4266	44° 31.651' N	116° 14.596' W	Incident Command Post	Cascade ICP	4727	44° 24.518' N	116° 01.526' W
Drop Point	68	6069	44° 36.796' N	116° 13.516' W	Staging Area	3276	44° 29.291' N	116° 23.463' W	
Drop Point	69	6393	44° 35.523' N	116° 13.197' W	Staging Area	5426	44° 34.394' N	116° 14.807' W	
Drop Point	7	7699	44° 25.157' N	116° 07.909' W	Staging Area	2948	44° 34.330' N	116° 26.590' W	
Drop Point	70	6336	44° 36.114' N	116° 14.405' W	Staging Area	3488	44° 28.423' N	116° 03.580' W	
Drop Point	71	6005	44° 34.835' N	116° 12.211' W					
Drop Point	72	6667	44° 34.236' N	116° 10.494' W					