

116°27.5'W 116°26.5'W 116°25.5'W 116°24.5'W 116°23.5'W 116°22.5'W 116°21.5'W 116°20.5'W 116°19.5'W 116°18.5'W 116°17.5'W 116°16.5'W 116°15.5'W 116°14.5'W 116°13.5'W 116°12.5'W 116°11.5'W 116°10.5'W 116°9.5'W 116°8.5'W 116°7.5'W 116°6.5'W 116°5.5'W 116°4.5'W 116°3.5'W 116°2.5'W 116°1.5'W 116°0.5'W 115°59.5'W


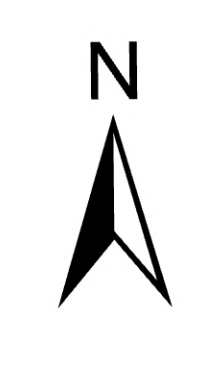

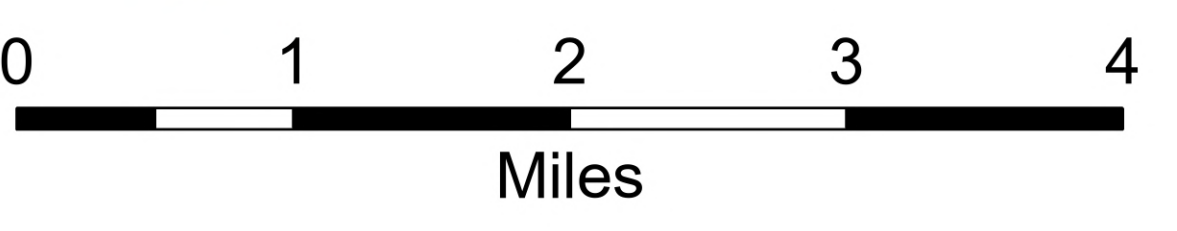
# Briefing

## Lava

### ID-BOF-001080

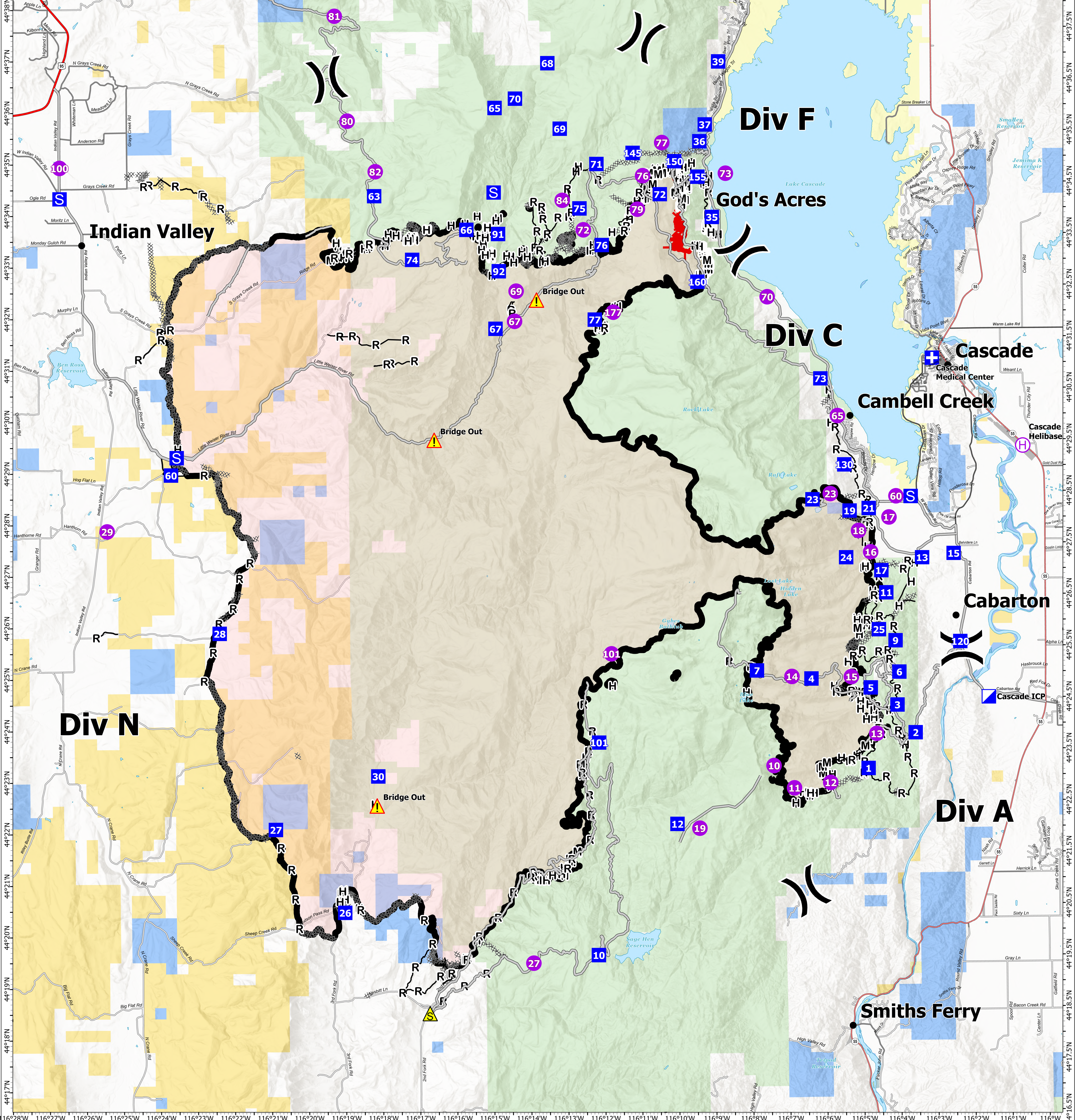
#### As of 10/20/2024

97,585 acres at 10/18/2024 @ 2039

1:44,000 | NV IMT 1 Type 3 | 10/20/2024 0820  
Acres from IR  
North American 1983 Datum, LatLong Grid

- Communities
- Helispot
- Helibase
- ⊕ Division Break
- ⊕ Medical
- ⊕ Incident Command Post
- ⊕ Staging Area
- ⊕ Safety Zone
- ⊕ Hazard
- ⊕ Wildfire Daily Fire Perimeter
- ⊕ Completed Dozer Line
- ⊕ Completed Hand Line
- ⊕ Completed Mixed Construction Line
- ⊕ Completed Road as Line
- Access Route
- Contained
- Uncontained
- Primary Highway
- Secondary Highway
- Primary Paved
- Secondary Paved
- Primary Dirt
- Secondary Dirt
- Bureau of Land Management
- Bureau of Reclamation
- Forest Service
- Private
- State
- State: Fish and Game
- Local Gov
- Historic Water



116°28'W 116°27'W 116°26'W 116°25'W 116°24'W 116°23'W 116°22'W 116°21'W 116°20'W 116°19'W 116°18'W 116°17'W 116°16'W 116°15'W 116°14'W 116°13'W 116°12'W 116°11'W 116°10'W 116°9'W 116°8'W 116°7'W 116°6'W 116°5'W 116°4'W 116°3'W 116°2'W 116°1'W 116°W