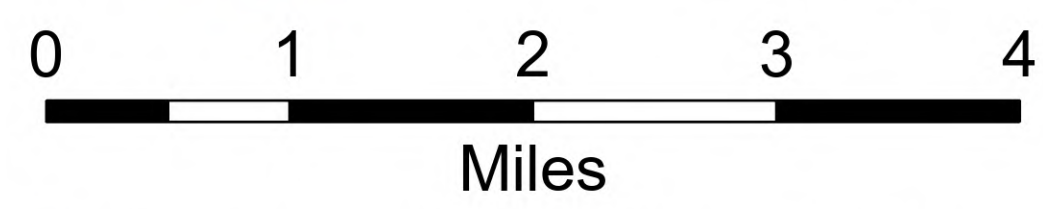


Operations

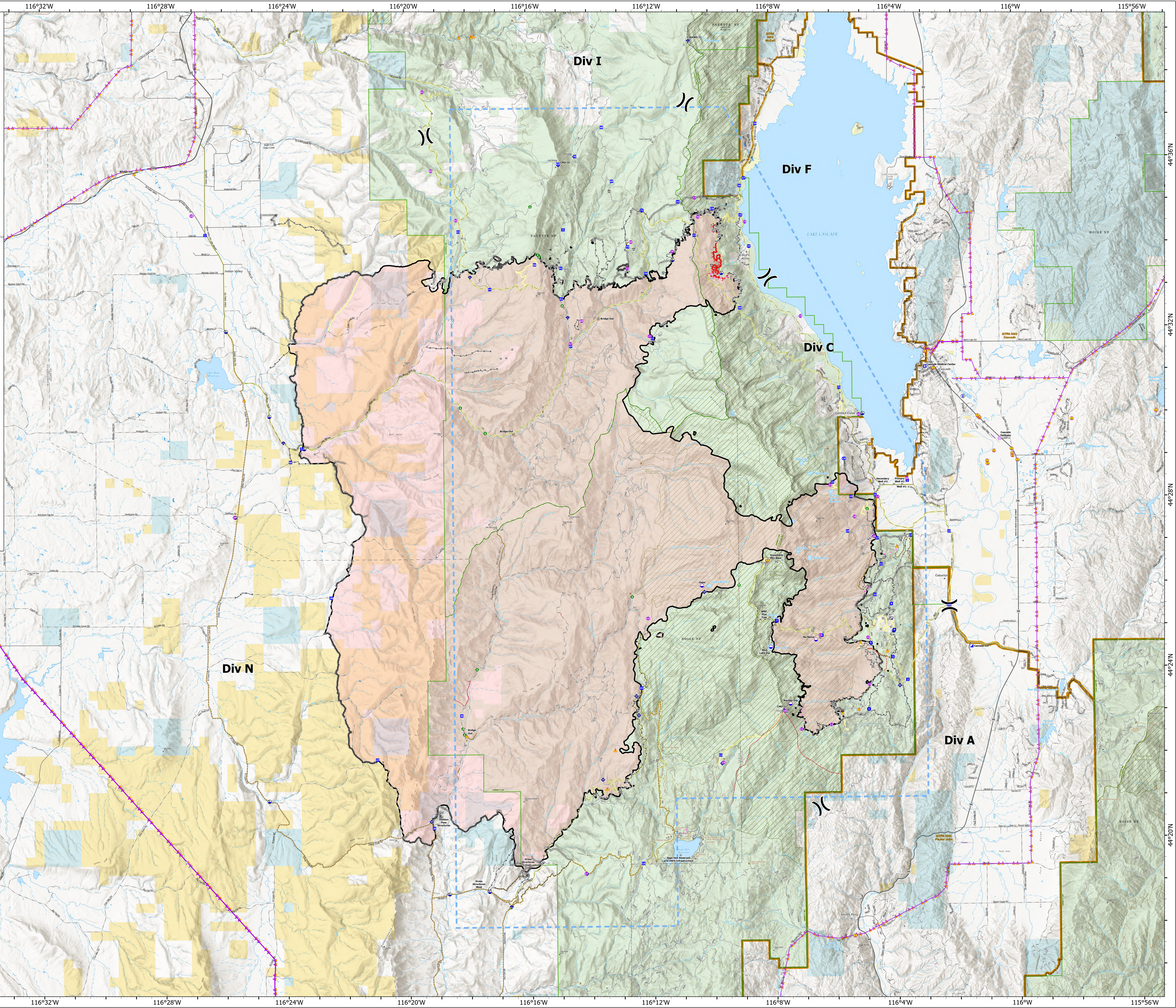
Lava
ID-BOF-001080
As of 10/20/2024

97,585 acres at 10/18/2024 @ 2039
97% containment



150,000 | NV MT 1 Type 2 | 10/20/2024 08:21 | Acres from IR | North American 1983 Datum, LatLong Grid

- Aerial Hazard
- Helispot
- Helibase
- Division Break
- Medical
- Incident Command Post
- Drop Point
- Staging Area
- Lookout
- Value at Risk
- Landmark
- Gate
- Bridge
- Structure Wrap
- Landing or Log Deck
- Hazard Tree
- Mobile Weather Unit
- Internet Access
- Repeater
- Safety Zone
- Hazard
- Dip Site
- Draft Site
- Hydrant
- Mine Hazard
- Communities
- Completed Dozer Line
- Completed Hand Line
- Completed Mixed Construction Line
- Completed Road as Line
- Planned Hand Line
- Planned Mixed Construction Line
- Planned Plow Line
- Planned Road as Line
- Fence
- Other
- Repair Line
- Road Repair
- Aerial Hazard
- Temporary Flight Restriction
- Contained
- Uncontained
- Access Route
- Primary Highway
- Secondary Highway
- Paved Road
- Dirt Road
- High Clearance Road
- Trail
- Wildfire Daily Fire Perimeter
- SITPA
- USFS Roadless Areas
- County or Equivalent
- Ranger District
- Boundary
- Proclaimed FS Boundary
- Bureau of Land Management (BLM)
- Bureau of Reclamation (BOR)
- State
- US Forest Service (USFS)
- Private



116°36'W 116°32'W 116°28'W 116°24'W 116°20'W 116°16'W 116°12'W 116°8'W 116°4'W 116°W 115°56'W

44°36'N 44°32'N 44°28'N 44°24'N 44°20'N

44°36'N 44°32'N 44°28'N 44°24'N 44°20'N