

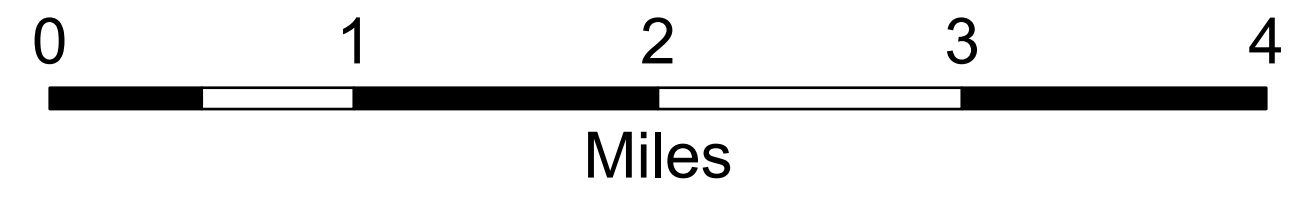
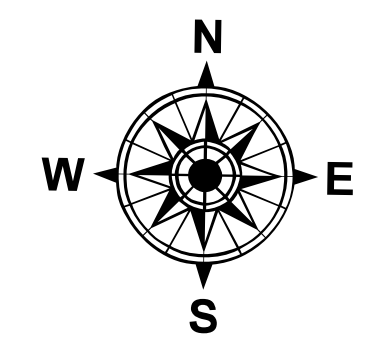
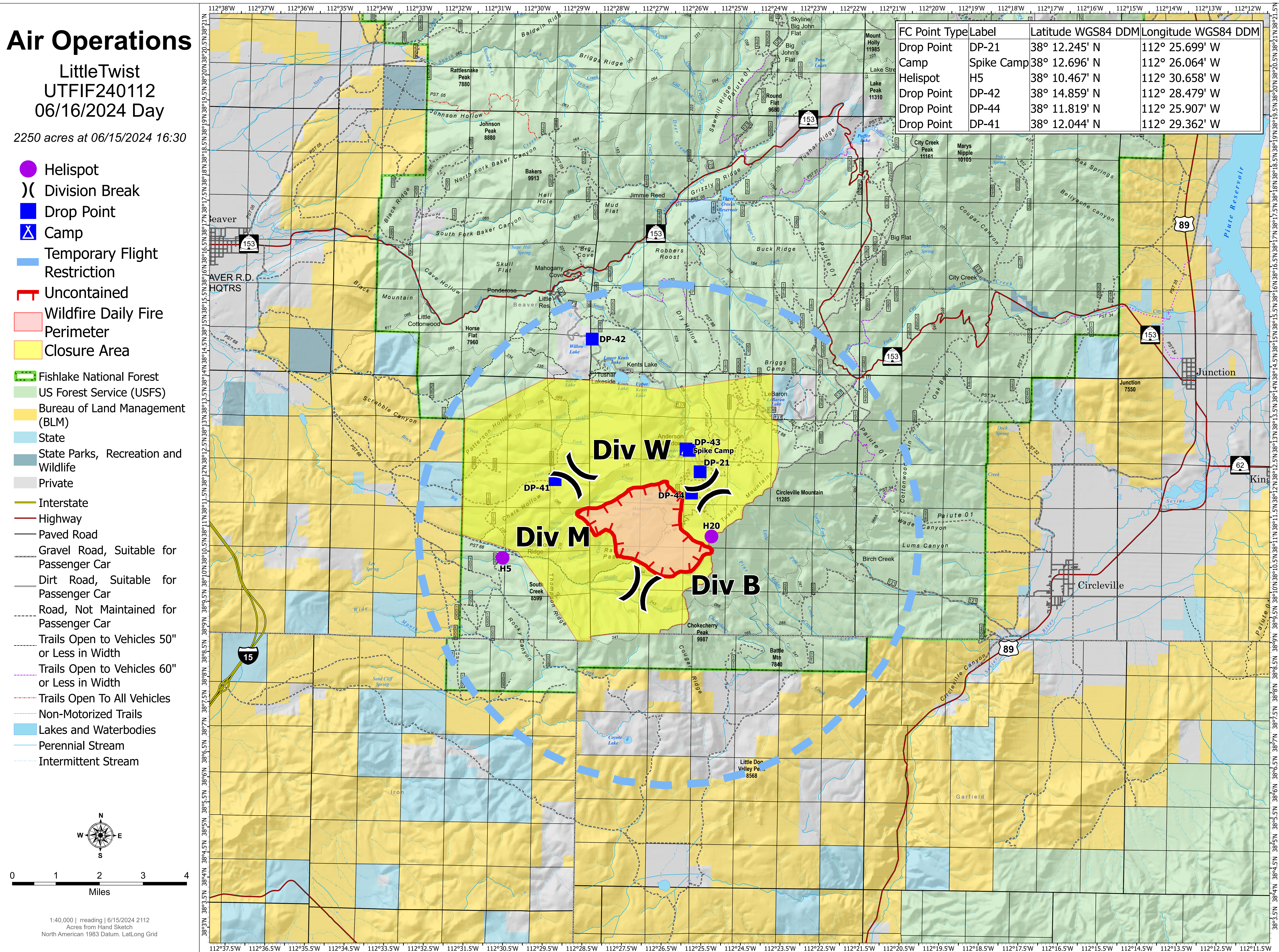
Air Operations

Little Twist
 UTFIF240112
 06/16/2024 Day

2250 acres at 06/15/2024 16:30

- Helispot
-) Division Break
- Drop Point
- ▲ Camp
- ▬ Temporary Flight Restriction
- ▬ Uncontained
- ▬ Wildfire Daily Fire Perimeter
- Closure Area
- ▬ Fishlake National Forest
- US Forest Service (USFS)
- Bureau of Land Management (BLM)
- State
- State Parks, Recreation and Wildlife
- Private
- ▬ Interstate
- ▬ Highway
- ▬ Paved Road
- ▬ Gravel Road, Suitable for Passenger Car
- ▬ Dirt Road, Suitable for Passenger Car
- ▬ Road, Not Maintained for Passenger Car
- ▬ Trails Open to Vehicles 50" or Less in Width
- ▬ Trails Open to Vehicles 60" or Less in Width
- ▬ Trails Open To All Vehicles
- ▬ Non-Motorized Trails
- Lakes and Waterbodies
- ▬ Perennial Stream
- ▬ Intermittent Stream

FC Point Type	Label	Latitude WGS84 DDM	Longitude WGS84 DDM
Drop Point	DP-21	38° 12.245' N	112° 25.699' W
Camp	Spike Camp	38° 12.696' N	112° 26.064' W
Helispot	H5	38° 10.467' N	112° 30.658' W
Drop Point	DP-42	38° 14.859' N	112° 28.479' W
Drop Point	DP-44	38° 11.819' N	112° 25.907' W
Drop Point	DP-41	38° 12.044' N	112° 29.362' W



1:40,000 | reading | 6/15/2024 2112
 Acres from Hand Sketch
 North American 1983 Datum, Lat/Long Grid