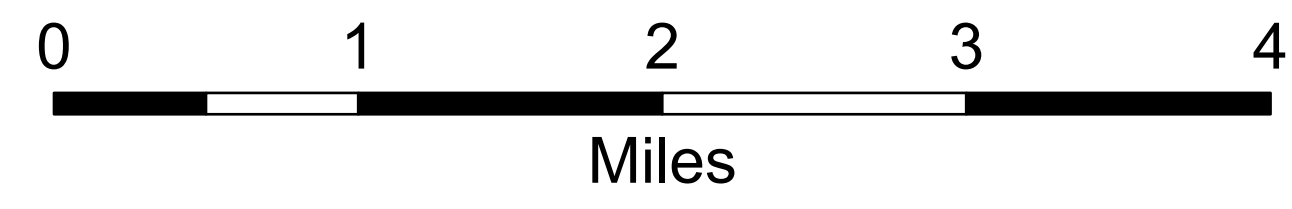
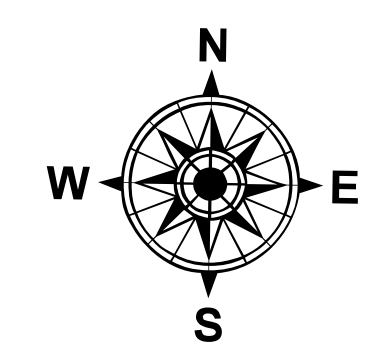
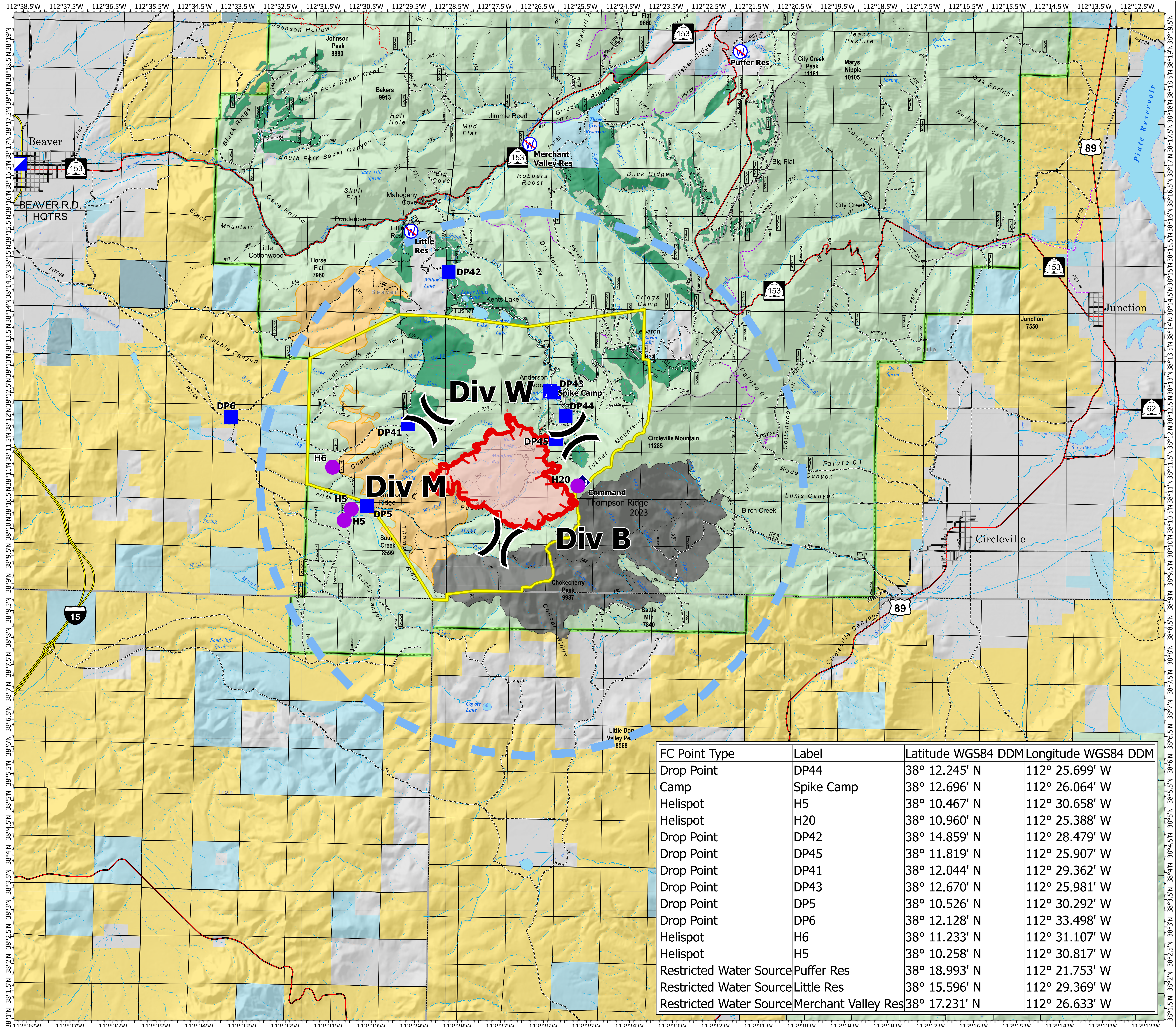


Air Operations

LittleTwist
 UTFIF240112
 06/17/2024 Day

2402 acres at 06/15/2024 22:03

- Helispot
- ⌋ Division Break
- ▣ Incident Command Post
- ▣ Drop Point
- ⚓ Camp
- ⬢ Repeater
- ⊗ Restricted Water Source
- Temporary Flight Restriction
- Uncontained
- Wildfire Daily Fire Perimeter
- Closure Area
- Prescribed Fire (4,774 acres)
- Other Treatments
- Thompson Ridge Fire 2023
- Fire History
- Fishlake National Forest
- US Forest Service (USFS)
- Bureau of Land Management (BLM)
- State
- State Parks, Recreation and Wildlife
- Private
- Interstate
- Highway
- Paved Road
- Gravel Road, Suitable for Passenger Car
- Dirt Road, Suitable for Passenger Car
- Road, Not Maintained for Passenger Car
- Trails Open to Vehicles 50" or Less in Width
- Trails Open to Vehicles 60" or Less in Width
- Trails Open To All Vehicles
- Non-Motorized Trails



1:40,000 | reading | 6/16/2024 1950
 Acres from IR Interpretation
 North American 1983 Datum, Lat/Long Grid

FC Point Type	Label	Latitude WGS84 DDM	Longitude WGS84 DDM
Drop Point	DP44	38° 12.245' N	112° 25.699' W
Camp	Spike Camp	38° 12.696' N	112° 26.064' W
Helispot	H5	38° 10.467' N	112° 30.658' W
Helispot	H20	38° 10.960' N	112° 25.388' W
Drop Point	DP42	38° 14.859' N	112° 28.479' W
Drop Point	DP45	38° 11.819' N	112° 25.907' W
Drop Point	DP41	38° 12.044' N	112° 29.362' W
Drop Point	DP43	38° 12.670' N	112° 25.981' W
Drop Point	DP5	38° 10.526' N	112° 30.292' W
Drop Point	DP6	38° 12.128' N	112° 33.498' W
Helispot	H6	38° 11.233' N	112° 31.107' W
Helispot	H5	38° 10.258' N	112° 30.817' W
Restricted Water Source	Puffer Res	38° 18.993' N	112° 21.753' W
Restricted Water Source	Little Res	38° 15.596' N	112° 29.369' W
Restricted Water Source	Merchant Valley Res	38° 17.231' N	112° 26.633' W