

Operations

Topo IR

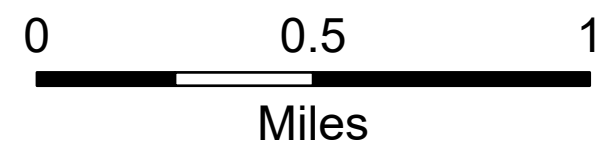
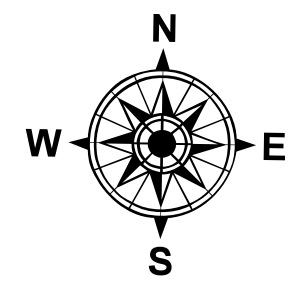
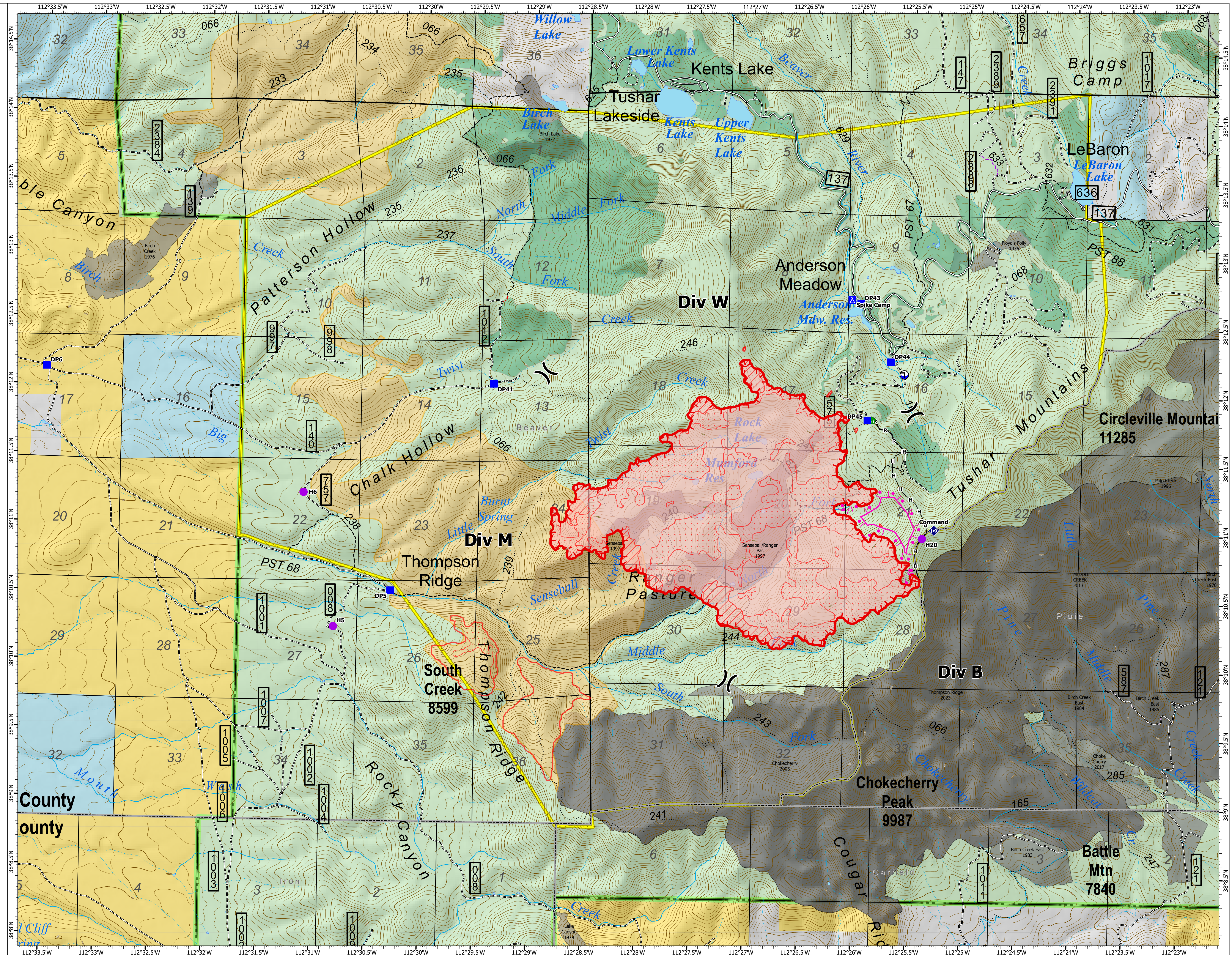
Little Twist

UTFIF240112

06/17/2024 Afternoon

2402 acres at 06/15/2024 22:03

- Helispot
-) Division Break
- Drop Point
- ⚡ Camp
- ⚡ Road Repair
- ⚡ Repeater
- Ⓜ Draft Site
- +— Completed Hand Line
- R— Completed Road as Line
- ⚡ Planned Burnout
- ⚡ Uncontained
- IR Heat Perimeter
- IR Intense Heat
- IR Scattered Heat
- Wildfire Daily Fire Perimeter
- Closure Area
- Prescribed Fire (4,774 acres)
- Other Treatments
- Thompson Ridge Fire 2023
- Fire History
- County Lines
- Fishlake National Forest
- US Forest Service (USFS)
- Bureau of Land Management (BLM)
- State
- Private
- ~ Gravel Road, Suitable for Passenger Car
- ~ Dirt Road, Suitable for Passenger Car
- ~ Road, Not Maintained for Passenger Car
- ~ Non-Motorized Trails
- ~ Trails Open to Vehicles 50" or Less in Width
- ~ Trails Open to Vehicles 60" or Less in Width
- ~ Trails Open To All Vehicles



1:22,000 | reading | 6/17/2024 1447
 Acres from IR Interpretation
 North American 1983 Datum. Lat,Long Grid