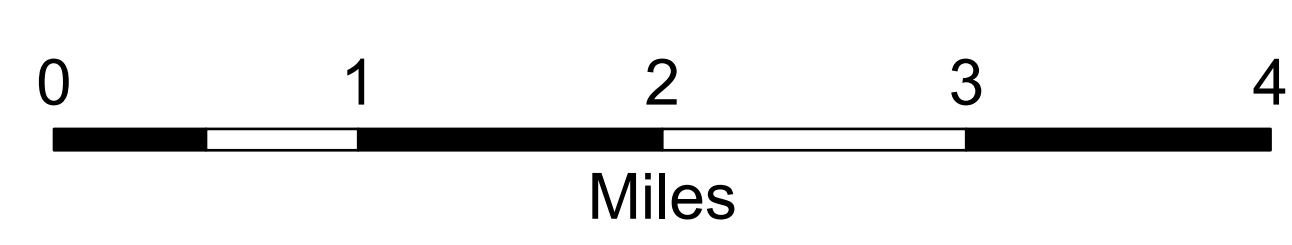
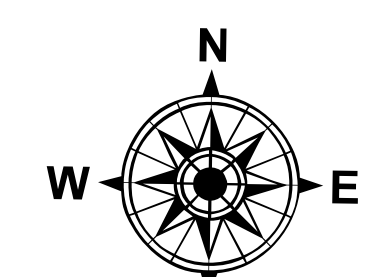


# Air Operations

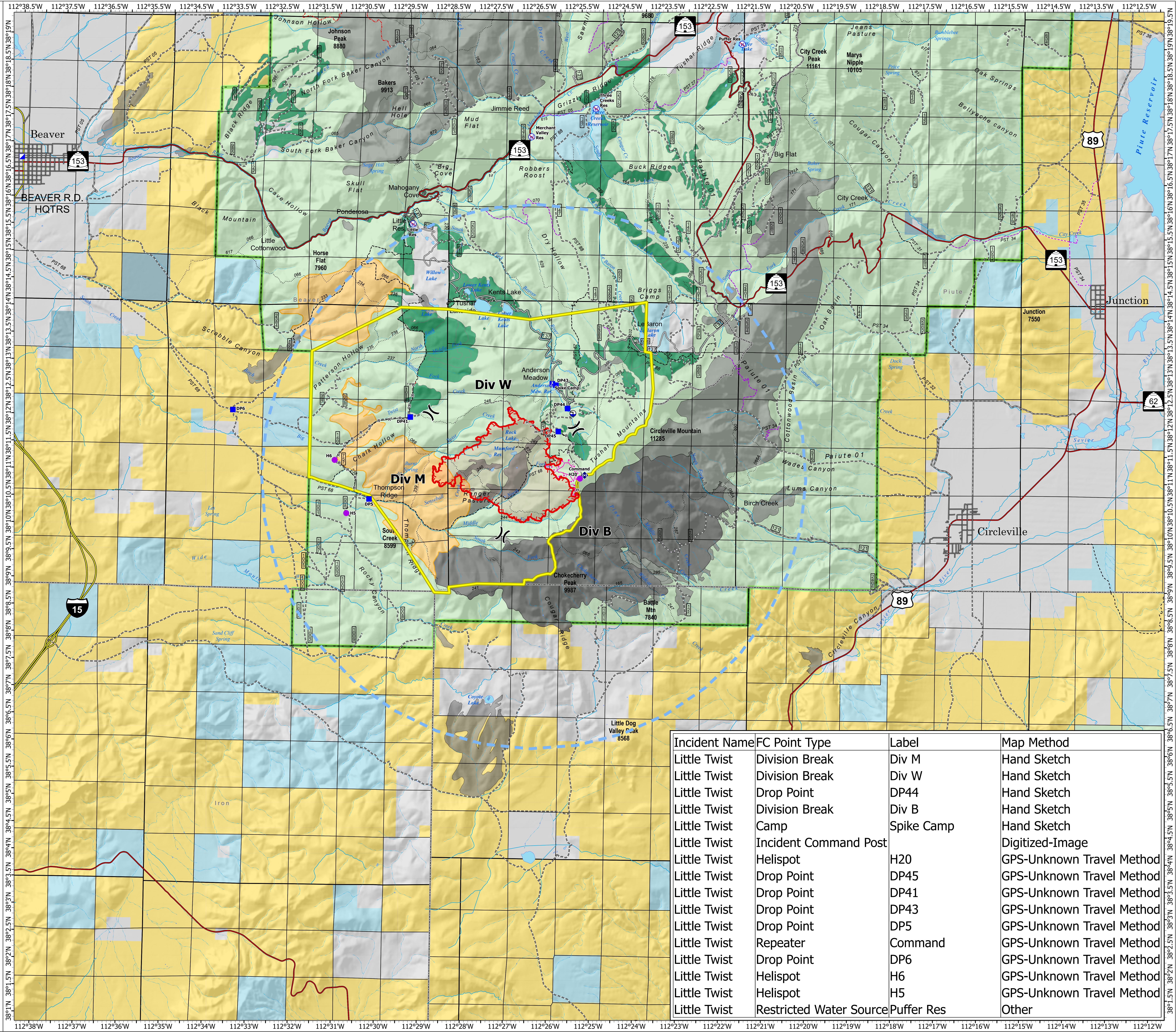
Little Twist  
UTFIF240112  
06/18/2024 Day

2402 acres at 06/15/2024 22:03

- Helispot
- ) Division Break
- Incident Command Post
- Drop Point
- Camp
- Road Repair
- ◆ Repeater
- Draft Site
- Restricted Water Source
- Completed Hand Line
- Completed Road as Line
- Planned Burnout
- Potential Line
- Temporary Flight Restriction
- Uncontained
- Wildfire Daily Fire Perimeter
- Closure Area
- Prescribed Fire (4,774 acres)
- Other Treatments
- Thompson Ridge Fire 2023
- Fire History
- Fishlake National Forest
- US Forest Service (USFS)
- Bureau of Land Management (BLM)
- State
- State Parks, Recreation and Wildlife
- Private
- Interstate
- Highway
- Paved Road
- Gravel Road, Suitable for Passenger Car
- Dirt Road, Suitable for Passenger Car
- Road, Not Maintained for Passenger Car
- Trails Open to Vehicles 50" or Less in Width
- Trails Open to Vehicles 60" or Less in Width
- Trails Open To All Vehicles
- Non-Motorized Trails



1:40,000 | rreading | 6/17/2024 2107  
Acres from IR Interpretation  
North American 1983 Datum, Lat/Long Grid



Incident Name	FC Point Type	Label	Map Method
Little Twist	Division Break	Div M	Hand Sketch
Little Twist	Division Break	Div W	Hand Sketch
Little Twist	Drop Point	DP44	Hand Sketch
Little Twist	Division Break	Div B	Hand Sketch
Little Twist	Camp	Spike Camp	Hand Sketch
Little Twist	Incident Command Post		Digitized-Image
Little Twist	Helispot	H20	GPS-Unknown Travel Method
Little Twist	Drop Point	DP45	GPS-Unknown Travel Method
Little Twist	Drop Point	DP41	GPS-Unknown Travel Method
Little Twist	Drop Point	DP43	GPS-Unknown Travel Method
Little Twist	Drop Point	DP5	GPS-Unknown Travel Method
Little Twist	Repeater	Command	GPS-Unknown Travel Method
Little Twist	Drop Point	DP6	GPS-Unknown Travel Method
Little Twist	Helispot	H6	GPS-Unknown Travel Method
Little Twist	Helispot	H5	GPS-Unknown Travel Method
Little Twist	Restricted Water Source	Puffer Res	Other