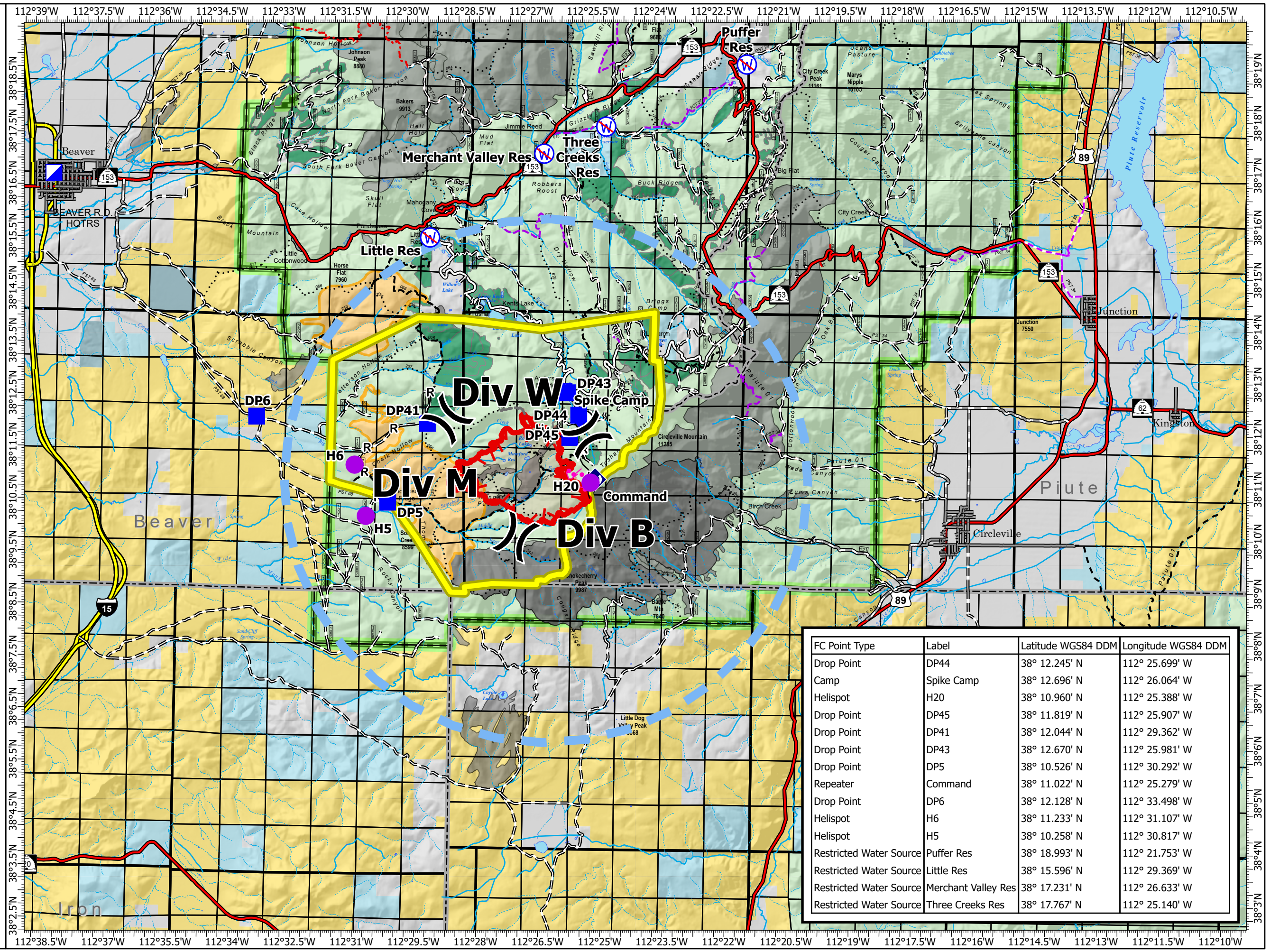


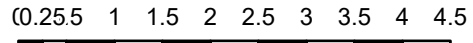
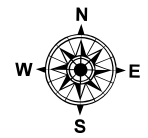
Air Operations (Pilots Map)

Little Twist
UTFIF240112
06/18/2024 Day
2402 acres at 06/15/2024 22:03

- Helispot
-) Division Break
- ▣ Incident Command Post
- ▣ Drop Point
- ⊗ Camp
- ⬆ Road Repair
- ⬆ Repeater
- ⊕ Draft Site
- ⊗ Restricted Water Source
- H— Completed Hand Line
- R— Completed Road as Line
- ┌ Planned Burnout
- - - Potential Line
- ▬ Temporary Flight Restriction
- ▬ Uncontained
- ▬ Wildfire Daily Fire Perimeter
- ▬ Closure Area
- ▬ Prescribed Fire (4,774 acres)
- ▬ Other Treatments
- ▬ Thompson Ridge Fire 2023
- ▬ Fire History



FC Point Type	Label	Latitude WGS84 DDM	Longitude WGS84 DDM
Drop Point	DP44	38° 12.245' N	112° 25.699' W
Camp	Spike Camp	38° 12.696' N	112° 26.064' W
Helispot	H20	38° 10.960' N	112° 25.388' W
Drop Point	DP45	38° 11.819' N	112° 25.907' W
Drop Point	DP41	38° 12.044' N	112° 29.362' W
Drop Point	DP43	38° 12.670' N	112° 25.981' W
Drop Point	DP5	38° 10.526' N	112° 30.292' W
Repeater	Command	38° 11.022' N	112° 25.279' W
Drop Point	DP6	38° 12.128' N	112° 33.498' W
Helispot	H6	38° 11.233' N	112° 31.107' W
Helispot	H5	38° 10.258' N	112° 30.817' W
Restricted Water Source	Puffer Res	38° 18.993' N	112° 21.753' W
Restricted Water Source	Little Res	38° 15.596' N	112° 29.369' W
Restricted Water Source	Merchant Valley Res	38° 17.231' N	112° 26.633' W
Restricted Water Source	Three Creeks Res	38° 17.767' N	112° 25.140' W



1:126,720 | reading | 6/17/2024 2109
Acres from IR Interpretation
North American 1983 Datum, Lat/Long Grid