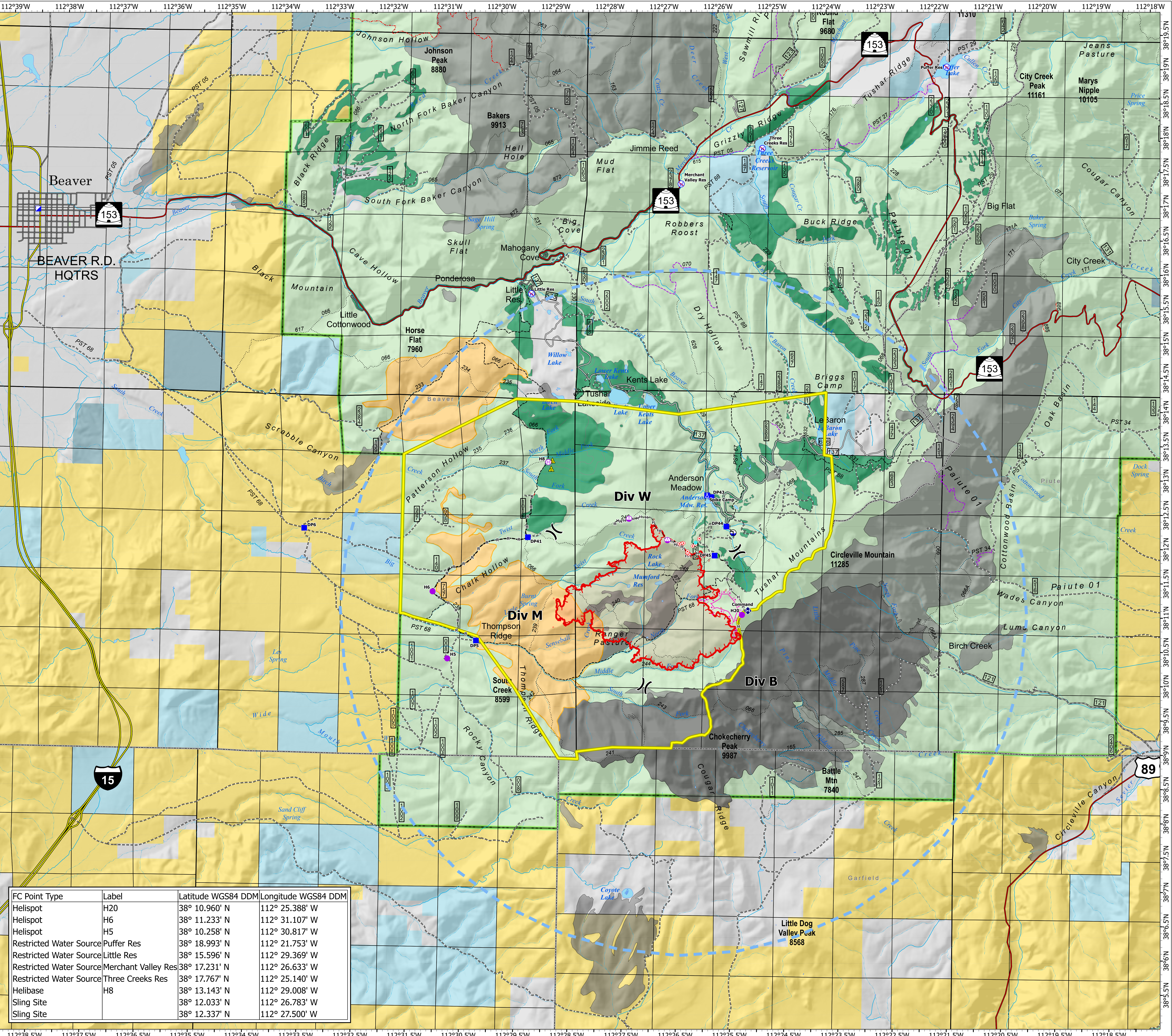


Air Operations

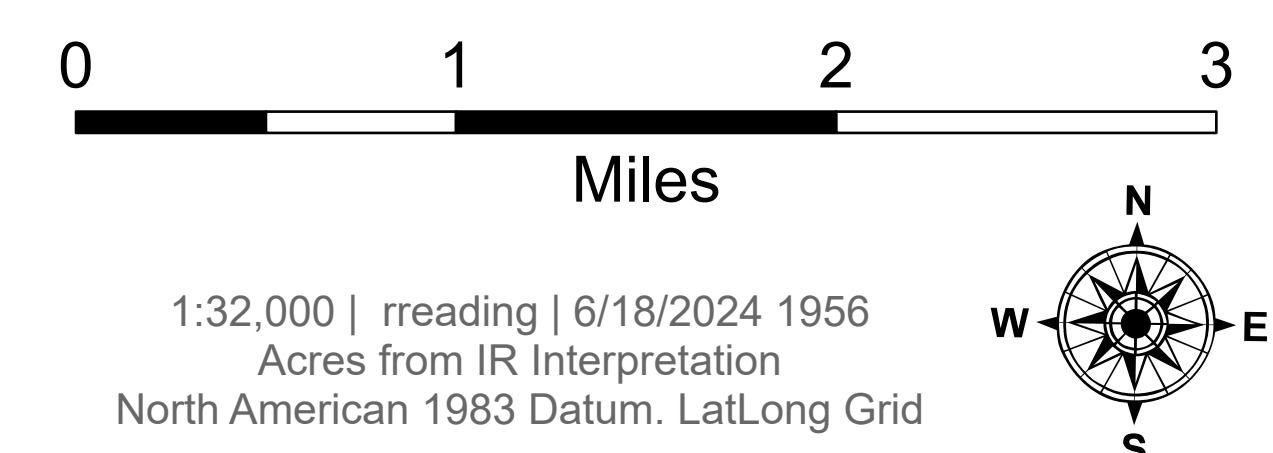
Little Twist
 UTFIF240112
 06/19/2024 Day

2431 acres at 06/17/2024 23:00

- Helispot
- ⊕ Helibase
- ⊗ Sling Site
-) Division Break
- ▣ Incident Command Post
- Drop Point
- ⊠ Camp
- Hot Spot - Spot Fire
- 🏠 Road Repair
- ⬇ Repeater
- ▲ Safety Zone
- ⊕ Draft Site
- ⊗ Restricted Water Source
- Completed Hand Line
- Completed Road as Line
- Planned Burnout
- - - Potential Line
- Temporary Flight Restriction
- Uncontained
- Wildfire Daily Fire Perimeter
- Closure Area
- Prescribed Fire (4,774 acres)
- Other Treatments
- Thompson Ridge Fire 2023
- Fire History
- Fishlake National Forest
- US Forest Service (USFS)
- Bureau of Land Management (BLM)
- State
- State Parks, Recreation and Wildlife
- Private
- Interstate
- Highway
- Paved Road
- Gravel Road, Suitable for Passenger Car
- Dirt Road, Suitable for Passenger Car
- Road, Not Maintained for Passenger Car
- Trails Open to Vehicles 50" or Less in Width
- Trails Open to Vehicles 60" or Less in Width
- Trails Open To All Vehicles
- Non-Motorized Trails



FC Point Type	Label	Latitude WGS84 DDM	Longitude WGS84 DDM
Helispot	H20	38° 10.960' N	112° 25.388' W
Helispot	H6	38° 11.233' N	112° 31.107' W
Helispot	H5	38° 10.258' N	112° 30.817' W
Restricted Water Source	Puffer Res	38° 18.993' N	112° 21.753' W
Restricted Water Source	Little Res	38° 15.596' N	112° 29.369' W
Restricted Water Source	Merchant Valley Res	38° 17.231' N	112° 26.633' W
Restricted Water Source	Three Creeks Res	38° 17.767' N	112° 25.140' W
Helibase	H8	38° 13.143' N	112° 29.008' W
Sling Site		38° 12.033' N	112° 26.783' W
Sling Site		38° 12.337' N	112° 27.500' W



1:32,000 | reading | 6/18/2024 1956
 Acres from IR Interpretation
 North American 1983 Datum, Lat/Long Grid