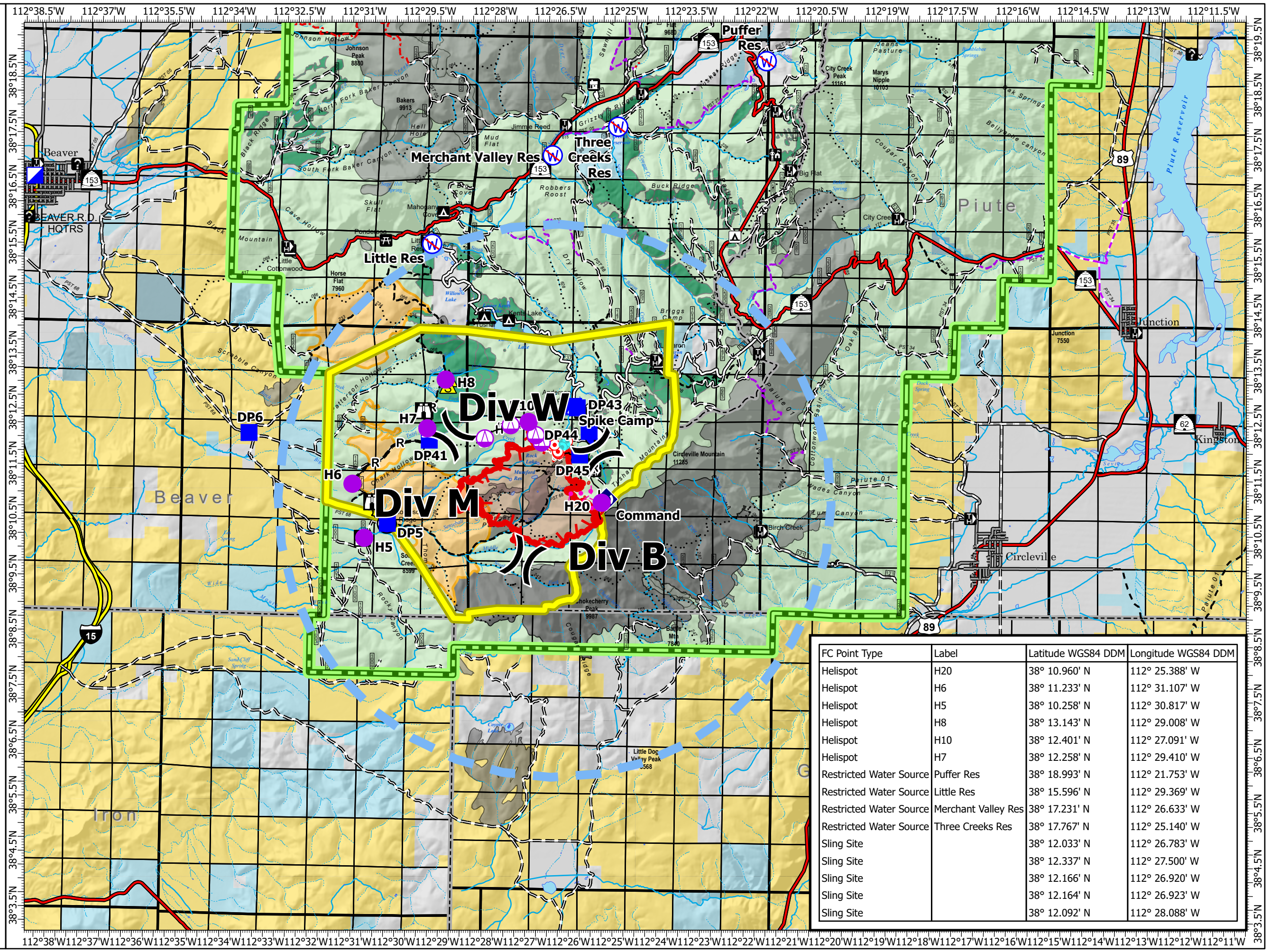


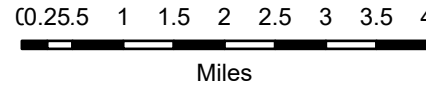
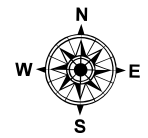
# Air Operations (Pilots Map)

Little Twist  
UTFIF240112  
06/20/2024 Day  
2431 acres at 06/17/2024 23:00

- Helispot
- ⬢ Sling Site
- ) Division Break
- ▣ Incident Command Post
- Drop Point
- ⌘ Camp
- ⌘ Lookout
- Hot Spot - Spot Fire
- ⬢ Road Repair
- ⬢ Repeater
- ⚠ Safety Zone
- ⬢ Draft Site
- ⊙ Restricted Water Source
- H — Completed Hand Line
- R — Completed Road as Line
- Planned Burnout
- Temporary Flight Restriction
- ▭ Uncontained
- ▭ Wildfire Daily Fire Perimeter
- ▭ Closure Area
- ▭ Prescribed Fire (4,774 acres)
- ▭ Other Treatments
- ▭ Thompson Ridge Fire 2023
- ▭ Fire History



FC Point Type	Label	Latitude WGS84 DDM	Longitude WGS84 DDM
Helispot	H20	38° 10.960' N	112° 25.388' W
Helispot	H6	38° 11.233' N	112° 31.107' W
Helispot	H5	38° 10.258' N	112° 30.817' W
Helispot	H8	38° 13.143' N	112° 29.008' W
Helispot	H10	38° 12.401' N	112° 27.091' W
Helispot	H7	38° 12.258' N	112° 29.410' W
Restricted Water Source	Puffer Res	38° 18.993' N	112° 21.753' W
Restricted Water Source	Little Res	38° 15.596' N	112° 29.369' W
Restricted Water Source	Merchant Valley Res	38° 17.231' N	112° 26.633' W
Restricted Water Source	Three Creeks Res	38° 17.767' N	112° 25.140' W
Sling Site		38° 12.033' N	112° 26.783' W
Sling Site		38° 12.337' N	112° 27.500' W
Sling Site		38° 12.166' N	112° 26.920' W
Sling Site		38° 12.164' N	112° 26.923' W
Sling Site		38° 12.092' N	112° 28.088' W



1:120,000 | reading | 6/19/2024 19:25  
Acres from IR Interpretation  
North American 1983 Datum, Lat/Long Grid