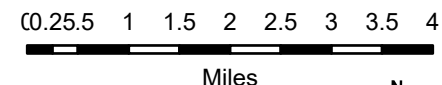


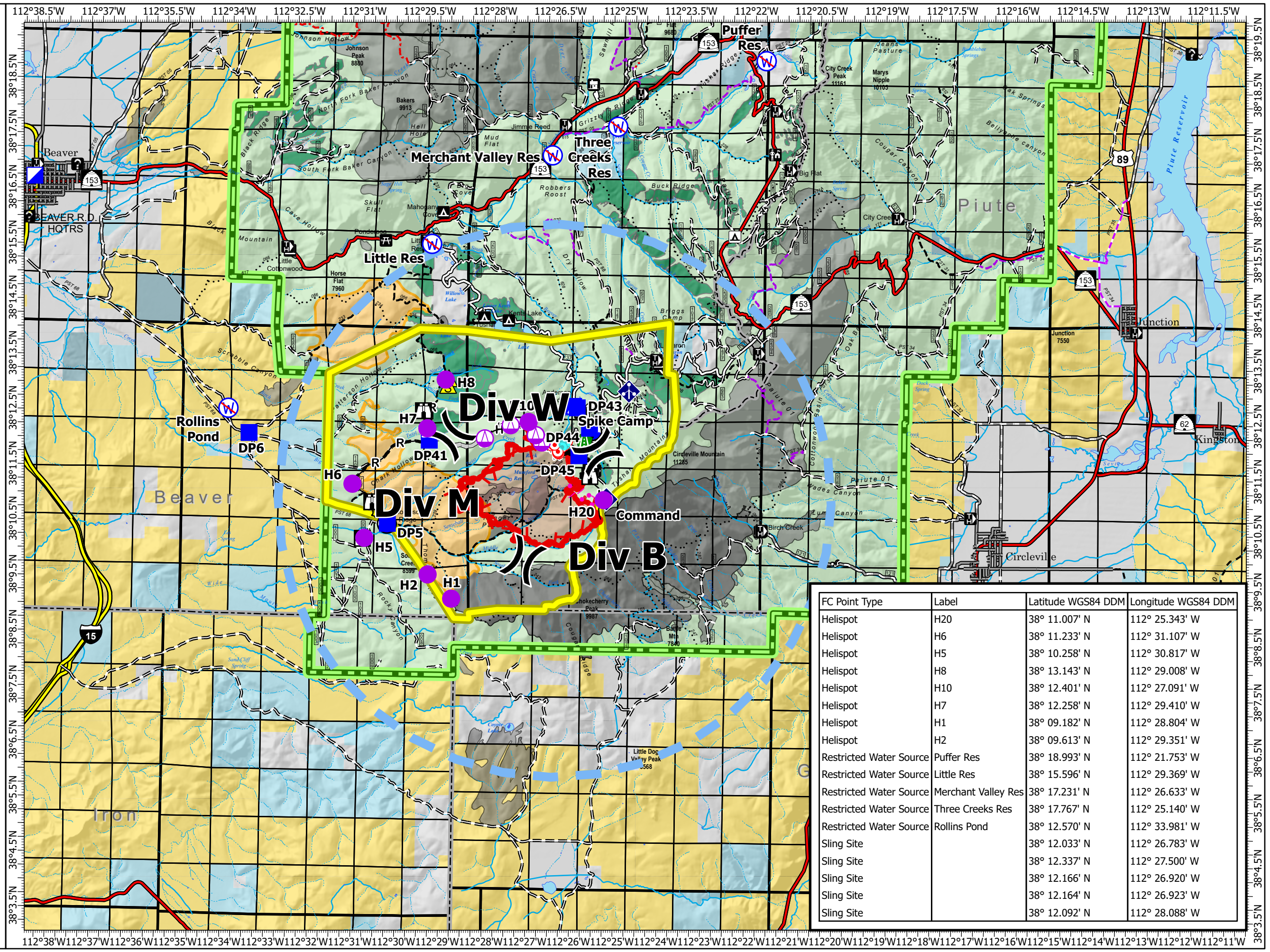
Air Operations (Pilots Map)

Little Twist
UTFIF240112
06/22/2024 Day
2,444 acres at 06/20/2024 1749

- Helispot
- Sling Site
-) Division Break
- ▣ Incident Command Post
- Drop Point
- ⊗ Camp
- ⏏ Lookout
- Hot Spot - Spot Fire
- ▲ Road Repair
- ⬇ Mobile Weather Unit
- ⬇ Repeater
- ▲ Safety Zone
- ⊕ Draft Site
- ⊕ Restricted Water Source
- H — Completed Hand Line
- R — Completed Road as Line
- Planned Burnout
- Access Route
- - - Potential Line
- Temporary Flight Restriction
- Contained
- Uncontained
- Wildfire Daily Fire Perimeter
- Closure Area
- Prescribed Fire (4,774 acres)
- Other Treatments
- Thompson Ridge Fire 2023
- Fire History



1:120,000 | reading | 6/21/2024 1925
Acres from IR Interpretation and Hand Sketch
North American 1983 Datum. LatLong Grid



FC Point Type	Label	Latitude WGS84 DDM	Longitude WGS84 DDM
Helispot	H20	38° 11.007' N	112° 25.343' W
Helispot	H6	38° 11.233' N	112° 31.107' W
Helispot	H5	38° 10.258' N	112° 30.817' W
Helispot	H8	38° 13.143' N	112° 29.008' W
Helispot	H10	38° 12.401' N	112° 27.091' W
Helispot	H7	38° 12.258' N	112° 29.410' W
Helispot	H1	38° 09.182' N	112° 28.804' W
Helispot	H2	38° 09.613' N	112° 29.351' W
Restricted Water Source	Puffer Res	38° 18.993' N	112° 21.753' W
Restricted Water Source	Little Res	38° 15.596' N	112° 29.369' W
Restricted Water Source	Merchant Valley Res	38° 17.231' N	112° 26.633' W
Restricted Water Source	Three Creeks Res	38° 17.767' N	112° 25.140' W
Restricted Water Source	Rollins Pond	38° 12.570' N	112° 33.981' W
Sling Site		38° 12.033' N	112° 26.783' W
Sling Site		38° 12.337' N	112° 27.500' W
Sling Site		38° 12.166' N	112° 26.920' W
Sling Site		38° 12.164' N	112° 26.923' W
Sling Site		38° 12.092' N	112° 28.088' W