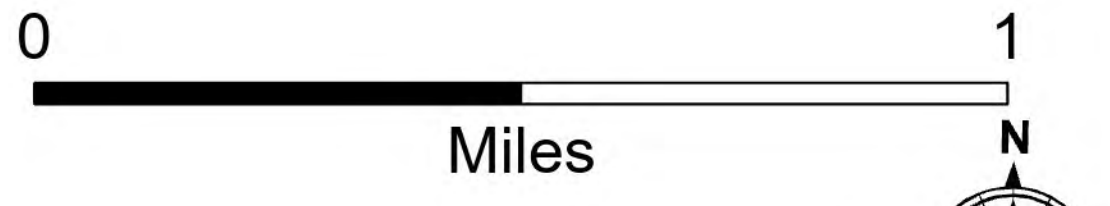
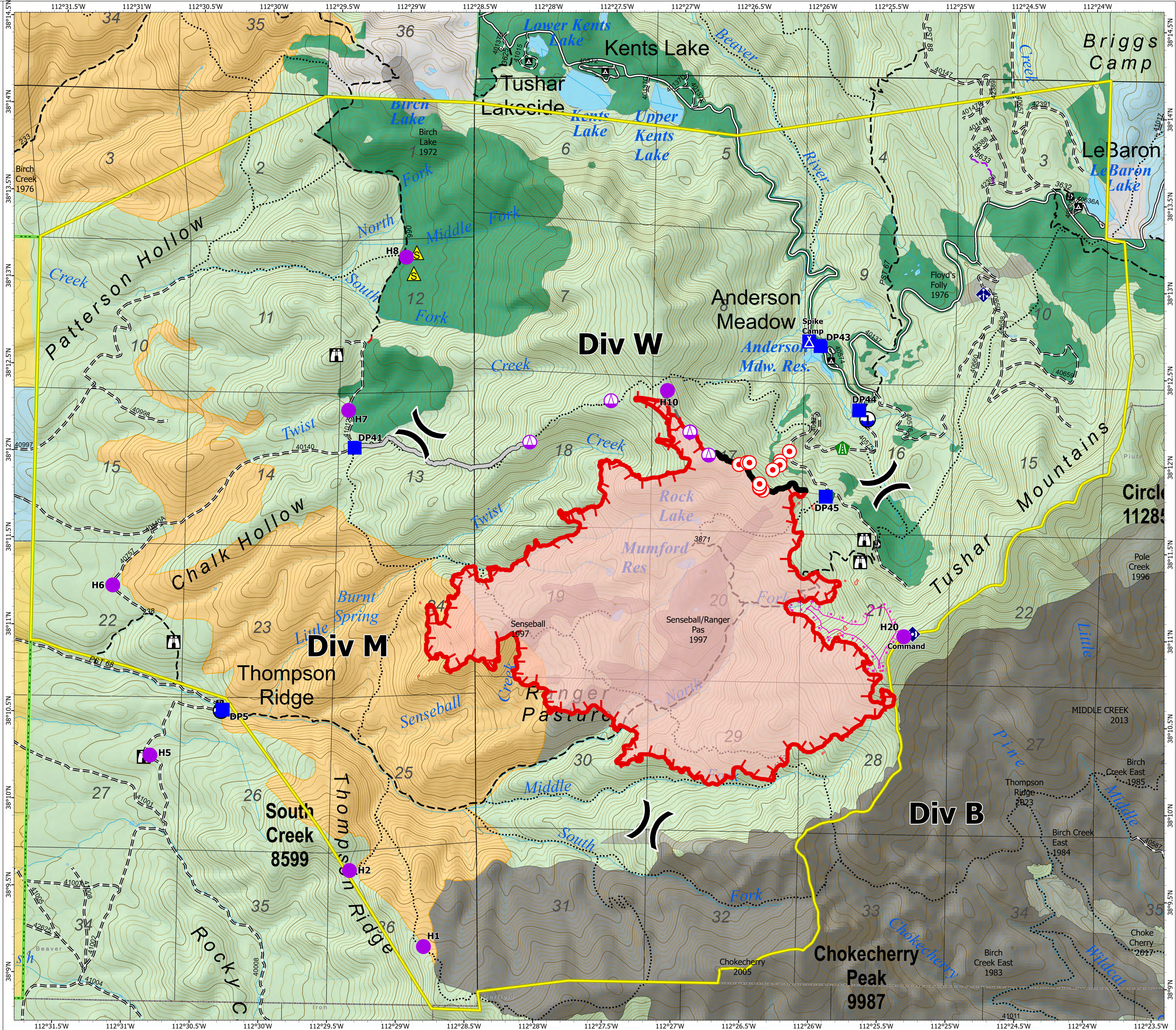


# Briefing Map

Little Twist  
UTFIF240112  
06/22/2024 Night

2,444 acres at 06/20/2024 1749

- Helispot
- ⚙ Sling Site
- ) Division Break
- ⛑ Camp
- Drop Point
- 🏠 Lookout
- 🔥 Hot Spot - Spot Fire
- 🛠 Road Repair
- 📶 Mobile Weather Unit
- 📶 Repeater
- ⚠ Safety Zone
- 📶 Draft Site
- Planned Burnout
- Access Route
- - - Potential Line
- ▬ Contained
- ▬ Uncontained
- 🔴 Wildfire Daily Fire Perimeter
- 🟡 Closure Area
- 🟠 Prescribed Fire (4,774 acres)
- 🟢 Other Treatments
- 🟡 Thompson Ridge Fire 2023
- 🟠 Fire History
- 🌲 Fishlake National Forest
- 🌲 US Forest Service (USFS)
- 🟡 Bureau of Land Management (BLM)
- 🟢 State
- 🟠 Private
- 🛣 Paved Road
- 🛣 Gravel Road, Suitable for Passenger Car
- 🛣 Dirt Road, Suitable for Passenger Car
- 🛣 Road, Not Maintained for Passenger Car
- 🛣 Trails Open to Vehicles 50" or Less in Width
- 🛣 Trails Open to Vehicles 60" or Less in Width
- 🛣 Trails Open To All Vehicles
- 🛣 Non-Motorized Trails



1:12,500 | reading | 6/22/2024 1419  
Acres from IR Interpretation and Hand Sketch  
North American 1983 Datum, Lat/Long Grid