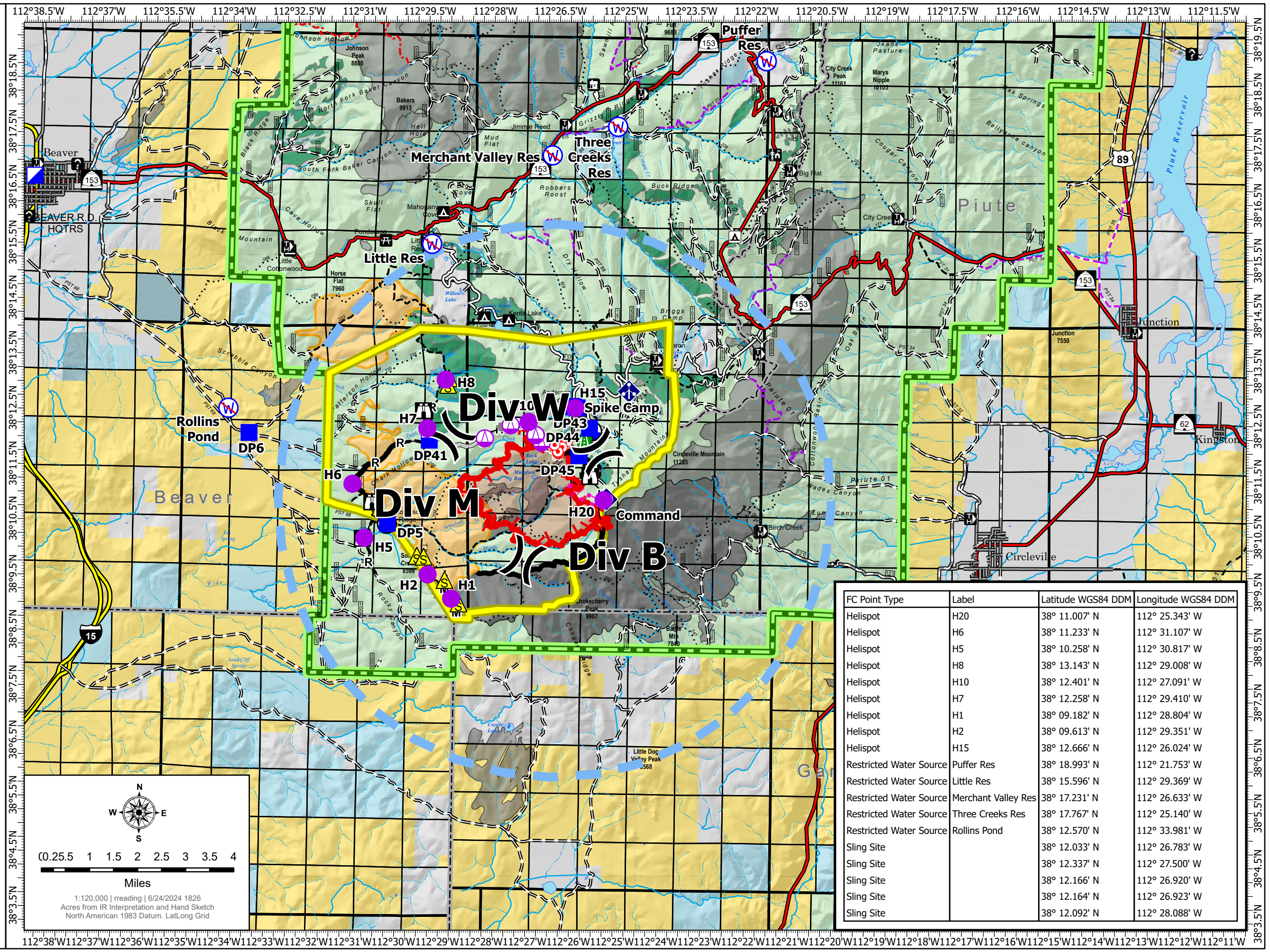


Air Operations (Pilots Map) Little Twist UTFIF240112 06/25/2024 Day

2529 acres at 06/22/2024 2344
2398 acres outside the Rx Fire

- Helispot
- Sling Site
-) Division Break
- ▣ Incident Command Post
- Drop Point
- ⊗ Camp
- ⬜ Lookout
- Hot Spot - Spot Fire
- Other
- ▲ Road Repair
- ⬆ Mobile Weather Unit
- ⬇ Repeater
- ▲ Safety Zone
- ⊕ Draft Site
- ⊗ Restricted Water Source
- Completed Hand Line
- Completed Mixed Construction Line
- Completed Road as Line
- Planned Burnout
- Access Route
- - - Potential Line
- Temporary Flight Restriction
- Contained
- Uncontained
- ▭ Wildfire Daily Fire Perimeter
- ▭ Closure Area
- ▭ Prescribed Fire (4,774 acres)
- ▭ Other Treatments
- ▭ Thompson Ridge Fire 2023
- ▭ Fire History



| FC Point Type | Label | Latitude WGS84 DDM | Longitude WGS84 DDM |
|-------------------------|---------------------|--------------------|---------------------|
| Helispot | H20 | 38° 11.007' N | 112° 25.343' W |
| Helispot | H6 | 38° 11.233' N | 112° 31.107' W |
| Helispot | H5 | 38° 10.258' N | 112° 30.817' W |
| Helispot | H8 | 38° 13.143' N | 112° 29.008' W |
| Helispot | H10 | 38° 12.401' N | 112° 27.091' W |
| Helispot | H7 | 38° 12.258' N | 112° 29.410' W |
| Helispot | H1 | 38° 09.182' N | 112° 28.804' W |
| Helispot | H2 | 38° 09.613' N | 112° 29.351' W |
| Helispot | H15 | 38° 12.666' N | 112° 26.024' W |
| Restricted Water Source | Puffer Res | 38° 18.993' N | 112° 21.753' W |
| Restricted Water Source | Little Res | 38° 15.596' N | 112° 29.369' W |
| Restricted Water Source | Merchant Valley Res | 38° 17.231' N | 112° 26.633' W |
| Restricted Water Source | Three Creeks Res | 38° 17.767' N | 112° 25.140' W |
| Restricted Water Source | Rollins Pond | 38° 12.570' N | 112° 33.981' W |
| Sling Site | | 38° 12.033' N | 112° 26.783' W |
| Sling Site | | 38° 12.337' N | 112° 27.500' W |
| Sling Site | | 38° 12.166' N | 112° 26.920' W |
| Sling Site | | 38° 12.164' N | 112° 26.923' W |
| Sling Site | | 38° 12.092' N | 112° 28.088' W |