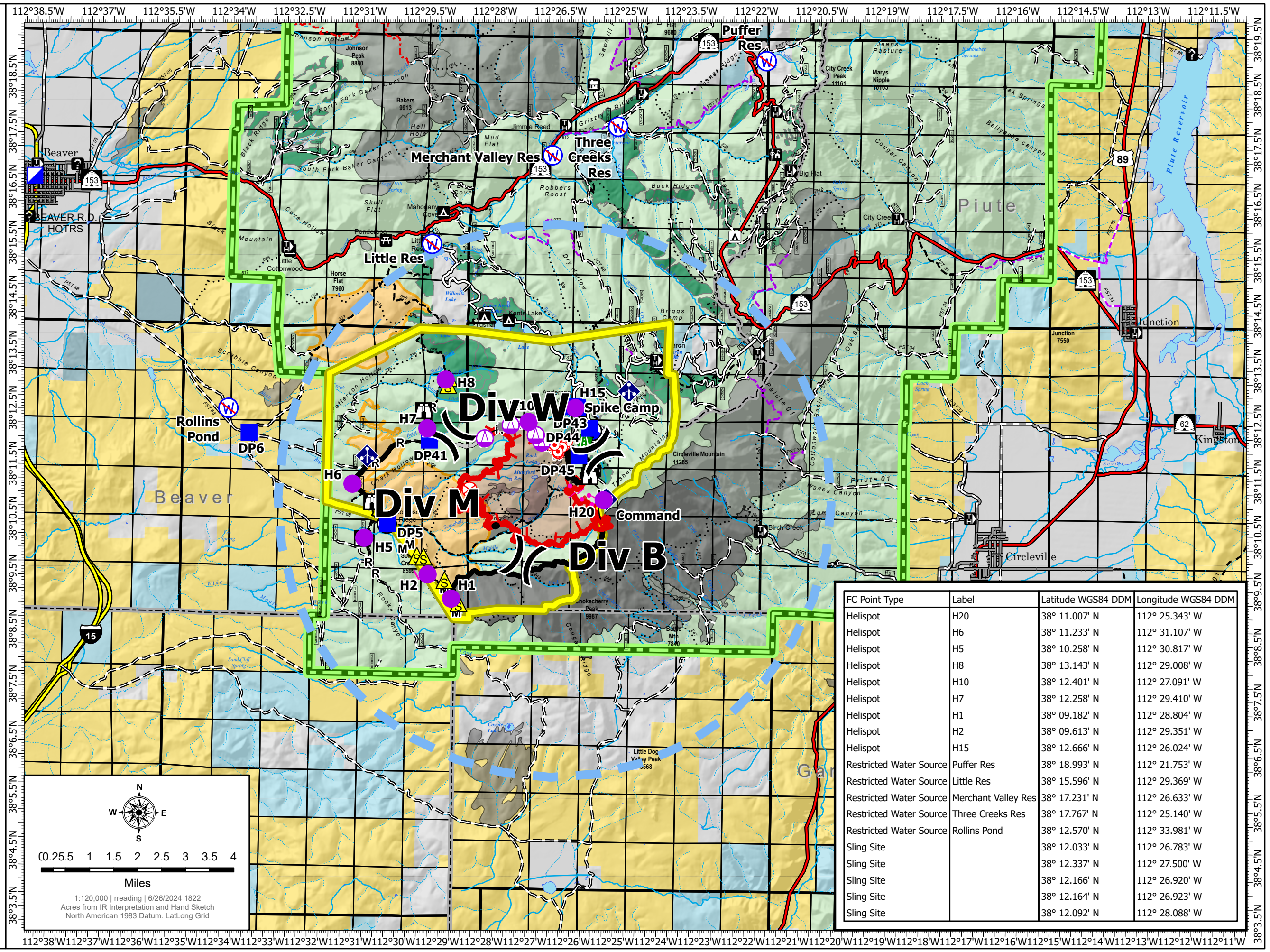


Air Operations (Pilots Map) Little Twist UTFIF240112 06/27/2024 Day

2654 acres at 06/25/2024 1900
2530 acres outside the Rx Fire

- Helispot
- ⬢ Sling Site
-) Division Break
- ▣ Incident Command Post
- Drop Point
- ⬢ Camp
- ⬢ Lookout
- Hot Spot - Spot Fire
- ⊗ Fire Origin
- Other
- ⬢ Road Repair
- ⬢ Mobile Weather Unit
- ⬢ Repeater
- ⬢ Safety Zone
- ⬢ Draft Site
- ⊗ Restricted Water Source
- H — Completed Hand Line
- M — Completed Mixed Construction Line
- R — Completed Road as Line
- ⬢ Planned Burnout
- Access Route
- - - Potential Line
- Temporary Flight Restriction
- Contained
- Uncontained
- ▭ Wildfire Daily Fire Perimeter
- ▭ Closure Area
- ▭ Prescribed Fire (4,774 acres)
- ▭ Other Treatments
- ▭ Thompson Ridge Fire 2023
- ▭ Fire History



FC Point Type	Label	Latitude WGS84 DDM	Longitude WGS84 DDM
Helispot	H20	38° 11.007' N	112° 25.343' W
Helispot	H6	38° 11.233' N	112° 31.107' W
Helispot	H5	38° 10.258' N	112° 30.817' W
Helispot	H8	38° 13.143' N	112° 29.008' W
Helispot	H10	38° 12.401' N	112° 27.091' W
Helispot	H7	38° 12.258' N	112° 29.410' W
Helispot	H1	38° 09.182' N	112° 28.804' W
Helispot	H2	38° 09.613' N	112° 29.351' W
Helispot	H15	38° 12.666' N	112° 26.024' W
Restricted Water Source	Puffer Res	38° 18.993' N	112° 21.753' W
Restricted Water Source	Little Res	38° 15.596' N	112° 29.369' W
Restricted Water Source	Merchant Valley Res	38° 17.231' N	112° 26.633' W
Restricted Water Source	Three Creeks Res	38° 17.767' N	112° 25.140' W
Restricted Water Source	Rollins Pond	38° 12.570' N	112° 33.981' W
Sling Site		38° 12.033' N	112° 26.783' W
Sling Site		38° 12.337' N	112° 27.500' W
Sling Site		38° 12.166' N	112° 26.920' W
Sling Site		38° 12.164' N	112° 26.923' W
Sling Site		38° 12.092' N	112° 28.088' W

