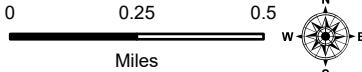


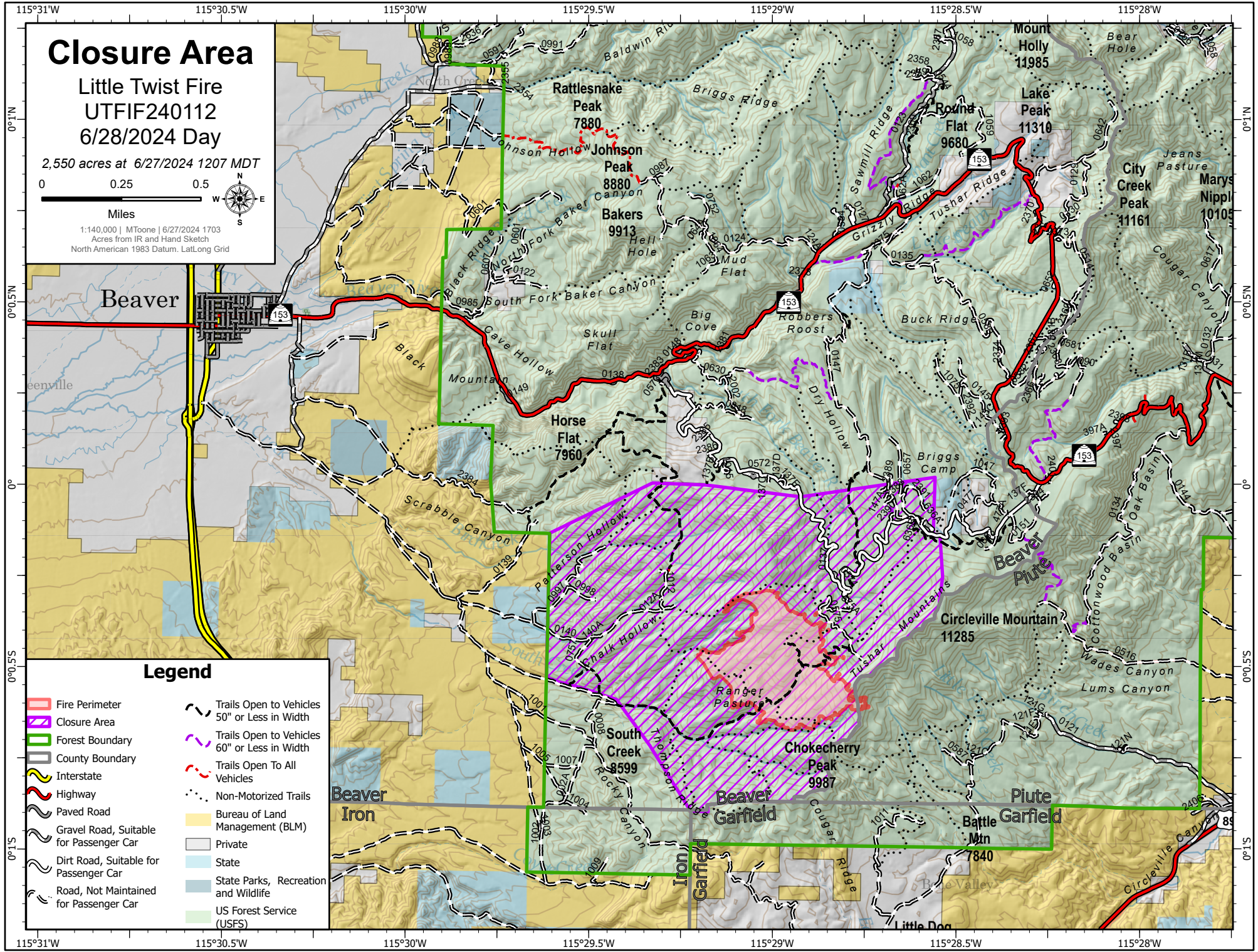
# Closure Area

Little Twist Fire  
UTFIF240112  
6/28/2024 Day

2,550 acres at 6/27/2024 1207 MDT



1:140,000 | MToone | 6/27/2024 1703  
Acres from IR and Hand Sketch  
North American 1983 Datum. Lat/Long Grid



## Legend

- Fire Perimeter
- Closure Area
- Forest Boundary
- County Boundary
- Interstate
- Highway
- Paved Road
- Gravel Road, Suitable for Passenger Car
- Dirt Road, Suitable for Passenger Car
- Road, Not Maintained for Passenger Car
- Trails Open to Vehicles 50" or Less in Width
- Trails Open to Vehicles 60" or Less in Width
- Trails Open To All Vehicles
- Non-Motorized Trails
- Bureau of Land Management (BLM)
- Private
- State
- State Parks, Recreation and Wildlife
- US Forest Service (USFS)