

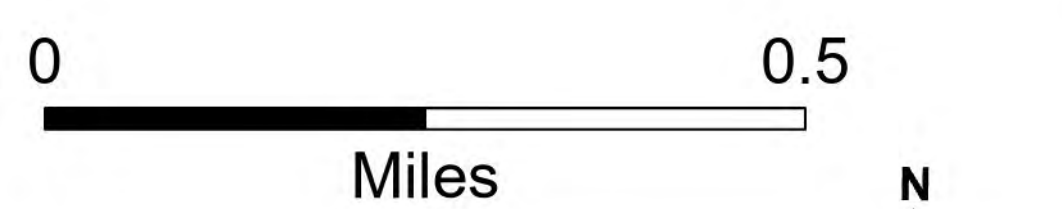
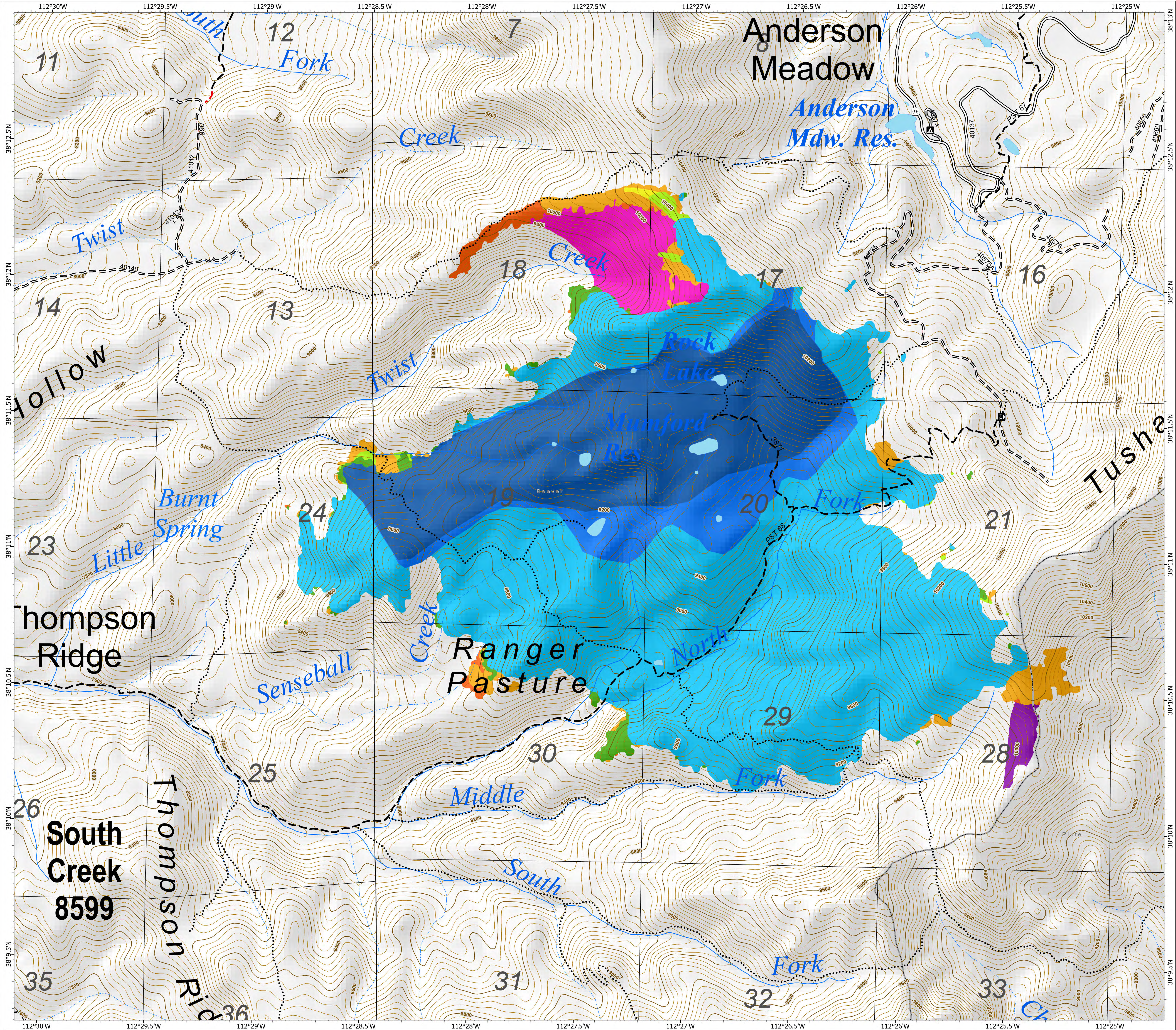
Progression Map

Little Twist
 UTFIF240112
 06/28/2024 Day
 2685 acres at 06/27/2024 1207

Fire Progression

- 06/27/2024 1207 2685 ac (+21 ac)
- 06/25/2024 1900 2654 ac (+113 ac)
- 06/24/2024 2128: 2551 ac (+22 ac)
- 06/22/2024 2344: 2,529 ac (+85 ac)
- 06/20/2024 1749: 2,444 ac (+2 ac)
- 06/19/2024 2157: 2,442 ac (+11 ac)
- 06/17/2024 2300: 2,431 ac (+29 ac)
- 06/15/2024 2203: 2,402 ac (+1,599 ac)
- 06/14/2024 2230: 804 ac (+175 ac)
- 06/13/2024 2230: 629 ac

- Paved Road
- Gravel Road, Suitable for Passenger Car
- Dirt Road, Suitable for Passenger Car
- Road, Not Maintained for Passenger Car
- Trails Open to Vehicles 50" or Less in Width
- Trails Open to Vehicles 60" or Less in Width
- Trails Open To All Vehicles
- Non-Motorized Trails
- Campground
- Day Use Area
- Trailhead



1:8,000 | reading | 6/27/2024 1846
 Acres from IR Interpretation and Hand Sketch
 North American 1983 Datum, Lat/Long Grid

