

# Progression Map

Little Twist Fire  
UTFIF240112  
7/01/2024 Day

2,685 acres at 6/27/2024 1207 MDT

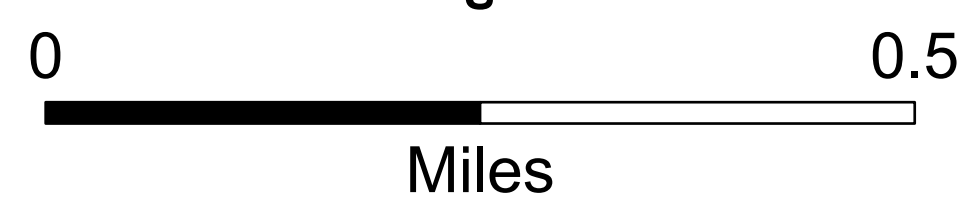
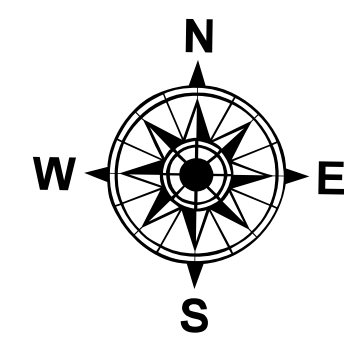
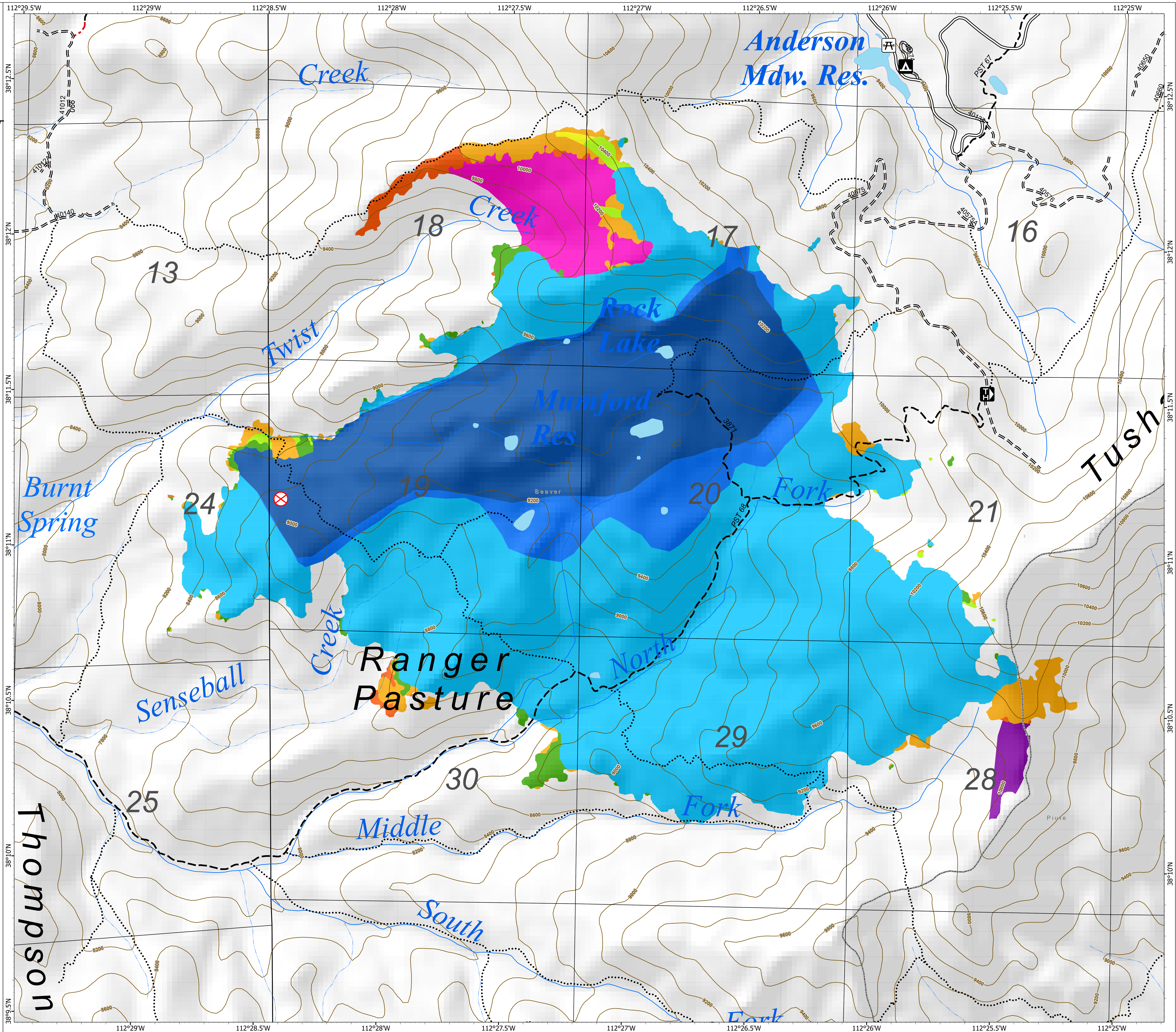
2,550 acres outside the Rx Fire

## Fire Progression

- 6/27/2024 1207: 2,685 (+21 ac)
- 06/25/2024 1900: 2,664 ac (+113 ac)
- 06/24/2024 2128: 2,551 ac (+22 ac)
- 06/22/2024 2344: 2,529 ac (+85 ac)
- 06/20/2024 1749: 2,444 ac (+2 ac)
- 06/19/2024 2157: 2,442 ac (+11 ac)
- 06/17/2024 2300: 2,431 ac (+29 ac)
- 06/15/2024 2203: 2,402 ac (+1,598 ac)
- 06/14/2024 2230: 804 ac (+175 ac)
- 06/13/2024 2230: 629 ac

- Fire Origin
- Paved Road
- Gravel Road, Suitable for Passenger Car
- Dirt Road, Suitable for Passenger Car
- Road, Not Maintained for Passenger Car
- Trails Open to Vehicles 50" or Less in Width
- Trails Open to Vehicles 60" or Less in Width
- Trails Open To All Vehicles
- Non-Motorized Trails

- Campground
- Day Use Area
- Trailhead



1:7,000 | reading | 6/30/2024 1744  
Acres from IR and Hand Sketch  
North American 1983 Datum. Lat/Long Grid