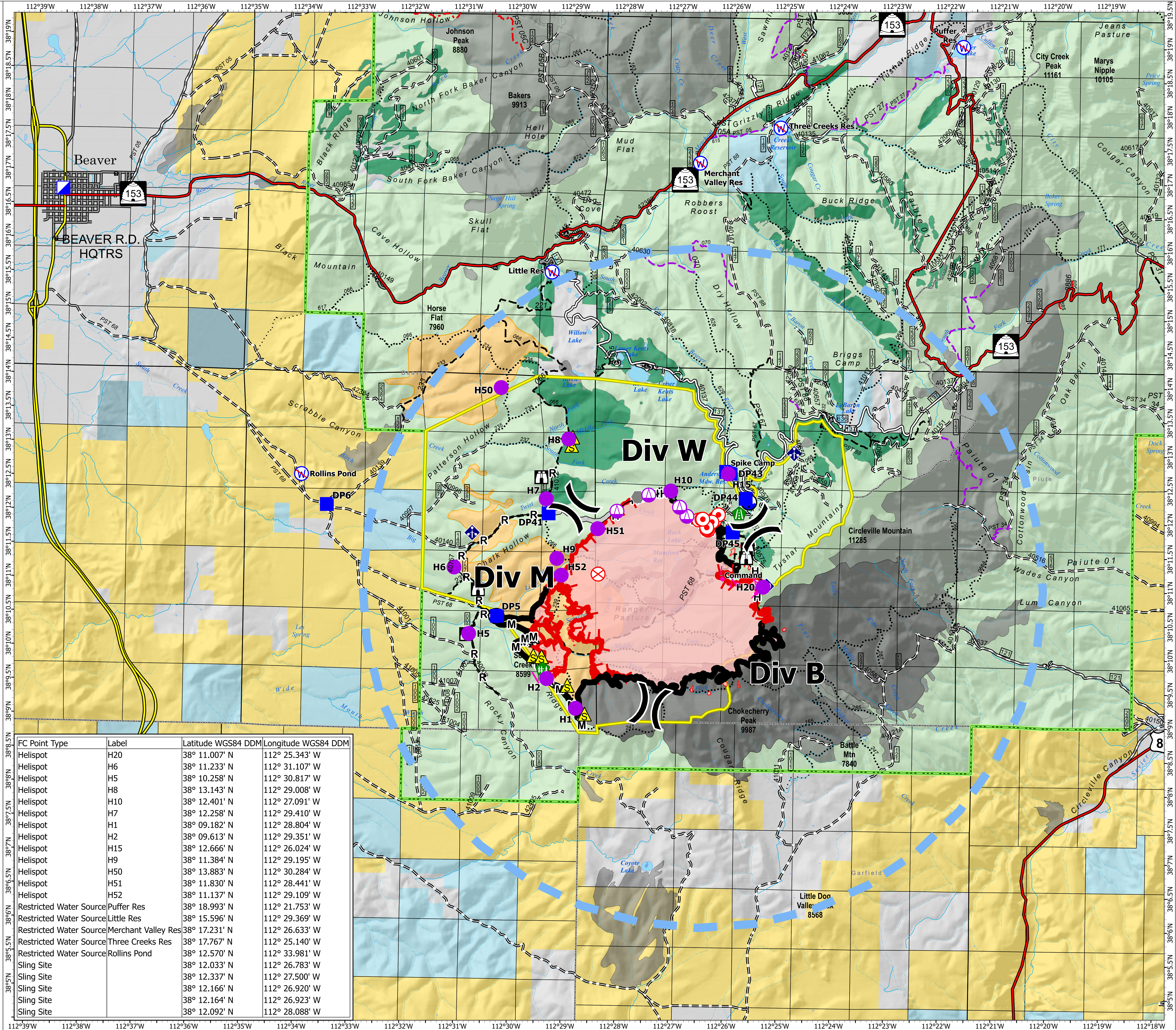


# Air Operations

Little Twist  
UTFIF240112  
07/10/2024 Day

5348 acres at 07/09/2024 1212

- Helispot
- ⚠ Sling Site
- X Division Break
- ▢ Incident Command Post
- ▢ Drop Point
- ⚡ Camp
- ⚠ Lookout
- ⊙ Hot Spot - Spot Fire
- ⊗ Fire Origin
- Other
- ⚠ Road Repair
- ⚠ Fence - Cut/Damaged
- ⚡ Mobile Weather Unit
- ⚡ Repeater
- ⚠ Safety Zone
- ⚠ Draft Site
- ⚠ Restricted Water Source
- H Completed Hand Line
- M Completed Mixed Construction Line
- R Completed Road as Line
- ▬ Planned Burnout
- ▬ Access Route
- ▬ Other
- ▬ Temporary Flight Restriction
- ▬ Contained
- ▬ Uncontained
- ▬ Wildfire Daily Fire Perimeter
- ▬ Closure Area
- ▬ Prescribed Fire (4,774 acres)
- ▬ Other Treatments
- ▬ Thompson Ridge Fire 2023
- ▬ Fire History
- ▬ Fishlake National Forest
- ▬ US Forest Service (USFS)
- ▬ Bureau of Land Management (BLM)
- ▬ State
- ▬ State Parks, Recreation and Wildlife
- ▬ Private



FC Point Type	Label	Latitude WGS84 DDM	Longitude WGS84 DDM
Helispot	H20	38° 11.007' N	112° 25.343' W
Helispot	H6	38° 11.233' N	112° 31.107' W
Helispot	H5	38° 10.258' N	112° 30.817' W
Helispot	H8	38° 13.143' N	112° 29.008' W
Helispot	H10	38° 12.401' N	112° 27.091' W
Helispot	H7	38° 12.258' N	112° 29.410' W
Helispot	H1	38° 09.182' N	112° 28.804' W
Helispot	H2	38° 09.613' N	112° 29.351' W
Helispot	H15	38° 12.666' N	112° 26.024' W
Helispot	H9	38° 11.384' N	112° 29.195' W
Helispot	H50	38° 13.883' N	112° 30.284' W
Helispot	H51	38° 11.830' N	112° 28.441' W
Helispot	H52	38° 11.137' N	112° 29.109' W
Restricted Water Source	Puffer Res	38° 18.993' N	112° 21.753' W
Restricted Water Source	Little Res	38° 15.596' N	112° 29.369' W
Restricted Water Source	Merchant Valley Res	38° 17.231' N	112° 26.633' W
Restricted Water Source	Three Creeks Res	38° 17.767' N	112° 25.140' W
Restricted Water Source	Rollins Pond	38° 12.570' N	112° 33.981' W
Sling Site		38° 12.033' N	112° 26.783' W
Sling Site		38° 12.337' N	112° 27.500' W
Sling Site		38° 12.166' N	112° 26.920' W
Sling Site		38° 12.164' N	112° 26.923' W
Sling Site		38° 12.092' N	112° 28.088' W



1:32,000 | reading | 7/9/2024 1259  
Acres from IR Interpretation and Hand Sketch  
North American 1983 Datum, Lat/Long Grid