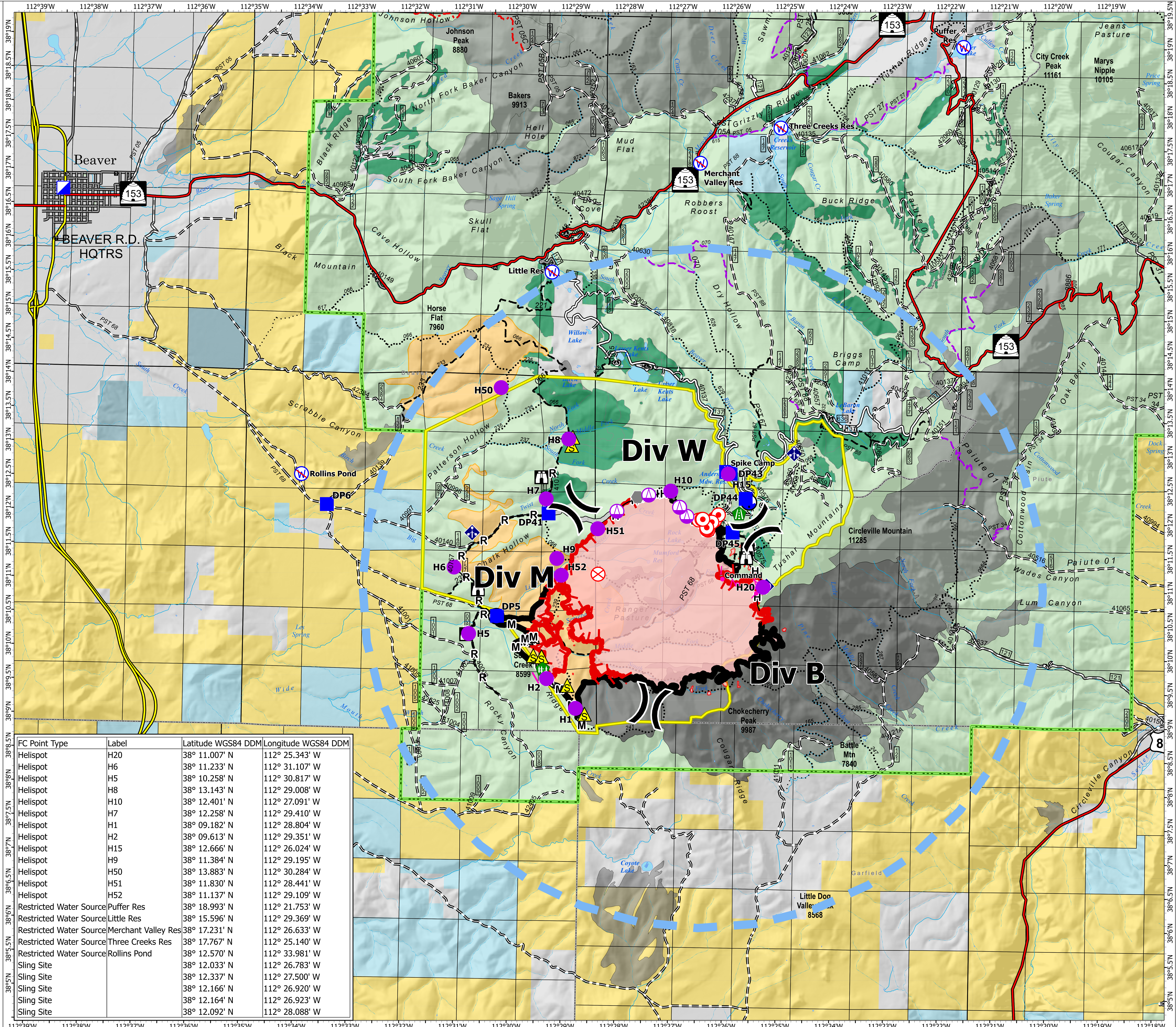


Air Operations

Little Twist
UTFIF240112
07/12/2024 Day

5367 acres at 07/11/2024 0028

- Helispot
- ⚠ Sling Site
- X Division Break
- ▢ Incident Command Post
- ▢ Drop Point
- ⚡ Camp
- ⚠ Lookout
- ⊙ Hot Spot - Spot Fire
- ⊗ Fire Origin
- Other
- ⚠ Road Repair
- ⚠ Fence - Cut/Damaged
- ⚡ Mobile Weather Unit
- ⚡ Repeater
- ⚠ Safety Zone
- ⚠ Draft Site
- ⚠ Restricted Water Source
- Completed Hand Line
- Completed Mixed Construction Line
- Completed Road as Line
- Planned Burnout
- Access Route
- Other
- Temporary Flight Restriction
- Contained
- Uncontained
- Wildfire Daily Fire Perimeter
- Closure Area
- Prescribed Fire (4,774 acres)
- Other Treatments
- Thompson Ridge Fire 2023
- Fire History
- Fishlake National Forest
- US Forest Service (USFS)
- Bureau of Land Management (BLM)
- State
- State Parks, Recreation and Wildlife
- Private



FC Point Type	Label	Latitude WGS84 DDM	Longitude WGS84 DDM
Helispot	H20	38° 11.007' N	112° 25.343' W
Helispot	H6	38° 11.233' N	112° 31.107' W
Helispot	H5	38° 10.258' N	112° 30.817' W
Helispot	H8	38° 13.143' N	112° 29.008' W
Helispot	H10	38° 12.401' N	112° 27.091' W
Helispot	H7	38° 12.258' N	112° 29.410' W
Helispot	H1	38° 09.182' N	112° 28.804' W
Helispot	H2	38° 09.613' N	112° 29.351' W
Helispot	H15	38° 12.666' N	112° 26.024' W
Helispot	H9	38° 11.384' N	112° 29.195' W
Helispot	H50	38° 13.883' N	112° 30.284' W
Helispot	H51	38° 11.830' N	112° 28.441' W
Helispot	H52	38° 11.137' N	112° 29.109' W
Restricted Water Source	Puffer Res	38° 18.993' N	112° 21.753' W
Restricted Water Source	Little Res	38° 15.596' N	112° 29.369' W
Restricted Water Source	Merchant Valley Res	38° 17.231' N	112° 26.633' W
Restricted Water Source	Three Creeks Res	38° 17.767' N	112° 25.140' W
Restricted Water Source	Rollins Pond	38° 12.570' N	112° 33.981' W
Sling Site		38° 12.033' N	112° 26.783' W
Sling Site		38° 12.337' N	112° 27.500' W
Sling Site		38° 12.166' N	112° 26.920' W
Sling Site		38° 12.164' N	112° 26.923' W
Sling Site		38° 12.092' N	112° 28.088' W

