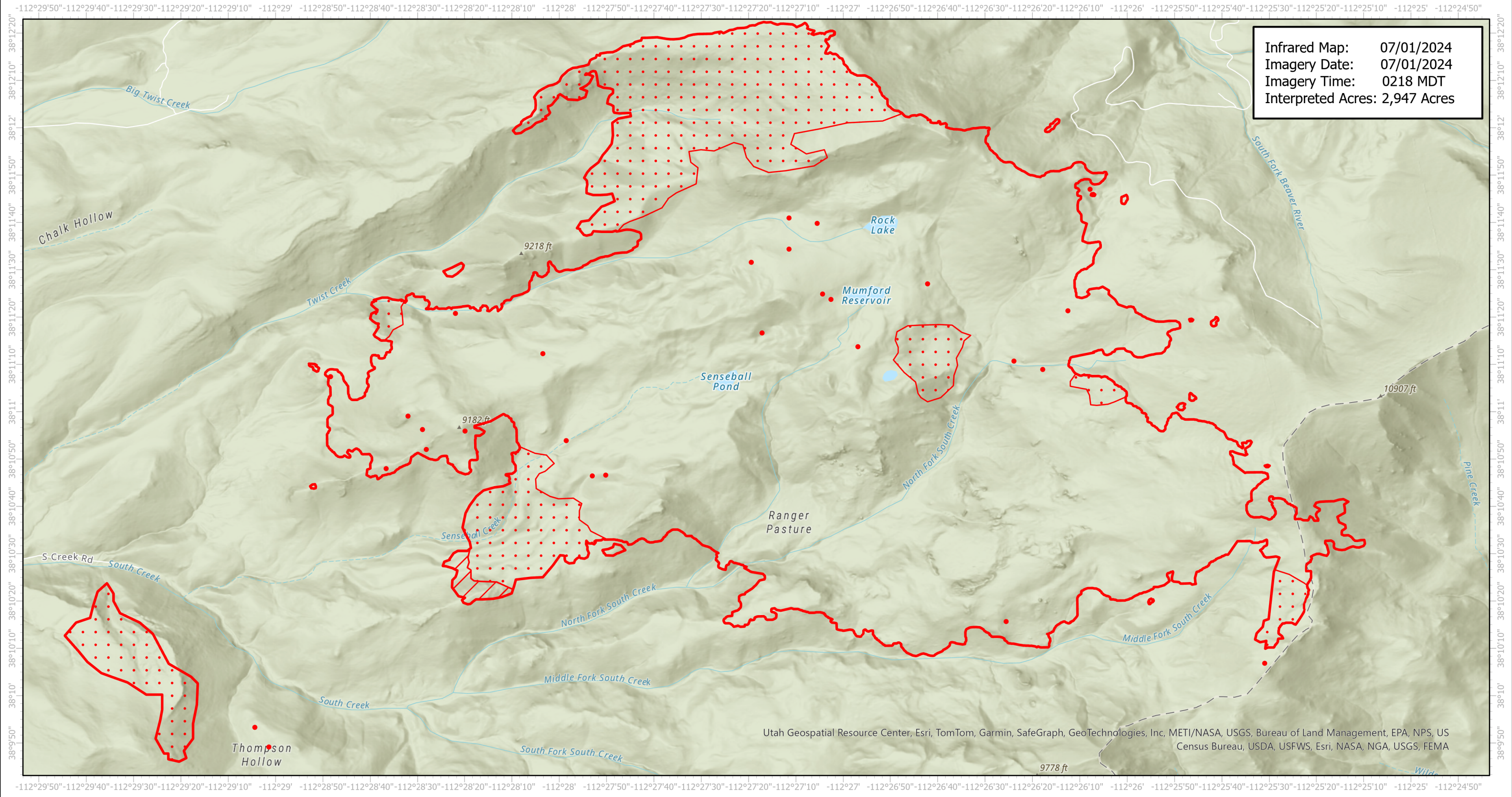


Little Twist Infrared Map

Incident # (UT-FIF-240112)



Infrared Map: 07/01/2024
Imagery Date: 07/01/2024
Imagery Time: 0218 MDT
Interpreted Acres: 2,947 Acres



Utah Geospatial Resource Center, Esri, TomTom, Garmin, SafeGraph, GeoTechnologies, Inc, METI/NASA, USGS, Bureau of Land Management, EPA, NPS, US Census Bureau, USDA, USFWS, Esri, NASA, NGA, USGS, FEMA

N
W E
S

GCS WGS 1984
Scale: 1:23,585

0 1 2 Miles

- IR Isolated Heat Source
- ▨ IR Intense Heat
- ▭ IR Heat Perimeter
- ◻ IR Scattered Heat

Infrared Interpreter: Andrew Owens
email: andrew.owens@usda.gov