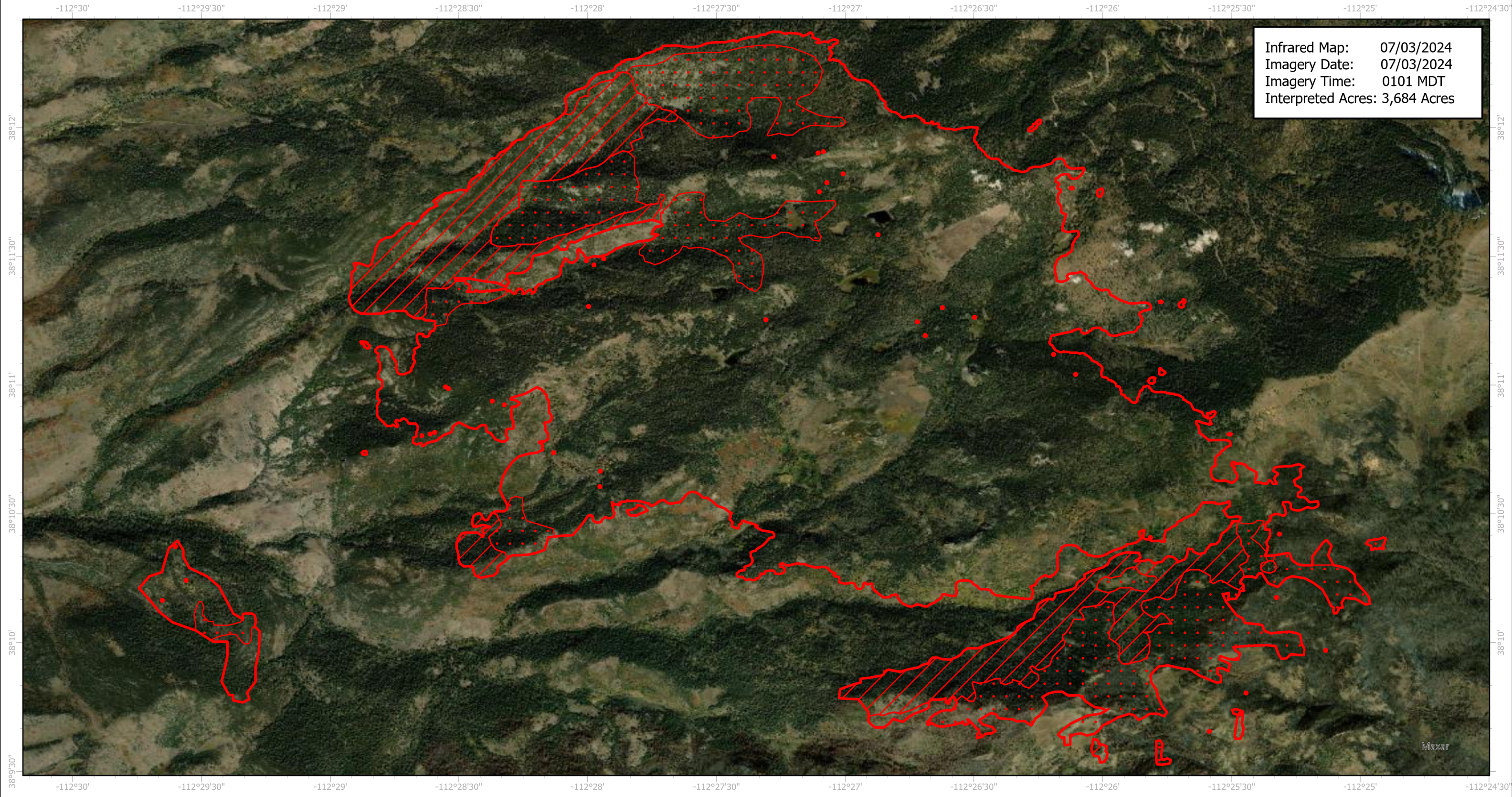


Little Twist Infrared Map

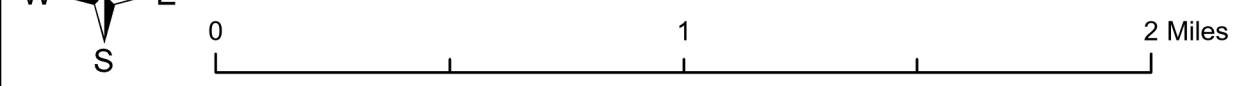
Incident # (UT-FIF-240112)



Infrared Map: 07/03/2024
Imagery Date: 07/03/2024
Imagery Time: 0101 MDT
Interpreted Acres: 3,684 Acres



GCS WGS 1984
Scale: 1:26,000



- IR Isolated Heat Source
- ▨ IR Intense Heat
- ▭ IR Heat Perimeter
- IR Scattered Heat

Infrared Interpreter: Andrew Owens
email: andrew.owens@usda.gov