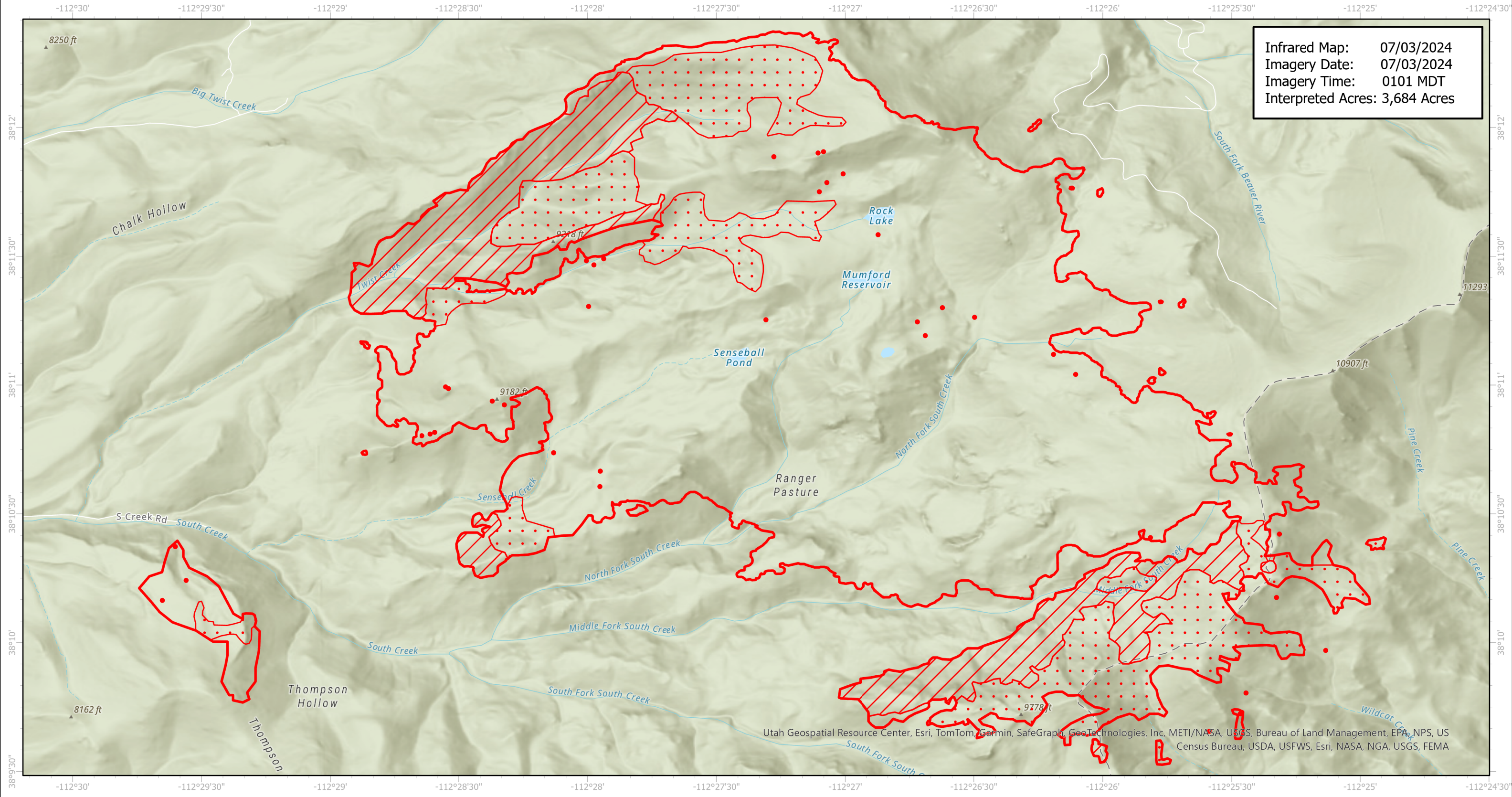


# Little Twist Infrared Map

Incident # (UT-FIF-240112)



Infrared Map: 07/03/2024  
Imagery Date: 07/03/2024  
Imagery Time: 0101 MDT  
Interpreted Acres: 3,684 Acres



Utah Geospatial Resource Center, Esri, TomTom, Garmin, SafeGraph, GeoTechnologies, Inc, METI/NASA, USGS, Bureau of Land Management, EPA, NPS, US Census Bureau, USDA, USFWS, Esri, NASA, NGA, USGS, FEMA

GCS WGS 1984  
Scale: 1:26,000

- IR Isolated Heat Source
- IR Intense Heat
- IR Heat Perimeter
- IR Scattered Heat

Infrared Interpreter: Andrew Owens  
email: andrew.owens@usda.gov