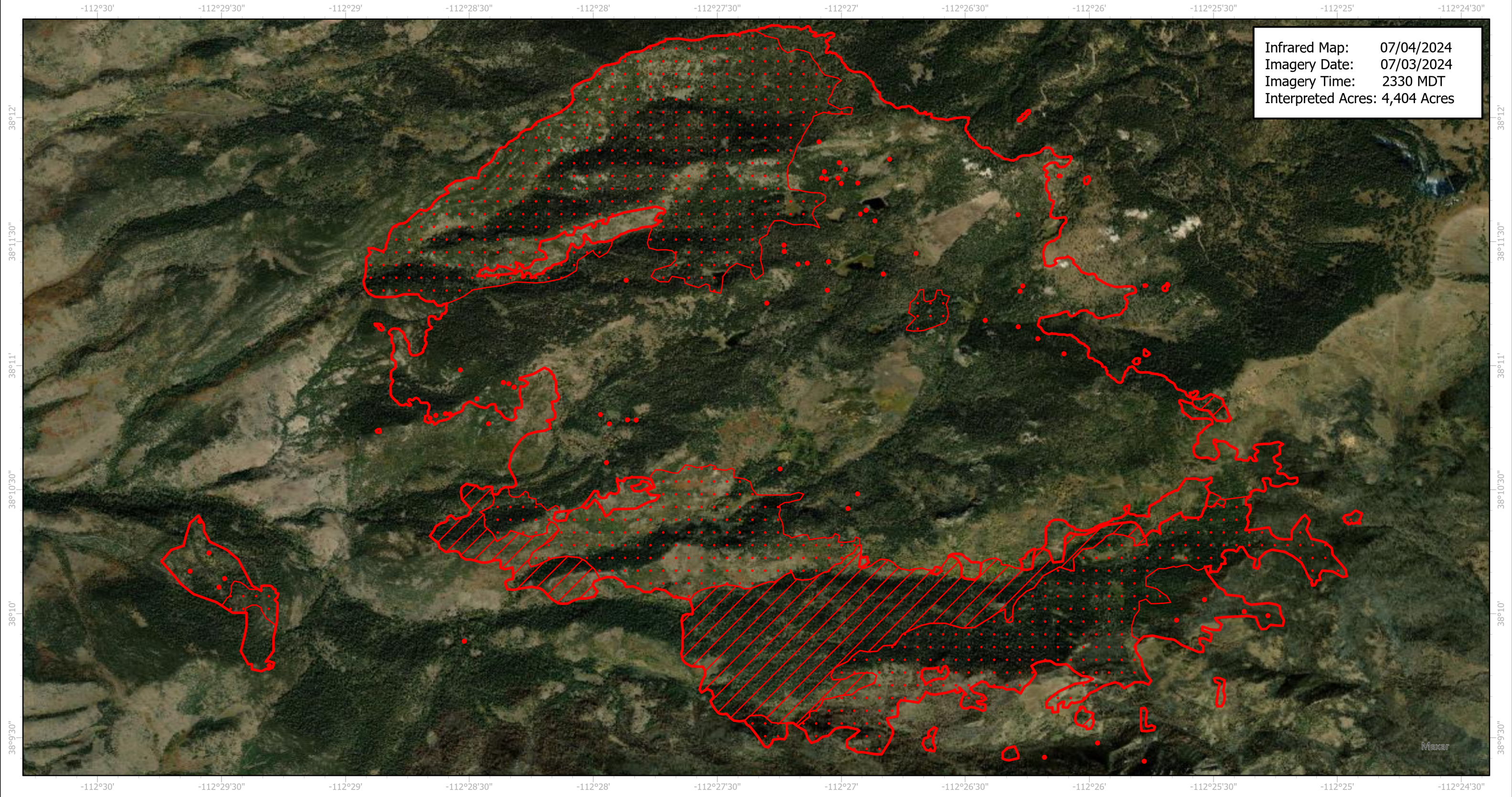


# Little Twist Infrared Map

Incident # (UT-FIF-240112)



Infrared Map: 07/04/2024  
Imagery Date: 07/03/2024  
Imagery Time: 2330 MDT  
Interpreted Acres: 4,404 Acres



GCS WGS 1984  
Scale: 1:27,000

- IR Isolated Heat Source
- ▨ IR Intense Heat
- ▭ IR Heat Perimeter
- ◌ IR Scattered Heat

Infrared Interpreter: Andrew Owens  
email: andrew.owens@usda.gov