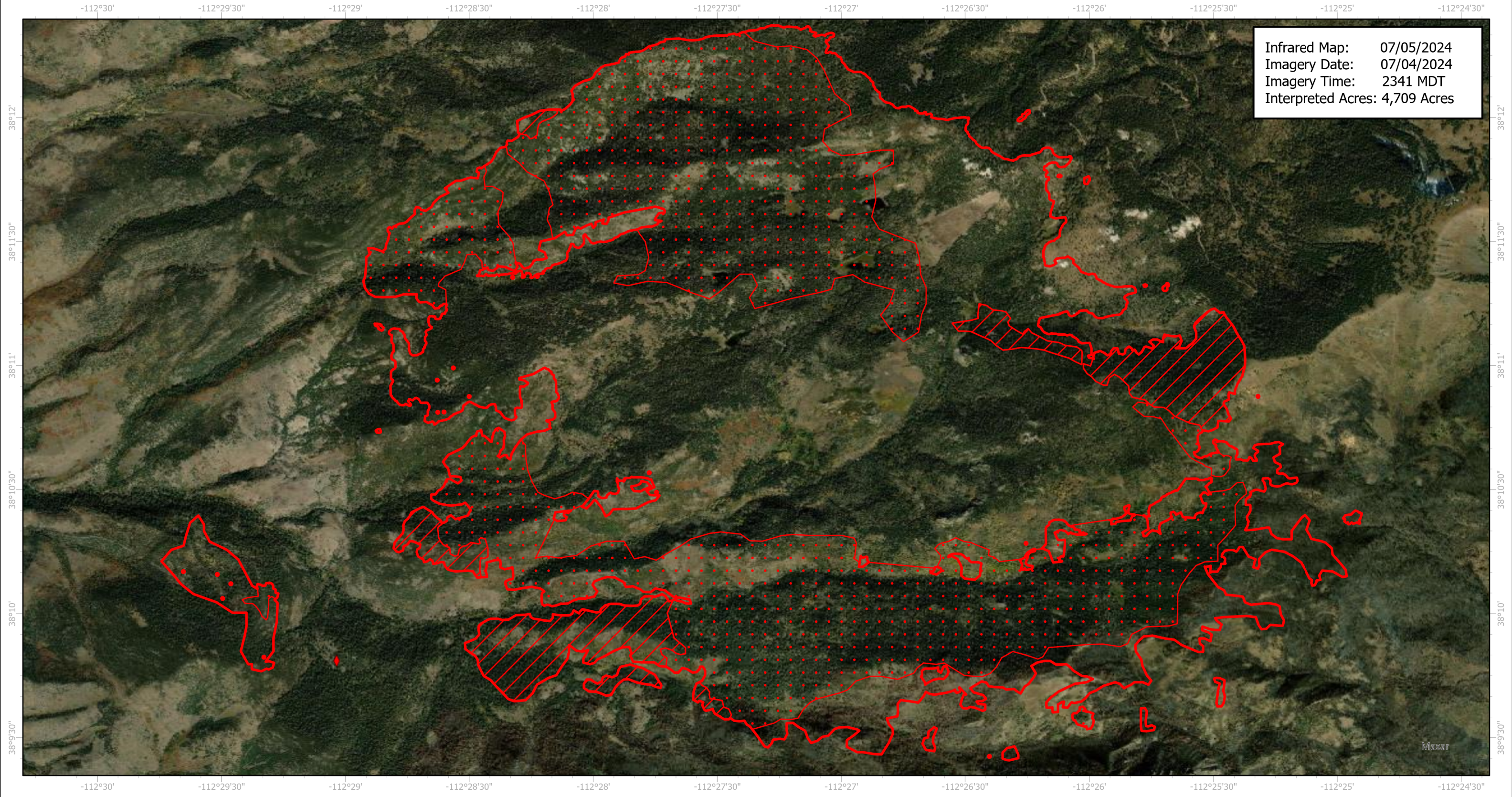


Little Twist Infrared Map

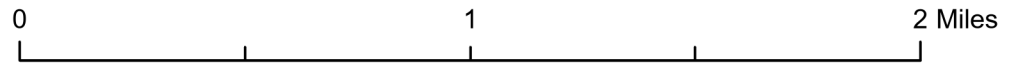
Incident # (UT-FIF-240112)



Infrared Map: 07/05/2024
Imagery Date: 07/04/2024
Imagery Time: 2341 MDT
Interpreted Acres: 4,709 Acres



GCS WGS 1984
Scale: 1:27,000



- IR Isolated Heat Source
- ◊ Possible IR Heat Source
- ◻ IR Heat Perimeter
- ◻ IR Intense Heat
- ◻ IR Scattered Heat

Infrared Interpreter: Andrew Owens
email: andrew.owens@usda.gov