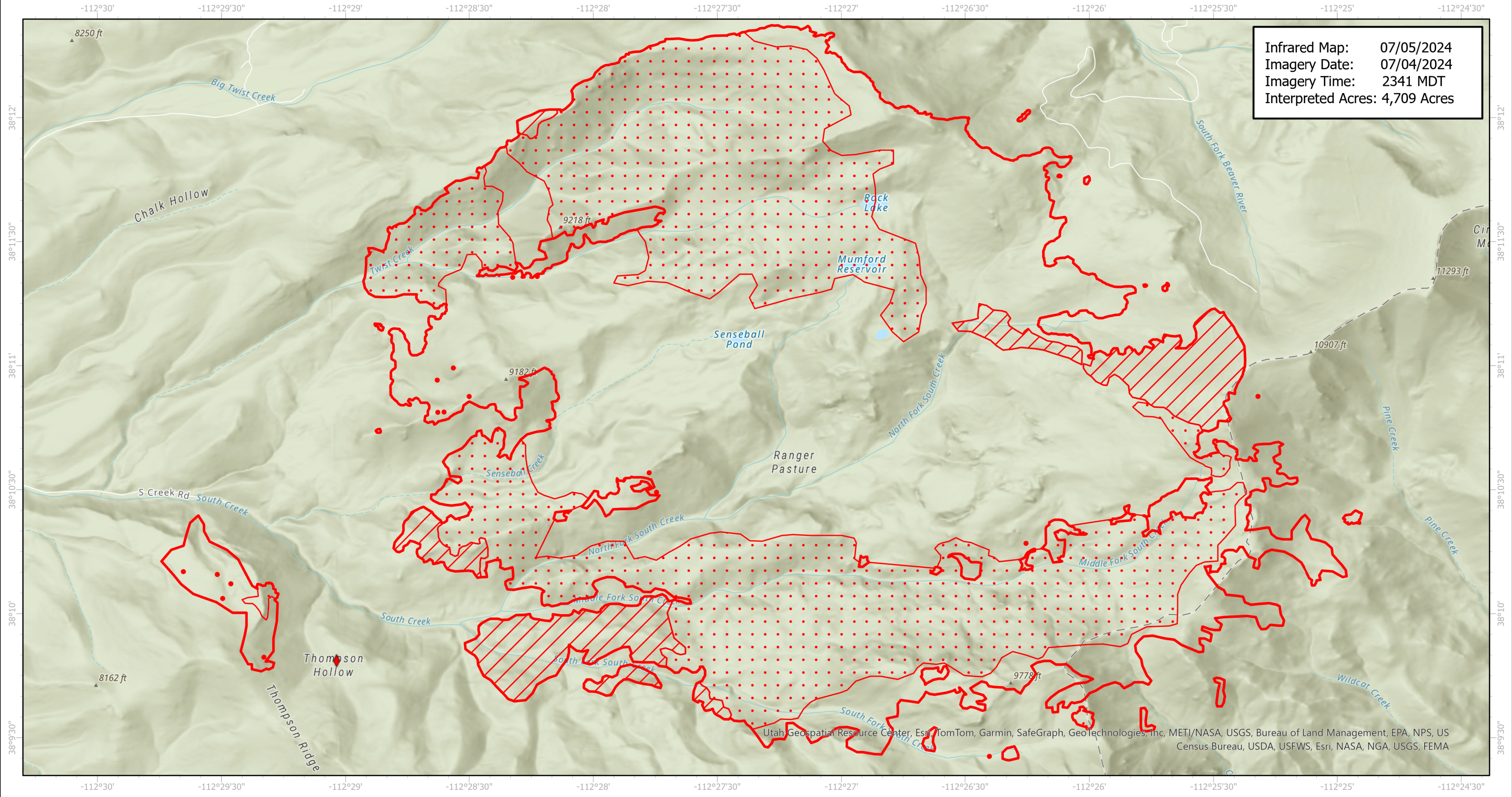


# Little Twist Infrared Map

Incident # (UT-FIF-240112)



Infrared Map: 07/05/2024  
Imagery Date: 07/04/2024  
Imagery Time: 2341 MDT  
Interpreted Acres: 4,709 Acres



Utah Geospatial Resource Center, Esri, TomTom, Garmin, SafeGraph, GeoTechnologies, Inc, METI/NASA, USGS, Bureau of Land Management, EPA, NPS, US Census Bureau, USDA, USFWS, Esri, NASA, NGA, USGS, FEMA

GCS WGS 1984  
Scale: 1:27,000

- IR Isolated Heat Source
- ◆ Possible IR Heat Source
- ▭ IR Heat Perimeter
- ▨ IR Intense Heat
- ◻ IR Scattered Heat

Infrared Interpreter: Andrew Owens  
email: andrew.owens@usda.gov