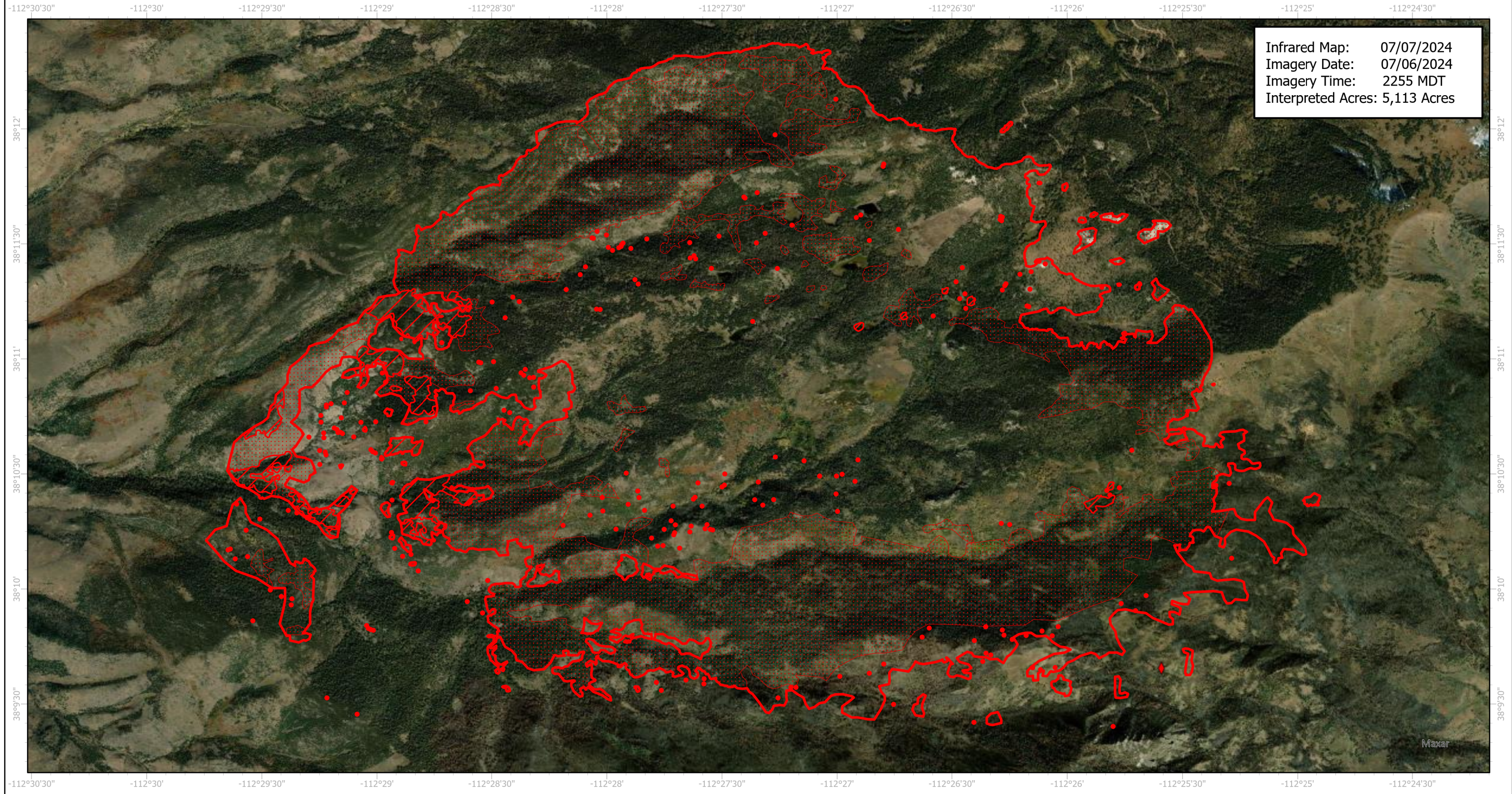
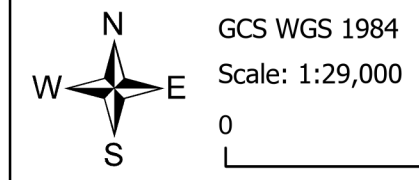


Little Twist Infrared Map

Incident # (UT-FIF-240112)



Infrared Map: 07/07/2024
Imagery Date: 07/06/2024
Imagery Time: 2255 MDT
Interpreted Acres: 5,113 Acres



- IR Isolated Heat Source
- ◊ Possible IR Heat Source
- ◻ IR Heat Perimeter
- ▨ IR Intense Heat
- ▤ IR Scattered Heat

Infrared Interpreter: Andrew Owens
email: andrew.owens@usda.gov