

# Air Ops

Logan

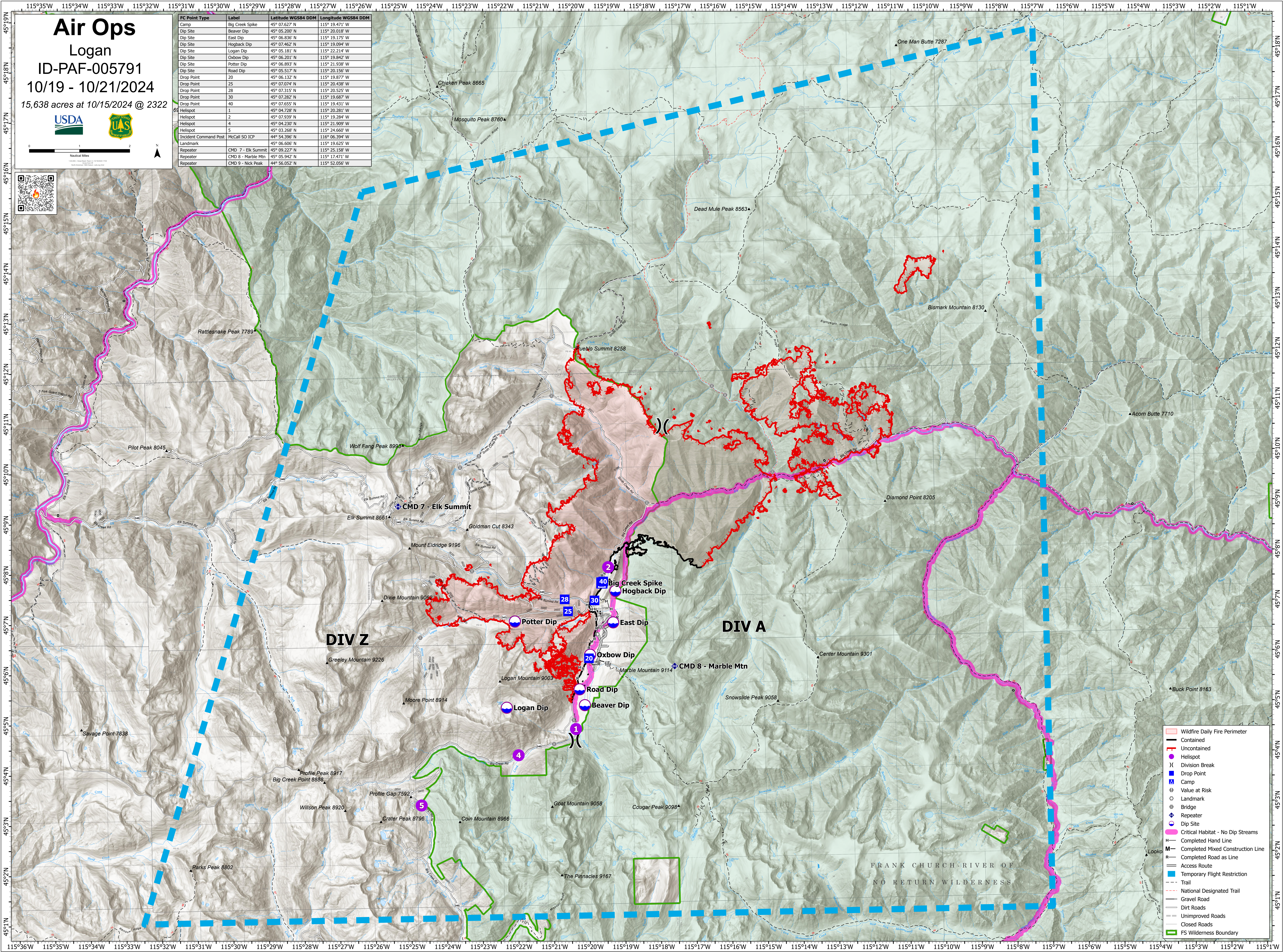
ID-PAF-005791

10/19 - 10/21/2024

15,638 acres at 10/15/2024 @ 2322



FC Point Type	Label	Latitude WGS84 DDM	Longitude WGS84 DDM
Camp	Big Creek Spike	45° 07.627' N	115° 19.471' W
Dip Site	Beaver Dip	45° 05.200' N	115° 20.018' W
Dip Site	East Dip	45° 06.836' N	115° 19.175' W
Dip Site	Hogback Dip	45° 07.462' N	115° 19.094' W
Dip Site	Logan Dip	45° 05.181' N	115° 22.214' W
Dip Site	Oxbow Dip	45° 06.201' N	115° 19.842' W
Dip Site	Potter Dip	45° 06.893' N	115° 21.938' W
Dip Site	Road Dip	45° 05.517' N	115° 20.156' W
Drop Point	20	45° 06.132' N	115° 19.877' W
Drop Point	25	45° 07.074' N	115° 20.438' W
Drop Point	28	45° 07.315' N	115° 20.525' W
Drop Point	30	45° 07.282' N	115° 19.687' W
Drop Point	40	45° 07.655' N	115° 19.431' W
Helispot	1	45° 04.728' N	115° 20.281' W
Helispot	2	45° 07.939' N	115° 19.284' W
Helispot	4	45° 04.230' N	115° 21.909' W
Helispot	5	45° 03.268' N	115° 24.660' W
Incident Command Post	McCall SO ICP	44° 54.396' N	116° 06.394' W
Landmark		45° 05.606' N	115° 19.625' W
Repeater	CMD 7 - Elk Summit	45° 09.227' N	115° 25.158' W
Repeater	CMD 8 - Marble Mtn	45° 05.942' N	115° 17.471' W
Repeater	CMD 9 - Nick Peak	44° 56.052' N	115° 52.056' W



- Wildfire Daily Fire Perimeter
- Contained
- Uncontained
- Helispot
- Division Break
- Drop Point
- Camp
- Value at Risk
- Landmark
- Bridge
- Repeater
- Dip Site
- Critical Habitat - No Dip Streams
- Completed Hand Line
- Completed Mixed Construction Line
- Completed Road as Line
- Access Route
- Temporary Flight Restriction
- Trail
- National Designated Trail
- Gravel Road
- Dirt Roads
- Unimproved Roads
- Closed Roads
- FS Wilderness Boundary