

# **Middle Fork Complex**

## **Wapiti**

## **Bull Trout**

### **Incident Action Plan**


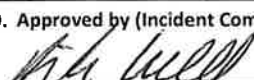



Saturday August 10, 2024

Day Operations 0700-2100

*For Check-in and Maps:*



<b>INCIDENT OBJECTIVES</b>	<b>1. Incident Name</b> <b>Middle Fork Complex;</b> <b>Wapiti; Bull Trout</b>	<b>2. Date Prepared</b> August 9, 2024	<b>3. Time</b> 2200
<b>4. Operational Period: August 10, 2024 Day Operations 0700 - 2100</b>			
<p><b>Incident Objectives</b></p> <ol style="list-style-type: none"> <li>1. Establish tactical operations within the boundaries of the identified strategy. Utilize existing roads and trail systems, changes in vegetation, fuels, weather and natural barriers to minimize suppression-related impacts on the natural and cultural resources, and any other identified improvements that occur within the fire areas.</li> <li>2. Maintain good communication with cooperators, stakeholders and the public affected by these incidents.</li> <li>3. Mitigate impacts to threatened Bull trout through coordination with local Resource Advisors, and follow all management requirements specific to TEPC species within the identified Planning Area.</li> </ol> <p><b>Critical Values</b></p> <ul style="list-style-type: none"> <li>• Middle Fork Complex (Nellie, Anderson, Bulldog) - private property and Bunch Drive communities, south of Lightning Creek Community; private residences west of Lightning Creek and Bunch Drive communities; isolated FS assets along Middle Fork Payette River corridor, FS 698, and Tie Creek campground (CG), Hardscrabble CG, Rattlesnake CG; FAA communication structure, east of Scott Mtn.</li> <li>• Wapiti – Permitted summer homes, Sawtooth Lodge, Sawtooth National Recreation Area, HWY 21 corridor and cultural/resource values.</li> <li>• Bull Trout – Hwy 21 corridor, communication tower, cultural/resource values.</li> </ul>			
<b>8. Attachments (X if attached)</b>			
<input checked="" type="checkbox"/>	ICS 203	<input checked="" type="checkbox"/>	Safety Message
<input checked="" type="checkbox"/>	Incident Weather Forecast	<input checked="" type="checkbox"/>	ICS 206 Medical Plan
<input checked="" type="checkbox"/>	Fire Behavior Forecast		Resource Advisor Message
<input checked="" type="checkbox"/>	ICS 204 Division Assignment Lists		Demob Message & Tentative List
<input checked="" type="checkbox"/>	ICS 220 Air Operations Summary	<input checked="" type="checkbox"/>	Finance Message
<input checked="" type="checkbox"/>	ICS 205 Incident Radio Comm Plan	<input checked="" type="checkbox"/>	Human Resources Message
<b>9. Prepared by (Planning Section Chief)</b> 	<b>9. Approved by (Incident Commander)</b>  		

<b>ORGANIZATIONAL ASSIGNMENT LIST (ICS 203)</b>	<b>1. Incident: Wapiti; Bull Trout; Middle Fork Complex</b>	<b>2. Date Prepared: 8/9/2024</b>	
<b>3. Time Prepared: 2000 hrs</b>	<b>4. Operational Period: August 10, 2024 0700-2100 DAY Operations</b>		
<b>5. Incident Commanders</b>		<b>9. Operations Section</b>	
Incident Commander	Rick Connell	Strategic Ops	Paul Diaz
Deputy Incident Commander	Craig Glazier	Planning Ops	Ashley Sites
Safety Officer	Matt Nelson; Mike Cachero; Jonathan White (T)		
Information Officer	Chris Ziegler; Terina Hill (V)	<b>a. Branch I</b>	
Liaison Officer	Bryan Donner	Branch Director	Kevin Smith; Ashton Ferruzzi (T)
<b>6. Agency Representatives</b>		Division D	Jessica Vincent; Sam Lewis (T)
Boise Forest Supervisor	Jared Schuster	Division O	unstaffed
Boise Forest Agency Administrator	Jake Strohmeier; David Francomb (T)	Division P	Nick Peters; Troy Sanders (T)
Idaho Department of Lands	Dean Johnson	Division T	Mike Tuffelmire; Dustin Roper (T)
<b>6b. Cooperators</b>		<b>b. Branch II</b>	
Boise County Sheriff	Scott Turner	Branch Director	Adam Carr
Garden Valley RFD	Paul Cleveland	Division A	Rob Spence
<b>7. Planning Section</b>		Division M	Dave MacClay-Schulte; Javier Kirker (T)
Chief	Mark Glos; Julie Shea	Division V	Dan Helderline; Charlie Fisher (T)
Resource Unit	Patty Bates; Matt Reed (T)		
Demob Unit	Sue Puddy	<b>c. Air Operations Branch</b>	
Situation Unit	Jason Willoughby; Brett Gore	AOBD	Jeff Polack
GISS	Jeff Sprovkin; Shannon Rebinski (T); Mitch Carey (T)	ASGS	Steve Croy
Fire Behavior	Mike Pagoaga; Mike Locke	Helibase Manager	
Incident Meteorologist	Mike Seaman		
LTAN	Jon Rieck; Todd Erdody	<b>10. Finance Section</b>	
SOPL	Justin Pappani	Chief	Biddy Simet; Wendy McCartney
Lead READ	Matt Robinson		
ITSS	Michael Harper; Victor Taus; Ryan Land (T)	Procurement	Tammy Peterson (T)
<b>8. Logistics Section</b>		Time Unit Leader	Quoya Waters
Chief	Russell Riebe; Peter Pappas	Personnel Time	Rhea Warren (T)
Supply Unit Leader	Meghan Carosella	Equipment Time	Karen Sargeant
Ordering Manager	Darcy Wheeler (V)	Cost Unit Leader	Terry Groesbeck (T)
Medical Unit Leader	Rosemary Meyers	Comp Unit	
Communications	Mike Sherer		
Facility Unit Leader	Pat Nelson; Jon Kautt		
Ground Support	Kyler McCarrel; Nick Lyytimen (T)		
Security Manager	John Velsvaag	Prepared by Resource Unit Leader): Patty Bates	

Spot Forecast for Bulldog...USFS  
National Weather Service Boise ID  
607 PM MDT Fri Aug 9 2024

Forecast is based on forecast start time of 0700 MDT on August 10.  
If conditions become unrepresentative...contact the National Weather  
Service.

Please contact our office at (208)334-9060, if you have questions  
or concerns with this forecast.

...SHOWER/THUNDERSTORM POSSIBLE IN THE MORNING, THEN CLEARING...

.DISCUSSION...

A weak upper level system will bring a chance of showers and  
thunderstorms to the fire as early as 4 AM MDT, and continuing through  
noon. Erratic gusty winds will accompany any showers or storms that  
form. Storms will move out by noon, leaving clearing skies and  
a little less heat than in recent days. Winds will be breezy in the  
afternoon today, with significantly weaker winds Sunday.

.SATURDAY...

Sky/weather.....A 20 percent chance of showers and thunderstorms  
in the morning, then decreasing clouds.  
Max temperature.....87 to 92.  
Min humidity.....18 to 23 percent.  
CWR.....10 percent.  
LAL.....2 in the morning decreasing to 1 in the  
afternoon.  
Wind - 20 foot.....Less than 3 mph in the morning becoming west 6  
to 9 mph with gusts to 14 mph in the afternoon.  
Gusty and erratic winds expected near thunderstorms  
in the morning.  
Mixing height.....12000 ft AGL.  
Transport winds.....West around 15 mph.  
Haines Index.....4 low.  
Ventilation Index...1800 excellent.

.SATURDAY NIGHT...

Sky/weather.....Mostly clear.  
Min temperature.....56 to 62.  
Max humidity.....47 to 67 percent.  
CWR.....0 percent.  
LAL.....1.  
Wind - 20 foot.....Northwest 4 to 7 mph in the evening, becoming northeast  
around midnight.  
Mixing height.....500 ft AGL.  
Transport winds.....Northeast around 5 mph.  
Haines Index.....4 low.  
Ventilation Index...25 poor.

\$\$

Forecaster...Parker

Spot Forecast for Wapiti Fire...USFS  
National Weather Service Boise ID  
617 PM MDT Fri Aug 9 2024

Forecast is based on forecast start time of 1800 MDT on August 09.  
If conditions become unrepresentative...contact the National Weather  
Service.

Please contact our office at (208)334-9060, if you have questions  
or concerns with this forecast.

...ISOLATED THUNDERSTORMS THROUGH SATURDAY, THEN CLEARING...  
...BREEZY SATURDAY AFTERNOON AND MONDAY AFTERNOON...

.DISCUSSION...

A weak shortwave will move through the area and bring isolated  
showers and thunderstorms through Saturday evening. Erratic  
outflow winds will accompany any showers or storms that form.  
Clearing expected by Saturday evening, with terrain driven  
winds. Southwest winds increase on Monday afternoon.

.SATURDAY...

Sky/weather.....Partly sunny with a chance of showers and a  
slight chance of thunderstorms. Chance of  
precipitation 30 percent.

Max temperature.....74 to 80.

Min humidity.....23 to 28 percent.

CWR.....20 percent.

LAL.....2 in the morning increasing to 3 in the  
afternoon.

Wind - 20 foot.....Southeast around 3 mph in the morning shifting  
to the west with gusts to around 16 mph in the  
afternoon. Gusty and erratic winds expected  
near thunderstorms.

Mixing height.....11500 ft AGL.

Transport winds.....West around 15 mph.

Haines Index.....4 low.

Ventilation Index...1725 excellent.

.SATURDAY NIGHT...

Sky/weather.....Mostly clear.

Min temperature.....53 to 58.

Max humidity.....44 to 50 percent.

CWR.....0 percent.

LAL.....1.

Wind - 20 foot.....West 4 to 9 mph with gusts to around 16 mph in  
the evening shifting to the east overnight.

Mixing height.....300 ft AGL.

Transport winds.....East around 5 mph.

Haines Index.....4 low.

Ventilation Index...15 poor.

# FIRE BEHAVIOR FORECAST

**FORECAST NUMBER:** 1

**TYPE OF FIRE:** Wildland Fire

**FIRE NAME:** Middle Fork Complex

**OPERATIONAL PERIOD:** Sat, 08/10/2024

**DATE ISSUED:** August 9, 2024

**TIME ISSUED:** 1900

**UNIT:** ID-BOF

**SIGNED:** *Mike Pagoaga* - FBAN

## WEATHER

**Temp:** 80-90 **RH:** 20-30% **Haines:** 4

**Wind:** West 6 – 9, Gust up to 16 mph

Erratic, gusty outflow winds with passing thunderstorms, clearing by 1200

*Local Weather Thresholds that shout **WATCH OUT**  
Temperatures above 80°, Relative Humidity below 20%,  
20' winds above 20 mph*

## FUELS

Predominant fuels burning timber understory (TU5), and moderate load, dry climate shrub (SH2), timber litter (TL8) with inter-mixed conifer stands and sub-alpine stringers at higher elevations, heavy dead fuels completely consuming.

Dead 1,000 Hr near 11%  
ERC approaching the 90<sup>th</sup> percentile

## FIRE BEHAVIOR

### General Fire Behavior:

Potential for fire growth in various directions as skies become clear. Short-range spotting along ridgelines in general wind direction into receptive dead fuels. Smoke shading will limit fire behavior in the morning. Expect fire behavior to increase around 1400 as the inversion begins to lift.

*Fine Dead Fuel Moisture: 5% unshaded, 8% shaded  
Probability of Ignition 40-70% depending on shading*

### Specific Fire Behavior:

#### **Branch I**

Expect fire behavior to be more active earlier than yesterday. Clearing skies will encourage convection. Spread direction will vary depending on alignment with winds and slope. Watch for slope reversals and short-range spotting.

#### **Branch II**

Fire behavior will be similar to yesterday. Erratic outflow winds in the morning can push the fire downslope to the south and west. Continued backing into South Fork Payette River. Clearing will happen after 1600. This will increase fire behavior on all active flanks.

## Safety

Pay attention to what time the fire becomes active. Plan operations to take advantage of times of decreased activity. As the fire becomes more active, timing will become more critical.

<b>DIVISION ASSIGNMENT LIST</b> ICS-204	1. BRANCH <b>I</b>	2. DIVISION/GROUP <b>D</b>
	3. INCIDENT NAME <b>Middle Fork Complex</b>	
4. OPERATIONAL PERIOD <b>Date: August 10, 2024</b> <b>Time: 0700 - 2100</b>		

**OPERATIONS PERSONNEL**

PLANNING OPS: Ashley Sites STRATEGIC OPS: Paul Diaz DIVISION SUPERVISOR: Jessica Vincent; Sam Lewis (T)	BRANCH DIRECTOR: Kevin Smith; Ashton Ferruzzi (T) AIR OPERATIONS BRANCH DIRECTOR: Jeff Polack
---	--

**RESOURCES ASSIGNED THIS PERIOD**

STRIKE TEAM/TASK FORCE/RESOURCE DESIGNATOR	Last Shift	LEADER	NUMBER PERSONS	DROP OFF POINT/TIME	PICK UP POINT/TIME
HC2IA Boise Crew 3                                  C-4	8/19	William Streff	21	ICP / 0700	ICP / 2100

**CONTROL OPERATIONS:**

**Task:** Scout potential anchor on the west side of the fire.

**Purpose:** Prevent fire growth to the north and west.

**End State:** Have potential control lines identified and determine resource needs for operations.

- SPECIAL INSTRUCTIONS:**
- Use field maps to collect suppression activities and values as risk

FUNCTION	FREQUENCY Rx	FREQUENCY Tx	CHA N	FUNCTION	FREQUENCY Rx	FREQUENCY Tx	CHAN.
TACTICAL	R4 TAC 2	171.400 (167.9)	164.1625 (127.3)	A/G PRIMARY	166.6000	166.6000	
COMMAND	BOF North Repeater	166.8875	166.8875				
COMMAND							

<b>PREPARED BY (RESOURCE UNIT LEADER)</b> /s/ <b>Patty Bates, RESL</b>	<b>APPROVED BY (PLANNING SECTION CHIEF)</b> /s/ <b>Mark Glos, PSC2</b>	<b>DATE</b> 8/9/24	<b>TIME</b> 2200
---	---	-----------------------	---------------------

# DIVISION ASSIGNMENT LIST

ICS-204

1. BRANCH

I

2. DIVISION/GROUP

O

3. INCIDENT NAME

**Middle Fork Complex**

4. OPERATIONAL PERIOD

Date: August 10, 2024

Time: 0700 - 2100

**OPERATIONS PERSONNEL**

PLANNING OPS: Ashley Sites  
 STRATEGIC OPS: Paul Diaz  
 DIVISION SUPERVISOR:

BRANCH DIRECTOR: Kevin Smith; Ashton Ferruzzi (T)  
 AIR OPERATIONS BRANCH DIRECTOR: Jeff Polack

**RESOURCES ASSIGNED THIS PERIOD**

STRIKE TEAM/TASK FORCE/RESOURCE DESIGNATOR	Last Shift	LEADER	NUMBER PERSONS	DROP OFF POINT/TIME	PICK UP POINT/TIME
--	------------	--------	----------------	---------------------	--------------------

Unstaffed

CONTROL OPERATIONS:

SPECIAL INSTRUCTIONS:

FUNCTION		FREQUENCY Rx	FREQUENCY Tx	CHAN	FUNCTION		FREQUENCY Rx	FREQUENCY Y Tx	CHAN.
TACTICAL	R4 TAC 2	171.400 (167.9)	164.1625 (127.3)		A/G PRIMARY		166.6000	166.6000	
COMMAND	BOF North Repeater	166.8875	166.8875						
COMMAND									

PREPARED BY (RESOURCE UNIT LEADER)

/s/ **Patty Bates**, RESL

APPROVED BY (PLANNING SECTION CHIEF)

/s/ **Mark Glos**, PSC2

DATE

8/9/24

TIME

2200



# DIVISION ASSIGNMENT LIST

ICS-204

1. BRANCH

I

2. DIVISION/GROUP

P

3. INCIDENT NAME

**Middle Fork Complex**

4. OPERATIONAL PERIOD

**Date: August 10, 2024**  
**Time: 0700 - 2100**

**OPERATIONS PERSONNEL**

**PLANNING OPS:** Ashley Sites  
**STRATEGIC OPS:** Paul Diaz  
**DIVISION SUPERVISOR:** Nick Peters; Troy Sanders (T)

**BRANCH DIRECTOR:** Kevin Smith; Ashton Ferruzzi (T)  
**AIR OPERATIONS BRANCH DIRECTOR:** Jeff Polack

**RESOURCES ASSIGNED THIS PERIOD**

STRIKE TEAM/TASK FORCE/RESOURCE DESIGNATOR	Last Shift	LEADER	NUMBER PERSONS	DROP OFF POINT/TIME	PICK UP POINT/TIME
ENG5 Flat Rock Construction E-1				ICP / 0700	ICP / 2100
ENG3 National Wildland Fire E-2					
ENG6 Denver FD Engine 24 E-3					
ENG6 Aspen FPD 24 Brush 61 E-4					

**CONTROL OPERATIONS:**

**Task:** Scout potential anchor on the west side of the fire.  
**Purpose:** Prevent fire growth to the north and west.  
**End State:** Have potential control lines identified and determine resource needs for operations.

**SPECIAL INSTRUCTIONS:**

- Use field maps to collect suppression activities and values as risk

FUNCTION	FREQUENCY Rx	FREQUENCY Tx	CHAN	FUNCTION	FREQUENCY Rx	FREQUENCY Y Tx	CHAN.
TACTICAL	R4 TAC 2	171.400 (167.9)	164.1625 (127.3)	A/G PRIMARY	166.6000	166.6000	
COMMAND	BOF North Repeater	166.8875	166.8875				
COMMAND							

PREPARED BY (RESOURCE UNIT LEADER)

/s/ **Patty Bates**, RESL

APPROVED BY (PLANNING SECTION CHIEF)

/s/ **Mark Glos**, PSC2

DATE

8/9/24

TIME

2200

<b>DIVISION ASSIGNMENT LIST</b> ICS-204	1. BRANCH <b>I</b>	2. DIVISION/GROUP <b>T</b>
--	-----------------------	-------------------------------

3. INCIDENT NAME <b>Middle Fork Complex</b>	4. OPERATIONAL PERIOD <b>Date: August 10, 2024</b> <b>Time: 0700 - 2100</b>
--	---

**OPERATIONS PERSONNEL**

<b>PLANNING OPS:</b> Ashley Sites <b>STRATEGIC OPS:</b> Paul Diaz <b>DIVISION SUPERVISOR:</b> Mike Tuffelmire; Dustin Roper (T)	<b>BRANCH DIRECTOR:</b> Kevin Smith; Ashton Ferruzzi (T) <b>AIR OPERATIONS BRANCH DIRECTOR:</b> Jeff Polack
---	--

**RESOURCES ASSIGNED THIS PERIOD**

STRIKE TEAM/TASK FORCE/RESOURCE DESIGNATOR	Last Shift	LEADER	NUMBER PERSONS	DROP OFF POINT/TIME	PICK UP POINT/TIME	
HC1 San Juan IHC	C-3	8/14	Tom Allbright	25	ICP / 0700	ICP/2100
HC2IA Miller Timber	C-10	8/18	Mike Hortert	20	ICP / 0700	ICP/2100
HC2IA Anthracite	C-2	8/21	Troy Stimaker	20	ICP / 0700	ICP/2100
HC2 G & C Forestry		8/21	Luis Vera	20	ICP / 0700	ICP/2100
HC 2 Torres Contracting	C-11	8/15	Angel Cortes	20	ICP / 0700	ICP/2100
*ENG3 UT-UWF Engine 321	E-7	8/21	Collin Bertoch	7	ICP / 0700	ICP/2100
DOZ2 Sandhollow Fire Department	E-6				ICP / 0700	ICP/2100
CHP2 Flying V Tree	E-15	8/24	Cody Vincent	3	ICP / 0700	ICP/2100
TFLD Jack Sipple				1	ICP / 0700	ICP/2100

**CONTROL OPERATIONS:**

**TASK:** Continue direct and indirect line construction from Middle Fork Payette River to 611G Raod and then on towards Road 611. Construct indirect line around Lightning Creek subdivision and plumb with hoselay. Prep Road 611.

**PURPOSE:** Keep the fire north and east of structures along indirect line and north of Road 611 and Lightning Creek community

**END STATE:** Completed control line from Middle Fork Payette River to Lightning Ridge trailhead. Complete indirection handline and install hoselay.

**SPECIAL INSTRUCTIONS:**

\* Identified for IA

Use Field Maps to collect suppression activities and values at risk

FUNCTION		FREQUENCY Rx	FREQUENCY Tx	CHAN	FUNCTION		FREQUENCY Rx	FREQUENCY Y Tx	CHAN.
TACTICAL	R4 TAC 2	166.8875	164.1625		A/G PRIMARY		166.6000	166.6000	
COMMAND	BOF North Repeater	171.4500 (167.9)	166.8875 (167.9)						
COMMAND									

PREPARED BY (RESOURCE UNIT LEADER) <b>/s/ Patty Bates, RESL</b>	APPROVED BY (PLANNING SECTION CHIEF) <b>/s/ Mark Glos, PSC2</b>	DATE <b>8/9/24</b>	TIME <b>2200</b>
--	--	-----------------------	---------------------

# DIVISION ASSIGNMENT LIST

ICS-204

1. BRANCH

II

2. DIVISION/GROUP

A

3. INCIDENT NAME

**Middle Fork Complex**

4. OPERATIONAL PERIOD

Date: August 10, 2024

Time: 0700 - 2100

### OPERATIONS PERSONNEL

PLANNING OPS: Ashley Sites  
STRATEGIC OPS: Paul Diaz  
DIVISION SUPERVISOR: Rob Spence

BRANCH DIRECTOR: Adam Carr  
AIR OPERATIONS BRANCH DIRECTOR: Jeff Polack

### RESOURCES ASSIGNED THIS PERIOD

STRIKE TEAM/TASK FORCE/RESOURCE DESIGNATOR

Last Shift

LEADER

NUMBER PERSONS

DROP OFF POINT/TIME

PICK UP POINT/TIME

ENG4 Blaze Runner 18

E-1

8/11

Aaron Carlson

3

### CONTROL OPERATIONS:

**TASK:** Continue direct and indirect line construction from Middle Fork Payette River to 611G Raod and then on towards Road 611. Construct indirect line around Lightning Creek subdivision and plumb with hoselay. Prep Road 611.

**PURPOSE:** Keep the fire north and east of structures along indirect line and north of Road 611 and Lightning Creek community

**END STATE:** Completed control line from Middle Fork Payette River to Lightning Ridge trailhead. Complete indirection handline and install hoselay.

### SPECIAL INSTRUCTIONS:

Use Field Maps to collect suppression activities and values at risk

FUNCTION		FREQUENCY Rx	FREQUENCY Tx	CHAN	FUNCTION	FREQUENCY Rx	FREQUENC Y Tx	CHAN.
TACTICAL	See communication plan				A/G PRIMARY			
COMMAND								
COMMAND								

PREPARED BY (RESOURCE UNIT LEADER)

/s/ **Patty Bates**, RESL

APPROVED BY (PLANNING SECTION CHIEF)

/s/ **Mark Glos**, PSC2

DATE

8/9/24

TIME

2200

<b>DIVISION ASSIGNMENT LIST</b> ICS-204	1. BRANCH <b>II</b>	2. DIVISION/GROUP <b>M</b>
--	------------------------	-------------------------------

3. INCIDENT NAME <b>Middle Fork Complex</b>	4. OPERATIONAL PERIOD Date: August 10, 2024 Time: 0700 - 2100
--	---

OPERATIONS PERSONNEL					
----------------------	--	--	--	--	--

PLANNING OPS: Ashley Sites STRATEGIC OPS: Paul Diaz DIVISION SUPERVISOR: Dave Macclay-Schulte; Javier Kirker (T)	BRANCH DIRECTOR: Adam Carr AIR OPERATIONS BRANCH DIRECTOR: Jeff Polack
---	---

RESOURCES ASSIGNED THIS PERIOD					
--------------------------------	--	--	--	--	--

STRIKE TEAM/TASK FORCE/RESOURCE DESIGNATOR	Last Shift	LEADER	NUMBER PERSONS	DROP OFF POINT/TIME	PICK UP POINT/TIME
HC2 Steelhead	C-7	8/10	Jake Place	20	
ENG4 ID-FHA 441	E-92	8/9	Derrick Tinno	3	
ENG4 Griz One #4	E-20	8/12	John Kraft	3	
ENG4 Griz One #1	E-19	8/12	Chris Tabor	3	
ENG4 Blaze Runner	E-21	8/14	Jerry Fugat	3	
CHP2 Flying V Tree	E-9	8/19	Ayrik Fisher	3	
WTS2 Dust Buster	E-12	8/14	Paul Kurzeborn	1	
AMBO1 Fireline	E-5	8/12	Cassie Allen	2	
TFLD Vick Clark (T)				1	
SOFR Billy Britt	O-29	8/16		1	
TFLD Chris Larson	O-5	8/12			
EMTF Anthony Amoroso	O-97	8/15			

**CONTROL OPERATIONS:**

**TASK:** Provide and improve protections for structures and improvements in Wapiti Creek, Bear Creek, Camp Creek Summer Home areas, Sawtooth Lodge, and infrastructure in the Grandjean area. Conduct firing operations based on fire behavior.

**PURPOSE:** Minimize fire impacts to local infrastructure in the Grandjean area.

**END STATE:** Conduct burn operations to mitigate fire behavior and enhance the point protection to values at risk.

**SPECIAL INSTRUCTIONS:**

*Use Field Maps to collect suppression activities and values at risk*

FUNCTION	FREQUENCY Rx	FREQUENCY Tx	CHAN	FUNCTION	FREQUENCY Rx	FREQUENCY Y Tx	CHAN.
TACTICAL				A/G PRIMARY	166.6000	166.6000	
COMMAND	See comm plan						
COMMAND							

PREPARED BY (RESOURCE UNIT LEADER) <i>/s/ Patty Bates, RESL</i>	APPROVED BY (PLANNING SECTION CHIEF) <i>/s/ Mark Glos, PSC2</i>	DATE 8/9/24	TIME 2200
--	--	----------------	--------------

<b>DIVISION ASSIGNMENT LIST</b> ICS-204	1. BRANCH <b>II</b>	2. DIVISION/GROUP <b>V</b>
--	------------------------	-------------------------------

3. INCIDENT NAME <b>Middle Fork Complex</b>	4. OPERATIONAL PERIOD <b>Date: August 10, 2024</b> <b>Time: 0700 - 2100</b>
--	---

**OPERATIONS PERSONNEL**

<b>PLANNING OPS:</b> Ashley Sites <b>STRATEGIC OPS:</b> Paul Diaz <b>DIVISION SUPERVISOR:</b> Dan Helterline; Charlie Fisher (T)	<b>BRANCH DIRECTOR:</b> Adam Carr <b>AIR OPERATIONS BRANCH DIRECTOR:</b> Jeff Polack
--	---

<b>RESOURCES ASSIGNED THIS PERIOD</b>					
STRIKE TEAM/TASK FORCE/RESOURCE DESIGNATOR	Last Shift	LEADER	NUMBER PERSONS	DROP OFF POINT/TIME	PICK UP POINT/TIME
ENG4 Blazerunner	E-21				
ENG6 Access Fire	E-11	8/20	Shane Sexton	3	
				1	
				1	

**CONTROL OPERATIONS:**

**TASK:** Continue direct and indirect line construction from Middle Fork Payette River to 611G Raod and then on towards Road 611. Construct indirect line around Lightning Creek subdivision and plumb with hoselay. Prep Road 611.

**PURPOSE:** Keep the fire north and east of structures along indirect line and north of Road 611 and Lightning Creek community

**END STATE:** Completed control line from Middle Fork Payette River to Lightning Ridge trailhead. Complete indirection handline and install hoselay.

**SPECIAL INSTRUCTIONS:**

*\* Identified for IA*

*Use Field Maps to collect suppression activities and values at risk*

FUNCTION	FREQUENCY Rx	FREQUENCY Tx	CHA N	FUNCTION	FREQUENCY Rx	FREQUENC Y Tx	CHAN.
TACTICAL	R4 TAC 2	166.8875	164.1625	A/G PRIMARY	166.6000	166.6000	
COMMAND	BOF North Repeater	171.4500 (167.9)	166.8875 (167.9)				
COMMAND							

PREPARED BY (RESOURCE UNIT LEADER) <i>/s/ Patty Bates, RESL</i>	APPROVED BY (PLANNING SECTION CHIEF) <i>/s/ Mark Glos, PSC2</i>	DATE 8/9/24	TIME 2200
--	--	----------------	--------------

### AIR OPERATIONS SUMMARY ICS-220

Incident Name- **WAPITI; BULL TROUT MIDDLE FORK COMPLEX**  
 Sunrise 0637 Sunset 2052  
 General Remarks, Safety Notes, Hazards, Air Operations Special Equipment, etc.

\*All GPS is to be collected in DD° MM.MM'  
 \*Be cognizant of all overhead and environmental hazards while working with Aircraft  
 \*Clear drop area/line before initiating drop sequence

**!! BE AWARE OF THUNDERSTORM DEVELOPMENT, HIGH WINDS & DETERIORATING CONDITIONS !!**

Incident Frequencies	RX	Tone	TX	Tone	AM/FM
<b>FM-Air to Ground</b>					
Wapiti - A/G Primary	168.3750		168.3750		FM
Wapiti - A/G Secondary	172.4500		172.4500		FM
Middle Fork Complex - A/G Primary	166.6000		166.6000		FM
Middle Fork Complex - A/G Secondary	169.2000		169.2000		FM
Bull Trout - A/G Primary	167.0750		167.0750		FM
Middle Fork Complex -A/G	170.0250		170.0250		FM
Deck	163.1000		163.1000		FM
Air Guard	168.6250		168.6250	110.9	FM
State Comm(EMS)	155.2800		155.2800	156.7	FM
<b>AM- Air to Air</b>					
Wapiti - A/A TFR	120.1250	Linked HLB	120.1250	Linked HLB	AM
Wapiti - A/A Secondary	125.9750		125.9750		AM
Middle Fork - A/A TFR	126.8250		126.8250		AM
Middle Fork - A/A Secondary	133.0250		133.0250		AM
Middle Fork - A/A	123.6000		123.6000		AM

**HELICOPTERS**

FAA #	A#	TYPE	Make/Model	Helibase	Avail	Stop	Remarks
N312BH		Type 3	AS 350B3	GV HLB	800	2100	EU/Crew
N530NC		Type 2	Bell 212S	GV HLB	0800	2100	EU/Crew
N205LM		Type 2	Bell 205 A1++	GV HLB	800	2000	EU/Crew
Forest Aircraft on Lend							
N239CH		Type 1	Boeing/BV-234	McCall	0800	2100	Order through Dispatch/FAO
N2773H		Type 2	Bell 205 A1++	Stanley	800	2100	

**UAS**

Call Sign	Type	Make/Model	Base	Avail	Stop	Remarks

Time Prepared	Date Prepared	Prepared By
1500	8/9/24	Jeff Polack
<a href="https://notams.aim.faa.gov/notamSearch/nsapc">https://notams.aim.faa.gov/notamSearch/nsapc</a>	Operational Period - Date	Operational Period - Time
	08/10/24	0800-2000 Stanley Helibase
<b>Helibase Information</b>	<b>TFR Information</b>	<b>Medivac Helicopter Information</b>
Stanley Airport (2U7) N 44 12.31 W 114 56.03	15 NW Stanley , Idaho, 10 W Stanley, Idaho	All air Medivacs will be coordinated through ID-BOF Dispatch.
	Polygon: Altitude: Polygon: NOTAMS: Frequency	
Send all costs to stanleyhelibasecomplex@gmail.com	12500' MSL Bulldog Wapiti 4367 4/8949 120.1250 http://tfr.faa.gov/tfr2/list.html	Request Procedure for These Aircraft: Go thru ATGS or Ops/Branch
<b>Position</b>	<b>Name</b>	<b>EQUIPMENT/SUPPLIES</b>
AOBD	Jeff Polack	
AOBD		
ASGS	Steve Croy	
ASGS(t)		
ATGS		
HEBM (t)	Jason Van Dyk	
HEBM	Gunnar Cahill	
HEBM(t)	Aaron Reynolds	
UAS		Dispatch information
		ID-BOF Dispatch 208-384-3400
		Aircraft Desk
		idbdc@firenet.gov

FAA #	A#	TYPE	Make/Model	Helibase	Avail	Stop	Remarks
N402PJ		Type 3	Bell 407	Stanley	0800	2100	
<b>HELICOPTERS</b>							
<b>FIXED WING</b>							
FAA #	A#	Call Sign	Make/Model	Base	Avail	Stop	Remarks
							Order thru Dispatch/AOBD

Exhibit 6.2 - Flight Permitted in Winds Less Than/Maximum Gusc Spread in Knots, by Helicopter Type.

Distance Above Ground Level (AGL)	Type 1 (Heavy) Helicopter	Type 2 (Medium) Helicopter	Type 3 (Light) Helicopter
More than 500' AGL	50/NA	50/NA	50/NA
Less than 500' AGL	40/15	40/15	30/15

Remember: winds where the aircraft are flying are likely higher than eye-level

**POTENTIAL MISSIONS:**

- Recons
- Sling Loads
- Bucket Work
- Crew Shuttles



# Safety Message

**Instructions and Assignments Not Clear** – With multiple fires managed under one team, ask yourself if you really understand the mission for the day. Honestly ask yourself:

- What is the Purpose and End State? Are you just assuming you are doing the same thing as yesterday, or has something changed?
- Are you experienced with the operations and hazards? Are you concerned about asking for clarification and admitting you really don't understand because the incident is winding down -- or are you avoiding asking for another reason?
- Did your supervisor use unfamiliar terms, jargon, slang or acronyms?

**ASK IF YOU DON'T KNOW!!** Maintain open and honest communications and be open to training opportunities.

**Uninformed on Strategy, Tactics and Hazards** – A good briefing is essential to safe and successful missions. Were the operations and hazards adequately covered? Do you know how to contact your supervisor if something unexpected happens, or if there is an accident or injury? What are we trying to accomplish by the end of the shift?

**Review the Briefing Checklist in the IRPG.** Was any critical information not communicated?



**Team Safety Officers: Matt Nelson, Mike Cachero,  
Jonathan White (T)**

**Safety is your Responsibility!**

**Northern Rockies Complex Incident Management Team**

# INCIDENT RADIO COMMUNICATIONS PLAN (ICS 205)

<b>1. Incident Name:</b> Bulldog	<b>2. Date/Time Prepared:</b> Date: 08/08/2024 2100 Time:	<b>3. Operational Period:</b> Date From: 08/09/2024 Date To: 08/09/2024 Time From: 0700 Time To: 2000
-------------------------------------	---	---

4. Basic Radio Channel Use:										
Zone Grp.	Ch #	Function	Channel Name/Trunked Radio System Talkgroup	Assignment	RX Freq N or W	RX Tone/NAC	TX Freq N or W	TX Tone/NAC	Mode (A, D, or M)	Remarks
11	2	COMMAND	BOF NORTH REPEAT	ALL DIVS	171.4500		164.1625	167.9	A	PACKER JOHN (Tone 7)
11	13	TACTICAL	BOF TAC1	ALL DIVS	168.7500		168.7500		A	SECONDARY TAC
11	12	TACTICAL	FS SOA DIRECT	ALL DIVS	168.7750		168.7750		A	ALTERNATIVE TAC
11	14	TACTICAL	R4 TAC 2	ALL DIVS	166.8875		166.8875		A	PRIMARY TAC
11		AIR TO GROUND	A/G PRIM	ALL DIVS	166.6000		166.6000		A	A/G PRIMARY
11		AIR TO GROUND	A/G SEC	ALL DIVS	169.2000		169.2000		A	A/G SECONDARY
11	16	MEDICAL	EMS F2	ALL DIVS	155.2800		155.2800	156.7	A	FOR AIR AMBULANCE (TONE 6)
11										
11										
11										
11										
11										
11										
11										
11										

**5. Special Instructions:**

All divisions to use R4 TAC 2 as primary tac.

---

**6. Prepared by (PSC)** \_\_\_\_\_ **Name:** N. BECHARAS **Date/Time:** 08/09/2024 2100 **Signature:** \_\_\_\_\_

ICS 205 | IAP Page



# INCIDENT RADIO COMMUNICATIONS PLAN (ICS 205)

Controlled Unclassified Information //Basic

1. Incident Name:		2. Date/Time Prepared:		3. Operational Period:		DATE/TIME TO:				
<b>BRANCH II (WAPITI BULLTROUT)</b>		Date: <b>08/09/24</b> Time: <b>2030</b>		DATE/TIME FROM: <b>08/10/24 0700 HRS</b>		<b>08/10/24 2100 HRS</b>				
4. Basic Radio Channel Use:										
Zone Group #	Ch #	Function	Channel Name/Trunked Radio System Talk Group	Assignment	RX Freq	RX Tone/NAC	TX Freq	TX Tone/NAC	Mode (A.O. 0-<M)	Remarks
	1	TACTICAL	TAC 1	DIV S TAC	168.0500	103.5	168.0500	103.5	A	BULLTROUT TACTICAL-DIVISION SIERRA
	2	TACTICAL	TAC 2	DIV S TAC	168.2000	103.5	168.2000	103.5	A	BULLTROUT TACTICAL-DIVISION SIERRA
	3	TACTICAL	TAC 3	DIV V TAC	168.6000	103.5	168.6000	103.5	A	WAPITI TACTICAL-DIVISION VICTOR
	4	TACTICAL	TAC 4	DIV V TAC	166.7250	103.5	166.7250	103.5	A	WAPITI TACTICAL-DIVISION VICTOR
	5	TACTICAL	TAC 5	DIV SNAG	166.7750	103.5	166.7750	103.5	A	SNAG TACTICAL-DIVISION SNAG
	6	TACTICAL	TAC 6	IA AND NIGHT SHIFT	168.2500	103.5	168.2500	103.5	A	INITIAL ATTACK AND NIGHT SHIFT TACTICAL
	7									
	8	COMMAND 8	CMD 8	ALL DIVS	171.8500	103.5	162.8000	103.5	A	LOCATED ON ZUMWALT
	9	COMMAND 9	CMD 9	ALL DIVS	168.0125	103.5	164.5750	103.5	A	LOCATED ON COPPER (STANLEY)
	10									
	11									
	12									
	13	AIR TO GROUND	WP A/G P	WAPITI AIR TO GROUND	168.3750	000.0	168.3750	000.0	A	WAPITI AIR TO GROUND PRIMARY
	14	AIR TO GROUND	WP A/G S	WAPITI AIR TO GROUND	172.4500	000.0	172.4500	000.0	A	WAPITI AIR TO GROUND SECONDARY
	15	AIR TO GROUND	BT A/G P	BULLTROUT AIR TO GROUND	167.0750	000.0	167.0750	000.0	A	BULLTROUT AIR TO GROUND PRIMARY
	16	AIR GUARD	AIR GRD	ALL DIVS	168.6250	NONE	168.6250	110.9	A	EMERGENCY USE ON LY
5. Special Instructions:								Signature: <i>Troy McMillan</i>		Date/Time: 08/08/24 1845 HRS
6. Prepared By		(Communications Unit Leader)		Name: Troy McMillan		IAP Page				
COMMUNICATIONS UNIT PHONE NUMBER IS 208-891-8804										

## MIDDLE FORK COMPLEX INCIDENT CHECK-IN PROCESS



Please use the following steps to check-in to the Middle Fork Complex:

1. Fill out and submit the online check-in form. Use your resource order to help you fill out the form
2. Email the following documents to 2024.middleforkcomplex.finance@firenet.gov:
  - Manifest (crews and engines)
  - Resource order (crews, equipment, and overhead)
  - Red cards (crews, equipment, and overhead)
  - Casual hire form (A.D. resources)
  - Contractor agreement (pgs. 1-3)
3. If you need assistance please call. 541-410-5716

<https://forms.office.com/g/HDb8gvBgFw>

## MIDDLE FORK COMPLEX DEMOBILIZATION CHECK-OUT PROCESS

The MIDDLE FORK COMPLEX is using the following virtual checkout process for demobilization. **Please do not leave the incident until the follow steps have been completed!**

1. **72 hours prior** to demobilization date, please ensure that:
  - Your incident supervisor has submitted a Demob Request, in coordination with the Demob unit.
  - If you need a flight arranged for you, please submit a [Flight Request Form](#).
2. **On your demob date**, please check out with the following units. Each unit will release you through an electronic process that is monitored, rather than a paper ICS-221.
  - Supply Unit – Return gear and supplies.
  - Ground Support – Return pool NERV rentals, receive inspections, etc.
  - Communications Unit – Return Radios and other communications equipment.
  - Time/Finance – Ensure that all CTRs and/or shift tickets have been submitted and **you have received your final, signed OF-288 Time Report or OF-286 invoice.**
3. **Once you have completed the above steps**, please fill out the Demob Release Form. **THIS IS THE LAST STEP OF THE DEMOB PROCESS. PLEASE DO NOT FILL THIS FORM OUT UNTIL ALL PRIOR STEPS ARE COMPLETE!**



[Flight Request Form](#)



[Demob Release Form](#)

Demob Unit Leader: Phone 541-410-5716  
2024.middleforkcomplex.demob@firenet.gov

# MEDICAL PLAN (ICS 206 WF)

Controlled Unclassified Information//Basic

## Medical Incident Report

**FOR A NON-EMERGENCY INCIDENT, WORK THROUGH CHAIN OF COMMAND TO REPORT AND TRANSPORT INJURED PERSONNEL AS NECESSARY.**

**FOR A MEDICAL EMERGENCY: IDENTIFY ON SCENE INCIDENT COMMANDER BY NAME AND POSITION AND ANNOUNCE "MEDICAL EMERGENCY" TO INITIATE RESPONSE FROM IMT COMMUNICATIONS/DISPATCH.**

Use the following items to communicate situation to communications/dispatch.

1. CONTACT COMMUNICATIONS / DISPATCH (Verify correct frequency prior to starting report)  
Ex: "Communications, Div. Alpha. Stand-by for Emergency Traffic."
2. INCIDENT STATUS: Provide incident summary (including number of patients) and command structure.  
Ex: "Communications, I have a Red priority patient, unconscious, struck by a falling tree. Requesting air ambulance to Forest Road 1 at (Lat./Long.) This will be the Trout Meadow Medical, IC is TFLD Jones. EMT Smith is providing medical care."

Severity of Emergency / Transport Priority	<input type="checkbox"/> RED / PRIORITY 1 Life or limb threatening injury or illness. Evacuation need is IMMEDIATE Ex: Unconscious, difficulty breathing, bleeding severely, 2° – 3° burns more than 4 palm sizes, heat stroke, disoriented. <input type="checkbox"/> YELLOW / PRIORITY 2 Serious Injury or illness. Evacuation may be DELAYED if necessary. Ex: Significant trauma, unable to walk, 2° – 3° burns not more than 1-3 palm sizes. <input type="checkbox"/> GREEN / PRIORITY 3 Minor Injury or illness. Non-Emergency transport Ex: Sprains, strains, minor heat-related illness.	
Nature of Injury or Illness & Mechanism of Injury		Brief Summary of Injury or Illness (Ex: Unconscious, Struck by Falling Tree)
Transport Request		Air Ambulance / Short Haul/Hoist Ground Ambulance / Other
Patient Location		Descriptive Location & Lat. / Long. (WGS84)
Incident Name		Geographic Name + "Medical" (Ex: Trout Meadow Medical)
On-Scene Incident Commander		Name of on-scene IC of Incident within an Incident (Ex: TFLD Jones)
Patient Care		Name of Care Provider (Ex: EMT Smith)

3. INITIAL PATIENT ASSESSMENT: Complete this section for each patient as applicable (start with the most severe patient)

Patient Assessment: See IRPG page 106

Treatment:

4. TRANSPORT PLAN:

Evacuation Location (if different): (Descriptive Location (drop point, intersection, etc.) or Lat. / Long.) Patient's ETA to Evacuation Location:

Helispot / Extraction Site Size and Hazards:

5. ADDITIONAL RESOURCES / EQUIPMENT NEEDS:

Example: Paramedic/EMT, Crews, Immobilization Devices, AED, Oxygen, Trauma Bag, IV/Fluid(s), Splints, Rope rescue, Wheeled litter, HAZMAT, Extrication

6. COMMUNICATIONS: Identify State Air/Ground EMS Frequencies and Hospital Contacts as applicable

Function	Channel Name/Number	Receive (RX)	Tone/NAC *	Transmit (TX)	Tone/NAC *
COMMAND					
AIR-TO-GRND					
TACTICAL					

7. CONTINGENCY: Considerations: If primary options fail, what actions can be implemented in conjunction with primary evacuation method? Be thinking ahead.

8. ADDITIONAL INFORMATION: Updates/Changes, etc.

**REMEMBER:** Confirm ETA's of resources ordered. Act according to your level of training. Be Alert. Keep Calm. Think Clearly. Act Decisively.

# MEDICAL PLAN (ICS 206 WF)

Controlled Unclassified Information//Basic

<b>1. Incident/Project Name</b>		<b>2. Operational Period</b>						
Middle Fork Complex		08/10/24 0700-2100						
<b>3. Ambulance Services</b>								
Name	Complete Address	Phone & EMS Frequency	Advanced Life Support (ALS) Yes No					
			<input type="checkbox"/> Yes <input type="checkbox"/> No					
			<input type="checkbox"/> Yes <input type="checkbox"/> No					
<b>4. Air Ambulance Services</b>								
Name	Contact	Type of Aircraft & Capability						
35 HX (Teton)		Cascade, ID Short Haul, Hospital Transport, Day Only						
3SH (Payette)		McCall, ID Short Haul, Hospital Transport, Day Only						
Life Flight Inc.		ALS, Night Capable						
Air St. Lukes		ALS, Night Capable, Fixed Wing						
<b>5. Hospitals</b>								
Name Complete Address	GPS Datum – WGS 84 Coordinate Standard Degrees Decimal Minutes DD° MM.MMM' N - Lat DD° MM.MMM' W - Long		Travel Time Air Gnd		Phone	Helipad Yes No		Level of Care
	Lat:	43° 36.79'	45	3.5		Direct Line	<input checked="" type="checkbox"/>	
St. Alphonsus Hospital 1055 N Curtis Rd Boise, ID 83706	Long:	-116° 15.29'	MIN	HRS	208-367-2121	<input checked="" type="checkbox"/>	<input type="checkbox"/>	Critical Care Hospital
St. Luke's Medical Center 190 E. Bannock St. Boise, ID 83712	VHF:	TAN, Boise Dispatch	45	3.5		<input checked="" type="checkbox"/>	<input type="checkbox"/>	
EIRMC Burn Center 3100 Channing Way Idaho Falls, ID 83404	Lat:	43° 29.4'	1.5	5	Direct Line	<input checked="" type="checkbox"/>	<input type="checkbox"/>	
	Long:	-112° 1.8'	HRS	HRS	208-529-7986	<input checked="" type="checkbox"/>	<input type="checkbox"/>	
	VHF:					<input type="checkbox"/>	<input type="checkbox"/>	
<b>6. Division   Branch   Group</b>				<b>Area Location Capability</b>				
<b>Branch 1</b>  <b>ICP</b>  <b>Garden Valley Center</b> 1219 Banks Lowman Rd  Garden Valley, ID 83622				<b>EMS Responders &amp; Capability:</b>		Rosemary Myers, AEMT/MEDL BLS Andrea Colson, EMTF/MEDL, Steven Kendley, EMTF/MEDLt		
				<b>Equipment Available on Scene:</b>		IV, AED, O2		
				<b>Medical Emergency Channel:</b>				
				<b>ETA for Ambulance to Scene:</b>				
				<b>Air:</b>		45 MIN		
				<b>Ground:</b>		3.5 HRS		
				<b>Approved Helispot:</b>				
				<b>Lat:</b>				
				<b>Long:</b>				
				<b>Lat:</b>				
<b>Long:</b>								
<b>Point of Contact:</b>								
<b>7. Name &amp; Location</b>				<b>Remote Camp Location(s)</b>				
				<b>EMS Responders &amp; Capability:</b>		Ray Mines EMTF, BLS Meds,		

# MEDICAL PLAN (ICS 206 WF)

Controlled Unclassified Information//Basic

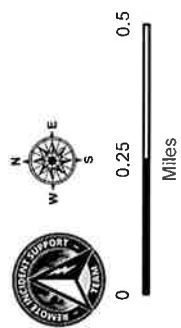
<b>Branch 2</b>  <b>FOB</b> Warm Springs	<b>Equipment Available on Scene:</b>	AED	
	<b>Medical Emergency Channel:</b>		
	<b>ETA for Ambulance to Scene:</b>		
	<b>Air:</b>		
	<b>Ground:</b>		
	<b>Approved Helispot:</b>		
	<b>Lat:</b>		
	<b>Long:</b>		
	<b>Point of Contact:</b>		
	<b>Long:</b>		
<b>9. Date/Time</b>			
<b>8. Prepared By (Medical Unit Leader)</b>		<b>10. Reviewed By (Safety Officer)</b>	
/S/ Rosemary Myers		/S/ Jonathan White	
1841		1900	

# Incident Action Plan

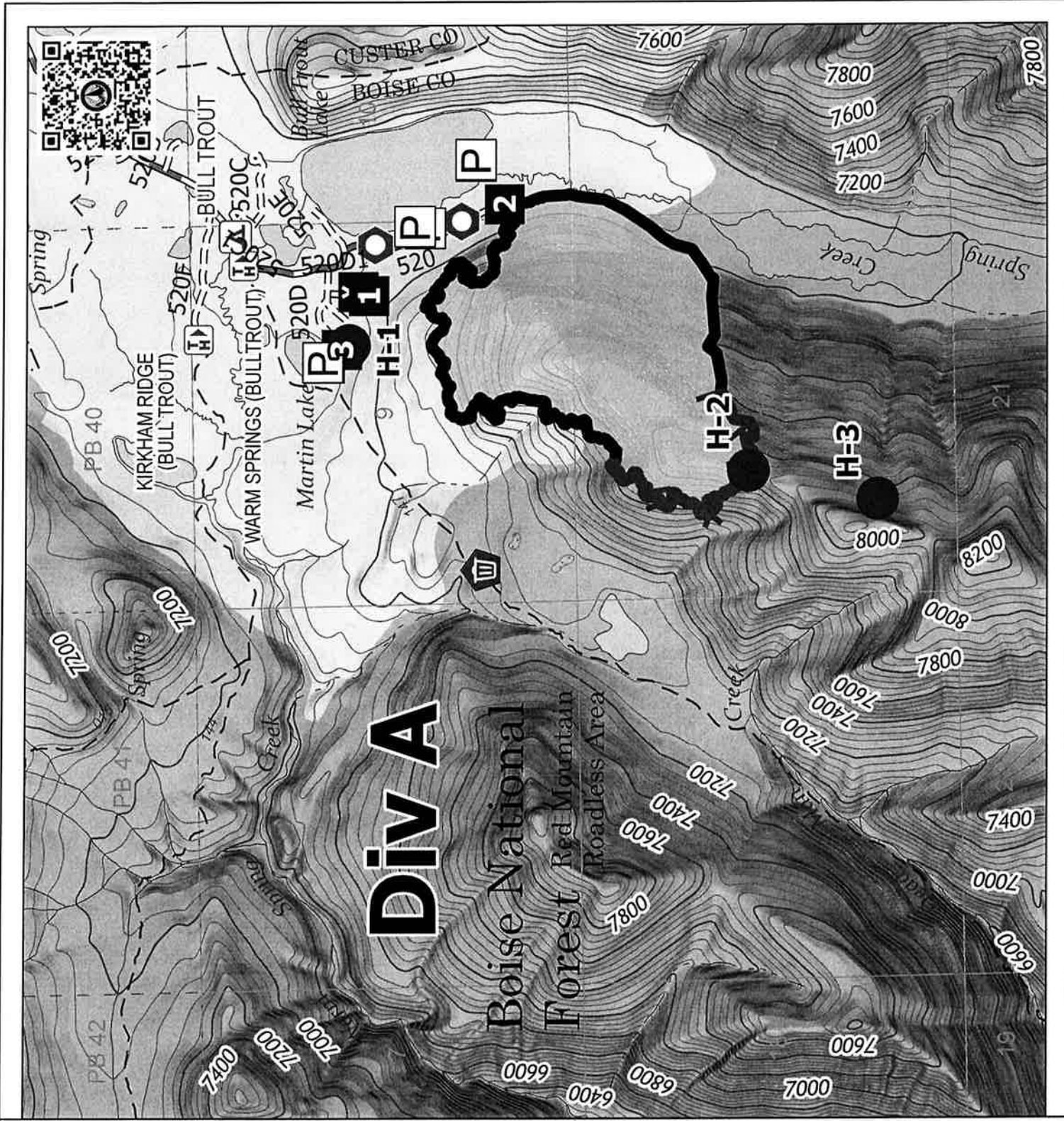
## Plan

Bulltrout  
 ID-BOF000699  
 08/10/2024 Day

- Helispot
- Drop Point
- ⊠ Camp
- Landmark
- ⊙ Clean Up Area
- Contained
- Uncontained
- └┘ Wildlife Daily Fire Perimeter
- ▬ Road, dirt/gravel
- ▬ Road, high clearance
- ▬ USFS Roadless Areas
- ▬ Forest Service Land



1:22,544 | RIST 2024 | 8/9/2024 22:18  
 Source Statement  
 North American 1983 Datum, Lat/Long Grid





# Incident Action Plan

Middle Fork Complex  
 ID-BOF00936  
 08/10/2024 Day

	Helispot
	Sling Site
	Division Break
	Drop Point
	Closure
	Camp
	Fire Origin
	Value at Risk
	Gate
	Draft Site
	Uncontained
	Wildfire Daily Fire Perimeter
	Secondary Highway
	Road
	Road, Paved
	Road, Dirt/Gravel
	Road, high clearance
	Road, Closed
	Road, Paved
	Road, Dirt/Gravel
	Road, high clearance
	FS Closed Road
	USFS Roadless Areas
	Forest Service Land
	Bureau of Land Management Lands
	State Lands



1:137,329 | RIST 2024 | 6/9/2024 22:18  
 Source Statement  
 North American 1983 Datum, Lat/Long Grid

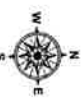


# Incident Action Plan

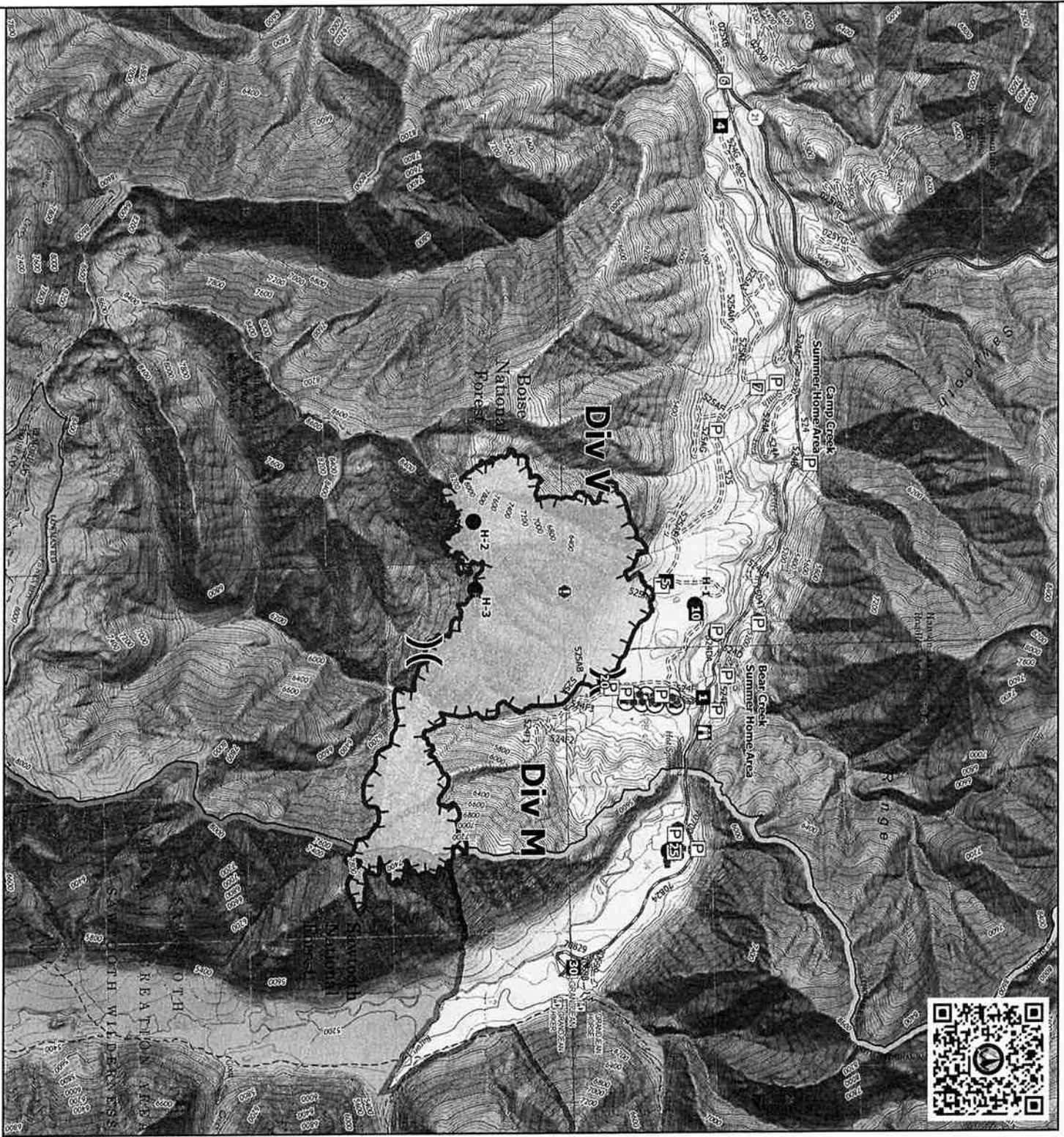
## Mapiti

ID-BOF000699  
08/10/2024 Day

- Structure
- Helispot
- Division Break
- Drop Point
- Lookout
- Value at Risk
- Other
- Bridge
- Stream Crossing
- Repeater
- Draft Site
- Hydrant
- Uncontained
- Wildfire Daily Fire Perimeter
- Secondary Highway
- Road, Dirt/Gravel
- Road, high clearance
- FS Closed Road
- USFS Roadless Areas
- FS Wilderness Boundary
- Other Designated Boundary
- Forest Service Land



1:62,160 | RIST 2024 | 8/9/2024 22:19  
Source Statement:  
North American 1983 Datum, Lat/Long Grid







# Northern Rockies Chainsaw Parts Order Form

Please see the back page for part order numbers and items requiring an approved Property Loss and Damage form.

Name:	Gen. Msg #:		
Resource #:	Request Date:		
Contact #:	Need by Date/Time:		
TO BE FILLED BY: (circle one):	<input type="checkbox"/> Buying Team	<input type="checkbox"/> Home Unit	<input type="checkbox"/> Cache

## Chainsaw Information

Make (circle one or fill in):	<input type="checkbox"/> Stihl	<input type="checkbox"/> Husqvarna	<input type="checkbox"/> Other:
Model:			
Serial #			
Bar Length (circle one):	<input type="checkbox"/> 20"	<input type="checkbox"/> 24"	<input type="checkbox"/> 28"
	<input type="checkbox"/> 30"	<input type="checkbox"/> 32"	<input type="checkbox"/> 36"
	<input type="checkbox"/> Other:		

## Request:

Part Name and Number	Quantity	Part Name and Number	Quantity

## For Sprocket & Chain Orders (circle one or fill in):

# of Drivers:			
Pitch (*):	<input type="checkbox"/> 3/8"	<input type="checkbox"/> .325"	<input type="checkbox"/> Other:
Gauge:	<input type="checkbox"/> .50	<input type="checkbox"/> .063	<input type="checkbox"/> Other:
Tooth Layout:	<input type="checkbox"/> Full	<input type="checkbox"/> Semi-Skip	<input type="checkbox"/> Full Skip
Tooth Cut:	<input type="checkbox"/> Chisel	<input type="checkbox"/> Semi-Chisel	<input type="checkbox"/> Other:
# of Sprocket Teeth:			

- Concurrence (Line Supervisor i.e. DIVS): \_\_\_\_\_
- Supply Unit Leader has checked that the items ordered do not need an approved Property Loss & Damage Form, or that the approval is attached. (Supply Unit Leader checks box and initials here: \_\_\_\_\_).

First source of supply is Cache, shaded blocks indicate items available thru Northern Rockies Cache. Items requiring an approved Property Loss and Damage form are in a separate list at the bottom.												
PART	034/341	360/MS360	MS361	MS362	038/381	044/MS440	MS441	460/MS461	MS462	0640/650	MS660	MS880
	Bosch WSREF NGK BPMR7A Champion RC16Y	Bosch WSREF NGK BPMR7A Champion RC16Y	Bosch WSREF NGK BPMR7A Champion RC16Y	Bosch WSREF NGK BPMR7A Champion RC16Y	Bosch WSREF NGK BPMR7A Champion RC16Y	Bosch WSREF NGK BPMR7A Champion RC16Y	Bosch WSREF NGK BPMR7A Champion RC16Y	Bosch WSREF NGK BPMR7A Champion RC16Y	Bosch WSREF NGK BPMR7A Champion RC16Y	Bosch WSREF NGK BPMR7A Champion RC16Y	Bosch WSREF NGK BPMR7A Champion RC16Y	Bosch WSREF NGK BPMR7A Champion RC16Y
Spark Plug (NFES# 000344)	9512-933-2380 0000-958-1022 9460-624-0801	9512-933-2380 0000-958-1022 9460-624-0801	9512-933-2380 0000-958-1032 9460-624-0801	9512-933-2380 0000-958-1032 9460-624-0801	9512-933-3150 0000-958-1231 9460-624-1001	9512-933-2380 0000-958-1032 9460-624-0801	9512-933-2380 0000-958-1032 9460-624-0801	9512-933-2380 0000-958-1032 9460-624-0801	9512-933-2382 0000-958-1032 9460-624-0801	9512-933-2382 0000-958-1032 9460-624-0801	9512-933-2382 0000-958-1032 9460-624-0801	9512-933-3170 0000-958-1236 9460-624-1001
Needle Case Bearing (NFES# 066565)	0000-958-1022	0000-958-1022	0000-958-1032	0000-958-1032	0000-958-1231	0000-958-1032	0000-958-1032	0000-958-1032	0000-958-1032	0000-958-1032	0000-958-1032	0000-958-1236
Retaining Washer for Rim Sprocket	9460-624-0801	9460-624-0801	9460-624-0801	9460-624-0801	9460-624-1001	9460-624-0801	9460-624-0801	9460-624-0801	9460-624-0801	9460-624-0801	9460-624-0801	9460-624-1001
E Clip (NFES# 066517)	0000-350-3504	0000-350-3504	0000-350-3504	0000-350-3504	0000-350-3504	0000-350-3504	0000-350-3504	0000-350-3504	0000-350-3504	0000-350-3504	0000-350-3504	0000-350-3504
Fuel Filter	1125-120-1612	1125-120-1612	1125-120-1600	1140-140-4401	1119-120-1611	0000-140-4402	1140-140-4402	0000-120-1654	1142-140-4402	0000-140-4402	0000-140-4402	0000-140-4402
Air Filter - HD (NFES# 066756)	1125-120-1626	1125-120-1626	N/A	N/A	1119-120-1500	0000-141-0300	0000-141-0300	0000-141-0300	N/A	0000-141-0300	0000-141-0300	0000-141-0300
Pre Filter - OEM	0000-955-0801	0000-955-0801	0000-955-0801	0000-955-0801	0000-955-0801	0000-955-0801	0000-955-0801	0000-955-0801	0000-955-0801	0000-955-0801	0000-955-0801	0000-955-0903
Bar Nut (NFES# 06661)	1122-664-1000	1122-664-1000	1122-664-1000	1122-664-1000	1119-664-1000	1128-664-1001	1138-664-1000	1128-664-1001	1128-664-1001	1128-664-1001	1128-664-1001	1124-664-1001
Inner Slide Plate												
STIHL RAPID - Super (RS)												
Chain 3/8" PITCH - .050" GA - DR	3623-005-0072	3623-005-0072	3623-005-0072	3623-005-0072	3623-005-0072	3623-005-0072	3623-005-0072	3623-005-0072	3623-005-0072	3623-005-0072	3623-005-0072	3623-005-0072
20" - 72 DR	3623-005-0084	3623-005-0084	3623-005-0084	3623-005-0084	3623-005-0084	3623-005-0084	3623-005-0084	3623-005-0084	3623-005-0084	3623-005-0084	3623-005-0084	3623-005-0084
25" - 84 DR (NFES# 006500)	3623-005-0091	3623-005-0091	3623-005-0091	3623-005-0091	3623-005-0091	3623-005-0091	3623-005-0091	3623-005-0091	3623-005-0091	3623-005-0091	3623-005-0091	3623-005-0091
28" - 91 DR	N/A	N/A	N/A	N/A	N/A	N/A	N/A	N/A	N/A	N/A	N/A	N/A
32" - 105 DR												
STIHL RAPID - Super - Full Skip (RSF)												
Chain 3/8" PITCH - .050" GA - DR	3676-005-0072	3676-005-0072	3676-005-0072	3676-005-0072	3676-005-0072	3676-005-0072	3676-005-0072	3676-005-0072	3676-005-0072	3676-005-0072	3676-005-0072	3676-005-0072
20" - 72 DR	3676-005-0084	3676-005-0084	3676-005-0084	3676-005-0084	3676-005-0084	3676-005-0084	3676-005-0084	3676-005-0084	3676-005-0084	3676-005-0084	3676-005-0084	3676-005-0084
25" - 84 DR	3676-005-0091	3676-005-0091	3676-005-0091	3676-005-0091	3676-005-0091	3676-005-0091	3676-005-0091	3676-005-0091	3676-005-0091	3676-005-0091	3676-005-0091	3676-005-0091
28" - 91 DR	N/A	N/A	N/A	N/A	N/A	N/A	N/A	N/A	N/A	N/A	N/A	N/A
32" - 105 DR												
Bar oil: Quantity - Gallon	NFES # 1880	NFES # 1880	NFES # 1869	NFES # 1869								
Bar oil: Quantity - Quart	NFES # 1869	NFES # 1869	NFES # 1869	NFES # 1869								
2 Cycle Oil: Quantity - Quart	NFES # 0341	NFES # 0341	NFES # 0341	NFES # 0341								

The following parts require an approved Property Loss & Damage form prior to ordering:

Guide Bars - 3/8" - .050" GA (STIHL ROLLOMATIC - ES)												
20"	3003-000-8822	3003-000-8822	3003-000-8822	3003-000-8822	3003-000-8822	3003-000-8822	3003-000-8822	3003-000-8822	3003-000-8822	3003-000-8822	3003-000-8822	3003-000-8822
25" (NFES# 066584)	N/A	3003-000-8830	3003-000-8830	3003-000-8830	3003-000-8830	3003-000-8830	3003-000-8830	3003-000-8830	3003-000-8830	3003-000-8830	3003-000-8830	3003-000-8830
28"	N/A	N/A	N/A	N/A	N/A	N/A	N/A	N/A	N/A	N/A	N/A	N/A
32"	N/A	N/A	N/A	N/A	N/A	N/A	N/A	N/A	N/A	N/A	N/A	N/A
Rim Sprocket Kit 3/8 - 7T	1125-007-1040	1125-007-1223	1125-007-1002	1125-007-1002	1119-007-1003	1128-007-1000	1128-007-1000	1128-007-1017	1128-007-1000	1122-007-1000	1122-007-1000	N/A
Clutch Drum	Order Sprocket Kit	Order Sprocket Kit	Order Sprocket Kit	Order Sprocket Kit	Order Sprocket Kit	Order Sprocket Kit	Order Sprocket Kit	Order Sprocket Kit	Order Sprocket Kit	Order Sprocket Kit	Order Sprocket Kit	Order Sprocket Kit
Rim Sprocket 3/8 - 8T	0000-642-1231	0000-642-1023	0000-642-1223	0000-642-1223	0000-642-1223	0000-642-1223	0000-642-1223	0000-642-1223	0000-642-1223	0000-642-1223	0000-642-1223	N/A
Rim Sprocket 3/8 7T (NFES# 066652)												
Rim sprocket Kit 3/8 - 8T	N/A	N/A	N/A	N/A	N/A	N/A	N/A	N/A	N/A	N/A	N/A	N/A
Clutch Drum	Order Sprocket Kit	Order Sprocket Kit	Order Sprocket Kit	Order Sprocket Kit	Order Sprocket Kit	Order Sprocket Kit	Order Sprocket Kit	Order Sprocket Kit	Order Sprocket Kit	Order Sprocket Kit	Order Sprocket Kit	Order Sprocket Kit
Rim Sprocket 3/8 - 8T	N/A	0000-642-1216	0000-642-1216	0000-642-1216	0000-642-1216	0000-642-1216	0000-642-1216	0000-642-1216	0000-642-1216	0000-642-1216	0000-642-1216	0000-642-1216
Clutch	1127-160-2050	1125-160-2005	1128-160-2004	1138-160-2010	1119-160-2000	1128-160-2001	1138-160-2010	1128-160-2004	1142-160-2000	1122-160-2005	1122-160-2005	1124-160-2005
Chain Adjuster Kit	1125-007-1036	1125-007-1021	1125-007-1021	1125-007-1021	1118-664-1500	1125-007-1021	1125-007-1021	1125-007-1021	1125-007-1021	1125-007-1021	1125-007-1021	1124-007-1008
Bump Strip	1121-648-6610	1121-648-6610	1121-648-6610	1121-648-6610	1121-648-6610	1121-648-6610	1121-648-6610	1121-648-6610	1121-648-6610	1121-648-6610	1121-648-6610	1121-648-6610
Starter Rope W/handle	1128-190-3400	1128-190-3400	1128-190-3400	1128-190-3400	1128-190-3400	1128-190-3400	1128-190-3400	1128-190-3400	1128-190-3400	1128-190-3400	1128-190-3400	1128-190-3400
Worm Gear (Oilier)	1125-640-7110	1125-640-7110	1128-640-7112	1128-640-7112	1119-642-1501	1128-640-7112	1128-640-7112	1128-640-7112	1128-640-7112	1122-640-7105	1122-640-7105	1124-640-7512
Mainfold Boot	1125-141-2200	1125-141-2200	1135-141-2200	1140-140-2503	1119-140-2500	1128-141-2204	1138-140-2508	1128-141-2204	1142-141-2200	1122-141-2200	1122-141-2200	1124-141-2202

## **Finance Message**

Welcome to the Middle Fork Complex, Wapiti, and Bulltrout Fires! Come on by the Garden Valley Work Center or reach out via email if you need help.

Please send your Finance goodies (CTRs, Shift Tickets, agreements) to:  
[2024.middleforkcomplex.finance@firenet.gov](mailto:2024.middleforkcomplex.finance@firenet.gov)

Be sure you enter the WHOLE EMAIL ADDRESS, or your stuff will go to a fire in Oregon!

**For Federal and some State Resource: Today is the last day of the pay period. Don't forget to do your times!**

**If you were originally ordered on the Bulldog or Nellie/Anderson fires, Dispatch is going to re-assign you to the Middle Fork Complex and you will get a new O- or E-number. Please charge all of your time and travel to the new Middle Fork Complex incident number and charge code.**

Name & Contact # for Person Placing Order:

ORDER # \_\_\_\_\_

### Line Order

Date & Time Order Was Placed		Location and Time for Delivery (Div/LZ/DP/Lat Long)			Mode of Delivery (Ex: Driven/Helo/DIVS to pickup)		
<input type="text"/>		<input type="text"/>			<input type="text"/>		
<input type="text"/>		<input type="text"/>			<input type="text"/>		
#	Item	Quantity	#	Item	Quantity		
1	Meals Breakfast		25	Drip Torch Mix 5gal Mix= 3 1/2gal Diesel : 1 gal Gas			
2	Meals Lunch		26	Line Spike Hygiene Kit			
3	Meals Dinner		27	Backpack Pump			
4	Meals MRE's/case		28	Folding Tank - Size: <input type="text"/>			
5	Water 5 Gal Cubees		29	Pumpkin - Size: <input type="text"/>			
6	Gatorade Case		30	Hose 1 1/2"			
7	Batteries AA Flat		31	Hose 1"			
8	Batteries Specify Type: <input type="text"/>		32	Hose 3/4"			
9	Flagging Rolls		33	Reducer 1 1/2" X 1"			
10	Tarps/Plastic		34	Reducer 1" X 3/4"			
11	Parachute Cord		35	Gated Wye 1 1/2"			
12	Garbage Bags Box		36	Gated Wye 1"			
13	20 Person First Aid Kit		37	Gated Wye 3/4"			
14	Fuel (raw) Diesel 5 Gals		38	Shut Off Valve 3/4"			
15	Fuel (raw) Unleaded 5 Gals		39	In-Line Tee 1 1/2" X 1"			
16	Bar Oil 6 Pack		40	Nozzle 1 1/2" KK			
17	2-cycle oil/pumps Quarts		41	Nozzle 1" Forestry			
18	2-cycle oil/saws		42	Nozzle 3/4" Garden			
19	Tool Shovel		43	Chainsaw Kit			
20	Tool Pulaski		44	Mark 3 Pump w/ Kit (No Fuel) Control# _____			
21	Tool Combi		45	Lightweight Pump w/ Kit (No Fuel) Control# _____			
22	Tool Specify Type: <input type="text"/>						
23	Fusee Case		46	Sprinkler Kit			
24	Drip Torch		47	MISC			
Order Received in Supply by (name):				Time:			
Order Received in Transportation by (name):				Time:			
Order Received in Helibase by (name):				Time:			
Order Shipped to Line Unit by (name):				Time:			

Clear / Reset

Print

Save &/or Submit



# MEDICAL PLAN (ICS 206 WF)

Controlled Unclassified Information//Basic

## Medical Incident Report

**FOR A NON-EMERGENCY INCIDENT, WORK THROUGH CHAIN OF COMMAND TO REPORT AND TRANSPORT INJURED PERSONNEL AS NECESSARY.**

**FOR A MEDICAL EMERGENCY: IDENTIFY ON SCENE INCIDENT COMMANDER BY NAME AND POSITION AND ANNOUNCE "MEDICAL EMERGENCY" TO INITIATE RESPONSE FROM IMT COMMUNICATIONS/DISPATCH.**

**Use the following items to communicate situation to communications/dispatch.**

**1. CONTACT COMMUNICATIONS / DISPATCH** (Verify correct frequency prior to starting report)

*Ex: "Communications, Div. Alpha. Stand-by for Emergency Traffic."*

**2. INCIDENT STATUS:** Provide incident summary (including number of patients) and command structure.

*Ex: "Communications, I have a Red priority patient, unconscious, struck by a falling tree. Requesting air ambulance to Forest Road 1 at (Lat./Long.) This will be the Trout Meadow Medical, IC is TFLD Jones. EMT Smith is providing medical care."*

Severity of Emergency / Transport Priority	<input type="checkbox"/> <b>RED / PRIORITY 1 Life or limb threatening injury or illness. Evacuation need is IMMEDIATE</b> <i>Ex: Unconscious, difficulty breathing, bleeding severely, 2<sup>o</sup> – 3<sup>o</sup> burns more than 4 palm sizes, heat stroke, disoriented.</i> <input type="checkbox"/> <b>YELLOW / PRIORITY 2 Serious Injury or illness. Evacuation may be DELAYED if necessary.</b> <i>Ex: Significant trauma, unable to walk, 2<sup>o</sup> – 3<sup>o</sup> burns not more than 1-3 palm sizes.</i> <input type="checkbox"/> <b>GREEN / PRIORITY 3 Minor Injury or illness. Non-Emergency transport</b> <i>Ex: Sprains, strains, minor heat-related illness.</i>	
Nature of Injury or Illness & Mechanism of Injury		<i>Brief Summary of Injury or Illness (Ex: Unconscious, Struck by Falling Tree)</i>
Transport Request		<i>Air Ambulance / Short Haul/Hoist Ground Ambulance / Other</i>
Patient Location		<i>Descriptive Location &amp; Lat. / Long. (WGS84)</i>
Incident Name		<i>Geographic Name + "Medical" (Ex: Trout Meadow Medical)</i>
On-Scene Incident Commander		<i>Name of on-scene IC of Incident within an Incident (Ex: TFLD Jones)</i>
Patient Care		<i>Name of Care Provider (Ex: EMT Smith)</i>

**3. INITIAL PATIENT ASSESSMENT:** Complete this section for each patient as applicable (start with the most severe patient)

Patient Assessment: See IRPG page 106

Treatment:

**4. TRANSPORT PLAN:**

Evacuation Location (if different): (Descriptive Location (drop point, intersection, etc.) or Lat. / Long.) Patient's ETA to Evacuation Location:

Helispot / Extraction Site Size and Hazards:

**5. ADDITIONAL RESOURCES / EQUIPMENT NEEDS:**

*Example: Paramedic/EMT, Crews, Immobilization Devices, AED, Oxygen, Trauma Bag, IV/Fluid(s), Splints, Rope rescue, Wheeled litter, HAZMAT, Extrication*

**6. COMMUNICATIONS: Identify State Air/Ground EMS Frequencies and Hospital Contacts as applicable**

Function	Channel Name/Number	Receive (RX)	Tone/NAC *	Transmit (TX)	Tone/NAC *
COMMAND					
AIR-TO-GRND					
TACTICAL					

**7. CONTINGENCY: Considerations:** If primary options fail, what actions can be implemented in conjunction with primary evacuation method? Be thinking ahead.

**8. ADDITIONAL INFORMATION:** Updates/Changes, etc.

**REMEMBER:** Confirm ETA's of resources ordered. Act according to your level of training. Be Alert. Keep Calm. Think Clearly. Act Decisively.