

Middle Fork Complex



Wapiti

Bull Trout

Incident Action Plan

Wednesday August 14, 2024

Day Operations 0700-2100

Middle Fork Complex: P4R5Y9 (0402) - ID-BOF-000936

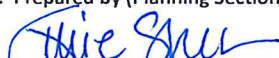

Wapiti: P4R4VV (0402) - ID-BOF-000683

Bull Trout: P4R4UR (0402) - ID-BOF-000699



For IAPs, Maps, Check-in & Demob:

linktr.ee/middleforkcomplex

INCIDENT OBJECTIVES	1. Incident Names Middle Fork Complex, Wapiti and Bull Trout	2. Date Prepared August 13, 2024	3. Time 2100		
4. Operational Period: August 14, 2024 Day Operations 0700 - 2100					
<p>Incident Objectives</p> <ul style="list-style-type: none"> Execute Strategies to protect the public within the fire planning area by providing timely notification of road, trail and area closures and evacuations to avoid injury or the loss of life. Reduce risk to incident responders by assessing and mitigating identified hazards whenever possible, and by only accepting residual risk to responders when protecting highly valued resources and assets when the probability of success is high. Utilize confine and point/zone protection strategies in all operational planning and implementation, providing for the highest probability of success and an acceptable level of residual risk to responders to avoid the loss of these highly valued assets. <p>Incident Requirements</p> <ul style="list-style-type: none"> Provide timely and accurate information to local communities, Boise and Sawtooth National Forests, partners, stakeholders and private landowners. Coordinate with Lead READ to protect all known cultural and historic sites from damage by suppression actions. Follow Idaho Roadless Area Rule guidance (2008), regarding appropriate suppression actions allowances/approval needs within roadless areas, in consultation with Boise NF lead Resource Advisor. Mitigate impacts to Threatened and Endangered species, including Bull trout and Whitebark pine, through coordination with Resource Advisors within the planning area. Prevent the spread of invasive aquatic species and noxious weeds by following the Boise National Forest resource mitigation guide, and through additional mitigations identified by Resource Advisors. Ensure coordination with Air Resource Advisor on smoke impacts to surrounding communities and incident responders. <p>Course of Action</p> <ul style="list-style-type: none"> Assess and implement confine and/or contain strategies, utilizing Management Action Points identified in the latest WFDSS decisions for Middle Fork Complex (Bulldog and Nellie), Wapiti and Bull Trout, to trigger when and where to consider additional actions and identify fire management resources necessary for actions. Utilize strategic risk analysis to weigh exposure of actions to fire management resource personnel. 					
8. Attachments (X if attached)					
X	ICS 203	X	Safety Message	X	Initial Attack Responsibilities
X	Incident Weather Forecast	X	ICS 206 Medical Plan	X	GB Chainsaw Parts Order Form
X	Fire Behavior Forecast	X	Resource Advisor Message	X	Division Supply Order Form
X	ICS 204 Division Assignment Lists	X	Demob Message & Tentative List	X	Incident Map
X	ICS 220 Air Operations Summary	X	Finance Message	X	ICS 214 Activity Log
X	ICS 205 Incident Radio Comm Plan	X	Human Resources Message	X	Medical Incident Report – 8 Line
9. Prepared by (Planning Section Chief)  PSCE			9. Approved by (Incident Commander) 		

ORGANIZATIONAL ASSIGNMENT LIST (ICS 203)	1. Incident: Middle Fork Complex; Wapiti; Bull Trout	2. Date Prepared: 8/13/2024	
3. Time Prepared: 2000 hrs	4. Operational Period: August 14, 2024 0700-2100 DAY Operations		
5. Incident Commanders		9. Operations Section	
Incident Commander	Rick Connell	Strategic Ops	Paul Diaz
Deputy Incident Commander	Craig Glazier	Planning Ops	Ashley Sites
Safety Officer	Matt Nelson; Mike Cachero; Jonathan White (T)		
Information Officer	Chris Ziegler	a. Branch I	
Liaison Officer	Bryan Donner	Branch Director	Kevin Smith; Ashton Ferruzzi (T)
6. Agency Representatives		Division D	Jessica Vincent; Sam Lewis (T)
Boise Forest Supervisor	Brant Petersen	Division O	unstaffed
Boise Forest Agency Administrator	Jake Strohmeyer; Matt Filbert (T); David Francomb (T)	Division P	Nick Peters; Troy Sanders (T)
Idaho Department of Lands	Dean Johnson	Division T	Mike Tuffelmire; Dustin Roper (T)
6b. Cooperators			
Boise County Sheriff	Scott Turner	b. Branch II	
Garden Valley RFD	Paul Cleveland	Branch Director	Adam Carr
7. Planning Section		Division A	Rob Spence
Chief	Mark Glos; Julie Shea	Division M	Dave Maclay-Schulte; Javier Kirker (T)
Resource Unit	Patty Bates; Matt Reed (T)	Division V	Dan Helterline; Charlie Fisher (T)
Demob Unit	Sue Puddy		
Situation Unit	Jason Willoughby; Brett Gore	c. Air Operations Branch	
GISS	Jeff Sprovkin; Shannon Rebinski (T); Mitch Carey (T); Majorie Jerez	AOBD	Jeff Polack
Fire Behavior Branch I	Mike Pagoaga	ASGS	Steve Croy
Fire Behavior Branch II	Mike Locke		
Incident Meteorologist	Mike Seaman	Helibase Mgr	
LTAN	Jon Rieck; Todd Erdody		
SOPL	Justin Pappani; Carolyn Warden (T)	10. Finance Section	
Lead READ	Matt Robinson	Chief	Biddy Simet; Wendy McCartney
Training Specialist	Brian Lamphiear		
Human Resource Specialist	Sherry Neal	Procurement	Tammy Peterson (T)
Air Resource Advisor	Adam Simmons		
ITSS	Michael Harper; Ryan Land (T); Victor Taus (T);	Time Unit Leader	Quoya Waters
8. Logistics Section		Personnel Time	Ashley Johnson; Victoria Davis; Haleigh Stott; Rhea Warren
Chief	Russell Riebe; Peter Pappas	Equipment Time	Karen Sargeant; Tamala Carter; Dawn Lint
Logistics – Warm Springs	Jon Kautt		
Supply Unit Leader	Meghan Carosella	Cost Unit	Terry Groesbeck (T)
Ordering Manager	Darcy Wheeler (V)	Comp Unit	Quoya Waters
Medical Unit Leader	Rosemary Myers		
Communications	Mike Scherer; Bill Erhardt		
Food Unit	Justin Troddick; Chad BaconRind (T)		
Facility Unit Leader	Pat Nelson		
Ground Support	Kyler McCarrel; Nick Lyytimen (T)	Prepared by Resource Unit Leader:	
Security Manager	John Velsvaag	<i>Patty Bates & Matt Reed</i>	



Fire Weather FORECAST

IMET Contact - (816) 589-0168



FORECAST NO: 4
PREDICTION FOR: 0700 WED – 0700 THU
SHIFT DATE: WEDNESDAY August 14, 2024

FORECAST ISSUED: 08/13/2024 at 1900
SIGNED: Mike Seaman
 Incident Meteorologist (Mike Seaman)

WEATHER DISCUSSION: Conditions will trend slightly drier today, with lingering moisture keeping daytime RH elevated above 20% and allowing for a stray shower or thunderstorm during the afternoon and early evening. The morning inversion will remain over the area through early afternoon before lifting after 1400. As this inversion lifts, ventilation will increase over the area as RH falls to near minimum values and temperatures peak between 1500 and 1700. Winds across most areas will remain terrain driven through the day, with a general westerly flow developing over upper ridgelines. Lingering moisture will allow for good overnight RH recovery at most elevations, with a thermal belt likely developing above 7000 feet tonight.

FORECAST FOR TODAY:		
	MIDDLE FORK COMPLEX	WAPITI AND BULLTROUT FIRES
SKY/WEATHER	Filtered sunshine with a few afternoon cumulus buildups. A stray shower or thunderstorm possible after 1200.	Filtered sunshine with a few afternoon cumulus buildups. A stray shower or thunderstorm possible after 1200.
MAX TEMPERATURE	Low Elevation (3500 ft): 86-89° F Mid Elevation (4500 ft): 78-81° F High Elevation (7000 ft): 69-72° F	Low Elevation (5000 ft): 75-78° F Mid Elevation (6500 ft): 70-73° F High Elevation (8000 ft): 64-67° F
MIN RELATIVE HUMIDTY	Low Elevation (3500 ft): 20-23% Mid Elevation (4500 ft): 22-25% High Elevation (7000 ft): 26-29%	Low Elevation (5000 ft): 22-25% Mid Elevation (6500 ft): 26-29% High Elevation (8000 ft): 30-33%
20 FT WINDS	Slope/drainage 3-6 mph becoming west 4-8 mph after 1400. Ridgelines gusting 11-16 mph during the afternoon.	Slope/drainage 3-6 mph becoming west 5-9 after 1400. Ridgelines gusting 12-18 mph during the afternoon.
INVERSION	Lifting between 1400 and 1600.	Lifting between 1400 and 1600.
PM MIXING HEIGHT	14,000 ft MSL	15,500 ft MSL
PM TRANSPORT WIND	West 10-15 mph	West 10-15 mph
PRECIP CHANCE (CWR)	2% until 1200 then 15%. (CWR: 5%)	2% until 1200 then 20%. (CWR: 10%)
LIGHTNING CHANCE (LAL)	0% until 1200 then 15%. (LAL: 1 then 2)	0% until 1200 then 15%. (LAL: 1 then 2)

FORECAST FOR TONIGHT:		
	MIDDLE FORK COMPLEX	WAPITI AND BULLTROUT FIRES
SKY/WEATHER	A stray shower or thunderstorm possible until 2000. Otherwise mostly clear.	A stray shower or thunderstorm possible until 2000. Otherwise mostly clear.
MIN TEMPERATURE	Low Elevation (3500 ft): 52-57° F Mid Elevation (4500 ft): 54-57° F High Elevation (7000 ft): 51-55° F	Low Elevation (5000 ft): 54-57° F Mid Elevation (6500 ft): 51-55° F High Elevation (8000 ft): 48-51° F
MAX RELATIVE HUMIDITY	Low Elevation (3500 ft): 60-75% High Elevation (4500 ft): 55-65% High Elevation (7000 ft): 45-55%	Low Elevation (5000 ft): 55-65% Mid Elevation (6500 ft): 40-50% High Elevation (8000 ft): 40-50%
20 FT WINDS	West 4-9 mph until 2000 then downslope / down-drainage 3-8 mph.	West 5-9 mph until 2000 then downslope / down-drainage 3-8 mph
INVERSION	Developing around 2000	Developing below 7000 ft after 2000. Thermal belt developing above 7000 ft and persisting overnight.
PRECIP CHANCE (CWR)	15% until 2000 then 2%. (CWR: 2%)	15% until 2000 then 2%. (CWR: 2%)
LIGHTNING CHANCE (LAL)	15% until 2000 then 1%. (LAL: 2 then 1)	15% until 2000 then 2%. (LAL: 2 then 1)

Please text or send a picture of your weather observations to the IMET at: [435-248-2053](tel:435-248-2053). Thank you!

FIRE BEHAVIOR FORECAST

FORECAST NUMBER: 5	TYPE OF FIRE: Wildland Fire
FIRE NAME: Middle Fork Cmplx, Wapiti, Bulltrout	OPERATIONAL PERIOD: Wednesday, 08/14/2024
DATE ISSUED: August 13, 2024	TIME ISSUED: 1900
UNIT: ID-BOF	SIGNED: <i>Mike Pagoaga</i> - FBAN

WEATHER

*****SEE FIRE WEATHER FORECAST*****

Inversion Lifting between 1500 and 1600
Good overnight recovery

*Local Weather Thresholds that shout **WATCH OUT**
Temperatures above 80°, Relative Humidity below 20%, 20' winds above 20 mph, ERC > 61*

FUELS

Predominant fuels burning timber understory (TU5), and moderate load, timber litter (TL8) with inter-mixed conifer stands and sub-alpine stringers at higher elevations, sub-alpine with heavy lichen and moss, heavy dead fuels completely consuming.

Dead 1,000 Hr fuel moisture: 10% **ERC:** 58 = 84th percentile

FIRE BEHAVIOR

General Fire Behavior:

Active burn period between 1600 and 2400

Fire spread will continue in various directions based on complex terrain but will remain along ridgetops and drainages that are aligned with general winds. Old fire scars are currently resistant to fire spread. Live fuels are beginning to show signs of contributing to fire spread and intensity.

*Fine Dead Fuel Moisture: 5% unshaded, 8% shaded
Probability of Ignition 40-65% depending on shading*

Specific Fire Behavior:

Middle Fork Complex

Bulldog: Fire spread will continue along Lightning Ridge to the east. Expect group torching and short-range spotting into receptive fuels followed by up-hill terrain driven runs after 1400.

Nellie: The main fire remains along wind aligned drainages and ridgetops. Group torching and short-range spotting will continue to spread the fire to the south and east toward Deadwood Lookout.

Wapiti: Continued backing to the west and north along Wolf Creek Ridge. Group torching at higher elevations into receptive fuels is likely. Lower elevations are sheltered and will see moderate fire behavior and intensity. Fire will carry through lower elevations due to ground cover.

Bulltrout: Smoldering and creeping will continue. Potential for increased activity in unburned islands. Falling snags may impact containment lines.

Safety

Organic materials have been burning out from around logs and rocks. Rolling objects are likely.

DIVISION ASSIGNMENT LIST ICS-204		1. BRANCH I	2. DIVISION/GROUP D
3. INCIDENT NAME Middle Fork Complex		4. OPERATIONAL PERIOD Date: August 14, 2024 Time: 0700 - 2100	

OPERATIONS PERSONNEL

PLANNING OPS: Ashley Sites
STRATEGIC OPS: Paul Diaz
DIVISION SUPERVISOR: Jessica Vincent; Sam Lewis (T)

BRANCH DIRECTOR: Kevin Smith; Ashton Ferruzzi (T)
AIR OPERATIONS BRANCH DIRECTOR: Jeff Polack

RESOURCES ASSIGNED THIS PERIOD

STRIKE TEAM/TASK FORCE/RESOURCE DESIGNATOR	Last Shift	LEADER	NUMBER PERSONS	DROP OFF POINT/TIME	PICK UP POINT/TIME	
CR2IA Boise Crew 3	C-7	8/19	William Streff	21	ICP / 0700	ICP/2100
CRW2 IMB Forestry	C-14	8/27	Gorgonio Ibarra	20	ICP / 0700	ICP/2100
ENG6 Big State Wildfire	E-91	8/25	James Maillard	3	ICP / 0700	ICP/2100
ENG6 Cahoon Wildland Fire & Timber	E-92	8/25	Mike Snow	3	ICP / 0700	ICP/2100
ENG6 NV-HTF Engine 622	E-10	8/21	Skyler Benna-Couttenye	3	ICP / 0700	ICP/2100
ENG3 ID-BOF-361	Local			3	ICP / 0700	ICP/2100
ENG6 Aspen FPD 24 Brush 61	E-86	8/18	Maureen McPhee	3	ICP / 0700	ICP / 2100
ENG6 Westminster FD	E-110	8/23	Corbin Gray	3	ICP / 0700	ICP / 2100
CHP2 Flying V Tree	E-114	8/24	Cody Vincent	3	ICP / 0700	ICP/2100

CONTROL OPERATIONS:

Task: Assess structures and structure protection needs in the vicinity of Silver Creek. Prep road for holding fire to the east. Scout potential anchor on the west side of the fire.

Purpose: Prevent fire growth to the north and west.

End State: Silver Creek values are protected and the fire remains to the east of Middle Fork of the Payette River.

SPECIAL INSTRUCTIONS:

If the fire moves to the north and threatens to breach MAP 3. Notify DIVS D, Branch I, OSC. Evaluate need to implement point protection measures at campgrounds and infrastructure along Middle Fork Payette River.

FUNCTION		FREQUENCY Rx	FREQUENCY Tx	CHAN	FUNCTION		FREQUENCY Rx	FREQUENCY Y Tx	CHAN.
TACTICAL	Tac 1	168.0500 (123.0)	168.0500 (123.0)		A/G PRIMARY	BR I	166.6000	166.6000	
COMMAND	CMD 10	169.5375 (123.0)	164.7125 (123.0)						
COMMAND									

PREPARED BY (RESOURCE UNIT LEADER) <i>/s/ Patty Bates, RESL</i>	APPROVED BY (PLANNING SECTION CHIEF) <i>/s/ Mark Glas, PSCC</i>	DATE 8/13/24	TIME 2200
--	--	-----------------	--------------

DIVISION ASSIGNMENT LIST ICS-204	1. BRANCH	2. DIVISION/GROUP
	I	O

3. INCIDENT NAME Middle Fork Complex	4. OPERATIONAL PERIOD Date: August 14, 2024 Time: 0700 - 2100
--	---

OPERATIONS PERSONNEL	
PLANNING OPS: Ashley Sites STRATEGIC OPS: Paul Diaz DIVISION SUPERVISOR:	BRANCH DIRECTOR: Kevin Smith; Ashton Ferruzzi (T) AIR OPERATIONS BRANCH DIRECTOR: Jeff Polack

RESOURCES ASSIGNED THIS PERIOD					
STRIKE TEAM/TASK FORCE/RESOURCE DESIGNATOR	Last Shift	LEADER	NUMBER PERSONS	DROP OFF POINT/TIME	PICK UP POINT/TIME
<i>Unstaffed</i>					

CONTROL OPERATIONS:

SPECIAL INSTRUCTIONS:

FUNCTION	FREQUENCY Rx	FREQUENCY Tx	CHAN	FUNCTION	FREQUENCY Rx	FREQUENCY Y Tx	CHAN.
TACTICAL	TAC 3	168.6000 (123.0)	168.6000 (123.0)	A/G PRIMARY	Br I	166.6000	166.6000
COMMAND	CMD 10	169.5375 (123.0)	164.7125 (123.0)				
COMMAND							

PREPARED BY (RESOURCE UNIT LEADER) <i>/s/ Patty Bates, RESL</i>	APPROVED BY (PLANNING SECTION CHIEF) <i>/s/ Mark Glas, PSCC</i>	DATE 8/13/24	TIME 2200
--	--	-----------------	--------------

DIVISION ASSIGNMENT LIST ICS-204				1. BRANCH I		2. DIVISION/GROUP T			
3. INCIDENT NAME Middle Fork Complex				4. OPERATIONAL PERIOD Date: August 14, 2024 Time: 0700 - 2100					
OPERATIONS PERSONNEL									
PLANNING OPS: Ashley Sites STRATEGIC OPS: Paul Diaz DIVISION SUPERVISOR: Mike Tuffelmire; Dustin Roper (T)				BRANCH DIRECTOR: Kevin Smith; Ashton Ferruzzi (T) AIR OPERATIONS BRANCH DIRECTOR: Jeff Polack					
RESOURCES ASSIGNED THIS PERIOD									
STRIKE TEAM/TASK FORCE/RESOURCE DESIGNATOR		Last Shift	LEADER	NUMBER PERSONS	DROP OFF POINT/TIME	PICK UP POINT/TIME			
CRW1 San Juan IHC	C-6	8/14	Tom Allbright	25	ICP / 0700	ICP/2100			
CRW1 Snake River	C-11	8/24	Ken Bochniak	20	ICP / 0700	ICP/2100			
CR2IA Miller Timber	C-8	8/18	Mike Hortert	20	ICP / 0700	ICP/2100			
CR2IA Anthracite	C-5	8/21	Troy Stimaker	20	ICP / 0700	ICP/2100			
* CRW2 G & C Forestry	C-16	8/21	Luis Vera	20	ICP / 0700	ICP/2100			
CRW2 Torres Contracting	C-9	8/15	Angel Cortes	20	ICP / 0700	ICP/2100			
* ENG3 UT-UWF Engine 321	E-90	8/21	Collin Bertoch	7	ICP / 0700	ICP/2100			
ENG3 National Wildland Fire	E-80	8/23		3	ICP / 0700	ICP/2100			
ENG6 Denver FD Engine 602	E-83	8/19	Jay McCann	3	ICP / 0700	ICP/2100			
ENG6 Northern Utah Fire	E-111	8/25	Anthony Gordon	3	ICP / 0700	ICP/2100			
WTT2 CA-CNF Water Tender 245	E-20	8/25	Joshua Craddock	2	ICP / 0700	ICP/2100			
DOZ2 Sandhollow Fire Department	E-89	8/16	Dustin Wenger	2	ICP / 0700	ICP/2100			
MESU Med Mod #1	E-46	8/24	Kelly Williams	2	ICP / 0700	ICP/2100			
CHP2 Flying V Tree	E-9	8/19	Ayrik Fisher	3	Warm Springs /0700	ICP/2100			
SKG2 Bull Creek Forestry	E-87	8/25		2	ICP / 0700	ICP/2100			
CONTROL OPERATIONS:									
TASK: Improve direct and indirect line construction from Middle Fork Payette River to 611G Road and then on towards Road 611. Prep and burn Road 611, as conditions allow. Construct indirect line around the Lightning Creek subdivision and plumb with hose lay.									
PURPOSE: Keep the fire north and east of structures along indirect line and north of Road 611 and Lightning Creek community.									
END STATE: Lightning Creek and Crouch communities are protected. The fire remains east of the Middle Fork of the Payette River.									
* Identified for IA									
SPECIAL INSTRUCTIONS:									
<i>If the fire moves to the south into the Lightning creek drainage with the potential to breach containment lines, Notify DIVS T, Branch I, OSC, LOFR. Notifications to Law Enforcement and Boise County EMS will be made. Evaluate the need for point protection of values within the subdivisions along Middle Fork Payette River.</i>									
FUNCTION		FREQUENCY Rx	FREQUENCY Tx	CHAN	FUNCTION		FREQUENCY Rx	FREQUENCY Y Tx	CHAN.
TACTICAL	Tac 4	166.7250 (123.0)	166.7250 (123.0)		A/G PRIMARY	Br 1	166.6000	166.6000	
COMMAND	CMD 10	169.5375 (123.0)	164.7125 (123.0)						
COMMAND									
PREPARED BY (RESOURCE UNIT LEADER)				APPROVED BY (PLANNING SECTION CHIEF)			DATE	TIME	
/s/ Patty Bates, RESL				/s/ Mark Glas, PSCC			8/13/24	2200	

DIVISION ASSIGNMENT LIST ICS-204	1. BRANCH I	2. DIVISION/GROUP T page 2 of 2
3. INCIDENT NAME Middle Fork Complex	4. OPERATIONAL PERIOD Date: August 14, 2024 Time: 0700 - 2100	

OPERATIONS PERSONNEL

PLANNING OPS: Ashley Sites STRATEGIC OPS: Paul Diaz DIVISION SUPERVISOR: Mike Tuffelmire; Dustin Roper (T)	BRANCH DIRECTOR: Kevin Smith; Ashton Ferruzzi (T) AIR OPERATIONS BRANCH DIRECTOR: Jeff Polack
---	--

RESOURCES ASSIGNED THIS PERIOD

STRIKE TEAM/TASK FORCE/RESOURCE DESIGNATOR	Last Shift	LEADER	NUMBER PERSONS	DROP OFF POINT/TIME	PICK UP POINT/TIME
TFLD Joshua Dominguez	O-86	8/27	1	ICP / 0700	ICP/2100
TFLD Cannon Mix	O-8	8/24	1	ICP / 0700	ICP/2100
* TFLD Andrew Nielsen (T)	C-7.1	8/19	1	ICP / 0700	ICP/2100
SOFR Doug Havlina	O-6	8/24	1	ICP / 0700	ICP/2100
EMPF Ethan Biederman	O-38	8/24	1	ICP / 0700	ICP/2100
ARCH Joe Bergstrom	O-71	8/21	1	ICP / 0700	ICP/2100
REAF Lucas Roy (T)	O-72	8/19	1	ICP / 0700	ICP/2100
REAF Kyle Paffett (T)	O-89	8/23	1	ICP / 0700	ICP/2100
REAF Matt Robinson	O-67	8/19	1	ICP / 0700	ICP/2100
REAF Tony Papa	O-60	8/25	1	ICP / 0700	ICP/2100

CONTROL OPERATIONS:

TASK: Improve direct and indirect line construction from Middle Fork Payette River to 611G Road and then on towards Road 611. Prep and burn Road 611, as conditions allow. Construct indirect line around the Lightning Creek subdivision and plumb with hose lay.

PURPOSE: Keep the fire north and east of structures along indirect line and north of Road 611 and Lightning Creek community.

END STATE: Lightning creek and Crouch communities are protected. The fire remains east of the Middle Fork of the Payette River.

* Identified for IA

SPECIAL INSTRUCTIONS:

If the fire moves to the south into the Lightning creek drainage with the potential to breach containment lines, Notify DIVS T, Branch I, OSC, LOFR. Notifications to Law Enforcement and Boise County EMS will be made. Evaluate the need for point protection of values within the subdivisions along Middle Fork Payette River.

FUNCTION	FREQUENCY Rx	FREQUENCY Tx	CHAN	FUNCTION	FREQUENCY Rx	FREQUENCY Y Tx	CHAN.
TACTICAL	Tac 4	166.7250 (123.0)	166.7250 (123.0)	A/G PRIMARY	Br 1	166.6000	166.6000
COMMAND	CMD 10	169.5375 (123.0)	164.7125 (123.0)				
COMMAND							

PREPARED BY (RESOURCE UNIT LEADER) <i>/s/ Patty Bates, RESL</i>	APPROVED BY (PLANNING SECTION CHIEF) <i>/s/ Mark Glos, PSCC</i>	DATE 8/13/24	TIME 2200
---	---	------------------------	---------------------

DIVISION ASSIGNMENT LIST

ICS-204

1. BRANCH

I

2. DIVISION/GROUP

P

3. INCIDENT NAME

**Middle Fork Complex
(Nellie)**

4. OPERATIONAL PERIOD

Date: August 14, 2024

Time: 0700 - 2100

OPERATIONS PERSONNEL

PLANNING OPS: Ashley Sites
STRATEGIC OPS: Paul Diaz
DIVISION SUPERVISOR: Nick Peters; Troy Sanders (T)

BRANCH DIRECTOR: Kevin Smith; Ashton Ferruzzi (T)
AIR OPERATIONS BRANCH DIRECTOR: Jeff Polack

RESOURCES ASSIGNED THIS PERIOD

STRIKE TEAM/TASK FORCE/RESOURCE DESIGNATOR	Last Shift	LEADER	NUMBER PERSONS	DROP OFF POINT/TIME	PICK UP POINT/TIME	
WFM1 Storm Peak Wildland Fire Mod	O-36	8/26	Tim Cusack	10	spiked	spiked
EMPF Jack Reynoso	O-20	8/24		1	ICP / 0700	ICP / 2100
Structure Wrap Group:						
THSP Charlie Rosier	O-68	8/17		1	ICP / 0700	ICP / 2100
FFT1 Steve Brown	O-70	8/17		1	ICP / 0700	ICP / 2100

CONTROL OPERATIONS:

Task: Provide for the protection of the Deadman and Scott Mt lookouts and the communication tower. Assess opportunities to contain the fires.

Purpose: Prevent damage to historic structures and operational infrastructure. Have potential control lines identified and determine resource needs for operations if/when needed to be implemented.

End State: Values at risk are not damaged by fire and infrastructure affected by the comm tower remains operational.

SPECIAL INSTRUCTIONS:

If the fire moves to the south towards Pine Creek Campground and threatens to breach MAP 6; Notify DIVS P, Branch I, OSC. Depending on Fire Behavior and rate of spread of the fire, evaluate the need to conduct alternative indirect tactics or consider point protection of values along the Hwy 17 corridor.

FUNCTION	FREQUENCY Rx	FREQUENCY Tx	CHAN	FUNCTION	FREQUENCY Rx	FREQUENCY Y Tx	CHAN.
TACTICAL	TAC 2	168.2000 (123.0)	168.20000 (123.0)	A/G PRIMARY	Br I	166.6000	166.6000
COMMAND	CMD10	169.5375 (123.0)	164.7125 (123.0)				
COMMAND							

PREPARED BY (RESOURCE UNIT LEADER) <i>/s/ Patty Bates, RESL</i>	APPROVED BY (PLANNING SECTION CHIEF) <i>/s/ Mark Glas, PSCC</i>	DATE 8/13/24	TIME 2200
---	---	------------------------	---------------------

DIVISION ASSIGNMENT LIST ICS-204		1. BRANCH II	2. DIVISION/GROUP A
3. INCIDENT NAME Bull Trout		4. OPERATIONAL PERIOD Date: August 14, 2024 Time: 0700 - 2100	

OPERATIONS PERSONNEL

PLANNING OPS: Ashley Sites
 STRATEGIC OPS: Paul Diaz
 DIVISION SUPERVISOR: Rob Spence

BRANCH DIRECTOR: Adam Carr
 AIR OPERATIONS BRANCH DIRECTOR: Jeff Polack

RESOURCES ASSIGNED THIS PERIOD

STRIKE TEAM/TASK FORCE/RESOURCE DESIGNATOR	Last Shift	LEADER	NUMBER PERSONS	DROP OFF POINT/TIME	PICK UP POINT/TIME
ENG6 Rocky Mountain Fire	E-17	8/25	3	Warm Springs/0700	Warm Springs/2100

CONTROL OPERATIONS:

Task: Patrol as necessary. Repair suppression damage. Remove un-needed fire equipment.

Purpose: Maintain and increase containment of the Bull Trout fire. Fix damage caused by fire suppression actions. Be prepared to respond to any increased fire activity while maintaining a safe campground.

End State: Bull Trout fire is controlled in it's current footprint. Damage from suppression actions is returned as nearly as possible to the pre-fire condition. Campers can camp safely in the Bull Trout campground.

SPECIAL INSTRUCTIONS:

Use Field Maps to collect suppression activities and values at risk

FUNCTION		FREQUENCY Rx	FREQUENCY Tx	CHA N	FUNCTION	FREQUENCY Rx	FREQUENCY Y Tx	CHAN.
TACTICAL	TAC 1	168.0500 (103.5)	168.0500 (103.5)		A/G TERTIARY	167.0750	167.0750	
COMMAND	CMD 7	168.0125 (103.5)	164.5750 (103.5)					
COMMAND								

PREPARED BY (RESOURCE UNIT LEADER) <i>/s/ Patty Bates, RESL</i>	APPROVED BY (PLANNING SECTION CHIEF) <i>/s/ Mark Glos, PSCC</i>	DATE 8/13/24	TIME 2200
--	--	-----------------	--------------

DIVISION ASSIGNMENT LIST ICS-204		1. BRANCH II	2. DIVISION/GROUP M
3. INCIDENT NAME Wapiti		4. OPERATIONAL PERIOD Date: August 14, 2024 Time: 0700 - 2100	

OPERATIONS PERSONNEL			
PLANNING OPS: Ashley Sites STRATEGIC OPS: Paul Diaz DIVISION SUPERVISOR: Dave Macclay-Schulte; Javier Kirker (T)		BRANCH DIRECTOR: Adam Carr AIR OPERATIONS BRANCH DIRECTOR: Jeff Polack	

RESOURCES ASSIGNED THIS PERIOD						
STRIKE TEAM/TASK FORCE/RESOURCE DESIGNATOR	Last Shift	LEADER	NUMBER PERSONS	DROP OFF POINT/TIME	PICK UP POINT/TIME	
ENG4 Blazerunner	E-21	8/14	Jerry Fugat	3	Warm Springs 0700	Warm Springs 2100
ENG6 Axxess Fire	E-11	8/20	Shane Sexton	3	Warm Springs 0700	Warm Springs 2100
ENG3 AAA	E-38	8/26	Vanessa Aldrich	3	Warm Springs 0700	Warm Springs 2100
ENG3 Los Pinos 88	E-96	8/22	David Doucleff	5	Warm Springs 0700	Warm Springs 2100
ENG3 Colorado River Fire Engine 361	E-94	8/24	Zach Niccoli	3	Warm Springs 0700	Warm Springs 2100
WTT2 F4 Fire	E-21	8/25	Craig Fisher	2	Warm Springs 0700	Warm Springs 2100
WTS1 R B & H Enterprises	E-81	8/26	Rob Connell	1	Warm Springs 0700	Warm Springs 2100
EMPF Anthony Amoroso	O-27	8/15		1	Warm Springs 0700	Warm Springs 2100
TFLD Dan Dosch	E-96.2	8/22		1	Warm Springs 0700	Warm Springs 2100
TFLD Hunter Flinders (T)	E-96.3	8/22		1	Warm Springs 0700	Warm Springs 2100

CONTROL OPERATIONS:

TASK: Provide and improve protections for structures and improvements in Wapiti Creek, Sawtooth Lodge, and infrastructure in the Grandjean area. Conduct firing operations based on fire behavior.

PURPOSE: Minimize fire impacts to local infrastructure in the Grandjean area.

END STATE: Local infrastructure is protected from fire impact

SPECIAL INSTRUCTIONS:

Evaluate fires progression and rate of spread to the east and potential to impact values.

FUNCTION		FREQUENCY Rx	FREQUENCY Tx	CHAN	FUNCTION		FREQUENCY Rx	FREQUENCY Y Tx	CHAN.
TACTICAL	TAC 3	168.6000 (103.5)	168.6000 (103.5)		A/G PRIMARY	Br II	168.3750	168.3750	
COMMAND	CMD 8	171.8500 (103.5)	162.8000 (103.5)						
COMMAND									

PREPARED BY (RESOURCE UNIT LEADER) <i>Isi Patty Bates, RESL</i>	APPROVED BY (PLANNING SECTION CHIEF) <i>Isi Mark Glos, PSCC</i>	DATE 8/13/24	TIME 2200
--	--	-----------------	--------------

DIVISION ASSIGNMENT LIST ICS-204				1. BRANCH II		2. DIVISION/GROUP V			
3. INCIDENT NAME Wapiti				4. OPERATIONAL PERIOD Date: August 14, 2024 Time: 0700 - 2100					
OPERATIONS PERSONNEL									
PLANNING OPS: Ashley Sites STRATEGIC OPS: Paul Diaz DIVISION SUPERVISOR: Dan Helterline; Charlie Fischer (T)				BRANCH DIRECTOR: Adam Carr AIR OPERATIONS BRANCH DIRECTOR: Jeff Polack					
RESOURCES ASSIGNED THIS PERIOD									
STRIKE TEAM/TASK FORCE/RESOURCE DESIGNATOR			Last Shift	LEADER	NUMBER PERSONS	DROP OFF POINT/TIME	PICK UP POINT/TIME		
CRW1 Lolo IHC	C-10	8/26	Shawn Faiella	22	Warm Springs 0700	Warm Springs 2100			
ENG3 NV-WID Engine 2309	E-29	8/25	Scott Pace	3	Warm Springs 0700	Warm Springs 2100			
ENG6 ESB Management	E-39	8/26	Matt Nickle	3	Warm Springs 0700	Warm Springs 2100			
ENG4 ID-FHA Engine 441	E-49	8/14	Derrick Tinno	3	Warm Springs 0700	Warm Springs 2100			
ENG5 Flat Rock	E-93	8/25	Cody Blair	3	Warm Springs 0700	Warm Springs 2100			
ENG5 Three Rivers	E-41	8/25	Murray Hannaweeka	3	Warm Springs 0700	Warm Springs 2100			
WTT2 Treasure Valley	E-116	8/26	John Can Auken	2	Warm Springs 0700	Warm Springs 2100			
WTS2 Dust Buster	E-12	8/28	Paul Kurzeborn	1	Warm Springs 0700	Warm Springs 2100			
WTS2 Allens	E-42	8/21	Dave Shaw	1	Warm Springs 0700	Warm Springs 2100			
DZR2 Tough Equipment	E-103	8/25	Joseph Guiffra	1	Warm Springs 0700	Warm Springs 2100			
AMB2 Fireline Ambo #1	E-5	8/19	Cassie Allen	2	Warm Springs 0700	Warm Springs 2100			
TFLD Nick Clark (T)	O-38.32	8/22		1	Warm Springs 0700	Warm Springs 2100			
SOFR Rob Hilfer	O-14	8/15		1	Warm Springs 0700	Warm Springs 2100			
TFLD Sean Weston	O-191	8/21		1	Warm Springs 0700	Warm Springs 2100			
EMPF Jeff Ullrey	O-19	8/24			Warm Springs 0700	Warm Springs 2100			
EMTF Ryan Le Baron	O-33.52	8/15		1	Warm Springs 0700	Warm Springs 2100			
REAF Garry Brown	O-22	8/23		1	Warm Springs 0700	Warm Springs 2100			
REAF Ryan Santo	O-23	8/23		1	Warm Springs 0700	Warm Springs 2100			
CONTROL OPERATIONS: Task: Provide and improve protections for structures and improvements in Bear Creek, Camp Creek and infrastructure in the Grandjean area. Conduct firing operations based on fire behavior. Patrol / monitor fire perimeter. Ensure fire edge is secured. Purpose: Secure fire line through progressive firing operations to bring the fire to a more favorable fireline location. End State: Existing structures and infrastructure do not sustain further damage. Safe ingress and egress is ensured.									
SPECIAL INSTRUCTIONS: <i>Evaluate fires progression and rate of spread to the and west and potential to get established in Wolf creek drainage.</i>									
FUNCTION		FREQUENCY Rx	FREQUENCY Tx	CHAN	FUNCTION		FREQUENCY Rx	FREQUENCY Y Tx	CHAN.
TACTICAL	TAC 2	168.2000 (103.5)	168.2000 (103.5)		A/G PRIMARY	Br II	168.3750	168.3750	
COMMAND	CMD 8	171.8500 (103.5)	162.8000 (103.5)						
COMMAND									
PREPARED BY (RESOURCE UNIT LEADER)				APPROVED BY (PLANNING SECTION CHIEF)			DATE	TIME	
/s/ Patty Bates, RESL				/s/ Mark Glos, PSCC			8/13/24	2200	

AIR OPERATIONS SUMMARY ICS-220

Incident Name / Number Middle Fork Complex / ID-BOF-000936 Wapiti / ID-BOF-000683 Bull Trout / ID-BOF-000699	Sunrise 6:47	Sunset 20:48	Civil: Garden Valley HB 21:17
---	-----------------	-----------------	----------------------------------

General Remarks, Safety Notes, Hazards, Air Operations Special Equipment, etc.
All GPS data will be collected in DD° MM.MMM'

- Pilots/flight crews discuss inclement weather plans.
- Aircraft will cease tactical operations by sunset. Ferry flights are allowed during 30 minutes after sunset. This is due to reduced visibility caused by smoke and topography.
- Absolutely clear drop arealines before initiating drop sequence.
- You may see or hear a UAV (drone) on/over your division. We will have one operating over the Complex. Any questions, confirm with your DIVS.
- As always – if you see something questionable, say something!!!

Incident Frequencies	RX	Tone	TX	Tone	AM/FM
Bt1 A/G Primary (Buildog)	166.6000	-	166.6000	-	FM
Bt1 A/G Secondary (Buildog)	169.2000	-	169.2000	-	FM
Bt1 A/G Tertiary (Nellie)	170.0250	-	170.0250	-	AM
Bt2 A/G Primary (Wapiti)	168.3750	-	168.3750	-	FM
Bt2 A/G Secondary (Wapiti)	172.4500	-	172.4500	-	FM
Bt2 A/G Tertiary (Bull Trout)	167.0750	-	167.0750	-	FM
Deck	163.1000	-	163.1000	-	FM
Air Guard	168.6250	-	168.6250	-	FM
State Comm (EMIS F2)	155.2800	156.7	155.2800	156.7	FM
Air-to-Air					
Wapiti – A/A TFR	120.1250	NA	120.1250	NA	AM
Wapiti – A/A Secondary	125.9750	NA	125.9750	NA	AM
Buildog – A/A TFR	126.8250	NA	126.8250	NA	AM
Buildog – A/A Secondary	133.0250	NA	133.0250	NA	AM
Nellie – A/A TFR	123.6000	NA	123.6000	NA	AM

HELICOPTERS (Garden Valley Helibase)

FAA #	Type	Make/Model	Helibase	Avail	Start	Remarks
N132BH	3	AS-350D3	Garden Valley	Y	0830	EU/Crew w/ bucket
N330NC	2	B-212S	Garden Valley	Y	0830	EU/Crew w/ bucket
N205LM	2	B-205 A++	Garden Valley	Y	0830	EU/Crew w/ bucket
N2773H	1	B-205 A++	Garden Valley	Y	0830	EU/Crew w/ bucket
N699RH	1	Kaman/Kimax	Garden Valley	Y	0830	Bucket
N402PJ	3	B-407	-	Y	0830	Per request - CWN @ Stanley Airport, Sawtooth NF

UNMANNED AIRCRAFT SYSTEMS

FAA #	Type	Model	Call Sign	Avail	Start	Remarks
FA3AC3MM7E	3	Alta X	UR-31			PSD, IR / E0

Time Prepared
1900

Shutdown
Sunset

Helibase Information

Name: Garden Valley
Latitude: 44° 03.849'
Longitude: 115° 55.508'
Elevation: 3177'
Note: adjacent to Garden Valley Airport (U88)

Email costs to:
2024.middleforkcomplex.finance@fire.net.gov

Date Prepared
8/13/2024

Operational Period - Date
8/14/2024

TFR/NOTAM Information

All TFRs updated 8-11-2024
Buildog 4/6484
Freq 126.825, 11K msl, 24hrs.
Nellie 4/6485
Freq 123.6, 11K msl, 24hrs.
Wapiti 4/6486
Freq 120.125, 12.5K msl, 24hrs.
NOTAM
Warm Spgs Ck Airport (OU1) #08/120 runway closed, fire aircraft only, Aug. 10th thru Aug. 24th
<http://tr.faa.gov/tr2/list.html>

Prepared By
Jeff Polack - AOBD

Operational Period - Time
0700-2100

Extraction / Medivac (helicopter)

All air medivac requests will be requested and coordinated thru Boise (ID-BOF) Dispatch.
Short-Haul:
1) Teton Helilack, N35HX, West Mtn Complex, Cascade, ID airport
2) Krassel Short-Haul, N353SH, large fire support, McCall, ID airport

LOAN / LEASE HELICOPTERS (Cascade Helibase / West Mountain Complex)

FAA #	TYPE	Make/Model	Helibase	Avail	Start	Remarks
N767NA	1	Kaman/Kimax	Cascade	Y	8:30	Bucket
N563DJ	1	UH-60A	Cascade	Y	8:30	Bucket
N6996W	1	S-61A	Cascade	Y	8:30	Bucket
N357CR	1	UH-60A	Cascade	Y	8:30	Bucket

FIXED WING

FAA #	Type	Make/Model	Base	Avail	Start	Remarks

INCIDENT RADIO COMMUNICATIONS PLAN I-205

1. INCIDENT NAME	2. DATETIME PREPARED	3. OPERATIONAL PERIOD DATETIME
Middle Fork Complex BRANCH ONE	8/13/24 1500	8/14/24 0700 - 2100

4. BASIC RADIO CHANNEL UTILIZATION

Ch #	Function	Channel Name	Assignment	RX Freq	N/W	RX Tone/NAC	TX Freq	N/W	TX Tone/NAC	Mode Analog (A) Digital (D) Mixed (M)	Remarks
1	TAC	TAC 1	DIV D	168.0500	N	123.0	168.0500	N	123.0	A	BULLDOG
2	TAC	TAC 2	DIV P	168.2000	N	123.0	168.2000	N	123.0	A	NELLIE
3	TAC	TAC 3	DIV O	168.6000	N	123.0	168.6000	N	123.0	A	BULLDOG
4	TAC	TAC 4	DIV T	166.7250	N	123.0	166.7250	N	123.0	A	BULLDOG
5	TAC	TAC 5	UN	168.7750	N	123.0	168.7750	N	123.0	A	UNASSIGNED
6	TAC	TAC 6	UN	168.2500	N	123.0	168.2500	N	123.0	A	UNASSIGNED
7	COMMAND	CMD 7	BRANCH 2	168.0125	N	103.5	164.5750	N	103.5	A	S OF COPPER (BULL TROUT)
8	COMMAND	CMD 8	BRANCH 2	171.8500	N	103.5	162.8000	N	103.5	A	ZUMWALT MTN (WAPITI)
9	COMMAND	CMD 9	BRANCH 1	170.4500	N	123.0	168.1000	N	123.0	A	JACKSON LOOKOUT
10	COMMAND	CMD 10	BRANCH 1	169.5375	N	123.0	164.7125	N	123.0	A	SCOTT LOOKOUT
11	COMMAND	BOF NORTH REPEAT		171.4500	N	NONE	164.1625	N	156.7	A	BOF N REPEAT PACKER JOHN (TONE 7)
12	AG	A/G PRI		166.6000	N	NONE	166.6000	N	NONE	A	BRANCH 1 BULLDOG A/G PRIMARY
13	AG	A/G SEC		169.2000	N	NONE	169.2000	N	NONE	A	BRANCH 1 BULLDOG A/G SECONDARY
14	AG	A/G TER		170.0250	N	NONE	170.0250	N	NONE	A	BRANCH 1 NELLIE A/G TERTIARY
15	MEDEVAC A/G	ST COMM EMS		155.2800	N	NONE	155.2800	N	156.7	A	STATE COMM (EMS)
16	AIRGUARD	AIR GRD		168.6250	N		168.6250	N	110.9	A	EMERGENCY USE ONLY

5. Special Instructions:

6. I-205 Prepared By: Communications Unit Leader	Name: MIKE SCHERER	Signature: PAUL SCHERER
--	--------------------	-------------------------

Digitally signed by Paul Scherer
Date: 2024.08.13 15:49:21 -0700

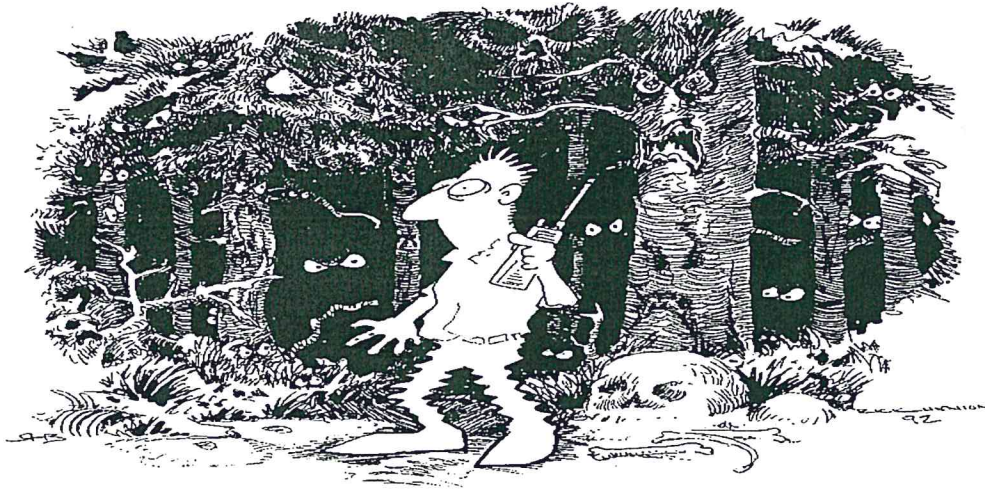
INCIDENT RADIO COMMUNICATIONS PLAN I-205		1. INCIDENT NAME		2. DATETIME PREPARED		3. OPERATIONAL PERIOD DATETIME					
		BRANCH TWO Wapiti/Bull Trout		8/13/24 1500		8/14/24 0700 - 2100					
4. BASIC RADIO CHANNEL UTILIZATION											
Ch #	Function	Channel Name	Assignment	RX Freq	N/W	RX Tone/NAC	TX Freq	N/W	TX Tone/NAC	Mode Analog (A) Digital (D) Mixed (M)	Remarks
1	TAC	TAC 1	DIV A	168.0500	N	103.5	168.0500	N	103.5	A	BULL TROUT
2	TAC	TAC 2	DIV V	168.2000	N	103.5	168.2000	N	103.5	A	WAPITI
3	TAC	TAC 3	DIV M	168.6000	N	103.5	168.6000	N	103.5	A	WAPITI
4	TAC	TAC 4	UN	166.7250	N	103.5	166.7250	N	103.5	A	UNASSIGNED
5	TAC	TAC 5	UN	168.7750	N	103.5	168.7750	N	103.5	A	UNASSIGNED
6	TAC	TAC 6	UN	168.2500	N	103.5	168.2500	N	103.5	A	UNASSIGNED
7	COMMAND	CMD 7	BRANCH 2	168.0125	N	103.5	164.5750	N	103.5	A	S OF COPPER (BULL TROUT)
8	COMMAND	CMD 8	BRANCH 2	171.8500	N	103.5	162.8000	N	103.5	A	ZUMWALT MTN (WAPITI)
9	COMMAND	CMD 9	BRANCH 1	170.4500	N	123.0	168.1000	N	123.0	A	JACKSON LOOKOUT
10	COMMAND	CMD 10	BRANCH 1	169.5375	N	123.0	164.7125	N	123.0	A	SCOTT LOOKOUT
11											
12	A/G	A/G PRI		168.3750	N	NONE	168.3750	N	NONE	A	BRANCH 2/WAPITI A/G PRIMARY
13	A/G	A/G SEC		172.4500	N	NONE	172.4500	N	NONE	A	BRANCH 2 WAPITI A/G SECONDARY
14	A/G	A/G TER		167.0750	N	NONE	167.0750	N	NONE	A	BRANCH 2 BULLTROUT A/G TERTIARY
15	MEDEVAC A/G	ST COMM EMS		155.2800	N	NONE	155.2800	N	156.7	A	STATE COMM (EMS)
16	AIRGUARD	AIRGUARD		168.6250	N		168.6250	N	110.9	A	EMERGENCY USE ONLY
5. Special Instructions:											
6. I-205 Prepared By: Communications Unit Leader			Name: MIKE SCHERER			Signature: PAUL SCHERER					
<small>Digitally signed by PAUL SCHERER Date: 2024.08.13 15:59:37 -0700</small>											



Safety Message

- Promote overall well-being by making sure you are eating proper and getting enough sleep. Continue personal hygiene to avoid any chance of getting camp crud or the pesky flu bug. Visit the medical folks early with any accident or health issues.
- Keep informed on daily assignments and objectives. Ask questions if you're not sure. Know what the contingency plan is!
- Communications make sure you have the right clone and check the frequencies when out on the line.
- Your safety record is doing great! Keep it up ...

WATCHOUT SITUATION



7. NO COMMUNICATION LINK WITH CREW MEMBERS/SUPERVISOR

**Team Safety Officers: Matt Nelson, Mike Cachero
Jonathan White**

Safety is your Responsibility!

Northern Rockies Complex Incident Management Team

MEDICAL PLAN (ICS 206 WF)

Controlled Unclassified Information//Basic

1. Incident/Project Name				2. Operational Period				
Middle Fork Complex				08/14/24 0700-2100				
3. Ambulance Services								
Name	Complete Address	Phone & EMS Frequency	Advanced Life Support (ALS) Yes No					
Lowman Emergency Services	8000 ID 21 Lowman ID 83637	911	<input type="checkbox"/>	<input checked="" type="checkbox"/>				
Garden Valley Fire Department	373 S Middle Fork Rd, Garden Valley ID 83622	911	<input checked="" type="checkbox"/>	<input type="checkbox"/>				
4. Air Ambulance Services								
Name	Contact	Type of Aircraft & Capability						
35HX (Teton) at Cascade Helibase 1469 Main St, Cascade, ID 83611	Boise Dispatch 208-384-3398	AS350B3e; Short-haul, BLS Medevac, Hospital Transport, Day Only						
3SH (Krassel) at McCall Helibase 605 S. Mission St., McCall, Idaho 83638	Payette Dispatch 208-425-8613	AS350B3e; Short-haul, Medevac, Hospital Transport, Day Only						
Life Flight Inc.	(800) 232-0911	Bell 407, ALS, Night Capable						
Air St. Lukes	(208) 381-8900	Bell 429, ALS, Night Capable, Fixed Wing						
5. Hospitals								
Name Complete Address	GPS Datum – WGS 84 Degrees Decimal Minutes DD° MM.MMM' N – Lat DD° MM.MMM' W - Long		Travel Time		Phone	Helipad		Level of Care
	Lat:		Air	Gnd		Yes	No	
Garden Valley Family Medicine 856 Banks Lowman Road Garden Valley, ID 83622	44° 03.75'	15 MIN	1 HRS	Direct Line 208-462-3533	<input checked="" type="checkbox"/>	<input type="checkbox"/>	Family Medical Clinic ("Old Clinic LZ" for air transport)	
St. Alphonsus Hospital 1055 N Curtis Rd Boise, ID 83706	43° 36.79'	45 MIN	3.5 HRS	ER Desk 208-367-3223, EMS report 208-367-6479	<input checked="" type="checkbox"/>	<input type="checkbox"/>	Level II Trauma	
	Long: -115° 55.39'							
	VHF: F2, Boise Dispatch	FAA# ID91						
St. Luke's Medical Center 190 E. Bannock St. Boise, ID 83712	43° 36.7678	45 MIN	3.5 HRS	208-381-2222	<input checked="" type="checkbox"/>	<input type="checkbox"/>	Critical Care Hospital	
	Long: -116° 11.51'							
	VHF: F2, Boise Dispatch	FAA# ID49						
EIRMC Burn Center 3100 Channing Way Idaho Falls, ID 83404	43° 29.4'	2 HRS	5 HRS	Direct Line 208-529-7986	<input checked="" type="checkbox"/>	<input type="checkbox"/>	Level III/ Burn Center	
	Long: -112° 1.8'							
	VHF:	FAA# ID18						
University of Utah 50 Medical Dr N Salt Lake City, UT 84132	40° 46.32	3 HRS	6 HRS	(801) 581-2241	<input checked="" type="checkbox"/>	<input type="checkbox"/>	Level I / Burn Center	
	Long: -111° 50.30'							
	VHF:	FAA# UT21						
Division Branch Group		Area Location Capability						
ICP Garden Valley Center 1219 Banks Lowman Rd Garden Valley, ID 83622		EMS Responders & Capability:		Rosemary Myers, AEMT/MEDL BLS, Steven Kendley, EMTF/MEDLt Emily Nemore, EMTF/MEDLt				
		Equipment Available on Scene:		IV, AED, O2				
7. Name & Location		Remote Camp Location Warm Springs Air Strip Rd						
FOB Warm Spring Air Strip Warm Springs ID 83637		EMS Responders & Capability:		Andrea Colson, EMTF/MEDL, Ray Mines EMTF/MEDLt, Ryan Jones, EMP/MEDLt ,ALS Meds				
		Equipment Available on Scene:		AED				
8. Prepared By (Medical Unit Leader)		Date/Time		10. Reviewed By (Safety Officer)		11. Date/Time		
/S/ Rosemary Myers		08/13/24 1613		/S/ JONATHAN WHITE		08/13/24 1815		

ID-BOF Middle Fork Complex, Wapiti and Bull Trout Fires Initial Attack Responsibility and Procedures

The following applies to all IA responses:

- Relay the initial coordinates and size up information (if applicable) to the Incident's Communications Unit.
- The Communications Unit will take the coordinates to the Situation Unit to plot and determine if the new start is in/out of the IA responsibility area.
- The Communications Unit will notify Planning Operations of the potential new IA.
- If requested, the Planning Operations will update the jurisdictional Duty Officer.
- Incident Communications Unit will notify the jurisdictional dispatch office of the new start, to provide an initial size-up and inform the jurisdictional dispatch of the resources responding.
- In all cases, IA will be documented using the appropriate Incident Organizer and be given to the local agency representative upon arrival on scene, in camp or sent to the respective jurisdictional dispatch center.
- Air resources obtaining size up information must communicate that on the Air to Ground frequency due to other incidents in the area and potential of crossing over. Ground resources will deliver size up information to the Communications Unit on Command frequency.

Fires within the IA Responsibility Area:

- All communications will be handled through the Incident's Communications Unit.
- The initial size up will be relayed to Line Operations, who will send appropriate identified resources.
- All requests for additional resources must be approved by Line Operations.
- Northern Rockies CIM Team 5 will manage the fire until it is suppressed completely, turned over to local resources, or the agency administrator makes a different decision regarding its management.
- If the jurisdictional dispatch office identifies a potential new start within the delegated incident IA response area, dispatch will notify the Incident's Communications Unit and all above procedures will be implemented.

Fires outside the IA Responsibility Area:

- The respective jurisdictional dispatch office will dispatch resources to the fire per dispatch procedures unless otherwise requested by the Duty Officer for the jurisdictional Agency.
- The jurisdictional duty officer may request team resources (aviation or ground) through the Incident's Communications Unit as approved by Line Operations.
- If incident's resources are utilized, and arrive on-scene first, they will provide a size up to the incident Communications Unit. The Communications Unit will, in turn, provide intel/information to the jurisdictional dispatch center.
- The jurisdictional dispatch office will provide the Air-to-Air frequency to all dispatched aviation resources to communicate with Air Attack.
- Jurisdictional responding ground resources will be given the frequencies to the appropriate fire incident (Middle Fork Complex, Wapiti and/or Bull Trout), to provide positive communications with all resources responding.
- Aviation resources may go direct to the jurisdictional dispatch office for their notification and size up but must also notify the Incident's Communications Unit, in coordination with the incident Air Attack.

Resource Advisor Message

Middle Fork Complex



Middle Fork Bull Trout

The bull trout in the Middle Fork Payette (MFP) drainage are listed as threatened under the Endangered Species Act. This means that bull trout are one step away from becoming an endangered species. The bull trout population in the MFP is a resident population. This means that they do not migrate; however, they do move around locally. They can utilize small water ways and lower, warmer waters temporarily for foraging at certain times of year. This strategy is like us: if you're local grocery doesn't have what you need, you drive across town. Most fish species do something similar. This life strategy is important to the recovery of bull trout because if there is a large disturbance (i.e. fire), they will respond by moving to a less disturbed area. This is why it's important to keep their habitat clean and free of human disturbance as much as possible. Over the next few shifts, we will be outlining ways you can help protect these threatened fish, and reduce the chance of fire related activity degrading their habitat:

Pump/Draft Sites:

- Keep all fuel and pumps inside spill containment with the walls propped up.
- Replace soiled or torn absorbent pads.
- Direct pumping overflow/runoff away from the steam.
- Store fuel on a level, secure surface.
- Use a fish screen!

Questions? Please contact any of the Resource Advisors.

MIDDLE FORK COMPLEX INCIDENT

CHECK-IN PROCESS

Please use the following steps to check-in to the Middle Fork Complex:

1. Fill out and submit the online check-in form. Use your resource order to help you fill out the form
2. Email the following documents to 2024.middleforkcomplex.finance@firenet.gov:
 - Manifest (crews and engines)
 - Resource order (crews, equipment, and overhead)
 - Red cards (crews, equipment, and overhead)
 - Casual hire form (A.D. resources)
 - Contractor agreement (pgs. 1-3)
3. If you need assistance, please call. 208-891-7380



<https://forms.office.com/g/HDb8gvBgFw>

DEMOBILIZATION CHECK-OUT PROCESS

The MIDDLE FORK COMPLEX is using the following virtual checkout process for demobilization. **Please do not leave the incident until the follow steps have been completed!**

1. **72 hours prior** to demobilization date, please ensure that:
 - Your incident supervisor has submitted a Demob Request, in coordination with the Demob unit.
 - If you need a flight arranged for you, please submit a [Flight Request Form](#).
2. **On your demob date**, please check out with the following units. Each unit will release you through an electronic process that is monitored, rather than a paper ICS-221.
 - Supply Unit – Return gear and supplies.
 - Ground Support – Return pool NERV rentals, receive inspections, etc.
 - Communications Unit – Return Radios and other communications equipment.
 - Time/Finance – Ensure that all CTRs and/or shift tickets have been submitted and **you have received your final, signed OF-288 Time Report or OF-286 invoice.**
3. **Once you have completed the above steps**, please fill out the Demob Release Form. **THIS IS THE LAST STEP OF THE DEMOB PROCESS. PLEASE DO NOT FILL THIS FORM OUT UNTIL ALL PRIOR STEPS ARE COMPLETE!**



[Flight Request Form](#)



[Demob Release Form](#)

Demob Unit Leader: Phone 208-891-7380
2024.middleforkcomplex.demob@firenet.gov

Tentative Demob List

ASSIGNED INCIDENT	REQUEST #	RESOURCE NAME	CODE	DEMOB DATE
-------------------	-----------	---------------	------	------------

Middle Fork complex	C-6	San Juan IHC	CRW1	8/15/2024
	C-9	Torres Contracting	CRW2	8/16/2024
	O-33.45	Shannon Rebinski	GISS	8/16/2024

Wapiti	E-92	ID-FHA Engine 441	ENG4	8/15/2024
	E-21	Blaze Runner	ENG4	8/15/2024
	O-14	Robert Hilfer	SOFR	8/15/2024
	O-33.52	Ryan LeBaron	EMPF	8/16/2024
	O-97	Anthony Amoroso	EMPF	8/16/2024

Bulltrout	O-11	Joel Welch	DIVS	8/15/2024
-----------	------	------------	------	-----------

HOURS of OPERATION

CATERER

Breakfast 0600 – 0900

Dinner 1800 – 2130

.....

SHOWERS

0530 – 1200

1400 – 2200

EMAIL CONTACTS

2024.middleforkcomplex.finance@firenet.gov
(208) 867-9570

2024.middleforkcomplex.demob@firenet.gov
(208) 891-7380

2024.middleforkcomplex.ordering@firenet.gov

INFORMATION

2024.middleforkcomplex@firenet.gov
(208) 992-3045



Human Resource Message

A SHORT COURSE IN HUMAN RELATIONS

The six most important words: **“I admit I made a mistake”**.

The five most important words: **“You did a good job”**.

The four most important words: **“What is your opinion”?**

The three most important words: **“If you please”**.

The two most important words: **“Thank you”**.

The one most important word: **“We”**

The least important word: **“I”**

Something to think about



Human Resource Specialists
Sherry Neal HRSP (801) 791-0044 remote

Finance Message



~Rupert the Finance Feline~

2024.middleforkcomplex.finance@firenet.gov

Finance Phone: (208) 867-9570

Welcome to the Middle Fork Complex, Wapiti, and Bulltrout Fires! You can find us in the yurt beneath the Jolly Roger. We are happy to answer your questions.

Will the following resources please pay us a visit:

- E-12, Dustbusters
- E-10, RowGo Construction
- E-11, Alpine Transport
 - E-87, Bull Creek



**Middlefork Complex, Wapiti
and Bulltrout Fires**



Fire Information: 208-992-3045

Email: 2024.middleforkcomplex@firenet.gov

Facebook: <https://www.facebook.com/BoiseNationalForest/>

InciWeb: <https://inciweb.wildfire.gov/incident-information/idbof-middle-fork-complex-fire-bulldog-nellie-anderson>

<https://inciweb.wildfire.gov/incident-information/idbof-bulltrout-fire>

<https://inciweb.wildfire.gov/incident-information/idbof-wapiti-fire>

We need photos to share all the great work you are accomplishing out there!

Examples: Crews and Equipment working, hazard tree mitigation, scenery, public access areas of interest (with full PPE).

Please email to 2024.middleforkcomplex@firenet.gov or visit a Public Information Officer in camp and include a brief description of the photo.

Lost and Found also located at Information Yurt at Middlefork Complex ICP

Thank You!

Middle
Fork
Complex
InciWeb



Wapiti
Fire
InciWeb



Bull Trout
Fire
InciWeb



Boise National
Forest
Facebook



Camp Conduct Expectations

We are glad to be here and look forward to working with you. The following are some of our expectations for all individuals assigned to this Incident.

TOP Priorities Include:

- **Provide for safety first**, then fight fire aggressively: Safety will be the responsibility of everyone on the Team. All of us will make safety our priority and ensure firefighter and public safety the top priority in every decision we make and every action we take. Success to this team starts first and foremost with bringing every person on this incident home safely each night. (Stop, Think, Talk then Act)
- **Service to the Host Agency:** We are committed to excellence in service to the Host Agency. We will do all we can individually and collectively to meet their direction and expectations.
- **Professionalism:** We are all professional people. We will conduct ourselves accordingly on this incident and adhere to agency policies. We will meet the intent of the work- rest guidelines.
- **Respect:** We will treat all individuals associated with the incident and affected by the incident with respect. We are the guest in this location, and we will act accordingly as we represent our respective agencies and organizations.

Camp Conduct Expectations:

- Alcohol and illegal drugs are prohibited in any workplace, including fire camp, spike camp and fire line.
- All individuals will follow the work-rest guidelines.
- Quiet hours are 2200 – 0600. Please be considerate of others.
- Fighting, verbal altercations, or harassment will not be tolerated.
- Disruptive and or illegal behavior will result in removal from the incident.
- Please keep your garbage picked up and disposed of in appropriate containers.

Thank you for your cooperation!

Rick Connell

Incident Commander



MIDDLE FORK Trainees REGISTER NOW



**DONT
WAIT!**

2024 Middle Fork Complex ID-BOF-000936

1. Complete Trainee Check In Form via QR Code
2. Go over expectations and goals with Trainer
3. Receive ink in Taskbook and 225 Performance Evaluation.
4. Submit Trainee Exit Interview via QR Code
5. Turn in copies of all incident related items to DOCL prior to Demob
6. TNSP Close Out Package will be emailed to Trainee

****Trainee Exit Interview is required to receive close out documentation****

**FOR MORE DETAILS
Contact RIST TNSP**

Brian Holmes

Brian Lamphiear

Name & Contact # for Person Placing Order:

ORDER # _____

Line Order

Date & Time Order Was Placed	Location and Time for Delivery (Div/LZ/DP/Lat Long)	Mode of Delivery (Ex: Driven/Helo/DIVS to pickup)
<input style="width: 100%; height: 100%;" type="text"/>		

#	Item	Quantity	#	Item	Quantity
1	Meals Breakfast		25	Drip Torch Mix 5gal Mix= 3 1/2gal Diesel : 1 gal Gas	
2	Meals Lunch		26	Line Spike Hygiene Kit	
3	Meals Dinner		27	Backpack Pump	
4	Meals MRE's/case		28	Folding Tank - Size: <input style="width: 50px;" type="text"/>	
5	Water 5 Gal Cubees		29	Pumpkin - Size: <input style="width: 50px;" type="text"/>	
6	Gatorade Case		30	Hose 1 1/2"	
7	Batteries AA Flat		31	Hose 1"	
8	Batteries Specify Type: <input style="width: 50px;" type="text"/>		32	Hose 3/4"	
9	Flagging Rolls		33	Reducer 1 1/2" X 1"	
10	Tarps/Plastic		34	Reducer 1" X 3/4"	
11	Parachute Cord		35	Gated Wye 1 1/2"	
12	Garbage Bags Box		36	Gated Wye 1"	
13	20 Person First Aid Kit		37	Gated Wye 3/4"	
14	Fuel (raw) Diesel 5 Gals		38	Shut Off Valve 3/4"	
15	Fuel (raw) Unleaded 5 Gals		39	In-Line Tee 1 1/2" X 1"	
16	Bar Oil 6 Pack		40	Nozzle 1 1/2" KK	
17	2-cycle oil/pumps Quarts		41	Nozzle 1" Forestry	
18	2-cycle oil/saws		42	Nozzle 3/4" Garden	
19	Tool Shovel		43	Chainsaw Kit	
20	Tool Pulaski		44	Mark 3 Pump w/ Kit (No Fuel) Control# _____	
21	Tool Combi		45	Lightweight Pump w/ Kit (No Fuel) Control# _____	
22	Tool Specify Type: <input style="width: 50px;" type="text"/>				
23	Fusee Case		46	Sprinkler Kit	
24	Drip Torch		47	MISC	

Order Received in Supply by (name):	Time:
Order Received in Transportation by (name):	Time:
Order Received in Helibase by(name):	Time:
Order Shipped to Line Unit by (name):	Time:

Clear / Reset

Print

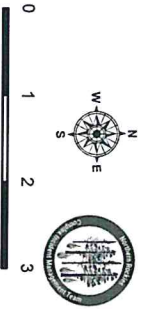
Save &/or Submit

Incident Action Plan

MIDDLE FORK COMPLEX
 ID-BOF-000936
 8/14/2024 Day

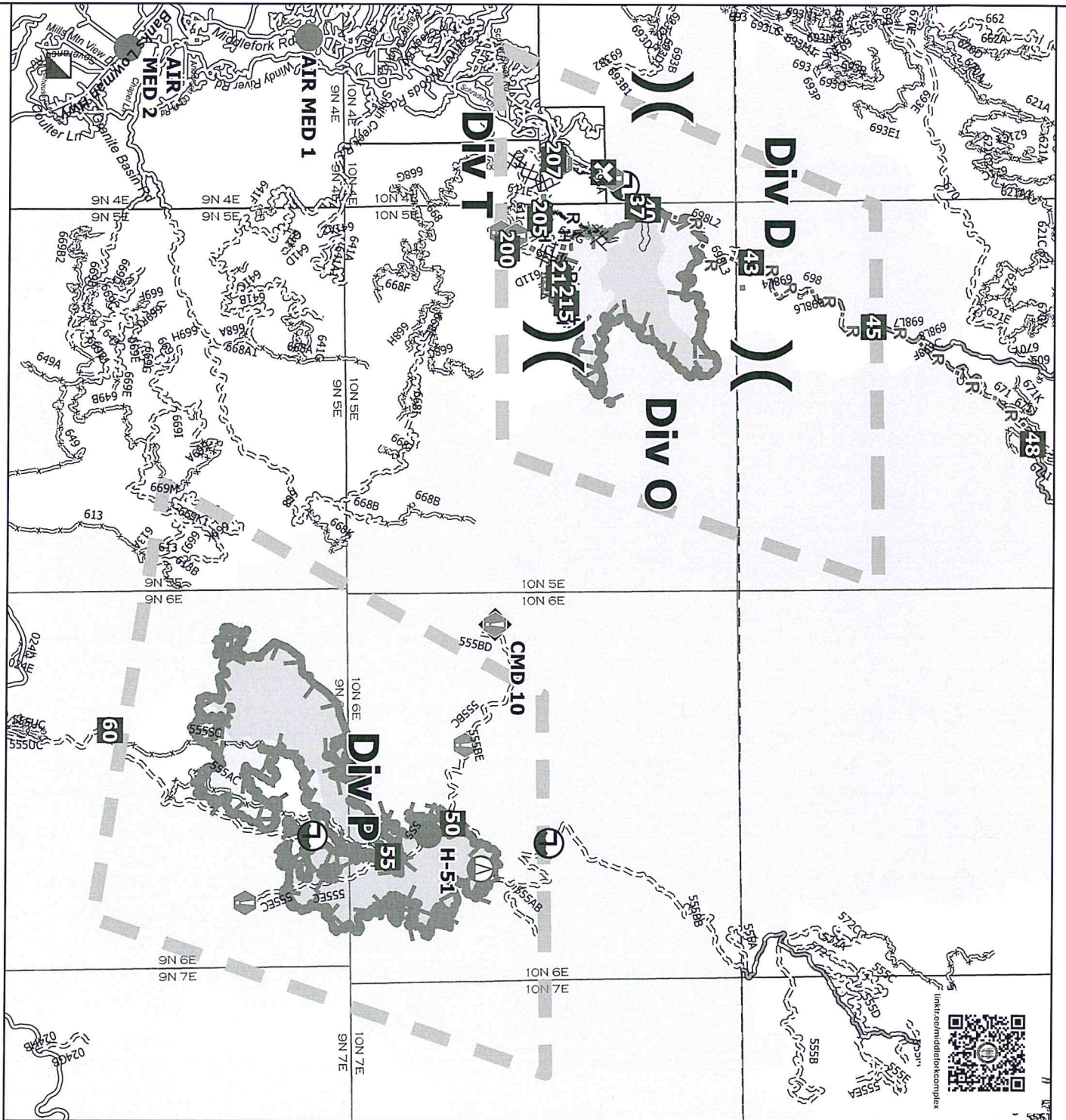
7701 acres at 8/13/2024 0220hr

●	Helispot
○	Sling Site
X	Division Break
■	Incident Command Post
■	Drop Point
■	Closure
M	Camp
⊕	Value at Risk
⊕	Gate
⊕	Road Repair
⊕	Repair Point
⊕	Culvert
⊕	Repeater
⊕	Hazard
⊕	Draft Site
⊕	Completed Dozer Line
⊕	Completed Hand Line
R-	Completed Road as Line
M	Planned Dozer Line
M	Planned Mixed Construction Line
R	Planned Road as Line
---	Proposed Line
---	Access Route
---	Temporary Flight Restriction
---	Uncontaminated
---	Wildfire Daily Fire Perimeter
---	Road
---	Road, High Clearance
---	Road, Closed
---	Road, Paved
---	Road, Dirt/Gravel
---	Road, High clearance
---	FS Closed Road
---	USFS Roadless Areas



0 1 2 3
Miles

1:135,000 | mcaey | 8/13/2024 1536
 North American 1983 Datum, LatLong Grid



Incident Action Plan

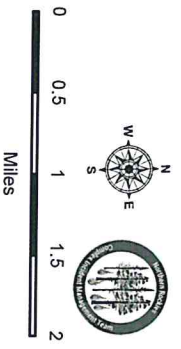
WAPITI

ID-BOF-000683

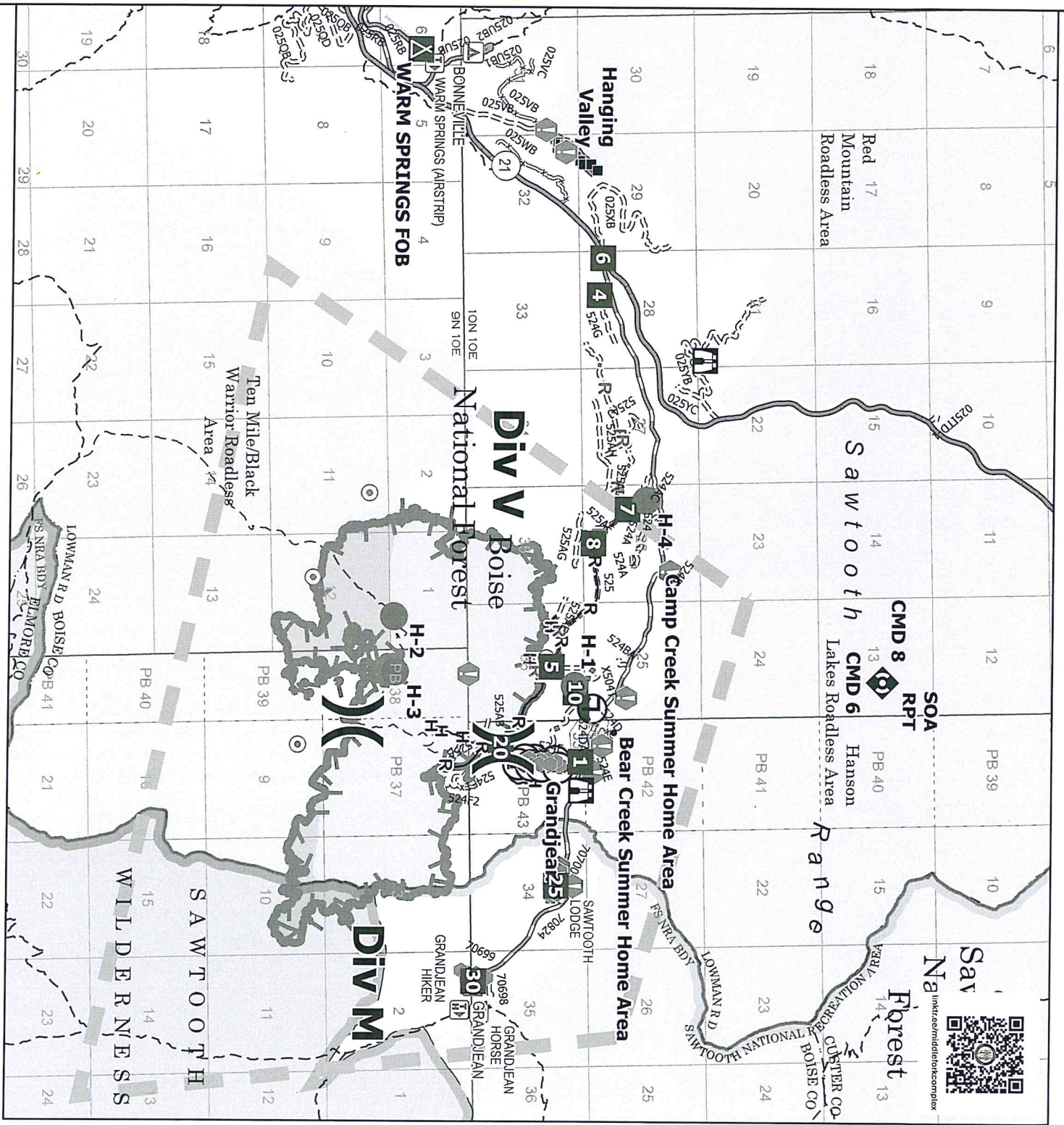
8/14/2024 Day

3104 acres at 8/12/2024 2207 hr

■	Structure
●	Helispot
X	Division Break
■	Drop Point
■	Camp
□	Lookout
⊕	Hot Spot - Spot Fire
⊕	Value at Risk
●	Other
⌒	Bridge
⊕	Stream Crossing
⊕	Repeater
⊕	Draft Site
⊕	Hydrant
H-	Completed Hand Line
R-	Completed Road as Line
H	Planned Hand Line
R	Proposed Road as Line
—	Access Route
—	Temporary Flight Restriction
—	Uncontaminated
—	Wildfire Daily Fire Perimeter
—	Secondary Highway
—	Road, Dirt/Gravel
—	Road, Dirt/Gravel
—	Road, high clearance
—	FS Closed Road
—	USFS Roadless Area
—	FS Wilderness Boundary
—	Other Designated Boundary



1:75,000 | mearey | 8/13/2024 1535
North American 1983 Datum, LatLong Grid

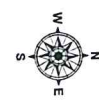


Incident Action Plan

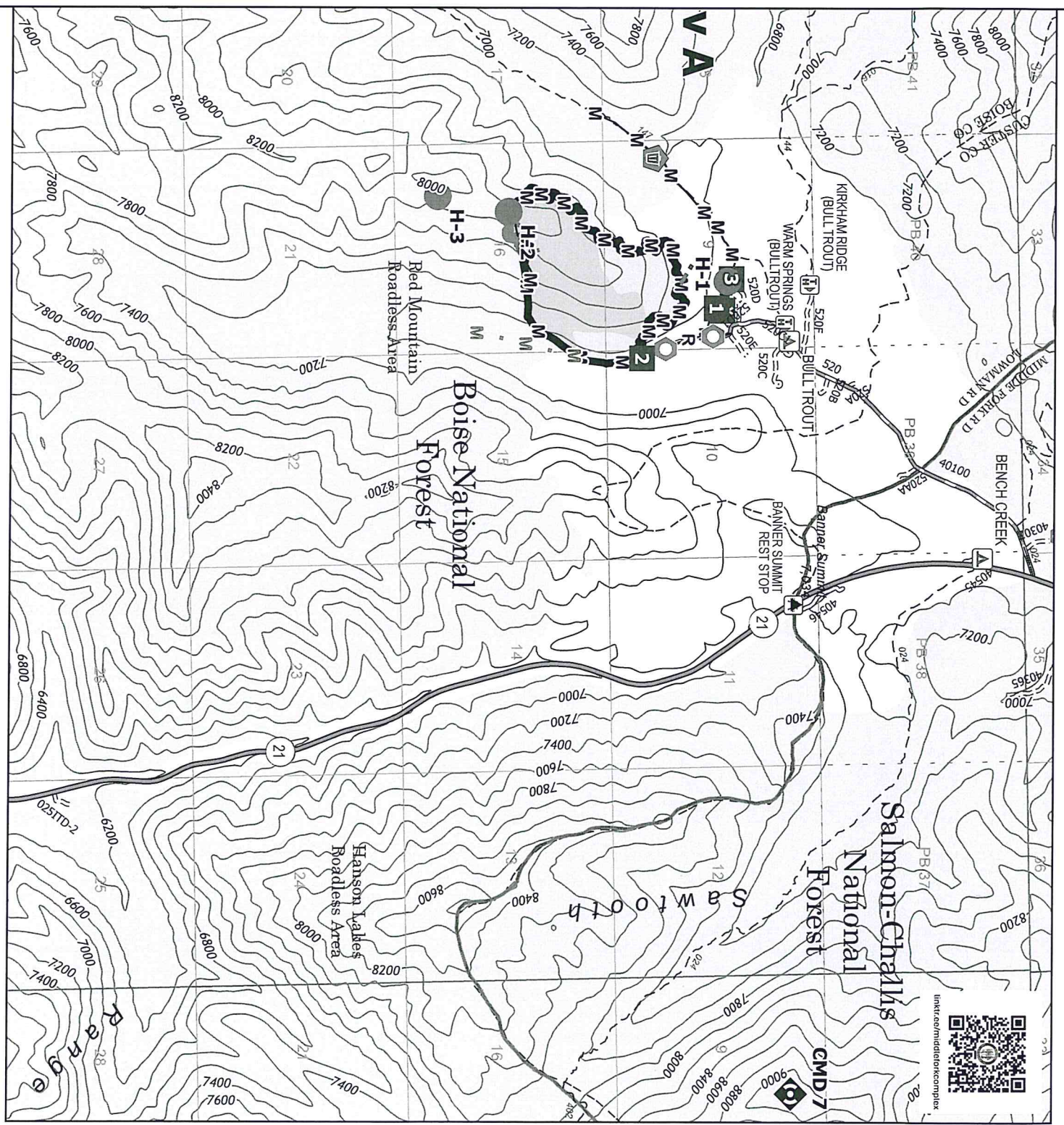
BULLTROUT
ID-BOF-000699
8/14/2024 Day

271 acres at 8/12/2024 2213 hr

●	Helispot
■	Drop Point
■	Camp
○	Value at Risk
○	Landmark
○	Clean Up Area
⚡	Repeater
—	Completed Mixed Construction Line
—	Completed Road as Line
—	Planned Mixed Construction Line
—	Other
■	Contained
■	Uncontained
—	Wildfire Daily Fire Perimeter
—	Secondary Highway
—	Road, Paved
—	Road, Dirt/Gravel
—	Road, high clearance
—	USFS Roadless Areas



1:42,000 | mearey | 8/13/2024 1537
North American 1983 Datum, Lat/Long Grid



GREAT BASIN CONSUMABLE CHAINSAW PARTS LIST

PART	034/341	360/MS1360	MS361	MS362	038/381	044/MS440	MS441	460/MS461	MS462	MS5001	0640/650	MS660	MS880
Spark Plug (NFESH 000344)	Bosch WSR6F NGK BPMR7A Champion RCJ6Y	Bosch WSR6F NGK BPMR7A Champion RCJ6Y	Bosch WSR6F NGK BPMR7A Champion RCJ6Y	Bosch WSR6F NGK BPMR7A Champion RCJ6Y	Bosch WSR6F NGK BPMR7A Champion RCJ6Y	Bosch WSR6F NGK BPMR7A Champion RCJ6Y	Bosch WSR6F NGK BPMR7A Champion RCJ6Y	Bosch WSR6F NGK BPMR7A Champion RCJ6Y	Bosch WSR6F NGK BPMR7A Champion RCJ6Y	Bosch WSR6F NGK BPMR7A Champion RCJ6Y	Bosch WSR6F NGK BPMR7A Champion RCJ6Y	Bosch WSR6F NGK BPMR7A Champion RCJ6Y	Bosch WSR6F NGK BPMR7A Champion RCJ6Y
Needle Cage Bearing (NFESH 066565)	9512-933-2380 9460-624-0801 0000-958-1022 1125-007-1040	9512-933-2380 9460-624-0801 0000-958-1022 1125-007-1223	9512-933-2380 9460-624-0801 0000-958-1022 1125-007-1000	9512-933-2380 9460-624-0801 0000-958-1022 1125-007-1000	9512-933-2380 9460-624-0801 0000-958-1022 1125-007-1000	9512-933-2380 9460-624-0801 0000-958-1022 1125-007-1000	9512-933-2380 9460-624-0801 0000-958-1022 1125-007-1000	9512-933-2380 9460-624-0801 0000-958-1022 1125-007-1000	9512-933-2380 9460-624-0801 0000-958-1022 1125-007-1000	9512-933-2382 9460-624-0801 0000-958-1032 1122-007-1017	9512-933-2382 9460-624-0801 0000-958-1032 1122-007-1000	9512-933-2382 9460-624-0801 0000-958-1032 1122-007-1000	9512-933-3170 9460-624-1001 0000-958-1236 N/A
Rim Sprocket 3/8" - 7T (NFESH 06665)	0000-642-1231 N/A	0000-642-1023 N/A	0000-642-1223 1128-007-1001	0000-642-1223 1128-007-1001	0000-642-1223 1128-007-1001	0000-642-1223 1128-007-1001	0000-642-1223 1128-007-1001	0000-642-1223 1128-007-1001	0000-642-1223 1128-007-1001	0000-642-1223 1128-007-1001	0000-642-1223 1122-007-1001	0000-642-1223 1122-007-1001	0000-642-1223 1124-007-1025
Rim sprocket KIT 3/8" - 8T Clutch Drum	N/A	N/A	N/A	N/A	N/A	N/A	N/A	N/A	N/A	N/A	N/A	N/A	N/A
Rim Sprocket 3/8" - 8T Clutch Drum	N/A	N/A	N/A	N/A	N/A	N/A	N/A	N/A	N/A	N/A	N/A	N/A	N/A
Clutch	1127-160-2050 1125-007-1036	0000-642-1216 1128-160-2004 1125-007-1021	0000-642-1216 1128-160-2004 1125-007-1021	0000-642-1216 1128-160-2004 1125-007-1021	0000-642-1216 1128-160-2004 1125-007-1021	0000-642-1216 1128-160-2004 1125-007-1021	0000-642-1216 1128-160-2004 1125-007-1021	0000-642-1216 1128-160-2004 1125-007-1021	0000-642-1216 1128-160-2004 1125-007-1021	0000-642-1216 1128-160-2004 1125-007-1021	0000-642-1216 1128-160-2004 1125-007-1021	0000-642-1216 1128-160-2004 1125-007-1021	0000-642-1216 1128-160-2004 1125-007-1021
Chain Adjuster Kit / Spur Gear	1121-648-6610 1128-190-3400 1125-640-7110 1125-141-2200 0000-350-3504	1121-648-6610 1128-190-3400 1125-640-7110 1125-141-2200 0000-350-3504	1121-648-6610 1128-190-3400 1125-640-7110 1125-141-2200 0000-350-3504	1121-648-6610 1128-190-3400 1125-640-7110 1125-141-2200 0000-350-3504	1121-648-6610 1128-190-3400 1125-640-7110 1125-141-2200 0000-350-3504	1121-648-6610 1128-190-3400 1125-640-7110 1125-141-2200 0000-350-3504	1121-648-6610 1128-190-3400 1125-640-7110 1125-141-2200 0000-350-3504	1121-648-6610 1128-190-3400 1125-640-7110 1125-141-2200 0000-350-3504	1121-648-6610 1128-190-3400 1125-640-7110 1125-141-2200 0000-350-3504	1121-648-6610 1128-190-3400 1125-640-7110 1125-141-2200 0000-350-3504	1121-648-6610 1128-190-3400 1125-640-7110 1125-141-2200 0000-350-3504	1121-648-6610 1128-190-3400 1125-640-7110 1125-141-2200 0000-350-3504	1121-648-6610 1128-190-3400 1125-640-7110 1125-141-2200 0000-350-3504
Bump Strip	1122-664-1000 1128-190-3400	1122-664-1000 1128-190-3400	1122-664-1000 1128-190-3400	1122-664-1000 1128-190-3400	1122-664-1000 1128-190-3400	1122-664-1000 1128-190-3400	1122-664-1000 1128-190-3400	1122-664-1000 1128-190-3400	1122-664-1000 1128-190-3400	1122-664-1000 1128-190-3400	1122-664-1000 1128-190-3400	1122-664-1000 1128-190-3400	1122-664-1000 1128-190-3400
Starter Rope w/handle	1125-640-7110	1125-640-7110	1125-640-7110	1125-640-7110	1125-640-7110	1125-640-7110	1125-640-7110	1125-640-7110	1125-640-7110	1125-640-7110	1125-640-7110	1125-640-7110	1125-640-7110
Worm Gear (Oiler)	1125-141-2200	1125-141-2200	1125-141-2200	1125-141-2200	1125-141-2200	1125-141-2200	1125-141-2200	1125-141-2200	1125-141-2200	1125-141-2200	1125-141-2200	1125-141-2200	1125-141-2200
Manifold Boot	0000-350-3504	0000-350-3504	0000-350-3504	0000-350-3504	0000-350-3504	0000-350-3504	0000-350-3504	0000-350-3504	0000-350-3504	0000-350-3504	0000-350-3504	0000-350-3504	0000-350-3504
Fuel Filter / Pickup Body	N/A	N/A	N/A	N/A	N/A	N/A	N/A	N/A	N/A	N/A	N/A	N/A	N/A
Cap (for Fuel Injection Pump)	1122-664-1000	1122-664-1000	1122-664-1000	1122-664-1000	1122-664-1000	1122-664-1000	1122-664-1000	1122-664-1000	1122-664-1000	1122-664-1000	1122-664-1000	1122-664-1000	1122-664-1000
Inner Side Plate	0000-955-0801	0000-955-0801	0000-955-0801	0000-955-0801	0000-955-0801	0000-955-0801	0000-955-0801	0000-955-0801	0000-955-0801	0000-955-0801	0000-955-0801	0000-955-0801	0000-955-0801
Bar Nut / collar Nut (NFESH 06661)	1125-120-1626	1125-120-1626	1125-120-1626	1125-120-1626	1125-120-1626	1125-120-1626	1125-120-1626	1125-120-1626	1125-120-1626	1125-120-1626	1125-120-1626	1125-120-1626	1125-120-1626
Air Filter - HD (NFESH 066756)	1125-120-1626	1125-120-1626	1125-120-1626	1125-120-1626	1125-120-1626	1125-120-1626	1125-120-1626	1125-120-1626	1125-120-1626	1125-120-1626	1125-120-1626	1125-120-1626	1125-120-1626
Pre Filter - OEM MaxFlow Air Filter	N/A	N/A	N/A	N/A	N/A	N/A	N/A	N/A	N/A	N/A	N/A	N/A	N/A
Filter Oil	N/A	N/A	N/A	N/A	N/A	N/A	N/A	N/A	N/A	N/A	N/A	N/A	N/A
Filter Cleaner	N/A	N/A	N/A	N/A	N/A	N/A	N/A	N/A	N/A	N/A	N/A	N/A	N/A
Bearing Grease - Tube	N/A	N/A	N/A	N/A	N/A	N/A	N/A	N/A	N/A	N/A	N/A	N/A	N/A
Bar Oil - Gallon (NFESH 1880)	N/A	N/A	N/A	N/A	N/A	N/A	N/A	N/A	N/A	N/A	N/A	N/A	N/A
Bar Oil - Quart (NFESH 1869)	N/A	N/A	N/A	N/A	N/A	N/A	N/A	N/A	N/A	N/A	N/A	N/A	N/A
Bar Oil - Quart (NFESH 0341)	N/A	N/A	N/A	N/A	N/A	N/A	N/A	N/A	N/A	N/A	N/A	N/A	N/A
2 Cycle Oil - STIHL HD	N/A	N/A	N/A	N/A	N/A	N/A	N/A	N/A	N/A	N/A	N/A	N/A	N/A
Non-Ethanol Fuel	N/A	N/A	N/A	N/A	N/A	N/A	N/A	N/A	N/A	N/A	N/A	N/A	N/A
Felling Wedges	N/A	N/A	N/A	N/A	N/A	N/A	N/A	N/A	N/A	N/A	N/A	N/A	N/A
6" Pocket - (NFESH 0515)	N/A	N/A	N/A	N/A	N/A	N/A	N/A	N/A	N/A	N/A	N/A	N/A	N/A
8" Smooth - (NFESH 0884)	N/A	N/A	N/A	N/A	N/A	N/A	N/A	N/A	N/A	N/A	N/A	N/A	N/A
8" Bliffed - (NFESH 0516)	N/A	N/A	N/A	N/A	N/A	N/A	N/A	N/A	N/A	N/A	N/A	N/A	N/A
12" - (NFESH 02725)	N/A	N/A	N/A	N/A	N/A	N/A	N/A	N/A	N/A	N/A	N/A	N/A	N/A
Round File - 7/32" (NFESH 0345) or 13/64"	N/A	N/A	N/A	N/A	N/A	N/A	N/A	N/A	N/A	N/A	N/A	N/A	N/A
Raker File - 8" Flat File	N/A	N/A	N/A	N/A	N/A	N/A	N/A	N/A	N/A	N/A	N/A	N/A	N/A
Scrench - Combo Wrench (NFESH 0875)	N/A	N/A	N/A	N/A	N/A	N/A	N/A	N/A	N/A	N/A	N/A	N/A	N/A
Chain STIHL Rapid-Super (RS) - 3/8" PITCH - .050" GAUGE	3623-005-0072 3623-005-0084 3623-005-0091 3623-005-0091	3623-005-0072 3623-005-0084 3623-005-0091 3623-005-0091	3623-005-0072 3623-005-0084 3623-005-0091 3623-005-0091	3623-005-0072 3623-005-0084 3623-005-0091 3623-005-0091	3623-005-0072 3623-005-0084 3623-005-0091 3623-005-0091	3623-005-0072 3623-005-0084 3623-005-0091 3623-005-0091	3623-005-0072 3623-005-0084 3623-005-0091 3623-005-0091	3623-005-0072 3623-005-0084 3623-005-0091 3623-005-0091	3623-005-0072 3623-005-0084 3623-005-0091 3623-005-0091	3623-005-0072 3623-005-0084 3623-005-0091 3623-005-0091	3623-005-0072 3623-005-0084 3623-005-0091 3623-005-0091	3623-005-0072 3623-005-0084 3623-005-0091 3623-005-0091	3623-005-0072 3623-005-0084 3623-005-0091 3623-005-0091
20" - 72 DR	N/A	N/A	N/A	N/A	N/A	N/A	N/A	N/A	N/A	N/A	N/A	N/A	N/A
25" - 84 DR (NFESH 066500)	N/A	N/A	N/A	N/A	N/A	N/A	N/A	N/A	N/A	N/A	N/A	N/A	N/A
28" - 91 DR	N/A	N/A	N/A	N/A	N/A	N/A	N/A	N/A	N/A	N/A	N/A	N/A	N/A
32" - 105 DR	N/A	N/A	N/A	N/A	N/A	N/A	N/A	N/A	N/A	N/A	N/A	N/A	N/A
Chain STIHL Rapid-Super-Full Skip (RSF) - 3/8" PITCH - .050" GAUGE	3676-005-0072 3676-005-0084 3676-005-0091 3676-005-0091	3676-005-0072 3676-005-0084 3676-005-0091 3676-005-0091	3676-005-0072 3676-005-0084 3676-005-0091 3676-005-0091	3676-005-0072 3676-005-0084 3676-005-0091 3676-005-0091	3676-005-0072 3676-005-0084 3676-005-0091 3676-005-0091	3676-005-0072 3676-005-0084 3676-005-0091 3676-005-0091	3676-005-0072 3676-005-0084 3676-005-0091 3676-005-0091	3676-005-0072 3676-005-0084 3676-005-0091 3676-005-0091	3676-005-0072 3676-005-0084 3676-005-0091 3676-005-0091	3676-005-0072 3676-005-0084 3676-005-0091 3676-005-0091	3676-005-0072 3676-005-0084 3676-005-0091 3676-005-0091	3676-005-0072 3676-005-0084 3676-005-0091 3676-005-0091	3676-005-0072 3676-005-0084 3676-005-0091 3676-005-0091
20" - 72 DR	N/A	N/A	N/A	N/A	N/A	N/A	N/A	N/A	N/A	N/A	N/A	N/A	N/A
25" - 84 DR	N/A	N/A	N/A	N/A	N/A	N/A	N/A	N/A	N/A	N/A	N/A	N/A	N/A
28" - 91 DR	N/A	N/A	N/A	N/A	N/A	N/A	N/A	N/A	N/A	N/A	N/A	N/A	N/A
32" - 105 DR	N/A	N/A	N/A	N/A	N/A	N/A	N/A	N/A	N/A	N/A	N/A	N/A	N/A
Guide Bars (STIHL ROLLOMATIC - ES) - 3/8" PITCH - .050" GAUGE	3003-000-8822 3003-000-8822	3003-000-8822 3003-000-8822	3003-000-8822 3003-000-8822	3003-000-8822 3003-000-8822	3003-000-8822 3003-000-8822	3003-000-8822 3003-000-8822	3003-000-8822 3003-000-8822	3003-000-8822 3003-000-8822	3003-000-8822 3003-000-8822	3003-000-8822 3003-000-8822	3003-000-8822 3003-000-8822	3003-000-8822 3003-000-8822	3003-000-8822 3003-000-8822
20" (NFESH 066584)	N/A	N/A	N/A	N/A	N/A	N/A	N/A	N/A	N/A	N/A	N/A	N/A	N/A
28"	N/A	N/A	N/A	N/A	N/A	N/A	N/A	N/A	N/A	N/A	N/A	N/A	N/A
32"	N/A	N/A	N/A	N/A	N/A	N/A	N/A	N/A	N/A	N/A	N/A	N/A	N/A

The items listed here are considered consumable. Replacement requests for these parts should be filled at the Incident Supply Unit or Local Cache and marked off. If the order is unable to be filled it should be sent to Ordering for \$# assignment and sent to a Buying Team or purchasing support for the incident acquisition, or provided to the requesting resource for fill at the home unit.

Items highlighted in gray should be fillable at most cache locations.

REQUESTING PARTY: If the items you are ordering are not listed above, an OF-296 (Property Loss/Damage Form) MAY be required. Be descriptive on your orders and fill the order form out completely!

MEDICAL PLAN (ICS 206 WF)

Controlled Unclassified Information//Basic

Medical Incident Report

FOR A NON-EMERGENCY INCIDENT, WORK THROUGH CHAIN OF COMMAND TO REPORT AND TRANSPORT INJURED PERSONNEL AS NECESSARY.

FOR A MEDICAL EMERGENCY: IDENTIFY ON SCENE INCIDENT COMMANDER BY NAME AND POSITION AND ANNOUNCE "MEDICAL EMERGENCY" TO INITIATE RESPONSE FROM IMT COMMUNICATIONS/DISPATCH.

Use the following items to communicate situation to communications/dispatch.

1. CONTACT COMMUNICATIONS / DISPATCH (Verify correct frequency prior to starting report)
Ex: "Communications, Div. Alpha. Stand-by for Emergency Traffic."
2. INCIDENT STATUS: Provide incident summary (including number of patients) and command structure.
Ex: "Communications, I have a Red priority patient, unconscious, struck by a falling tree. Requesting air ambulance to Forest Road 1 at (Lat./Long.) This will be the Trout Meadow Medical, IC is TFLD Jones. EMT Smith is providing medical care."

Severity of Emergency / Transport Priority	<input type="checkbox"/> RED / PRIORITY 1 Life or limb threatening injury or illness. Evacuation need is IMMEDIATE Ex: Unconscious, difficulty breathing, bleeding severely, 2 ^o – 3 ^o burns more than 4 palm sizes, heat stroke, disoriented. <input type="checkbox"/> YELLOW / PRIORITY 2 Serious Injury or illness. Evacuation may be DELAYED if necessary. Ex: Significant trauma, unable to walk, 2 ^o – 3 ^o burns not more than 1-3 palm sizes. <input type="checkbox"/> GREEN / PRIORITY 3 Minor Injury or illness. Non-Emergency transport Ex: Sprains, strains, minor heat-related illness.	
Nature of Injury or Illness & Mechanism of Injury		Brief Summary of Injury or Illness (Ex: Unconscious, Struck by Falling Tree)
Transport Request		Air Ambulance / Short Haul/Hoist Ground Ambulance / Other
Patient Location		Descriptive Location & Lat. / Long. (WGS84)
Incident Name		Geographic Name + "Medical" (Ex: Trout Meadow Medical)
On-Scene Incident Commander		Name of on-scene IC of Incident within an Incident (Ex: TFLD Jones)
Patient Care		Name of Care Provider (Ex: EMT Smith)

3. INITIAL PATIENT ASSESSMENT: Complete this section for each patient as applicable (start with the most severe patient)

Patient Assessment: See IRPG page 106

Treatment:

4. TRANSPORT PLAN:

Evacuation Location (if different): (Descriptive Location (drop point, intersection, etc.) or Lat. / Long.) Patient's ETA to Evacuation Location:

Helispot / Extraction Site Size and Hazards:

5. ADDITIONAL RESOURCES / EQUIPMENT NEEDS:

Example: Paramedic/EMT, Crews, Immobilization Devices, AED, Oxygen, Trauma Bag, IV/Fluid(s), Splints, Rope rescue, Wheeled litter, HAZMAT, Extrication

6. COMMUNICATIONS: Identify State Air/Ground EMS Frequencies and Hospital Contacts as applicable

Function	Channel Name/Number	Receive (RX)	Tone/NAC *	Transmit (TX)	Tone/NAC *
COMMAND					
AIR-TO-GRND					
TACTICAL					

7. CONTINGENCY: Considerations: If primary options fail, what actions can be implemented in conjunction with primary evacuation method? Be thinking ahead.

8. ADDITIONAL INFORMATION: Updates/Changes, etc.

REMEMBER: Confirm ETA's of resources ordered. Act according to your level of training. Be Alert. Keep Calm. Think Clearly. Act Decisively