

# Incident Action Plan

## Middle Fork Complex Wapiti Bull Trout

Friday August 16, 2024

Operations 0700 - 2100



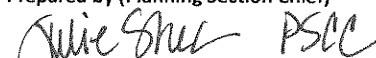

[linktr.ee/middleforkcomplex](https://linktr.ee/middleforkcomplex)

**Middle Fork Complex:** P4R5Y9 (0402) - ID-BOF-000936

**Wapiti:** P4R4VV (0402) - ID-BOF-000683

**Bull Trout:** P4R4U9 (0402) - ID-BOF-000699



<b>INCIDENT OBJECTIVES</b>	1. Incident Names <b>Middle Fork Complex, Wapiti and Bull Trout</b>	2. Date Prepared <b>August 15, 2024</b>	3. Time <b>2100</b>
4. Operational Period: <b>August 16 2024 Day Operations 0700 - 2100</b>			
<p><b>Incident Objectives</b></p> <ul style="list-style-type: none"> <li>Execute Strategies to protect the public within the fire planning area by providing timely notification of road, trail and area closures and evacuations to avoid injury or the loss of life.</li> <li>Reduce risk to incident responders by assessing and mitigating identified hazards whenever possible, and by only accepting residual risk to responders when protecting highly valued resources and assets when the probability of success is high.</li> <li>Utilize confine and point/zone protection strategies in all operational planning and implementation, providing for the highest probability of success and an acceptable level of residual risk to responders to avoid the loss of these highly valued assets.</li> </ul> <p><b>Incident Requirements</b></p> <ul style="list-style-type: none"> <li>Provide timely and accurate information to local communities, Boise and Sawtooth National Forests, partners, stakeholders and private landowners.</li> <li>Coordinate with Lead READ to protect all known cultural and historic sites from damage by suppression actions.</li> <li>Follow Idaho Roadless Area Rule guidance (2008), regarding appropriate suppression actions allowances/approval needs within roadless areas, in consultation with Boise NF lead Resource Advisor.</li> <li>Mitigate impacts to Threatened and Endangered species, including Bull trout and Whitebark pine, through coordination with Resource Advisors within the planning area.</li> <li>Prevent the spread of invasive aquatic species and noxious weeds by following the Boise National Forest resource mitigation guide, and through additional mitigations identified by Resource Advisors.</li> <li>Ensure coordination with Air Resource Advisor on smoke impacts to surrounding communities and incident responders.</li> </ul> <p><b>Course of Action</b></p> <ul style="list-style-type: none"> <li>Assess and implement confine and/or contain strategies, utilizing Management Action Points identified in the latest WFDSS decisions for Middle Fork Complex (Bulldog and Nellie), Wapiti and Bull Trout, to trigger when and where to consider additional actions and identify fire management resources necessary for actions.</li> <li>Utilize strategic risk analysis to weigh exposure of actions to fire management resource personnel.</li> </ul>			
8. <b>Attachments (X if attached)</b>			
X	ICS 203	X	Safety Message
X	Incident Weather Forecast	X	Initial Attack Responsibilities
X	Fire Behavior Forecast	X	GB Chainsaw Parts Order Form
X	ICS 204 Division Assignment Lists	X	Resource Advisor Message
X	ICS 220 Air Operations Summary	X	Demob Message & Tentative List
X	ICS 205 Incident Radio Comm Plan	X	Finance Message
			Human Resources Message
9. Prepared by (Planning Section Chief)	9. Approved by (Incident Commander)		
			

<b>ORGANIZATIONAL ASSIGNMENT LIST (ICS 203)</b>	1. Incident: <b>Middle Fork Complex; Wapiti; Bull Trout</b>	2. Date Prepared: 8/15/2024	
3. Time Prepared: 2000 hrs	4. Operational Period: <b>August 16, 2024 0700-2100</b> DAY Operations		
<b>5. Incident Commanders</b>		<b>9. Operations Section</b>	
Incident Commander	Rick Connell	Strategic Ops	Paul Diaz
Deputy Incident Commander	Craig Glazier	Planning Ops	Ashley Sites
Safety Officer	Matt Nelson; Mike Cachero; Jonathan White (T)		
Information Officer	Chris Ziegler	<b>a. Branch I</b>	
Liaison Officer	Bryan Donner	Branch Director	Kevin Smith; Ashton Ferruzzi (T)
<b>6. Agency Representatives</b>		Division D	Jessica Vincent; Sam Lewis (T)
Boise Forest Supervisor	Brant Petersen	Division O	unstaffed
Boise Forest Agency Administrator	Jason Kling; John Wallace (T)	Division P	Nick Peters; Troy Sanders (T)
Idaho Department of Lands	Dean Johnson	Division T	Mike Tuffelmire; Dustin Roper (T)
<b>6b. Cooperators</b>			
Boise County Sheriff	Scott Turner	<b>b. Branch II</b>	
Garden Valley RFD	Paul Cleveland	Branch Director	Adam Carr
<b>7. Planning Section</b>		Division A	Rob Spence
Chief	Mark Glos; Julie Shea	Division M	Dave Maclay-Schulte; Javier Kirker (T)
Resource Unit	Patty Bates; Matt Reed (T)	Division V	Dan Helterline; Charlie Fisher (T)
Demob Unit	Sue Puddy		
Situation Unit	Jason Willoughby; Brett Gore	<b>c. Air Operations Branch</b>	
GISS	Jeff Sprovkin; Mitch Carey (T); Marjorie Jerez	AOBD	Jeff Polack
Fire Behavior Branch I	Mike Pagoaga	ASGS	Steve Croy
Fire Behavior Branch II	Mike Locke		
Incident Meteorologist	Mike Seaman; Luke Rogers (T)	Helibase Mgr	
LTAN	Jon Rieck; Todd Erdody		
SOPL	Justin Pappani; Carolyn Warden (T)	<b>10. Finance Section</b>	
Lead READ	Matt Robinson	Chief	Biddy Simet; Wendy McCartney
Training Specialist	Brian Lamphiear (V)		
Human Resource Specialist	Sherry Neal (V)	Procurement	Tammy Peterson (T)
Air Resource Advisor	Adam Simmons; Amber Ortega		
ITSS	Michael Harper; Ryan Land (T); Victor Taus (T)	Time Unit Leader	Quoya Waters
<b>8. Logistics Section</b>		Personnel Time	Ashley Johnson; Victoria Davis; Haleigh Stott; Rhea Warren
Chief	Russell Riebe; Peter Pappas	Equipment Time	Karen Sargeant; Tamala Carter; Dawn Lint
Logistics – Warm Springs	Jon Kautt		
Supply Unit Leader	Meghan Carosella	Cost Unit	Terry Groesbeck (T)
Ordering Manager	Darcy Wheeler ( V)	Comp Unit	Quoya Waters
Medical Unit Leader	Rosemary Myers		
Communications	Mike Scherer; Bill Erhardt		
Food Unit	Justin Trodick (T)		
Facility Unit Leader	Pat Nelson		
Ground Support	Kyler McCarrel	Prepared by Resource Unit Leader:	
Security Manager	John Velsvaag	<i>Patty Bates &amp; Matt Reed</i>	



# Fire Weather FORECAST

IMET Contact - (816) 589-0168



FORECAST NO: 6  
PREDICTION FOR: 0700 FRI – 0700 SAT  
SHIFT DATE: FRIDAY August 16, 2024

FORECAST ISSUED: 08/15/2024 at 1900  
SIGNED: *Mike Seaman*  
Incident Meteorologist (Mike Seaman)

**WEATHER DISCUSSION:** Inversion conditions will be in place through early this afternoon, keeping RH elevated above 30% across all elevations while limiting ventilation. This inversion will lift around 1400, resulting in a decrease in RH and improved ventilation by 1600. Afternoon RH will trend 3-5% lower this afternoon from what was observed Thursday. Winds across the area will remain light and terrain driven through early afternoon, before a general west-southwesterly wind develops after 1400. The inversion will return tonight across elevations below 6500 feet, with a thermal belt likely developing above this elevation overnight.

FORECAST FOR TODAY:		
	MIDDLE FORK COMPLEX	WAPITI AND BULLTROUT FIRES
SKY/WEATHER	Partly cloudy early, then filtered sunshine.	Filtered sunshine. A few afternoon cumulus.
MAX TEMPERATURE	Low Elevation (3500 ft): 87-90° F Mid Elevation (4500 ft): 78-81° F High Elevation (7000 ft): 69-72° F	Low Elevation (5000 ft): 75-78° F Mid Elevation (6500 ft): 70-73° F High Elevation (8000 ft): 64-67° F
MIN RELATIVE HUMIDITY	Low Elevation (3500 ft): 20-23% Mid Elevation (4500 ft): 22-25% High Elevation (7000 ft): 26-29%	Low Elevation (5000 ft): 22-25% Mid Elevation (6500 ft): 26-29% High Elevation (8000 ft): 28-31%
GENERAL 20 FT WINDS	Slope/drainage 3-6 mph becoming west-southwest 4-8 mph after 1400. Ridgelines gusting 9-12 mph during the afternoon.	Slope/drainage 3-6 mph becoming west-southwest 5-9 after 1400. Ridgelines gusting 10-16 mph during the afternoon.
INVERSION	Lifting around 1400.	Lifting around 1400.
PM MIXING HEIGHT	13,000 ft MSL	14,500 ft MSL
PM TRANSPORT WIND	Southwest around 15 mph	Southwest around 15 mph
PRECIP CHANCE (CWR)	5% (CWR: 1%)	5% (CWR: 1%)
LIGHTNING CHANCE (LAL)	2% (LAL: 1)	2%. (LAL: 1)

FORECAST FOR TONIGHT:		
	MIDDLE FORK COMPLEX	WAPITI AND BULLTROUT FIRES
SKY/WEATHER	Mostly clear.	Mostly clear.
MIN TEMPERATURE	Low Elevation (3500 ft): 49-52° F Mid Elevation (4500 ft): 54-57° F High Elevation (7000 ft): 52-55° F	Low Elevation (5000 ft): 47-51° F Mid Elevation (6500 ft): 52-55° F High Elevation (8000 ft): 48-51° F
MAX RELATIVE HUMIDITY	Low Elevation (3500 ft): 50-65% High Elevation (4500 ft): 45-55% High Elevation (7000 ft): 40-50%	Low Elevation (5000 ft): 70-85% Mid Elevation (6500 ft): 40-50% High Elevation (8000 ft): 40-50%
GENERAL 20 FT WINDS	West 4-9 mph until 2000 then downslope / down-drainage 3-8 mph.	West 5-9 mph until 2000 then downslope / down-drainage 3-8 mph
INVERSION	Developing around 2000.	Developing below 6500 feet after 2000. Thermal belt above 6500 ft persisting into overnight hours.
PRECIP CHANCE (CWR)	5% (CWR: 1%)	5% (CWR: 1%)
LIGHTNING CHANCE (LAL)	2%. (LAL: 1)	2% (LAL:1)

Please text or send a picture of your weather observations to the IMET at [435-248-2053](tel:435-248-2053), or email to [mike.seaman@noaa.gov](mailto:mike.seaman@noaa.gov). Thank you!

### Access IRAWS Weather Observations via Radio (update every 15 minutes)

From the assigned channel, key up the radio & type in the desired station number. The RAWS will transmit the observation back to you.

Bulldog Fire: IRAWS 13 (3384 ft). Type 0013.  
Wapiti Fire: IRAWS 18 (6022 ft): Type 0018.

Nellie Fire: IRAWS 20 (7394 ft). Type 0020.  
IRAWS 19 (5088 ft). Type 0019

# FIRE BEHAVIOR FORECAST

FORECAST NUMBER: 7	TYPE OF FIRE: Wildland Fire
FIRE NAME: Middle Fork Cmplx, Wapiti, Bull Trout	OPERATIONAL PERIOD: Thursday, 08/16/2024
DATE ISSUED: August 15, 2024	TIME ISSUED: 1900
UNIT: ID-BOF	SIGNED: Mike Pagoaga - FBAN

## WEATHER

\*\*\*SEE FIRE WEATHER FORECAST\*\*\*

*Local Weather Thresholds that shout **WATCH OUT**  
Temperatures above 80°, Relative Humidity below 20%,  
20' winds above 20 mph, ERC > 61*

## FUELS

Predominant fuels burning timber understory (TU5), and moderate load, timber litter (TL8) with inter-mixed conifer stands and sub-alpine stringers at higher elevations, sub-alpine with heavy lichen and moss, heavy dead fuels completely consuming. Live fuel moistures are at a levels that will contribute to fire spread. Ceanothus is at 90% This plant contains volatile oils that can show elements of advanced fire behavior when burning.

**Dead 1,000 Hr fuel moisture: 10%    ERC: 54 = 90<sup>th</sup> percentile**

## FIRE BEHAVIOR

### General Fire Behavior:

Return to active burning conditions. Expect torching and short-range spotting. Fire spread will be driven by terrain and winds along ridgelines. The live fuels will begin to contribute to fire spread with the combination of surface fire and wind.

*Fine Dead Fuel Moisture: 4% unshaded, 7% shaded  
Max Probability of Ignition 80%*

### Specific Fire Behavior:

#### **Middle Fork Complex:**

**Bulldog:** Continued fire activity to the north along the ridge above Hardscrabble Campground. Expect group torching with short-range spotting in areas exposed to general winds. In Div T, due to the broken fuels, it will need winds to carry the fire further to the east along Lightening Ridge.

**Nellie:** Fire spread to the north likely due to slope alignment. Continuous fuels to the south will facilitate active backing spotting toward the West Fork Big Pine Creek.

#### **Wapiti:**

Availability of live fuels and funneling of wind will move the fire east and north toward 525 road system and Wapiti Creek. Live fuels will begin to carry fire and will be favorable firing operations when RH drops below 25.

**Bull Trout:** Smoldering and creeping will continue. Threat to containment lines is not expected.

## Safety

Utilize the resources available to your advantage. RAWS stations update every 15 min!  
Initiate your planned actions at the right time.







<b>DIVISION ASSIGNMENT LIST</b> ICS-204				1. BRANCH <b>I</b>		2. DIVISION/GROUP <b>T</b>			
3. INCIDENT NAME <b>Middle Fork Complex</b>				4. OPERATIONAL PERIOD Date: August 16, 2024 Time: 0700 - 2100					
<b>OPERATIONS PERSONNEL</b>									
<b>PLANNING OPS:</b> Ashley Sites <b>STRATEGIC OPS:</b> Paul Diaz <b>DIVISION SUPERVISOR:</b> Mike Tuffelmire; Dustin Roper (T)				<b>BRANCH DIRECTOR:</b> Kevin Smith; Ashton Ferruzzi (T) <b>AIR OPERATIONS BRANCH DIRECTOR:</b> Jeff Polack					
<b>RESOURCES ASSIGNED THIS PERIOD</b>									
STRIKE TEAM/TASK FORCE/RESOURCE DESIGNATOR		Last Shift	LEADER	NUMBER PERSONS	DROP OFF POINT/TIME	PICK UP POINT/TIME			
CRW1 Snake River	C-11	8/24	Ken Bochniak	20	ICP / 0700	ICP/2100			
DOZ2 Sandhollow Fire Department	E-89	9/1	Toby Hawkings	2	ICP / 0700	ICP/2100			
TFLD Joshua Dominguez	O-86	8/27		1	ICP / 0700	ICP/2100			
* TFLD Andrew Nielsen (T)	C-7.1	8/19		1	ICP / 0700	ICP/2100			
CR2IA Miller Timber	C-8	8/18	Mike Hortert	20	ICP / 0700	ICP/2100			
* CRW2 G & C Forestry	C-16	8/21	Luis Vera	20	ICP / 0700	ICP/2100			
ENG6 Denver FD Engine 602	E-83	8/19	Jay McCann	3	ICP / 0700	ICP/2100			
ENG3 National Wildland Fire	E-80	8/23		3	ICP / 0700	ICP/2100			
WTT2 CA-CNF Water Tender 245	E-20	8/25	Joshua Craddock	2	ICP / 0700	ICP/2100			
SKG2 Bull Creek Forestry	E-87	8/25	David Bertsch	2	ICP / 0700	ICP/2100			
TFLD Cannon Mix	O-8	8/24		1	ICP / 0700	ICP/2100			
CR2IA Anthracite	C-5	8/21	Troy Stimaker	20	ICP / 0700	ICP/2100			
* ENG3 UT-UWF Engine 321	E-90	8/21	Collin Bertoch	7	ICP / 0700	ICP/2100			
CHP2 Flying V Tree	E-9	8/19	Ayrik Fisher	3	ICP / 0700	ICP/2100			
<b>CONTROL OPERATIONS:</b>									
<b>TASK:</b> Improve direct and indirect line construction from Middle Fork Payette River to 611G Road and then on towards Road 611. Prep and burn Road 611, as conditions allow. Construct indirect line around the Lightning Creek subdivision and plumb with hose lay.									
<b>PURPOSE:</b> Keep the fire north and east of structures along indirect line and north of Road 611 and Lightning Creek community.									
<b>END STATE:</b> Lightning Creek and Crouch communities are protected. The fire remains east of the Middle Fork of the Payette River.									
* Identified for IA									
<b>SPECIAL INSTRUCTIONS:</b>									
<i>If the fire moves to the south into the Lightning creek drainage with the potential to breach containment lines, Notify DIVS T, Branch I, OSC, LOFR. Notifications to Law Enforcement and Boise County EMS will be made. Evaluate the need for point protection of values within the subdivisions along Middle Fork Payette River.</i>									
FUNCTION		FREQUENCY Rx	FREQUENCY Tx	CHAN	FUNCTION		FREQUENCY Rx	FREQUENCY Y Tx	CHAN.
TACTICAL	Tac 4	166.7250 (123.0)	166.7250 (123.0)		A/G PRIMARY	Br 1	166.6000	166.6000	
COMMAND	CMD 10	169.5375 (123.0)	164.7125 (123.0)						
COMMAND									
PREPARED BY (RESOURCE UNIT LEADER)				APPROVED BY (PLANNING SECTION CHIEF)		DATE		TIME	
/s/ Patty Bates, RESL				/s/ Mark Glas, PSCC		8/15/24		2200	

<b>DIVISION ASSIGNMENT LIST</b> ICS-204	1. BRANCH <b>I</b>	2. DIVISION/GROUP <b>T</b>
3. INCIDENT NAME <b>Middle Fork Complex</b>	4. OPERATIONAL PERIOD Date: August 16, 2024 Time: 0700 - 2100	

**OPERATIONS PERSONNEL**

<b>PLANNING OPS:</b> Ashley Sites <b>STRATEGIC OPS:</b> Paul Diaz <b>DIVISION SUPERVISOR:</b> Mike Tuffelmire; Dustin Roper (T)	<b>BRANCH DIRECTOR:</b> Kevin Smith; Ashton Ferruzzi (T) <b>AIR OPERATIONS BRANCH DIRECTOR:</b> Jeff Polack
---	--

**RESOURCES ASSIGNED THIS PERIOD**

STRIKE TEAM/TASK FORCE/RESOURCE DESIGNATOR	Last Shift	LEADER	NUMBER PERSONS	DROP OFF POINT/TIME	PICK UP POINT/TIME	
SOFR Doug Havlina	O-6	8/24	1	ICP / 0700	ICP/2100	
EMPF Ethan Biederman	O-38	8/24	1	ICP / 0700	ICP/2100	
MESU Med Mod #1	E-46	8/24	Kelly Williams	2	ICP / 0700	ICP/2100
ARCH Joe Bergstrom	O-71	8/21	1	ICP / 0700	ICP/2100	
REAF Lucas Roy (T)	O-72	8/19	1	ICP / 0700	ICP/2100	
REAF Kyle Paffett (T)	O-89	8/23	1	ICP / 0700	ICP/2100	
REAF Matt Robinson	O-67	8/19	1	ICP / 0700	ICP/2100	
REAF Tony Papa	O-60	8/25	1	ICP / 0700	ICP/2100	

**CONTROL OPERATIONS:**

**TASK:** Improve direct and indirect line construction from Middle Fork Payette River to 611G Road and then on towards Road 611. Prep and burn Road 611, as conditions allow. Construct indirect line around the Lightning Creek subdivision and plumb with hose lay.

**PURPOSE:** Keep the fire north and east of structures along indirect line and north of Road 611 and Lightning Creek community.

**END STATE:** Lightning creek and Crouch communities are protected. The fire remains east of the Middle Fork of the Payette River.

*\* Identified for IA*

**SPECIAL INSTRUCTIONS:**

*If the fire moves to the south into the Lightning creek drainage with the potential to breach containment lines, Notify DIVS T, Branch I, OSC, LOFR. Notifications to Law Enforcement and Boise County EMS will be made. Evaluate the need for point protection of values within the subdivisions along Middle Fork Payette River.*

FUNCTION	FREQUENCY Rx	FREQUENCY Tx	CHAN	FUNCTION	FREQUENCY Rx	FREQUENCY Y Tx	CHAN.
TACTICAL	Tac 4	166.7250 (123.0)	166.7250 (123.0)	A/G PRIMARY	Br 1	166.6000	166.6000
COMMAND	CMD 10	169.5375 (123.0)	164.7125 (123.0)				
COMMAND							

<b>PREPARED BY (RESOURCE UNIT LEADER)</b> <i>/s/ Patty Bates, RESL</i>	<b>APPROVED BY (PLANNING SECTION CHIEF)</b> <i>/s/ Mark Glos, PSCC</i>	<b>DATE</b> 8/15/24	<b>TIME</b> 2200
---	---	------------------------	---------------------





<b>DIVISION ASSIGNMENT LIST</b> ICS-204	1. BRANCH <b>II</b>	2. DIVISION/GROUP <b>M</b>
3. INCIDENT NAME <b>Wapiti</b>	4. OPERATIONAL PERIOD <b>Date:</b> August 16, 2024 <b>Time:</b> 0700 - 2100	

<b>OPERATIONS PERSONNEL</b>	
<b>PLANNING OPS:</b> Ashley Sites <b>STRATEGIC OPS:</b> Paul Diaz <b>DIVISION SUPERVISOR:</b> Dave Macclay-Schulte; Javier Kirker (T)	<b>BRANCH DIRECTOR:</b> Adam Carr <b>AIR OPERATIONS BRANCH DIRECTOR:</b> Jeff Polack

RESOURCES ASSIGNED THIS PERIOD						
STRIKE TEAM/TASK FORCE/RESOURCE DESIGNATOR	Last Shift	LEADER	NUMBER PERSONS	DROP OFF POINT/TIME	PICK UP POINT/TIME	
CRW1 Lolo IHC	C-10	8/26	Shawn Faiella	22	Warm Springs 0700	Warm Springs 2100
ENG6 IPF Engine 621	E-48	8/28	Will Dalby	5	Warm Springs 0700	Warm Springs 2100
ENG6 Axxess Fire	E-11	8/20	Shane Sexton	3	Warm Springs 0700	Warm Springs 2100
ENG3 NV-WID Engine 2309	E-29	8/20	Scott Pace	3	Warm Springs 0700	Warm Springs 2100
ENG3 AAA	E-38	8/26	Vanessa Aldrich	3	Warm Springs 0700	Warm Springs 2100
ENG3 Los Pinos 88	E-53	8/22	David Doucleff	5	Warm Springs 0700	Warm Springs 2100
ENG3 Colorado River Fire Engine 361	E-54	8/24	Zach Niccoli	3	Warm Springs 0700	Warm Springs 2100
WTT2 F4 Fire	E-21	8/25	Craig Fisher	2	Warm Springs 0700	Warm Springs 2100
WTS1 R B & H Enterprises	E-81	8/26	Rob Connell	1	Warm Springs 0700	Warm Springs 2100
TFLD Dan Dosch	E-96.2	8/22		1	Warm Springs 0700	Warm Springs 2100
TFLD Hunter Flinders (T)	E-96.3	8/22		1	Warm Springs 0700	Warm Springs 2100
TFLD Dustin Mireles (T)	O-85	8/28		1	Warm Springs 0700	Warm Springs 2100
EMPF Anthony Amoroso	O-27	8/22		1	Warm Springs 0700	Warm Springs 2100

**CONTROL OPERATIONS:**

**TASK:** Provide and improve protections for structures and improvements in Wapiti Creek, Sawtooth Lodge, and infrastructure in the Grandjean area. Conduct firing operations based on fire behavior.

**PURPOSE:** Minimize fire impacts to local infrastructure in the Grandjean area.

**END STATE:** Local infrastructure is protected from fire impact

**SPECIAL INSTRUCTIONS:**

*Evaluate fires progression and rate of spread to the east and potential to impact values.*

FUNCTION	FREQUENCY Rx	FREQUENCY Tx	CHAN	FUNCTION	FREQUENCY Rx	FREQUENCY Y Tx	CHAN.
TACTICAL	TAC 3	168.6000 (103.5)	168.6000 (103.5)	A/G PRIMARY	Br II	168.3750	168.3750
COMMAND	CMD 8	171.8500 (103.5)	162.8000 (103.5)				
COMMAND							

<b>PREPARED BY (RESOURCE UNIT LEADER)</b> <i>/s/ Patty Bates, RESL</i>	<b>APPROVED BY (PLANNING SECTION CHIEF)</b> <i>/s/ Mark Glos, PSCC</i>	<b>DATE</b> 8/15/24	<b>TIME</b> 2200
---	---	------------------------	---------------------

<b>DIVISION ASSIGNMENT LIST</b> ICS-204	1. BRANCH <b>II</b>	2. DIVISION/GROUP <b>V</b>
3. INCIDENT NAME <b>Wapiti</b>	4. OPERATIONAL PERIOD <b>Date:</b> August 16, 2024 <b>Time:</b> 0700 - 2100	

OPERATIONS PERSONNEL	
<b>PLANNING OPS:</b> Ashley Sites <b>STRATEGIC OPS:</b> Paul Diaz <b>DIVISION SUPERVISOR:</b> Dan Helderline; Charlie Fischer (T)	<b>BRANCH DIRECTOR:</b> Adam Carr <b>AIR OPERATIONS BRANCH DIRECTOR:</b> Jeff Polack

RESOURCES ASSIGNED THIS PERIOD						
STRIKE TEAM/TASK FORCE/RESOURCE DESIGNATOR	Last Shift	LEADER	NUMBER PERSONS	DROP OFF POINT/TIME	PICK UP POINT/TIME	
CR2IA PatRick	C-9	8/29	Levy Miller	20	Warm Springs 0700	Warm Springs 2100
ENG5 Flat Rock	E-93	8/25	Cody Blair	3	Warm Springs 0700	Warm Springs 2100
ENG5 Three Rivers	E-41	8/25	Murray Hannaweeka	3	Warm Springs 0700	Warm Springs 2100
ENG6 ESB Management	E-39	8/26	Matt Nickle	3	Warm Springs 0700	Warm Springs 2100
ENG6 Northern Utah Fire	E-111	8/25	Anthony Gordon	3	ICP / 0700	Warm Springs 2100
WTT2 Treasure Valley	E-116	8/26	John Van Auken	2	Warm Springs 0700	Warm Springs 2100
WTS2 Dust Buster	E-12	8/28	Paul Kurzeborn	1	Warm Springs 0700	Warm Springs 2100
WTS2 Allens	E-42	8/21	Dave Shaw	1	Warm Springs 0700	Warm Springs 2100
TFLD Nick Clark (T)	O-38.32	8/22		1	Warm Springs 0700	Warm Springs 2100
TFLD Sean Weston	O-29	8/21		1	Warm Springs 0700	Warm Springs 2100
TFLD Dustin Mireles (T)	O-85	8/28		1	Warm Springs 0700	Warm Springs 2100
EMPF Jeff Ullrey	O-19	8/24		1	Warm Springs 0700	Warm Springs 2100
AMB2 Fireline Ambo #1	E-5	8/19	Cassie Allen	2	Warm Springs 0700	Warm Springs 2100
REAF Garry Brown	O-22	8/23		1	Warm Springs 0700	Warm Springs 2100
REAF Ryan Santo	O-23	8/23		1	Warm Springs 0700	Warm Springs 2100

**CONTROL OPERATIONS:**

**Task:** Provide and improve protections for structures and improvements in Bear Creek, Camp Creek and infrastructure in the Grandjean area. Conduct firing operations based on fire behavior. Patrol / monitor fire perimeter. Ensure fire edge is secured.

**Purpose:** Secure fire line through progressive firing operations to bring the fire to a more favorable fireline location.

**End State:** Existing structures and infrastructure do not sustain further damage. Safe ingress and egress is ensured.

**SPECIAL INSTRUCTIONS:**

*Evaluate fires progression and rate of spread to the west and potential to get established in Wolf Creek drainage.*

FUNCTION		FREQUENCY Rx	FREQUENCY Tx	CHAN	FUNCTION		FREQUENCY Rx	FREQUENCY Y Tx	CHAN.
TACTICAL	TAC 2	168.2000 (103.5)	168.2000 (103.5)		A/G PRIMARY	Br II	168.3750	168.3750	
COMMAND	CMD 8	171.8500 (103.5)	162.8000 (103.5)						
COMMAND									

<b>PREPARED BY (RESOURCE UNIT LEADER)</b> <i>/s/ Patty Bates, RESL</i>	<b>APPROVED BY (PLANNING SECTION CHIEF)</b> <i>/s/ Mark Glos, PSCC</i>	<b>DATE</b> 8/15/24	<b>TIME</b> 2200
---	---	------------------------	---------------------

AIR OPERATIONS SUMMARY ICS-220										Time Prepared		Date Prepared		Prepared By	
Incident Name / Number Middle Fork Complex / ID-BOF-000936 Wapiti / ID-BOF-000683 Bull Trout / ID-BOF-000699				Sunrise		Sunset		Civil: Garden Valley HB		Shutdown		Operational Period - Date		Operational Period - Time	
				6:49		20:46		21:16		Sunset		8/16/2024		0700-2100	
<p>General Remarks, Safety Notes, Hazards, Air Operations Special Equipment, etc.</p> <p><b>All GPS data will be collected in DD° MM.MM'</b></p> <ul style="list-style-type: none"> <li>- Pilots/flight crews discuss increment weather plans.</li> <li>- Aircraft will cease tactical operations by sunset. Ferry flights are allowed during 30 minutes after sunset. This is due to reduced visibility caused by smoke and topography.</li> <li>- Absolutely clear drop area/lines before initiating drop sequence.</li> <li>- You may see or hear a UAV (drone) on/over your division. We will have one operating over the Complex. Any questions, confirm with your DIVS.</li> <li>- As always - if you see something questionable, say something!!!</li> </ul>										Helibase Information		TFR/NOTAM Information		Extraction / Medivac	
Name: Garden Valley				All TFR's updated 8-11-2024		(helicopter)									
Latitude: 44° 03.849'				Bull Trout 4/9763		All air medivac requests will be requested and coordinated thru Boise (ID-BOF) Dispatch.									
Longitude: 115° 55.508'				Bulldog 4/6484		Short-Haul:									
Elevation: 3177'				Freq 126.825, 11K msl, 24hrs.		1) Teton Helitack, N35HX, West Mtn Complex, Cascade, ID airport									
Note: adjacent to Garden Valley Airport (U88)				Freq 120.125, 12.5K msl, 24hrs.		2) Krassel Short-Haul, N353SH, large fire support, McCall, ID airport									
E-mail costs to: 2024.middleforkcomplex.finance@firenet.gov				http://tr.faa.gov/tr2/list.html											
Incident Frequencies		RX	Tone	TX	Tone	AM/FM	Position	Name	Phone						
Bull Trout - A/A TFR		166.6000	-	166.6000	-	FM	AOBD	Jeff Polack	208-816-3447						
Bull Trout - A/A TFR		169.2000	-	169.2000	-	FM	ASGS	Steve Croy	540-230-2568						
Bull Trout - A/A TFR		170.0250	-	170.0250	-	AM	HEBM	Gunnar Cahall	208-731-3683						
Bull Trout - A/A TFR		168.3750	-	168.3750	-	FM	HEBM(t)	Jason Van Dyk	208-781-0144						
Bull Trout - A/A TFR		172.4500	-	172.4500	-	FM	HEBM(t)	Aaron Reynolds	775-997-9567						
Bull Trout - A/A TFR		167.0750	-	167.0750	-	FM	UASP	Matt Gosney	928-598-2780						
Bull Trout - A/A TFR		163.1000	-	163.1000	-	FM	UASP	Robert Ordenez	907-370-9259						
Bull Trout - A/A TFR		168.6250	-	168.6250	-	FM									
Bull Trout - A/A TFR		155.2800	-	155.2800	156.7	FM									
<p><b>HELIPTERS (Garden Valley Helibase)</b></p>															
FAA #	Type	Make/Model	Helibase	Avail	Start	Remarks	FAA #	TYPE	Make/Model	Helibase	Avail	Start	Remarks		
N132BH	3	AS-350B3	Garden Valley	Y	0830	EU/Crew w/ bucket	N767NA	1	Kaman/Kmax	Cascade	Y	8:30	Bucket		
N530NC	2	B-212S	Garden Valley	Y	0830	EU/Crew w/ bucket	N563DJ	1	UH-60A	Cascade	Y	8:30	Bucket		
N205LM	2	B-205 A++	Garden Valley	Y	0830	EU/Crew w/ bucket	N9696W	1	S-61A	Cascade	Y	8:30	Bucket		
N2773H	2	B-205 A++	Garden Valley	Y	0830	EU/Crew w/ bucket	N957CR	1	UH-60A	Cascade	Y	8:30	Bucket		
N699RH	1	Kaman/Kmax	Garden Valley	Y	0830	Bucket	N402PJ	3	B-407	Stanley	Y	8:30	Recon		
N114NS	3	B-407	-Enroute	Y	0830	EU/Crew/bucket									
<p><b>UNMANNED AIRCRAFT SYSTEMS</b></p>															
FAA #	Type	Model	Call Sign	Avail	Start	Remarks	FAA #	Type	Make/Model	Base	Avail	Start	Remarks		
FA3AC3MM7E	3	Alta X	UR-31			PSD, IR / EO									
	3	M600	UR-32			IR / EO									

INCIDENT RADIO COMMUNICATIONS PLAN I-205				1. INCIDENT NAME		2. DATE/TIME PREPARED		3. OPERATIONAL PERIOD DATE/TIME			
				Middle Fork Complex BRANCH ONE		8/15/24 1500		8/16/24 0700 - 2100			
4. BASIC RADIO CHANNEL UTILIZATION											
Ch #	Function	Channel Name	Assignment	RX Freq	N/W	RX Tone/NAC	TX Freq	N/W	TX Tone/NAC	Mode Analog (A) Digital (D) Mixed (M)	Remarks
1	TAC	TAC 1	DIV D	168.0500	N	123.0	168.0500	N	123.0	A	BULLDOG
2	TAC	TAC 2	DIV P	168.2000	N	123.0	168.2000	N	123.0	A	NELLIE
3	TAC	TAC 3	DIV O	168.6000	N	123.0	168.6000	N	123.0	A	BULLDOG
4	TAC	TAC 4	DIV T	166.7250	N	123.0	166.7250	N	123.0	A	BULLDOG
5	TAC	TAC 5	UN	168.7750	N	123.0	168.7750	N	123.0	A	UNASSIGNED
6	WEATHER	RAWS	BRANCH 1	163.3500	N	NONE	163.3500	N	NONE	A	REMOTE AUTOMATED WEATHER STATION
7	COMMAND	CMD 7	BRANCH 2	168.0125	N	103.5	164.5750	N	103.5	A	S OF COPPER (BULL TROUT)
8	COMMAND	CMD 8	BRANCH 2	171.8500	N	103.5	162.8000	N	103.5	A	ZUMWALT MTN (WAPITI)
9	COMMAND	CMD 9	BRANCH 1	170.4500	N	123.0	168.1000	N	123.0	A	JACKSON LOOKOUT
10	COMMAND	CMD 10	BRANCH 1	169.5375	N	123.0	164.7125	N	123.0	A	SCOTT LOOKOUT
11	COMMAND	BOF NORTH REPEAT		171.4500	N	NONE	164.1625	N	156.7	A	BOF N REPEAT PACKER JOHN (TONE 7)
12	A/G	A/G PRI		166.6000	N	NONE	166.6000	N	NONE	A	BRANCH 1 BULLDOG A/G PRIMARY
13	A/G	A/G SEC		169.2000	N	NONE	169.2000	N	NONE	A	BRANCH 1 BULLDOG A/G SECONDARY
14	A/G	A/G TER		170.0250	N	NONE	170.0250	N	NONE	A	BRANCH 1 NELLIE A/G TERTIARY
15	MEDEVAC A/G	ST COMM EMS		155.2800	N	NONE	155.2800	N	156.7	A	STATE COMM (EMS)
16	AIRGUARD	AIR GRD		168.6250	N		168.6250	N	110.9	A	EMERGENCY USE ONLY
5. Special Instructions: TO UTILIZE CHANNEL 6 RAWS PRESS THE PUSH TO TALK BUTTON, ON THE KEY PAD ENTER 0013 FOR BULLDOG OR 0020 FOR NELLIE AREAS WHILE TRANSMITTING. RELEASE PUSH TO TALK AND RAWS STATION WILL REPLY WITH LOCAL WEATHER OBSERVATION											
6. I-205 Prepared By: Communications Unit Leader				Name: MIKE SCHERER		Signature: PAUL SCHERER		Digitally signed by PAUL SCHERER Date: 2024.08.15 17:04:00 -0700'			



INCIDENT RADIO COMMUNICATIONS PLAN I-205				1. INCIDENT NAME		2. DATE/TIME PREPARED		3. OPERATIONAL PERIOD DATE/TIME			
				BRANCH TWO Wapiti/Bull Trout		8/15/24 1500		8/16/24 0700 - 2100			
4. BASIC RADIO CHANNEL UTILIZATION											
Ch #	Function	Channel Name	Assignment	RX Freq	N/W	RX Tone/NAC	TX Freq	N/W	TX Tone/NAC	Mode Analog (A) Digital (D) Mixed (M)	Remarks
1	TAC	TAC 1	DIV A	168.0500	N	103.5	168.0500	N	103.5	A	BULLTROUT
2	TAC	TAC 2	DIV V	168.2000	N	103.5	168.2000	N	103.5	A	WAPITI
3	TAC	TAC 3	DIV M	168.6000	N	103.5	168.6000	N	103.5	A	WAPITI
4	TAC	TAC 4	UN	166.7250	N	103.5	166.7250	N	103.5	A	UNASSIGNED
5	TAC	TAC 5	UN	168.7750	N	103.5	168.7750	N	103.5	A	UNASSIGNED
6	TAC	TAC 6	UN	168.2500	N	103.5	168.2500	N	103.5	A	UNASSIGNED
7	COMMAND	CMD 7	BRANCH 2	168.0125	N	103.5	164.5750	N	103.5	A	S OF COPPER (BULL TROUT)
8	COMMAND	CMD 8	BRANCH 2	171.8500	N	103.5	162.8000	N	103.5	A	ZUMWALT MTN (WAPITI)
9	COMMAND	CMD 9	BRANCH 1	170.4500	N	123.0	168.1000	N	123.0	A	JACKSON LOOKOUT
10	COMMAND	CMD 10	BRANCH 1	169.5375	N	123.0	164.7125	N	123.0	A	SCOTT LOOKOUT
11	WEATHER	RAWS	BRANCH II	163.3500	N	NONE	163.3500	N	NONE	A	REMOTE AUTOMATED WEATHER STATION
12	A/G	A/G PRI		168.3750	N	NONE	168.3750	N	NONE	A	BRANCH 2/WAPITI A/G PRIMARY
13	A/G	A/G SEC		172.4500	N	NONE	172.4500	N	NONE	A	BRANCH 2 WAPITI A/G SECONDARY
14	A/G	A/G TER		167.0750	N	NONE	167.0750	N	NONE	A	BRANCH 2 BULLTROUT A/G TERTIARY
15	MEDEVAC A/G	ST COMM EMS		155.2800	N	NONE	155.2800	N	156.7	A	STATE COMM (EMS)
16	AIRGUARD	AIRGUARD		168.6250	N		168.6250	N	110.9	A	EMERGENCY USE ONLY
<b>5. Special Instructions:</b> TO UTILIZE CHANNEL 6 RAWS PRESS THE PUSH TO TALK BUTTON, ON THE KEY PAD ENTER 0018 OR 0019 WHILE TRANSMITTING. RELEASE PUSH TO TALK AND RAWS STATION WILL REPLY WITH LOCAL WEATHER OBSERVATION											
<b>6. I-205 Prepared By: Communications Unit Leader</b>				<b>Name: MIKE SCHERER</b>				<b>Signature: PAUL SCHERER</b>			

Printed: 8/16/24 15:00:00  
Unit: 20508151704397000



# Overcoming limiting mind-sets to improve safety

Organizations looking to improve workplace safety have several methods at their disposal. But to embed a sustainable safety culture, they must overcome the mind-sets that underline unsafe behaviors.

## Five limiting mind-sets

### 1. **Fear of blame: “If I report an incident, I’ll be punished”**

Employees underreport noteworthy incidents for fear of being penalized.

- Create an environment in which employees are immediately rewarded or recognized for making safe behaviors and reporting incidents or near misses.

### 2. **Disempowerment: “Safety is someone else’s job”**

There is no buy-in and everyone passes the buck.

- Take a “managed safety” (as opposed to “regulated safety”) approach where supervisors can trust employees to use their own judgment when strict compliance with safety rules wouldn’t be enough to ensure safety or could introduce risk.

### 3. **Trade-off: “Safe means less productive”**

Safety and productivity are often perceived as antagonists.

- leaders to develop clear safety standards that take existing processes into account while integrating safety and productivity requirements.

### 4. **Fatalism: “Injuries are part of the job”**

Learned tolerance to risk has to do with the pervasive belief that some risks can’t be mitigated.

- Align leadership and employees on risk management goals to collaboratively calibrate expectations.


### 5. **Complacency: “Cultural change takes time”**

Managers committed to change often have low expectations about the pace of improvement resulting in a failure to enlist key influencers, generate momentum, and deliver the early wins critical for successful transformations.

- Role model behaviors from the top. Employee mind-sets often reflect those of their leaders and influencers because role modeling, whether good or bad, eventually shapes a culture.
- Acknowledging how the organization has performed against its safety goals to send the right message about their commitment to safety.

# MEDICAL PLAN (ICS 206 WF)

Controlled Unclassified Information//Basic

<b>1. Incident/Project Name</b>			<b>2. Operational Period</b>				
Middle Fork Complex, Wapiti, Bull Trout			08/16/24 0700-2100				
<b>3. Ambulance Services</b>							
<b>Name</b>	<b>Complete Address</b>	<b>Phone &amp; EMS Frequency</b>	<b>Advanced Life Support (ALS)</b>				
			<b>Yes</b>	<b>No</b>			
Lowman Emergency Services	8000 ID 21 Lowman ID 83637	911	<input type="checkbox"/>	<input checked="" type="checkbox"/>			
Garden Valley Fire	373 S Middle Fork Rd, Garden Valley ID 83622	911	<input checked="" type="checkbox"/>	<input type="checkbox"/>			
<b>4. Air Ambulance Services</b>							
<b>Name</b>	<b>Contact</b>	<b>Type of Aircraft &amp; Capability</b>					
35HX (Teton) at Cascade Helibase 1469 Main St, Cascade, ID 83611	Boise Dispatch 208-384-3398	AS350B3e; Short-haul, BLS Medevac, Hospital Transport, Day Only					
3SH (Krassel) at McCall Helibase 605 S. Mission St, McCall, Idaho 83638	Payette Dispatch 208-425-8613	AS350B3e; Short-haul, Medevac, Hospital Transport, Day Only					
Life Flight Inc.	(800) 232-0911	Bell 407, ALS, Night Capable					
Air St. Luke's	(208) 381-8900	Bell 429, ALS, Night Capable, Fixed Wing					
<b>5. Hospitals</b>							
<b>Name &amp; Address</b>	<b>GPS Datum – WGS 84</b> Degrees Decimal Minutes DD° MM.MM' N – Lat DD° MM.MM' W - Long	<b>Travel Time</b>		<b>Phone</b>	<b>Helipad</b>		<b>Level of Care</b>
		<b>Air</b>	<b>Ground</b>		<b>Yes</b>	<b>No</b>	
Garden Valley Family Med 856 Banks Lowman Road Garden Valley, ID 83622	<b>Lat:</b> 44° 06.06' N	15 MIN	1 HRS	Direct Line 208-462-3533	<input checked="" type="checkbox"/>	<input type="checkbox"/>	Family Medical Clinic
	<b>Long:</b> 115° 58.07' W						
	<b>VHF:</b> F2, Boise Dispatch						
St. Alphonsus Hospital 1055 N Curtis Rd Boise, ID 83706	<b>Lat:</b> 43° 36.79' N	45 MIN	3.5 HRS	ER Desk 208-367-3223, EMS report 208-367-6479	<input checked="" type="checkbox"/>	<input type="checkbox"/>	Level II Trauma
	<b>Long:</b> 116° 15.29' W	FAA# ID91					
	<b>VHF:</b> F2, Boise Dispatch						
St. Luke's Medical Center 190 E. Bannock St. Boise, ID 83712	<b>Lat:</b> 43° 36.77' N	45 MIN	3.5 HRS	208-381-2222	<input checked="" type="checkbox"/>	<input type="checkbox"/>	Critical Care Hospital
	<b>Long:</b> 116° 11.51' W	FAA# ID49					
	<b>VHF:</b> F2, Boise Dispatch						
EIRMC Burn Center 3100 Channing Way Idaho Falls, ID 83404	<b>Lat:</b> 43° 29.4' N	2 HRS	5 HRS	Direct Line 208-529-7986	<input checked="" type="checkbox"/>	<input type="checkbox"/>	Level III/ Burn Center
	<b>Long:</b> 112° 01.8' W	FAA# ID18					
	<b>VHF:</b>						
University of Utah 50 Medical Dr N Salt Lake City, UT 84132	<b>Lat:</b> 40° 46.32 N	3 HRS	6 HRS	(801) 581-2241	<input checked="" type="checkbox"/>	<input type="checkbox"/>	Level I / Burn Center
	<b>Long:</b> 111° 50.30 W	FAA# UT21					
	<b>VHF:</b>						
<b>Division   Branch   Group</b>		<b>Area Location Capability</b>					
<b>ICP Garden Valley Center</b> 1219 Banks Lowman Rd Garden Valley, ID 83622		<b>EMS Responders &amp; Capability:</b>		Rosemary Myers, AEMT/MEDL BLS, Steven Kendley, EMTF/MEDLT, Emily Nemore, EMTF/MEDLT			
		<b>Equipment Available on Scene:</b>		IV, AED, O2			
<b>7. Name &amp; Location</b>		<b>Remote Camp Location: Warm Springs Air Strip Rd</b>					
<b>FOB</b> Warm Springs Air Strip Warm Springs, ID 83637		<b>EMS Responders &amp; Capability:</b>		Andrea Colson, EMTF/MEDL, Ray Mines EMTF/MEDLT, Ryan Jones, EMP/MEDLT, ALS Meds,			
		<b>Equipment Available on Scene:</b>		IV, AED, O2			
<b>8. Prepared By (Medical Unit Leader)</b>		<b>Date/Time</b>	<b>10. Reviewed By (Safety Officer)</b>		<b>11. Date/Time</b>		
/S/ Rosemary Myers		08/15/24 1613	/S/ 		8/15/24 2100		

## **ID-BOF Middle Fork Complex, Wapiti and Bull Trout Fires Initial Attack Responsibility and Procedures**

### **The following applies to all IA responses:**

- Relay the initial coordinates and size up information (if applicable) to the Incident's Communications Unit.
- The Communications Unit will take the coordinates to the Situation Unit to plot and determine if the new start is in/out of the IA responsibility area.
- The Communications Unit will notify Planning Operations of the potential new IA.
- If requested, the Planning Operations will update the jurisdictional Duty Officer.
- Incident Communications Unit will notify the jurisdictional dispatch office of the new start, to provide an initial size-up and inform the jurisdictional dispatch of the resources responding.
- In all cases, IA will be documented using the appropriate Incident Organizer and be given to the local agency representative upon arrival on scene, in camp or sent to the respective jurisdictional dispatch center.
- Air resources obtaining size up information must communicate that on the Air to Ground frequency due to other incidents in the area and potential of crossing over. Ground resources will deliver size up information to the Communications Unit on Command frequency.

### **Fires within the IA Responsibility Area:**

- All communications will be handled through the Incident's Communications Unit.
- The initial size up will be relayed to Line Operations, who will send appropriate identified resources.
- All requests for additional resources must be approved by Line Operations.
- Northern Rockies CIM Team 5 will manage the fire until it is suppressed completely, turned over to local resources, or the agency administrator makes a different decision regarding its management.
- If the jurisdictional dispatch office identifies a potential new start within the delegated incident IA response area, dispatch will notify the Incident's Communications Unit and all above procedures will be implemented.

### **Fires outside the IA Responsibility Area:**

- The respective jurisdictional dispatch office will dispatch resources to the fire per dispatch procedures unless otherwise requested by the Duty Officer for the jurisdictional Agency.
- The jurisdictional duty officer may request team resources (aviation or ground) through the Incident's Communications Unit as approved by Line Operations.
- If incident's resources are utilized, and arrive on-scene first, they will provide a size up to the incident Communications Unit. The Communications Unit will, in turn, provide intel/information to the jurisdictional dispatch center.
- The jurisdictional dispatch office will provide the Air-to-Air frequency to all dispatched aviation resources to communicate with Air Attack.
- Jurisdictional responding ground resources will be given the frequencies to the appropriate fire incident (Middle Fork Complex, Wapiti and/or Bull Trout), to provide positive communications with all resources responding.
- Aviation resources may go direct to the jurisdictional dispatch office for their notification and size up but must also notify the Incident's Communications Unit, in coordination with the incident Air Attack.

## Tentative Demob Schedule

### August 16

Incident/Request #	Resource	Demob Time
Middle Fork Complex/C-9	CRW2 Torres Contracting	
Wapiti/O-14	SOFR Robert Hilfer	
Middle Fork/O-33.52	GISS Shannon Robinski	
Middle Fork /O-33.52	MEDL Ryan Le Baron	
Middle Fork/A-3.1	HECM Ben Lindauer	

### August 17

Incident/Request #	Resource	Demob Time
Middle Fork Complex/O-12	THSP Adam Simmons	
Middle Fork Complex/O-33.17	PSCC Julie Shea	

### August 18

Incident/Request #	Resource	Demob Time
Middle Fork Complex/E-86	ENG6 Aspen FPD Brush 61	
Middle Fork Complex/O-33.72	EQTR Tamala Carter	
Middle Fork Complex/O-33.73	PTRC Ashley Johnson	
Middle Fork Complex/O-33.74	PTRC Victoria Davis	
Wapiti/O-14	SOFR Robert Hilfer	
Wapiti/ E-12	WTS2 Clear Water River	
Bull Trout/O-26	EMTF Adventure Medics, Ian Roy	

## DEMOB STEPS

Review the schedule for you assigned check out time and date. On your demob day (or before), complete the following items:

- FINANCE: Email or turn in any remaining documents required by Finance (i.e., shift tickets, CTRs, contracts, AD paperwork, pre & post equipment inspections).
- SUPPLY: Return any items checked out from Supply
- COMM: Return any items checked out from Communications.
- WEED WASH: Complete Weed Wash and Scan the QR code there to verify completion.

**Scan the Demob QR code to complete Demob**



## Demob Requiring Flights

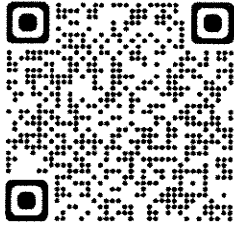


If you are flying home, please contact DMOB at least 3 days in advance of your demob date. Use the QR code, call, text or email: Name on ID \* gender \* email for itinerary \* phone number \* date and time you are able to leave ICP \* date of flights \* airports you are flying to and from \* suggested flights and frequent flying number (optional)

If you have any questions or need any help, contact DMOB at (208) 891-7380  
[2024.middleforkcomplex.demob@firenet.gov](mailto:2024.middleforkcomplex.demob@firenet.gov)

## TRAINING MESSAGE

Trainees, please sign in with the training specialist:



Remember to close out, you'll need completed work in your PTB, a signed performance rating, and completion of the Exit Interview.

Incident Training Specialists,  
*Brian Holmes*  
*Brian Lamphiear*

## HUMAN RESOURCES MESSAGE

### Goose Fact

When flying geese honk from behind to encourage those up front to keep up the speed.

### Goose Lesson

Encouragement from the ranks leads to greater efficiencies in leadership.

When a goose is incapacitated and falls out of formation, two geese fall out with it to help and protect it. They stay together until the goose can fly again, launching out on their own to catch up with their group or another formation.

People with goose sense stand by each other in times of adversity and challenge, recognizing the point is to achieve the goal safely and understanding they are a part of a larger effort.

"If the team wins, we all had a good year. If we don't win, it doesn't matter who had a good year"

Paul O'Neill, New York Yankees

*Sherry Neal* and Mollie, HRSP (virtual)  
(801) 791-0044

## LOGISTICS

### ICP Meal Times:

Breakfast: 0600 - 0900

Dinner: 1800 - 2130

### Showers:

0530 – 1200

1400 – 2200

## E-MAIL CONTACTS

### Ordering:

2024.middleforkcomplex.ordering@firenet.gov

### Finance:

2024.middleforkcomplex.finance@firenet.gov

### DMOB

2024.middleforkcomplex.demob@firenet.gov

## INFORMATION

### Fire Information: 208-992-3045

Email: [2024.middleforkcomplex@firenet.gov](mailto:2024.middleforkcomplex@firenet.gov)

**We need photos to share all the great work you are accomplishing out there!**

Please email to [2024.middleforkcomplex@firenet.gov](mailto:2024.middleforkcomplex@firenet.gov) or visit a Public Information Officer in camp and include a brief description of the photo. *Thank You!*

**Lost and Found also located at Information Yurt at Middlefork Complex ICP**

Middle  
Fork  
Complex  
InciWeb



Wapiti  
Fire  
InciWeb



Bull Trout  
Fire  
InciWeb



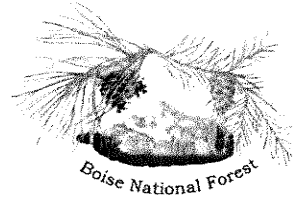
Boise National  
Forest  
Facebook



# Resource Advisor Message

Middle Fork Complex

8/16/24



## Why Stream Sediment is Like Hanging Out with the In-Laws

Streams and rivers naturally carry rock and soil particles that have eroded from the upstream landscape. The movement and deposition of sediment is essential for maintaining stable stream banks and viable habitat for aquatic species. However, like other things that are healthy in small doses (such as ice cream sandwiches or spending time with your spouse's family), too much of it can be harmful. Excess sediment clogs up the spaces between rocks, burying food sources for macroinvertebrates and covering spawning sites for fish. Here on the Boise National Forest, our road system is the main contributor of sediment to the streams on the landscape. Species like the threatened bull trout, which require cold, clear water, need your help to protect their critical habitat on the Middle Fork Payette and surrounding streams.

At drafting and pump sites, it is common to see spillage flowing back into the stream and carrying sediment with it. A telltale sign of this erosion is a sediment fan spreading into the water and a layer of sand and dirt on the rocks in the river. If you notice this occurring, you can protect bull trout and other aquatic organisms by using a hand tool to redirect spillage away from the stream. In the following days, you can check to see if your diversion worked and to observe its impact.

Questions? Please contact any of the Resource Advisors.

# Incident Action Plan

## MIDDLE FORK COMPLEX

ID-BOF-000936  
8/16/2024 Day

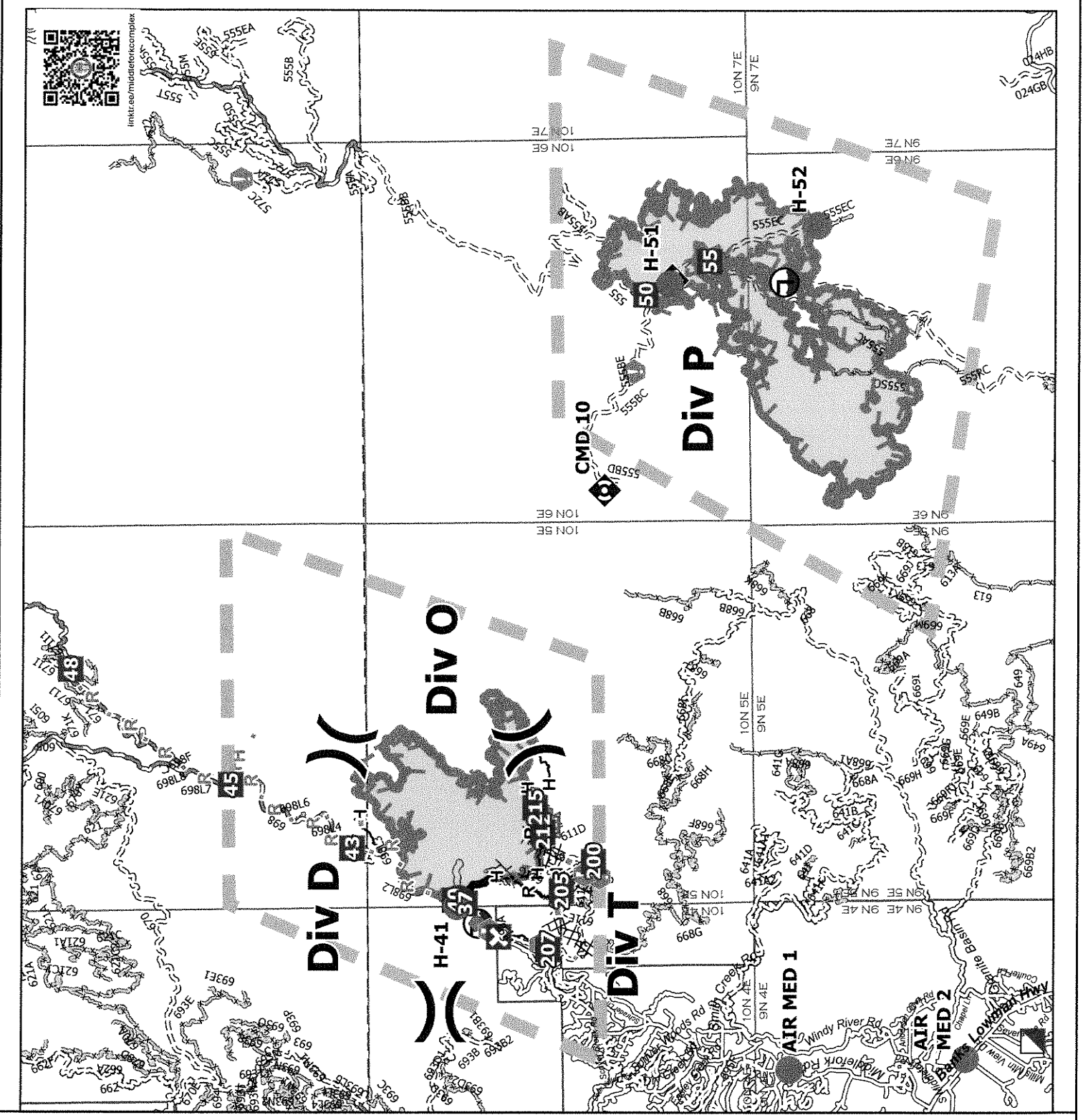
9207 acres at 8/14/2024 2257 hr

	Helispot
	Division Break
	Incident Command Post
	Drop Point
	Closure
	Value at Risk
	Gate
	Road Repair
	Repair Point
	Culvert
	Mobile Weather Unit
	Repeater
	Hazard
	Dip Site
	Draft Site
	Completed Dozer Line
	Completed Hand Line
	Completed Road as Line
	Planned Dozer Line
	Planned Hand Line
	Planned Mixed Construction Line
	Planned Road as Line
	Proposed Line
	Access Route
	Temporary Flight Restriction
	Contained
	Uncontained
	Wildfire Daily Fire Perimeter
	Road
	Road, high clearance
	Road, closed
	Road, paved
	Road, dirt/gravel
	Road, high clearance
	FS Closed Road



0 1 2 3  
Miles

1:135,000 | mcreay | 8/15/2024 15:18  
North American 1983 Datum, LatLong Grid





# Incident Action Plan

WAPITI

ID-BOF-000683

8/16/2024 Day

3872 acres at 8/14/2024 2308 hr

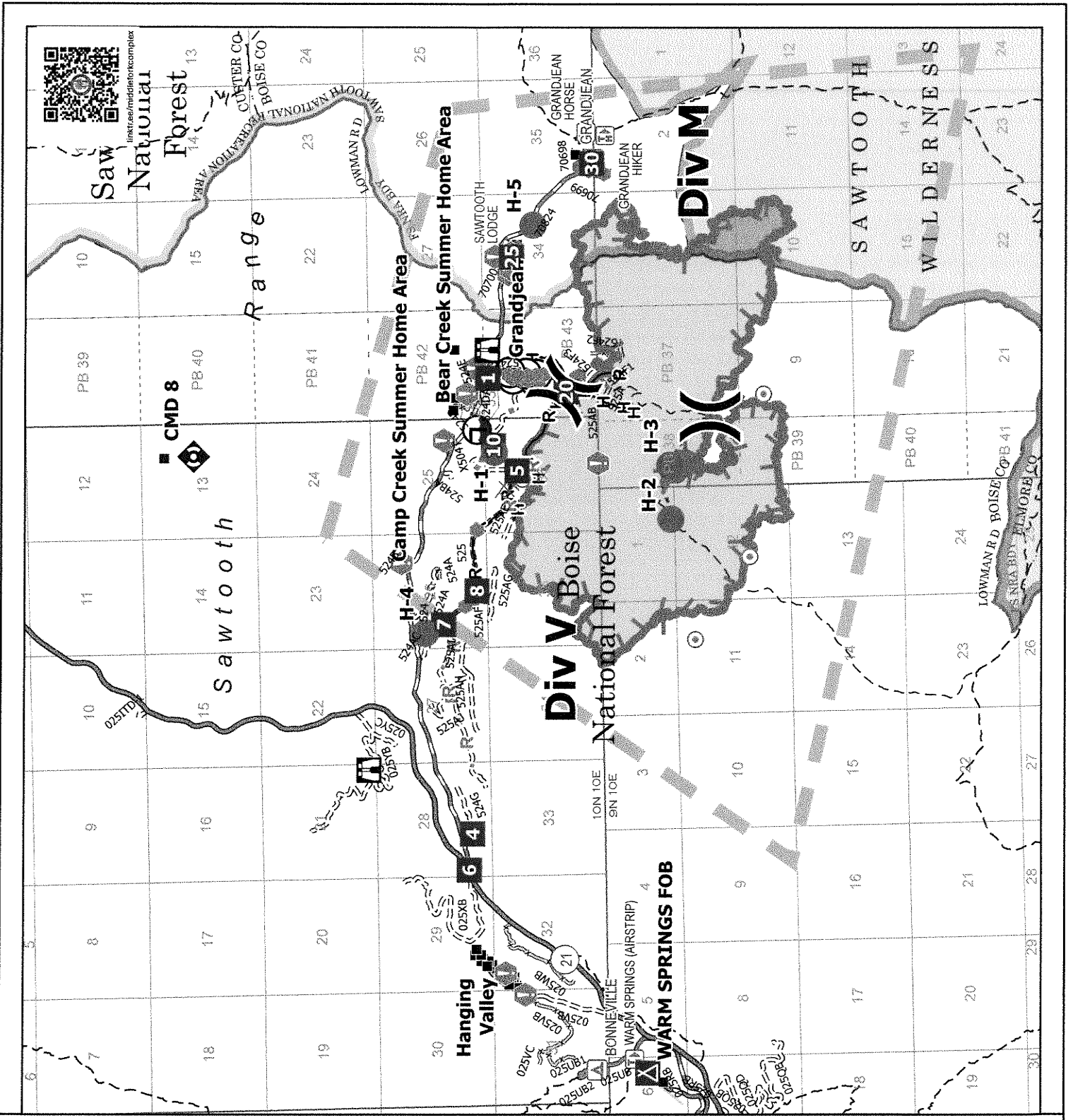
■	Structure
●	Helispot
X	Division Break
■	Drop Point
■	Camp
□	Lookout
⊙	Hot Spot - Spot Fire
⊙	Value at Risk
⊙	Other
⊙	Bridge
⊙	Stream Crossing
⊙	Repeater
⊙	Draft Site
⊙	Hydrant
H-	Completed Hand Line
R-	Completed Road as Line
H	Planned Dozer Line
R	Planned Road as Line
—	Proposed Line
—	Access Route
—	Temporary Flight Restriction
—	Uncontaminated
—	Wildfire Daily Fire Perimeter
—	Secondary Highway
—	Road, Dirt/Gravel
—	Road, Dirt/Gravel
—	Road, high clearance
—	FS Closed Road
—	FS Wilderness Boundary
—	Other Designated Boundary



0 0.5 1 1.5 2  
Miles

1:75,000 | mcaey | 8/15/2024 15:19

North American 1983 Datum, Lat/Long Grid



# Incident Action Plan

BULLTROUT  
 ID-BOF-000699  
 8/16/2024 Day

271 acres at 8/12/2024 2213 hr

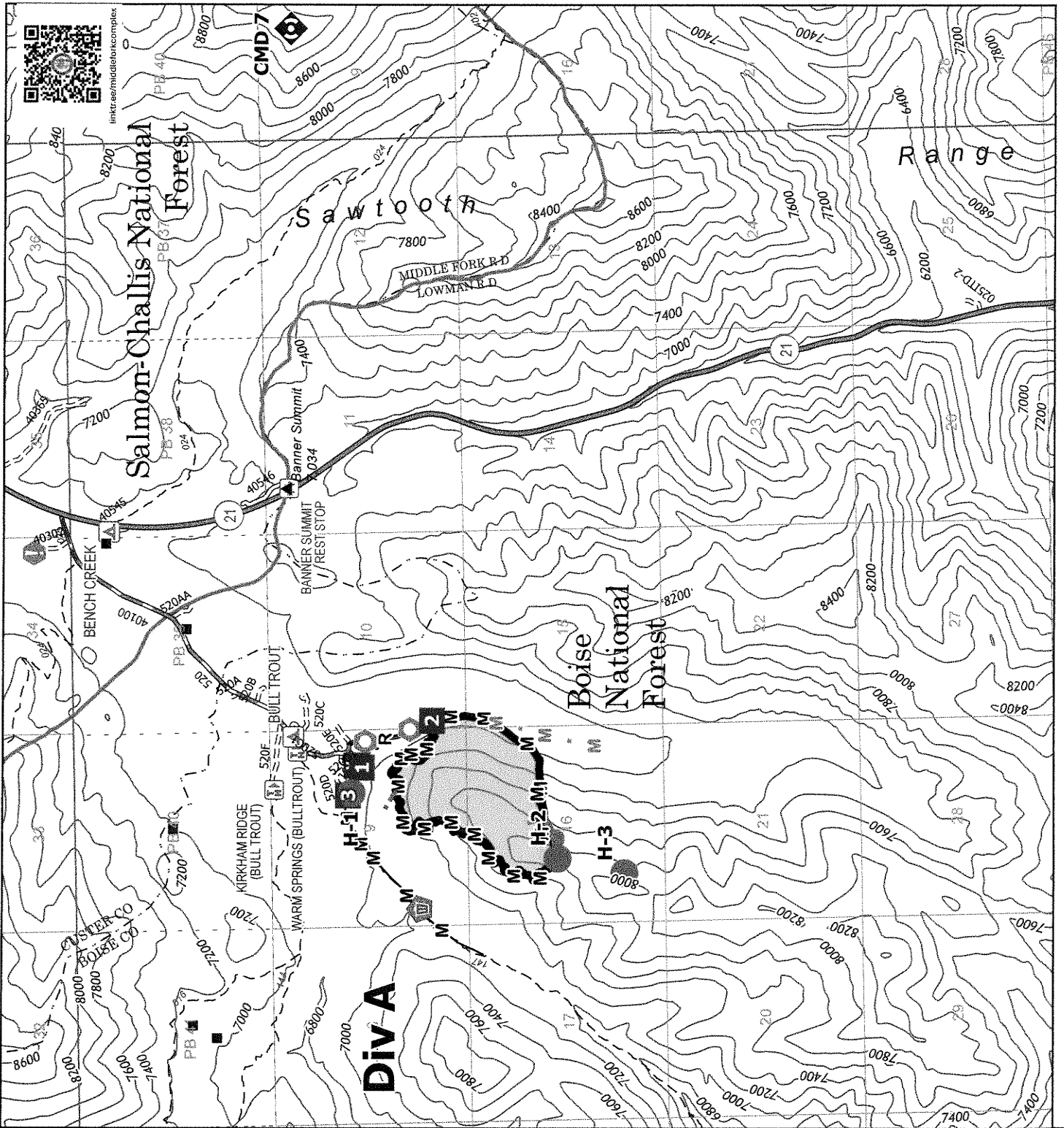
	Structure
	Helispot
	Drop Point
	Camp
	Value at Risk
	Landmark
	Clean Up Area
	Repeater
	Completed Mixed Construction Line
	Completed Road as Line
	Planned Mixed Construction Line
	Other
	Contained
	Uncontained
	Wildfire Daily Fire Perimeter
	Secondary Highway
	Road, Paved
	Road, Dirt/Gravel
	Road, high clearance

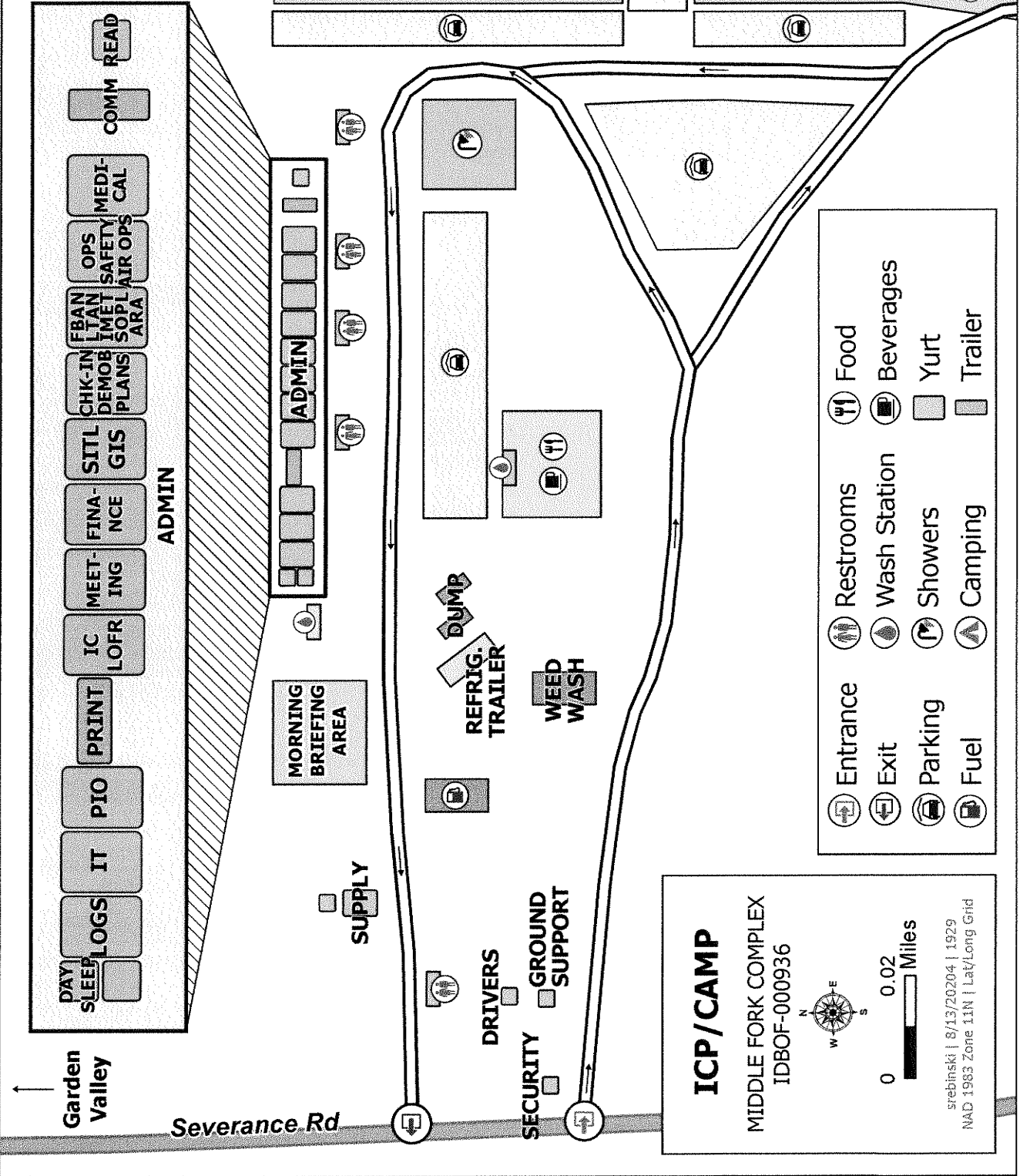


0 0.5 1  
 Miles

1:45,000 | mcaery | 8/15/2024 1520

North American 1983 Datum, Lat/Long Grid





Garden Valley

Severance Rd

DAY SLEEP LOGS

IT

PIO

PRINT

IC LOFR

MEETING

FINANCE

SITL GIS

CHK-IN DEMOB PLANS

FBIAN PLAN

OPS SAFETY

MEDI-CAL

COMM READ

ADMIN

MORNING BRIEFING AREA

SUPPLY

DRIVERS

SECURITY

GROUND SUPPORT

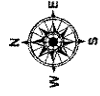
REFRIG. TRAILER

WEEP WASH

DUMP

# ICP/CAMP

MIDDLE FORK COMPLEX  
IDBOF-000936



0 0.02 Miles

srebinski | 8/13/2024 | 1929  
NAD 1983 Zone 11N | Lat/Long Grid

- Entrance
- Exit
- Parking
- Fuel
- Restrooms
- Wash Station
- Showers
- Camping
- Food
- Beverages
- Yurt
- Trailer

Name & Contact # for Person Placing Order:

ORDER # \_\_\_\_\_

### Line Order

Date & Time Order Was Placed		Location and Time for Delivery (Div/LZ/DP/Lat Long)			Mode of Delivery (Ex: Driven/Helo/DIVS to pickup)		
<input type="text"/>		<input type="text"/>			<input type="text"/>		
<input type="text"/>		<input type="text"/>			<input type="text"/>		
#	Item	Quantity	#	Item	Quantity		
1	Meals Breakfast		25	Drip Torch Mix 5gal Mix= 3 1/2gal Diesel : 1 gal Gas			
2	Meals Lunch		26	Line Spike Hygiene Kit			
3	Meals Dinner		27	Backpack Pump			
4	Meals MRE's/case		28	Folding Tank - Size: <input type="text"/>			
5	Water 5 Gal Cubees		29	Pumpkin - Size: <input type="text"/>			
6	Gatorade Case		30	Hose 1 1/2"			
7	Batteries AA Flat		31	Hose 1"			
8	Batteries Specify Type: <input type="text"/>		32	Hose 3/4"			
9	Flagging Rolls		33	Reducer 1 1/2" X 1"			
10	Tarps/Plastic		34	Reducer 1" X 3/4"			
11	Parachute Cord		35	Gated Wye 1 1/2"			
12	Garbage Bags Box		36	Gated Wye 1"			
13	20 Person First Aid Kit		37	Gated Wye 3/4"			
14	Fuel (raw) Diesel 5 Gals		38	Shut Off Valve 3/4"			
15	Fuel (raw) Unleaded 5 Gals		39	In-Line Tee 1 1/2" X 1"			
16	Bar Oil 6 Pack		40	Nozzle 1 1/2" KK			
17	2-cycle oil/pumps Quarts		41	Nozzle 1" Forestry			
18	2-cycle oil/saws		42	Nozzle 3/4" Garden			
19	Tool Shovel		43	Chainsaw Kit			
20	Tool Pulaski		44	Mark 3 Pump w/ Kit (No Fuel) Control# _____			
21	Tool Combi		45	Lightweight Pump w/ Kit (No Fuel) Control# _____			
22	Tool Specify Type: <input type="text"/>						
23	Fusee Case		46	Sprinkler Kit			
24	Drip Torch		47	MISC			
Order Received in Supply by (name):				Time:			
Order Received in Transportation by (name):				Time:			
Order Received in Helibase by (name):				Time:			
Order Shipped to Line Unit by (name):				Time:			

**Clear / Reset**

**Print**

**Save &/or Submit**



**GREAT BASIN CONSUMABLE CHAINSAW PARTS LIST**

PART	034/341	360/MS160	MS361	MS362	038/381	044/MS440	MS441	460/MS461	MS462	MS5001	0640/650	MS660	MS880
Spark Plug (NFESH 000344)	Bosch WSR6F NGK BPMR7A Champion RC16Y	Bosch WSR6F NGK BPMR7A Champion RC16Y	Bosch WSR6F NGK BPMR7A Champion RC16Y	Bosch WSR6F NGK BPMR7A Champion RC16Y	Bosch WSR6F NGK BPMR7A Champion RC16Y	Bosch WSR6F NGK BPMR7A Champion RC16Y	Bosch WSR6F NGK BPMR7A Champion RC16Y	Bosch WSR6F NGK BPMR7A Champion RC16Y	Bosch WSR7AC NGK CMR6H	Bosch USR7AC NGK CMR6H	Bosch WSR6F NGK BPMR7A Champion RC16Y	MS660 NGK BPMR7A Champion RC16Y	MS880 Bosch WSR6F NGK BPMR7A Champion RC16Y
Needle Case Bearing (NFESH 066565)	9512-933-2380 9460-624-0801 0000-958-1022 1125-007-1040	9512-933-2380 9460-624-0801 0000-958-1032 1128-007-1223	9512-933-2380 9460-624-0801 0000-958-1032 1128-007-1000	9512-933-2380 9460-624-0801 0000-958-1032 1128-007-1000	9512-933-2380 9460-624-0801 0000-958-1032 1119-007-1003	9512-933-2380 9460-624-0801 0000-958-1032 1128-007-1000	9512-933-2380 9460-624-0801 0000-958-1032 1128-007-1001	9512-933-2380 9460-624-0801 0000-958-1032 1128-007-1017	9512-933-2380 9460-624-0801 0000-958-1032 1128-007-1000	9512-933-2380 9460-624-0801 0000-958-1032 1128-007-1017	9512-933-2380 9460-624-0801 0000-958-1032 1128-007-1000	9512-933-2382 9460-624-0801 0000-958-1032 1122-007-1000	9512-933-3170 9460-624-1001 0000-958-1236 N/A
Retaining Washer for Rim Sprocket	0000-958-1022 1125-007-1040	0000-958-1022 1125-007-1223	0000-958-1032 1128-007-1000	0000-958-1032 1128-007-1000	0000-958-1032 1119-007-1003	0000-958-1032 1128-007-1000	0000-958-1032 1128-007-1001	0000-958-1032 1128-007-1017	0000-958-1032 1128-007-1000	0000-958-1032 1128-007-1017	0000-958-1032 1122-007-1000	0000-958-1032 1122-007-1001	0000-958-1236 N/A
Rim Sprocket 3/8" - 8T	N/A	N/A	0000-642-1223	0000-642-1223	0000-642-1223	0000-642-1223	0000-642-1223	0000-642-1223	0000-642-1223	0000-642-1223	0000-642-1223	0000-642-1223	N/A
Clutch Drum	N/A	N/A	1128-007-1001	1128-007-1001	N/A	1128-007-1001	1128-007-1001	1128-007-1001	1128-007-1001	1128-007-1001	1128-007-1001	1122-007-1001	1124-007-1025
Rim Sprocket 3/8" - 8T	N/A	0000-642-1216 1125-160-2005 1125-007-1021	0000-642-1216 1128-160-2004 1125-007-1021	0000-642-1216 1138-160-2010 1125-007-1021	0000-642-1216 1119-160-2000 1118-664-1600 1120-664-1500	0000-642-1216 1128-160-2001 1125-007-1021	0000-642-1216 1138-160-2010 1125-007-1021	0000-642-1216 1128-160-2004 1125-007-1021	0000-642-1216 1142-160-2000 1125-007-1021	0000-642-1216 1128-160-2004 1125-007-1021	0000-642-1216 1128-160-2005 1125-007-1022	0000-642-1216 1122-160-2002 1125-007-1021	0000-642-1216 1124-160-2005 1124-007-1008
Chain Adjuster Kit / Spur Gear	N/A	1121-648-6610 1128-190-3400 1125-640-7110 1125-141-2200 0000-350-3504	1121-648-6610 1128-190-3400 1125-640-7112 1135-141-2200 0000-350-3504	1121-648-6610 1128-190-3400 1125-640-7112 1140-140-4401 0000-350-3504	1121-648-6610 1128-190-3400 1119-642-1501 1119-140-2500 0000-350-3504	1121-648-6610 1128-190-3400 1125-640-7112 1128-141-2204 0000-350-3504	1121-648-6610 1128-190-3400 1119-642-1501 1119-140-2500 0000-350-3504	1121-648-6610 1128-190-3400 1125-640-7112 1138-140-2508 0000-350-3504	1121-648-6610 1128-190-3400 1128-640-7112 1147-141-2200 0000-350-3518	1121-648-6610 1128-190-3400 1128-640-7112 1147-141-2200 0000-350-3518	1121-648-6610 1128-190-3400 1128-640-7110 1128-640-7105 1124-141-2200	1121-648-6610 1128-190-3400 1128-640-7105 1122-640-7102 1124-141-2201	1121-648-6610 1128-190-3400 1128-640-7105 1124-640-7512 1124-141-2202 0000-350-3504
Bump Strip	N/A	N/A	N/A	N/A	N/A	N/A	N/A	N/A	N/A	N/A	N/A	N/A	N/A
Starter Rope w/handle	1122-664-1000 0000-955-0801 1125-120-1626	1122-664-1000 0000-955-0801 1125-120-1626	1122-664-1000 0000-955-0801 1140-140-4402	1122-664-1000 0000-955-0801 1140-140-4402	1119-664-1000 0000-955-0801 1119-120-1611	1128-664-1001 0000-955-0801 0000-140-4402	1138-664-1000 0000-955-0801 0000-120-1654	1128-664-1001 0000-955-0801 0000-120-1654	1128-664-1001 0000-955-0801 1142-140-4402	1128-664-1001 0000-955-0801 1142-140-4402	1128-664-1001 0000-955-0801 0000-140-4402	1128-664-1001 0000-955-0801 0000-140-4402	1124-664-1001 0000-955-0801 0000-140-4402
Bar Nut / Collar Nut (NFESH 06661)	N/A	N/A	N/A	N/A	N/A	N/A	N/A	N/A	N/A	N/A	N/A	N/A	N/A
Air Filter - HD (NFESH 066756)	N/A	N/A	N/A	N/A	N/A	N/A	N/A	N/A	N/A	N/A	N/A	N/A	N/A
Pre Filter - OEM	N/A	N/A	N/A	N/A	N/A	N/A	N/A	N/A	N/A	N/A	N/A	N/A	N/A
MaxFlow Air Filter	N/A	N/A	N/A	N/A	N/A	N/A	N/A	N/A	N/A	N/A	N/A	N/A	N/A
Filter Oil	N/A	N/A	N/A	N/A	N/A	N/A	N/A	N/A	N/A	N/A	N/A	N/A	N/A
Filter Cleaner	N/A	N/A	N/A	N/A	N/A	N/A	N/A	N/A	N/A	N/A	N/A	N/A	N/A
Bearing Grease - Tube	N/A	N/A	N/A	N/A	N/A	N/A	N/A	N/A	N/A	N/A	N/A	N/A	N/A
Bar oil - Gallon (NFESH 1880)	N/A	N/A	N/A	N/A	N/A	N/A	N/A	N/A	N/A	N/A	N/A	N/A	N/A
Bar oil - Quart (NFESH 1869)	N/A	N/A	N/A	N/A	N/A	N/A	N/A	N/A	N/A	N/A	N/A	N/A	N/A
2 Cycle Oil - Quart (NFESH 0941)	N/A	N/A	N/A	N/A	N/A	N/A	N/A	N/A	N/A	N/A	N/A	N/A	N/A
Non-Ethanol Fuel	N/A	N/A	N/A	N/A	N/A	N/A	N/A	N/A	N/A	N/A	N/A	N/A	N/A
Fueling Wadges	N/A	N/A	N/A	N/A	N/A	N/A	N/A	N/A	N/A	N/A	N/A	N/A	N/A
6" Pocket - (NFESH 0515)	N/A	N/A	N/A	N/A	N/A	N/A	N/A	N/A	N/A	N/A	N/A	N/A	N/A
8" Smooth - (NFESH 0884)	N/A	N/A	N/A	N/A	N/A	N/A	N/A	N/A	N/A	N/A	N/A	N/A	N/A
8" Rilled - (NFESH 0516)	N/A	N/A	N/A	N/A	N/A	N/A	N/A	N/A	N/A	N/A	N/A	N/A	N/A
12" - (NFESH 02725)	N/A	N/A	N/A	N/A	N/A	N/A	N/A	N/A	N/A	N/A	N/A	N/A	N/A
Round File - 7/32" (NFESH 0945) or 13/64"	N/A	N/A	N/A	N/A	N/A	N/A	N/A	N/A	N/A	N/A	N/A	N/A	N/A
Raker File - 8" Flat File	N/A	N/A	N/A	N/A	N/A	N/A	N/A	N/A	N/A	N/A	N/A	N/A	N/A
Scrench - Combo Wrench (NFESH 0875)	N/A	N/A	N/A	N/A	N/A	N/A	N/A	N/A	N/A	N/A	N/A	N/A	N/A
Chain STIHL Rapid-Super (RS) - 3/8" PITCH - .050" GUAGE	3623-005-0072 3623-005-0084 3623-005-0091	3623-005-0072 3623-005-0084 3623-005-0091	3623-005-0072 3623-005-0084 3623-005-0091	3623-005-0072 3623-005-0084 3623-005-0091	3623-005-0072 3623-005-0084 3623-005-0091	3623-005-0072 3623-005-0084 3623-005-0091	3623-005-0072 3623-005-0084 3623-005-0091	3623-005-0072 3623-005-0084 3623-005-0091	3623-005-0072 3623-005-0084 3623-005-0091	3623-005-0072 3623-005-0084 3623-005-0091	3623-005-0072 3623-005-0084 3623-005-0091	3623-005-0072 3623-005-0084 3623-005-0091	3623-005-0072 3623-005-0084 3623-005-0091
Chain STIHL Rapid-Super-Full Skir (RSF) - 3/8" PITCH - .050" GUAGE	N/A	N/A	N/A	N/A	N/A	N/A	N/A	N/A	N/A	N/A	N/A	N/A	N/A
20" - 72 DR	3676-005-0072	3676-005-0072	3676-005-0072	3676-005-0072	3676-005-0072	3676-005-0072	3676-005-0072	3676-005-0072	3676-005-0072	3676-005-0072	3676-005-0072	3676-005-0072	3676-005-0072
25" - 84 DR	3676-005-0084	3676-005-0084	3676-005-0084	3676-005-0084	3676-005-0084	3676-005-0084	3676-005-0084	3676-005-0084	3676-005-0084	3676-005-0084	3676-005-0084	3676-005-0084	3676-005-0084
28" - 91 DR	3676-005-0091	3676-005-0091	3676-005-0091	3676-005-0091	3676-005-0091	3676-005-0091	3676-005-0091	3676-005-0091	3676-005-0091	3676-005-0091	3676-005-0091	3676-005-0091	3676-005-0091
32" - 105 DR	N/A	N/A	N/A	N/A	N/A	N/A	N/A	N/A	N/A	N/A	N/A	N/A	N/A
Guide Bars (STIHL ROLLOMATIC - ES) - 3/8" PITCH - .050" GUAGE	N/A	N/A	N/A	N/A	N/A	N/A	N/A	N/A	N/A	N/A	N/A	N/A	N/A
20" - 72 DR	3003-000-8822	3003-000-8822	3003-000-8822	3003-000-8822	3003-000-8822	3003-000-8822	3003-000-8822	3003-000-8822	3003-000-8822	3003-000-8822	3003-000-8822	3003-000-8822	3003-000-8822
25" (NFESH 066584)	3003-000-8830	3003-000-8830	3003-000-8830	3003-000-8830	3003-000-8830	3003-000-8830	3003-000-8830	3003-000-8830	3003-000-8830	3003-000-8830	3003-000-8830	3003-000-8830	3003-000-8830
28"	N/A	N/A	N/A	N/A	N/A	N/A	N/A	N/A	N/A	N/A	N/A	N/A	N/A
32"	N/A	N/A	N/A	N/A	N/A	N/A	N/A	N/A	N/A	N/A	N/A	N/A	N/A

The items listed here are considered consumable. Replacement requests for these parts should be filled at the Incident Supply Unit or Local Cache and marked off. If the order is unable to be filled it should be sent to Ordering for \$# assignment and sent to a Buying Team or purchasing support for the incident acquisition, or provided to the requesting resource for fill at the home unit.

Items highlighted in gray should be fillable at most cache locations.

REQUESTING PARTY: If the items you are ordering are not listed above, an OF-296 (Property Loss/Damage Form) MAY be required.

Be descriptive on your orders and fill the order form out completely!





# MEDICAL PLAN (ICS 206 WF)

Controlled Unclassified Information//Basic

## Medical Incident Report

**FOR A NON-EMERGENCY INCIDENT, WORK THROUGH CHAIN OF COMMAND TO REPORT AND TRANSPORT INJURED PERSONNEL AS NECESSARY.**

**FOR A MEDICAL EMERGENCY: IDENTIFY ON SCENE INCIDENT COMMANDER BY NAME AND POSITION AND ANNOUNCE "MEDICAL EMERGENCY" TO INITIATE RESPONSE FROM IMT COMMUNICATIONS/DISPATCH.**

Use the following items to communicate situation to communications/dispatch.

**1. CONTACT COMMUNICATIONS / DISPATCH (Verify correct frequency prior to starting report)**

*Ex: "Communications, Div. Alpha. Stand-by for Emergency Traffic."*

**2. INCIDENT STATUS: Provide incident summary (including number of patients) and command structure.**

*Ex: "Communications, I have a Red priority patient, unconscious, struck by a falling tree. Requesting air ambulance to Forest Road 1 at (Lat./Long.) This will be the Trout Meadow Medical, IC is TFLD Jones. EMT Smith is providing medical care."*

Severity of Emergency / Transport Priority	<input type="checkbox"/> RED / PRIORITY 1 Life or limb threatening injury or illness. Evacuation need is IMMEDIATE <i>Ex: Unconscious, difficulty breathing, bleeding severely, 2<sup>o</sup> – 3<sup>o</sup> burns more than 4 palm sizes, heat stroke, disoriented.</i> <input type="checkbox"/> YELLOW / PRIORITY 2 Serious Injury or illness. Evacuation may be DELAYED if necessary. <i>Ex: Significant trauma, unable to walk, 2<sup>o</sup> – 3<sup>o</sup> burns not more than 1-3 palm sizes.</i> <input type="checkbox"/> GREEN / PRIORITY 3 Minor Injury or illness. Non-Emergency transport <i>Ex: Sprains, strains, minor heat-related illness.</i>	
Nature of Injury or Illness & Mechanism of Injury		Brief Summary of Injury or Illness (Ex: Unconscious, Struck by Falling Tree)
Transport Request		Air Ambulance / Short Haul/Hoist Ground Ambulance / Other
Patient Location		Descriptive Location & Lat. / Long. (WGS84)
Incident Name		Geographic Name + "Medical" (Ex: Trout Meadow Medical)
On-Scene Incident Commander		Name of on-scene IC of Incident within an Incident (Ex: TFLD Jones)
Patient Care		Name of Care Provider (Ex: EMT Smith)

**3. INITIAL PATIENT ASSESSMENT: Complete this section for each patient as applicable (start with the most severe patient)**

Patient Assessment: See IRPG page 106

Treatment:

**4. TRANSPORT PLAN:**

Evacuation Location (if different): (Descriptive Location (drop point, intersection, etc.) or Lat. / Long.) Patient's ETA to Evacuation Location:

Helispot / Extraction Site Size and Hazards:

**5. ADDITIONAL RESOURCES / EQUIPMENT NEEDS:**

*Example: Paramedic/EMT, Crews, Immobilization Devices, AED, Oxygen, Trauma Bag, IV/Fluid(s), Splints, Rope rescue, Wheeled litter, HAZMAT, Extrication*

**6. COMMUNICATIONS: Identify State Air/Ground EMS Frequencies and Hospital Contacts as applicable**

Function	Channel Name/Number	Receive (RX)	Tone/NAC *	Transmit (TX)	Tone/NAC *
COMMAND					
AIR-TO-GRND					
TACTICAL					

**7. CONTINGENCY: Considerations: If primary options fail, what actions can be implemented in conjunction with primary evacuation method? Be thinking ahead.**

**8. ADDITIONAL INFORMATION: Updates/Changes, etc.**

**REMEMBER: Confirm ETA's of resources ordered. Act according to your level of training. Be Alert. Keep Calm. Think Clearly. Act Decisively**