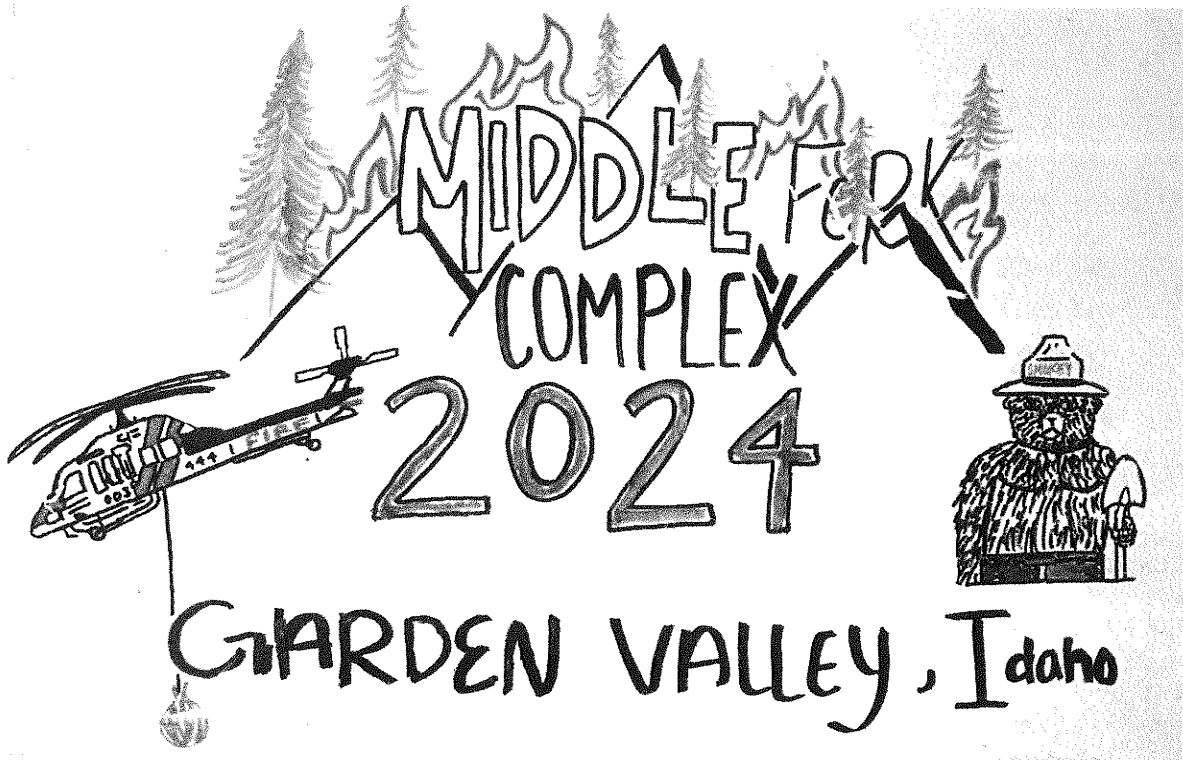


Incident Action Plan



Middle Fork Complex P4R5Y9 (0402) ID-BOF-000936	Wapiti P4R4VV (0402) ID-BOF-000683	Bull Trout P4R4UR (0402) ID-BOF-000699
--	---	---

Sunday August 18, 2024

Day Operations 0700-2100



linktr.ee/middleforkcomplex

Scan QR for Check-in, Demob, IAPs, Maps & Training

INCIDENT OBJECTIVES	1. Incident Names Middle Fork Complex, Wapiti and Bull Trout	2. Date Prepared August 17, 2024	3. Time 2100
----------------------------	---	---	-------------------------------

4. Operational Period: August 18, 2024 Day Operations 0700 - 2100

Incident Objectives

- Execute Strategies to protect the public within the fire planning area by providing timely notification of road, trail and area closures and evacuations to avoid injury or the loss of life.
- Reduce risk to incident responders by assessing and mitigating identified hazards whenever possible, and by only accepting residual risk to responders when protecting highly valued resources and assets when the probability of success is high.
- Utilize confine and point/zone protection strategies in all operational planning and implementation, providing for the highest probability of success and an acceptable level of residual risk to responders to avoid the loss of these highly valued assets.

Incident Requirements

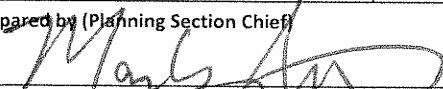
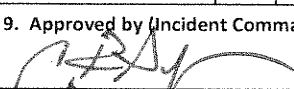
- Provide timely and accurate information to local communities, Boise and Sawtooth National Forests, partners, stakeholders and private landowners.
- Coordinate with Lead READ to protect all known cultural and historic sites from damage by suppression actions.
- Follow Idaho Roadless Area Rule guidance (2008), regarding appropriate suppression actions allowances/approval needs within roadless areas, in consultation with Boise NF lead Resource Advisor.
- Mitigate impacts to Threatened and Endangered species, including Bull trout and Whitebark pine, through coordination with Resource Advisors within the planning area.
- Prevent the spread of invasive aquatic species and noxious weeds by following the Boise National Forest resource mitigation guide, and through additional mitigations identified by Resource Advisors.
- Ensure coordination with Air Resource Advisor on smoke impacts to surrounding communities and incident responders.

Course of Action

- Assess and implement confine and/or contain strategies, utilizing Management Action Points identified in the latest WFDSS decisions for Middle Fork Complex (Bulldog and Nellie), Wapiti and Bull Trout, to trigger when and where to consider additional actions and identify fire management resources necessary for actions.
- Utilize strategic risk analysis to weigh exposure of actions to fire management resource personnel.

8. Attachments (X if attached)

<input checked="" type="checkbox"/>	ICS 203	<input checked="" type="checkbox"/>	Safety Message	<input checked="" type="checkbox"/>	Initial Attack Responsibilities
<input checked="" type="checkbox"/>	Incident Weather Forecast	<input checked="" type="checkbox"/>	ICS 206 Medical Plan	<input checked="" type="checkbox"/>	GB Chainsaw Parts Order Form
<input checked="" type="checkbox"/>	Fire Behavior Forecast	<input checked="" type="checkbox"/>	Resource Advisor Message	<input checked="" type="checkbox"/>	Division Supply Order Form
<input checked="" type="checkbox"/>	ICS 204 Division Assignment Lists	<input checked="" type="checkbox"/>	Demob Message & Tentative List	<input checked="" type="checkbox"/>	Incident and ICP Maps
<input checked="" type="checkbox"/>	ICS 220 Air Operations Summary	<input checked="" type="checkbox"/>	Training Message	<input checked="" type="checkbox"/>	ICS 214 Activity Log
<input checked="" type="checkbox"/>	ICS 205 Incident Radio Comm Plan	<input checked="" type="checkbox"/>	Human Resources Message	<input checked="" type="checkbox"/>	Medical Incident Report – 8 Line

9. Prepared by (Planning Section Chief) 	9. Approved by (Incident Commander) 
---	--

ORGANIZATIONAL ASSIGNMENT LIST (ICS 203)	1. Incident: Middle Fork Complex; Wapiti; Bull Trout	2. Date Prepared: 8/17/2024	
3. Time Prepared: 2000 hrs	4. Operational Period: Sunday August 18, 2024 0700-2100		
5. Incident Commanders		9. Operations Section	
Incident Commander	Rick Connell	Strategic Ops	Paul Diaz
Deputy Incident Commander	Craig Glazier	Planning Ops	Ashley Sites
Safety Officer	Matt Nelson; Mike Cachero; Jonathan White (T)		
Information Officer	Chris Ziegler	a. Branch I	
Liaison Officer	Bryan Donner	Branch Director	Kevin Smith; Ashton Ferruzzi (T)
6. Agency Representatives		Division D	Jessica Vincent; Sam Lewis (T)
Boise Forest Supervisor	Brant Petersen	Division O	unstaffed
Boise Forest Agency Administrator	Jason Kling; John Wallace (T); Chris Waverek (T)	Division P	Nick Peters; Troy Sanders (T)
Idaho Department of Lands	Dean Johnson	Division T	Mike Tuffelmire; Dustin Roper (T)
6b. Cooperators			
Boise County Sheriff	Scott Turner	b. Branch II	
Garden Valley RFD	Paul Cleveland	Branch Director	Adam Carr
7. Planning Section		Division A	Rob Spence
Chief	Mark Glos	Division M	Dave Maclay-Schulte; Javier Kirker (T)
Resource Unit	Patty Bates; Matt Reed (T)	Division V	Dan Helterline; Charlie Fisher (T)
Demob Unit	Sue Puddy		
Situation Unit	Jason Willoughby; Brett Gore	c. Air Operations Branch	
GISS	Jeff Sprovkin; Mitch Carey (T); Marjorie Jerez; Tony McCall (T)	AOBD	Jeff Polack
Fire Behavior Branch I	Mike Pagoaga	ASGS	Steve Croy
Fire Behavior Branch II	Mike Locke		
Incident Meteorologist	Mike Seaman; Luke Rogers (T)	Helibase Mgr	
LTAN	Jon Rieck; Todd Erdody		
SOPL	Justin Pappani; Carolyn Warden (T)	10. Finance Section	
Lead READ	Matt Robinson	Chief	Biddy Simet; Wendy McCartney
Training Specialist	Brian Lamphiear (V)		
Human Resource Specialist	Sherry Neal (V)	Procurement	Tammy Peterson (T)
Air Resource Advisor	Amber Ortega		
ITSS	Michael Harper; Ryan Land (T); Victor Taus (T)	Time Unit Leader	Quoya Waters
8. Logistics Section		Personnel Time	Haleigh Stott; Rhea Warren; Becky Hopkins
Chief	Russell Riebe; Peter Pappas		
Logistics – Warm Springs	Jon Kautt	Equipment Time	Karen Sargeant; Dawn Lint
Supply Unit Leader	Meghan Carosella		
Ordering Manager	Darcy Wheeler (V)	Comp Unit	Quoya Waters
Medical Unit Leader	Rosemary Myers		
Communications	Mike Scherer; Bill Erhardt	Cost Unit	Terry Groesbeck (T)
Food Unit	Justin Trodick (T)		
Facility Unit Leader	Pat Nelson		
Ground Support	Kyler McCarrel	Prepared by Resource Unit Leader:	
Security Manager	John Velsvaag	<i>Patty Bates & Matt Reed</i>	



Fire Weather FORECAST

IMET Contact - (816) 589-0168



FORECAST NO: 8
 PREDICTION FOR: 0700 SUN – 0700 MON
 SHIFT DATE: SUNDAY August 18, 2024

FORECAST ISSUED: 08/17/2024 at 1900
 SIGNED: *Mike Seaman*
 Incident Meteorologist (Mike Seaman)

WEATHER DISCUSSION. The morning inversion will lift early this afternoon allowing RH values to fall below 20% across the fire area by 1400, and remain below 20% through the remainder of the afternoon and early evening. Winds will remain terrain driven across most sheltered areas, with southwest winds spreading across upper ridgelines and into aligned drainages during the afternoon and early evening hours. Temperatures will trend roughly 5 degrees cooler today than what was observed Saturday. With afternoon heating, a few cumulus buildups are possible, and a stray afternoon shower or thunderstorm cannot be ruled out.

FORECAST FOR TODAY:		
	MIDDLE FORK COMPLEX	WAPITI AND BULLTROUT FIRES
SKY/WEATHER	Smoky in the morning then becoming mostly sunny with scattered afternoon cumulus.	Smoky in the morning then becoming mostly sunny with a scattered afternoon cumulus.
MAX TEMPERATURE	Low Elevation (3500 ft): 91-94° F Mid Elevation (4500 ft): 85-88° F High Elevation (7000 ft): 73-76° F	Low Elevation (5000 ft): 83-88° F Mid Elevation (6500 ft): 75-78° F High Elevation (8000 ft): 67-70° F
MIN RELATIVE HUMIDTY	Low Elevation (3500 ft): 13-16% Mid Elevation (4500 ft): 14-17% High Elevation (7000 ft): 16-19%	Low Elevation (5000 ft): 14-17% Mid Elevation (6500 ft): 16-19% High Elevation (8000 ft): 20-23%
GENERAL 20 FT WINDS	Slope/drainage 3-8 mph. Southwest 5-10 mph gusting 15-20 mph after 1400 along exposed ridgelines & through aligned drainages.	Slope/drainage 3-8 mph. Southwest 6-10 mph gusting 15-20 mph after 1400 along exposed ridgelines and through aligned drainages.
INVERSION	Lifting by 1500.	Lifting by 1400.
PM MIXING HEIGHT	17,000 ft MSL	18,000 ft MSL
PM TRANSPORT WIND	South-southwest around 20 mph	South-southwest around 20 mph
PRECIP CHANCE (CWR)	5% (CWR: 1%)	5% (CWR: 1%)
LIGHTNING CHANCE (LAL)	2% (LAL: 1)	2% (LAL: 1)

FORECAST FOR TONIGHT:		
	MIDDLE FORK COMPLEX	WAPITI AND BULLTROUT FIRES
SKY/WEATHER	Partly cloudy in the evening then clearing.	Partly cloudy in the evening then clearing.
MIN TEMPERATURE	Low Elevation (3500 ft): 50-54° F Mid Elevation (4500 ft): 55-58° F High Elevation (7000 ft): 56-59° F	Low Elevation (5000 ft): 47-51° F Mid Elevation (6500 ft): 55-58° F High Elevation (8000 ft): 54-57° F
MAX RELATIVE HUMIDITY	Low Elevation (3500 ft): 55-65% High Elevation (4500 ft): 40-50% High Elevation (7000 ft): 30-40%	Low Elevation (5000 ft): 70-85% Mid Elevation (6500 ft): 30-40% High Elevation (8000 ft): 30-40%
GENERAL 20 FT WINDS	Southwest 4-9 mph until 2000 then downslope / down-drainage 3-8 mph.	Southwest 5-9 mph until 2000 then downslope / down-drainage 3-8 mph
INVERSION	Developing around 2000.	Developing below 6000 feet after 2000. Thermal belt above 6000 ft persisting into overnight hours.
PRECIP CHANCE (CWR)	5% (CWR: 1%)	5% (CWR: 1%)
LIGHTNING CHANCE (LAL)	2%. (LAL: 1)	2% (LAL:1)

Please text or send a picture of your weather observations to the IMET at [435-248-2053](tel:435-248-2053), or email to mike.seaman@noaa.gov. Thank you!

Access IRAWS Weather Observations via Radio (update every 15 minutes)

From the assigned channel, key up the radio & type in the desired station number. The RAWs will transmit the observation back to you.
 Bulldog Fire: IRAWS 13 (3384 ft). Type 0013. Wapiti Fire: IRAWS 18 (6022 ft). Type 0018.
 Nellie Fire: IRAWS 20 (7394 ft). Type 0020. Wapiti Fire (DP10): IRAWS 19 (5088 ft). Type 0019

FIRE BEHAVIOR FORECAST

FORECAST NUMBER: 9	TYPE OF FIRE: Wildland Fire
FIRE NAME: Middle Fork Cmplx, Wapiti, Bull Trout	OPERATIONAL PERIOD: Sunday, 08/18/2024
DATE ISSUED: August 17, 2024	TIME ISSUED: 1900
UNIT: ID-BOF	SIGNED: Mike Pagoaga - FBAN

WEATHER

See Fire Weather Forecast

Temp: 88° RH: 18% 20' Winds: 8 mph, gust 18 ERC: 55 (91%)

*Local Weather Thresholds that shout **WATCH OUT**: Temperatures above 80°, Relative Humidity below 20%, 20' winds above 20 mph, ERC > 61*

FUELS

South slopes are predominantly grass and north slopes are heavily timbered. Rock outcroppings are found throughout the fires and break up fuel continuity. Timber litter, 1000 hr, and fine dead fuels are the main carrier of the fire. Some live woody shrubs are becoming available for consumption. Ceanothus is a waist-high shrub with green waxy leaves. The foliage contains volatile oils that may contribute to fire.

**Live fuel Moistures: Ceanothus = 90% Red Stem = 142% Nine Bark = 123%
Dead 1,000 Hr fuel moisture: 10%**

FIRE BEHAVIOR

General Fire Behavior:

Due to yesterday's activity expect fire to be in further into drainages and potentially aligned with slopes. Generally, there is more fire on the landscape. Hot, dry conditions persist, and fire behavior will remain active. Group torching, spotting with wind and terrain influenced runs after 1500 with clearing. Burn period will extend to at least 2100.

Fine Dead Fuel Moisture: 3% unshaded, 6% shaded
Max Probability of Ignition 90% Spotting distance up to .3 mile with wind gust

Specific Fire Behavior:

Middle Fork Complex:

Bulldog: Fire spread will remain north and east along ridgelines and heavily concentrated fuels. Due to terrain, winds will change directions throughout the day. Group torching, rollout and short-range spotting can be expected.

Nellie: Continued backing with group torching as the fire continues to spread down drainage into West Fork Big Pine Creek and Danskin Creek. Expect activity to increase closer later in the burn period with downslope winds.

Wapiti:

Variable winds throughout the river corridor, will cause sporadic fire growth around Wapiti Creek and the 525 road system. Favorable firing conditions when RH drops below 30%. Live fuels are still resistant to fire spread in DIV V resulting in little movement downslope. Active fire should continue until humidity increases and winds drop, around 2100.

Bull Trout: Smoldering and creeping aided by dryness. No threat to containment expected.

Safety

In addition to more fire being in new areas, previously burned areas, which still have heat, can reburn. Pay attention to where the safe black is located.

DIVISION ASSIGNMENT LIST ICS-204		1. BRANCH I	2. DIVISION/GROUP D
3. INCIDENT NAME Middle Fork Complex		4. OPERATIONAL PERIOD Date: August 18, 2024 Time: 0700 - 2100	

OPERATIONS PERSONNEL

PLANNING OPS: Ashley Sites STRATEGIC OPS: Paul Diaz DIVISION SUPERVISOR: Jessica Vincent; Sam Lewis (T)	BRANCH DIRECTOR: Kevin Smith; Ashton Ferruzzi (T) AIR OPERATIONS BRANCH DIRECTOR: Jeff Polack
---	--

RESOURCES ASSIGNED THIS PERIOD

STRIKE TEAM/TASK FORCE/RESOURCE DESIGNATOR	Last Shift	LEADER	NUMBER PERSONS	DROP OFF POINT/TIME	PICK UP POINT/TIME	
CR2IA Boise Crew 3	C-7	8/19	William Streff	21	ICP / 0700	ICP / 2100
CRW2 IMB Forestry	C-14	8/27	Gorgonio Ibarra	20	ICP / 0700	ICP / 2100
ENG3 ID-BOF-361	Local		Andrew Patita	3	ICP / 0700	ICP / 2100
ENG6 Big State Wildfire	E-91	8/25	James Maillard	3	ICP / 0700	ICP / 2100
ENG6 Cahoon Wildland Fire & Timber	E-92	8/25	Mike Snow	3	ICP / 0700	ICP / 2100
ENG6 NV-HTF Engine 622	E-10	8/21	Skyler Benna-Couttenye	3	ICP / 0700	ICP / 2100
ENG6 Westminister FD	E-110	8/23	Corbin Gray	3	ICP / 0700	ICP / 2100
ENG6 Fireworks	E-125	8/24	Jake Morton	3	ICP / 0700	ICP / 2100
WTT2 Ecosyn Services	E-27	8/26	Cache Phillips	2	ICP / 0700	ICP / 2100
CHP2 Flying V Tree	E-114	8/23	Cody Vincent	3	ICP / 0700	ICP / 2100
FOBS Tim Cusack	O-36.1	8/26		1	ICP / 0700	ICP / 2100
SOFR Matt Martin	O-98	8/29		1	ICP / 0700	ICP / 2100

CONTROL OPERATIONS:

Task: Prep road for holding fire to the east. Use firing operations to keep the fire east of the river/road while moving north until an effective holding point is reached. Assess structures and structure protection needs in the vicinity of Silver Creek.

Purpose: Prevent fire growth to the north and west.

End State: Fire remains to the east of Middle Fork of the Payette River and Silver Creek values are protected.

SPECIAL INSTRUCTIONS:

If the fire moves to the north and threatens to breach MAP 3. Notify DIVS D, Branch I, OSC. Evaluate need to implement point protection measures at campgrounds and infrastructure along Middle Fork Payette River.

FUNCTION	FREQUENCY Rx	FREQUENCY Tx	CHAN	FUNCTION	FREQUENCY Rx	FREQUENCY Tx	CHAN.
TACTICAL	Tac 1	168.0500 (123.0)	168.0500 (123.0)	A/G PRIMARY	BR I	166.6000	166.6000
COMMAND	CMD 10	169.5375 (123.0)	164.7125 (123.0)				
COMMAND							

PREPARED BY (RESOURCE UNIT LEADER) <i>/s/ Patty Bates & Matt Reed, RESL</i>	APPROVED BY (PLANNING SECTION CHIEF) <i>/s/ Mark Glos, PSCC</i>	DATE 8/17/24	TIME 2200
--	--	-----------------	--------------

DIVISION ASSIGNMENT LIST ICS-204		1. BRANCH I	2. DIVISION/GROUP T
3. INCIDENT NAME Middle Fork Complex		4. OPERATIONAL PERIOD Date: August 18, 2024 Time: 0700 - 2100	

OPERATIONS PERSONNEL

PLANNING OPS: Ashley Sites STRATEGIC OPS: Paul Diaz DIVISION SUPERVISOR: Mike Tuffelmire; Dustin Roper (T)	BRANCH DIRECTOR: Kevin Smith; Ashton Ferruzzi (T) AIR OPERATIONS BRANCH DIRECTOR: Jeff Polack
--	--

RESOURCES ASSIGNED THIS PERIOD

STRIKE TEAM/TASK FORCE/RESOURCE DESIGNATOR	Last Shift	LEADER	NUMBER PERSONS	DROP OFF POINT/TIME	PICK UP POINT/TIME	
CRW1 Snake River	C-11	8/24	Ken Bochniak	20	ICP / 0700	ICP/2100
HEQB Sean Loscudo	O-103	8/30		1	ICP / 0700	ICP/2100
DOZ2 Sandhollow Fire Department	E-89	8/29	Toby Hawkins	2	ICP / 0700	ICP/2100
TFLD Joshua Dominguez	O-86	8/27		1	ICP / 0700	ICP/2100
* TFLD Andrew Nielsen (T)	C-7.1	8/19		1	ICP / 0700	ICP/2100
CR2IA Miller Timber	C-8	8/18	Mike Hortert	20	ICP / 0700	ICP/2100
* CRW2 G & C Forestry	C-16	8/21	Luis Vera	20	ICP / 0700	ICP/2100
ENG6 Denver FD Engine 602	E-83	8/19	Jay McCann	3	ICP / 0700	ICP/2100
ENG3 National Wildland Fire	E-80	8/23		3	ICP / 0700	ICP/2100
ENG6 Outback	E-124	8/25	Shane Southwick	3	ICP / 0700	ICP/2100
WTT2 CA-CNF Water Tender 245	E-20	8/25	Joshua Craddock	2	ICP / 0700	ICP/2100
SKG2 Bull Creek Forestry	E-87	8/25	David Bertsch	2	ICP / 0700	ICP/2100
TFLD Cannon Mix	O-8	8/24		1	ICP / 0700	ICP/2100
CR2IA Anthracite	C-5	8/21	Troy Stimaker	20	ICP / 0700	ICP/2100
* ENG3 UT-UWF Engine 321	E-90	8/21	Collin Bertoch	7	ICP / 0700	ICP/2100
CHP2 Flying V Tree	E-9	8/19	Ayrik Fisher	3	ICP / 0700	ICP/2100

CONTROL OPERATIONS:

TASK: Continue to improve/hold direct and indirect lines from the Middle Fork Payette River to the division break on the Lightning Ridge trail.

PURPOSE: Limit fire growth to the south and west.

END STATE: Indirect contingency lines are completed. Structures along the Middle Fork Payette River and the community of Crouch are protected.

** Identified for IA*

SPECIAL INSTRUCTIONS:

If the fire moves to the south into the Lightning Creek drainage with the potential to breach containment lines, Notify DIVS T, Branch I, OSC, LOFR. Notifications to Law Enforcement and Boise County EMS will be made. Evaluate the need for point protection of values within the subdivisions along Middle Fork Payette River.

FUNCTION	FREQUENCY Rx	FREQUENCY Tx	CHAN	FUNCTION	FREQUENCY Rx	FREQUENCY Tx	CHAN.
TACTICAL	Tac 4	166.7250 (123.0)	166.7250 (123.0)	A/G PRIMARY	Br 1	166.6000	166.6000
COMMAND	CMD 10	169.5375 (123.0)	164.7125 (123.0)				
COMMAND							

PREPARED BY (RESOURCE UNIT LEADER) <i>/s/ Patty Bates & Matt Reed, RESL</i>	APPROVED BY (PLANNING SECTION CHIEF) <i>/s/ Mark Glas, PSCC</i>	DATE 8/17/24	TIME 2200
--	--	-----------------	--------------

DIVISION ASSIGNMENT LIST

ICS-204

1. BRANCH

I

2. DIVISION/GROUP

T

page 2 of 2

3. INCIDENT NAME

Middle Fork Complex

4. OPERATIONAL PERIOD

Date: August 18, 2024

Time: 0700 - 2100

OPERATIONS PERSONNEL

PLANNING OPS: Ashley Sites
 STRATEGIC OPS: Paul Diaz
 DIVISION SUPERVISOR: Mike Tuffelmire; Dustin Roper (T)

BRANCH DIRECTOR: Kevin Smith; Ashton Ferruzzi (T)
 AIR OPERATIONS BRANCH DIRECTOR: Jeff Polack

RESOURCES ASSIGNED THIS PERIOD

STRIKE TEAM/TASK FORCE/RESOURCE DESIGNATOR	Last Shift	LEADER	NUMBER PERSONS	DROP OFF POINT/TIME	PICK UP POINT/TIME
SOFR Doug Havlina O-6	8/24		1	ICP / 0700	ICP/2100
EMPF Ethan Biederman O-38	8/24		1	ICP / 0700	ICP/2100
MESU Med Mod #1 E-46	8/31	Kelly Williams	2	ICP / 0700	ICP/2100
REAF Kyle Paffett (T) O-89	8/23		1	ICP / 0700	ICP/2100
REAF Matt Robinson O-67	8/19		1	ICP / 0700	ICP/2100
REAF Tony Papa O-60	8/25		1	ICP / 0700	ICP/2100

CONTROL OPERATIONS:

TASK: Continue to improve/hold direct and indirect lines from the Middle Fork Payette River to the division break on the Lightning Ridge trail.

PURPOSE: Limit fire growth to the south and west.

END STATE: Indirect contingency lines are completed. Structures along the Middle Fork Payette River and the community of Crouch are protected.

** Identified for IA*

SPECIAL INSTRUCTIONS:

If the fire moves to the south into the Lightning Creek drainage with the potential to breach containment lines, Notify DIVS T, Branch I, OSC, LOFR. Notifications to Law Enforcement and Boise County EMS will be made. Evaluate the need for point protection of values within the subdivisions along Middle Fork Payette River.

FUNCTION	FREQUENCY Rx	FREQUENCY Tx	CHAN	FUNCTION	FREQUENCY Rx	FREQUENCY Tx	CHAN.
TACTICAL Tac 4	166.7250 (123.0)	166.7250 (123.0)		A/G PRIMARY Br 1	166.6000	166.6000	
COMMAND CMD 10	169.5375 (123.0)	164.7125 (123.0)					
COMMAND							

PREPARED BY (RESOURCE UNIT LEADER)	APPROVED BY (PLANNING SECTION CHIEF)	DATE	TIME
/s/ Patty Bates & Matt Reed, RESL	/s/ Mark Glas, PSCC	8/17/24	2200

DIVISION ASSIGNMENT LIST

ICS-204

1. BRANCH
I

2. DIVISION/GROUP
P

3. INCIDENT NAME
**Middle Fork Complex
(Nellie)**

4. OPERATIONAL PERIOD
**Date: August 18, 2024
Time: 0700 - 2100**

OPERATIONS PERSONNEL

PLANNING OPS: Ashley Sites
STRATEGIC OPS: Paul Diaz
DIVISION SUPERVISOR: Nick Peters; Troy Sanders (T)

BRANCH DIRECTOR: Kevin Smith; Ashton Ferruzzi (T)
AIR OPERATIONS BRANCH DIRECTOR: Jeff Polack

RESOURCES ASSIGNED THIS PERIOD

STRIKE TEAM/TASK FORCE/RESOURCE DESIGNATOR	Last Shift	LEADER	NUMBER PERSONS	DROP OFF POINT/TIME	PICK UP POINT/TIME
WFM1 Storm Peak Wildland Fire Mod O-36	8/26	Joe Kujala	9	ICP / 0700	ICP / 2100
EMPF Jack Reynoso O-20	8/24		1	ICP / 0700	ICP / 2100

CONTROL OPERATIONS:

Task: Provide for the protection of the Deadwood and Scott Mountain lookouts and the communication tower. Assess opportunities to contain the fire.

Purpose: Prevent damage to historic structures and operational infrastructure. Have potential control lines identified and determine resource needs for operations if/when needed to be implemented.

End State: Values at risk are not damaged by fire and infrastructure affected by the comm tower remains operational.

SPECIAL INSTRUCTIONS:

If the fire moves to the south towards Pine Creek Campground and threatens to breach MAP 6; Notify DIVS P, Branch I, OSC. Depending on fire behavior and rate of spread of the fire, evaluate the need to conduct alternative indirect tactics or consider point protection of values along the Hwy 17 corridor.

FUNCTION		FREQUENCY Rx	FREQUENCY Tx	CHAN	FUNCTION	FREQUENCY Rx	FREQUENCY Tx	CHAN.
TACTICAL	TAC 2	168.2000 (123.0)	168.2000 (123.0)		A/G TERTIARY	170.0250	170.0250	
COMMAND	CMD10	169.5375 (123.0)	164.7125 (123.0)					
COMMAND								

PREPARED BY (RESOURCE UNIT LEADER) <i>/s/ Patty Bates & Matt Reed, RESL</i>	APPROVED BY (PLANNING SECTION CHIEF) <i>/s/ Mark Glas, PSCC</i>	DATE 8/17/24	TIME 2200
--	--	-----------------	--------------

DIVISION ASSIGNMENT LIST <small>ICS-204</small>	1. BRANCH II	2. DIVISION/GROUP A
---	------------------------	-------------------------------

3. INCIDENT NAME Bull Trout	4. OPERATIONAL PERIOD Date: August 18, 2024 Time: 0700 - 2100
---------------------------------------	---

OPERATIONS PERSONNEL

PLANNING OPS: Ashley Sites STRATEGIC OPS: Paul Diaz DIVISION SUPERVISOR: Rob Spence	BRANCH DIRECTOR: Adam Carr AIR OPERATIONS BRANCH DIRECTOR: Jeff Polack
--	---

RESOURCES ASSIGNED THIS PERIOD

STRIKE TEAM/TASK FORCE/RESOURCE DESIGNATOR	Last Shift	LEADER	NUMBER PERSONS	DROP OFF POINT/TIME	PICK UP POINT/TIME
ENG6 Rocky Mountain Fire E-17	8/25		3	Warm Springs 0700	Warm Springs 2100

CONTROL OPERATIONS:

Task: Patrol as necessary. Repair suppression damage. Remove un-needed fire equipment.

Purpose: Maintain and increase containment of the Bull Trout fire. Fix damage caused by fire suppression actions. Be prepared to respond to any increased fire activity while maintaining a safe campground.

End State: Bull Trout fire is controlled in it's current footprint. Damage from suppression actions is returned as nearly as possible to the pre-fire condition. Campers can camp safely in the Bull Trout campground.

SPECIAL INSTRUCTIONS:

Use Field Maps to collect suppression activities and values at risk

FUNCTION		FREQUENCY Rx	FREQUENCY Tx	CHAN	FUNCTION		FREQUENCY Rx	FREQUENCY Tx	CHAN.
TACTICAL	TAC 1	168.0500 (103.5)	168.0500 (103.5)		A/G TERTIARY	BR II	167.0750	167.0750	
COMMAND	CMD 7	168.0125 (103.5)	164.5750 (103.5)						
COMMAND									

PREPARED BY (RESOURCE UNIT LEADER) <i>/s/ Patty Bates & Matt Reed, RESL</i>	APPROVED BY (PLANNING SECTION CHIEF) <i>/s/ Mark Glas, PSCC</i>	DATE 8/17/24	TIME 2200
---	---	------------------------	---------------------

DIVISION ASSIGNMENT LIST ICS-204		1. BRANCH II	2. DIVISION/GROUP M
3. INCIDENT NAME Wapiti		4. OPERATIONAL PERIOD Date: August 18, 2024 Time: 0700 - 2100	

OPERATIONS PERSONNEL	
PLANNING OPS: Ashley Sites STRATEGIC OPS: Paul Diaz DIVISION SUPERVISOR: Dave Macclay-Schulte; Javier Kirker (T)	BRANCH DIRECTOR: Adam Carr AIR OPERATIONS BRANCH DIRECTOR: Jeff Polack

RESOURCES ASSIGNED THIS PERIOD						
STRIKE TEAM/TASK FORCE/RESOURCE DESIGNATOR	Last Shift	LEADER	NUMBER PERSONS	DROP OFF POINT/TIME	PICK UP POINT/TIME	
CRW1 Lolo IHC	C-10	8/26	Shawn Faiella	22	Warm Springs 0700	Warm Springs 2100
ENG6 IPF Engine 621	E-48	8/28	Will Dalby	5	Warm Springs 0700	Warm Springs 2100
ENG6 Axxess Fire	E-11	8/20	Shane Sexton	3	Warm Springs 0700	Warm Springs 2100
ENG3 NV-WID Engine 2309	E-29	8/19	Scott Pace	3	Warm Springs 0700	Warm Springs 2100
ENG3 AAA	E-38	8/26	Vanessa Aldrich	3	Warm Springs 0700	Warm Springs 2100
ENG3 Los Pinos 88	E-53	8/22	David Doucleff	5	Warm Springs 0700	Warm Springs 2100
ENG3 Colorado River Fire Engine 361	E-54	8/24	Zach Niccoli	3	Warm Springs 0700	Warm Springs 2100
WTT2 F4 Fire	E-21	8/25	Craig Fisher	2	Warm Springs 0700	Warm Springs 2100
WTS1 R B & H Enterprises	E-81	8/26	Rob Connell	1	Warm Springs 0700	Warm Springs 2100
TFLD Dan Dosch	E-96.2	8/22		1	Warm Springs 0700	Warm Springs 2100
TFLD Hunter Flinders (T)	E-96.3	8/22		1	Warm Springs 0700	Warm Springs 2100
EMPF Anthony Amoroso	O-27	8/22		1	Warm Springs 0700	Warm Springs 2100

CONTROL OPERATIONS:

TASK: Provide and improve protections for structures and improvements in Wapiti Creek, Sawtooth Lodge, and infrastructure in the Grandjean area. Conduct firing operations based on fire behavior. Patrol / monitor fire perimeter. Ensure fire edge is secured.

PURPOSE: Secure fire line through progressive firing operations to bring the fire to a more favorable fireline location.

END STATE: Ensure that existing structures and infrastructure do not sustain further damage. Provide for safe ingress and egress.

SPECIAL INSTRUCTIONS:

If the fire moves to the north across the 524 road, breaches MAP 2, and becomes established, notify DIVS M, Branch II, and Operations. Evaluate fire behavior and current or expected impacts to HWY 21. Consider adjusting tactics to protect values to the north.

FUNCTION		FREQUENCY Rx	FREQUENCY Tx	CHAN	FUNCTION		FREQUENCY Rx	FREQUENCY Tx	CHAN.
TACTICAL	TAC 3	168.6000 (103.5)	168.6000 (103.5)		A/G PRIMARY	Br II	168.3750	168.3750	
COMMAND	CMD 8	171.8500 (103.5)	162.8000 (103.5)						
COMMAND									

PREPARED BY (RESOURCE UNIT LEADER) <i>/s/ Patty Bates & Matt Reed, RESL</i>	APPROVED BY (PLANNING SECTION CHIEF) <i>/s/ Mark Glos, PSCC</i>	DATE 8/17/24	TIME 2200
--	--	-----------------	--------------

DIVISION ASSIGNMENT LIST ICS-204				1. BRANCH II		2. DIVISION/GROUP V			
3. INCIDENT NAME Wapiti				4. OPERATIONAL PERIOD Date: August 18, 2024 Time: 0700 - 2100					
OPERATIONS PERSONNEL									
PLANNING OPS: Ashley Sites STRATEGIC OPS: Paul Diaz DIVISION SUPERVISOR: Dan Helterline; Charlie Fischer (T)				BRANCH DIRECTOR: Adam Carr AIR OPERATIONS BRANCH DIRECTOR: Jeff Polack					
RESOURCES ASSIGNED THIS PERIOD									
STRIKE TEAM/TASK FORCE/RESOURCE DESIGNATOR			Last Shift	LEADER	NUMBER PERSONS	DROP OFF POINT/TIME	PICK UP POINT/TIME		
CR2IA PatRick	C-9	8/29	Levy Miller	20	Warm Springs 0700	Warm Springs 2100			
ENG5 Flat Rock	E-93	8/25	Cody Blair	3	Warm Springs 0700	Warm Springs 2100			
ENG5 Three Rivers	E-41	8/25	Murray Hannaweeka	3	Warm Springs 0700	Warm Springs 2100			
ENG6 ESB Management	E-39	8/26	Matt Nickle	3	Warm Springs 0700	Warm Springs 2100			
ENG6 Northern Utah Fire	E-111	8/25	Anthony Gordon	3	Warm Springs 0700	Warm Springs 2100			
WTT2 Treasure Valley	E-116	8/26	John Van Auken	2	Warm Springs 0700	Warm Springs 2100			
WTS2 Dust Buster	E-12	8/28	Paul Kurzeborn	1	Warm Springs 0700	Warm Springs 2100			
WTS2 Allens	E-42	8/28	Dave Shaw	1	Warm Springs 0700	Warm Springs 2100			
TFLD Nick Clark (T)	O-33.32	8/22		1	Warm Springs 0700	Warm Springs 2100			
TFLD Sean Weston	O-29	8/21		1	Warm Springs 0700	Warm Springs 2100			
TFLD Dustin Mireles (T)	O-85	8/28		1	Warm Springs 0700	Warm Springs 2100			
SOFR Fred Johnson	O-99	8/30							
EMPF Jeff Ullrey	O-19	8/24		1	Warm Springs 0700	Warm Springs 2100			
AMB2 Fireline Ambo #1	E-5	8/30	Andy Belcher	2	Warm Springs 0700	Warm Springs 2100			
REAF Garry Brown	O-22	8/23		1	Warm Springs 0700	Warm Springs 2100			
REAF Ryan Santo	O-23	8/23		1	Warm Springs 0700	Warm Springs 2100			
ARCH Joe Bergstrom	O-71	8/21		1	Warm Springs 0700	Warm Springs 2100			
REAF Lucas Roy (T)	O-72	8/19		1	Warm Springs 0700	Warm Springs 2100			
CONTROL OPERATIONS:									
Task: Provide and improve protections for structures and improvements in Bear Creek, Camp Creek and infrastructure in the Grandjean area. Conduct firing operations based on fire behavior. Patrol / monitor fire perimeter. Ensure fire edge is secured.									
Purpose: Secure fire line through progressive firing operations to bring the fire to a more favorable fireline location.									
End State: Existing structures and infrastructure do not sustain further damage. Safe ingress and egress is ensured.									
SPECIAL INSTRUCTIONS:									
<i>If the fire moves to the north across the 524 road, breaches MAP 2, and becomes established, notify DIVS V, Branch II, and Operations. Evaluate fire behavior and current or expected impacts to HWY 21. Consider adjusting tactics to protect values to the north.</i>									
<i>If the fire moves to the west across Wolf Creek, breaches MAP 3, and becomes established, notify DIVS V, Branch II, and Operations. Evaluate fire behavior and the need to protect values in Hanging Valley, Bonneville Campground, and Warm Springs Cabin. Evaluate current of expected impacts to HWY 21.</i>									
FUNCTION		FREQUENCY Rx	FREQUENCY Tx	CHAN	FUNCTION		FREQUENCY Rx	FREQUENCY Tx	CHAN.
TACTICAL	TAC 2	168.2000 (103.5)	168.2000 (103.5)		A/G PRIMARY	Br II	168.3750	168.3750	
COMMAND	CMD 8	171.8500 (103.5)	162.8000 (103.5)						
COMMAND									
PREPARED BY (RESOURCE UNIT LEADER)				APPROVED BY (PLANNING SECTION CHIEF)		DATE	TIME		
/s/ Patty Bates & Matt Reed, RESL				/s/ Mark Glas, PSCC		8/17/24	2200		

AIR OPERATIONS SUMMARY ICS-220

Incident Name / Number Middle Fork Complex / ID-BOF-000936 Wapiti / ID-BOF-000683 Bull Trout / ID-BOF-000699	Sunrise 6:51	Sunset 20:43	Civil: Garden Valley HB 21:13	Time Prepared 1900	Shutdown Sunset	Date Prepared 8/17/2024	Operational Period - Date 8/18/2024	Prepared By Jeff Polack - AOB	Operational Period - Time 0700-2100
---	-----------------	-----------------	----------------------------------	-----------------------	--------------------	----------------------------	--	----------------------------------	--

General Remarks, Safety Notes, Hazards, Air Operations Special Equipment, etc.
All GPS data will be collected in DD° MM.MMM'

- Pilots/flight crews discuss inclement weather plans.
- Aircraft will cease tactical operations by sunset. Ferry flights are allowed during 30 minutes after sunset. This is due to reduced visibility caused by smoke and topography.
- Absolutely clear drop arealines before initiating drop sequence.
- You may see or hear a UAV (drone) on/over your division. We will have one operating over the Complex. Any questions, confirm with your DIVS.
- As always - if you see something questionable, say something!!!

Incident Frequencies	RX	Tone	TX	Tone	AM/FM	Position	Name	Phone	
B1 AVG Primary (Buildog)	166.6000	-	166.6000	-	FM	AOBD	Jeff Polack	208-816-3447	
B1 AVG Secondary (Buildog)	169.2000	-	169.2000	-	FM	ASGS	Steve Croy	540-230-2568	
B1 AVG Tertiary (Nellie)	170.0250	-	170.0250	-	AM	ASGS(t)			
B2 AVG Primary (Wapiti)	168.3750	-	168.3750	-	FM	HEBM	Gunnar Cahal	208-731-3683	
B2 AVG Secondary (Wapiti)	172.4500	-	172.4500	-	FM	HEBM(t)			
B2 AVG Tertiary (Bull Trout)	167.0750	-	167.0750	-	FM	UASP	Matt Gosney	928-598-2780	
Deck	163.1000	-	163.1000	-	FM	UASP	Robert Ordonez	907-370-9259	
Air Guard	168.6250	-	168.6250	-	FM				
State Comm (EMS F2)	155.2800	-	155.2800	156.7	FM				
Air-to-Air									
Wapiti - A/A TFR	120.1250	NA	120.1250	NA	AM				
Wapiti - A/A Secondary	125.9750	NA	125.9750	NA	AM				
Buildog - A/A TFR	126.8250	NA	126.8250	NA	AM				
Buildog - A/A Secondary	133.0250	NA	133.0250	NA	AM				
Nellie - A/A TFR	123.6000	NA	123.6000	NA	AM				
Bull Trout - A/A TFR	123.4000	NA	123.4000	NA	AM				

HELICOPTERS (Garden Valley Helibase)

FAA #	Type	Make/Model	Helibase	Avail	Start	Remarks	FAA #	TYPE	Make/Model	Helibase	Avail	Start	Remarks
N132BH	3	AS-350B3	Garden Valley	Y	0830	EU/Crew w/ bucket	N767NA	1	Kaman/Kmax	Cascade	Y	8:30	Bucket
N530NC	2	B-212S	Garden Valley	Y	0830	EU/Crew w/ bucket	N563DJ	1	UH-60A	Cascade	Y	8:30	Bucket
N205LM	2	B-208 A++	Garden Valley	Y	0830	EU/Crew w/ bucket	N9696W	1	S-61A	Cascade	Y	8:30	Bucket
N2773H	2	B-205 A++	Garden Valley	Y	0830	EU/Crew w/ bucket	N357CR	1	UH-60A	Cascade	Y	8:30	Bucket
N699RH	1	Kaman/Kmax	Garden Valley	Y	0830	Bucket	N402PJ	3	B-407	Stanley	Y	8:30	Bucket Recon
N14ANS	3	AS-350B3	Garden Valley	Y	0830	EU/Crew/bucket							

LOAN / LEASE HELICOPTERS (Cascade Helibase / West Mountain Complex)

FAA #	Type	Model	Call Sign	Avail	Start	Remarks	FAA #	Type	Make/Model	Base	Avail	Start	Remarks
FA3AC3MMNIZE	3	Alta X	UR-31			PSD, IR / EO							
FA3F3P7EL	3	M600	UR-32			IR / EO							

UNMANNED AIRCRAFT SYSTEMS

FAA #	Type	Model	Call Sign	Avail	Start	Remarks	FAA #	Type	Make/Model	Base	Avail	Start	Remarks
FA3AC3MMNIZE	3	Alta X	UR-31			PSD, IR / EO							
FA3F3P7EL	3	M600	UR-32			IR / EO							

FIXED WING

FAA #	Type	Make/Model	Base	Avail	Start	Remarks

Helibase Information
 Name: Garden Valley
 Latitude: 44° 03.849'
 Longitude: 115° 55.508'
 Elevation: 3177'
 Note: adjacent to Garden Valley Airport (U88)

TFR/NOTAM Information
 All TFR's updated 8-16-2024
 Bull Trout 4/9763
 Freq: 123.4000 9.5K msl 2 nm radius
 Bulldog 4/6484
 Freq: 126.825 11K msl 24hrs.
 Nellie 4/6485
 Freq: 123.6 11K msl, 24hrs.
 Wapiti 4/6486
 Freq: 120.125 12.5K msl 24hrs.
 NOTAM Warm Sogs Ck Airport (OU1)
 #08/120 runway closed, fire aircraft only, Aug. 10th thru Aug 24th

Extraction / Medivac (helicopter)
 All air medivac requests will be requested and coordinated thru Boise (ID-BOF) Dispatch.
 Short-Haul:
 1) Teton Helitack, N35HX, West Mtn Complex, Cascade, ID airport (Unavailable 08/18/24)
 2) Krassel Short-Haul, N353SH, large fire support, McCall, ID airport

Email costs to:
2024.middleforkcomplex.finance@fire.net.gov
<http://fr.faa.gov/ft/2/jlisl.html>

INCIDENT RADIO COMMUNICATIONS PLAN I-205

1. INCIDENT NAME	2. DATE/TIME PREPARED	3. OPERATIONAL PERIOD DATE/TIME
Middle Fork Complex BRANCH ONE	8/17/24 1500	8/18/24 0700 - 2100

4. BASIC RADIO CHANNEL UTILIZATION

Ch #	Function	Channel Name	Assignment	RX Freq	N/W	RX Tone/NAC	TX Freq	N/W	TX Tone/NAC	Mode Analog (A) Digital (D) Mixed (M)	Remarks
1	TAC	TAC 1	DIV D	168.0500	N	123.0	168.0500	N	123.0	A	BULLDOG
2	TAC	TAC 2	DIV P	168.2000	N	123.0	168.2000	N	123.0	A	NELLIE
3	TAC	TAC 3	DIV O	168.6000	N	123.0	168.6000	N	123.0	A	BULLDOG
4	TAC	TAC 4	DIV T	166.7250	N	123.0	166.7250	N	123.0	A	BULLDOG
5	TAC	TAC 5	UN	168.7750	N	123.0	168.7750	N	123.0	A	UNASSIGNED
6	WEATHER	RAWS	BRANCH 1	163.3500	N	NONE	163.3500	N	NONE	A	REMOTE AUTOMATED WEATHER STATION
7	COMMAND	CMD 7	BRANCH 2	168.0125	N	103.5	164.5750	N	103.5	A	S OF COPPER (BULL TROUT)
8	COMMAND	CMD 8	BRANCH 2	171.8500	N	103.5	162.8000	N	103.5	A	ZUMWALT MTN (WAPITI)
9	COMMAND	CMD 9	BRANCH 1	170.4500	N	123.0	168.1000	N	123.0	A	JACKSON LOOKOUT
10	COMMAND	CMD 10	BRANCH 1	169.5375	N	123.0	164.7125	N	123.0	A	SCOTT LOOKOUT
11	COMMAND	BOF NORTH REPEAT		171.4500	N	NONE	164.1625	N	156.7	A	BOF N REPEAT WHITEHAWK (TONE 7)
12	A/G	A/G PRI		166.6000	N	NONE	166.6000	N	NONE	A	BRANCH 1 BULLDOG A/G PRIMARY
13	A/G	A/G SEC		169.2000	N	NONE	169.2000	N	NONE	A	BRANCH 1 BULLDOG A/G SECONDARY
14	A/G	A/G TER		170.0250	N	NONE	170.0250	N	NONE	A	BRANCH 1 NELLIE A/G TERTIARY
15	MEDEVAC A/G	ST COMM EMS		155.2800	N	NONE	155.2800	N	156.7	A	STATE COMM (EMS)
16	AIRGUARD	AIR GRD		168.6250	N		168.6250	N	110.9	A	EMERGENCY USE ONLY

5. Special Instructions: TO UTILIZE CHANNEL 6 RAWS PRESS THE PUSH TO TALK BUTTON, ON THE KEY PAD ENTER 0013 FOR BULLDOG OR 0020 FOR NELLIE AREAS WHILE TRANSMITTING. RELEASE PUSH TO TALK AND RAWS STATION WILL REPLY WITH LOCAL WEATHER OBSERVATION

6. I-205 Prepared By: Communications Unit Leader Name: MIKE SCHERER Signature: PAUL SCHERER
Digitally signed by PAUL SCHERER Date: 2024.08.17 19:38:48 -0700

INCIDENT RADIO COMMUNICATIONS PLAN I-205											
4. BASIC RADIO CHANNEL UTILIZATION											
1. INCIDENT NAME											
BRANCH TWO Wapiti/Bull Trout											
2. DATE/TIME PREPARED											
8/17/24 1500											
3. OPERATIONAL PERIOD DATE/TIME											
8/18/24 0700 - 2100											
Ch #	Function	Channel Name	Assignment	RX Freq	N/W	RX Tone/NAC	TX Freq	N/W	TX Tone/NAC	Mode Analog (A) Digital (D) Mixed (M)	Remarks
1	TAC	TAC 1	DIV A	168.0500	N	103.5	168.0500	N	103.5	A	BULL TROUT
2	TAC	TAC 2	DIV V	168.2000	N	103.5	168.2000	N	103.5	A	WAPITI
3	TAC	TAC 3	DIV M	168.6000	N	103.5	168.6000	N	103.5	A	WAPITI
4	TAC	TAC 4	UN	166.7250	N	103.5	166.7250	N	103.5	A	UNASSIGNED
5	TAC	TAC 5	UN	168.7750	N	103.5	168.7750	N	103.5	A	UNASSIGNED
6	TAC	TAC 6	UN	168.2500	N	103.5	168.2500	N	103.5	A	UNASSIGNED
7	COMMAND	CMD 7	BRANCH 2	168.0125	N	103.5	164.5750	N	103.5	A	S OF COPPER (BULL TROUT)
8	COMMAND	CMD 8	BRANCH 2	171.8500	N	103.5	162.8000	N	103.5	A	ZUMWALT MTN (WAPITI)
9	COMMAND	CMD 9	BRANCH 1	170.4500	N	123.0	168.1000	N	123.0	A	JACKSON LOOKOUT
10	COMMAND	CMD 10	BRANCH 1	169.5375	N	123.0	164.7125	N	123.0	A	SCOTT LOOKOUT
11	WEATHER	RAWS	BRANCH II	163.3500	N	NONE	163.3500	N	NONE	A	REMOTE AUTOMATED WEATHER STATION
12	A/G	A/G PRI		168.3750	N	NONE	168.3750	N	NONE	A	BRANCH 2 WAPITI A/G PRIMARY
13	A/G	A/G SEC		172.4500	N	NONE	172.4500	N	NONE	A	BRANCH 2 WAPITI A/G SECONDARY
14	A/G	A/G TER		167.0750	N	NONE	167.0750	N	NONE	A	BRANCH 2 BULL TROUT A/G TERTIARY
15	MEDEVAC A/G	ST COMM EMS		155.2800	N	NONE	155.2800	N	156.7	A	STATE COMM (EMS)
16	AIRGUARD	AIRGUARD		168.6250	N		168.6250	N	110.9	A	EMERGENCY USE ONLY

5. Special Instructions: TO UTILIZE CHANNEL 6 RAWS PRESS THE PUSH TO TALK BUTTON. ON THE KEY PAD ENTER 0018 OR 0019 WHILE TRANSMITTING. RELEASE PUSH TO TALK AND RAWS STATION WILL REPLY WITH LOCAL WEATHER OBSERVATION

6. I-205 Prepared By: Communications Unit Leader Name: MIKE SCHERER Signature: PAUL SCHERER

Digitally signed by PAUL SCHERER
Date: 2024.08.17 19:38:14 -0700

ID-BOF Middle Fork Complex, Wapiti and Bull Trout Fires Initial Attack Responsibility and Procedures

The following applies to all IA responses:

- Relay the initial coordinates and size up information (if applicable) to the Incident's Communications Unit.
- The Communications Unit will take the coordinates to the Situation Unit to plot and determine if the new start is in/out of the IA responsibility area.
- The Communications Unit will notify Planning Operations of the potential new IA.
- If requested, the Planning Operations will update the jurisdictional Duty Officer.
- Incident Communications Unit will notify the jurisdictional dispatch office of the new start, to provide an initial size-up and inform the jurisdictional dispatch of the resources responding.
- In all cases, IA will be documented using the appropriate Incident Organizer and be given to the local agency representative upon arrival on scene, in camp or sent to the respective jurisdictional dispatch center.
- Air resources obtaining size up information must communicate that on the Air to Ground frequency due to other incidents in the area and potential of crossing over. Ground resources will deliver size up information to the Communications Unit on Command frequency.

Fires within the IA Responsibility Area:

- All communications will be handled through the Incident's Communications Unit.
- The initial size up will be relayed to Line Operations, who will send appropriate identified resources.
- All requests for additional resources must be approved by Line Operations.
- Northern Rockies CIM Team 5 will manage the fire until it is suppressed completely, turned over to local resources, or the agency administrator makes a different decision regarding its management.
- If the jurisdictional dispatch office identifies a potential new start within the delegated incident IA response area, dispatch will notify the Incident's Communications Unit and all above procedures will be implemented.

Fires outside the IA Responsibility Area:

- The respective jurisdictional dispatch office will dispatch resources to the fire per dispatch procedures unless otherwise requested by the Duty Officer for the jurisdictional Agency.
- The jurisdictional duty officer may request team resources (aviation or ground) through the Incident's Communications Unit as approved by Line Operations.
- If incident's resources are utilized, and arrive on-scene first, they will provide a size up to the incident Communications Unit. The Communications Unit will, in turn, provide intel/information to the jurisdictional dispatch center.
- The jurisdictional dispatch office will provide the Air-to-Air frequency to all dispatched aviation resources to communicate with Air Attack.
- Jurisdictional responding ground resources will be given the frequencies to the appropriate fire incident (Middle Fork Complex, Wapiti and/or Bull Trout), to provide positive communications with all resources responding.
- Aviation resources may go direct to the jurisdictional dispatch office for their notification and size up but must also notify the Incident's Communications Unit, in coordination with the incident Air Attack.



SAFETY MESSAGE 8/18/24

- Driving will always be a concern whether on road or off road. Watch your speeds and pay attention to road conditions and wildlife.
- Promote overall well-being by making sure you are eating proper and getting enough sleep. Continue personal hygiene to avoid any chance of getting camp crud or the pesky flu bug. I'm starting to hear more coughing in camp lately.

OOPS!















SAFETY OFFICERS: MATT NELSON, JONATHAN WHITE, MIKE CACHERO

MEDICAL PLAN (ICS 206 WF)

Controlled Unclassified Information//Basic

1. Incident/Project Name				2. Operational Period				
Middle Fork Complex, Wapiti, Bull Trout				08/18/24 0700-2100				
3. Ambulance Services								
Name	Complete Address	Phone & EMS Frequency	Advanced Life Support (ALS)					
			Yes	No				
Lowman Emergency Services	8000 ID 21 Lowman ID 83637	911	<input type="checkbox"/>	<input checked="" type="checkbox"/>				
Garden Valley Fire	373 S Middle Fork Rd, Garden Valley ID 83622	911	<input checked="" type="checkbox"/>	<input type="checkbox"/>				
4. Air Ambulance Services								
Name	Contact	Type of Aircraft & Capability						
35HX (Teton) at Cascade Helibase 1469 Main St, Cascade, ID 83611	Boise Dispatch 208-384-3398	AS350B3e; Short-haul, BLS Medevac, Hospital Transport, Day Only						
3SH (Krassel) at McCall Helibase 605 S. Mission St, McCall, Idaho 83638	Payette Dispatch 208-425-8613	AS350B3e; Short-haul, Medevac, Hospital Transport, Day Only						
Life Flight Inc.	(800) 232-0911	Bell 407, ALS, Night Capable						
Air St. Luke's	(208) 381-8900	Bell 429, ALS, Night Capable, Fixed Wing						
5. Hospitals								
Name & Address	GPS Datum – WGS 84 Degrees Decimal Minutes DD° MM.MM' N – Lat DD° MM.MM' W – Long	Travel Time	Phone	Helipad		Level of Care		
		Air Ground		Yes	No			
Garden Valley Family Med 856 Banks Lowman Road Garden Valley, ID 83622	Lat: 44° 06.06' N	15 MIN	Direct Line 208-462-3533	<input checked="" type="checkbox"/>	<input type="checkbox"/>	Family Medical Clinic		
	Long: 115° 58.07' W	N/A						
	VHF: F2, Boise Dispatch	30 MIN						
St. Alphonsus Hospital 1055 N Curtis Rd Boise, ID 83706	Lat: 43° 36.79' N	45 MIN	ER Desk 208-367-3223, EMS report 208-367-6479	<input checked="" type="checkbox"/>	<input type="checkbox"/>	Level II Trauma		
	Long: 116° 15.29' W	FAA# ID91						
	VHF: F2, Boise Dispatch	2 HRS						
St. Luke's Medical Center 190 E. Bannock St. Boise, ID 83712	Lat: 43° 36.77' N	45 MIN	208-381-2222	<input checked="" type="checkbox"/>	<input type="checkbox"/>	Critical Care Hospital		
	Long: 116° 11.51' W	FAA# ID49						
	VHF: F2, Boise Dispatch	2 HRS						
EIRMC Burn Center 3100 Channing Way Idaho Falls, ID 83404	Lat: 43° 29.4' N	2 HRS	Direct Line 208-529-7986	<input checked="" type="checkbox"/>	<input type="checkbox"/>	Level III/ Burn Center		
	Long: 112° 01.8' W	FAA# ID18						
	VHF:	5 HRS						
University of Utah 50 Medical Dr N Salt Lake City, UT 84132	Lat: 40° 46.32 N	3 HRS	(801) 581-2241	<input checked="" type="checkbox"/>	<input type="checkbox"/>	Level I / Burn Center		
	Long: 111° 50.30 W	FAA# UT21						
	VHF:	6 HRS						
Division Branch Group		Area Location Capability						
Middle Fork Complex ICP 85 Severance Rd, Garden Valley, ID 83622		EMS Responders & Capability:		Rosemary Myers, AEMT/MEDL BLS, Steven Kendley, EMTF/MEDL(t), Emily Nemore, EMTF/MEDL(t)				
		Equipment Available on Scene:		IV, AED, O2				
7. Name & Location		Remote Camp Location: Warm Springs Air Strip Rd						
FOB Warm Springs Air Strip Warm Springs, ID 83637		EMS Responders & Capability:		Andrea Colson, EMTF/MEDL, Ray Mines EMTF/MEDL(t), Ryan Jones, EMP/MEDL(t), ALS Meds				
		Equipment Available on Scene:		IV, AED, O2				
8. Prepared By (Medical Unit Leader)			Date/Time		10. Reviewed By (Safety Officer)			11. Date/Time
Steven Kendley MEDL (t)			08/17/24 1140 hrs		/S/ MATTHEW L. NELSON			08/17/24 1440

Finance Message	Human Resources Message				
<p>Please ensure that you use the correct email address.....otherwise, your goodies go to a fire with a similar name in Oregon!</p> <p>Will the following resources please pay us a visit beneath the Jolly Roger:</p> <ul style="list-style-type: none"> • C-14, IMB Forestry • C-8, Miller Timber Services • E-92, Cahoon Wildland Fire • E-115, Crimson Sky Trucking • E-80, National Wildland Fire • E-42, Pine Rim • E-81, RB+H 	<p style="text-align: center;">RESPECT</p> <p>Every interaction is an opportunity to earn the respect of others.</p> <ul style="list-style-type: none"> • I lead by example, treating fellow firefighters with respect, and denouncing disrespect. • I find and value diverse skills within the team. • I communicate openly and keep others informed. • I look out for the well-being of myself and colleagues. <p style="text-align: center;">My team, my fire family</p> <p style="text-align: center;">Sherry Neal and Mollie, HRSP (virtual) (801) 791-0044</p>				
Logistics	INFORMATION				
<p>ICP Meal Times: Breakfast: 0600 - 0900 Dinner: 1800 - 2100</p> <p>Showers: 0530 – 1200 1400 – 2200</p>	<p>We need photos to share your great work! Send to 2024.middleforkcomplex@firenet.gov or visit a Public Information Officer in camp and include a brief description of the photo.</p>				
INCIDENT CONTACTS					
<p>Ordering: 2024.middleforkcomplex.ordering@firenet.gov</p> <p>Finance: 2024.middleforkcomplex.finance@firenet.gov (208) 867-9570</p> <p>DMOB 2024.middleforkcomplex.demob@firenet.gov (208) 891-7653</p> <p>INFO 2024.middleforkcomplex@firenet.gov (208) 992-3045</p>	<p>Lost and found is located at the Middle Fork Complex ICP Information Yurt.</p> <p style="text-align: center;"><i>Thank You!</i></p> <table border="1" data-bbox="846 1438 1502 1900"> <tr> <td data-bbox="846 1438 1209 1648"> <p style="text-align: center;">Middle Fork Complex</p>  </td> <td data-bbox="1209 1438 1502 1648"> <p style="text-align: center;">Wapiti</p>  </td> </tr> <tr> <td data-bbox="846 1648 1209 1900"> <p style="text-align: center;">Bull Trout</p>  </td> <td data-bbox="1209 1648 1502 1900"> <p style="text-align: center;">Boise Forest</p>  </td> </tr> </table>	<p style="text-align: center;">Middle Fork Complex</p> 	<p style="text-align: center;">Wapiti</p> 	<p style="text-align: center;">Bull Trout</p> 	<p style="text-align: center;">Boise Forest</p> 
<p style="text-align: center;">Middle Fork Complex</p> 	<p style="text-align: center;">Wapiti</p> 				
<p style="text-align: center;">Bull Trout</p> 	<p style="text-align: center;">Boise Forest</p> 				

RESOURCE ADVISOR MESSAGE

PROTECTING WHITEBARK PINE

Needles of five, keep it alive!

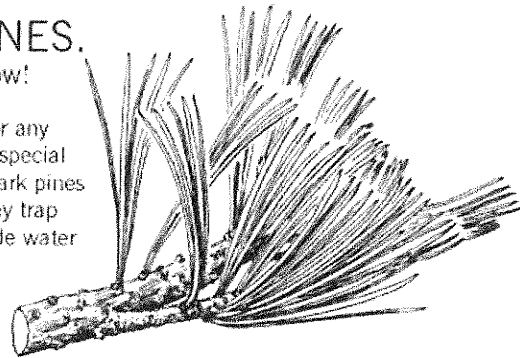
Please do not cut WHITEBARK PINES.

If a tree's needles grow in clusters of five, leave it to grow!

Whitebark pines live in the mountains, often in areas too harsh for any other tree. More than 100 kinds of living things depend on these special pines, including bears and many bird species. People love whitebark pines for their beauty and strength, and we also need them because they trap snow in the high country, slowing spring runoff and helping provide water to the valleys in summer.

But whitebark pines are in trouble. Many whitebark forests now contain more dead pines than living ones.

- Blister rust, a non-native fungus, weakens the trees, reduces cone production, and eventually causes death.
- Whitebarks are also killed by bark beetles, and beetle epidemics may increase with global climate change.
- Wildfires may kill whitebark pines, although burned areas are good habitat for seedlings. Careful management of fire is essential.



So remember: *If it has five, let's keep it alive!*

For more information and to learn how you can help,
visit the Whitebark Pine Ecosystem Foundation at www.whitebarkfound.org.

- Whitebark grow mostly above 7000'
- The Majority of WBP is in Div P
- When possible remove subalpine pine competition around WBP

RESULTS

← Before



After →



TENTATIVE DEMOB SCHEDULE

AUGUST 18

Incident / Request Number	Resource	Demob Time
Middle Fork Complex/O-33.72	EQTR Tamala Carter	
Middle Fork Complex/O-33.73	PTRC Ashley Johnson	
Middle Fork Complex/O-33.74	PTRC Victoria Davis	
Middle Fork Complex/C-8	HC2IA Miller Timber Services	
Middle Fork Complex/E-86	ENG6 Aspen FPD Brush 61	
Wapiti/E-17	WTS2 Clear Water River	
Bull Trout/O-26	EMTF Adventure Medics	

AUGUST 19

Incident / Request Number	Resource	Demob Time
Wapiti/O-20	SEC1 John Sims	
Middle Fork Complex/O-100	SEC1 Ryan Balentine	

AUGUST 20

Incident / Request Number	Resource	Demob Time
Wapiti/E-9	CHP2 Flying V Tree	
Middle Fork Complex/E-83	ENG6 Denver FPD Brush 61	
Middle Fork Complex/C-7	HC2IA Boise Crew 3	
Middle Fork Complex/O-39	BCMG Daniel Nation	
Middle Fork Complex/O-40	ICT4 Sam Lewis	
Middle Fork Complex/O-67	REAF Matt Robinson	
Middle Fork Complex/O-72	REAF Lukas Roy	
Wapiti/E-29	ENG3 NV-WID Engine 2309	
Bull Trout/E-7	STK1 Dennis Debill	

DEMOB STEPS

Review the schedule for your assigned check out time and date. On your Demob Day (or before), complete the following items:

- FINANCE first visit: **IF** you have any remaining documents required by Finance (i.e., shift tickets, CTRs, contracts, AD paperwork, pre & post equipment inspections). **PLEASE TURN THEM IN NOW.** Then Finance will work on them.
- SUPPLY: Return any items checked out from Supply.
- COMM: Return any items checked out from Comm.
- TRAINEES: Please close via QR code.
- FINANCE second visit: Get your signed Finance Documents.
- WEED WASH: Complete Weed Wash.
- DEMOB: Visit Demob or **Scan the Demob QR code to complete Demob.** If all above steps are, completed you will then be released from this incident so to be available for the next one.



DEMOB REQUIRING FLIGHTS



If you are flying, please contact DMOB at least 3 days in advance of your Demob. Use the QR code, call, text or email the following: ✓ Name on ID ✓ gender ✓ email for itinerary ✓ phone number ✓ date and time you are able to leave ICP ✓ date of flights ✓ airports you are flying to and from and ✓ suggested flights and frequent flying number (optional)

If you have any questions or need any help, contact DMOB at (208) 891-7380

2024.middleforkcomplex.demob@firenet.gov

Incident Action Plan

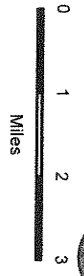
MIDDLE FORK COMPLEX

ID-BOF-000936

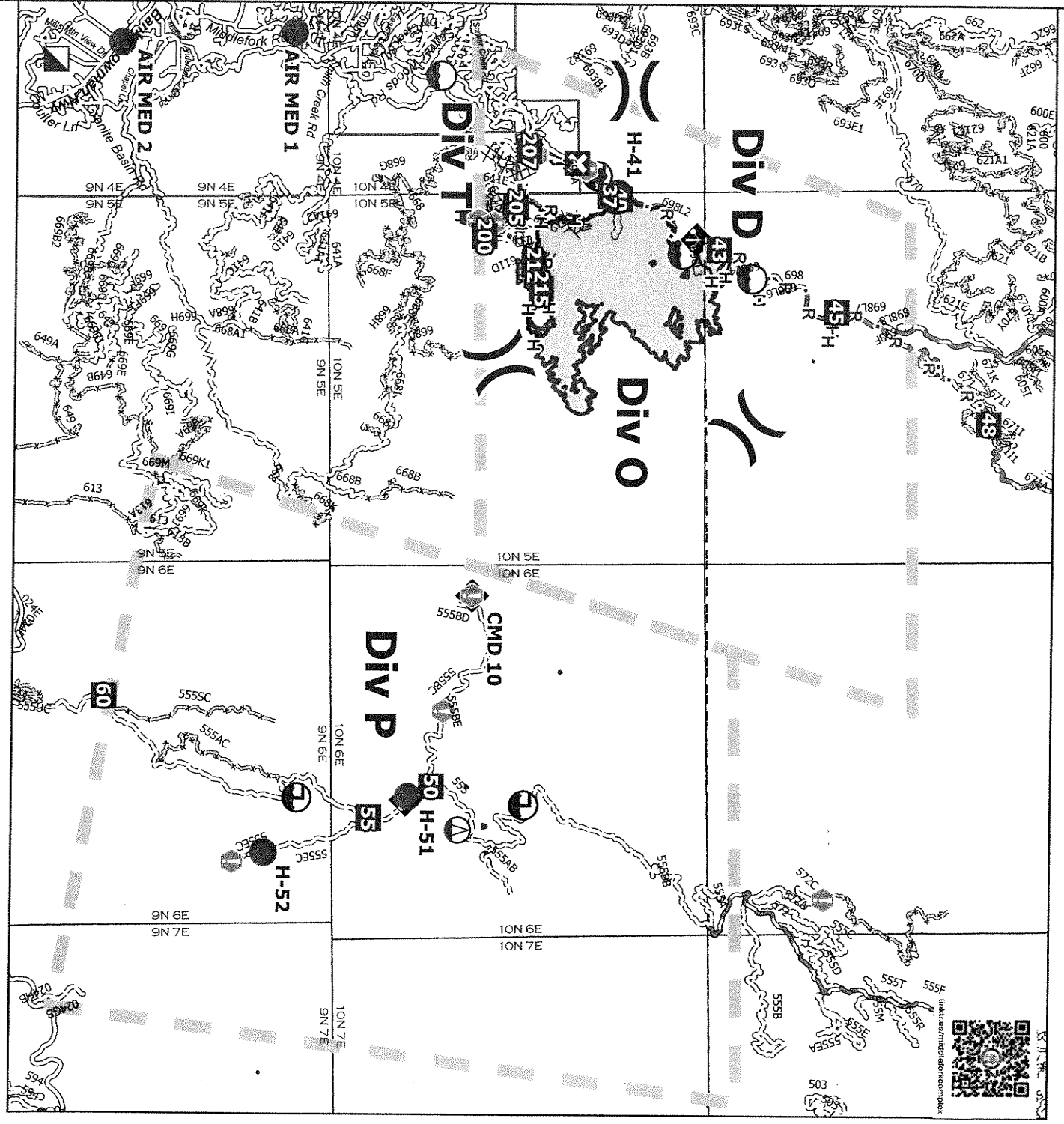
8/18/2024 Day

10,631 acres

●	Helispot
○	Sling Site
h	Division Break
2A	Incident Command Post
2B	Drop Point
2C	Closure
M	Camp
⊕	Value at Risk
⊖	Gale
⊕	Bridge
⊖	Road Repair
⊕	Repair Point
⊖	Culvert
⊕	Mobile Weather Unit
⊖	Repeater
⊕	Hazard
⊖	Dip Site
⊕	Draft Site
⊖	Completed Dozer Line
⊕	Completed Hand Line
⊖	Planned Dozer Line
⊕	Planned Hand Line
M	Planned Mixed Construction Line
R	Proposed Road as Line
---	Proposed Line
---	Access Route
---	Road Repair
---	Temporary Flight Restriction
---	Wildfire Daily Fire Perimeter
---	Secondary Highway
---	Road
---	Road, Paved
---	Road, Dirt/Gravel
---	Road, high Clearance
---	Road, Closed
---	Road, Paved
---	Road, Dirt/Gravel
---	Road, high clearance
---	FS Closed Road



1:140,000 | mearey | 8/17/2024 1354
North American 1983 Datum, Lat/Long Grid

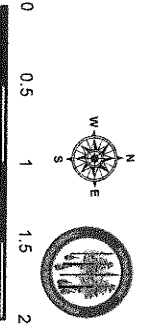


linktr.ee/middleforkcomplex

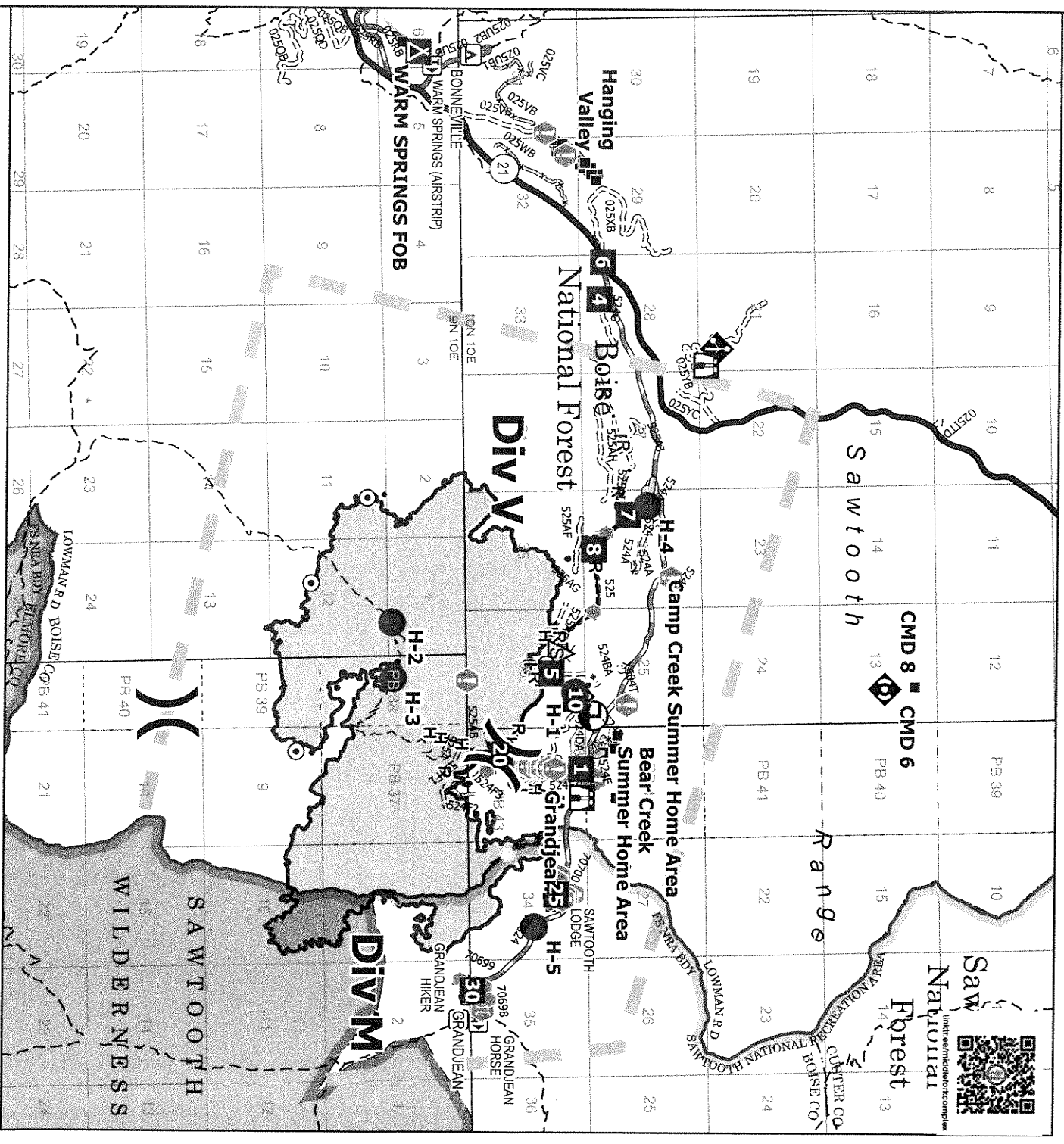
Incident Action Plan

WAPITTI
 ID-BOF-000683
 8/18/2024 Day
 4116 acres

- Structure
- Helispot
- ✕ Division Break
- Drop Point
- Camp
- Lookout
- ⊙ Hot Spot - Spot Fire
- ⊕ Value at Risk
- Other
- ⌒ Bridge
- ⬇ Stream Crossing
- ⬇ Mobile Weather Unit
- ⬇ Repeater
- ⬆ Safety Zone
- ▲ Dirt Site
- H- Completed Hand Line
- H- Completed Mixed Construction Line
- R- Completed Road as Line
- H- Planned Dozer Line
- H- Planned Hand Line
- R- Planned Road as Line
- ⌒ Proposed Line
- ⌒ Access Route
- ⌒ Highlighted Feature
- ⌒ Temporary Flight Restriction
- ⌒ Wildfire Daily Fire Perimeter
- ⌒ Secondary Highway
- ⌒ Road, Dirt/Gravel
- ⌒ Road, Dirt/Gravel
- ⌒ Road, high clearance
- ⌒ FS Closed Road
- ⌒ FS Wilderness Boundary
- ⌒ Other Designated Boundary



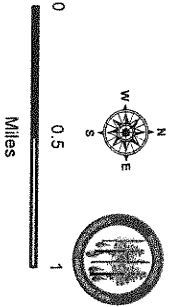
1:75,000 | incary | 8/17/2024 1354
 North American 1983 Datum, LatLong Grid



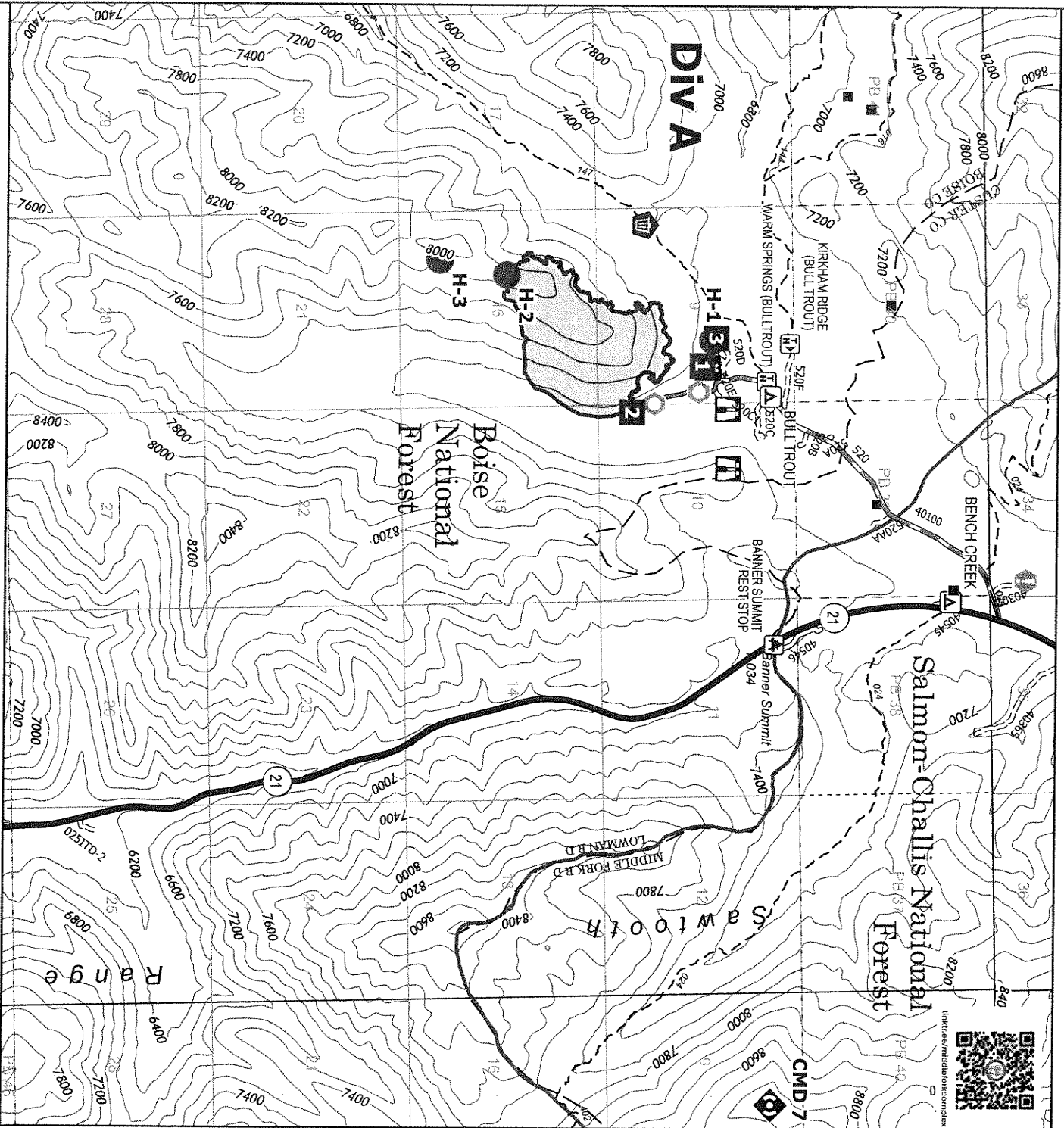
Incident Action Plan

BULLTROUT
 ID-BOF-000699
 8/18/2024 Day
 271 acres

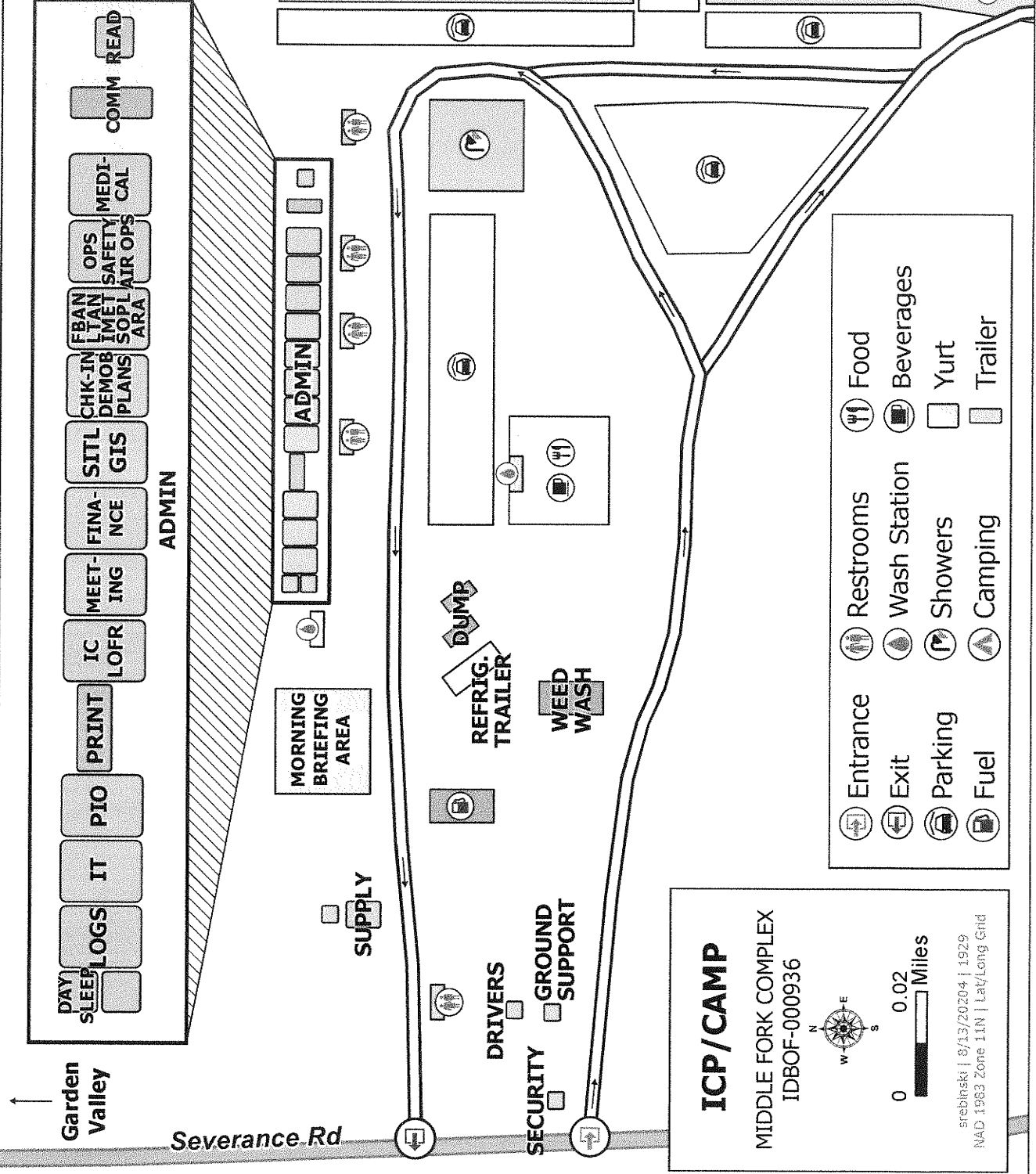
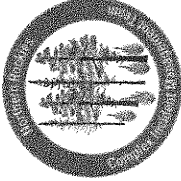
- Structure
- Helispot
- Drop Point
- M Camp
- Lookout
- Value at Risk
- Clean Up Area
- ⬇ Repeater
- ⬇ Wildfire Daily Fire Perimeter
- ▬ Secondary Highway
- ▬ Road, Paved
- ▬ Road, Dirt/Gravel
- ⋯ Road, high clearance



1:45,000 | ncarvey | 8/17/2024 1602
 North American 1983 Datum, LatLong Grid



linktr.ee/middleforkcomplex



- DAY SLEEP
- LOGS
- IT
- PIO
- PRINT
- IC LOFR
- MEETING
- FINANCE
- SITL GIS
- CHK-IN DEMOB PLANS
- FBAN LITAN IMET SOPL ATR OPS ARA
- OPS SAFETY
- MEDI-CAL
- COMM READ

ADMIN

MORNING BRIEFING AREA

SUPPLY

DRIVERS

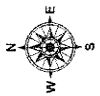
SECURITY GROUND SUPPORT

DUMP REFRIG. TRAILER

WEED WASH

ICP/CAMP

MIDDLE FORK COMPLEX
IDBOF-000936



0 0.02 Miles

srebinski | 8/13/20204 | 1929
NAD 1983 Zone 11N | Lat/Long Grid

- Entrance
- Restrooms
- Wash Station
- Showers
- Camping
- Food
- Beverages
- Yurt
- Trailer

Garden Valley

Severance Rd

Name & Contact # for Person Placing Order:

ORDER # _____

Line Order

Date & Time Order Was Placed	Location and Time for Delivery (Div/LZ/DP/Lat Long)	Mode of Delivery (Ex: Driven/Helo/DIVS to pickup)
<input type="text"/>		

#	Item	Quantity	#	Item	Quantity
1	Meals Breakfast		25	Drip Torch Mix 5gal Mix= 3 1/2gal Diesel : 1 gal Gas	
2	Meals Lunch		26	Line Spike Hygiene Kit	
3	Meals Dinner		27	Backpack Pump	
4	Meals MRE's/case		28	Folding Tank - Size: <input type="text"/>	
5	Water 5 Gal Cubees		29	Pumpkin - Size: <input type="text"/>	
6	Gatorade Case		30	Hose 1 1/2"	
7	Batteries AA Flat		31	Hose 1"	
8	Batteries Specify Type: <input type="text"/>		32	Hose 3/4"	
9	Flagging Rolls		33	Reducer 1 1/2" X 1"	
10	Tarps/Plastic		34	Reducer 1" X 3/4"	
11	Parachute Cord		35	Gated Wye 1 1/2"	
12	Garbage Bags Box		36	Gated Wye 1"	
13	20 Person First Aid Kit		37	Gated Wye 3/4"	
14	Fuel (raw) Diesel 5 Gals		38	Shut Off Valve 3/4"	
15	Fuel (raw) Unleaded 5 Gals		39	In-Line Tee 1 1/2" X 1"	
16	Bar Oil 6 Pack		40	Nozzle 1 1/2" KK	
17	2-cycle oil/pumps Quarts		41	Nozzle 1" Forestry	
18	2-cycle oil/saws		42	Nozzle 3/4" Garden	
19	Tool Shovel		43	Chainsaw Kit	
20	Tool Pulaski		44	Mark 3 Pump w/ Kit (No Fuel) Control# _____	
21	Tool Combi		45	Lightweight Pump w/ Kit (No Fuel) Control# _____	
22	Tool Specify Type: <input type="text"/>				
23	Fusee Case		46	Sprinkler Kit	
24	Drip Torch		47	MISC	

Order Received in Supply by (name):	Time:
Order Received in Transportation by (name):	Time:
Order Received in Helibase by(name):	Time:
Order Shipped to Line Unit by (name):	Time:

Clear / Reset

Print

Save &/or Submit

GREAT BASIN CONSUMABLE CHAINSAW PARTS LIST

PART	034/341	MS362	MS361	MS360	MS361	MS362	038/381	044/MS440	MS441	MS462	MS500H	0640/650	MS560	MS880	
Spark Plug (NFESH 000344)	Bosch WSR6F NGK BPMR7A Champion RC6JY	Bosch WSR6F NGK BPMR7A Champion RC6JY	Bosch WSR6F NGK BPMR7A Champion RC6JY	Bosch WSR6F NGK BPMR7A Champion RC6JY	Bosch WSR6F NGK BPMR7A Champion RC6JY	Bosch WSR6F NGK BPMR7A Champion RC6JY	Bosch WSR6F NGK BPMR7A Champion RC6JY	Bosch WSR6F NGK BPMR7A Champion RC6JY	Bosch WSR6F NGK BPMR7A Champion RC6JY	Bosch WSR6F NGK BPMR7A Champion RC6JY	Bosch WSR6F NGK BPMR7A Champion RC6JY	Bosch WSR6F NGK BPMR7A Champion RC6JY	Bosch WSR6F NGK BPMR7A Champion RC6JY	Bosch WSR6F NGK BPMR7A Champion RC6JY	
Needle Cage Bearing (NFESH 066565)	9512-933-2380 9460-624-0801 0000-958-1032 1125-007-1040	9512-933-2380 9460-624-0801 0000-958-1032 1125-007-1022	9512-933-2380 9460-624-0801 0000-958-1032 1125-007-1001	9512-933-2380 9460-624-0801 0000-958-1032 1125-007-1001	9512-933-2380 9460-624-0801 0000-958-1032 1125-007-1001	9512-933-2380 9460-624-0801 0000-958-1032 1125-007-1001	9512-933-2380 9460-624-0801 0000-958-1032 1125-007-1001	9512-933-2380 9460-624-0801 0000-958-1032 1125-007-1001	9512-933-2380 9460-624-0801 0000-958-1032 1125-007-1001	9512-933-2380 9460-624-0801 0000-958-1032 1125-007-1001	9512-933-2380 9460-624-0801 0000-958-1032 1125-007-1001	9512-933-2380 9460-624-0801 0000-958-1032 1125-007-1001	9512-933-2380 9460-624-0801 0000-958-1032 1125-007-1001	9512-933-2380 9460-624-0801 0000-958-1032 1125-007-1001	
Retaining Washer for Rim Sprocket	0000-958-1022 1125-007-1040	0000-958-1022 1125-007-1022	0000-958-1022 1125-007-1001	0000-958-1022 1125-007-1001	0000-958-1022 1125-007-1001	0000-958-1022 1125-007-1001	0000-958-1022 1125-007-1001	0000-958-1022 1125-007-1001	0000-958-1022 1125-007-1001	0000-958-1022 1125-007-1001	0000-958-1022 1125-007-1001	0000-958-1022 1125-007-1001	0000-958-1022 1125-007-1001	0000-958-1022 1125-007-1001	
Rim Sprocket Kit 3/8" - 71	0000-642-1231 N/A	0000-642-1232 N/A	0000-642-1233 N/A	0000-642-1233 N/A	0000-642-1233 N/A	0000-642-1233 N/A	0000-642-1233 N/A	0000-642-1233 N/A	0000-642-1233 N/A	0000-642-1233 N/A	0000-642-1233 N/A	0000-642-1233 N/A	0000-642-1233 N/A	0000-642-1233 N/A	
Rim Sprocket Kit 3/8" - 8T	0000-642-1231 N/A	0000-642-1232 N/A	0000-642-1233 N/A	0000-642-1233 N/A	0000-642-1233 N/A	0000-642-1233 N/A	0000-642-1233 N/A	0000-642-1233 N/A	0000-642-1233 N/A	0000-642-1233 N/A	0000-642-1233 N/A	0000-642-1233 N/A	0000-642-1233 N/A	0000-642-1233 N/A	
Clutch Drum	N/A	N/A	N/A	N/A	N/A	N/A	N/A	N/A	N/A	N/A	N/A	N/A	N/A	N/A	
Rim Sprocket 3/8" - 8T	N/A	N/A	N/A	N/A	N/A	N/A	N/A	N/A	N/A	N/A	N/A	N/A	N/A	N/A	
Clutch	1127-160-2050 1125-160-2005 1125-007-1036	0000-642-1216 1128-160-2004 1125-007-1021	0000-642-1216 1128-160-2004 1125-007-1021	0000-642-1216 1128-160-2004 1125-007-1021	0000-642-1216 1128-160-2004 1125-007-1021	0000-642-1216 1128-160-2004 1125-007-1021	0000-642-1216 1128-160-2004 1125-007-1021	0000-642-1216 1128-160-2004 1125-007-1021	0000-642-1216 1128-160-2004 1125-007-1021	0000-642-1216 1128-160-2004 1125-007-1021	0000-642-1216 1128-160-2004 1125-007-1021	0000-642-1216 1128-160-2004 1125-007-1021	0000-642-1216 1128-160-2004 1125-007-1021	0000-642-1216 1128-160-2004 1125-007-1021	0000-642-1216 1128-160-2004 1125-007-1021
Chain Adjuster Kit / Spur Gear	1125-007-1021	1125-007-1021	1125-007-1021	1125-007-1021	1125-007-1021	1125-007-1021	1125-007-1021	1125-007-1021	1125-007-1021	1125-007-1021	1125-007-1021	1125-007-1021	1125-007-1021	1125-007-1021	
Bump Stop	1121-648-6610	1121-648-6610	1121-648-6610	1121-648-6610	1121-648-6610	1121-648-6610	1121-648-6610	1121-648-6610	1121-648-6610	1121-648-6610	1121-648-6610	1121-648-6610	1121-648-6610	1121-648-6610	
Starter Rope w/handle	1128-190-3400	1128-190-3400	1128-190-3400	1128-190-3400	1128-190-3400	1128-190-3400	1128-190-3400	1128-190-3400	1128-190-3400	1128-190-3400	1128-190-3400	1128-190-3400	1128-190-3400	1128-190-3400	
Worm Gear (Oilier)	1125-640-7110	1125-640-7112	1125-640-7112	1125-640-7112	1125-640-7112	1125-640-7112	1125-640-7112	1125-640-7112	1125-640-7112	1125-640-7112	1125-640-7112	1125-640-7112	1125-640-7112	1125-640-7112	
Manifold Boot	1125-141-2200	1135-141-2200	1135-141-2200	1135-141-2200	1135-141-2200	1135-141-2200	1135-141-2200	1135-141-2200	1135-141-2200	1135-141-2200	1135-141-2200	1135-141-2200	1135-141-2200	1135-141-2200	
Fuel Filter / Pickup Body	0000-350-3504	0000-350-3504	0000-350-3504	0000-350-3504	0000-350-3504	0000-350-3504	0000-350-3504	0000-350-3504	0000-350-3504	0000-350-3504	0000-350-3504	0000-350-3504	0000-350-3504	0000-350-3504	
Tank Vent	N/A	N/A	N/A	N/A	N/A	N/A	N/A	N/A	N/A	N/A	N/A	N/A	N/A	N/A	
Caps for Fuel Injection Pump	1122-664-1000	1122-664-1000	1122-664-1000	1122-664-1000	1122-664-1000	1122-664-1000	1122-664-1000	1122-664-1000	1122-664-1000	1122-664-1000	1122-664-1000	1122-664-1000	1122-664-1000	1122-664-1000	
Inner Side Plate	0000-955-0801	0000-955-0801	0000-955-0801	0000-955-0801	0000-955-0801	0000-955-0801	0000-955-0801	0000-955-0801	0000-955-0801	0000-955-0801	0000-955-0801	0000-955-0801	0000-955-0801	0000-955-0801	
Bar Nut / Collar Nut (NFESH 06661)	1125-120-1626	1125-120-1612	1125-120-1612	1125-120-1612	1125-120-1612	1125-120-1612	1125-120-1612	1125-120-1612	1125-120-1612	1125-120-1612	1125-120-1612	1125-120-1612	1125-120-1612	1125-120-1612	
Air Filter - HD (NFESH 066756)	N/A	N/A	N/A	N/A	N/A	N/A	N/A	N/A	N/A	N/A	N/A	N/A	N/A	N/A	
Pre Filter - OEM	N/A	N/A	N/A	N/A	N/A	N/A	N/A	N/A	N/A	N/A	N/A	N/A	N/A	N/A	
MaxFlow Air Filter	N/A	N/A	N/A	N/A	N/A	N/A	N/A	N/A	N/A	N/A	N/A	N/A	N/A	N/A	
Filter Oil	N/A	N/A	N/A	N/A	N/A	N/A	N/A	N/A	N/A	N/A	N/A	N/A	N/A	N/A	
Filter Cleaner	N/A	N/A	N/A	N/A	N/A	N/A	N/A	N/A	N/A	N/A	N/A	N/A	N/A	N/A	
Bearing Grease - Tube	N/A	N/A	N/A	N/A	N/A	N/A	N/A	N/A	N/A	N/A	N/A	N/A	N/A	N/A	
Bar Oil - Gallon (NFESH 1880)	N/A	N/A	N/A	N/A	N/A	N/A	N/A	N/A	N/A	N/A	N/A	N/A	N/A	N/A	
Bar Oil - Quart (NFESH 1869)	N/A	N/A	N/A	N/A	N/A	N/A	N/A	N/A	N/A	N/A	N/A	N/A	N/A	N/A	
2 Cycle Oil - Quart (NFESH 0341)	N/A	N/A	N/A	N/A	N/A	N/A	N/A	N/A	N/A	N/A	N/A	N/A	N/A	N/A	
2 Cycle Oil: 5THL HD	N/A	N/A	N/A	N/A	N/A	N/A	N/A	N/A	N/A	N/A	N/A	N/A	N/A	N/A	
Non-Ethanol Fuel	N/A	N/A	N/A	N/A	N/A	N/A	N/A	N/A	N/A	N/A	N/A	N/A	N/A	N/A	
Felling Wedges	N/A	N/A	N/A	N/A	N/A	N/A	N/A	N/A	N/A	N/A	N/A	N/A	N/A	N/A	
6" Pocket - (NFESH 0515)	N/A	N/A	N/A	N/A	N/A	N/A	N/A	N/A	N/A	N/A	N/A	N/A	N/A	N/A	
8" Smooth - (NFESH 0884)	N/A	N/A	N/A	N/A	N/A	N/A	N/A	N/A	N/A	N/A	N/A	N/A	N/A	N/A	
8" Riffed - (NFESH 0516)	N/A	N/A	N/A	N/A	N/A	N/A	N/A	N/A	N/A	N/A	N/A	N/A	N/A	N/A	
12" - (NFESH 0772)	N/A	N/A	N/A	N/A	N/A	N/A	N/A	N/A	N/A	N/A	N/A	N/A	N/A	N/A	
Round File - 7/32" (NFESH 0345) or 13/64"	N/A	N/A	N/A	N/A	N/A	N/A	N/A	N/A	N/A	N/A	N/A	N/A	N/A	N/A	
Raker File - 8" Flat File	N/A	N/A	N/A	N/A	N/A	N/A	N/A	N/A	N/A	N/A	N/A	N/A	N/A	N/A	
Scrench - Combo Wrench (NFESH 0875)	N/A	N/A	N/A	N/A	N/A	N/A	N/A	N/A	N/A	N/A	N/A	N/A	N/A	N/A	
Chain 5THL Rapid-Super (RS) - 3/8" PITCH - .050" GUAGE	3623-005-0072 20" - 72 DR 25" - 84 DR (NFESH 006500) 28" - 91 DR 32" - 105 DR	3623-005-0072 3623-005-0084 3623-005-0091 N/A	3623-005-0072 3623-005-0084 3623-005-0091 N/A	3623-005-0072 3623-005-0084 3623-005-0091 N/A	3623-005-0072 3623-005-0084 3623-005-0091 N/A	3623-005-0072 3623-005-0084 3623-005-0091 N/A	3623-005-0072 3623-005-0084 3623-005-0091 N/A	3623-005-0072 3623-005-0084 3623-005-0091 N/A	3623-005-0072 3623-005-0084 3623-005-0091 N/A	3623-005-0072 3623-005-0084 3623-005-0091 N/A	3623-005-0072 3623-005-0084 3623-005-0091 N/A	3623-005-0072 3623-005-0084 3623-005-0091 N/A	3623-005-0072 3623-005-0084 3623-005-0091 N/A	3623-005-0072 3623-005-0084 3623-005-0091 N/A	3623-005-0072 3623-005-0084 3623-005-0091 N/A
Chain 5THL Rapid-Super-Full Skip (RSF) - 3/8" PITCH - .050" GUAGE	N/A 20" - 72 DR 25" - 84 DR 28" - 91 DR 32" - 105 DR	3676-005-0072 3676-005-0084 3676-005-0091 N/A	3676-005-0072 3676-005-0084 3676-005-0091 N/A	3676-005-0072 3676-005-0084 3676-005-0091 N/A	3676-005-0072 3676-005-0084 3676-005-0091 N/A	3676-005-0072 3676-005-0084 3676-005-0091 N/A	3676-005-0072 3676-005-0084 3676-005-0091 N/A	3676-005-0072 3676-005-0084 3676-005-0091 N/A	3676-005-0072 3676-005-0084 3676-005-0091 N/A	3676-005-0072 3676-005-0084 3676-005-0091 N/A	3676-005-0072 3676-005-0084 3676-005-0091 N/A	3676-005-0072 3676-005-0084 3676-005-0091 N/A	3676-005-0072 3676-005-0084 3676-005-0091 N/A	3676-005-0072 3676-005-0084 3676-005-0091 N/A	3676-005-0072 3676-005-0084 3676-005-0091 N/A
Guide Bars (5THL ROLLOMATIC - ES) - 3/8" PITCH - .050" GUAGE	N/A 20" 25" (NFESH 066564) 28" 32"	3003-000-8822 3003-000-8830 N/A N/A	3003-000-8822 3003-000-8830 N/A N/A	3003-000-8822 3003-000-8830 N/A N/A	3003-000-8822 3003-000-8830 N/A N/A	3003-000-8822 3003-000-8830 N/A N/A	3003-000-8822 3003-000-8830 N/A N/A	3003-000-8822 3003-000-8830 N/A N/A	3003-000-8822 3003-000-8830 N/A N/A	3003-000-8822 3003-000-8830 N/A N/A	3003-000-8822 3003-000-8830 N/A N/A	3003-000-8822 3003-000-8830 N/A N/A	3003-000-8822 3003-000-8830 N/A N/A	3003-000-8822 3003-000-8830 N/A N/A	3003-000-8822 3003-000-8830 N/A N/A

The items listed here are considered consumable. Replacement requests for these parts should be filled at the Incident Supply Unit or Local Cache and marked off. If the order is unable to be filled it should be sent to Ordering for SH assignment and sent to a Buying Team or purchasing support for the incident acquisition, or provided to the requesting resource for fill at the home unit.

Items highlighted in gray should be fillable at most cache locations.

REQUESTING PARTY: If the items you are ordering are not listed above, an OF-296 (Property Loss/Damage Form) MAY be required. Be descriptive on your orders and fill the order form out completely!

MEDICAL PLAN (ICS 206 WF)

Controlled Unclassified Information//Basic

Medical Incident Report

FOR A NON-EMERGENCY INCIDENT, WORK THROUGH CHAIN OF COMMAND TO REPORT AND TRANSPORT INJURED PERSONNEL AS NECESSARY.

FOR A MEDICAL EMERGENCY: IDENTIFY ON SCENE INCIDENT COMMANDER BY NAME AND POSITION AND ANNOUNCE "MEDICAL EMERGENCY" TO INITIATE RESPONSE FROM IMT COMMUNICATIONS/DISPATCH.

Use the following items to communicate situation to communications/dispatch.

1. CONTACT COMMUNICATIONS / DISPATCH (Verify correct frequency prior to starting report)
Ex: "Communications, Div. Alpha. Stand-by for Emergency Traffic."
2. INCIDENT STATUS: Provide incident summary (including number of patients) and command structure.
Ex: "Communications, I have a Red priority patient, unconscious, struck by a falling tree. Requesting air ambulance to Forest Road 1 at (Lat./Long.) This will be the Trout Meadow Medical, IC is TFLD Jones. EMT Smith is providing medical care."

Severity of Emergency / Transport Priority	<input type="checkbox"/> RED / PRIORITY 1 Life or limb threatening injury or illness. Evacuation need is IMMEDIATE Ex: Unconscious, difficulty breathing, bleeding severely, 2° - 3° burns more than 4 palm sizes, heat stroke, disoriented. <input type="checkbox"/> YELLOW / PRIORITY 2 Serious injury or illness. Evacuation may be DELAYED if necessary. Ex: Significant trauma, unable to walk, 2° - 3° burns not more than 1-3 palm sizes. <input type="checkbox"/> GREEN / PRIORITY 3 Minor Injury or illness. Non-Emergency transport Ex: Sprains, strains, minor heat-related illness.	
Nature of Injury or Illness & Mechanism of Injury		Brief Summary of Injury or Illness (Ex: Unconscious, Struck by Falling Tree)
Transport Request		Air Ambulance / Short Haul/Hoist Ground Ambulance / Other
Patient Location		Descriptive Location & Lat. / Long. (WGS84)
Incident Name		Geographic Name + "Medical" (Ex: Trout Meadow Medical)
On-Scene Incident Commander		Name of on-scene IC of Incident within an Incident (Ex: TFLD Jones)
Patient Care		Name of Care Provider (Ex: EMT Smith)

3. INITIAL PATIENT ASSESSMENT: Complete this section for each patient as applicable (start with the most severe patient)

Patient Assessment: See IRPG page 106

Treatment:

4. TRANSPORT PLAN:

Evacuation Location (if different): (Descriptive Location (drop point, intersection, etc.) or Lat. / Long.) Patient's ETA to Evacuation Location:

Helispot / Extraction Site Size and Hazards:

5. ADDITIONAL RESOURCES / EQUIPMENT NEEDS:

Example: Paramedic/EMT, Crews, Immobilization Devices, AED, Oxygen, Trauma Bag, IV/Fluid(s), Splints, Rope rescue, Wheeled litter, HAZMAT, Extrication

6. COMMUNICATIONS: Identify State Air/Ground EMS Frequencies and Hospital Contacts as applicable

Function	Channel Name/Number	Receive (RX)	Tone/NAC *	Transmit (TX)	Tone/NAC *
COMMAND					
AIR-TO-GRND					
TACTICAL					

7. CONTINGENCY: Considerations: If primary options fail, what actions can be implemented in conjunction with primary evacuation method? Be thinking ahead.

8. ADDITIONAL INFORMATION: Updates/Changes, etc.

REMEMBER: Confirm ETA's of resources ordered. Act according to your level of training. Be Alert. Keep Calm. Think Clearly. Act Decisively.