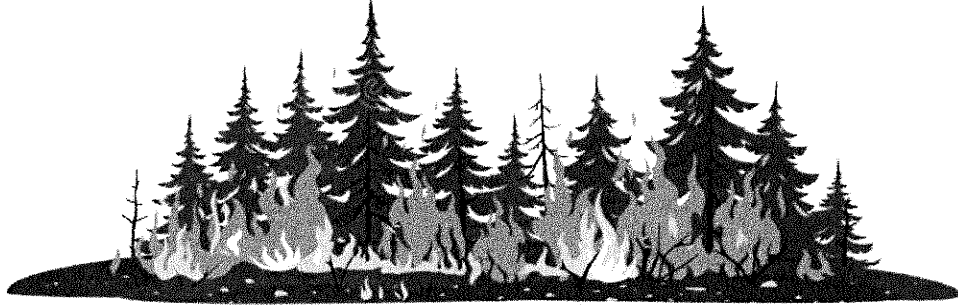


Incident Action Plan



Northern Rockies Incident Management Team #5

Rick Connell, Incident Commander

Craig Glazier, Deputy Incident Commander



Monday August 19, 2024

Day Operations 0700-2100

Night Operations 1900 – 0900

Middle Fork Complex P4R5Y9 (0402) ID-BOF-000936	Wapiti P4R4VV (0402) ID-BOF-000683	Bull Trout P4R4UR (0402) ID-BOF-000699
--------------------------------------------------------------	-------------------------------------------------	-----------------------------------------------------



Scan QR for Check-in, Demob, IAPs, Maps & Training

INCIDENT OBJECTIVES	1. Incident Names Middle Fork Complex, Wapiti and Bull Trout	2. Date Prepared August 18, 2024	3. Time 2100
----------------------------	----------------------------------------------------------------------------	--------------------------------------------	------------------------

4. Operational Period: **Aug. 19, 2024, 0700 – 2100 (Day Ops); Aug. 19, 1900 – Aug. 20, 0900 (Night Ops)**

Incident Objectives

- Execute Strategies to protect the public within the fire planning area by providing timely notification of road, trail and area closures and evacuations to avoid injury or the loss of life.
- Reduce risk to incident responders by assessing and mitigating identified hazards whenever possible, and by only accepting residual risk to responders when protecting highly valued resources and assets when the probability of success is high.
- Utilize confine and point/zone protection strategies in all operational planning and implementation, providing for the highest probability of success and an acceptable level of residual risk to responders to avoid the loss of these highly valued assets.

Incident Requirements

- Provide timely and accurate information to local communities, Boise and Sawtooth National Forests, partners, stakeholders and private landowners.
- Coordinate with Lead READ to protect all known cultural and historic sites from damage by suppression actions.
- Follow Idaho Roadless Area Rule guidance (2008), regarding appropriate suppression actions allowances/approval needs within roadless areas, in consultation with Boise NF lead Resource Advisor.
- Mitigate impacts to Threatened and Endangered species, including Bull trout and Whitebark pine, through coordination with Resource Advisors within the planning area.
- Prevent the spread of invasive aquatic species and noxious weeds by following the Boise National Forest resource mitigation guide, and through additional mitigations identified by Resource Advisors.
- Ensure coordination with Air Resource Advisor on smoke impacts to surrounding communities and incident responders.

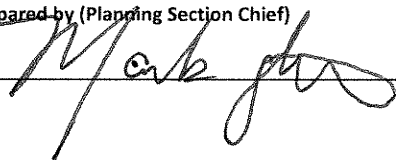
Course of Action

- Assess and implement confine and/or contain strategies, utilizing Management Action Points identified in the latest WFSS decisions for Middle Fork Complex (Bulldog and Nellie), Wapiti and Bull Trout, to trigger when and where to consider additional actions and identify fire management resources necessary for actions.
- Utilize strategic risk analysis to weigh exposure of actions to fire management resource personnel.

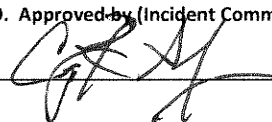
8. **Attachments (X if attached)**

<input checked="" type="checkbox"/>	ICS 203	<input checked="" type="checkbox"/>	Safety Message	<input checked="" type="checkbox"/>	Initial Attack Responsibilities
<input checked="" type="checkbox"/>	Incident Weather Forecast	<input checked="" type="checkbox"/>	ICS 206 Medical Plan	<input checked="" type="checkbox"/>	GB Chainsaw Parts Order Form
<input checked="" type="checkbox"/>	Fire Behavior Forecast	<input checked="" type="checkbox"/>	Resource Advisor Message	<input checked="" type="checkbox"/>	Division Supply Order Form
<input checked="" type="checkbox"/>	ICS 204 Division Assignment Lists	<input checked="" type="checkbox"/>	Demob Message & Tentative List	<input checked="" type="checkbox"/>	Incident and ICP Maps
<input checked="" type="checkbox"/>	ICS 220 Air Operations Summary	<input checked="" type="checkbox"/>	Training Message	<input checked="" type="checkbox"/>	ICS 214 Activity Log
<input checked="" type="checkbox"/>	ICS 205 Incident Radio Comm Plan		Human Resources Message	<input checked="" type="checkbox"/>	Medical Incident Report – 8 Line

9. Prepared by (Planning Section Chief)



9. Approved by (Incident Commander)



ORGANIZATIONAL ASSIGNMENT LIST (ICS 203)	1. Incident: Middle Fork Complex; Wapiti; Bull Trout	2. Date Prepared: 8/18/2024	
3. Time Prepared: 2000 hrs	4. Operational Period: August 19, 2024, 0700-2100 (DAY); August 19, 1900 - August 20, 0900 (NIGHT)		
5. Incident Commanders		9. Operations Section	
Incident Commander	Rick Connell	Strategic Ops	Paul Diaz
Deputy Incident Commander	Craig Glazier	Planning Ops	Ashley Sites
Safety Officer	Matt Nelson; Mike Cachero	Night Ops Chief	
Information Officer	Chris Ziegler	a. Branch I	
Liaison Officer	Bryan Donner	Branch Director	Kevin Smith; Ashton Ferruzzi (T)
6. Agency Representatives		Division D	Jessica Vincent; Sam Lewis (T)
Boise Forest Supervisor	Brant Petersen	Division O	unstaffed
Boise Forest Agency Administrator	Jason Kling; Chris Waverek (T)	Division P	Nick Peters; Troy Sanders (T)
Idaho Department of Lands	Ryan Woodland	Division T	Mike Tuffelmire; Dustin Roper (T)
6b. Cooperators			
Boise County Sheriff	Scott Turner	b. Branch II	
Garden Valley RFD	Paul Cleveland	Branch Director	Adam Carr
7. Planning Section		Division A	Rob Spence
Chief	Mark Glos	Division M	Joshua Dominguez; Javier Kirker (T)
Resource Unit	Patty Bates; Matt Reed (T)	Division V	Dan Helterline; Charlie Fisher (T)
Demob Unit	Sue Puddy		
Situation Unit	Jason Willoughby; Brett Gore	Division M NIGHT	Dave Maclay-Schulte
GISS	Jeff Sprovkin; Mitch Carey (T); Marjorie Jerez; Tony McCall (T)	c. Air Operations Branch	
Fire Behavior Branch I	Mike Pagoaga	AOBD	Jeff Polack
Fire Behavior Branch II	Mike Locke	ASGS	Steve Croy
Incident Meteorologist	Mike Seaman; Luke Rogers (T)	Helibase Mgr	
LTAN	Jon Rieck; Todd Erdody		
SOPL	Justin Pappani; Carolyn Warden (T)	10. Finance Section	
Lead READ	Matt Robinson	Chief	Biddy Simet; Wendy McCartney
Training Specialist	Brian Lamphiear (V)		
Human Resource Specialist	Sherry Neal (V)	Procurement	Tammy Peterson (T)
Air Resource Advisor	Amber Ortega		
ITSS	Michael Harper; Ryan Land (T); Victor Taus (T)	Time Unit Leader	Quoya Waters
8. Logistics Section		Personnel Time	Haleigh Stott; Rhea Warren; Becky Hopkins
Chief	Russell Riebe; Peter Pappas		
Logistics – Warm Springs	Jon Kautt	Equipment Time	Karen Sargeant; Dawn Lint
Supply Unit Leader	Meghan Carosella		
Ordering Manager	Darcy Wheeler (V)	Comp Unit	Quoya Waters
Medical Unit Leader	Rosemary Myers		
Communications	Mike Scherer; Bill Erhardt	Cost Unit	Terry Groesbeck (T)
Food Unit	Justin Trodick (T)		
Facility Unit Leader	Pat Nelson		
Ground Support	Kyler McCarrel	Prepared by Resource Unit Leader:	
Security Manager	John Velsvaag	<i>Patty Bates & Matt Reed</i>	



Fire Weather FORECAST

IMET Contact - (816) 589-0168



FORECAST NO: 9
 PREDICTION FOR: 0700 MON – 0700 TUE
 SHIFT DATE: MONDAY August 19, 2024

FORECAST ISSUED: 08/18/2024 at 1900
 SIGNED: *Mike Seaman*
 Incident Meteorologist (Mike Seaman)

WEATHER DISCUSSION. Elevated to near critical fire weather conditions can be expected again this afternoon. The morning inversion will lift early this afternoon allowing RH values to fall below 20% across the fire area by 1400. Winds will remain terrain driven across most sheltered areas, with southwest winds spreading across upper ridgelines and into aligned drainages during the afternoon and early evening hours. Little change in temperatures max/min temperatures can be expected from what was observed Sunday. With afternoon heating, a few cumulus buildups and an isolated shower or thunderstorm is possible over Branch II.

FORECAST FOR TODAY:		
	MIDDLE FORK COMPLEX	WAPITI AND BULLTROUT FIRES
SKY/WEATHER	Smoky in the morning then becoming mostly sunny with scattered afternoon cumulus.	Smoky in the morning then becoming partly cloudy. An isolated shower or thunderstorm possible after 1300.
MAX TEMPERATURE	Low Elevation (3500 ft): 92-95° F Mid Elevation (4500 ft): 87-90° F High Elevation (7000 ft): 76-79° F	Low Elevation (5000 ft): 85-88° F Mid Elevation (6500 ft): 75-78° F High Elevation (8000 ft): 67-70° F
MIN RELATIVE HUMIDTY	Low Elevation (3500 ft): 13-16% Mid Elevation (4500 ft): 14-17% High Elevation (7000 ft): 16-19%	Low Elevation (5000 ft): 14-17% Mid Elevation (6500 ft): 16-19% High Elevation (8000 ft): 20-23%
GENERAL 20 FT WINDS	Slope/drainage 3-8 mph. Southwest 5-10 mph gusting 12-18 mph after 1400 along exposed ridgelines & through aligned drainages.	Slope/drainage 3-8 mph. Southwest 6-10 mph gusting 15-20 mph after 1400 along exposed ridgelines and through aligned drainages.
INVERSION	Lifting by 1400.	Lifting by 1300.
PM MIXING HEIGHT	18,000 ft MSL	18,500 ft MSL
PM TRANSPORT WIND	Southwest around 20 mph	Southwest around 20 mph
PRECIP CHANCE (CWR)	10% (CWR: 2%)	15% (CWR: 5%)
LIGHTNING CHANCE (LAL)	5% (LAL: 1)	15%, mainly after 1300 (LAL: 1 until 1300, then 2)

FORECAST FOR TONIGHT:		
	MIDDLE FORK COMPLEX	WAPITI AND BULLTROUT FIRES
SKY/WEATHER	Partly cloudy in the evening then clearing.	Partly cloudy in the evening then clearing.
MIN TEMPERATURE	Low Elevation (3500 ft): 50-54° F Mid Elevation (4500 ft): 55-58° F High Elevation (7000 ft): 56-59° F	Low Elevation (5000 ft): 47-51° F Mid Elevation (6500 ft): 55-58° F High Elevation (8000 ft): 54-57° F
MAX RELATIVE HUMIDITY	Low Elevation (3500 ft): 55-65% High Elevation (4500 ft): 40-50% High Elevation (7000 ft): 30-40%	Low Elevation (5000 ft): 60-75% Mid Elevation (6500 ft): 30-40% High Elevation (8000 ft): 30-40%
GENERAL 20 FT WINDS	Southwest 4-9 mph until 2000 then downslope / down-drainage 3-8 mph.	Southwest 5-9 mph until 2000 then downslope / down-drainage 3-8 mph
INVERSION	Developing around 2000.	Developing below 6000 feet after 2000. Thermal belt above 6000 ft persisting into overnight hours.
PRECIP CHANCE (CWR)	5% (CWR: 1%)	10% (CWR: 2%)
LIGHTNING CHANCE (LAL)	2%. (LAL: 1)	2% (LAL:1)

Please text or send a picture of your weather observations to the IMET at [435-248-2053](tel:435-248-2053), or email to mike.seaman@noaa.gov. Thank you!

Access IRAWS Weather Observations via Radio (update every 15 minutes)

From the assigned channel, key up the radio & type in the desired station number. The RAWs will transmit the observation back to you.

Bulldog Fire: IRAWS 13 (3384 ft). Type 0013. Wapiti Fire: IRAWS 18 (6022 ft). Type 0018.
 Nellie Fire: IRAWS 20 (7394 ft): Type 0020. Wapiti Fire (DP10): IRAWS 19 (5088 ft). Type 0019

FIRE BEHAVIOR FORECAST	
FORECAST NUMBER: 10	TYPE OF FIRE: Wildland Fire
FIRE NAME: Middle Fork Cmplx, Wapiti, Bull Trout	OPERATIONAL PERIOD: Monday, 08/19/2024
DATE ISSUED: August 18, 2024	TIME ISSUED: 1900
UNIT: ID-BOF	SIGNED: <i>Mike Pagoaga</i> - FBAN
WEATHER	
See Fire Weather Forecast Temp: 88° RH: 18% 20' Winds: 8 mph, gust 18 ERC: 54 (90%)	<i>Local Weather Thresholds that shout WATCH OUT:</i> Temperatures above 80°, Relative Humidity below 20%, 20' winds above 20 mph, ERC > 61
FUELS	
<p>Timber littler, 1000-hr, and fine dead fuels are the main carrier of the fire. Some live woody shrubs are becoming available for consumption. Fire will spread through broken (scabby) fuels with enough wind especially along ridgetops. Ceanothus is a waist-high shrub with green waxy leaves. The foliage contains volatile oils that may contribute to fire.</p> <p style="text-align: center;">Live fuel Moistures: Ceanothus = 90% Red Stem = 142% Nine Bark = 123% Dead 1,000-Hr fuel moisture: 11%</p>	
FIRE BEHAVIOR	
<p><u>General Fire Behavior:</u> Persistent hot, dry, and breezy conditions will continue to facilitate large fire growth potential. Group torching, spotting with wind and terrain influenced runs after inversion. Burn period will extend to at least 2100 with the most active fire behavior occurring around 1900.</p> <p style="text-align: center;">Fine Dead Fuel Moisture: 3% unshaded, 5% shaded Max Probability of Ignition 90% Spotting distance 1/3 to 1/2 mile</p>	
<p><u>Specific Fire Behavior:</u> Middle Fork Complex: Bulldog: Continued wind driven spread along ridgelines above Rattlesnake Campground. Watch for increased torching when Rh drops below 25% this is occurring around 1400 each day. Backing and flanking fire behavior throughout the rest of the fire as it spreads to the east.</p> <p>Nellie: Group torching, up-hill runs, and spotting in direction of transport winds will continue. Expect the fire to reach Deadwood Reservoir today. Flanking fire with up-hill runs along drainages below Scott Mountain Lookout as the western flank spreads toward Lightning Creek to the northwest.</p> <p>Wapiti: Expect fire behavior to increase once again today. Continued torching, spotting and wind driven runs can be expected. Impacts to HWY 21 possible. Old fire scars will not slow fire spread as the fire spreads along ridgelines and wind aligned drainages.</p> <p>Bull Trout: Smoldering and creeping aided by dryness. No threat to containment expected.</p>	
Safety	
Conditions remain at or near critical values. Remain vigilant and don't be surprised.	

Please provide feedback, questions, and pictures to Mike Pagoaga – FBAN @ 413-800-6517, michael_pagoag@fws.gov

DIVISION ASSIGNMENT LIST ICS-204		1. BRANCH I	2. DIVISION/GROUP D
3. INCIDENT NAME Middle Fork Complex		4. OPERATIONAL PERIOD Date: August 19, 2024 Time: 0700 - 2100	

OPERATIONS PERSONNEL			
PLANNING OPS: Ashley Sites STRATEGIC OPS: Paul Diaz DIVISION SUPERVISOR: Jessica Vincent; Sam Lewis (T)		BRANCH DIRECTOR: Kevin Smith; Ashton Ferruzzi (T) AIR OPERATIONS BRANCH DIRECTOR: Jeff Polack	

RESOURCES ASSIGNED THIS PERIOD						
STRIKE TEAM/TASK FORCE/RESOURCE DESIGNATOR	Last Shift	LEADER	NUMBER PERSONS	DROP OFF POINT/TIME	PICK UP POINT/TIME	
TFLD Ryan Erickson	0-127	9/1	1	ICP / 0700	ICP / 2100	
CREW Garden Valley Helitack	Local	Daniel Hamilton	20	ICP / 0700	ICP / 2100	
CR2IA Boise Crew 3	C-7	8/19 William Streff	21	ICP / 0700	ICP / 2100	
CRW2 IMB Forestry	C-14	8/27 Gorgonio Ibarra	20	ICP / 0700	ICP / 2100	
ENG3 ID-BOF-361	Local	Andrew Patita	3	ICP / 0700	ICP / 2100	
ENG6 Cahoon Wildland Fire & Timber	E-92	8/25 Mike Snow	3	ICP / 0700	ICP / 2100	
ENG6 NV-HTF Engine 622	E-10	8/21 Skyler Benna-Couttenye	3	ICP / 0700	ICP / 2100	
ENG6 Westminster FD	E-110	8/23 Corbin Gray	3	ICP / 0700	ICP / 2100	
ENG6 Rocky Point	E-137	9/1 Anthony Longucco	3	ICP / 0700	ICP / 2100	
ENG3 Top Notch Forestry	E-130	8/25 Steven Magner	3	ICP / 0700	ICP / 2100	
WTT2 Ecosyn Services	E-27	8/26 Cache Phillips	2	ICP / 0700	ICP / 2100	
CHP2 Flying V Tree	E-114	8/23 Cody Vincent	3	ICP / 0700	ICP / 2100	
SOFR Matt Martin	O-98	8/29	1	ICP / 0700	ICP / 2100	

CONTROL OPERATIONS:

Task: Prep road for holding fire to the east. Use firing operations to keep the fire east of the river/road while moving north until an effective holding point is reached. Assess structures and structure protection needs in the vicinity of Silver Creek.

Purpose: Prevent fire growth to the north and west.

End State: Fire remains to the east of Middle Fork of the Payette River and Silver Creek values are protected.

SPECIAL INSTRUCTIONS:

If the fire moves to the north and threatens to breach MAP 4. Notify DIVS D, Branch I, OSC. Evaluate need to implement point protection measures at Silver Creek Plunge and associated infrastructure, Boiling Springs Cabin, Silver Creek Work Center, Silver Creek Lookout, and Eggers Cabin.

FUNCTION		FREQUENCY Rx	FREQUENCY Tx	CHAN	FUNCTION		FREQUENCY Rx	FREQUENCY Tx	CHAN.
TACTICAL	Tac 1	168.0500 (123.0)	168.0500 (123.0)		A/G PRIMARY	BR I	166.6000	166.6000	
COMMAND	CMD 10	169.5375 (123.0)	164.7125 (123.0)						
COMMAND									

PREPARED BY (RESOURCE UNIT LEADER) <i>/s/ Patty Bates & Matt Reed, RESL</i>	APPROVED BY (PLANNING SECTION CHIEF) <i>/s/ Mark Glos, PSCC</i>	DATE 8/18/24	TIME 2200
------------------------------------------------------------------------------------	--------------------------------------------------------------------	-----------------	--------------

DIVISION ASSIGNMENT LIST

ICS-204

1. BRANCH
I

2. DIVISION/GROUP
O

3. INCIDENT NAME
Middle Fork Complex

4. OPERATIONAL PERIOD
 Date: August 19, 2024
 Time: 0700 - 2100

OPERATIONS PERSONNEL

PLANNING OPS: Ashley Sites
 STRATEGIC OPS: Paul Diaz
 DIVISION SUPERVISOR:

BRANCH DIRECTOR: Kevin Smith; Ashton Ferruzzi (T)
 AIR OPERATIONS BRANCH DIRECTOR: Jeff Polack

RESOURCES ASSIGNED THIS PERIOD

STRIKE TEAM/TASK FORCE/RESOURCE DESIGNATOR	Last Shift	LEADER	NUMBER PERSONS	DROP OFF POINT/TIME	PICK UP POINT/TIME
<i>Unstaffed</i>					

CONTROL OPERATIONS:

SPECIAL INSTRUCTIONS:

FUNCTION		FREQUENCY Rx	FREQUENCY Tx	CHAN	FUNCTION		FREQUENCY Rx	FREQUENCY Y Tx	CHAN.
TACTICAL	TAC 3	168.6000 (123.0)	168.6000 (123.0)		A/G PRIMARY	Br I	166.6000	166.6000	
COMMAND	CMD 10	169.5375 (123.0)	164.7125 (123.0)						
COMMAND									

PREPARED BY (RESOURCE UNIT LEADER) <i>/s/ Patty Bates & Matt Reed, RESL</i>	APPROVED BY (PLANNING SECTION CHIEF) <i>/s/ Mark Glos, PSCC</i>	DATE <i>8/18/24</i>	TIME <i>2200</i>
------------------------------------------------------------------------------------	--------------------------------------------------------------------	------------------------	---------------------

DIVISION ASSIGNMENT LIST ICS-204				1. BRANCH I		2. DIVISION/GROUP T			
3. INCIDENT NAME Middle Fork Complex				4. OPERATIONAL PERIOD Date: August 19, 2024 Time: 0700 - 2100					
OPERATIONS PERSONNEL									
PLANNING OPS: Ashley Sites STRATEGIC OPS: Paul Diaz DIVISION SUPERVISOR: Mike Tuffelmire; Dustin Roper (T)				BRANCH DIRECTOR: Kevin Smith; Ashton Ferruzzi (T) AIR OPERATIONS BRANCH DIRECTOR: Jeff Polack					
RESOURCES ASSIGNED THIS PERIOD									
STRIKE TEAM/TASK FORCE/RESOURCE DESIGNATOR		Last Shift	LEADER	NUMBER PERSONS	DROP OFF POINT/TIME	PICK UP POINT/TIME			
* TFLD Andrew Nielsen (T)	C-7.1	8/19		1	ICP / 0700	ICP/2100			
CR2IA PRMA #3	C-17	8/31	Jorge Davila	20	ICP / 0700	ICP/2100			
* CRW2 G & C Forestry	C-16	8/21	Luis Vera	20	ICP / 0700	ICP/2100			
WTT2 CA-CNF Water Tender 245	E-20	8/25	Joshua Craddock	2	ICP / 0700	ICP/2100			
TFLD Cannon Mix	O-8	8/24		1	ICP / 0700	ICP/2100			
CR2IA Anthracite	C-5	8/21	Troy Stimaker	20	ICP / 0700	ICP/2100			
* ENG3 UT-UWF Engine 321	E-90	8/21	Collin Bertoch	7	ICP / 0700	ICP/2100			
CHP1 Flying V Tree	E-9	8/19	Ayrik Fisher	3	ICP / 0700	ICP/2100			
SOFR Doug Havlina	O-6	8/24		1	ICP / 0700	ICP/2100			
EMPF Ethan Biederman	O-38	8/24		1	ICP / 0700	ICP/2100			
MESU Med Mod #1	E-46	8/31	Kelly Williams	2	ICP / 0700	ICP/2100			
REAF Kyle Paffett (T)	O-89	8/23		1	ICP / 0700	ICP/2100			
REAF Matt Robinson	O-67	8/19		1	ICP / 0700	ICP/2100			
REAF Tony Papa	O-60	8/25		1	ICP / 0700	ICP/2100			
CONTROL OPERATIONS:									
TASK: Continue to improve/hold direct and indirect lines from the Middle Fork Payette River to the division break on the Lightning Ridge trail.									
PURPOSE: Limit fire growth to the south and west.									
END STATE: Indirect contingency lines are completed. Structures along the Middle Fork Payette River and the community of Crouch are protected.									
* Identified for IA									
SPECIAL INSTRUCTIONS:									
<i>If the fire moves to the south into the Lightning Creek drainage with the potential to breach containment lines, Notify DIVS T, Branch I, OSC, LOFR. Notifications to Law Enforcement and Boise County EMS will be made. Evaluate the need for point protection of values within the subdivisions along Middle Fork Payette River.</i>									
FUNCTION		FREQUENCY Rx	FREQUENCY Tx	CHAN	FUNCTION		FREQUENCY Rx	FREQUENCY Tx	CHAN.
TACTICAL	Tac 4	166.7250 (123.0)	166.7250 (123.0)		A/G PRIMARY	Br 1	166.6000	166.6000	
COMMAND	CMD 10	169.5375 (123.0)	164.7125 (123.0)						
COMMAND									
PREPARED BY (RESOURCE UNIT LEADER)				APPROVED BY (PLANNING SECTION CHIEF)		DATE	TIME		
/s/ Patty Bates & Matt Reed, RESL				/s/ Mark Glos, PSCC		8/18/24	2200		

DIVISION ASSIGNMENT LIST ICS-204		1. BRANCH II	2. DIVISION/GROUP M
3. INCIDENT NAME Wapiti		4. OPERATIONAL PERIOD Date: August 19, 2024 Time: 0700 - 2100	

OPERATIONS PERSONNEL

PLANNING OPS: Ashley Sites STRATEGIC OPS: Paul Diaz DIVISION SUPERVISOR: Joshua Dominguez Javier Kirker (T)	BRANCH DIRECTOR: Adam Carr AIR OPERATIONS BRANCH DIRECTOR: Jeff Polack
-------------------------------------------------------------------------------------------------------------------------------------------	-----------------------------------------------------------------------------------------

RESOURCES ASSIGNED THIS PERIOD

STRIKE TEAM/TASK FORCE/RESOURCE DESIGNATOR	Last Shift	LEADER	NUMBER PERSONS	DROP OFF POINT/TIME	PICK UP POINT/TIME	
CRW1 Snake River	C-11	8/24	Ken Bochniak	20	Warm Springs 0700	Warm Springs 2100
ENG6 Big State Wildfire	E-91	8/25	James Maillard	3	Warm Springs 0700	Warm Springs 2100
ENG6 Fireworks	E-125	8/24	Jake Morton	3	Warm Springs 0700	Warm Springs 0700
ENG6 Denver FD Engine 602	E-83	8/19	Jay McCann	3	Warm Springs 0700	Warm Springs 2100
ENG6 Outback	E-124	8/25	Shane Southwick	3	Warm Springs 0700	Warm Springs 2100
ENG3 Los Pinos 88	E-53	8/22	David Doucleff	5	Warm Springs 0700	Warm Springs 0700
ENG3 National Wildland Fire	E-80	8/23		3	Warm Springs 0700	Warm Springs 0700
WTT2 F4 Fire	E-21	8/25	Craig Fisher	2	Warm Springs 0700	Warm Springs 2100
WTS1 R B & H Enterprises	E-81	8/26	Rob Connell	1	Warm Springs 0700	Warm Springs 0700
HEQB Sean Loscudo	O-103	8/30		1	Warm Springs 0700	Warm Springs 0700
DOZ2 Sandhollow Fire	E-89	8/29	Toby Hawkins	2	Warm Springs 0700	Warm Springs 0700
SKG2 Bull Creek Forestry	E-87	8/25	David Bertsch	2	Warm Springs 0700	Warm Springs 0700

CONTROL OPERATIONS:

TASK: Provide and improve protections for structures and improvements in Wapiti Creek, Sawtooth Lodge, and infrastructure in the Grandjean area. Conduct firing operations based on fire behavior. Patrol / monitor fire perimeter. Ensure fire edge is secured.

PURPOSE: Secure fire line through progressive firing operations to bring the fire to a more favorable fireline location.

END STATE: Ensure that existing structures and infrastructure do not sustain further damage. Provide for safe ingress and egress.

SPECIAL INSTRUCTIONS:
Evaluate fire behavior/spread and current or expected impacts to HWY 21. Notify DIVS M, Branch II, and Operations if fire and/or smoke cause impacts to HWY 21 access. Consider adjusting tactics to protect values to the north.

FUNCTION		FREQUENCY Rx	FREQUENCY Tx	CHAN	FUNCTION		FREQUENCY Rx	FREQUENCY Tx	CHAN.
TACTICAL	TAC 3	168.6000 (103.5)	168.6000 (103.5)		A/G PRIMARY	Br II	168.3750	168.3750	
COMMAND	CMD 8	171.8500 (103.5)	162.8000 (103.5)						
COMMAND									

PREPARED BY (RESOURCE UNIT LEADER) <i>/s/ Patty Bates & Matt Reed, RESL</i>	APPROVED BY (PLANNING SECTION CHIEF) <i>/s/ Mark Glos, PSCC</i>	DATE 8/18/24	TIME 2200
------------------------------------------------------------------------------------	--------------------------------------------------------------------	------------------------	---------------------

DIVISION ASSIGNMENT LIST ICS-204				1. BRANCH II		2. DIVISION/GROUP V			
3. INCIDENT NAME Wapiti				4. OPERATIONAL PERIOD Date: August 19 2024 Time: 0700 - 2100					
OPERATIONS PERSONNEL									
PLANNING OPS: Ashley Sites STRATEGIC OPS: Paul Diaz DIVISION SUPERVISOR: Dan Hetterline; Charlie Fischer (T)				BRANCH DIRECTOR: Adam Carr AIR OPERATIONS BRANCH DIRECTOR: Jeff Polack					
RESOURCES ASSIGNED THIS PERIOD									
STRIKE TEAM/TASK FORCE/RESOURCE DESIGNATOR			Last Shift	LEADER	NUMBER PERSONS	DROP OFF POINT/TIME	PICK UP POINT/TIME		
CR2IA PatRick			C-9	8/29	Levy Miller	20	Warm Springs 0700	Warm Springs 2100	
ENG3 Treasure Valley			E-56	9/1	John Hovey	3	Warm Springs 0700	Warm Springs 2100	
ENG5 Flat Rock			E-93	8/25	Cody Blair	3	Warm Springs 0700	Warm Springs 2100	
ENG5 Three Rivers			E-41	8/25	Murray Hannaweeka	3	Warm Springs 0700	Warm Springs 2100	
ENG6 ESB Management			E-39	8/26	Matt Nickle	3	Warm Springs 0700	Warm Springs 2100	
ENG6 Northern Utah Fire			E-111	8/25	Anthony Gordon	3	Warm Springs 0700	Warm Springs 2100	
WTT2 Treasure Valley			E-116	8/26	John Van Auken	2	Warm Springs 0700	Warm Springs 2100	
WTS2 Dust Buster			E-12	8/28	Paul Kurzeborn	1	Warm Springs 0700	Warm Springs 2100	
WTS2 Allens			E-42	8/28	Dave Shaw	1	Warm Springs 0700	Warm Springs 2100	
TFLD Nick Clark (T)			O-33.32	8/22		1	Warm Springs 0700	Warm Springs 2100	
TFLD Sean Weston			O-29	8/21		1	Warm Springs 0700	Warm Springs 2100	
TFLD Dustin Mireles (T)			O-85	8/28		1	Warm Springs 0700	Warm Springs 2100	
SOFR Fred Johnson			O-99	8/30					
EMPF Jeff Ullrey			O-19	8/24		1	Warm Springs 0700	Warm Springs 2100	
AMB2 Fireline Ambo #1			E-5	8/30	Andy Belcher	2	Warm Springs 0700	Warm Springs 2100	
REAF Garry Brown			O-22	8/23		1	Warm Springs 0700	Warm Springs 2100	
REAF Ryan Santo			O-23	8/23		1	Warm Springs 0700	Warm Springs 2100	
ARCH Joe Bergstrom			O-71	8/21		1	Warm Springs 0700	Warm Springs 2100	
REAF Lucas Roy (T)			O-72	8/19		1	Warm Springs 0700	Warm Springs 2100	
CONTROL OPERATIONS: Task: Provide and improve protections for structures and improvements in Bear Creek, Camp Creek and infrastructure in the Grandjean area. Conduct firing operations based on fire behavior. Patrol / monitor fire perimeter. Ensure fire edge is secured. Purpose: Secure fire line through progressive firing operations to bring the fire to a more favorable fireline location. End State: Existing structures and infrastructure do not sustain further damage. Safe ingress and egress is ensured.									
SPECIAL INSTRUCTIONS: <i>Evaluate fire behavior/spread and current or expected impacts to HWY 21. Notify DIVS V, Branch II, and Operations if fire and/or smoke cause impacts to HWY 21 access. Consider adjusting tactics to protect values to the north.</i> <i>If the fire moves to the west across Wolf Creek, breaches MAP 3, and becomes established, notify DIVS V, Branch II, and Operations. Evaluate fire behavior and the need to protect values in Hanging Valley, Bonneville Campground, and Warm Springs Cabin. Evaluate current or expected impacts to HWY 21.</i>									
FUNCTION		FREQUENCY Rx	FREQUENCY Tx	CHAN	FUNCTION		FREQUENCY Rx	FREQUENCY Tx	CHAN.
TACTICAL	TAC 2	168.2000 (103.5)	168.2000 (103.5)		A/G PRIMARY	Br II	168.3750	168.3750	
COMMAND	CMD 8	171.8500 (103.5)	162.8000 (103.5)						
COMMAND									
PREPARED BY (RESOURCE UNIT LEADER)				APPROVED BY (PLANNING SECTION CHIEF)		DATE	TIME		
/s/ Patty Bates & Matt Reed, RESL				/s/ Mark Glos, PSCC		8/18/24	2200		

DIVISION ASSIGNMENT LIST ICS-204		1. BRANCH II	2. DIVISION/GROUP M Night
3. INCIDENT NAME Wapiti		4. OPERATIONAL PERIOD Date/Time: August 19, 2024, 1900 – August 20, 0700	

OPERATIONS PERSONNEL

PLANNING OPS: Ashley Sites
STRATEGIC OPS: Paul Diaz
DIVISION SUPERVISOR: Dave Macclay-Schulte

NIGHT OPERATIONS:
BRANCH DIRECTOR: Adam Carr
AIR OPERATIONS BRANCH DIRECTOR: Jeff Polack

RESOURCES ASSIGNED THIS PERIOD

STRIKE TEAM/TASK FORCE/RESOURCE DESIGNATOR	Last Shift	LEADER	NUMBER PERSONS	DROP OFF POINT/TIME	PICK UP POINT/TIME	
TFLD Dan Dosch	E-53.2	8/22	1	Warm Springs 1900	Warm Springs 0700	
TFLD Rogue Swenson	O-10.18	8/26	1	Warm Springs 1900	Warm Springs 0700	
TFLD Hunter Flinders (T)	E-53.3	8/22	1	Warm Springs 1900	Warm Springs 0700	
CRW1 Lolo IHC	C-10	8/26	Shawn Faiella	22	Warm Springs 1900	Warm Springs 0700
CR2IA Zuni 2	C-18	9/1	Ricky Booqua	19	Warm Springs 1900	Warm Springs 0700
ENG6 Axxess Fire	E-11	8/20	Shane Sexton	3	Warm Springs 1900	Warm Springs 0700
ENG3 NV-WID Engine 2309	E-29	8/19	Scott Pace	3	Warm Springs 1900	Warm Springs 0700
ENG6 ID-IPF 621	E-48	8/28	Will Dalby	5	Warm Springs 1900	Warm Springs 0700
ENG3 AAA	E-38	8/26	Vanessa Aldrich	3	Warm Springs 1900	Warm Springs 0700
ENG3 Colorado River Fire	E-54	8/24	Zach Niccoli	3	Warm Springs 1900	Warm Springs 0700
SOFR Jonathan White	O-33.8	8/22		1	Warm Springs 1900	Warm Springs 0700
EMPF Anthony Amoroso	O-27	8/22		1	Warm Springs 1900	Warm Springs 0700
EMTF Emily Nemore	O-17	8/24		1	Warm Springs 1900	Warm Springs 0700

CONTROL OPERATIONS:

TASK: Provide and improve protections for structures and improvements in Wapiti Creek, Sawtooth Lodge, and infrastructure in the Grandjean area. Conduct firing operations based on fire behavior. Patrol / monitor fire perimeter. Ensure fire edge is secured.

PURPOSE: Secure fire line through progressive firing operations to bring the fire to a more favorable fireline location.

END STATE: Ensure that existing structures and infrastructure do not sustain further damage. Provide for safe ingress and egress.

SPECIAL INSTRUCTIONS:

Evaluate fire behavior/spread and current or expected impacts to HWY 21. Notify DIVS M, Branch II, and Operations if fire and/or smoke cause impacts to HWY 21 access. Consider adjusting tactics to protect values to the north.

FUNCTION	FREQUENCY Rx	FREQUENCY Tx	CHAN	FUNCTION	FREQUENCY Rx	FREQUENCY Tx	CHAN.
TACTICAL	TAC 3	168.6000 (103.5)	168.6000 (103.5)	A/G PRIMARY	Br II	168.3750	168.3750
COMMAND	CMD 8	171.8500 (103.5)	162.8000 (103.5)				
COMMAND							

PREPARED BY (RESOURCE UNIT LEADER) <i>/s/ Patty Bates & Matt Reed, RESL</i>	APPROVED BY (PLANNING SECTION CHIEF) <i>/s/ Mark Glos, PSCC</i>	DATE 8/18/24	TIME 2200
------------------------------------------------------------------------------------	--------------------------------------------------------------------	------------------------	---------------------

INCIDENT RADIO COMMUNICATIONS PLAN I-205				1. INCIDENT NAME		2. DATE/TIME PREPARED		3. OPERATIONAL PERIOD DATE/TIME			
Middle Fork Complex BRANCH ONE				8/18/24 1500		8/19/24 0700 - 2100					
4. BASIC RADIO CHANNEL UTILIZATION											
Ch #	Function	Channel Name	Assignment	RX Freq	N/W	RX Tone/NAC	TX Freq	N/W	TX Tone/NAC	Mode Analog (A) Digital (D) Mixed (M)	Remarks
1	TAC	TAC 1	DIV D	168.0500	N	123.0	168.0500	N	123.0	A	BULLDOG
2	TAC	TAC 2	DIV P	168.2000	N	123.0	168.2000	N	123.0	A	NELLIE
3	TAC	TAC 3	DIV O	168.6000	N	123.0	168.6000	N	123.0	A	BULLDOG
4	TAC	TAC 4	DIV T	166.7250	N	123.0	166.7250	N	123.0	A	BULLDOG
5	TAC	TAC 5	UN	168.7750	N	123.0	168.7750	N	123.0	A	UNASSIGNED
6	WEATHER	RAWS	BRANCH 1	163.3500	N	NONE	163.3500	N	NONE	A	REMOTE AUTOMATED WEATHER STATION
7	COMMAND	CMD 7	BRANCH 2	168.0125	N	103.5	164.5750	N	103.5	A	S OF COPPER (BULL TROUT)
8	COMMAND	CMD 8	BRANCH 2	171.8500	N	103.5	162.8000	N	103.5	A	ZUMWALT MTN (WAPITI)
9	COMMAND	CMD 9	BRANCH 1	170.4500	N	123.0	168.1000	N	123.0	A	JACKSON LOOKOUT
10	COMMAND	CMD 10	BRANCH 1	169.5375	N	123.0	164.7125	N	123.0	A	SCOTT LOOKOUT
11	COMMAND	BOF NORTH REPEAT		171.4500	N	NONE	164.1625	N	156.7	A	BOF N REPEAT PACKER JOHN (TONE 7)
12	A/G	A/G PRI		166.6000	N	NONE	166.6000	N	NONE	A	BRANCH 1 BULLDOG A/G PRIMARY
13	A/G	A/G SEC		169.2000	N	NONE	169.2000	N	NONE	A	BRANCH 1 BULLDOG A/G SECONDARY
14	A/G	A/G TER		170.0250	N	NONE	170.0250	N	NONE	A	BRANCH 1 NELLIE A/G TERTIARY
15	MEDEVAC A/G	ST COMM EMS		155.2800	N	NONE	155.2800	N	156.7	A	STATE COMM (EMS)
16	AIRGUARD	AIR GRD		168.6250	N	NONE	168.6250	N	110.9	A	EMERGENCY USE ONLY
5. Special Instructions: TO UTILIZE CHANNEL 6 RAWS PRESS THE PUSH TO TALK BUTTON, ON THE KEY PAD ENTER 0013 FOR BULLDOG OR 0020 FOR NELLIE AREAS WHILE TRANSMITTING. RELEASE PUSH TO TALK AND RAWS STATION WILL REPLY WITH LOCAL WEATHER OBSERVATION											
6. I-205 Prepared By: Communications Unit Leader				Name: MIKE SCHERER			Signature: PAUL SCHERER			<small>Digitally signed by PAUL SCHERER Date: 2024.08.18 16:23:47 -0700</small>	

INCIDENT RADIO COMMUNICATIONS PLAN I-205			1. INCIDENT NAME		2. DATE/TIME PREPARED		3. OPERATIONAL PERIOD DATE/TIME				
			BRANCH TWO Wapiti/Bull Trout		8/18/24 1500		8/19/24 0700 - 2100				
4. BASIC RADIO CHANNEL UTILIZATION											
Ch #	Function	Channel Name	Assignment	RX Freq	N/W	RX Tone/NAC	TX Freq	N/W	TX Tone/NAC	Mode Analog (A) Digital (D) Mixed (M)	Remarks
1	TAC	TAC 1	DIV A	168.0500	N	103.5	168.0500	N	103.5	A	BULL TROUT
2	TAC	TAC 2	DIV V	168.2000	N	103.5	168.2000	N	103.5	A	WAPITI
3	TAC	TAC 3	DIV M	168.6000	N	103.5	168.6000	N	103.5	A	WAPITI
4	TAC	TAC 4	DIV NIGHT M	166.7250	N	103.5	166.7250	N	103.5	A	WAPITI
5	TAC	TAC 5	DIV NIGHT V	168.7750	N	103.5	168.7750	N	103.5	A	WAPITI
6	TAC	TAC 6	UN	168.2500	N	103.5	168.2500	N	103.5	A	UNASSIGNED
7	COMMAND	CMD 7	BRANCH 2	168.0125	N	103.5	164.5750	N	103.5	A	S OF COPPER (BULL TROUT)
8	COMMAND	CMD 8	BRANCH 2	171.8500	N	103.5	162.8000	N	103.5	A	ZUMWALT MTN (WAPITI)
9	COMMAND	CMD 9	BRANCH 1	170.4500	N	123.0	168.1000	N	123.0	A	JACKSON LOOKOUT
10	COMMAND	CMD 10	BRANCH 1	169.5375	N	123.0	164.7125	N	123.0	A	SCOTT LOOKOUT
11	WEATHER	RAWS	BRANCH II	163.3500	N	NONE	163.3500	N	NONE	A	REMOTE AUTOMATED WEATHER STATION
12	A/G	A/G PRI		168.3750	N	NONE	168.3750	N	NONE	A	BRANCH 2/WAPITI A/G PRIMARY
13	A/G	A/G SEC		172.4500	N	NONE	172.4500	N	NONE	A	BRANCH 2 WAPITI A/G SECONDARY
14	A/G	A/G TER		167.0750	N	NONE	167.0750	N	NONE	A	BRANCH 2 BULL TROUT A/G TERTIARY
15	MEDEVAC A/G	ST COMM EMS		155.2800	N	NONE	155.2800	N	156.7	A	STATE COMM (EMS)
16	AIRGUARD	AIRGUARD		168.6250	N		168.6250	N	110.9	A	EMERGENCY USE ONLY
5. Special Instructions: TO UTILIZE CHANNEL 6 RAWS PRESS THE PUSH TO TALK BUTTON, ON THE KEY PAD ENTER 0018 OR 0019 WHILE TRANSMITTING. RELEASE PUSH TO TALK AND RAWS STATION WILL REPLY WITH LOCAL WEATHER OBSERVATION											
6. I-205 Prepared By: Communications Unit Leader				Name: MIKE SCHERER				Signature: PAUL SCHERER			

Printed by PAUL SCHERER
Date: 2024.08.18 16:33:07 PDT

ID-BOF Middle Fork Complex, Wapiti and Bull Trout Fires Initial Attack Responsibility and Procedures

The following applies to all IA responses:

- Relay the initial coordinates and size up information (if applicable) to the Incident's Communications Unit.
- The Communications Unit will take the coordinates to the Situation Unit to plot and determine if the new start is in/out of the IA responsibility area.
- The Communications Unit will notify Planning Operations of the potential new IA.
- If requested, the Planning Operations will update the jurisdictional Duty Officer.
- Incident Communications Unit will notify the jurisdictional dispatch office of the new start, to provide an initial size-up and inform the jurisdictional dispatch of the resources responding.
- In all cases, IA will be documented using the appropriate Incident Organizer and be given to the local agency representative upon arrival on scene, in camp or sent to the respective jurisdictional dispatch center.
- Air resources obtaining size up information must communicate that on the Air to Ground frequency due to other incidents in the area and potential of crossing over. Ground resources will deliver size up information to the Communications Unit on Command frequency.

Fires within the IA Responsibility Area:

- All communications will be handled through the Incident's Communications Unit.
- The initial size up will be relayed to Line Operations, who will send appropriate identified resources.
- All requests for additional resources must be approved by Line Operations.
- Northern Rockies CIM Team 5 will manage the fire until it is suppressed completely, turned over to local resources, or the agency administrator makes a different decision regarding its management.
- If the jurisdictional dispatch office identifies a potential new start within the delegated incident IA response area, dispatch will notify the Incident's Communications Unit and all above procedures will be implemented.

Fires outside the IA Responsibility Area:

- The respective jurisdictional dispatch office will dispatch resources to the fire per dispatch procedures unless otherwise requested by the Duty Officer for the jurisdictional Agency.
- The jurisdictional duty officer may request team resources (aviation or ground) through the Incident's Communications Unit as approved by Line Operations.
- If incident's resources are utilized, and arrive on-scene first, they will provide a size up to the incident Communications Unit. The Communications Unit will, in turn, provide intel/information to the jurisdictional dispatch center.
- The jurisdictional dispatch office will provide the Air-to-Air frequency to all dispatched aviation resources to communicate with Air Attack.
- Jurisdictional responding ground resources will be given the frequencies to the appropriate fire incident (Middle Fork Complex, Wapiti and/or Bull Trout), to provide positive communications with all resources responding.
- Aviation resources may go direct to the jurisdictional dispatch office for their notification and size up but must also notify the Incident's Communications Unit, in coordination with the incident Air Attack.

HEALTH AND SAFETY MESSAGE

SAFETY starts with *YOU*



We are ALL accountable for SAFE behaviors

INCIDENT: Middle Fork, Bull Trout, Wapiti	DATE: 8/19/2024	Oper. Period: Dayshift/Night
-------------------------------------------	-----------------	------------------------------

Major Hazards and Risks:

- Hotter temperatures and unpredictable weather changes.
- Smoke inversions affecting use of aircraft
- Limited escape routes and safety zones
- Long transportation times to medical facilities

Fire Order of the Day – Determine safety zones and escape routes

Narrative: Fires can often grow faster than we can gather intelligence on it. Make sure LCES is in place prior to engagement. Stay in communication with all the surrounding resources and constantly review the contingency plans. Abide by the 10 fire orders and know when any of the 18 watchout situations are present. Your safety is our number one priority always!

Watchout Situation of the Day



6. INSTRUCTIONS AND ASSIGNMENTS NOT CLEAR

LCES

LOOKOUT, COMMUNICATION,
ESCAPE ROUTE, SAFETY ZONE

Pronunciation:

Luk aut, Ca mun i que shi on,
Es quep Ra out, Saef ti Zon

MCEZ

MIRADOR, COMUNICACION,
RUTA DE ESCAPE, ZONA DE SEGURIDAD

Pronunciacion:

Mee rah door, Co moon ee kah see eon,
Roo tah de Es cah peh, Zoe nah de Seh gur ee dahd

MEDICAL PLAN (ICS 206 WF)

Controlled Unclassified Information//Basic

1. Incident/Project Name			2. Operational Period				
Middle Fork Complex, Wapiti, Bull Trout			08/19/24 Day/Night shift				
3. Ambulance Services							
Name	Complete Address	Phone & EMS Frequency	Advanced Life Support (ALS) Yes No				
Lowman Emergency Services	8000 ID 21 Lowman ID 83637	911	<input type="checkbox"/>	<input checked="" type="checkbox"/>			
Garden Valley Fire	373 S Middle Fork Rd, Garden Valley ID 83622	911	<input checked="" type="checkbox"/>	<input type="checkbox"/>			
4. Air Ambulance Services							
Name	Contact	Type of Aircraft & Capability					
35HX (Teton) at Cascade Helibase 1469 Main St, Cascade, ID 83611	Boise Dispatch 208-384-3398	AS350B3e; Short-haul, BLS Medevac, Hospital Transport, Day Only					
3SH (Krassel) at McCall Helibase 605 S. Mission St, McCall, Idaho 83638	Payette Dispatch 208-425-8613	AS350B3e; Short-haul, Medevac, Hospital Transport, Day Only					
Life Flight Inc.	(800) 232-0911	Bell 407, ALS, Night Capable					
Air St. Luke's	(208) 381-8900	Bell 429, ALS, Night Capable, Fixed Wing					
5. Hospitals							
Name & Address	GPS Datum – WGS 84 Degrees Decimal Minutes DD° MM.MM' N – Lat DD° MM.MM' W – Long	Travel Time Air Ground		Phone	Helipad Yes No		Level of Care
Garden Valley Family Med 856 Banks Lowman Road Garden Valley, ID 83622	Lat: 44° 06.06' N	15 MIN	30 MIN	Direct Line 208-462-3533	<input checked="" type="checkbox"/>	<input type="checkbox"/>	Family Medical Clinic
	Long: 115° 58.07' W	N/A					
	VHF: F2, Boise Dispatch						
St. Alphonsus Hospital 1055 N Curtis Rd Boise, ID 83706	Lat: 43° 36.79' N	45 MIN	2 HRS	ER Desk 208-367-3223, EMS report 208-367-6479	<input checked="" type="checkbox"/>	<input type="checkbox"/>	Level II Trauma
	Long: 116° 15.29' W	FAA# ID91					
	VHF: F2, Boise Dispatch						
St. Luke's Medical Center 190 E. Bannock St. Boise, ID 83712	Lat: 43° 36.77' N	45 MIN	2 HRS	208-381-2222	<input checked="" type="checkbox"/>	<input type="checkbox"/>	Critical Care Hospital
	Long: 116° 11.51' W	FAA# ID49					
	VHF: F2, Boise Dispatch						
EIRMC Burn Center 3100 Channing Way Idaho Falls, ID 83404	Lat: 43° 29.4' N	2 HRS	5 HRS	Direct Line 208-529-7986	<input checked="" type="checkbox"/>	<input type="checkbox"/>	Level III/ Burn Center
	Long: 112° 01.8' W	FAA# ID18					
	VHF:						
University of Utah 50 Medical Dr N Salt Lake City, UT 84132	Lat: 40° 46.32 N	3 HRS	6 HRS	(801) 581-2241	<input checked="" type="checkbox"/>	<input type="checkbox"/>	Level I / Burn Center
	Long: 111° 50.30 W	FAA# UT21					
	VHF:						
Division Branch Group		Area Location Capability					
Middle Fork Complex ICP 85 Severance Rd, Garden Valley, ID 83622		EMS Responders & Capability:		Rosemary Myers, AEMT/MEDL BLS, Steven Kendley, EMTF/MEDL(t), Emily Nemore, EMTF/MEDL(t)			
		Equipment Available on Scene:		IV, AED, O2			
7. Name & Location		Remote Camp Location: Warm Springs Air Strip Rd					
FOB Warm Springs Air Strip Warm Springs, ID 83637		EMS Responders & Capability:		Andrea Colson, EMTF/MEDL, Ray Mines EMTF/MEDL (t) Ryan Jones, EMP/MEDL(t) ,ALS Meds,			
		Equipment Available on Scene:		IV, AED, O2			
8. Prepared By (Medical Unit Leader)		Date/Time	10. Reviewed By (Safety Officer)		11. Date/Time		
Emily Nemore MEDL (T)		08/18/24 1610 hrs	/S/ MATTHEW L NELSON		8-18-24 2100		

Finance Message

Please ensure that you use the correct email address.....otherwise, your goodies go to a fire with a similar name in Oregon!

Will the following resources please pay us a visit beneath the Jolly Roger:

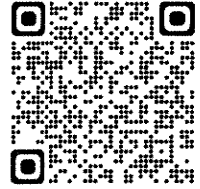
- E-115, Crimson Sky Trucking
- E-80, National Wildland Fire
- E-42, Pine Rim
- E-81, RB+H



Training

REGISTER NOW!

- Complete the Trainee Check In form, via the QR code.
- Go over expectations and goals with Trainer.
- Receive ink in Taskbook and 225 Performance Evaluation.
- Submit Trainee Exit Interview via QR code.
- TNSP close out package will be emailed to Trainee



For more details contact RIST TNSP,
Brian Holmes & Brian Lamphiear

Logistics

ICP Meal Times:

Breakfast: 0600 - 0900

Dinner: 1800 - 2130

Showers:

0530 – 1200

1400 – 2200

INFORMATION

We need photos to share your great work!

Send to

2024.middleforkcomplex@firenet.gov or
visit a Public Information Officer in camp
and include a brief description of the photo.

Lost and found is located at the Middle Fork Complex ICP Information Yurt.

INCIDENT CONTACTS

Ordering:

2024.middleforkcomplex.ordering@firenet.gov

Finance:

2024.middleforkcomplex.finance@firenet.gov

(208) 867-9570

DMOB

2024.middleforkcomplex.demob@firenet.gov

(208) 891-7653

INFO

2024.middleforkcomplex@firenet.gov

(208) 992-3045

Thank You!

Middle Fork Complex



Wapiti



Bull Trout

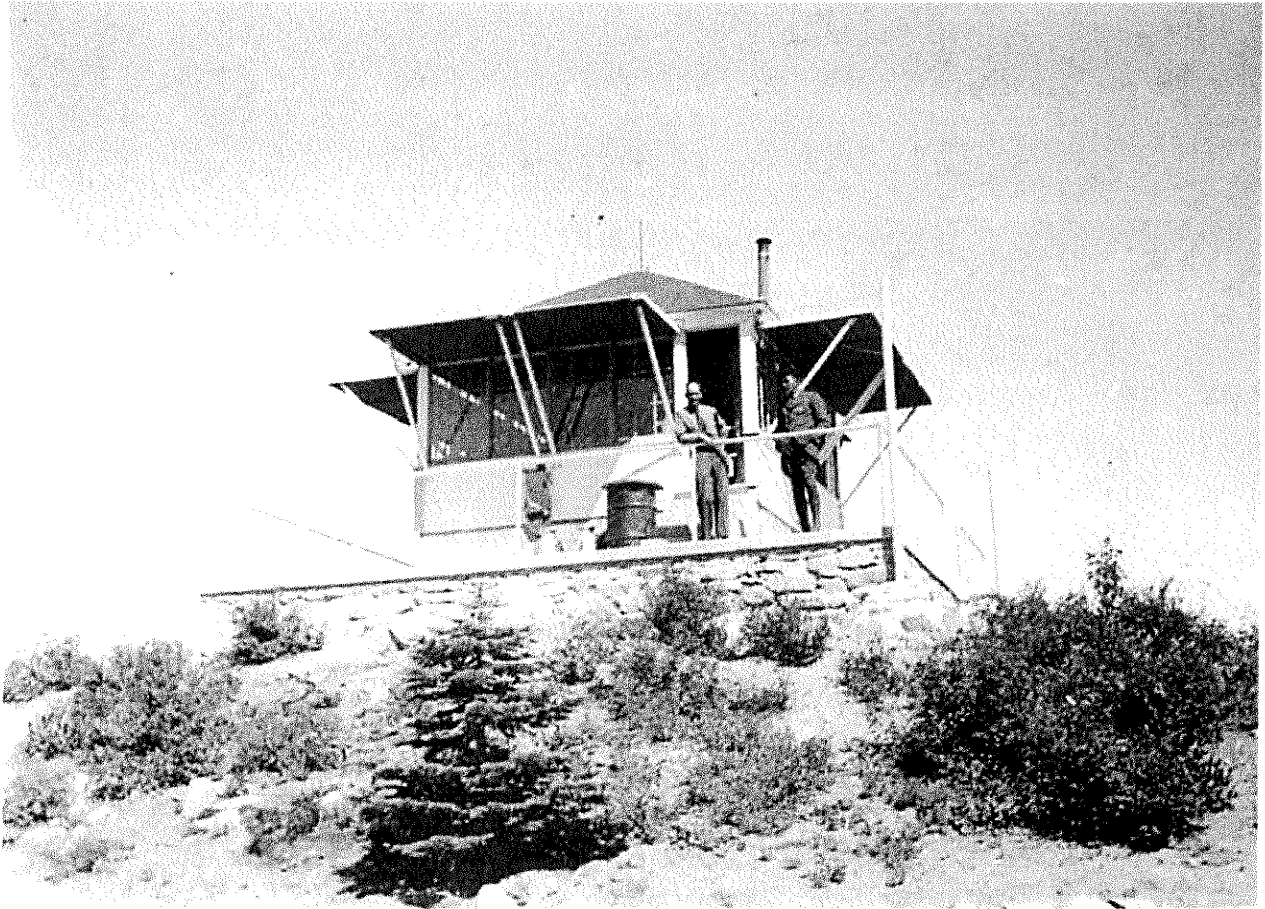


Boise Forest



Resource Advisor Message

History of the Deadwood Lookout



The Deadwood Lookout is an historic 14x14-ft. lookout on the Boise National Forest. It was originally built in 1916 with a log crib platform. A 12'x12' frame cabin with cupola replaced it in 1924. In 1934, the ground-mounted L-4 cab was built and put into service in 1936. After a complete restoration that took 10 years, Deadwood Lookout is close to how it looked when it went into service in 1936 and is on the National Historic Lookout Register. It was actively used as a fire lookout until 1972. The structure is perched atop Deadwood Mountain. If you decide to come back to Idaho, you can rent this lookout on [recreation.gov](https://www.recreation.gov).

From the Idaho Statesman on January 28, 1945: *"The Garden Valley district had two women lookouts and one of them, Mrs. Edna Wells is a service wife. Mrs. Wells was on Deadwood lookout, and her only company was her dog 'and a collection of teddy bears.' She had her car with her and hauled her water from the Bog Guard Station three miles away. During late June, Mrs. Wells worked on telephone maintenance, digging post holes and driving a team of horses."*

TENTATIVE DEMOB SCHEDULE

AUGUST 19

Incident / Request Number	Resource	Demob Time
Middle Fork Complex/C-8	HC2IA Miller Timber Services	

AUGUST 20

Incident / Request Number	Resource	Demob Time
Wapiti/E-9	CHP2 Flying V Tree	
Middle Fork Complex/E-83	ENG6 Denver FPD Brush 61	
Middle Fork Complex/C-7	HC2IA Boise Crew 3	
Middle Fork Complex/O-39	BCMG Daniel Nation	
Middle Fork Complex/O-40	ICT4 Sam Lewis	
Middle Fork Complex/O-67	REAF Matt Robinson	
Middle Fork Complex/O-72	REAF Lucas Roy	
Wapiti/E-29	ENG3 NV-WID Engine 2309	
Middle Fork Complex/O-85	RADO Matthew Edison	

AUGUST 21

Incident / Request Number	Resource	Demob Time
Middle Fork Complex/O-48	TFLD William Sanders	
Middle Fork Complex/O-61	RCDM Lily Sher	
Bull Trout/O-21	SEC1 Matthew Sitterson	

DEMOB STEPS

Review the schedule for your assigned check out time and date. On your Demob Day (or before), complete the following items:

- FINANCE first visit: **IF** you have any remaining documents required by Finance (i.e., shift tickets, CTRs, contracts, AD paperwork, pre & post equipment inspections). **PLEASE TURN THEM IN NOW.** Then Finance will work on them.
- SUPPLY: Return any items checked out from Supply.
- COMM: Return any items checked out from Comm.
- TRAINEES: Please close via QR code.
- FINANCE second visit: Get your signed Finance Documents.
- WEED WASH: Complete Weed Wash.
- DEMOB: Visit Demob or **Scan the Demob QR code to complete Demob.** If all above steps are, completed you will then be released from this incident so to be available for the next one.



DEMOB REQUIRING FLIGHTS



If you are flying, please contact DMOB at least 3 days in advance of your Demob. Use the QR code, call, text or email the following: ✓ Name on ID ✓ gender ✓ email for itinerary ✓ phone number ✓ date and time you are able to leave ICP ✓ date of flights ✓ airports you are flying to and from and ✓ suggested flights and frequent flying number (optional)

If you have any questions or need any help, contact DMOB at (208) 891-7380

2024.middleforkcomplex.demob@firenet.gov

Incident Action Plan

MIDDLE FORK COMPLEX

ID-BOF-000936

8/19/2024 Day/Night

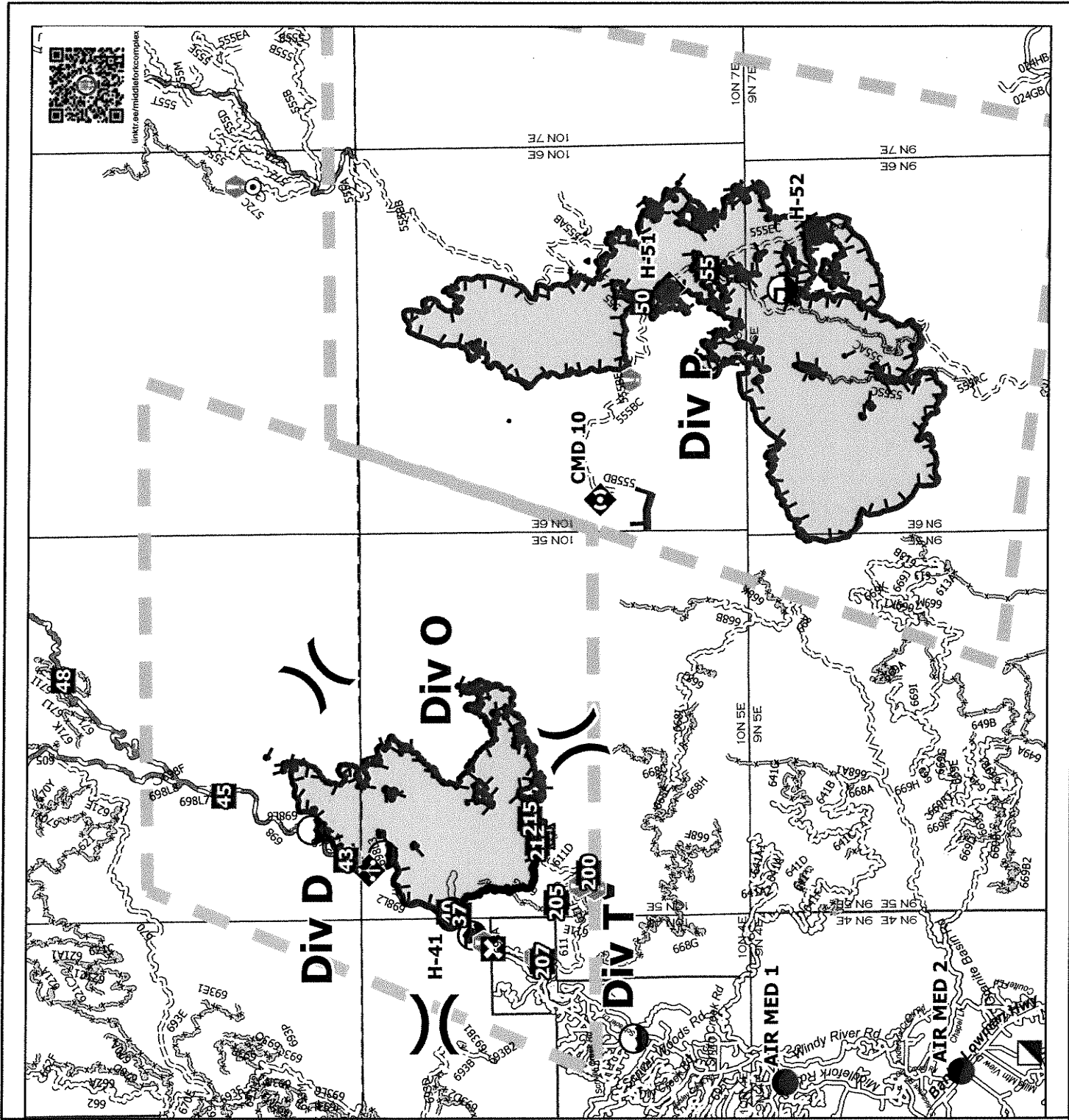
15628 acres

●	Helispot
×	Division Break
■	Incident Command Post
□	Drop Point
■	Closure
⊙	Hot Spot - Spot Fire
▲	Hazard
*	Value at Risk
⊕	Gate
⊕	Bridge
⊕	Road Repair
⊕	Repair Point
⊕	Culvert
⊕	Mobile Weather Unit
⊕	Repeater
⊕	Dip Site
⊕	Draft Site
⊕	Access Route
⊕	Road Repair
⊕	Temporary Flight Restriction
⊕	Fire Edge (Field Collection)
⊕	Contained
⊕	Uncontained
⊕	Wildfire Daily Fire Perimeter
⊕	Road
⊕	Road, high clearance
⊕	Road, Closed
⊕	Road, Paved
⊕	Road, Dirt/Gravel
⊕	Road, high clearance
⊕	FS Closed Road



0 1 2 3
Miles

1:132,813 | Inceasy | 8/18/2024 2:16
North American 1983 Datum, Lat/Long Grid



Incident Action Plan

WAPITI

ID-BOF-000683

8/19/2024 Day/Night

4943 acres

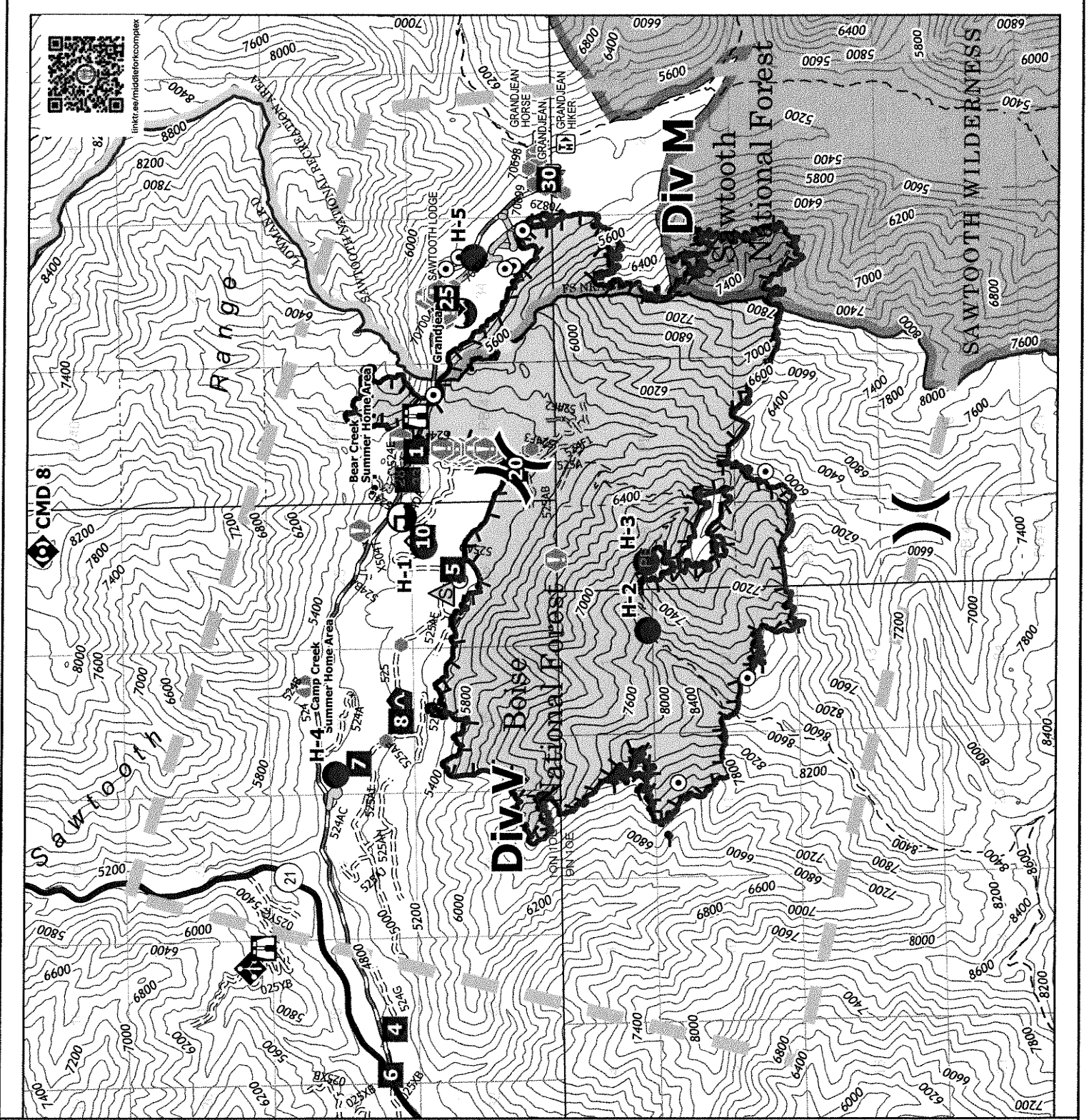
■	Structure
●	Helispot
×	Division Break
○	Drop Point
□	Lookout
⊙	Hot Spot - Spot Fire
▲	Safety Zone
⊛	Value at Risk
⊛	Other
⊛	Bridge
⊛	Stream Crossing
⊛	Culvert
⊛	Mobile Weather Unit
⊛	Internet Access
⊛	Repeater
⊛	Dip Site
⊛	Draft Site
⊛	Access Route
⊛	Highlighted Feature
⊛	Temporary Flight Restriction
⊛	Uncontained
⊛	Wildfire Daily Fire Perimeter
⊛	Secondary Highway
⊛	Road, Dirt/Gravel
⊛	Road, high clearance
⊛	FS Closed Road
⊛	FS Wilderness Boundary
⊛	Other Designated Boundary



0 0.5 1 1.5
Miles

1:60,000 | mcairey | 8/18/2024 2:08

North American 1983 Datum, Lallong Grid



linktr.ee/middletoncomplex

Incident Action Plan

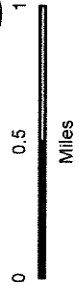
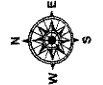
BULLTROUT

ID-BOF-000699

8/19/2024 Day/Night

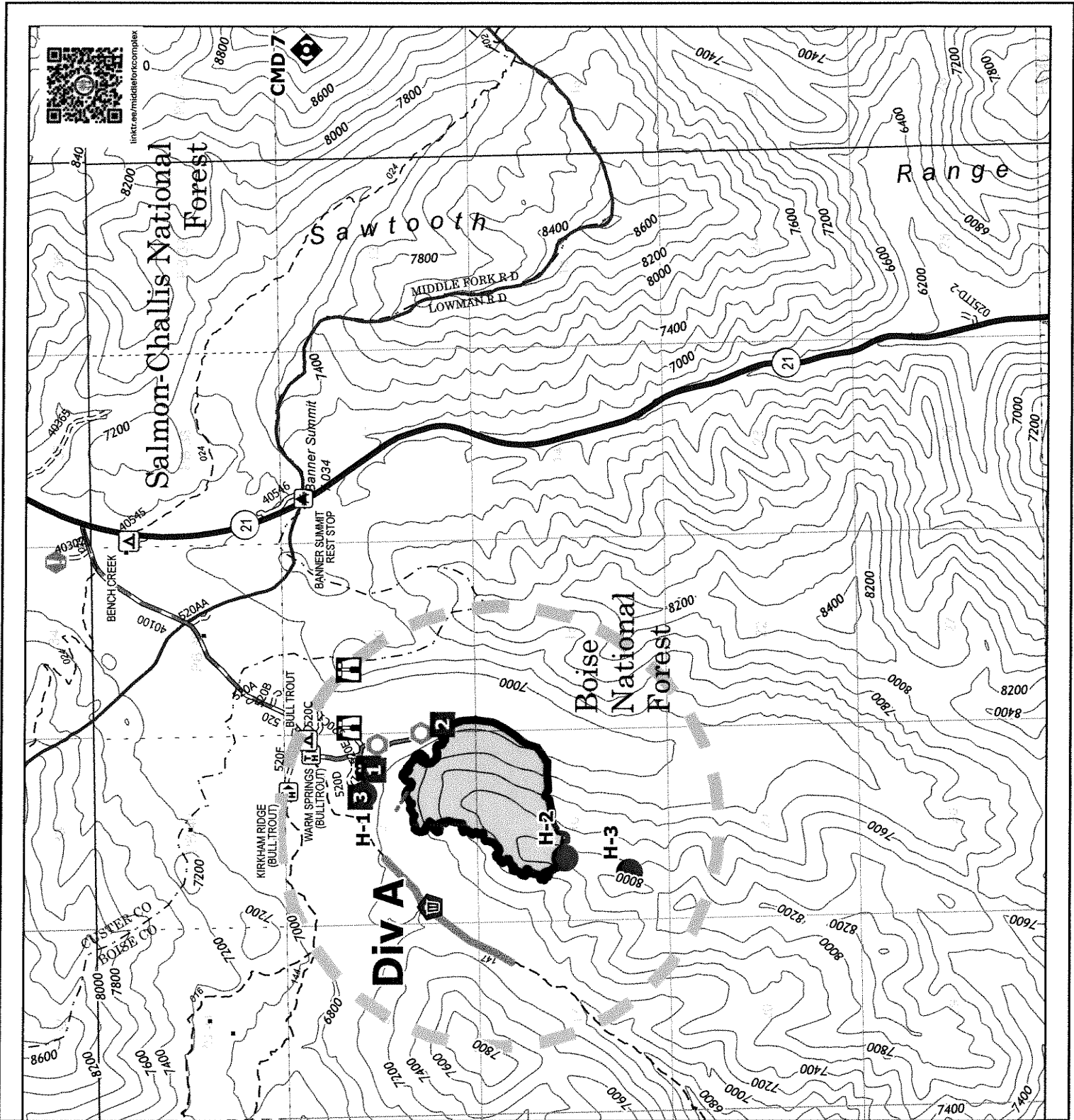
271 acres

■	Structure
●	Helispot
■	Drop Point
■	Camp
■	Lookout
●	Value at Risk
○	Landmark
○	Clean Up Area
◆	Repeater
◆	Other
—	Repair Line
—	Temporary Flight Restriction
■	Contained
■	Uncontained
■	Wildfire Daily Fire Perimeter
■	Secondary Highway
—	Road, Paved
—	Road, Dirt/Gravel
—	Road, high clearance

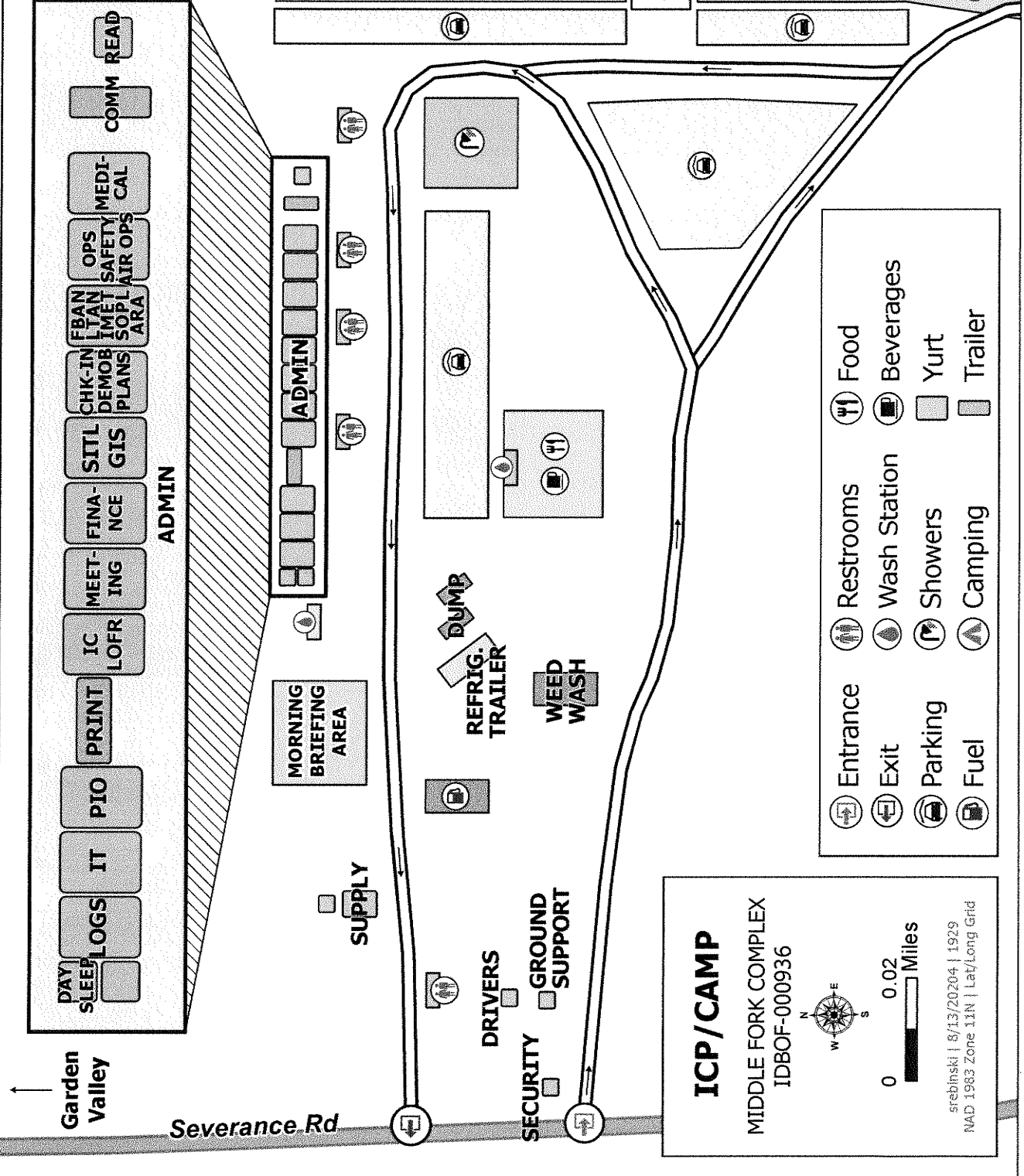


1:45,000 | mcarey | 8/18/2024 2:11

North American 1983 Datum, Lat/Long Grid



linktr.ee/middleforkcomplex



Division Supply Order

Order Number:		Date -		Division -	
Order taken in Communications by:				RADO or COML confirmation:	
DIVS Supervisor:				Date & Time Needed:	
Delivery Contact:				Delivery Location:	
Cell Phone #:				UTM	
Radio Channel Number:				Lat:	Long:
Mode of Delivery (Circle Means):		Ground Support		DP/LZ:	
Division will pick up		Deliver to Helibase		Other:	
SPUL Confirmation can be filled as needed (Circle): Yes or No - Requiring at least 24 hours to fill.					
Item	Description:	Quantity	Comments		
	Hose Lay Kit , 1000 Feet = (10) 1 1/2" Hose; and 5 Each of: 1" Hose, 1 1/2" Wyes, 1 1/2" to 1" Reducers, and 1" Forester Nozzles				
1		1000 Feet	4	4000 Feet	
2		2000 Feet	5	5000 Feet	
3		3000 Feet	6	6000 Feet	
	Garden Hose Kit , 500 Feet = (10) 3/4" Hose, and (5 Each): 3/4" Wye, 3/4" Shutoff, 3/4" Nozzle, 1" Wye, and 1" to 3/4" Reducers)				
7		500 Feet	10	3000 Feet	
8		1000 Feet	11	4000 Feet	
9		2000 Feet	12	5000 Feet	
Water Handling Equipment:			Item #	Description	Quantity
13	Hose: 1 1/2" (100')	LG		Line Tools:	
14	1" (100')	LG	40	Pulaski	EA
15	3/4" (50' Toy/Garden)	LG	41	Combi	EA
16	Gated Wye: 1 1/2"	EA	42	McCloud	EA
17	1"	EA	43	Shovel	EA
18	3/4"	EA	44	Water: Cubies	EA
19	Reducer: 1 1/2" X 1"	EA	45	Bottled	CS
20	1" X 3/4"	EA	46	Gatorade	CS
21	Nozzle: 1" Forester	EA	47	MRE's	BX
22	1" Mystery (KK)	EA	48	Flagging: Lime Green	RO
23	1 1/2" Red Barrel	EA	49	Pink	RO
24	3/4" Brass		50	Orange	RO
25	Shutoff Values: 3/4"	EA	51	Killer Tree	RO
26	Pumpkin or Porta-Tank, 1800 gal.	EA	52	Wrap, Structural	RO
27	Blivets, Slingable 55 Gal	EA	53	Other:	
28	Mopup Kits 3 Person	EA	54		
29	Backpack Pumps	EA	55		
30	Sprinkler Kits	EA	56		
31	Foam (5 GALS)	PL	57		
32	Mark III Kits	KT	58		
33	Drip Torch	EA	59		
34	Fusees (72/Case)	CS	60		
35	Chainsaw Kit	KT	61	Bar Oil	Gal
36	Fuel, 5 gallons:	Gas	Can	62	Diesel, 5 gallon
37	Mark III (20:1)		Can	63	
38	Chainsaw (50:1)	Mixed	Can	64	Not Mixed
				65	2.6 oz/ Gal
					12.8 oz/ 5 Gal
39	Drip Torch (3:2)		Can		BT

GREAT BASIN CONSUMABLE CHAINSAW PARTS LIST

PART	034/341	360/MS160	MS361	MS362	038/381	044/MS140	MS441	460/MS461	MS462	MS500i	0640/650	MS660	MS880	
Spark Plug (NFESH 000344)	Bosch WSR6F NGK BPMR7A Champion RC6Y 9512-933-2380 9460-624-0801 0000-958-1022 1125-007-1040	Bosch WSR6F NGK BPMR7A Champion RC6Y 9512-933-2380 9460-624-0801 0000-958-1022 1125-007-1040	Bosch WSR6F NGK BPMR7A Champion RC6Y 9512-933-2380 9460-624-0801 0000-958-1022 1125-007-1040	Bosch WSR6F NGK BPMR7A Champion RC6Y 9512-933-2380 9460-624-0801 0000-958-1022 1125-007-1040	Bosch WSR6F NGK BPMR7A Champion RC6Y 9512-933-2380 9460-624-0801 0000-958-1022 1125-007-1040	Bosch WSR6F NGK BPMR7A Champion RC6Y 9512-933-2380 9460-624-0801 0000-958-1022 1125-007-1040	Bosch WSR6F NGK BPMR7A Champion RC6Y 9512-933-2380 9460-624-0801 0000-958-1022 1125-007-1040	Bosch WSR6F NGK BPMR7A Champion RC6Y 9512-933-2380 9460-624-0801 0000-958-1022 1125-007-1040	Bosch WSR6F NGK BPMR7A Champion RC6Y 9512-933-2380 9460-624-0801 0000-958-1022 1125-007-1040	Bosch USR7AC NGK CWR6H 9512-003-3146 9460-624-0801 0000-958-1022 1125-007-1040	Bosch WSR6F NGK BPMR7A Champion RC6Y 9512-933-2380 9460-624-0801 0000-958-1022 1125-007-1040	Bosch WSR6F NGK BPMR7A Champion RC6Y 9512-933-2380 9460-624-0801 0000-958-1022 1125-007-1040	Bosch WSR6F NGK BPMR7A Champion RC6Y 9512-933-2380 9460-624-0801 0000-958-1022 1125-007-1040	Bosch WSR6F NGK BPMR7A Champion RC6Y 9512-933-2380 9460-624-0801 0000-958-1022 1125-007-1040
Needle Cage Bearing (NFESH 066565)														
E Clip (NFESH 066517)														
Retaining Washer for Rim Sprocket														
Rim Sprocket Kit 3/8" - 7T														
Rim Sprocket 3/8" 7T (NFESH 06666)	0000-642-1223	0000-642-1023	0000-642-1223	0000-642-1223	0000-642-1223	0000-642-1223	0000-642-1223	0000-642-1223	0000-642-1223	0000-642-1223	0000-642-1223	0000-642-1223	0000-642-1223	
Rim sprocket kit 3/8" - 8T														
Clutch Drum														
Rim Sprocket 3/8" - 8T														
Clutch														
Chain Adjuster Kit / Spur Gear														
Bump Stop														
Starter Rope w/handle														
Worm Gear (Oiler)														
Manifold Boot														
Fuel Filter / Pickup Body														
Tank Vent														
Cap for Fuel Injection Pump														
Inner Side Plate														
Bar Nut / Collar Nut (NFESH 06661)														
Air Filter - HD (NFESH 066756)														
Pre Filter - OEM														
MaxFlow Air Filter														
Filter Oil														
Bearing Grease - Tube														
Bar oil - Gallon (NFESH 1880)														
Bar oil - Quart (NFESH 1869)														
2 Cycle Oil - Quart (NFESH 0241)														
2 Cycle Oil: STHL HD														
Non-Ethanol Fuel														
Felling Wedges														
6" Pocket - (NFESH 0515)														
8" Smooth - (NFESH 0684)														
8" Riffed - (NFESH 0516)														
12" - (NFESH 0272)														
Round File - 7/32" (NFESH 0245) or 13/64"														
Raker File - 8" Flat File														
Scrench - Combo Wrench (NFESH 0875)														
Chain STHL Rapid-Super (RS) - 3/8" PITCH - .050" GAUGE														
20" - 72 DR	3623-005-0072	3623-005-0072	3623-005-0072	3623-005-0072	3623-005-0072	3623-005-0072	3623-005-0072	3623-005-0072	3623-005-0072	3623-005-0072	3623-005-0072	3623-005-0072	3623-005-0072	
25" - 84 DR (NFESH 006500)	3623-005-0084	3623-005-0084	3623-005-0084	3623-005-0084	3623-005-0084	3623-005-0084	3623-005-0084	3623-005-0084	3623-005-0084	3623-005-0084	3623-005-0084	3623-005-0084	3623-005-0084	
28" - 91 DR	3623-005-0091	3623-005-0091	3623-005-0091	3623-005-0091	3623-005-0091	3623-005-0091	3623-005-0091	3623-005-0091	3623-005-0091	3623-005-0091	3623-005-0091	3623-005-0091	3623-005-0091	
32" - 105 DR	N/A	N/A	N/A	N/A	N/A	N/A	N/A	N/A	N/A	N/A	N/A	N/A	N/A	
Chain STHL Rapid-Super-Full Slip (RSF) - 3/8" PITCH - .050" GAUGE														
20" - 72 DR	3676-005-0072	3676-005-0072	3676-005-0072	3676-005-0072	3676-005-0072	3676-005-0072	3676-005-0072	3676-005-0072	3676-005-0072	3676-005-0072	3676-005-0072	3676-005-0072	3676-005-0072	
25" - 84 DR	3676-005-0084	3676-005-0084	3676-005-0084	3676-005-0084	3676-005-0084	3676-005-0084	3676-005-0084	3676-005-0084	3676-005-0084	3676-005-0084	3676-005-0084	3676-005-0084	3676-005-0084	
28" - 91 DR	3676-005-0091	3676-005-0091	3676-005-0091	3676-005-0091	3676-005-0091	3676-005-0091	3676-005-0091	3676-005-0091	3676-005-0091	3676-005-0091	3676-005-0091	3676-005-0091	3676-005-0091	
32" - 105 DR	N/A	N/A	N/A	N/A	N/A	N/A	N/A	N/A	N/A	N/A	N/A	N/A	N/A	
Guide Bars (STHL ROLLOMATIC - ES) - 3/8" PITCH - .050" GAUGE														
20"	3003-000-8822	3003-000-8822	3003-000-8822	3003-000-8822	3003-000-8822	3003-000-8822	3003-000-8822	3003-000-8822	3003-000-8822	3003-000-8822	3003-000-8822	3003-000-8822	3003-000-8822	
25" (NFESH 06658A)	3003-000-8830	3003-000-8830	3003-000-8830	3003-000-8830	3003-000-8830	3003-000-8830	3003-000-8830	3003-000-8830	3003-000-8830	3003-000-8830	3003-000-8830	3003-000-8830	3003-000-8830	
28"	N/A	N/A	N/A	N/A	N/A	N/A	N/A	N/A	N/A	N/A	N/A	N/A	N/A	
32"	N/A	N/A	N/A	N/A	N/A	N/A	N/A	N/A	N/A	N/A	N/A	N/A	N/A	

The items listed here are considered consumable. Replacement requests for these parts should be filled at the Incident Supply Unit or Local Cache and marked off. If the order is unable to be filled it should be sent to Ordering for S# assignment and sent to a Buying Team or purchasing support for the incident acquisition, or provided to the requesting resource for fill at the home unit.

Items highlighted in gray should be fillable at most cache locations.

REQUESTING PARTY: If the items you are ordering are not listed above, an OF-296 (Property Loss/Damage Form) MAY be required.

Be descriptive on your orders and fill the order form out completely!

MEDICAL PLAN (ICS 206 WF)

Controlled Unclassified Information//Basic

Medical Incident Report

FOR A NON-EMERGENCY INCIDENT, WORK THROUGH CHAIN OF COMMAND TO REPORT AND TRANSPORT INJURED PERSONNEL AS NECESSARY.

FOR A MEDICAL EMERGENCY: IDENTIFY ON SCENE INCIDENT COMMANDER BY NAME AND POSITION AND ANNOUNCE "MEDICAL EMERGENCY" TO INITIATE RESPONSE FROM IMT COMMUNICATIONS/DISPATCH.

Use the following items to communicate situation to communications/dispatch.

1. CONTACT COMMUNICATIONS / DISPATCH (Verify correct frequency prior to starting report)

Ex: "Communications, Div. Alpha. Stand-by for Emergency Traffic."

2. INCIDENT STATUS: Provide incident summary (including number of patients) and command structure.

Ex: "Communications, I have a Red priority patient, unconscious, struck by a falling tree. Requesting air ambulance to Forest Road 1 at (Lat./Long.) This will be the Trout Meadow Medical, IC is TFLD Jones. EMT Smith is providing medical care."

Severity of Emergency / Transport Priority	<input type="checkbox"/> RED / PRIORITY 1 Life or limb threatening injury or illness. Evacuation need is IMMEDIATE <i>Ex: Unconscious, difficulty breathing, bleeding severely, 2° – 3° burns more than 4 palm sizes, heat stroke, disoriented.</i> <input type="checkbox"/> YELLOW / PRIORITY 2 Serious Injury or illness. Evacuation may be DELAYED if necessary. <i>Ex: Significant trauma, unable to walk, 2° – 3° burns not more than 1-3 palm sizes.</i> <input type="checkbox"/> GREEN / PRIORITY 3 Minor Injury or illness. Non-Emergency transport <i>Ex: Sprains, strains, minor heat-related illness.</i>	
Nature of Injury or Illness & Mechanism of Injury		<i>Brief Summary of Injury or Illness (Ex: Unconscious, Struck by Falling Tree)</i>
Transport Request		<i>Air Ambulance / Short Haul/Hoist Ground Ambulance / Other</i>
Patient Location		<i>Descriptive Location & Lat. / Long. (WGS84)</i>
Incident Name		<i>Geographic Name + "Medical" (Ex: Trout Meadow Medical)</i>
On-Scene Incident Commander		<i>Name of on-scene IC of Incident within an Incident (Ex: TFLD Jones)</i>
Patient Care		<i>Name of Care Provider (Ex: EMT Smith)</i>

3. INITIAL PATIENT ASSESSMENT: Complete this section for each patient as applicable (start with the most severe patient)

Patient Assessment: See IRPG page 106

Treatment:

4. TRANSPORT PLAN:

Evacuation Location (if different): (Descriptive Location (drop point, intersection, etc.) or Lat. / Long.) Patient's ETA to Evacuation Location:

Helispot / Extraction Site Size and Hazards:

5. ADDITIONAL RESOURCES / EQUIPMENT NEEDS:

Example: Paramedic/EMT, Crews, Immobilization Devices, AED, Oxygen, Trauma Bag, IV/Fluid(s), Splints, Rope rescue, Wheeled litter, HAZMAT, Extrication

6. COMMUNICATIONS: Identify State Air/Ground EMS Frequencies and Hospital Contacts as applicable

Function	Channel Name/Number	Receive (RX)	Tone/NAC *	Transmit (TX)	Tone/NAC *
COMMAND					
AIR-TO-GRND					
TACTICAL					

7. CONTINGENCY: Considerations: If primary options fail, what actions can be implemented in conjunction with primary evacuation method? Be thinking ahead.

8. ADDITIONAL INFORMATION: Updates/Changes, etc.

REMEMBER: Confirm ETA's of resources ordered. Act according to your level of training. Be Alert. Keep Calm. Think Clearly. Act Decisively.