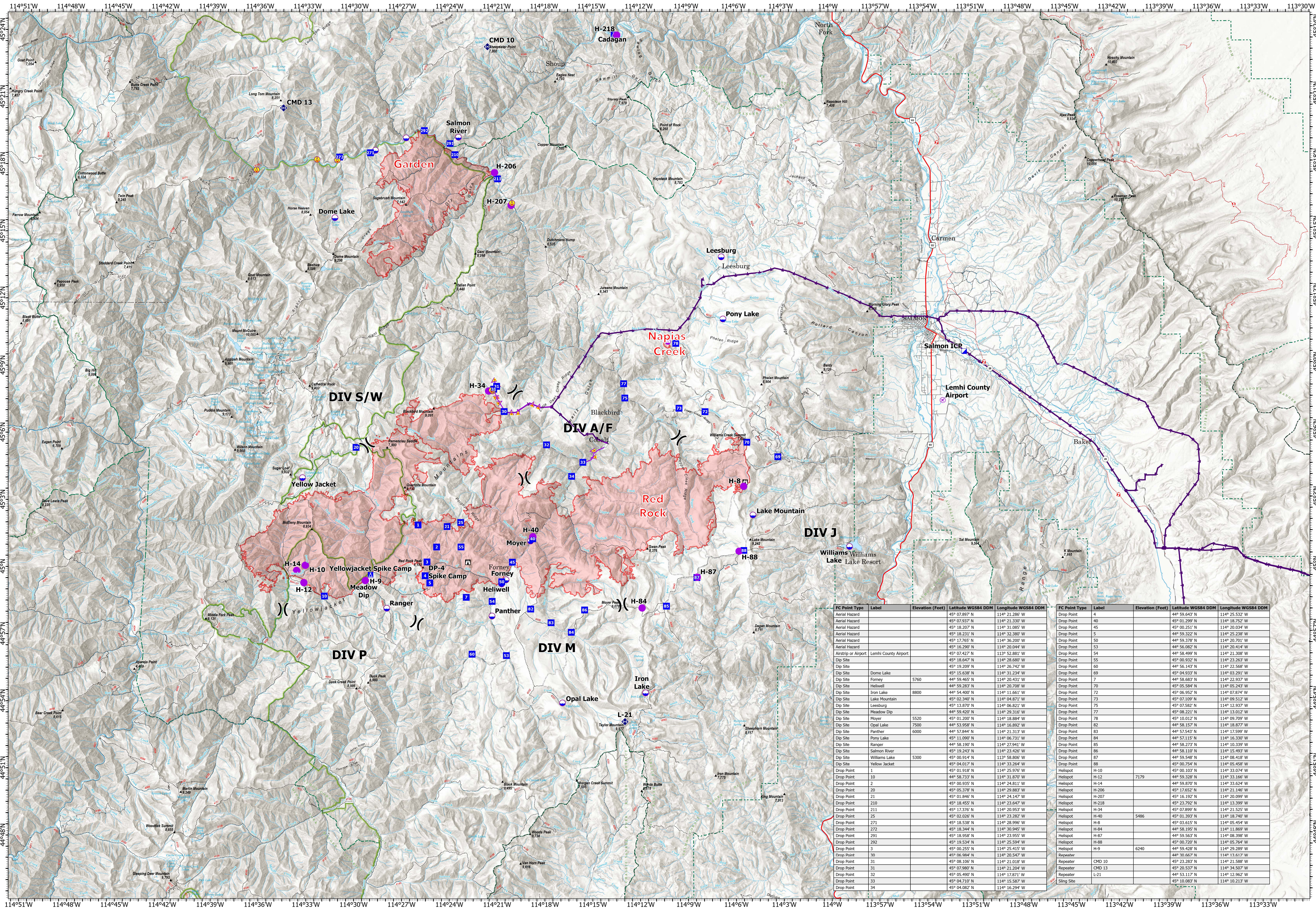


Map created: 10/28/2024 at 2037 hr



FC Point Type	Label	Elevation (Feet)	Latitude WGS84 DDM	Longitude WGS84 DDM	FC Point Type	Label	Elevation (Feet)	Latitude WGS84 DDM	Longitude WGS84 DDM
Aerial Hazard			45° 07.897' N	114° 21.286' W	Drop Point	4		44° 59.643' N	114° 25.532' W
Aerial Hazard			45° 07.937' N	114° 21.330' W	Drop Point	40		44° 01.299' N	114° 18.752' W
Aerial Hazard			45° 18.207' N	114° 31.085' W	Drop Point	45		45° 00.251' N	114° 20.034' W
Aerial Hazard			45° 18.231' N	114° 32.380' W	Drop Point	5		44° 59.322' N	114° 25.238' W
Aerial Hazard			45° 17.765' N	114° 36.200' W	Drop Point	50		44° 59.378' N	114° 20.701' W
Aerial Hazard			45° 16.290' N	114° 20.044' W	Drop Point	53		44° 56.082' N	114° 20.414' W
Airstrip or Airport	Lemhi County Airport		45° 07.427' N	113° 52.881' W	Drop Point	54		44° 58.499' N	114° 21.308' W
Dip Site			45° 18.647' N	114° 28.680' W	Drop Point	55		45° 00.932' N	114° 23.263' W
Dip Site			45° 19.209' N	114° 26.742' W	Drop Point	60		44° 56.143' N	114° 22.568' W
Dip Site	Dome Lake		45° 15.638' N	114° 31.234' W	Drop Point	69		45° 04.933' N	114° 03.291' W
Dip Site	Forney	5760	44° 59.465' N	114° 20.431' W	Drop Point	7		44° 58.683' N	114° 22.937' W
Dip Site	Helowell		44° 59.283' N	114° 20.708' W	Drop Point	70		45° 05.584' N	114° 05.243' W
Dip Site	Iron Lake	8800	44° 54.400' N	114° 11.661' W	Drop Point	72		45° 06.952' N	114° 07.874' W
Dip Site	Lake Mountain		45° 02.340' N	114° 04.871' W	Drop Point	73		45° 07.109' N	114° 09.512' W
Dip Site	Leesburg		45° 13.870' N	114° 06.821' W	Drop Point	75		45° 07.582' N	114° 12.937' W
Dip Site	Meadow Dip		44° 59.420' N	114° 29.316' W	Drop Point	77		45° 08.221' N	114° 13.012' W
Dip Site	Moyer	5530	45° 01.200' N	114° 18.894' W	Drop Point	78		45° 10.012' N	114° 09.709' W
Dip Site	Opal Lake	7500	44° 53.958' N	114° 16.892' W	Drop Point	82		44° 58.157' N	114° 18.877' W
Dip Site	Panther	6000	44° 57.844' N	114° 21.313' W	Drop Point	83		44° 57.543' N	114° 17.599' W
Dip Site	Pony Lake		45° 11.090' N	114° 06.731' W	Drop Point	84		44° 57.115' N	114° 16.330' W
Dip Site	Ranger		44° 58.190' N	114° 27.941' W	Drop Point	85		44° 58.273' N	114° 10.379' W
Dip Site	Salmon River		45° 19.243' N	114° 23.426' W	Drop Point	86		44° 58.110' N	114° 15.493' W
Dip Site	Williams Lake	5300	45° 00.914' N	113° 58.806' W	Drop Point	87		44° 59.548' N	114° 08.418' W
Drop Point	1		45° 01.918' N	114° 25.976' W	Drop Point	88		45° 00.754' N	114° 05.458' W
Drop Point	10		44° 58.733' N	114° 31.870' W	Helispot	H-10		45° 00.103' N	114° 33.074' W
Drop Point	2		45° 00.935' N	114° 24.811' W	Helispot	H-12	7179	44° 59.328' N	114° 33.166' W
Drop Point	20		45° 05.378' N	114° 29.883' W	Helispot	H-14		44° 59.870' N	114° 33.624' W
Drop Point	21		45° 01.846' N	114° 24.147' W	Helispot	H-206		45° 17.652' N	114° 21.146' W
Drop Point	210		45° 18.455' N	114° 23.647' W	Helispot	H-207		45° 16.192' N	114° 20.092' W
Drop Point	211		45° 17.376' N	114° 20.953' W	Helispot	H-218		45° 23.792' N	114° 13.399' W
Drop Point	25		45° 02.026' N	114° 23.282' W	Helispot	H-34		45° 07.899' N	114° 21.525' W
Drop Point	271		45° 18.538' N	114° 28.996' W	Helispot	H-40	5486	45° 01.393' N	114° 18.740' W
Drop Point	272		45° 18.344' N	114° 30.945' W	Helispot	H-8		45° 03.615' N	114° 05.454' W
Drop Point	291		45° 18.908' N	114° 23.955' W	Helispot	H-84		44° 58.195' N	114° 11.869' W
Drop Point	292		45° 19.534' N	114° 25.594' W	Helispot	H-87		44° 59.563' N	114° 08.388' W
Drop Point	3		45° 00.255' N	114° 25.415' W	Helispot	H-88		45° 00.720' N	114° 05.764' W
Drop Point	30		45° 06.984' N	114° 20.547' W	Helispot	H-9	6240	44° 59.428' N	114° 29.289' W
Drop Point	31		45° 08.106' N	114° 21.018' W	Repeater	CMD 10		44° 30.667' N	114° 13.617' W
Drop Point	31		45° 07.980' N	114° 21.294' W	Repeater	CMD 13		45° 20.537' N	114° 24.507' W
Drop Point	32		45° 05.490' N	114° 17.211' W	Repeater	L-21		44° 53.117' N	114° 12.862' W
Drop Point	33		45° 04.710' N	114° 15.587' W	Sling Site			45° 10.083' N	114° 10.213' W
Drop Point	34		45° 04.082' N	114° 16.294' W					

RED ROCK | ID-SCF-240202
 79,260 acres as of 10/24/24 at 2040 MDT

GARDEN | ID-SCF-240221
 13,036 acres as of 10/24/24 at 2032 MDT

- Aerial Hazard
- ⊗ Sling Site
- Drop Point
- ⬢ Repeater
- Transmission Lines
- ⊗ Airstrip or Airport
- X Division Break
- ▲ Camp
- Dip Site
- Wildfire Daily Fire Perimeter
- Helispot
- Incident Command Post
- 🏠 Lookout
- Aerial Hazard

