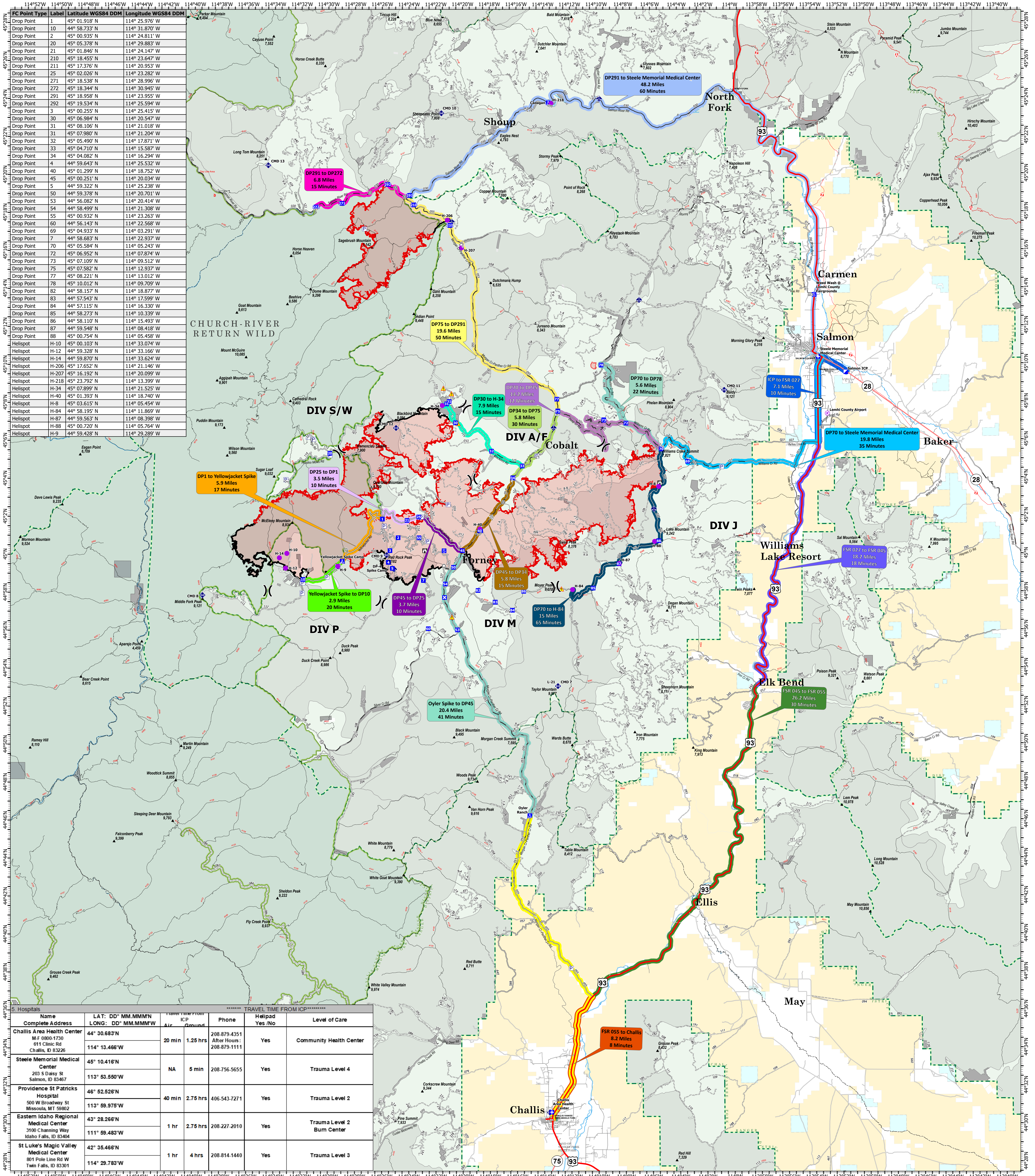
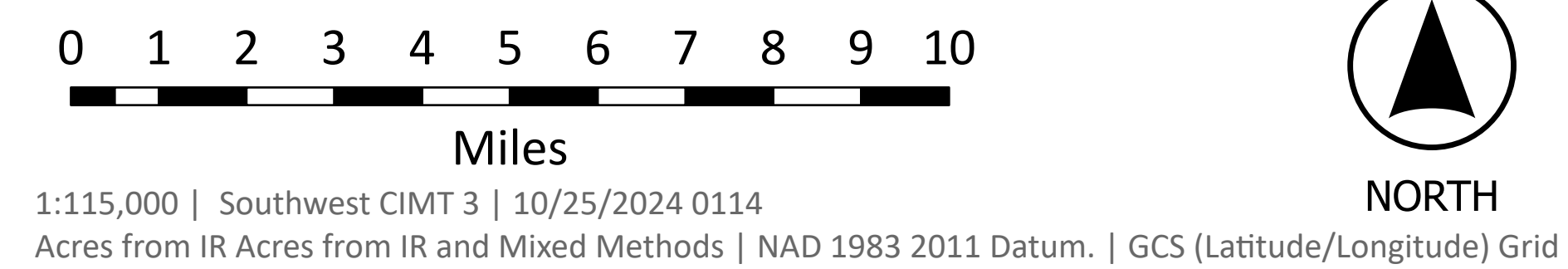


Map created: 10/25/2024 at 0114 hr



RED ROCK | ID-SCF-240202
 79,260 acres as of 10/24/24 at 2040 MDT

GARDEN | ID-SCF-240221
 13,036 acres as of 10/24/24 at 2032 MDT



- ⊙ Airstrip or Airport
- ⊙ Helispot
- ⊗ Division Break
- ⊕ Medical
- ⊕ Incident Command Post
- ⊕ Drop Point
- ⊕ Closure
- ⊕ Camp
- ⊕ Staging Area
- ⊕ Lookout
- ⊙ Landmark
- ⊕ Gate
- ⊕ Bridge
- ⊕ Mobile Weather Unit
- ⊕ Repeater
- ⊕ Hazard
- ⊕ Pump
- ⊕ Water Tank
- ⊕ Access Route
- ⊕ Paved Road
- ⊕ Gravel Road
- ⊕ Dirt (Not Paved)
- ⊕ Road, Not Maintained for Passenger Car
- ⊕ Contained
- ⊕ Uncontained
- ⊕ Wildfire Daily Fire Perimeter
- ⊕ Private Land
- ⊕ USFS Roadless Area
- ⊕ Forest Service Land
- ⊕ Forest Service Wilderness
- ⊕ State Lands
- ⊕ Bureau of Land Management Lands

1:115,000 | Southwest CIMT 3 | 10/25/2024 0114
 Acres from IR Acres from IR and Mixed Methods | NAD 1983 2011 Datum. | GCS (Latitude/Longitude) Grid

