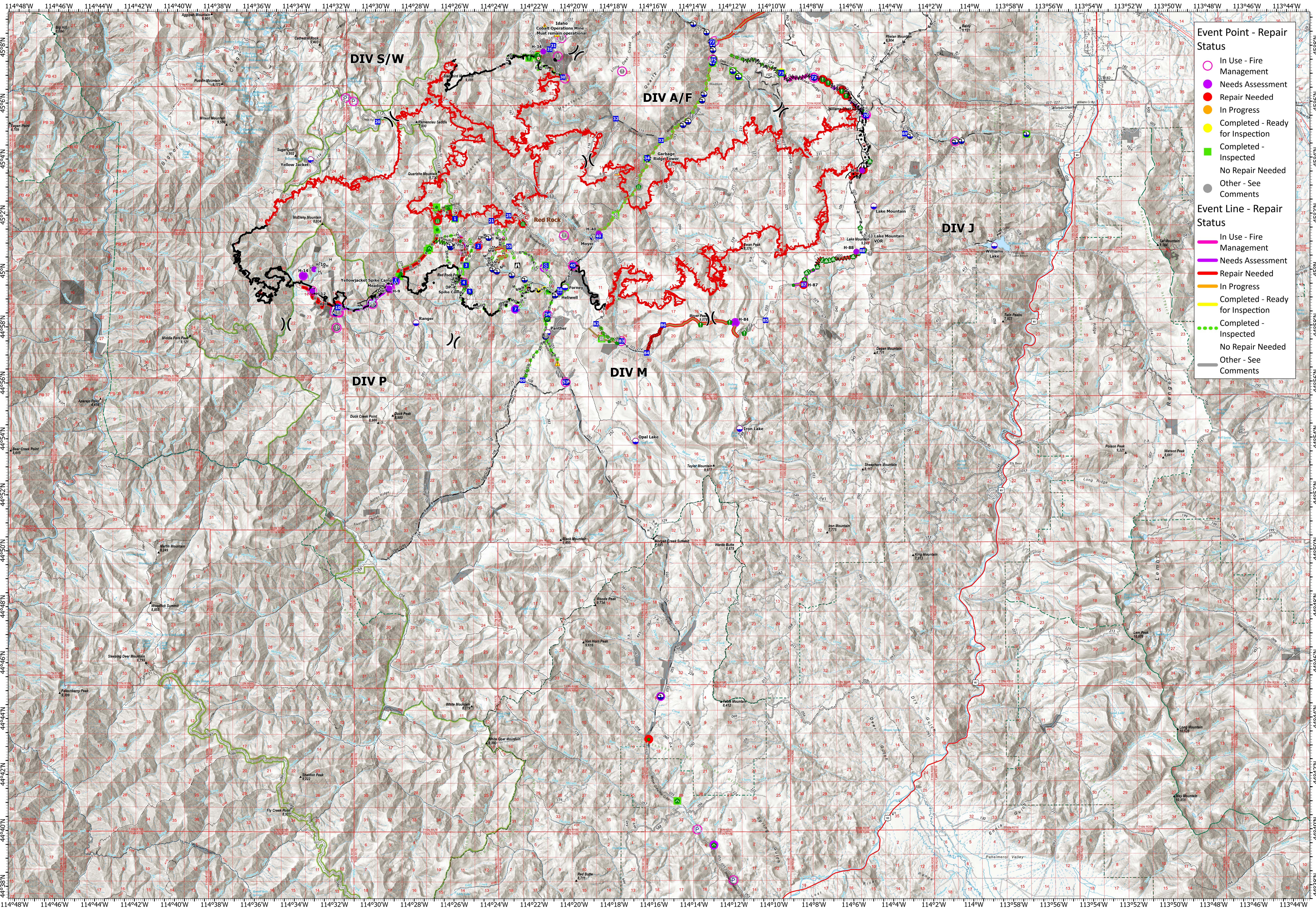


Map created: 10/28/2024 at 2048 hr



**Event Point - Repair Status**

- In Use - Fire Management (Pink circle)
- Needs Assessment (Purple circle)
- Repair Needed (Red circle)
- In Progress (Orange circle)
- Completed - Ready for Inspection (Yellow circle)
- Completed - Inspected (Green circle)
- No Repair Needed (White circle)
- Other - See Comments (Grey circle)

**Event Line - Repair Status**

- In Use - Fire Management (Pink line)
- Needs Assessment (Purple line)
- Repair Needed (Red line)
- In Progress (Orange line)
- Completed - Ready for Inspection (Yellow line)
- Completed - Inspected (Green line)
- No Repair Needed (White line)
- Other - See Comments (Grey line)

**RED ROCK | ID-SCF-240202**  
 79,260 acres as of 10/24/24 at 2040 MDT

**GARDEN | ID-SCF-240221**  
 13,036 acres as of 10/24/24 at 2032 MDT

● Helispot	● Value at Risk	● Dozer Push	● Completed Burnout	● Contained	● Other Property	● Staging Area	● Resource Location	● Dip Site	● Completed Hand Line	● Repair Line
⌘ Division Break	● Gate	● Culvert	● Completed Mixed Construction Line	● Uncontained	● Pump	● Lookout	● Repair Point	● Draft Site	● Completed Construction Line	● Road Repair
■ Drop Point	● Road Repair	● Hazard	● Completed Dozer Line	● Wildfire Daily	● Water Tank	● Hot Spot - Spot Fire	● Landing or Log Deck	● Completed Dozer Line	● Mixed Construction Line	● Contained
■ Camp	● Resource	● Dip Site	● Completed Fuel Break	● Fire Perimeter	● Helispot	● Value at Risk	● Dozer Push	● Completed Fuel Break	● Uncontained	● Wildfire Daily
■ Staging Area	● Location	● Draft Site	● Completed Hand Line	● Private Lands	● Division Break	● Gate	● Culvert	● Completed Road as Line	● Fire Perimeter	● Fire Perimeter
■ Lookout	● Repair Point	● Other Property	● Completed Hand Line	● Access Route	● Drop Point	● Road Repair	● Hazard	● Completed Road as Line		
● Hot Spot - Spot Fire	● Landing or Log Deck	● Pump		● Repair Line	● Camp					
	● Water Tank			● Road Repair						

0 1 2 3 4 5 6 7 Miles

1:76,000 | GB Team 7 | 10/28/2024 2048  
 Acres from IR Acres from IR and Mixed Methods | NAD 1983 2011 Datum. | GCS

