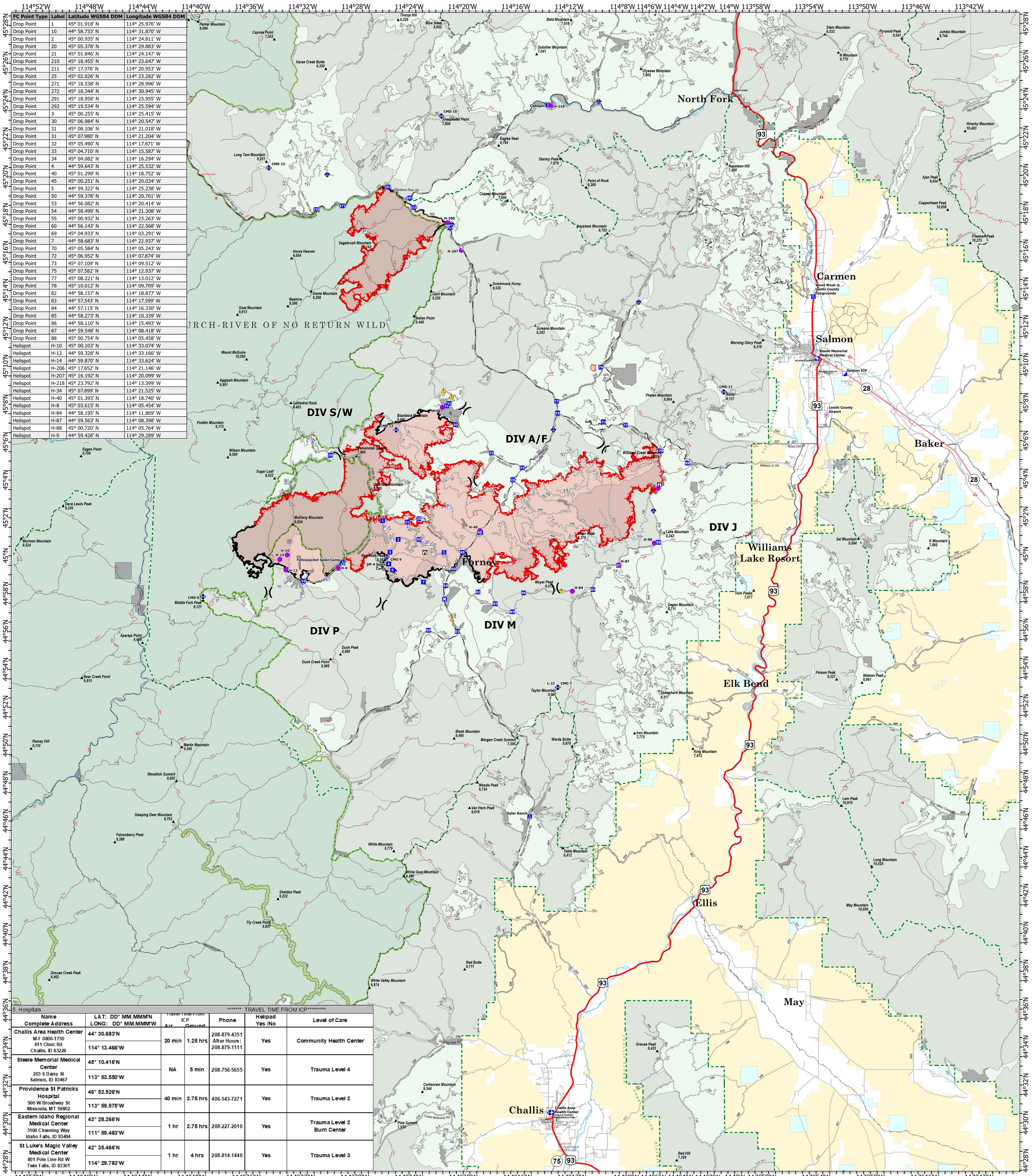


TRANSPORTATION

10/25/2024

RED ROCK AND GARDEN

Map created: 10/25/2024 at 0141 hr

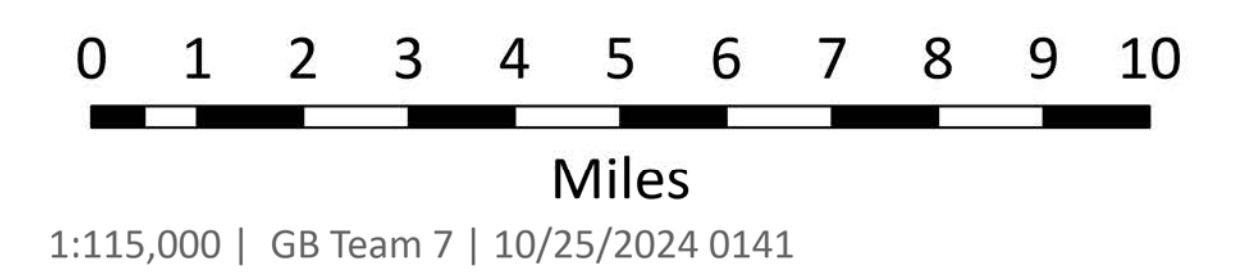


Drop Point Label	Latitude WGS84 DDM	Longitude WGS84 DDM
Drop Point 1	45° 01.918' N	114° 25.976' W
Drop Point 2	45° 05.733' N	114° 31.870' W
Drop Point 3	45° 06.935' N	114° 24.811' W
Drop Point 4	45° 05.378' N	114° 29.883' W
Drop Point 5	45° 01.846' N	114° 24.147' W
Drop Point 6	45° 18.455' N	114° 23.647' W
Drop Point 7	45° 17.376' N	114° 20.953' W
Drop Point 8	45° 02.026' N	114° 23.282' W
Drop Point 9	45° 18.538' N	114° 28.996' W
Drop Point 10	45° 18.344' N	114° 30.945' W
Drop Point 11	45° 18.958' N	114° 23.955' W
Drop Point 12	45° 19.534' N	114° 25.594' W
Drop Point 13	45° 00.255' N	114° 25.415' W
Drop Point 14	45° 06.984' N	114° 20.547' W
Drop Point 15	45° 08.106' N	114° 21.018' W
Drop Point 16	45° 07.980' N	114° 21.204' W
Drop Point 17	45° 05.490' N	114° 17.921' W
Drop Point 18	45° 04.710' N	114° 15.587' W
Drop Point 19	45° 04.082' N	114° 16.294' W
Drop Point 20	44° 59.643' N	114° 25.532' W
Drop Point 21	45° 01.299' N	114° 18.752' W
Drop Point 22	45° 00.251' N	114° 20.034' W
Drop Point 23	44° 59.322' N	114° 25.238' W
Drop Point 24	44° 59.378' N	114° 20.701' W
Drop Point 25	44° 56.082' N	114° 20.414' W
Drop Point 26	44° 58.499' N	114° 21.308' W
Drop Point 27	45° 00.932' N	114° 23.263' W
Drop Point 28	44° 56.143' N	114° 22.568' W
Drop Point 29	45° 04.933' N	114° 03.291' W
Drop Point 30	44° 58.683' N	114° 22.937' W
Drop Point 31	45° 05.584' N	114° 05.243' W
Drop Point 32	45° 06.952' N	114° 07.874' W
Drop Point 33	45° 07.109' N	114° 09.512' W
Drop Point 34	45° 07.582' N	114° 12.937' W
Drop Point 35	45° 08.221' N	114° 13.012' W
Drop Point 36	45° 10.012' N	114° 09.709' W
Drop Point 37	44° 58.157' N	114° 18.877' W
Drop Point 38	44° 57.543' N	114° 17.599' W
Drop Point 39	44° 57.115' N	114° 16.330' W
Drop Point 40	44° 58.273' N	114° 10.339' W
Drop Point 41	44° 58.110' N	114° 15.493' W
Drop Point 42	44° 59.548' N	114° 08.418' W
Drop Point 43	45° 00.754' N	114° 05.458' W
Drop Point 44	45° 00.103' N	114° 33.074' W
Drop Point 45	44° 59.328' N	114° 33.166' W
Drop Point 46	44° 59.870' N	114° 33.624' W
Drop Point 47	45° 17.652' N	114° 21.146' W
Drop Point 48	45° 16.192' N	114° 20.099' W
Drop Point 49	45° 23.792' N	114° 13.399' W
Drop Point 50	45° 07.899' N	114° 21.525' W
Drop Point 51	45° 01.393' N	114° 18.740' W
Drop Point 52	45° 03.615' N	114° 05.454' W
Drop Point 53	44° 58.195' N	114° 11.869' W
Drop Point 54	44° 59.563' N	114° 08.398' W
Drop Point 55	45° 00.720' N	114° 05.764' W
Drop Point 56	44° 59.428' N	114° 29.289' W

***** TRAVEL TIME FROM ICP*****						
Name	LAT: DD° MM.MMMN	Travel Time (min)	ICP	Phone	Helipad	Level of Care
Complete Address	LONG: DD° MM.MMMW	Air	Ground		Yes/No	
Challis Area Health Center	44° 30.683' N	20 min	1.25 hrs	208.879.4351 After Hours: 208.879.1111	Yes	Community Health Center
Steele Memorial Medical Center	45° 10.416' N	NA	5 min	208.756.5655	Yes	Trauma Level 4
Providence St Patricks Hospital	46° 52.528' N	40 min	2.75 hrs	406.543.7271	Yes	Trauma Level 2
Eastern Idaho Regional Medical Center	43° 28.266' N	1 hr	2.75 hrs	208.227.2010	Yes	Trauma Level 2 Burn Center
St Luke's Magic Valley Medical Center	42° 35.466' N	1 hr	4 hrs	208.814.1440	Yes	Trauma Level 3

RED ROCK | ID-SCF-240202
 79,260 acres as of 10/24/24 at 2040 MDT

GARDEN | ID-SCF-240221
 13,036 acres as of 10/24/24 at 2032 MDT



- Airstrip or Airport
- Gate
- Road, Not Maintained for Passenger Car
- Helispot
- Bridge
- Contained
- Division Break
- Mobile Weather Unit
- Uncontained
- Medical
- Repeater
- Wildfire Daily Fire Perimeter
- Incident Command Post
- Hazard
- Private Land
- Drop Point
- Pump
- USFS Roadless Area
- Closure
- Water Tank
- Forest Service Land
- Camp
- Access Route
- Forest Service Wilderness
- Staging Area
- Paved Road
- State Lands
- Lookout
- Gravel Road
- Bureau of Land Management Lands
- Landmark
- Dirt (Not Paved)



1:115,000 | GB Team 7 | 10/25/2024 0141
 Acres from IR Acres from IR and Mixed Methods | NAD 1983 2011 Datum. | GCS (Latitude/Longitude) Grid