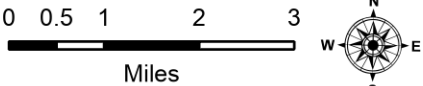


Silver King Pilot Map

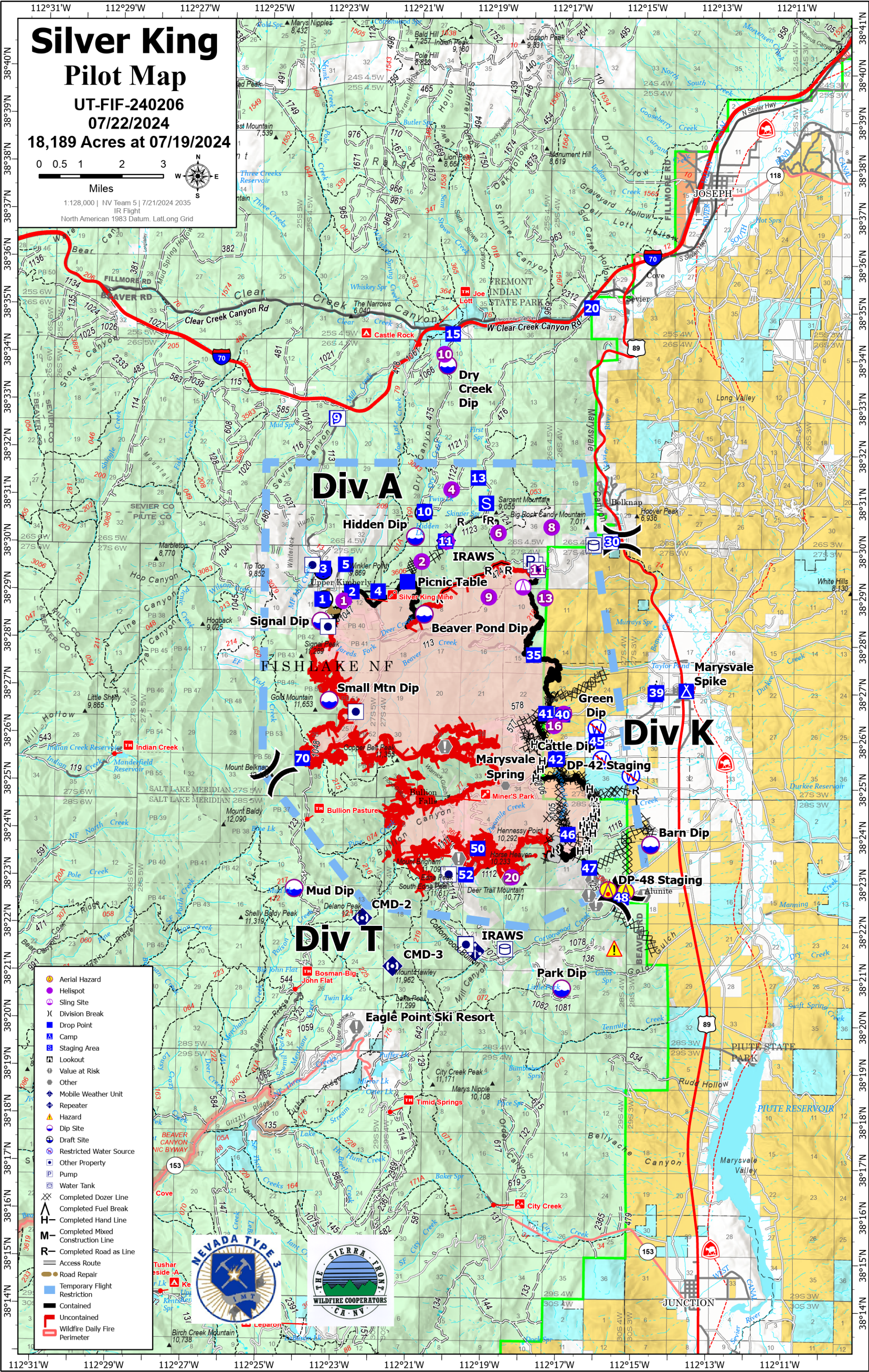
UT-FIF-240206

07/22/2024

18,189 Acres at 07/19/2024



1:128,000 | NV Team 5 | 7/21/2024 2035
IR Flight
North American 1983 Datum, LatLong Grid



- Aerial Hazard
- Helispot
- Sling Site
- Division Break
- Drop Point
- Camp
- Staging Area
- Lookout
- Value at Risk
- Other
- Mobile Weather Unit
- Repeater
- Hazard
- Dip Site
- Draft Site
- Restricted Water Source
- Other Property
- Pump
- Water Tank
- Completed Dozer Line
- Completed Fuel Break
- Completed Hand Line
- Completed Mixed Construction Line
- Completed Road as Line
- Access Route
- Road Repair
- Temporary Flight Restriction
- Contained
- Uncontained
- Wildfire Daily Fire Perimeter



Incident Name	FC Point Type	Label	Elevation (Feet)	Latitude WGS84 DDM	Longitude WGS84 DDM
Silver King	Aerial Hazard			38° 22.832' N	112° 15.742' W
Silver King	Aerial Hazard			38° 22.795' N	112° 15.269' W
Silver King	Camp	Marysvale Spike		38° 27.032' N	112° 13.722' W
Silver King	Dip Site	Small Mtn Dip	10335	38° 26.740' N	112° 23.261' W
Silver King	Dip Site	Beaver Pond Dip	8360	38° 28.574' N	112° 20.753' W
Silver King	Dip Site	Dry Creek Dip	6100	38° 33.810' N	112° 20.221' W
Silver King	Dip Site	Signal Dip	10230	38° 28.400' N	112° 23.511' W
Silver King	Dip Site	Barn Dip		38° 23.794' N	112° 14.624' W
Silver King	Dip Site	Hidden Dip		38° 30.200' N	112° 21.021' W
Silver King	Dip Site	Park Dip		38° 20.740' N	112° 16.944' W
Silver King	Dip Site	Mud Dip		38° 22.780' N	112° 24.120' W
Silver King	Draft Site			38° 29.455' N	112° 23.475' W
Silver King	Draft Site			38° 28.854' N	112° 23.440' W
Silver King	Draft Site			38° 30.707' N	112° 20.807' W
Silver King	Drop Point	3		38° 29.506' N	112° 23.466' W
Silver King	Drop Point	9		38° 32.669' N	112° 23.174' W
Silver King	Drop Point	5		38° 29.598' N	112° 22.873' W
Silver King	Drop Point	1		38° 28.861' N	112° 23.490' W
Silver King	Drop Point	45		38° 25.959' N	112° 16.104' W
Silver King	Drop Point	40		38° 26.505' N	112° 17.023' W
Silver King	Drop Point	15		38° 34.468' N	112° 20.093' W
Silver King	Drop Point	48		38° 22.675' N	112° 15.389' W
Silver King	Drop Point	47		38° 23.294' N	112° 16.249' W
Silver King	Drop Point	42		38° 25.564' N	112° 17.186' W
Silver King	Drop Point	30		38° 30.181' N	112° 15.565' W
Silver King	Drop Point	39		38° 26.993' N	112° 14.519' W
Silver King	Drop Point	4		38° 29.046' N	112° 21.995' W
Silver King	Drop Point	2		38° 29.028' N	112° 22.699' W
Silver King	Drop Point	41		38° 26.523' N	112° 17.465' W
Silver King	Drop Point	10		38° 30.730' N	112° 20.789' W
Silver King	Drop Point	13		38° 31.452' N	112° 19.359' W
Silver King	Drop Point	11		38° 30.113' N	112° 20.213' W
Silver King	Drop Point	20		38° 35.055' N	112° 16.388' W
Silver King	Drop Point	52		38° 23.117' N	112° 19.543' W
Silver King	Drop Point	50		38° 23.672' N	112° 19.237' W
Silver King	Drop Point	Picnic Table		38° 29.252' N	112° 21.215' W
Silver King	Drop Point	46		38° 23.991' N	112° 16.835' W
Silver King	Drop Point	35		38° 27.749' N	112° 17.816' W
Silver King	Drop Point	70		38° 25.512' N	112° 23.952' W
Silver King	Hazard			38° 21.603' N	112° 15.556' W
Silver King	Helibase			38° 44.608' N	112° 05.552' W
Silver King	Helispot	1		38° 28.833' N	112° 22.913' W
Silver King	Helispot	6		38° 30.304' N	112° 18.803' W
Silver King	Helispot	4		38° 31.200' N	112° 20.071' W
Silver King	Helispot	2		38° 29.680' N	112° 20.842' W
Silver King	Helispot	20	10000	38° 23.072' N	112° 18.321' W
Silver King	Helispot	8		38° 30.438' N	112° 17.382' W
Silver King	Helispot	3		38° 30.109' N	112° 20.186' W
Silver King	Helispot	16		38° 26.270' N	112° 17.240' W
Silver King	Helispot	15		38° 26.521' N	112° 16.987' W
Silver King	Helispot	10		38° 34.040' N	112° 20.310' W
Silver King	Helispot	9	8900	38° 28.951' N	112° 19.035' W
Silver King	Helispot	13		38° 28.948' N	112° 17.528' W
Silver King	Helispot	11	7200	38° 29.541' N	112° 17.730' W
Silver King	Incident Command Post			38° 45.729' N	112° 05.739' W
Silver King	Lookout			38° 28.283' N	112° 23.322' W
Silver King	Mobile Weather Unit	IRAWS		38° 30.129' N	112° 20.202' W
Silver King	Mobile Weather Unit	IRAWS	9150	38° 21.500' N	112° 19.267' W
Silver King	Other	Marysvale Spring		38° 25.000' N	112° 18.517' W
Silver King	Repeater	CMD-1		38° 32.534' N	112° 04.400' W
Silver King	Repeater	CMD-2		38° 22.170' N	112° 22.290' W
Silver King	Repeater	CMD-3		38° 21.167' N	112° 21.467' W
Silver King	Restricted Water Source	Cattle Dip	6485	38° 25.640' N	112° 16.041' W
Silver King	Restricted Water Source	Green Dip	6500	38° 26.230' N	112° 16.101' W
Silver King	Restricted Water Source			38° 25.240' N	112° 15.175' W
Silver King	Sling Site			38° 29.172' N	112° 18.124' W
Silver King	Staging Area	DP-42 Staging		38° 25.616' N	112° 17.143' W
Silver King	Staging Area	DP-48 Staging		38° 22.789' N	112° 15.622' W
Silver King	Staging Area			38° 30.922' N	112° 19.133' W
Silver King	Staging Area			38° 26.957' N	112° 14.551' W