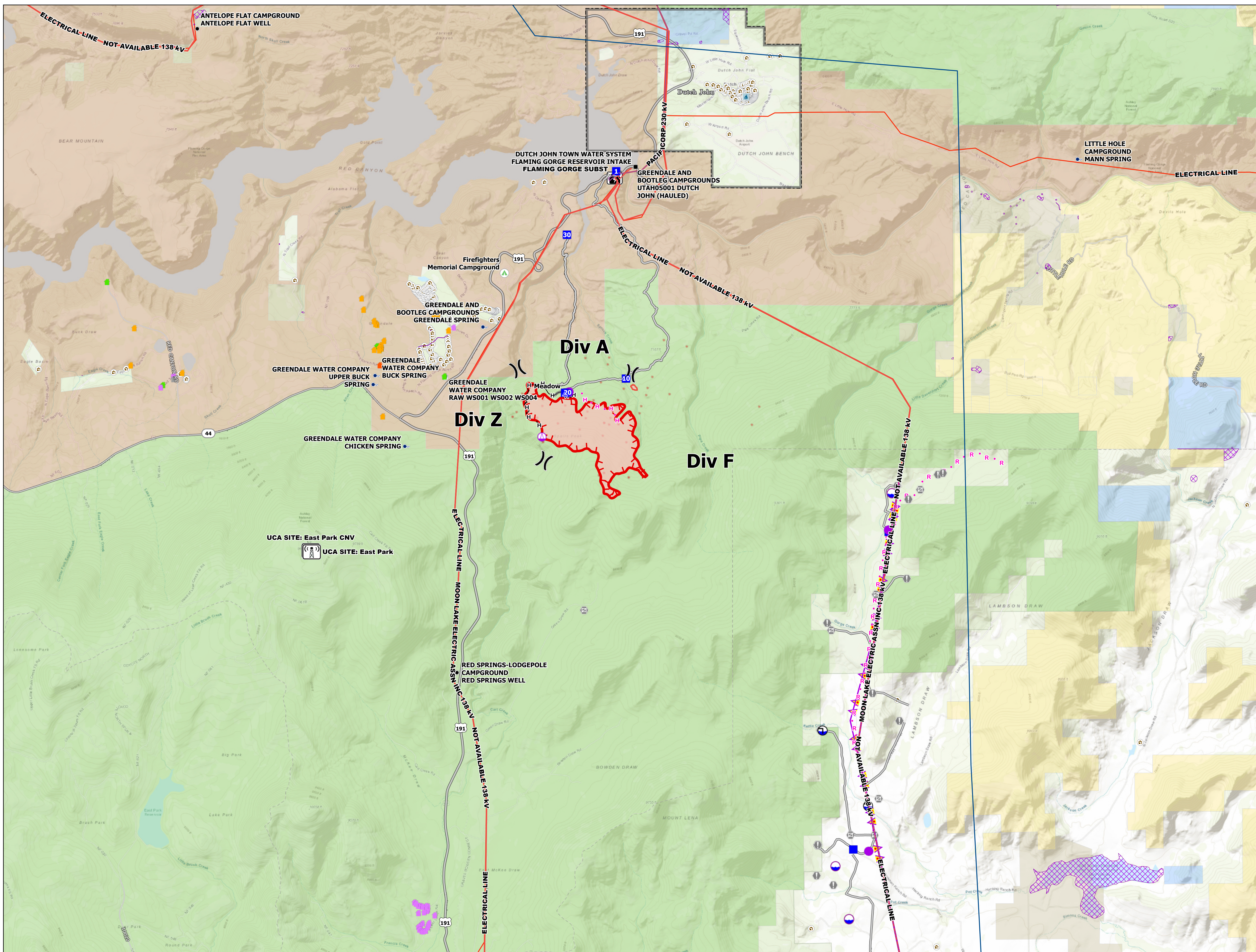
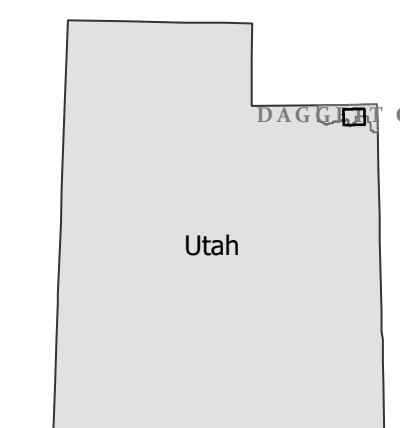
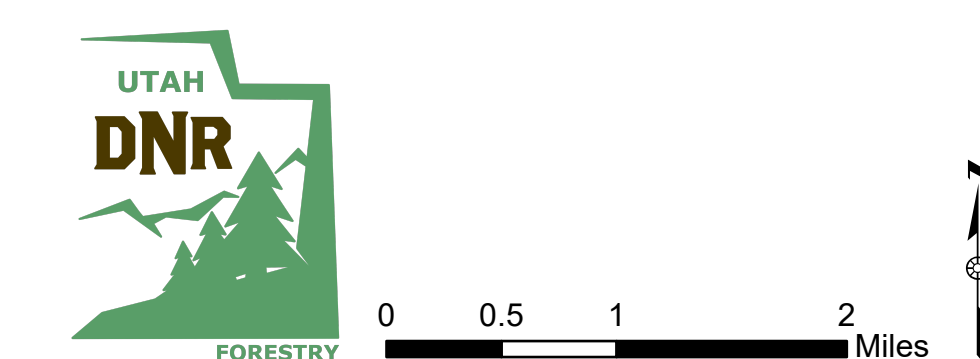


# Critical Infrastructure Speirs Fire UT-ASF-100141 07/16/2024

713 acres at 07/15/2024



- 0-9 (Hot Spot MW)
  - Helispot
  - Sling Site
  - ⎓ Division Break
  - Drop Point
  - Ⓜ Camp
  - ⚠ Value at Risk
  - Ⓜ Gate
  - Ⓜ Dip Site
  - Ⓜ Draft Site
  - H Completed Hand Line
  - P Planned Hand Line
  - R Planned Road as Line
  - Access Route
  - Aerial Hazard
  - Uncontaminated
  - Wildfire Daily Fire Perimeter
  - Defensible - Stand Alone
  - Defensible - Prep and Hold
  - Non-Defensible - Prep and Leave
  - Non-Defensible - Rescue Drive-By
  - Unknown
- Intake
  - Non-Piped, Purchased
  - Spring
  - Well
  - Ⓜ Communications Sites
  - Ⓜ Electric Substations
  - Ⓜ Natural Gas Processing Plant
  - Ⓜ Electric Transmission Lines
  - Gathering
  - Interstate
  - Intrastate
  - Ⓜ Municipal Boundaries
  - Ⓜ Utah Boundary
  - US Highways Undivided
  - State Highways Major
  - Major Local
  - Ⓜ Address Points
  - Ⓜ Custom Campgrounds
  - Bureau of Land Management
  - National Recreation Area
  - National Forest
  - Private
  - State Trust Lands
  - State Wildlife Reserve/Management Area



## FOR OFFICIAL USE ONLY

Data Sources:  
 The Utah Division of Emergency Management  
 Utah Communications Authority  
 Utah Division of Drinking Water  
 PacifiCorp (Rocky Mountain Power)  
 Dominion Energy (formerly Questar Gas)  
 National Pipeline Mapping System  
 U.S. Department of Homeland Security, HIFLD Open Data  
 U.S. Department of Homeland Security, HIFLD Secure Data  
 Utah Geographic Reference Center  
 National Interagency Fire Center

Map Produced By:  
 Utah Division of Forestry, Fire and State Lands