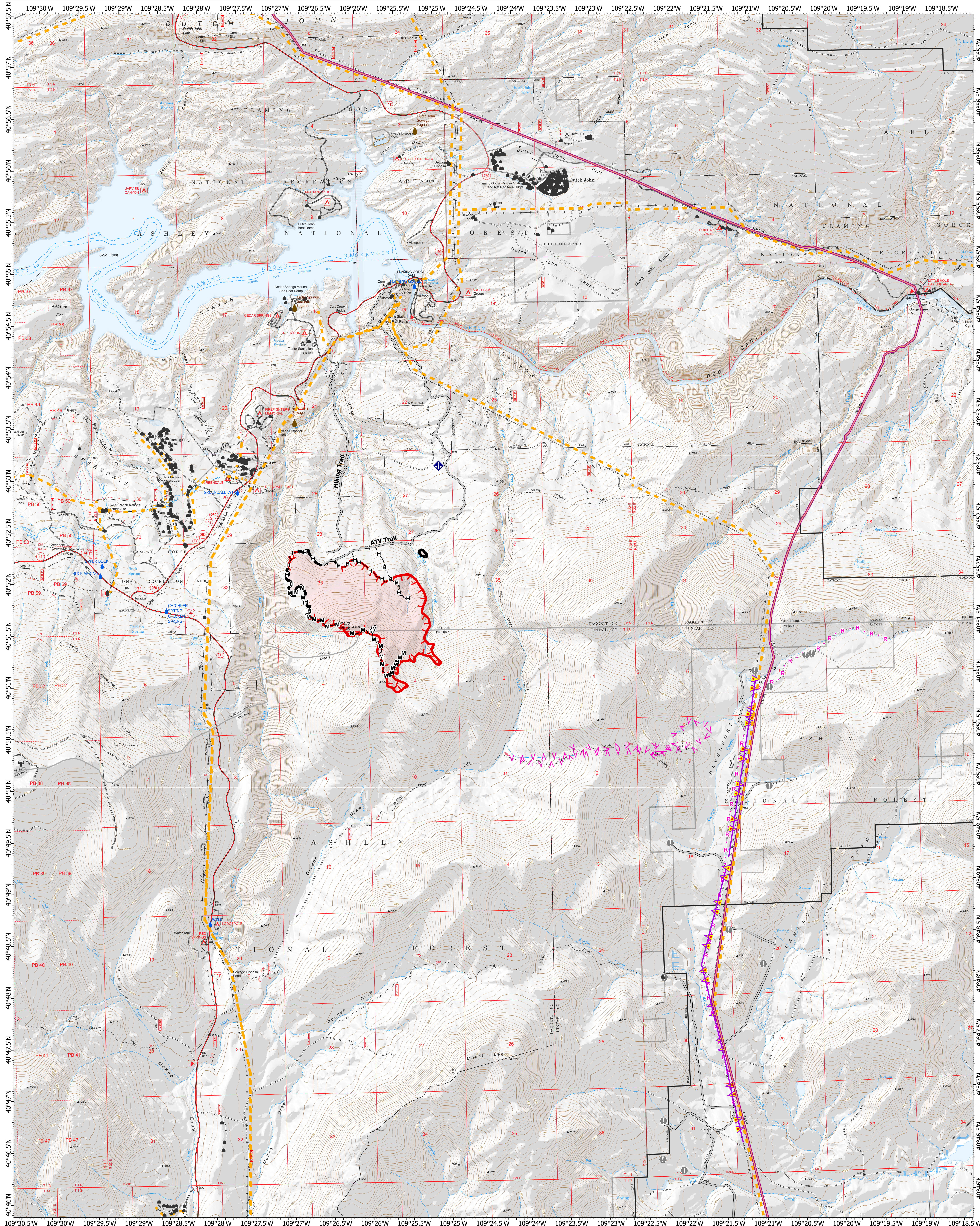


Infrastructure & Values at Risk

Speirs



0 0.35 0.7 1.05 1.4
Miles
Area as of 07/19/2024, 1800 Hrs

- ▲ Structures
- ▲ Uintah Basin Raws
- H— Completed Hand Line
- M— Completed Mixed Construction Line
- ▲ Drinking Water Sources
- ▲ Electrical Lines
- ▲ Planned Fuel Break
- ▲ V Planned Road as Line
- ▲ Sewage Treatment
- Oil/Gas Pipelines
- ▲ Aerial Hazard
- ▲ Communication Sites
- ▲ Value at Risk
- Access Route (No Vehicles)
- Contained
- Uncontained
- Fire Perimeter

