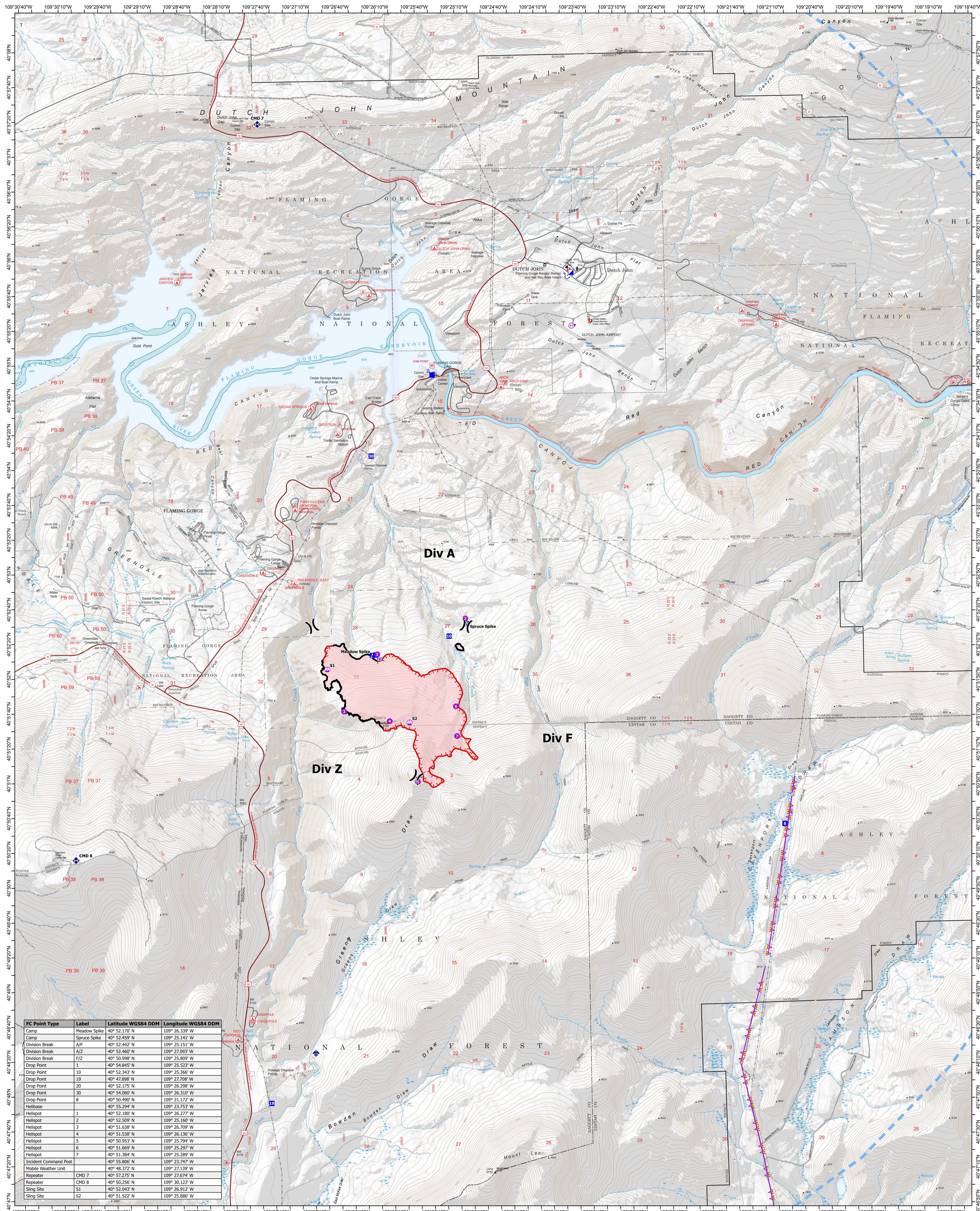


# Air Operations

# Speirs



FC Point Type	Label	Latitude WGS84 DDM	Longitude WGS84 DDM
Camp	Meadow Spike	40° 52.170' N	109° 26.339' W
Camp	Spruce Spike	40° 52.459' N	109° 25.141' W
Division Break	A/F	40° 52.442' N	109° 25.151' W
Division Break	F/Z	40° 52.460' N	109° 27.093' W
Drop Point	1	40° 54.845' N	109° 25.523' W
Drop Point	10	40° 52.343' N	109° 25.366' W
Drop Point	19	40° 47.898' N	109° 27.708' W
Drop Point	20	40° 52.175' N	109° 26.298' W
Drop Point	30	40° 54.080' N	109° 26.310' W
Drop Point	8	40° 50.499' N	109° 21.172' W
Helibase		40° 55.294' N	109° 23.753' W
Helispot	1	40° 52.180' N	109° 26.277' W
Helispot	2	40° 52.509' N	109° 25.160' W
Helispot	3	40° 51.638' N	109° 26.709' W
Helispot	4	40° 51.538' N	109° 26.136' W
Helispot	5	40° 50.953' N	109° 25.794' W
Helispot	6	40° 51.669' N	109° 25.297' W
Helispot	7	40° 51.384' N	109° 25.289' W
Incident Command Post		40° 55.806' N	109° 23.747' W
Mobile Weather Unit		40° 48.372' N	109° 23.139' W
Repeater	CMD 7	40° 57.275' N	109° 22.674' W
Repeater	CMD 8	40° 50.256' N	109° 30.123' W
Sling Site	S1	40° 52.043' N	109° 26.912' W
Sling Site	S2	40° 51.522' N	109° 25.886' W



- Division Break
- Incident Command Post
- Drop Point
- Camp
- Helispot
- Helibase
- Sling Site
- Mobile Weather Unit
- Repeater
- Aerial Hazard
- Temporary Flight Restriction
- Fire Perimeter

