

INCIDENT ACTION PLAN

VALLEY FIRE INCIDENT

ID-SWS-001367

Tuesday

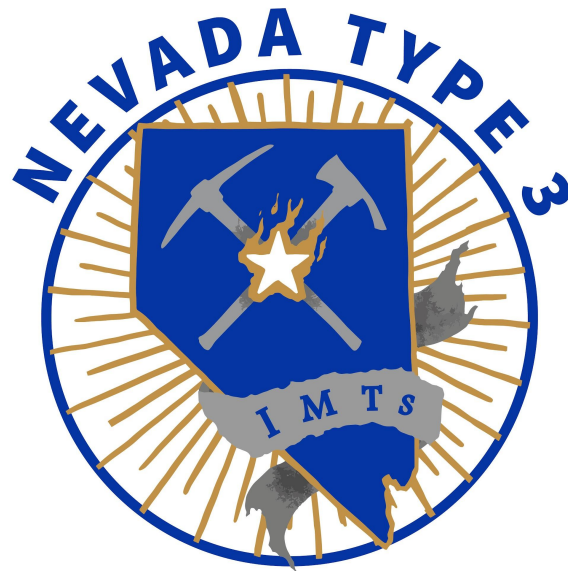


Photo Credit: NVT2T3

OPERATIONAL PERIOD



10/15/2024 0700
to
10/15/2024 2000

IDZ421-141500- Mon Oct 14 2024

.DISCUSSION...

Tuesday will be the final day of the current stretch of dry and warm weather. A cold front on Wednesday will bring widespread rainfall with a 60-90% chance of a wetting rain across the mountains. The chance for showers will continue through Thursday evening as snow levels drop to around 5000 feet. Accumulating snow is likely above 6000 feet on Thursday with 1 to 4 inches expected. Most mountain sites will see 0.25-0.50 inches through Thursday evening with 0.10 to 0.25 inches of rain in the valleys.

.TUESDAY...

Sky/weather.....Sunny.

Max temperature.....71 to 80, except 62 to 70 above 6500 feet.

24 hr trend.....On average, unchanged.

Min humidity.....15 to 21 percent.

24 hr trend.....On average, 2 percent drier.

20-foot winds.....

Valleys/lwr slopes...Light upslope winds less than 8 mph in the morning, becoming south 8 to 12 mph in the afternoon.

Ridges/upr slopes....Light winds less than 8 mph in the morning, becoming south 8 to 13 mph in the afternoon.

Haines Index.....3 very low.

LAL.....1.

CWR /0.10 inch/.....0 percent.

Smoke Dispersal:

Mixing Height.....5000-7000 ft AGL.

Transport Winds....South 10 to 20 mph.

.TUESDAY NIGHT...

Sky/weather.....Mostly clear.

Min temperature.....38 to 49.

24 hr trend.....On average, unchanged.

Max humidity.....41 to 61 percent.

24 hr trend.....On average, 3 percent wetter.

20-foot winds.....

Valleys/lwr slopes...Southeast around 8 mph in the evening, becoming light downslope less than 8 mph after midnight.

Ridges/upr slopes....Southeast around 8 mph.

Haines Index.....4 low.

LAL.....1.

CWR /0.10 inch/.....0 percent.

Smoke Dispersal:

Mixing Height.....100-200 ft AGL.

Transport Winds....South 5 to 10 mph.

ORGANIZATION ASSIGNMENT LIST (ICS 203)

1. Incident Name: Valley Fire		2. Operational Period: Date From: 10/15/2024 Time From: 0700		Date To: 10/15/2024 Time To: 2000	
3. Incident Commander(s) and Command Staff:			7. Operation Section:		
IC/UC's	Justin Bedard	Operations	Jay Bertek		
Deputy IC		Planning Ops	Joe Livreri		
Safety Officer	Todd DeMasters	Night Ops			
Information Officer	Robbie Johnson	Staging Area			
Liaison Officer		Branch	I		
4. Agency/Organization Representatives:		Division/Group	A/W/Z	Tolo Martinez	
Agency/Organization	Name	Division/Group			
Idaho Dept Lands	Dave Schwartz	Division/Group	XRAY	Robert Picazo/Jerry Hart(t)	
BLM AA	Ammon Wilhelm	Division/Group	ZULU		
USFS AA	Adriene Holcomb	Division/Group			
		Branch	II		
		Division/Group			
		Division/Group			
		Division/Group			
		Division/Group			
		Branch	III		
		Division/Group			
		Division/Group			
		Division/Group			
		Division/Group			
		Branch	IV		
		Division/Group			
5. Planning Section:		Division/Group			
Chief	Robert Washburn	Division/Group			
Deputy	Justin T Saiz	Division/Group			
Resource Unit		Division/Group			
Situation Unit		Branch	V		
Documentation Unit		Division/Group			
Demobilization Unit		Division/Group			
SCKN	Jimmie Carter	Division/Group			
GISS	Audrey Sauvey	Division/Group			
FBAN		Division/Group			
IMET		Air Operations Branch		Director:	
Training Tech Spec		Air Support Group Supervisor			
		Air Tactical Group Supervisor			
6. Logistics Section		Helibase Manager		Jeremy Schwandt	
Chief	Shannon Sanders				
Deputy	Joseph Smith	8. Finance/Administration Section:			
Supply Unit		Chief	Sierra Brewer / Janice Minarik		
Facilities Unit		Deputy	Alexis Mann (t)		
Base Camp Manager	Brianna Mitrone	Time Unit	Lori Cottee		
Communications Unit		Procurement Unit			
Medical Unit	Anthony Skude / Kaitlin McKelvey (t)	Comp/Claims Unit			
		Cost Unit			
Prepared By: Name: Robert Washburn		Position/Title: PSC		Signature: _____	
ICS 203		Date/Time: 10/14/2024 2300 hours		<small>NIMS IAP</small>	

ASSIGNMENT LIST (ICS 204 WF)

CONTROLLED UNCLASSIFIED
INFORMATION//BASIC

1. Incident Name:	2. Operational Period:	3. Branch	Division
Valley Fire	Date From: 10/15/24 Date To: 10/15/24 Time From: 0700 Time To: 2000	I	AWIZ
4. Operations Personnel:		Page 1 of 1	

Operations Section Chief: Jay Bertek	Night Ops:
Branch Director:	Branch Safety:
Division/Group Supervisor: Tolo Martinez	Air Attack:

5. Resources Assigned: **** Resources Below in Bold are 12 Hour ****

Resource Identifier	ALS	LWD	Leader	Personnel	Request #	Hours	Reporting Location
CR2I - GRAYBACK IRAC #2		10/20	EDDIE LORD	20	C-9	0700-2000	
ENG6 - FIRE CONTROL RESOURC		10/21	BRETT PARTRIDGE	3	E-19	0700-2000	
ENG5 - KVS - E2151		10/21	JASMINE CHOWNING	4	E-26	0700-2000	
ENG6 - TRI-STATE FIRE		10/21	ISAIAH RUYBAL	3	E-25	0700-2000	
ENG6 - AXCESS FIRE		10/21	SHANE SEXTON	3	E-22	0700-2000	
*ENG5 - CLEARWATER FIRE		10/21	PAUL SCHULTZ	3	E-24	0700-2000	
*ENG6 - ROCK CREEK		10/21	RYAN MITCHELL	3	E-20	0700-2000	
ENG6 - MAZWELL		10/24	JOBE RATCLIFF	2	E-46	0700-2000	
MBM2 - JEFFERY MILLER EXCAVA		10/20	TAD BRADSHAW	2	E-27	0700-2000	
MBM2 - SMOKY MOUNTAIN EXCAV		10/20	TERI TOMLINSON	2	E-28	0700-2000	
EXC2 - JEFFERY MILLER EXCAVA		10/27	KALAH	2	E-61	0700-2000	
EXC2 - ROWBERRY TRUCKING LL		10/27	CALEB ROWBERRY	2	E-62	0700-2000	
EXC3 - JDB3 LLC - 61618		10/27	WES DODGE	2	E-63	0700-2000	
EMT1	YES	10/22	BERTOVIICH ANDREW	1	O-20	0700-2000	
MEDIC 1	YES	10/25	BEN FLORES	1	O-25	0700-2000	

6. Work Assignments:
 Maintain patrol status within the burn area. Continue to secure fires edge
 Hold and improve control lines to minimize chance of possible fire growth
 Suppression Repair refer to turn back standards

7. Special Instructions:
 Pull back Dozer berms and scatter brush

8. Communications

Name	Ch	Function	Rx Freq	Rx Tone	Tx Freq	Tx Tone	Mode	Notes
COMMAND 8	8	COMMAND	173.1750	(T12) 127.3	165.9875	(T12) 127.3	A	
TAC 1	1	TACTICAL	168.0500	(T12) 127.3	168.0500	(T12) 127.3	A	
A/G PRIMARY	11	A/G TAC	168.9625		168.9625		A	
ST COMM	15	EMERGENCY	155.2800		155.2800	(T6) 156.7	A	
AIRGUARD	16	EMERGENCY	168.6250	0.0	168.6250	(T1) 110.9	A	

9. Prepared by: Name: Robert Washburn PSC Signature: _____

ICS 204 Date/Time: 10/14/2024 2200 Personnel Count: 53

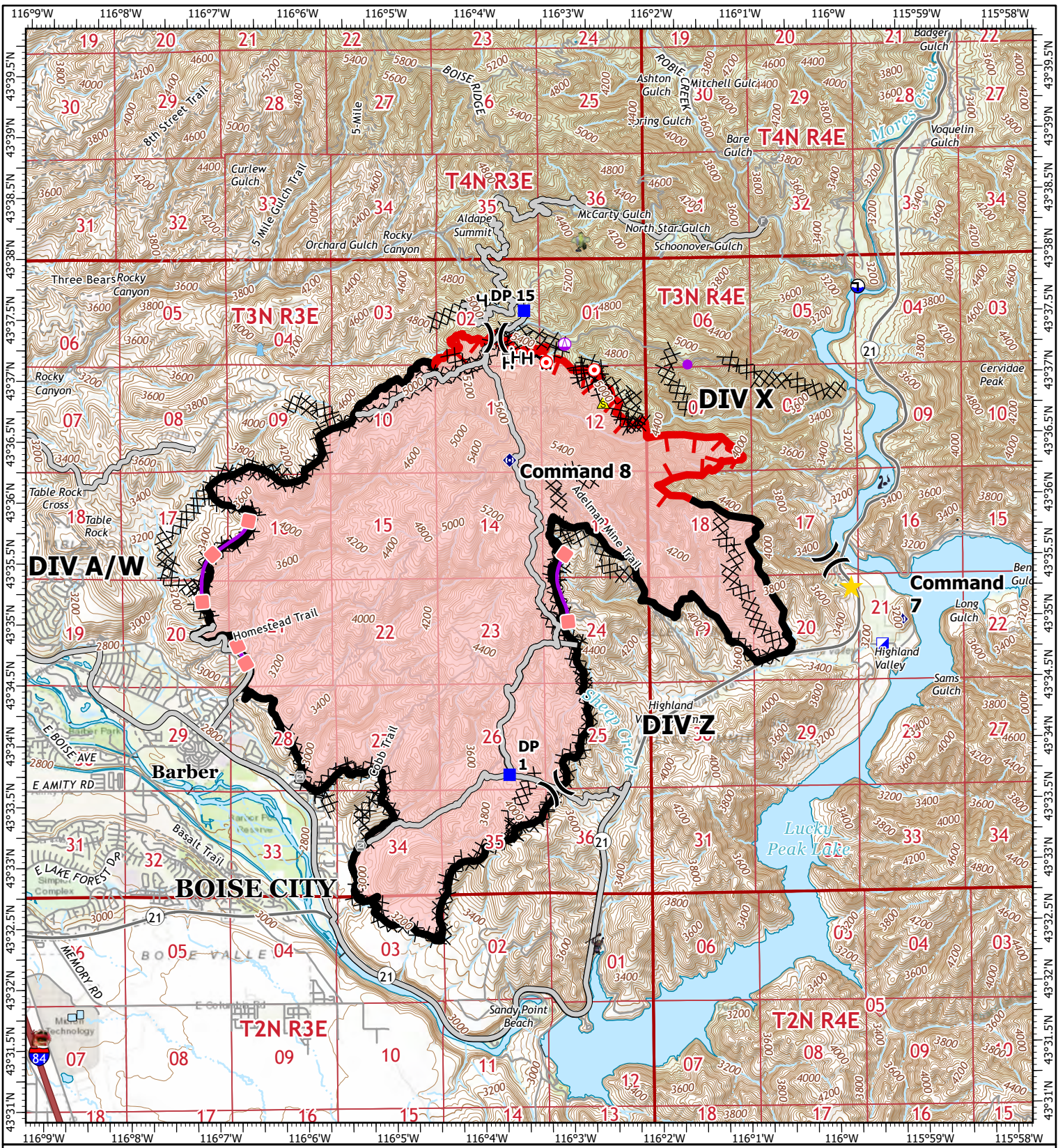
ICS 205 - INCIDENT RADIO COMMUNICATIONS PLAN

CONTROLLED UNCLASSIFIED
INFORMATION/BASIC

1. Incident Name: Valley Fire Incident Channels		2. Date/Time Prepared Date: 10/14/2024 Time: 1930		3. Operational Period: Date From: 10/15/24 Time From: 0700				Date To: 10/15/24 Time To: 2000	
4. Communications									
Ch#	Function	Name	Assigned To	Rx Freq	Rx Tone	Tx Freq	Tx Tone	Mode	Notes
1	TACTICAL	TAC 1	DIV A/W/Z	168.0500	(T12) 127.3	168.0500	(T12) 127.3	A	
2	TACTICAL	TAC 2		168.2000	(T12) 127.3	168.2000	(T12) 127.3	A	
3	TACTICAL	TAC 3	DIV XRAY	168.6000	(T12) 127.3	168.6000	(T12) 127.3	A	
4	TACTICAL	TAC 4	DIV ZULU	166.7250	(T12) 127.3	166.7250	(T12) 127.3	A	
5									
6									
7	COMMAND	COMMAND 7	ALL DIVS	171.1000	(T12) 127.3	162.1875	(T12) 127.3	A	
8	COMMAND	COMMAND 8	ALL DIVS	173.1750	(T12) 127.3	165.9875	(T12) 127.3	A	
9	COMMAND	SHAFFER		159.4650		151.2150	(T2) 123.0	A	
10	COMMAND	LUCKY PEAK		168.4250		163.1250	(T30) 179.9	A	
11	A/G TAC	A/G PRIMARY	ALL DIVS	168.9625		168.9625		A	
12	A/G TAC	A/G SECONDAF		169.4500		169.4500		A	
13	A/G TAC	IDLA/G		151.4500		151.4500		A	
14									
15	EMERGENCY	ST COMM	ALL DIVS	155.2800		155.2800	(T6) 156.7	A	
16	EMERGENCY	AIRGUARD	ALL DIVS	168.6250	0.0	168.6250	(T1) 110.9	A	
17									
18									
19									
20									
5. Special Instructions									

AIR OPERATIONS SUMMARY (ICS 220)

1. Incident Name:		2. Operational Period: Date From: _____ Date To: _____ Time From: _____ Time To: _____				3. Sunrise: _____ Sunset: _____	
4. Remarks (safety notes, hazards, air operations special equipment, etc.):			5. Ready Alert Aircraft: Medivac: _____ New Incident: _____			6. Temporary Flight Restriction Number: Altitude: _____ Center Point: _____	
			8. Frequencies:		AM	FM	9. Fixed-Wing (category/kind/type, make/model, N#, base):
			Air/Air Fixed-Wing				
7. Personnel:	Name:	Phone Number:	Air/Air Rotary-Wing – Flight Following				
Air Operations Branch Director			Air/Ground				
Air Support Group Supervisor			Command			Other Fixed-Wing Aircraft:	
Air Tactical Group Supervisor			Deck Coordinator				
Helicopter Coordinator			Take-Off & Landing Coordinator				
Helibase Manager			Air Guard				
10. Helicopters (use additional sheets as necessary):							
FAA N#	Category/Kind/Type	Make/Model	Base	Available	Start	Remarks	
11. Prepared by: Name: _____ Position/Title: _____ Signature: _____							
ICS 220, Page 1			Date/Time: _____				



IAP
 Valley Fire
 ID-SWS-001367
 10/15/24
 9904 acres at 10/10/24 @ 2250hrs

1:80,000 | 10/14/2024 1407
 Acres from IR and GPS
 North American 1983 Datum, LatLong Grid

- ★ Weed Wash
- Fire Station
- ▬ Contained
- - - Trail
- Helispot
- ⬠ Repeater
- ▬ Uncontained
- - - Pipeline
- Sling Site
- ▲ Safety Zone
- ▬ Wildfire Daily Fire Perimeter
- - - Perennial Stream
-) Division Break
- ⊕ Draft Site
- ▬ Expressway
- - - Canal/Ditch
- Incident Command Post
- ⊗ Completed Dozer Line
- ▬ Local Connector
- - - Underground Pipeline
- Drop Point
- ▬ Completed Hand Line
- ▬ Local Road
- - - Intermittent Stream
- Hot Spot - Spot Fire
- ▬ Access Route
- ▬ Ramp
- ▬ Township/Range
- Gate
- ▬ Retardant Drop
- ▬ Section

** Find the 5 monsters hidden in the map **



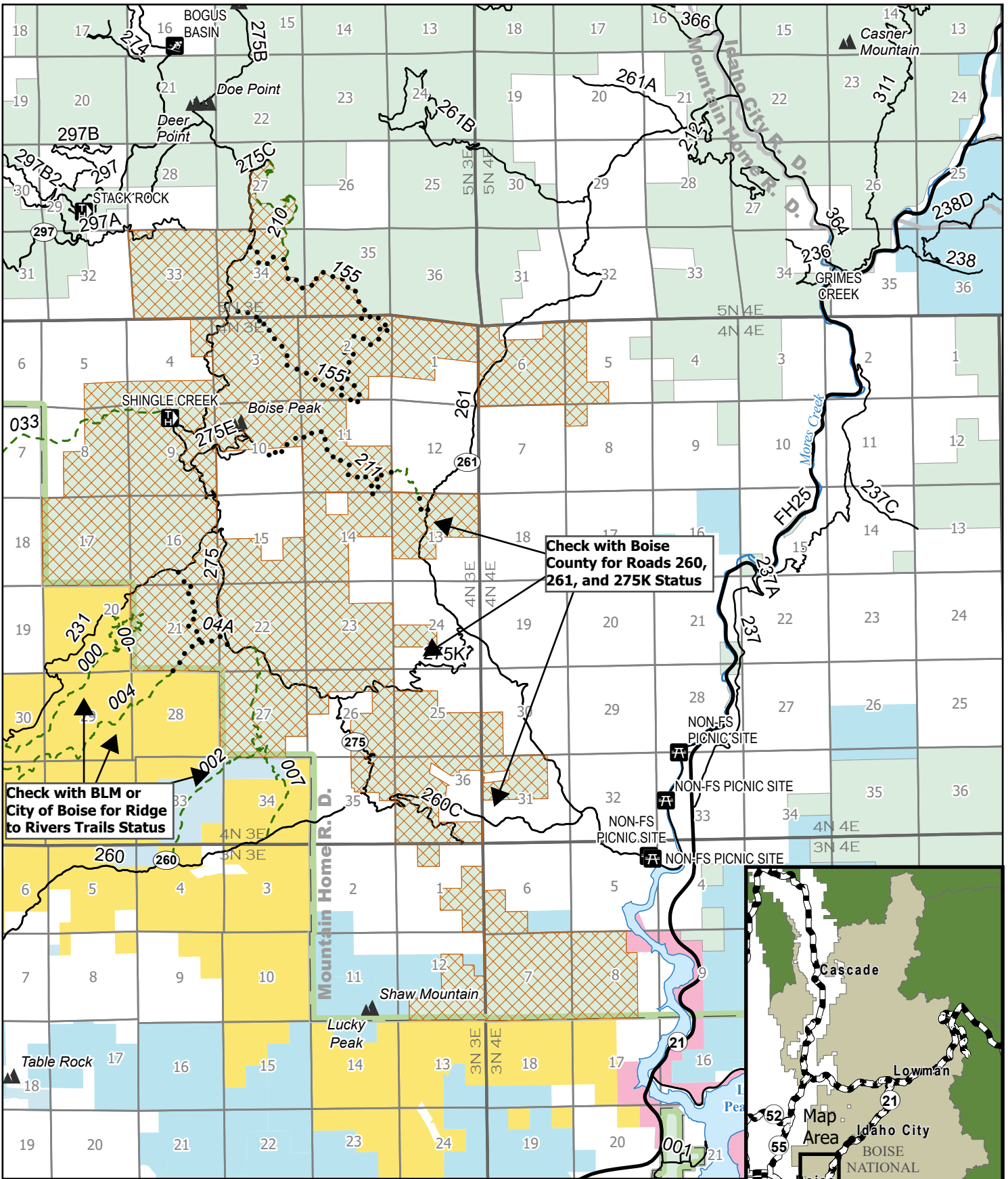
Boise National Forest

Mountain Home Ranger District

Valley Fire Closure

Order Number - 0402-01-109

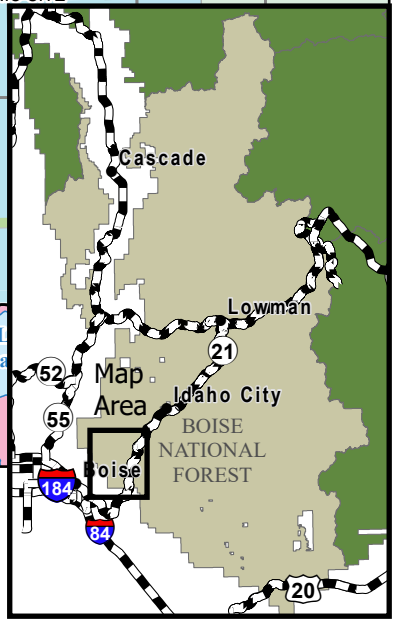
The U.S. Department of Agriculture, Forest Service uses the most current and complete data available. GIS data and product accuracy may vary. They may be developed from sources of differing accuracy, accurate only at certain scales, based on modeling or interpretation, incomplete while being revised or created, etc. Using GIS products for purposes other than those for which they were created, may yield inaccurate or misleading results.



Described Area	Roads	FS Ownership	BLM
Boating Site	Motorized Trail	Forest Boundary	USACE
Picnic Site	Non-Motorized Trail		State
Ski Area Alpine	Summits		Other Federal
Trailhead			City/County

0 0.5 1 2 Miles

N

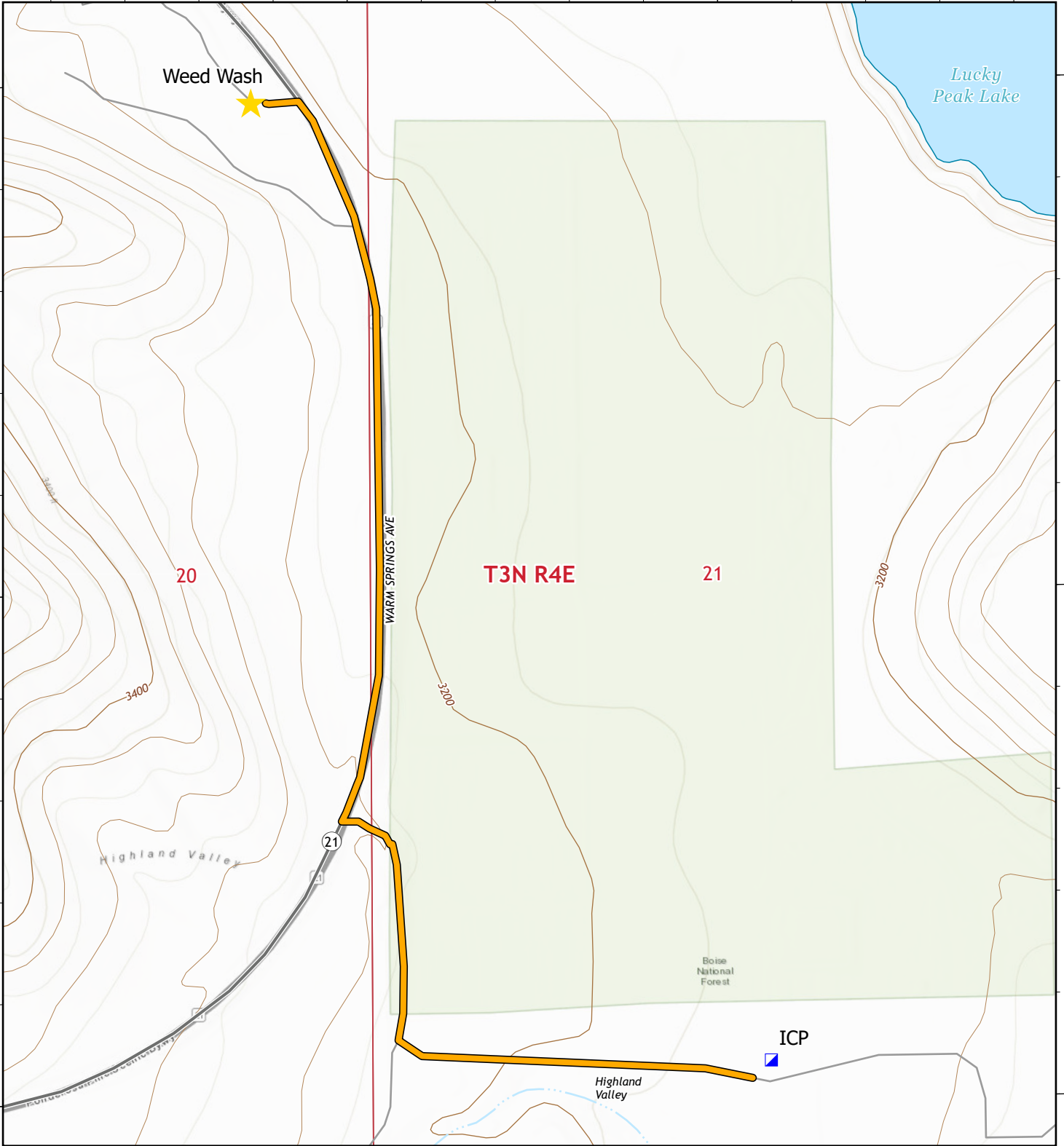


115°59.5'W

43°35'N

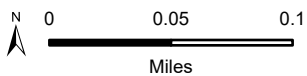
43°35'N

115°59.5'W











Weed Wash

Hours of Operation:
0800 - 1200
1200 - 1900



1:5,000 | 10/12/2024 1252
Acres from IR and GPS
North American 1983 Datum, LatLong Grid

-  Weed Wash
-  Incident Command Post
-  Route to Weed Wash
-  Local Connector
-  Local Road
-  Intermittent Stream
-  Township/Range
-  Section

Nevada Team 2 Type 3 Team Contact Roster			
Position	Name	Cell	Email
IC	Justin Bedard	702-357-0898	justin.bedard@usda.gov
Safety	Todd Demasters	208-830-6283	todd.demasters@usda.gov
Medical Unit Leader	Anthony Skude	720-633-3225	anthony_skube@firenet.gov
MEDL(T)	Kaitlin McKelvey	702-858-7120	Kaitlin.jmmh@gmail.com
Operations	Jay Bertek	951-805-9362	jaybertek@gmail.com
Ops Planning	Joseph Livreri	775-293-5902	jlivreri@forestry.nv.gov
Plans	Robert Washburn	775-962-1552	dyna1017@gmail.com
GISS	Audrey Sauvey	714-624-1061	asauvey@blm.gov
Logistics	Shannon Sanders	775-397-1285	shannon3214@yahoo.com
Logistics	Joseph Smith	702-879-2668	Joseph_smith@firenet.gov
Finance	Sierra Brewer	775-870-6268	sabrewer@blm.gov
FSC3(T)	Alexis Mann	775-421-0968	amann@blm.gov

Finance Reminders

CTRs

- Total your daily hours and circle them on your CTR
- Document your CTR when Operations determines you are not able to take a lunch break
- When recording hazard pay, show the category of hazardous exposure (e.g., firefighting, hover hookup) on your CTR
- List all crewmembers on your CTR
- Write/sign legibly
- Keep your time current

CREW TIME REPORT							
1) CREW NAME Operations				2) CREW NUMBER 0-52			
3) OFFICE RESPONSIBLE FOR/ BY Caribou-Yarghee		4) FIRE NAME Tie		5) FIRE NUMBER 10-CIF-00318			
6) HOURS	7) NAME OF EMPLOYEE	8) CLASSIFICATION	9) DATE 8/28		10) DATE		
			11) ON	12) OFF	13) ON	14) OFF	
	H Tom Smith		0600	2100			
					(16)		
15) REMARKS							
Unable to take meal break due to active fire in DIV B							
Hazard - Fire fighting on uncontrolled fireline							
16) OPERATOR SIGNATURE John Barnes				17) TITLE (Owner-in-Chief) DIVS			
18) NAME (Position, Position, Emergency, Title, Dept)				19) DATE			

EMERGENCY EQUIPMENT SHIFT TICKET				E-20
1. INCIDENT NUMBER AG-07NV-B-16-7777		2. CONTRACTOR NAME Jones Equipment		
3. INCIDENT LOCATION Lost Creek		4. INCIDENT NUMBER 10-CIF-003117		
5. EQUIPMENT MAKE Caterpillar		6. EQUIPMENT MODEL Dozer, DoC		
7. SERIAL NUMBER 47A99876		8. INCIDENT NUMBER		
9. OPERATOR(S) Paul Jones / Randy Smith		10. OPERATOR(S) SIGNATURE(S)		
11. DATE 7/14/16		12. TIME 1230 2030		
13. HOURS 6.0		14. SPECIAL NOTES 2 operators Transport retained by incident		
15. OPERATOR(S) SIGNATURE(S) Paul Jones		16. DISPATCHER(S) SIGNATURE(S) Rich Brown		
17. DISPATCHER(S) SIGNATURE(S) 7/16/16		18. TIME SHOWN		

- Make sure resource order number is listed on the shift ticket.
- Fill out shift ticket completely and legibly.
- Ensure signatures are legible.
- Document names of all operators.
- Document daily if transport is being kept by the incident
- Include all shift hours and show a lunch break or documentation for a compensable lunch break – even if equipment is on a daily rate
- Keep your time current

Please submit **daily** CTRs and Equipment Shift Tickets electronically through the email address below.

2024.valley.finance@firenet.gov

If you have any possible **CLAIMS**, DO NOT wait until last minute. Please get them into Finance early as possible. Use email above to request forms or submit.

THANK YOU FROM FINANCE
ANY QUESTIONS, GIVE US A TEXT OR CALL.

928.607.6546 or 775.870.6268





2024 Valley Fire

Please use this QR code to upload fire-related photos and videos for public information, social media, news media, InciWeb, and for the IAP. Please refrain from posting incident-related videos/photos to your personal social media.

Please take photos/videos only when it is safe to do so. Be sure people in photos are wearing proper protective gear. It may be unsafe to shoot photos or video. A crew member who is concentrating on a camera may lose their situational awareness.



For assistance with media or public inquires

Contact Robbie Johnson, PIO, Nevada Team 2

208-908-1786

rjohnson@idl.idaho.gov



SAFETY MESSAGE

ALWAYS MAINTAIN LCES!!!



Fire fighter safety comes first on every fire, every time

MAJOR HAZARDS AND RISKS	
<ul style="list-style-type: none"> Extreme fire behavior Dehydration—Drink lots of water Possible Fast moving fire Pedestrians on roads Urban interface 	<ul style="list-style-type: none"> Driving—Heads up on Hwy 21 !!!!! Be aware for public making sudden stops on roads! Steep rocky, rough terrain--falls/slips Bear country Strong gusty winds



Safety Spotlight:

All-Terrain Vehicles:

The operation of ATV/UTVs can be high risk. The use of ATV/UTVs should be evaluated to ensure the use is essential to accomplish the mission, rather than for convenience. All personnel authorized to operate an ATV/UTV must first complete agency specific training in safe operating procedures and wear appropriate PPE.

1. STOP	2. THINK
3. TALK ..	4. THEN ACT
Think Safety First Build a culture that places the health and welfare of people first	
Identify Hazards It is our responsibility to recognize hazards and do our best to mitigate them	
Access your Exposure to Risk Periodic assessment of your risk and the situation you're responsible for is paramount to ensure success	
Maintain Situational Awareness Be vigilant and remember you are the most important resource	
<p>Everything we do in the Forest Service involves some level of risk. From driving to work, to every job we do in the agency – we encounter hazards. In some cases we accept this when we come to work every day, but we do not accept the loss or injury of any of our co-workers, volunteers, partners or youth groups. Although we can never know every hazard that we may face in a day, nor can we eliminate all risk, we can mitigate certain hazards, not take unnecessary risks, and train and prepare for the risks we may encounter.</p> <p style="text-align: right; font-size: small;">~ Leanne Marten Rocky Mountain Region Regional Forester</p>	

MEDICAL PLAN (ICS 206 WF)

1. Incident/Project Name		2. Operational Period					
Valley Fire		10/15/2024 0700-2000					
3. Ground Evacuation							
Name	Complete Address	Phone/Frequency			ALS		
Ada County Paramedics	370 Benjamin Lane, Boise, ID 83704	911 or 208-377-6790			Yes		
East Boise Co. Ambulance	204 Commercial St. Idaho City, ID 83631	911 or 208-392-4411			No		
4. Air Evacuation							
Name	Phone / Frequency	Capabilities					
Air Methods	Dispatch/911 800-247-4324 (Direct)	Critical Care Team, Paramedic, RN, Blood, TXA, Night Vision					
Life Flight Network	Dispatch/911 800-232-0911 (Direct)	Critical Care Team, Paramedic, RN, Blood, TXA, Night Vision					
5. Clinic/Hospitals							
Name and Address	Ground	Air	Phone	Heli	Burn	Level	
Saint Alphonsus Regional Medical Center 1055 N Curtis Rd, Boise, ID Lat: 43° 36.828' N Long: 116° 15.338' W	1 hr. & 10 min	10 min	208-367-3223	Yes	No	2	
EIRMC Eastern Idaho Regional Medical Center 3100 Channing Way, Idaho Falls, ID Lat: 43°28.282' N Long: 111°59.491' W	5 hr.	1 hr. & 15 min	208-227-2010	Yes	Yes	2	
University of Utah Hospital 50 N Medical Drive, Salt Lake City, UT Lat: 40° 46.357' N Long: 111° 50.239' W	5 hrs. & 15 min	1 hr. & 30 min	801-300-0927	Yes	Yes	1	
St. Luke's Occupational Health Clinic 600 N. Robbins Rd. Suite 102 Boise, ID	1 hr.	n/a	208-706-7500	No	No	n/a	
6. Divisions		Area Location Capability					
Alpha/Whiskey/Zulu	EMS Responders & Capability:	EMT1 Andrew Bertovich (AEMF) 208-891-8521 Medic 1 Ben Flores (EMPF) 559-901-2543					
	Equipment Available on Scene:	ALS gear & 4x4 pickups					
Xray	EMS Responders & Capability:	REMS1 Cody Andrews (EMPF) 479-225-0836 Medic 2 Chad Fussell (EMPF) 936-499-3114 Ambo 1 Kyle Kemerer (EMPF) 650-868-2803					
	Equipment Available on Scene:	4x4 pickup, UTV, Ambulance, ALS & rescue gear					
ICP	EMS Responders & Capability:	MEDL Anthony Skube (EMTF) 720-633-3225 MEDL(t) Kaitlin McKelvey (EMPF) 208-519-2668					
	Equipment Available on Scene:	ALS gear & 4x4 SUV					
7. Prepared By (Medical Unit Leader)		8. Date/Time	9. Reviewed By (Safety Officer)		10. Date/Time		
Anthony Skube MEDL 		10/14/2024 1600	Todd DeMasters SOFC 		10/14/2024 1600		

MEDICAL PLAN (ICS 206 WF)

Controlled Unclassified Information//Basic

Medical Incident Report

FOR A NON-EMERGENCY INCIDENT, WORK THROUGH CHAIN OF COMMAND TO REPORT AND TRANSPORT INJURED PERSONNEL AS NECESSARY.

FOR A MEDICAL EMERGENCY: IDENTIFY ON-SCENE INCIDENT COMMANDER BY NAME AND POSITION AND ANNOUNCE "MEDICAL EMERGENCY" TO INITIATE RESPONSE FROM IMT COMMUNICATIONS/DISPATCH.

Use the following items to communicate situation to communications/dispatch.

1. CONTACT COMMUNICATIONS / DISPATCH (Verify correct frequency prior to starting report)

Ex: "Communications, Div. Alpha. Stand-by for Emergency Traffic."

2. INCIDENT STATUS: Provide incident summary (including number of patients) and command structure.

Ex: "Communications, I have a Red priority patient, unconscious, struck by a falling tree. Requesting air ambulance to Forest Road 1 at (Lat./Long.) This will be the Trout Meadow Medical, IC is TFLD Jones. EMT Smith is providing medical care."

Severity of Emergency / Transport Priority	<input type="checkbox"/> RED / PRIORITY 1 Life or limb threatening injury or illness. Evacuation need is IMMEDIATE <i>Ex: Unconscious, difficulty breathing, bleeding severely, 2^o – 3^o burns more than 4 palm sizes, heat stroke, disoriented.</i> <input type="checkbox"/> YELLOW / PRIORITY 2 Serious Injury or illness. Evacuation may be DELAYED if necessary. <i>Ex: Significant trauma, unable to walk, 2^o – 3^o burns not more than 1-3 palm sizes.</i> <input type="checkbox"/> GREEN / PRIORITY 3 Minor Injury or illness. Non-Emergency transport <i>Ex: Sprains, strains, minor heat-related illness.</i>	
Nature of Injury or Illness & Mechanism of Injury		<i>Brief Summary of Injury or Illness (Ex: Unconscious, Struck by Falling Tree)</i>
Evacuation Request		<i>Air Ambulance / Short Haul/Hoist Ground Ambulance / Other</i>
Patient Location		<i>Descriptive Location & Lat. / Long. (WGS84)</i>
Incident Name		<i>Geographic Name + Medical (Ex: Trout Meadow Medical)</i>
On-Scene Incident Commander		<i>Name of on-scene IC of Incident within an Incident (Ex: TFLD Jones)</i>
Patient Care		<i>Name of Care Provider (Ex: EMT Smith)</i>

3. INITIAL PATIENT ASSESSMENT: Complete this section for each patient as applicable (start with the most severe patient)

Patient Assessment: See IRPG PAGE 106

Treatment:

4. EVACUATION PLAN:

Evacuation Location (if different): (Descriptive Location (drop point, intersection, etc.) or Lat. / Long.) Patient's ETA to Evacuation Location:

Helispot / Extraction Site Size and Hazards:

5. ADDITIONAL RESOURCES / EQUIPMENT NEEDS:

Example: Paramedic/EMT, crews, immobilization devices, AED, oxygen, trauma bag, IV/fluid(s), splints, rope rescue, wheeled litter, HAZMAT, extrication

6. COMMUNICATIONS: Identify State Air/Ground EMS Frequencies and Hospital Contacts as applicable

Function	Channel Name/Number	Receive (RX)	Tone/NAC *	Transmit (TX)	Tone/NAC *
COMMAND					
AIR-TO-GRND					
TACTICAL					

7. CONTINGENCY: Considerations: If primary options fail, what actions can be implemented in conjunction with primary evacuation method? Be thinking ahead..

8. ADDITIONAL INFORMATION: Updates/Changes, etc.

REMEMBER: Confirm ETAs of resources ordered. Act according to your level of training. Be Alert. Keep Calm. Think Clearly. Act Decisively.

