

# INCIDENT ACTION PLAN

# VALLEY FIRE INCIDENT

ID-SWS-001367

Monday



## OPERATIONAL PERIOD



10/21/2024 0700  
to  
10/21/2024 2000



IDZ421-1520- Oct 21, 2024

**.DISCUSSION...**

No major updates from this morning. An upper trough passes to the north on Monday, bringing just enough moisture for east-central Oregon and central Idaho to receive some precipitation. Wind gusts of 20-30 mph Monday afternoon for most of the area outside the Snake Plain. Temps 5-10 degrees above normal and winds typical for the rest of the week.

**.MONDAY...**

Sky/weather.....Mostly sunny.

Max temperature.....56 to 66, except 48 to 56 above 6500 feet.

24 hr trend.....On average, 3 degrees cooler.

Min humidity.....26 to 35 percent, except 32 to 44 percent above 6500 feet.

24 hr trend.....On average, 4 percent drier.

20-foot winds.....

Valleys/lwr slopes...Light upslope winds less than 8 mph in the morning, becoming southwest 8 to 12 mph with gusts to 20 mph in the afternoon.

Ridges/upr slopes....South 8 to 14 mph. Gusts to 22 mph in the afternoon.

Haines Index.....2 very low.

LAL.....1.

CWR /0.10 inch/.....0 percent.

Smoke Dispersal:

Mixing Height.....4500-6000 ft AGL.

Transport Winds....Southwest 15 to 20 mph.

**.MONDAY NIGHT...**

Sky/weather.....Partly cloudy.

Min temperature.....30 to 41.

24 hr trend.....On average, 4 degrees cooler.

Max humidity.....57 to 82 percent.

24 hr trend.....On average, unchanged.

20-foot winds.....

Valleys/lwr slopes...Southwest 8 to 12 mph in the evening, becoming light downslope less than 8 mph after midnight.

Haines Index.....2 very low.

LAL.....1.

CWR /0.10 inch/.....0 percent.

Smoke Dispersal:

Mixing Height.....100-200 ft AGL.

Transport Winds....Northwest up to 10 mph.

## ORGANIZATION ASSIGNMENT LIST (ICS 203)

<b>1. Incident Name:</b> Valley Fire		<b>2. Operational Period: Date From:</b> 10/21/2024 Time From: 0700		<b>Date To:</b> 10/21/2024 <b>Time To:</b> 2000	
<b>3. Incident Commander(s) and Command Staff:</b>			<b>7. Operation Section:</b>		
IC/UC's	Justin Bedard	Operations	Jay Bertek		
Deputy IC		Planning Ops	Joe Livreri		
Safety Officer	Todd DeMasters	Night Ops			
Information Officer	Robbie Johnson	Staging Area			
Liaison Officer		<b>Branch</b>	<b>I</b>		
<b>4. Agency/Organization Representatives:</b>		Division/Group	A/W/Z	Tolo Martinez	
Agency/Organization	Name	Division/Group			
Idaho Dept Lands	Dave Schwartz	Division/Group	XRAY	Robert Picazo/Jerry Hart(t)	
BLM AA	Ammon Wilhelm	Division/Group	ZULU		
USFS AA	Adriene Holcomb	Division/Group			
		<b>Branch</b>	<b>II</b>		
		Division/Group			
		Division/Group			
		Division/Group			
		Division/Group			
		<b>Branch</b>	<b>III</b>		
		Division/Group			
		Division/Group			
		Division/Group			
		Division/Group			
		<b>Branch</b>	<b>IV</b>		
		Division/Group			
<b>5. Planning Section:</b>			Division/Group		
Chief	Robert Washburn	Division/Group			
Deputy	Justin T Saiz	Division/Group			
Resource Unit		Division/Group			
Situation Unit		<b>Branch</b>	<b>V</b>		
Documentation Unit		Division/Group			
Demobilization Unit		Division/Group			
SCKN	Jimmie Carter	Division/Group			
GISS	Audrey Sauvey Virtual	Division/Group			
FBAN		Division/Group			
IMET		<b>Air Operations Branch</b>		<b>Director:</b>	
Training Tech Spec		Air Support Group Supervisor			
		Air Tactical Group Supervisor			
<b>6. Logistics Section</b>			Helibase Manager	Jeremy Schwandt	
Chief	Shannon Sanders				
Deputy	Joseph Smith	<b>8. Finance/Administration Section:</b>			
Supply Unit		Chief	Sierra Brewer / Janice Minarik		
Facilities Unit		Deputy			
Base Camp Manager	Brianna Mitrione	Time Unit	Lori Cottee		
Communications Unit		Procurement Unit			
Medical Unit	Anthony Skude / Kaitlin McKelvey (t)	Comp/Claims Unit			
		Cost Unit			
<b>Prepared By: Name:</b>	Robert Washburn	<b>Position/Title:</b>	PSC	<b>Signature:</b> <i>Robert Washburn</i>	
<b>ICS 203</b>		<b>Date/Time:</b>	10/20/2024 2300 hours	NIMS IAP	



# ASSIGNMENT LIST (ICS 204 WF)

CONTROLLED UNCLASSIFIED  
INFORMATION//BASIC

<b>1. Incident Name:</b> <p style="text-align: center; font-size: 1.2em;"><b>Valley Fire</b></p>		<b>2. Operational Period:</b> Date From: 10/21/24      Date To: 10/21/24 Time From: 0700              Time To: 2000				<b>3. Branch</b> <p style="text-align: center; font-size: 1.5em;"><b>I</b></p>		<b>Division</b> <p style="text-align: center; font-size: 1.5em;"><b>XRAY</b></p>	
<b>4. Operations Personnel:</b>						<b>Page 1 of 1</b>			
Operations Section Chief: <b>Jay Bertek</b>		Night Ops:							
Branch Director:		Branch Safety:							
Division/Group Supervisor: <b>Robert Picazo/Jerry Hart(t)</b>		Air Attack:							
<b>5. Resources Assigned:</b>		<b>** Resources Below in Bold are 12 Hour **</b>							
Resource Identifier	ALS	LWD	Leader	Personnel	Request #	Hours	Reporting Location		
WTS3 - KKS WATER SERVICE INC		10/26	<b>ETHAN COOK</b>	<b>1</b>	<b>E-54</b>	<b>0700-2000</b>			
DZR2 - SAND HOLLOW FD D22		10/24	<b>DUSTAN WENGER</b>	<b>2</b>	<b>E-18</b>	<b>0700-2000</b>			
REMS1 OZARK MEDICS	YES	10/23	<b>CASH CAWTHORN</b>	<b>2</b>	<b>O-21</b>	<b>0700-2000</b>			
REMS-2 KCFR	YES	10/20	<b>CHAD WHALEY</b>	<b>4</b>	<b>O-32</b>	<b>0700-2000</b>			
AMBO1 - FRONT LINE EMS	YES	10/24	<b>KYLE KEMERER</b>	<b>2</b>	<b>E-43</b>	<b>0700-2000</b>			
<b>6. Work Assignments:</b>									
Hold and improve control lines to minimize chance of possible fire growth									
Suppression Repair refer to turn back standards									
<b>7. Special Instructions:</b>									
<b>8. Communications</b>									
Name	Ch	Function	Rx Freq	Rx Tone	Tx Freq	Tx Tone	Mode	Notes	
COMMAND 8	8	COMMAND	173.1750	(T12) 127.3	165.9875	(T12) 127.3	A		
TAC 3	3	TACTICAL	168.6000	(T12) 127.3	168.6000	(T12) 127.3	A		
A/G PRIMARY	11	A/G TAC	168.9625		168.9625		A		
ST COMM	15	EMERGENCY	155.2800		155.2800	(T6) 156.7	A		
AIRGUARD	16	EMERGENCY	168.6250	0.0	168.6250	(T1) 110.9	A		
<b>9. Prepared by: Name:</b> Robert Washburn                      PSC									
Signature: _____									
<b>ICS 204</b>		Date/Time: 10/20/2024 2200				Personnel Count: 11			

# ICS 205 - INCIDENT RADIO COMMUNICATIONS PLAN

CONTROLLED UNCLASSIFIED  
INFORMATION//BASIC

<b>1. Incident Name:</b>  <p style="text-align: center;"><b>Valley Fire</b></p> <p style="text-align: center;"><b>Incident Channels</b></p>	<b>2. Date/Time Prepared</b>  Date: 10/19/2024 Time: 1930	<b>3. Operational Period:</b>  Date From: 10/20/24      Date To: 10/20/24 Time From: 0700          Time To: 2000
---	--	---

**4. Communications**

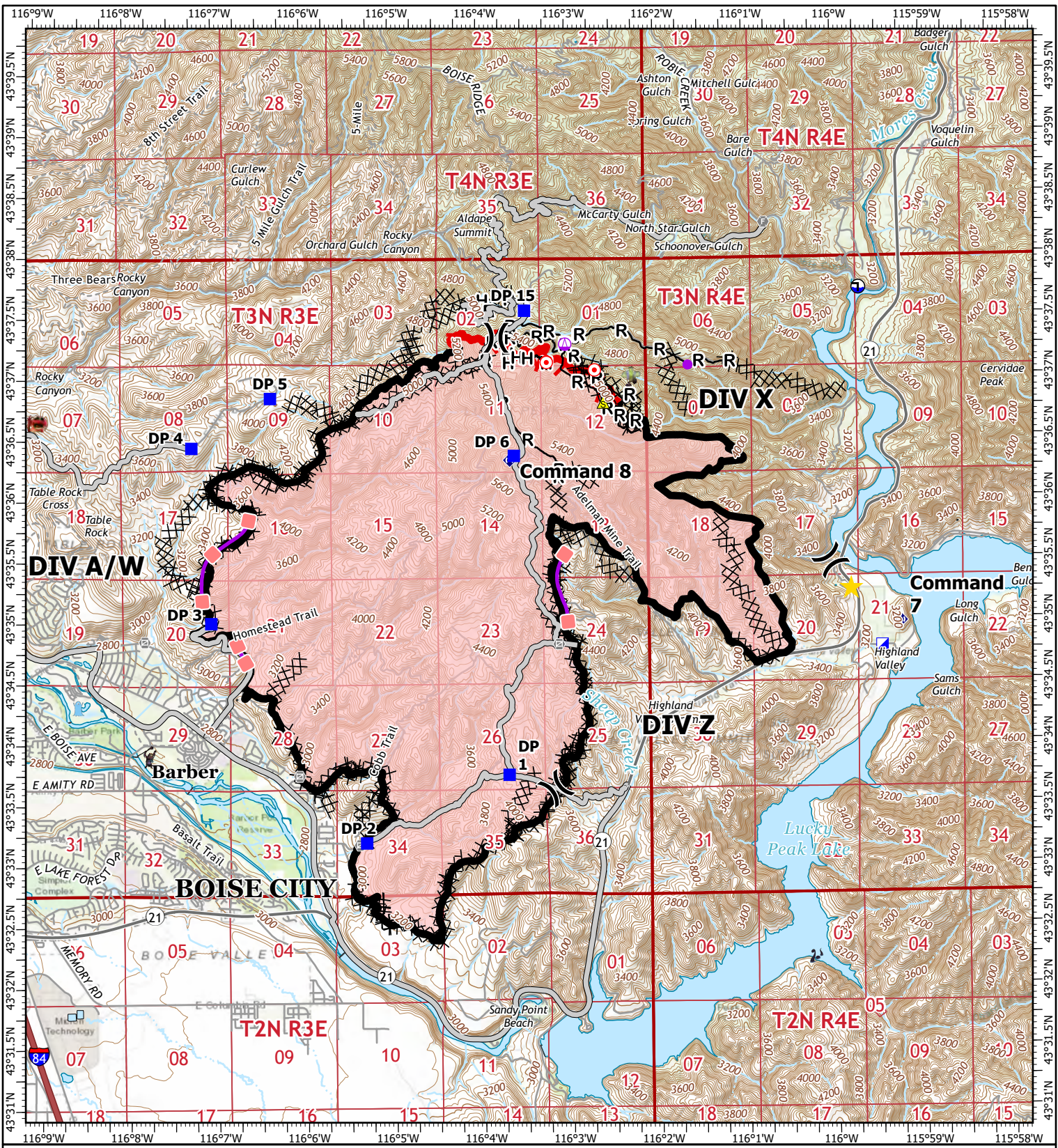
Ch#	Function	Name	Assigned To	Rx Freq	Rx Tone	Tx Freq	Tx Tone	Mode	Notes
1	TACTICAL	TAC 1	DIV A/W/Z	168.0500	(T12) 127.3	168.0500	(T12) 127.3	A	
2	TACTICAL	TAC 2		168.2000	(T12) 127.3	168.2000	(T12) 127.3	A	
3	TACTICAL	TAC 3	DIV XRAY	168.6000	(T12) 127.3	168.6000	(T12) 127.3	A	
4	TACTICAL	TAC 4	DIV ZULU	166.7250	(T12) 127.3	166.7250	(T12) 127.3	A	
5									
6									
7	COMMAND	COMMAND 7	ALL DIVS	171.1000	(T12) 127.3	162.1875	(T12) 127.3	A	
8	COMMAND	COMMAND 8	ALL DIVS	173.1750	(T12) 127.3	165.9875	(T12) 127.3	A	
9	COMMAND	SHAFFER		159.4650		151.2150	(T2) 123.0	A	
10	COMMAND	LUCKY PEAK		168.4250		163.1250	(T30) 179.9	A	
11	A/G TAC	A/G PRIMARY	ALL DIVS	168.9625		168.9625		A	
12	A/G TAC	A/G SECONDARY		169.4500		169.4500		A	
13	A/G TAC	IDL A/G		151.4500		151.4500		A	
14									
15	EMERGENCY	ST COMM	ALL DIVS	155.2800		155.2800	(T6) 156.7	A	
16	EMERGENCY	AIRGUARD	ALL DIVS	168.6250	0.0	168.6250	(T1) 110.9	A	
17									
18									
19									
20									

**5. Special Instructions**

## AIR OPERATIONS SUMMARY (ICS 220)

<b>1. Incident Name:</b> Valley		<b>2. Operational Period:</b> Date From: 10/19/24      Date To: 10/21/24 Time From: 0800      Time To: 1900			<b>3. Sunrise:</b> <b>Sunset:</b>  1849+30=1919	
<b>4. Remarks</b> (safety notes, hazards, air operations special equipment, etc.): No aircraft assigned Call Boise Dispatch for loan. Type 3 available at Garden Valley +15 flight time to incident.  220 Valid until 10/21/24			<b>5. Ready Alert Aircraft:</b> Medivac: Contact Boise Dispatch New Incident: 208-384-3400			<b>6. Temporary Flight Restriction Number:</b> Altitude: NONE Center Point:
			<b>8. Frequencies:</b>	AM	FM	<b>9. Fixed-Wing</b> (category/kind/type, make/model, N#, base):
			Air/Air Fixed-Wing			Air Tactical Group Supervisor Aircraft:
<b>7. Personnel:</b>	Name:	Phone Number:	Air/Air Rotary-Wing – Flight Following			
Air Operations Branch Director			Air/Ground	Primary	168.9625	Secondary 169.4500
Air Support Group Supervisor			Command			Other Fixed-Wing Aircraft:
Air Tactical Group Supervisor			Deck Coordinator			
Helicopter Coordinator			Take-Off & Landing Coordinator			
Helibase Manager	Garden Valley HB	208-462-3320	Air Guard			168.625 RX/TX, TX tone 110.9
<b>10. Helicopters</b> (use additional sheets as necessary):						
FAA N#	Category/Kind/Type	Make/Model	Base	Available	Start	Remarks
N132BH	Type 3	AS-350B3	Garden Valley Helibase	0830	Order thru Dispatch	Recon/Cargo/Buckets
<b>11. Prepared by:</b> Name: <u>DW Cook</u>			Position/Title: <u>HEBM</u>		Signature: <u>D. Cook</u>	
ICS 220, Page 1			Date/Time: <u>10/18/24 1610</u>			





**IAP**  
 Valley Fire  
 ID-SWS-001367  
 10/20/24  
 9904 acres at 10/10/24 @ 2250hrs

1:80,000 | 10/18/2024 1910  
 Acres from IR and GPS  
 North American 1983 Datum, Lat/Long Grid

- |                         |                          |                                 |                        |
|-------------------------|--------------------------|---------------------------------|------------------------|
| ★ Weed Wash             | ⊙ Fire Station           | ■ Retardant Drop                | --- Trail              |
| ● Helispot              | ⬢ Repeater               | ▬ Contained                     | — Pipeline             |
| ⊕ Sling Site            | ▲ Safety Zone            | ▬ Uncontained                   | — Perennial Stream     |
| ) Division Break        | ⊕ Draft Site             | ▬ Wildfire Daily Fire Perimeter | — Canal/Ditch          |
| ■ Incident Command Post | ⊗ Completed Dozer Line   | ▬ Expressway                    | — Underground Pipeline |
| ■ Drop Point            | — Completed Hand Line    | ▬ Local Connector               | — Intermittent Stream  |
| ⊙ Hot Spot - Spot Fire  | — Completed Road as Line | ▬ Local Road                    | ▬ Township/Range       |
| ⊙ Gate                  | — Access Route           | ▬ Ramp                          | ▬ Section              |

\*\* Find the 5 monsters hidden in the map \*\*

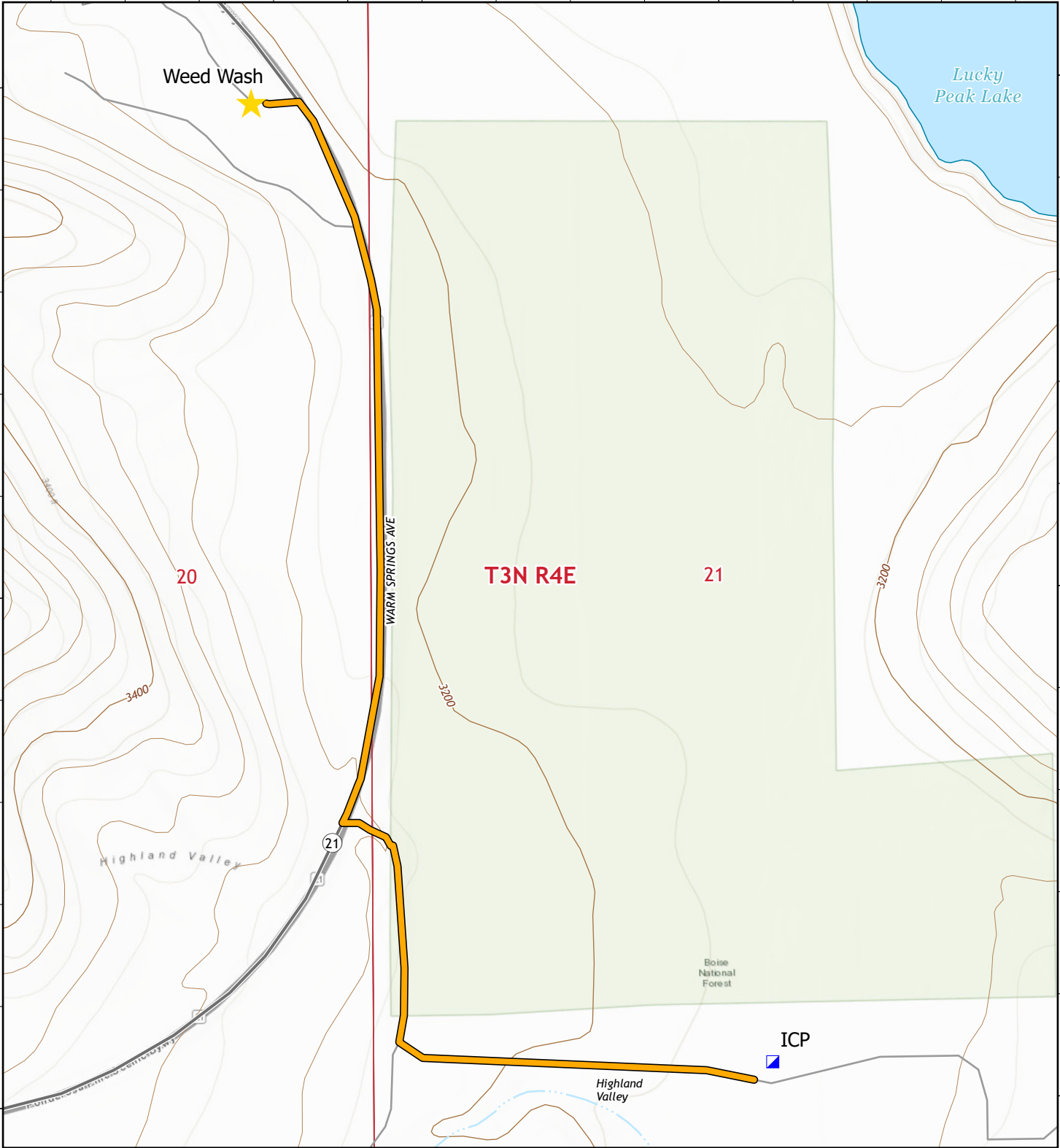


115°59.5'W

43°35'N

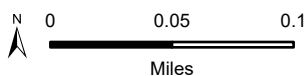
43°35'N

115°59.5'W











# Weed Wash

Hours of Operation:  
0800 - 1200  
1300 - 1900



1:5,000 | 10/12/2024 1252  
Acres from IR and GPS  
North American 1983 Datum, LatLong Grid

-  Weed Wash
-  Incident Command Post
-  Route to Weed Wash
-  Local Connector
-  Local Road
-  Intermittent Stream
-  Township/Range
-  Section

<b>Nevada Team 2 Type 3 Team Contact Roster</b>			
<b>Position</b>	<b>Name</b>	<b>Cell</b>	<b>Email</b>
<b>Incident Commander</b>	Justin Bedard	702-357-0898	justin.bedard@usda.gov
<b>Safety</b>	Todd Demasters	208-830-6283	todd.demasters@usda.gov
<b>Medical Unit Leader</b>	Anthony Skube	720-633-3225	anthony_skube@firenet.gov
<b>MEDL(T)</b>	Kaitlin McKelvey	208-519-2668	Kaitlin.jmmh@gmail.com
<b>Operations</b>	Jay Bertek	951-805-9362	jaybertek@gmail.com
<b>Ops Planning</b>	Joseph Livreri	775-293-5902	jlivreri@forestry.nv.gov
<b>Plans</b>	Robert Washburn	775-962-1552	dyna1017@gmail.com
<b>GISS</b>	Audrey Sauvey	714-624-1061	asauvey@blm.gov
<b>Logistics</b>	Shannon Sanders	775-397-1285	shannon3214@yahoo.com
<b>Logistics</b>	Joseph Smith	702-879-2668	Joseph_smith@firenet.gov
<b>Finance</b>	Sierra Brewer	775-870-6268	sabrewer@blm.gov

## Finance Reminders

### CTRs

- Total your daily hours and circle them on your CTR
- Document your CTR when Operations determines you are not able to take a lunch break
- When recording hazard pay, show the category of hazardous exposure (e.g., firefighting, hover hookup) on your CTR
- List all crewmembers on your CTR
- Write/sign legibly
- Keep your time current

CREW TIME REPORT							
1) CREW NAME <b>Operations</b>				2) CREW NUMBER <b>0-52</b>			
3) OFFICE RESPONSIBLE FOR/ BY <b>Caribou-Verghee</b>			4) FIRE NAME <b>Tie</b>			5) FIRE NUMBER <b>10-CIF-00318</b>	
6) HOURS	7) NAME OF EMPLOYEE	8) CLASSIFICATION	9) DATE <b>8/28</b>		10) DATE		
			11) ON	12) OFF	13) ON	14) OFF	
	<b>H Tom Smith</b>		<b>0600</b>	<b>2100</b>			
					<b>16</b>		
15) REMARKS							
<b>Unable to take meal break due to active fire in DIV B</b>							
<b>Hazard - Fire fighting on uncontrolled fireline</b>							
16) OPERATOR SIGNATURE <b>John Barnes</b>				17) TITLE (Owner-in-Chief) <b>DIVS</b>			
18) NAME (Position, Position, Emergency, Title, Dept)				19) DATE			

EMERGENCY EQUIPMENT SHIFT TICKET				E-20
1) INCIDENT NUMBER <b>AG-07NV-B-16-7777</b>		2) CONTRACTOR <b>Jones Equipment</b>		
3) INCIDENT LOCATION <b>Lost Creek</b>		4) INCIDENT NUMBER <b>10-CIF-003117</b>		
5) EQUIPMENT MAKE <b>Caterpillar</b>		6) EQUIPMENT MODEL <b>Dozer, DoC</b>		
7) SERIAL NUMBER <b>47A99876</b>		8) OPERATOR(S) <b>Paul Jones / Randy Smith</b>		
9) DATE <b>7/14/16</b>		10) HOURS <b>0600 0200 6.0</b>		
11) DATE <b>7/14/16</b>		12) HOURS <b>1230 2030 8.0</b>		
13) OPERATOR SIGNATURE <b>Paul Jones</b>		14) DISPATCHER SIGNATURE <b>Rich Brown</b>		15) TIME SHOWN <b>7/16/16</b>

- Make sure resource order number is listed on the shift ticket.
- Fill out shift ticket completely and legibly.
- Ensure signatures are legible.
- Document names of all operators.
- Document daily if transport is being kept by the incident
- Include all shift hours and show a lunch break or documentation for a compensable lunch break – even if equipment is on a daily rate
- Keep your time current

Please submit **daily** CTRs and Equipment Shift Tickets electronically through the email address below.

[2024.valley.finance@firenet.gov](mailto:2024.valley.finance@firenet.gov)

If you have any possible **CLAIMS**, DO NOT wait until last minute. Please get them into Finance early as possible. Use email above to request forms or submit.

**THANK YOU FROM FINANCE**  
**ANY QUESTIONS, GIVE US A TEXT OR CALL.**

928.607.6546 or 775.870.6268





## 2024 Valley Fire

Please use this QR code to upload fire-related photos and videos for public information, social media, news media, InciWeb, and for the IAP. Please refrain from posting incident-related videos/photos to your personal social media.

Please take photos/videos only when it is safe to do so. Be sure people in photos are wearing proper protective gear. It may be unsafe to shoot photos or video. A crew member who is concentrating on a camera may lose their situational awareness.



**For assistance with media or public inquires**

Contact Robbie Johnson, PIO, Nevada Team 2

208-908-1786

rjohnson@idl.idaho.gov

<b>Incident:</b> Valley Fire	<b>Date:</b> 10/ 21 /2024	<b>Operational Period:</b> 10 / 21 /2024 day shift
---------------------------------	------------------------------	---



# SAFETY MESSAGE



*Fire fighter safety comes first on every fire, every time*

MAJOR HAZARDS AND RISKS	
<ul style="list-style-type: none"> <li>• Extreme fire behavior potential</li> <li>• Dehydration Heat Related Injuries—Drink lots of water</li> <li>• Potential for fast moving fire with long range spotting..... <b>Ensure LCES in place</b></li> <li>• Snags</li> </ul>	<ul style="list-style-type: none"> <li>• Driving narrow dusty roads</li> <li>• Bees and insect bites</li> <li>• Steep Rocky Terrain</li> <li>• UTV/ATV use (Helmets and carded)</li> <li>• Slips, Trips, Falls</li> <li>• Weather Events</li> </ul>

## Safety Spotlight:

Risk management doesn't get in the way of doing the mission – it is the way we do the mission. The risk management process assists in ensuring that critical factors and risks of the fireline work environment are considered during decision-making. Good risk management utilizes a five-step process:

**Step 1 – Situational Awareness:**

**Step 2 – Hazard Assessment:**

**Step 3 – Hazard Control:**

**Step 4 – Decision Point (decision to accept or not accept the risks associated with an action):**

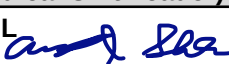
**Step 5 – Evaluation:**

## Quote of the day

“I get a load of good ideas. The problem is most of them suck”. **George Carlin**

Safety Officer  
Todd DeMasters, SOFC

## MEDICAL PLAN (ICS 206 WF)

1. Incident/Project Name		2. Operational Period					
Valley Fire		10/21/2024 0700-2000					
3. Ground Evacuation							
Name	Complete Address	Phone/Frequency			ALS		
Ada County Paramedics	370 Benjamin Lane, Boise, ID 83704	911 or 208-377-6790			Yes		
East Boise Co. Ambulance	204 Commercial St. Idaho City, ID 83631	911 or 208-392-4411			No		
4. Air Evacuation							
Name	Phone / Frequency	Capabilities					
Air Methods	Dispatch/911 800-247-4324 (Direct)	Critical Care Team, Paramedic, RN, Blood, TXA, Night Vision					
Life Flight Network	Dispatch/911 800-232-0911 (Direct)	Critical Care Team, Paramedic, RN, Blood, TXA, Night Vision					
5. Clinic/Hospitals							
Name and Address	Ground	Air	Phone	Heli	Burn	Level	
Saint Alphonsus Regional Medical Center 1055 N Curtis Rd, Boise, ID Lat: 43° 36.828' N Long: 116° 15.338' W	1 hr. & 10 min	10 min	208-367-3223	Yes	No	2	
EIRMC Eastern Idaho Regional Medical Center 3100 Channing Way, Idaho Falls, ID Lat: 43°28.282' N Long: 111°59.491' W	5 hr.	1 hr. & 15 min	208-227-2010	Yes	Yes	2	
University of Utah Hospital 50 N Medical Drive, Salt Lake City, UT Lat: 40° 46.357' N Long: 111° 50.239' W	5 hrs. & 15 min	1 hr. & 30 min	801-300-0927	Yes	Yes	1	
St. Luke's Occupational Health Clinic 600 N. Robbins Rd. Suite 102 Boise, ID	1 hr.	n/a	208-706-7500	No	No	n/a	
6. Divisions		Area Location Capability					
Alpha/Whiskey/Zulu	EMS Responders & Capability:	EMT 1 Andrew Bertovich (AEMF) 208-891-8521 Medic 1 Ben Flores (EMPF) 559-901-2543 Medic 3 Kelly Max (EMPF) 520-508-4486					
	Equipment Available on Scene:	ALS gear & 4x4 pickups					
Xray	EMS Responders & Capability:	REMS 1 Cash Cawthon (EMPF) 479-619-6762 REMS 2 Chad Whaley (EMPF) 208-691-0537 Ambo 1 Kyle Kemerer (EMPF) 650-868-2803					
	Equipment Available on Scene:	4x4 pickup, UTVs, ambulance, ALS & rescue gear					
ICP	EMS Responders & Capability:	MEDL Anthony Skube (EMTF) 720-633-3225 MEDL(t) Kaitlin McKelvey (EMPF) 208-519-2668					
	Equipment Available on Scene:	ALS gear & 4x4 SUV					
7. Prepared By (Medical Unit Leader)		8. Date/Time	9. Reviewed By (Safety Officer)		10. Date/Time		
Anthony Skube MEDL 		10/20/2024 1300	Todd DeMasters SOFC		10/20/2024 1300		

# MEDICAL PLAN (ICS 206 WF)

Controlled Unclassified Information//Basic

## Medical Incident Report

**FOR A NON-EMERGENCY INCIDENT, WORK THROUGH CHAIN OF COMMAND TO REPORT AND TRANSPORT INJURED PERSONNEL AS NECESSARY.**

**FOR A MEDICAL EMERGENCY: IDENTIFY ON-SCENE INCIDENT COMMANDER BY NAME AND POSITION AND ANNOUNCE "MEDICAL EMERGENCY" TO INITIATE RESPONSE FROM IMT COMMUNICATIONS/DISPATCH.**

**Use the following items to communicate situation to communications/dispatch.**

**1. CONTACT COMMUNICATIONS / DISPATCH** (Verify correct frequency prior to starting report)

*Ex: "Communications, Div. Alpha. Stand-by for Emergency Traffic."*

**2. INCIDENT STATUS:** Provide incident summary (including number of patients) and command structure.

*Ex: "Communications, I have a Red priority patient, unconscious, struck by a falling tree. Requesting air ambulance to Forest Road 1 at (Lat./Long.) This will be the Trout Meadow Medical, IC is TFLD Jones. EMT Smith is providing medical care."*

Severity of Emergency / Transport Priority	<input type="checkbox"/> <b>RED / PRIORITY 1 Life or limb threatening injury or illness. Evacuation need is IMMEDIATE</b> <i>Ex: Unconscious, difficulty breathing, bleeding severely, 2<sup>o</sup> – 3<sup>o</sup> burns more than 4 palm sizes, heat stroke, disoriented.</i> <input type="checkbox"/> <b>YELLOW / PRIORITY 2 Serious Injury or illness. Evacuation may be DELAYED if necessary.</b> <i>Ex: Significant trauma, unable to walk, 2<sup>o</sup> – 3<sup>o</sup> burns not more than 1-3 palm sizes.</i> <input type="checkbox"/> <b>GREEN / PRIORITY 3 Minor Injury or illness. Non-Emergency transport</b> <i>Ex: Sprains, strains, minor heat-related illness.</i>	
Nature of Injury or Illness & Mechanism of Injury		<i>Brief Summary of Injury or Illness (Ex: Unconscious, Struck by Falling Tree)</i>
Evacuation Request		<i>Air Ambulance / Short Haul/Hoist Ground Ambulance / Other</i>
Patient Location		<i>Descriptive Location &amp; Lat. / Long. (WGS84)</i>
Incident Name		<i>Geographic Name + Medical (Ex: Trout Meadow Medical)</i>
On-Scene Incident Commander		<i>Name of on-scene IC of Incident within an Incident (Ex: TFLD Jones)</i>
Patient Care		<i>Name of Care Provider (Ex: EMT Smith)</i>

**3. INITIAL PATIENT ASSESSMENT:** Complete this section for each patient as applicable (start with the most severe patient)

Patient Assessment: See IRPG PAGE 106

Treatment:

**4. EVACUATION PLAN:**

Evacuation Location (if different): (Descriptive Location (drop point, intersection, etc.) or Lat. / Long.) Patient's ETA to Evacuation Location:

Helispot / Extraction Site Size and Hazards:

**5. ADDITIONAL RESOURCES / EQUIPMENT NEEDS:**

*Example: Paramedic/EMT, crews, immobilization devices, AED, oxygen, trauma bag, IV/fluid(s), splints, rope rescue, wheeled litter, HAZMAT, extrication*

**6. COMMUNICATIONS: Identify State Air/Ground EMS Frequencies and Hospital Contacts as applicable**

Function	Channel Name/Number	Receive (RX)	Tone/NAC *	Transmit (TX)	Tone/NAC *
COMMAND					
AIR-TO-GRND					
TACTICAL					

**7. CONTINGENCY: Considerations:** If primary options fail, what actions can be implemented in conjunction with primary evacuation method? Be thinking ahead..

**8. ADDITIONAL INFORMATION:** Updates/Changes, etc.

**REMEMBER:** Confirm ETAs of resources ordered. Act according to your level of training. Be Alert. Keep Calm. Think Clearly. Act Decisively.



