



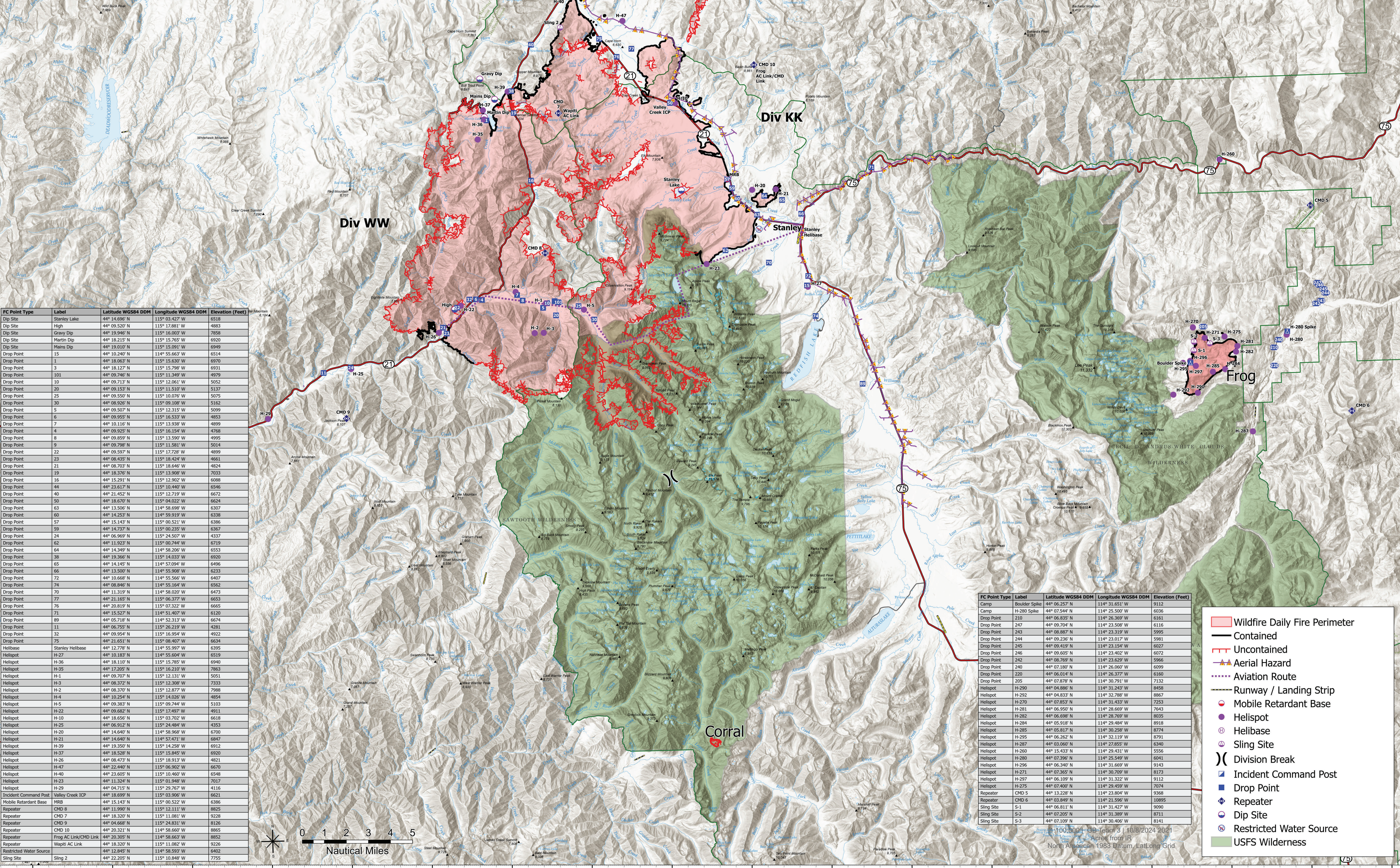
AIR OPERATIONS

WAPITI

ID-BOF-000683

10/9/2024 DAY

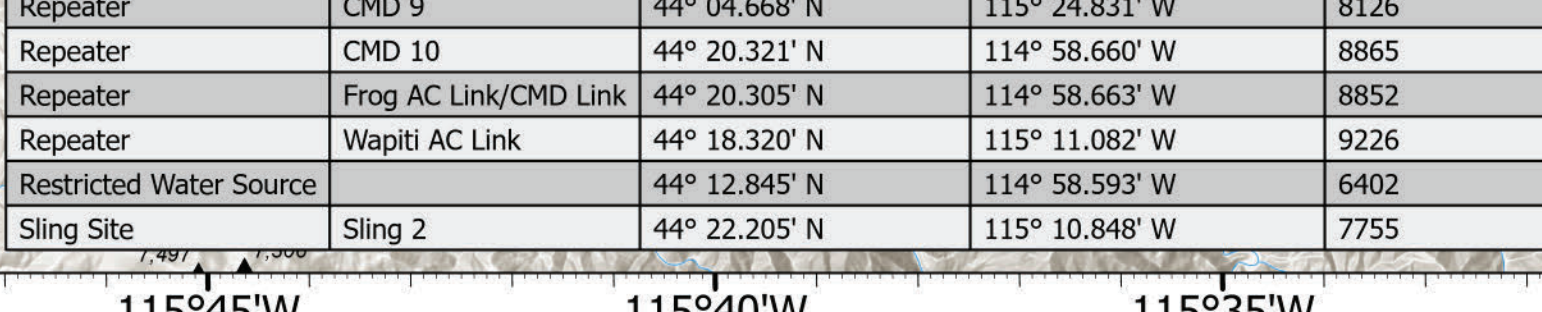
127,043 ACRES
AT 10/08/2024 @ 0153 HRS

FC Point Type	Label	Latitude WGS84 DDM	Longitude WGS84 DDM	Elevation (feet)
Dip Site	Stanley Lake	44° 15.692' N	115° 03.427' W	6518
Dip Site	Gravly Dip	44° 09.520' N	115° 17.881' W	4883
Dip Site	Martin Dip	44° 18.215' N	115° 15.765' W	6920
Dip Site	Mains Dip	44° 19.010' N	115° 15.091' W	6949
Drop Point	1	44° 10.240' N	114° 55.663' W	6514
Drop Point	3	44° 18.663' N	115° 15.630' W	6970
Drop Point	5	44° 18.127' N	115° 15.327' W	6921
Drop Point	101	44° 09.746' N	115° 11.349' W	4979
Drop Point	10	44° 09.713' N	115° 12.061' W	5052
Drop Point	20	44° 09.153' N	115° 11.510' W	5137
Drop Point	25	44° 09.550' N	115° 10.076' W	5075
Drop Point	30	44° 08.926' N	115° 09.108' W	5162
Drop Point	5	44° 09.507' N	115° 12.315' W	5099
Drop Point	6	44° 09.253' N	115° 13.533' W	4853
Drop Point	7	44° 10.116' N	115° 13.938' W	4899
Drop Point	4	44° 09.925' N	115° 16.154' W	4768
Drop Point	8	44° 09.859' N	115° 13.590' W	4995
Drop Point	9	44° 09.798' N	115° 11.581' W	5014
Drop Point	22	44° 09.597' N	115° 17.728' W	4899
Drop Point	23	44° 08.435' N	115° 18.424' W	4661
Drop Point	21	44° 08.760' N	115° 18.746' W	4824
Drop Point	19	44° 18.726' N	115° 13.908' W	7033
Drop Point	16	44° 15.291' N	115° 12.902' W	6088
Drop Point	44	44° 23.617' N	115° 10.440' W	6546
Drop Point	40	44° 21.452' N	115° 12.719' W	6672
Drop Point	50	44° 18.670' N	115° 04.022' W	6624
Drop Point	63	44° 13.506' N	114° 58.698' W	6307
Drop Point	60	44° 14.258' N	115° 05.930' W	6288
Drop Point	57	44° 15.143' N	115° 05.511' W	6286
Drop Point	59	44° 14.737' N	115° 00.235' W	6367
Drop Point	24	44° 06.969' N	115° 24.507' W	4337
Drop Point	62	44° 11.923' N	115° 00.744' W	6719
Drop Point	64	44° 14.349' N	114° 58.206' W	6553
Drop Point	38	44° 19.366' N	115° 14.033' W	6920
Drop Point	65	44° 14.145' N	114° 57.094' W	6496
Drop Point	66	44° 13.508' N	114° 55.908' W	6233
Drop Point	72	44° 10.668' N	114° 55.566' W	6407
Drop Point	74	44° 08.846' N	114° 55.164' W	6562
Drop Point	70	44° 11.319' N	114° 58.020' W	6473
Drop Point	77	44° 21.665' N	115° 06.377' W	6653
Drop Point	76	44° 20.819' N	115° 07.322' W	6665
Drop Point	71	44° 15.527' N	114° 55.407' W	6120
Drop Point	89	44° 05.118' N	114° 52.312' W	6674
Drop Point	31	44° 06.755' N	115° 26.219' W	4281
Drop Point	32	44° 09.954' N	115° 16.954' W	4922
Drop Point	75	44° 21.651' N	115° 08.407' W	6634
Helibase	Stanley Helibase	44° 12.778' N	114° 55.997' W	6395
Helispot	H-27	44° 10.183' N	114° 55.604' W	6519
Helispot	H-36	44° 18.110' N	115° 15.785' W	6940
Helispot	H-35	44° 17.855' N	115° 15.210' W	7883
Helispot	H-1	44° 09.707' N	115° 12.131' W	5051
Helispot	H-3	44° 08.372' N	115° 12.308' W	7333
Helispot	H-2	44° 08.370' N	115° 12.877' W	7988
Helispot	H-4	44° 10.254' N	115° 14.026' W	4854
Helispot	H-5	44° 09.383' N	115° 09.744' W	5103
Helispot	H-22	44° 09.682' N	115° 17.497' W	4911
Helispot	H-10	44° 18.636' N	115° 03.702' W	6618
Helispot	H-25	44° 06.912' N	115° 24.480' W	4263
Helispot	H-20	44° 14.640' N	114° 58.968' W	6700
Helispot	H-21	44° 14.640' N	114° 57.471' W	6847
Helispot	H-39	44° 19.350' N	115° 14.258' W	6912
Helispot	H-37	44° 18.528' N	115° 15.845' W	6920
Helispot	H-26	44° 08.473' N	115° 18.913' W	4821
Helispot	H-47	44° 18.240' N	115° 06.902' W	6670
Helispot	H-40	44° 23.605' N	115° 04.407' W	6548
Helispot	H-23	44° 11.324' N	115° 01.948' W	7017
Helispot	H-29	44° 04.715' N	115° 29.767' W	4116
Incident Command Post	Valley Creek ICP	44° 18.699' N	115° 03.906' W	6621
Mobile Retardant Base	MRB	44° 15.143' N	115° 00.522' W	6386
Repeater	CMD 8	44° 11.990' N	115° 12.111' W	8825
Repeater	CMD 7	44° 18.320' N	115° 11.081' W	9228
Repeater	CMD 9	44° 04.668' N	114° 58.111' W	8136
Repeater	CMD 10	44° 20.321' N	114° 58.660' W	8865
Repeater	Frog AC Link/CMD Link	44° 20.305' N	114° 58.663' W	8852
Repeater	Wapiti AC Link	44° 18.320' N	115° 11.082' W	9226
Restricted Water Source		44° 12.845' N	114° 58.593' W	6402
Sling Site	Sling 2	44° 22.205' N	115° 10.848' W	7755

FC Point Type	Label	Latitude WGS84 DDM	Longitude WGS84 DDM	Elevation (feet)
Camp	Boulder Spike	44° 06.257' N	114° 21.051' W	9112
Camp	H-280 Spike	44° 07.544' N	114° 25.500' W	6036
Drop Point	210	44° 06.835' N	114° 26.369' W	6161
Drop Point	247	44° 09.704' N	114° 23.508' W	6116
Drop Point	243	44° 08.887' N	114° 23.319' W	5995
Drop Point	244	44° 09.236' N	114° 23.017' W	5981
Drop Point	245	44° 09.419' N	114° 23.154' W	6027
Drop Point	246	44° 09.605' N	114° 23.407' W	6072
Drop Point	242	44° 08.669' N	114° 23.629' W	5966
Drop Point	240	44° 07.180' N	114° 26.067' W	6099
Drop Point	220	44° 06.014' N	114° 26.377' W	6160
Drop Point	205	44° 07.878' N	114° 30.791' W	7132
Helispot	H-290	44° 04.886' N	114° 31.243' W	8458
Helispot	H-292	44° 04.833' N	114° 32.788' W	8867
Helispot	H-270	44° 07.853' N	114° 23.453' W	7253
Helispot	H-291	44° 06.950' N	114° 25.650' W	7643
Helispot	H-282	44° 06.698' N	114° 28.769' W	8935
Helispot	H-284	44° 05.918' N	114° 29.484' W	8918
Helispot	H-285	44° 05.817' N	114° 30.258' W	8774
Helispot	H-295	44° 06.262' N	114° 32.119' W	8791
Helispot	H-287	44° 03.060' N	114° 27.855' W	6340
Helispot	H-260	44° 15.433' N	114° 29.431' W	5556
Helispot	H-286	44° 07.386' N	114° 25.660' W	6841
Helispot	H-296	44° 06.340' N	114° 31.669' W	9143
Helispot	H-271	44° 07.365' N	114° 30.709' W	8173
Helispot	H-297	44° 06.109' N	114° 31.322' W	9112
Helispot	H-275	44° 07.400' N	114° 29.459' W	7074
Repeater	CMD 5	44° 13.228' N	114° 23.804' W	9368
Repeater	CMD 6	44° 03.849' N	114° 21.596' W	10895
Sling Site	S-1	44° 06.811' N	114° 21.427' W	9060
Sling Site	S-2	44° 07.205' N	114° 31.389' W	8711
Sling Site	S-3	44° 07.109' N	114° 30.406' W	8811

- Wildfire Daily Fire Perimeter
- Contained
- Uncontained
- Aerial Hazard
- Aviation Route
- Runway / Landing Strip
- Mobile Retardant Base
- Helispot
- Helibase
- Sling Site
- Division Break
- Incident Command Post
- Drop Point
- Repeater
- Dip Site
- Restricted Water Source
- USFS Wilderness



1:100,000 - OB Team 3 | 10/8/2024 2021
127,043 Acres from IR
North American 1983 Datum, Lat/Long Grid