

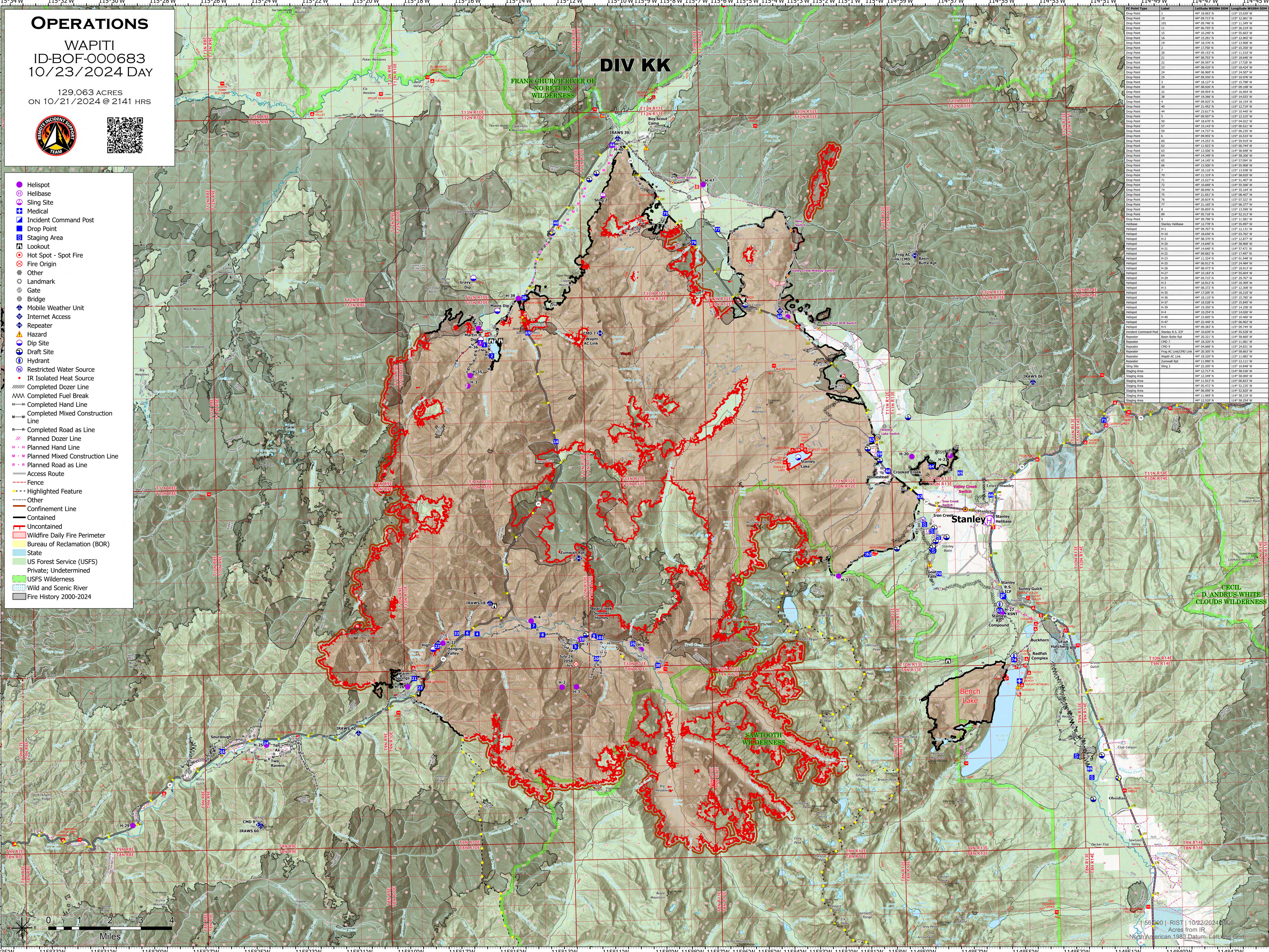
# OPERATIONS

WAPITI  
ID-BOF-000683  
10/23/2024 DAY

129,063 ACRES  
ON 10/21/2024 @ 2141 HRS



- Helispot
- Helibase
- Sling Site
- Medical
- Incident Command Post
- Drop Point
- Staging Area
- Lookout
- Hot Spot - Spot Fire
- Fire Origin
- Other
- Landmark
- Gate
- Bridge
- Mobile Weather Unit
- Internet Access
- Repeater
- Hazard
- Dip Site
- Draft Site
- Hydrant
- Restricted Water Source
- IR Isolated Heat Source
- Completed Dozer Line
- Completed Fuel Break
- Completed Hand Line
- Completed Mixed Construction Line
- Completed Road as Line
- Planned Dozer Line
- Planned Hand Line
- Planned Mixed Construction Line
- Planned Road as Line
- Access Route
- Fence
- Highlighted Feature
- Other
- Confinement Line
- Contained
- Uncontained
- Wildfire Daily Fire Perimeter
- Bureau of Reclamation (BOR)
- State
- US Forest Service (USFS)
- Private; Undetermined
- USFS Wilderness
- Wild and Scenic River
- Fire History 2000-2024



PC Point Type	Label	Latitude WGS84 DOM	Longitude WGS84 DOM
Drop Point	1	44° 09.713' N	115° 12.061' W
Drop Point	10	44° 09.740' N	115° 11.349' W
Drop Point	101	44° 09.740' N	115° 11.349' W
Drop Point	11	44° 09.767' N	115° 12.602' W
Drop Point	15	44° 10.240' N	115° 15.663' W
Drop Point	19	44° 15.293' N	115° 12.902' W
Drop Point	2	44° 09.850' N	115° 15.350' W
Drop Point	20	44° 09.153' N	115° 11.510' W
Drop Point	21	44° 09.900' N	115° 18.800' W
Drop Point	22	44° 09.597' N	115° 17.728' W
Drop Point	23	44° 09.430' N	115° 18.454' W
Drop Point	24	44° 09.900' N	115° 18.800' W
Drop Point	25	44° 09.550' N	115° 10.076' W
Drop Point	3	44° 16.127' N	115° 15.796' W
Drop Point	30	44° 16.127' N	115° 15.796' W
Drop Point	32	44° 09.954' N	115° 16.954' W
Drop Point	38	44° 16.360' N	115° 14.033' W
Drop Point	4	44° 16.452' N	115° 12.717' W
Drop Point	44	44° 21.617' N	115° 10.440' W
Drop Point	45	44° 09.900' N	115° 18.800' W
Drop Point	50	44° 18.670' N	115° 04.022' W
Drop Point	57	44° 15.143' N	115° 00.521' W
Drop Point	59	44° 15.272' N	115° 02.770' W
Drop Point	6	44° 09.950' N	115° 16.950' W
Drop Point	60	44° 14.253' N	114° 59.916' W
Drop Point	62	44° 16.320' N	114° 58.200' W
Drop Point	63	44° 13.506' N	114° 58.696' W
Drop Point	64	44° 14.349' N	114° 58.200' W
Drop Point	65	44° 14.468' N	114° 58.200' W
Drop Point	66	44° 13.500' N	114° 55.986' W
Drop Point	7	44° 10.110' N	115° 13.938' W
Drop Point	76	44° 15.527' N	114° 51.407' W
Drop Point	71	44° 10.660' N	114° 55.560' W
Drop Point	74	44° 09.920' N	115° 12.920' W
Drop Point	75	44° 21.851' N	115° 08.407' W
Drop Point	76	44° 20.810' N	115° 07.327' W
Drop Point	77	44° 21.160' N	115° 06.247' W
Drop Point	8	44° 09.850' N	115° 15.350' W
Drop Point	89	44° 05.718' N	114° 52.317' W
Drop Point	9	44° 09.850' N	115° 15.350' W
Helibase	Stanley Helibase	44° 12.778' N	114° 55.927' W
Helispot	H-1	44° 09.700' N	115° 12.117' W
Helispot	H-10	44° 18.800' N	115° 18.800' W
Helispot	H-2	44° 09.370' N	115° 12.877' W
Helispot	H-20	44° 14.640' N	114° 58.960' W
Helispot	H-21	44° 15.410' N	114° 57.410' W
Helispot	H-22	44° 09.680' N	115° 17.407' W
Helispot	H-23	44° 11.324' N	115° 03.948' W
Helispot	H-25	44° 09.910' N	115° 14.910' W
Helispot	H-26	44° 08.473' N	115° 18.913' W
Helispot	H-27	44° 10.187' N	114° 55.664' W
Helispot	H-28	44° 18.800' N	115° 18.800' W
Helispot	H-3	44° 09.372' N	115° 12.368' W
Helispot	H-35	44° 17.200' N	115° 16.210' W
Helispot	H-36	44° 18.110' N	115° 15.785' W
Helispot	H-37	44° 18.520' N	115° 15.845' W
Helispot	H-38	44° 19.700' N	115° 12.300' W
Helispot	H-4	44° 10.254' N	115° 14.020' W
Helispot	H-40	44° 23.800' N	115° 10.460' W
Helispot	H-47	44° 18.460' N	115° 06.370' W
Helispot	H-5	44° 09.383' N	115° 09.744' W
Incident Command Post	Stanley R.S. ICP	44° 10.630' N	114° 55.520' W
Repeater	Burn Basin Rpt	44° 20.323' N	114° 58.010' W
Repeater	CHD 7	44° 18.320' N	115° 11.081' W
Repeater	CHD 9	44° 04.668' N	115° 24.831' W
Repeater	Frog AC Link/CMD Link	44° 10.320' N	115° 03.948' W
Repeater	Wapiti AC Link	44° 18.320' N	115° 11.081' W
Repeater	Zumwalt Rpt	44° 11.990' N	115° 12.111' W
Staging Area	Staging 2	44° 11.350' N	115° 03.948' W
Staging Area	Staging 3	44° 15.717' N	114° 58.530' W
Staging Area	Staging 4	44° 13.349' N	114° 58.000' W
Staging Area	Staging 5	44° 11.960' N	114° 52.310' W
Staging Area	Staging 6	44° 05.472' N	114° 52.330' W
Staging Area	Staging 7	44° 06.090' N	114° 52.820' W
Staging Area	Staging 8	44° 11.960' N	114° 52.310' W
Staging Area	Staging 9	44° 12.520' N	114° 58.250' W

56300 | RIST | 10/22/2024 0900  
Acres from IR  
North American 1983 Datum - Lat-Long Grid