

# Cottonwood Peak Fire

NV-EKD-010319 – PD S7Y4 (1532)

**Friday August 29, 2025**

Day Operational Period 0600 - 2200



Maris Gabliks, ICCI  
Chris Woods, ICCI  
Joseph Alyea, ICCI (t)



#### Logistics Hours of Operation

Kitchen: Breakfast 0600 – 0900 /  
Dinner 1800 – 2200

Shower: 0500 – 1200 / 1400 – 2200

Supply: 0600 - 2100



Fuel Truck: 0500 – 2100

Weed Wash: 0700 – 1200 / 1300 - 2000

QR Code to download the IAP, maps, and  
Check-In

**IWI Emergency Phone 916-628-5549**


## INCIDENT OBJECTIVES (ICS 202)

<b>1. Incident Name:</b>	<b>2. Operational Period: DAY</b>	
COTTONWOOD PEAK	Date/Time From: 08/29/2025 0600 FRI	Date/Time To: 08/29/2025 2200 FRI
<b>3. Objective(s):</b>		
<p>Protect firefighter and public safety through a risk-based strategy that meets incident objectives, minimizes exposure, and addresses operational hazards with sound decision-making and situational awareness.</p> <p>Coordinate with jurisdictional partners to protect Tuscarora, Wild Horse Reservoir, Patsville, Mountain City, Duck Valley Reservation and surrounding areas—reducing threats to public safety, ranch lands, Hwy 226 &amp; 225 corridor, critical infrastructure, and high-value assets including the Tuscarora Geothermal Plant.</p> <p>Reduce impact to Cornucopia and Tuscarora Cultural Zones to avoid damage or loss of this highly valued historic cultural landscape.</p> <p>Minimize fire spread while protecting key values at risk—Greater Sage-grouse and sensitive trout habitat—within operational limits posed by fire behavior, resource access, and firefighter safety.</p> <p>Protect ESR projects, fuels treatments, and grazing allotments south and northwest of the fire to prevent loss of prior investments and reduce long-term socio-economic impacts to ranchers.</p>		
<b>4. Operational Period Command Emphasis:</b>		
<p>Use Direct and Indirect tactics, utilizing a full suppression strategy. Apply tactics that offer the highest probability of success.</p> <p>Maximize containment by leveraging opportunities to construct control lines that balance responder risk, values at risk, and probability of success.</p> <p>Implement the approved Fire Suppression Repair Plan while coordinating with resource advisors to minimize impacts to highly valued resources.</p> <p>Foster strong relationships with ranchers, local responders, and communities by demonstrating professionalism and delivering exceptional service to all impacted stakeholders.</p> <p>Ensure transparent, timely, and accurate communication at all levels of the incident and strengthen relationships with cooperators.</p>		
<b>General Situational Awareness:</b>		
Maintain situational awareness with fire behavior. Be clear on instructions received and given for assignments.		
<b>5. Site Safety Plan Required?</b> Yes <input type="checkbox"/> No <input checked="" type="checkbox"/>		
<b>Approved Site Safety Plan(s) Located at:</b>		
<b>6. Incident Action Plan</b> (the items checked below are included in this Incident Action Plan):		
<input checked="" type="checkbox"/> ICS 202 <input checked="" type="checkbox"/> ICS 203 <input checked="" type="checkbox"/> ICS 204 <input checked="" type="checkbox"/> ICS 205 <input type="checkbox"/> ICS 205A <input checked="" type="checkbox"/> ICS 206	<input type="checkbox"/> ICS 207 <input type="checkbox"/> ICS 208 <input checked="" type="checkbox"/> ICS 220 <input checked="" type="checkbox"/> Map/Chart <input checked="" type="checkbox"/> Weather Forecast/Tides/Currents	<b>Other Attachments:</b> <input checked="" type="checkbox"/> SAFETY MESSAGE <input checked="" type="checkbox"/> FINANCE MESSAGE <input checked="" type="checkbox"/> TENTATIVE DEMOB LIST <input checked="" type="checkbox"/> ICS 214 UNIT LOG
<b>7. Prepared by:</b> BENJAMAN GARRETT	<b>Position/Title:</b> PSCC (T)	<b>Signature:</b> 
<b>8. Approved by Incident Commander:</b>	<b>Name:</b> MARIS GABLIKS	<b>Signature:</b> 
ICS 202	<b>IAP Page</b>	<b>Date/Time:</b> 08/28/2025 2130

# ORGANIZATION ASSIGNMENT LIST (ICS 203)

<b>1. Incident Name:</b>		<b>2. Operational Period:</b> DAY	
COTTONWOOD PEAK		Date/Time From: 08/29/2025 0600 FRI	Date/Time To: 08/29/2025 2200 FRI
<b>3. Incident Commander(s) and Command Staff:</b>		SUPPORT SPECIALIST M. ERICKSON (T)	
INCIDENT COMMANDER	MARIS GABLIKS ; JOE ALYEA (T)	INCIDENT METEOROLOGIST	DEREK WILLIAMS L. ROGERS (T)
DEPUTY INCIDENT COMMANDER	CHRIS WOODS	<b>6. Logistics Section:</b>	
HUMAN RESOURCE SPECIALIST	GEORGIA BEDDOW	CHIEF	ADAM FISHER ; S. TORRES S. CARRIGAN (T)
SAFETY OFFICER	TERRY TRAPP ; T. FIELDEN	DEPUTY	GENE-PAUL MATSON ; T. PIPER
FIELD SAFETY	KENT GLAZER ; P. CHURCHILL J. BROLLIER ; G. VOLLHABER L. OSTERLAND ; M. RICE ; V. TAYLOR	FACILITIES UNIT	TIM GALLAGHER C. KOVALA (T) ; M. THORNING (T)
MEDICAL UNIT	AMBER JACKSON K. GAINER ; D. DENO	COMMUNICATIONS UNIT	PETER WILLIS S. MORTENSEN ; J. BLOME
INFORMATION OFFICER	CATHERINE KOELE ; K. NASH C. STELTER	SECURITY UNIT	RICHARD SCHUE ; L. STOFFEL (T)
LIAISON OFFICER	AARON KANIA ; C. MCCREEDY (T)	GROUND SUPPORT UNIT	KEN DELROSSI ; M. BAILEY
<b>4. Agency/Organization Representative(s):</b>		SUPPLY UNIT	BRYAN GALLAGHER
Agency/Organization	Name	ORDERING MANAGER	MIKE SMITH ; R. CROOMS (T)
LEAD AGENCY ADMINISTRATOR BLM	JARED BYBEE ; S. MCELDERY	FOOD UNIT	MIKE JOHNSON ; A. KENYON (T)
AGENCY ADMINISTRATOR NDF	MARCUS LESBO	RECEIVING/DISTRIBUTION	CHRIS STURM (T) ; A. COLE (T)
AGENCY ADMINISTRATOR USFS	JOSH NICHOLS ; G. SANCHEZ FMO H. FLORY (T) ; B. HATCH (T)	EQUIPMENT	STANLEY WESTON J. WELCH ; C. EGBERT ; C. PLOURDE B. RUFFENACH ; J. PALACIOS (T)
FIRE MANAGEMENT OFFICER BLM	CRAIG CUNNINGHAM	<b>7. Operations Section:</b>	
FIRE OPERATIONS COORDINATOR BLM	GLEN UHLIG	LEAD OPS SECTION CHIEF	CORY HENRY S. GRIMM
ELKO COUNTY FIRE ADMINISTRATOR	MATT PETERSEN	FIELD OPS SECTION CHIEF	JOHN NORTON-JENSEN
LEAD READ	HANNAH ROBINSON	PLANNING OPS CHIEF	BEN WAGNER P. GLOVER
LOCAL RANCHER LIAISON	SAM MORI	OPS SECTION CHIEF	KEVIN REESE (T)
COOPERATOR	MIGUEL DIAZ (CA-CCC)		
<b>5. Planning Section:</b>		BRANCH DIRECTOR I	ALLEN BRIGGS B. WOLVERT (T)
CHIEF	GLENN PALMGREN B. GARRETT (T) ; J. BURNHAM (T)	DIVISION/GROUP A	CHRIS FRANEK
DEPUTY	PETER FISCHER	DIVISION/GROUP E / G	GABRIEL TEMPLETON
RESOURCES UNIT	ILENE WADKINS ; S. KRAGE		
STATUS CHECK-IN	LESLEY PORTER ; G. VACCARO	BRANCH DIRECTOR II	BRIAN PISAREK
DEMOBILIZATION UNIT	PATTY COFFMAN	DIVISION/GROUP H / K	LUKE MACHO S. SOVINSKI (T)
DOCUMENTATION UNIT	MATT TONELLO	DIVISION/GROUP O / R	P. FOUNTAIN (T)
SITUATION UNIT	CHRIS MURSU ; T. SCHENK		
FIRE BEHAVIOR ANALYST	MIKE BOWDEN	BRANCH DIRECTOR III	KEITH MURPHY S. WOODBURY (T)
LONG TERM FIRE ANALYST	MATT MALESIC ; C. SCHMIEGE (T)	DIVISION/GROUP W	JEREMY KOLAKS
GIS SPECIALIST	PETER ROSE ; E. APALINSKI S. MCNEIL (T) ; H. TOOHEY (T) D. WELCHERT (T)	DIVISION/GROUP Z	BRIAN LEITINGER AJ COLEMAN (T)
INCIDENT TECHNOLOGY	BRUCE BOWEN ; S. JOHNSON		
<b>9. Prepared By:</b> Name: GIANNA VACCARO		Position/Title: RESL (T)	Signature:
ICS 203	IAP Page	Date/Time: 08/28/2025 1557	

## ORGANIZATION ASSIGNMENT LIST (ICS 203)

<b>1. Incident Name:</b>		<b>2. Operational Period:</b> <b>DAY</b>	
COTTONWOOD PEAK		Date/Time From: 08/29/2025 0600      FRI	Date/Time To: 08/29/2025 2200      FRI
DIVISION/GROUP	IA CONTINGENCY	ROBERT SHIELDS	
DIVISION/GROUP	REPAIR	WESLEY HATCH CURTIS WAYKA (T)	
PLANNING OPS		BEN WAGNER	
DIVISION/GROUP	STAGING	MATT WATSON E. WEBER (T)	
<b>7b. Air Operations Branch:</b>			
AIR OPS BRANCH DIRECTOR	MIKE KERRIGAN		
AIR SUPPORT SUPERVISOR	CALEB SCHREIBER		
<b>8. Finance/Administration Section:</b>			
CHIEF	MARY COLEMAN		
DEPUTY	PETER BERINGER		
PROCUREMENT UNIT	JENNIFER GALLAGHER (T)		
COST UNIT	DURINDA HULETT (T)		
COMPENSATION UNIT	LAUREN PRESCOTT		
TIME UNIT	ANN BACA ; C. MATTESON (T)		
EQUIPMENT TIME RECORDER	KIM FRIER ; D. EDELMAN ; C. WEBB (V) C. WEIKLE (V) ; I. ROBERTS (V) E. TRUJILLO (V)		
PERSONNEL TIME RECORDER	DENNIS WEIKLE (V) D. MCWILLIAMS (V) ; E. ANDERSON (T) A. LONG (T) ; T. DEVLIN (T)		
<b>9. Prepared By:</b>		<b>Position/Title:</b>	<b>Signature:</b>
Name: GIANNA VACCARO		RESL (T)	
ICS 203	IAP Page	Date/Time: 08/28/2025 1557	





## Fire Weather Forecast

**FORECAST NO:** 11  
**PREDICTION FOR:** Friday-Friday Night  
**DATE:** August 29<sup>th</sup>, 2025  
**FORECAST ISSUED:** 1800 August 28<sup>th</sup>, 2025

**Fire:** Cottonwood Peak  
**UNIT:** NV-EKD-010319  
**Incident Meteorologist:** Derek Williams  
**Signed:** *Derek Williams*

**WEATHER DISCUSSION:** Isolated showers and thunderstorms are expected to develop around 1200 across the area. However, rainfall intensity will be less than prior days owing to decreasing monsoon atmospheric moisture. Winds will be light and primarily terrain driven through late morning, with a light northeast component by the afternoon. Terrain driven winds could be disrupted by afternoon shower and thunderstorm activity. Drying in the lower levels of the atmosphere will support lower RH values this afternoon, reaching into the 20s in valleys after good recoveries this morning. Temperatures will continue an upward trend, reaching close to 80 in valleys by early afternoon.

**TODAY:** **WEATHER:** Partly cloudy in the morning. Isolated showers and thunderstorms after 1200. Gusty outflow winds in the vicinity of showers/thunderstorms.  
**MAX TEMP:** (5500ft): 76-79° **MIN RH: (5500ft):** 25-29%  
(7500ft): 68-71° **(7500ft):** 31-35%  
**INVERSION:** Shallow inversion lifting around 1130  
**20 FT WINDS:** **SLOPE/VALLEY:** Upslope/up-valley 2-4 mph developing late morning. North to northeast at 4-7 mph by afternoon in aligned valleys.  
**RIDGETOP:** Southeast at 2-4 mph in the morning, transitioning to the north at 6-9 mph by noon then northeast at 6-10 mph with gusts up to 14 mph by afternoon.  
**TRANSPORT WIND:** Northeast 5-8 mph. **INSTABILITY:** Moderate. Mixing heights 11,000 feet by 1200.  
**CHANCE THUNDER:** 25% **CHC OF ANY RAIN:** 35% **CHC RAIN =>0.10":** 8%

**TONIGHT:** **WEATHER:** Dissipating showers and clouds.  
**MIN TEMP:** (5500ft): 47-50° **MAX RH: (5500ft):** 60-65%  
(7500ft): 49-52° **(7500ft):** 50-55%  
**INVERSION:** Strengthening inversion.  
**20 FT WINDS:** **SLOPE/VALLEY:** Downslope/down-valley 3-5 mph.  
**RIDGETOP:** Northeast 5-8 mph in the evening, becoming east 4-7 mph after midnight.  
**TRANSPORT WIND:** Southeast around 10 mph.  
**CHANCE THUNDER:** 0% **CHC OF ANY RAIN:** 0% **CHC RAIN =>0.10":** 0%

**SATURDAY:** **WEATHER:** Clear in the afternoon. Partly cloudy by afternoon.  
**MAX TEMP:** (5500ft): 78-81° **MIN RH: (5500ft):** 18-22%  
(7500ft): 70-73° **(7500ft):** 23-27%  
**INVERSION:** Shallow inversion lifting around 1130.  
**20 FT WINDS:** **SLOPE/VALLEY:** Upslope/up-valley 2-4 mph with gusts to 12 mph by afternoon.  
**RIDGETOP:** East at 3-6 mph in the morning, transitioning to the north-northwest at 6-9 mph in the afternoon.  
**TRANSPORT WIND:** Southwest at 7-12 mph.  
**INSTABILITY:** Moderate. Mixing heights around 12,000 feet by 1300.  
**CHANCE THUNDER:** 5% **CHC OF ANY RAIN:** 5% **CHC RAIN =>0.10":** 0%

**EXTENDED OUTLOOK:** A warming and drying trend will continue into midweek along with light, primarily terrain-driven winds as high pressure builds over the Great Basin. Slight chances of high-based afternoon thunderstorms return Monday, lasting through midweek, but significant rainfall is not expected. Relative humidity will fall into the upper teens each day.



← **Submit Weather Observations** →



FIRE BEHAVIOR FORECAST	
FORECAST NUMBER: 12	INCIDENT TYPE: Wildfire
FIRE NAME: Cottonwood Peak	OPERATIONAL PERIOD: August 29, 2025 0600-2200
DATE ISSUED: August 28, 2025	TIME ISSUED: 1830
UNIT: NV-EKD	PREPARED BY: Matt Malesic FBAN(t)/Mike Bowden FBAN
<p align="center"><b>INPUTS</b></p> <p><b>WEATHER SUMMARY:</b> See detailed Fire Weather Forecast in IAP for more specifics  <b>Temp:</b> Daytime maximum 76-79 degrees, Nighttime lows 47-50 degrees.  <b>RH:</b> Minimum 25-29% during the day, increasing to 50-55% overnight.  <b>Wind (20 ft):</b> Day: N 6-9 mph with gusts to 14 mph. Night: NE 5-8 mph.</p> <p><b>FUELS &amp; FUEL MOISTURE:</b> The area affected has experienced limited fire activity over the past four decades. Fire spread mainly took place in short grass (GR2) and short grass/shrub (GS2) fuel types. Currently, the fire is smoldering within aspen timber stands (TL3/TU5). Drought-affected fuels had previously shown severe fire behavior due to historically low levels of live fuel moisture and considerable grass fuel buildup from above normal moisture in winter. Recent wet weather has resulted in notable increases in fuel moisture within fire area.</p>	
<p align="center"><b>OUTPUTS - FIRE BEHAVIOR</b></p> <p><b>GENERAL:</b>  Fire behavior will primarily involve smoldering due to suppression efforts and the damp, cool environment with good humidity recoveries overnight. Today and moving forward will provide better conditions for extinguishing any accessible heat.</p> <p><b>SPECIFIC:</b></p> <p><b>BRANCH I/II</b></p> <p><b>DIVS A/E/G/H/K</b> – Cold trailing fire edge and pulling back dozer berms to locate any residual heat that may not have been identified. The recent moisture, along with today's weather conditions, will aid in extinguishing any smoldering fuels present in the aspen stringers within Divisions E/G.</p> <p><b>DIVS O/R</b> – Expect smoldering in the high elevation fuels above Devil's Gap.</p> <p><b>BRANCH III</b></p> <p><b>DIVS W/Z</b> – Smoldering will continue in the timber stringers. Slight potential to find heat in dozer berms.</p> <p><b>Initial Attack</b> – Limited spread and low intensity can be expected on any new ignitions.</p>	
<p><b>AIR OPERATIONS:</b> Visibility may be impaired by any rain showers, inversion and fog.</p>	
<p><b>SAFETY:</b> Warmer and dryer weather will increase fire behavior potential compared to the past 3 shifts. When working in any timber stands, use caution with snags, rolling debris and root bases.</p>	

**Base all actions on current and expected fire behavior!**

# Safety Message

Incident:  
Cottonwood Peak

Date:  
8/29/2025

Shift:  
Day

## DOING REPETITIVE TASKS:

- When we do a task repetitively, we start to overlook small hazards that can cause big problems. And,
- When we “get away with” risky behavior, we start to think that we will always have a positive outcome.
  - Both of these tendencies can lead us to an accident or injury.

**No matter how repetitive or boring your assignment may be, remember that every day is a new opportunity to SEE small problems, ACT to prevent them from getting big, and COMMUNICATE within your crew and your supervisor.**

## ROADSIDE OPERATIONS

Exit vehicle from the passenger side and avoid exiting from traffic side if possible. Utilize “Look-First” Situational Awareness while loading and unloading vehicle. Assign a single person to unload equipment from the traffic side of vehicle and instruct him/her to face traffic flow. Emphasize the need for extreme caution and to look both ways when walking between or in front of parked vehicles toward active traffic lanes. Many fatalities to responders at roadside incidents have resulted from inattention or casual attitudes.

## Driving & Fatigue

- Make sure you are getting your rest when you can! Stick to work/rest guidelines.
- Fatigue can cause us to mentally stray from the driving task.
- It only takes a second of distraction to lose control of our vehicle. The faster you are traveling, the faster you get in trouble.
- Make sure you recognize when you are too tired to drive!
- Don't tough it out and put yourself and your passengers at risk!
- Slow down, take breaks, and talk to your passengers. If possible, keep an alert passenger in the front seat next to you. Know your limits.

### *Safety Officers*

**Easter Area Team Safety Group:** Kenneth Glazer (SOFC), Terry Trapp (SOFC), Tom Fielden (SOFC), Lee Osterland (SOFC), Greg Vollhaber (SOFC), Mike Rice (SOFC), Justin Broiler (SOFC), Paul Churchill (SOFC), Mike Janisse (SOFF), Chris Sweeney (SOFF), Erick Costello (SOFF), Amber Jackson (MEDL), Kurt Gainer (MEDL), Dave Deno (MEDL)

### *Contact Information*

**SAFETY & MEDICAL GROUP EMAIL:**

[2025.cottonwoodpeak.medical@firenet.gov](mailto:2025.cottonwoodpeak.medical@firenet.gov)

# Division/Group Assignment List (ICS 204 WF)

Controlled Unclassified Information//Basic

<b>1. Incident Name:</b>				<b>3.</b>			
COTTONWOOD PEAK				<b>Branch:</b>		<b>Division/Group:</b>	
<b>2. Operational Period:</b> DAY				I		A	
Date/Time From: 08/29/2025 0600 FRI		Date/Time To: 08/29/2025 2200 FRI					
<b>4. Operations Personnel</b>							
<b>OPERATIONS CHIEF</b>		JOHN NORTON-JENSEN		<b>BRANCH DIRECTOR</b>		ALLEN BRIGGS BRIAN WOLVERT (T)	
<b>DIVISION/GROUP SUPERVISOR</b>		CHRIS FRANEK		<b>SAFETY OFFICER</b>		JUSTIN BROLLIER	
<b>5. Resources Assigned this Period</b>							
Strike Team / Task Force / Resource Designator		LWD	Leader	Number Persons	Drop Off PT./Time	Pick Up PT./Time	
O-1 TFLD		08/29	PETER TRASK	1	ICP/0600	ICP/2200	
^O-67 TFLD		09/02	ERIC ANDERSON	1	ICP/0600	ICP/2200	
^O-275 TFLD		09/06	BENNIE TERRELL	1	ICP/0600	ICP/2200	
^E-20.12 TFLD (T)		09/01	COURTNEY MADIGAN	1	ICP/0600	ICP/2200	
^O-243 HEQB		09/05	WAYNE BRININGER	1	ICP/0600	ICP/2200	
^O-249 HEQB (T)		09/05	SHAWN MAY	1	ICP/0600	ICP/2200	
^C-35 CR2I RIFLE PEAK		09/03	JEFF ELLIS	20	ICP/0600	ICP/2200	
E-19 ENG6 ESB MANAGEMENT		08/29	DUSTIN SHOFFNER	3	ICP/0600	ICP/2200	
^E-20.3 ENG4 BLAZE RUNNERS 16		09/07	JERRY FUGATE	3	ICP/0600	ICP/2200	
^E-20.4 ENG4 FIRE SOLUTIONS		09/07	CRAIG FRAPP	3	ICP/0600	ICP/2200	
^E-20.5 ENG3 FIRECO		09/05	CHRIS HANSON	3	ICP/0600	ICP/2200	
^E-232 ENG3 CEDAR MOUNTAIN FD E75		09/03	SHAWN ADAMS	4	ICP/0600	ICP/2200	
^E-20.2 WTS2 OWEN EQUIPMENT AND TRUCK REPAIR		09/07	ROBERT OWEN	1	ICP/0600	ICP/2200	
<b>8. Division/Group Communication Summary</b>							
Function	Channel	RX Frequency N/W	RX Tone/NAC	TX Frequency N/W	TX Tone/NAC	Mode	
COMMAND	7	170.0000	136.5	166.6750	136.5	A	
COMMAND	8	170.6875	136.5	166.5750	136.5	A	
COMMAND	9	169.5375	136.5	164.7125	136.5	A	
COMMAND	10	173.0375	136.5	167.3250	136.5	A	
TACTICAL	1	168.0500	136.5	168.0500	136.5	A	
AIR TO GROUND	14	165.4500		165.4500		A	
<b>9. Prepared By (Resource Unit Leader)</b>		<b>Approved By (Planning Section Chief)</b>			<b>Date</b>	<b>Time</b>	
SUSAN KRAGE		BEN GARRETT (T)			08/28/2025	2000	

# Division/Group Assignment List (ICS 204 WF)

Controlled Unclassified Information//Basic

<b>1. Incident Name:</b>				<b>3.</b>			
COTTONWOOD PEAK				<b>Branch:</b>		<b>Division/Group:</b>	
<b>2. Operational Period:</b> DAY				I		A	
Date/Time From: 08/29/2025 0600 FRI		Date/Time To: 08/29/2025 2200 FRI					
<b>4. Operations Personnel</b>							
<b>OPERATIONS CHIEF</b>		JOHN NORTON-JENSEN		<b>BRANCH DIRECTOR</b>		ALLEN BRIGGS BRIAN WOLVERT (T)	
<b>DIVISION/GROUP SUPERVISOR</b>		CHRIS FRANEK		<b>SAFETY OFFICER</b>		JUSTIN BROLIER	
<b>5. Resources Assigned this Period</b>							
Strike Team / Task Force / Resource Designator		LWD	Leader		Number Persons	Drop Off PT./Time	Pick Up PT./Time
^E-20.7 DZR2 RANGE WATER SOLUTIONS		09/07	TYKUS HEATON		2	ICP/0600	ICP/2200
^E-224 DZR2 STEADMAN FENCING		09/05	TEE STEADMAN		2	ICP/0600	ICP/2200
^E-228 DZR2 BLACK OPERATIONS		09/04	RYAN MAKHAM		3	ICP/0600	ICP/2200
O-84 EMPF VALOR MEDICS		09/02	JIMMY VIRTO		1	ICP/0600	ICP/2200
O-269 EMPF CHL EMS INC		09/05	BROCK TAYLOR		1	ICP/0600	ICP/2200
E-241 VUTV SIERRA QUEEN RANGER						ICP/0600	ICP/2200
<b>6. Control Operations/Work Assignments:</b>							
<p>Task: Continue suppression repair operations in conjunction with assigned REAF and backhaul unneeded supplies. Maintain point protection plans and initiate actions around critical values at risks if weather or fire behavior dictates.</p> <p>Purpose: To protect life, property, habitat, and ranching infrastructure and resources.</p> <p>End state: The community of Tuscarora, geothermal plant, private ranches and hay caches are not directly impacted by fire. Fire impact to critical habitat/range/grazing/ allotments is kept as small as possible. District and private land suppression repair standards are met and identified organizational structure to support the incoming IMT is in place.</p>							
<b>7. Special Instructions:</b>							
<p>*Resources identified for initial attack. Refer to initial attack plan in IAP.</p> <p>Avoid dozer line construction within 100ft. of trout streams. Refer to the Resource Adviser insert in the IAP for daily information.</p> <p>REAFs floating across all Branches and Divisions:</p>							
<b>8. Division/Group Communication Summary</b>							
Function	Channel	RX Frequency N/W	RX Tone/NAC	TX Frequency N/W	TX Tone/NAC	Mode	
COMMAND	7	170.0000	136.5	166.6750	136.5	A	
COMMAND	8	170.6875	136.5	166.5750	136.5	A	
COMMAND	9	169.5375	136.5	164.7125	136.5	A	
COMMAND	10	173.0375	136.5	167.3250	136.5	A	
TACTICAL	1	168.0500	136.5	168.0500	136.5	A	
AIR TO GROUND	14	165.4500		165.4500		A	
<b>9. Prepared By (Resource Unit Leader)</b>		<b>Approved By (Planning Section Chief)</b>			<b>Date</b>	<b>Time</b>	
SUSAN KRAGE		BEN GARRETT (T)			08/28/2025	2000	



# Division/Group Assignment List (ICS 204 WF)

Controlled Unclassified Information//Basic

<b>1. Incident Name:</b>				<b>3.</b>			
COTTONWOOD PEAK				Branch:		Division/Group:	
<b>2. Operational Period:</b> DAY				I		A	
Date/Time From: 08/29/2025 0600 FRI		Date/Time To: 08/29/2025 2200 FRI					
<b>4. Operations Personnel</b>							
<b>OPERATIONS CHIEF</b>		JOHN NORTON-JENSEN		<b>BRANCH DIRECTOR</b>		ALLEN BRIGGS BRIAN WOLVERT (T)	
<b>DIVISION/GROUP SUPERVISOR</b>		CHRIS FRANEK		<b>SAFETY OFFICER</b>		JUSTIN BROLLIER	
<b>7. Special Instructions:</b>							
<p>O-7 Joy Wadsworth, O-251 Josh Vance.</p> <p>Specialty medical resources under direction of Branch Director: E-197 Ambo4.</p> <p>Validate 2 to 1 work rest standards.</p> <p>Complete all required documentation (shift tickets, evaluations, time, ect) in preparation for demob.</p> <p>^Resources staying with Type 3 IMT.</p>							
<b>8. Division/Group Communication Summary</b>							
Function	Channel	RX Frequency N/W	RX Tone/NAC	TX Frequency N/W	TX Tone/NAC	Mode	
COMMAND	7	170.0000	136.5	166.6750	136.5	A	
COMMAND	8	170.6875	136.5	166.5750	136.5	A	
COMMAND	9	169.5375	136.5	164.7125	136.5	A	
COMMAND	10	173.0375	136.5	167.3250	136.5	A	
TACTICAL	1	168.0500	136.5	168.0500	136.5	A	
AIR TO GROUND	14	165.4500		165.4500		A	
<b>9. Prepared By (Resource Unit Leader)</b>			<b>Approved By (Planning Section Chief)</b>			<b>Date</b>	
SUSAN KRAGE			BEN GARRETT (T)			08/28/2025	
						2000	

# Division/Group Assignment List (ICS 204 WF)

Controlled Unclassified Information//Basic

<b>1. Incident Name:</b>				<b>3.</b>		
COTTONWOOD PEAK				<b>Branch:</b>		<b>Division/Group:</b>
<b>2. Operational Period: DAY</b>				I		E/G
Date/Time From: 08/29/2025 0600 FRI		Date/Time To: 08/29/2025 2200 FRI				
<b>4. Operations Personnel</b>						
<b>OPERATIONS CHIEF</b>		JOHN NORTON-JENSEN		<b>BRANCH DIRECTOR</b>		ALLEN BRIGGS BRIAN WOLVERT (T)
<b>DIVISION/GROUP SUPERVISOR</b>		GABRIEL TEMPLETON		<b>SAFETY OFFICER</b>		JUSTIN BROLLIER
<b>5. Resources Assigned this Period</b>						
Strike Team / Task Force / Resource Designator		LWD	Leader	Number Persons	Drop Off PT./Time	Pick Up PT./Time
^O-61 TFLD		09/01	TRAVIS WILTSE	1	ICP/0600	ICP/2200
^O-277 TFLD		09/06	JOSH THALACKER	1	ICP/0600	ICP/2200
C-6 CRW1 AMERICAN RIVER IHC		08/30	MATTHEW RADTKE	22		
* C-8 CR2I UNIFIED SALT LAKE FIRE		08/29	LYLE JENNINGS	23	ICP/0600	ICP/2200
^C-33 CR2I NORTH PACIFIC FORESTRY		09/02	PABLO RAMOS	20	ICP/0600	ICP/2200
^C-34 CR2I ZEPHYR		09/03	MARK WAITE	20	ICP/0600	ICP/2200
E-134 DZR2 NVEKD 1806		08/29	JEREMIAH BRAUN	2	ICP/0600	ICP/2200
O-263 REMS 5 CASCADE MEDICAL TRANSPORT		09/06	GABE FREER	4	ICP/0600	ICP/2200
E-217 MESU 2 CASCADE MEDICAL TRANSPORT		09/03	EDWARD SEPULVEDA	2	ICP/0600	ICP/2200
E-162 VUTV ICE FIRE SUPPORT					ICP/0600	ICP/2200
E-163 VUTV ICE FIRE SUPPORT					ICP/0600	ICP/2200
E-165 VUTV ICE FIRE SUPPORT					ICP/0600	ICP/2200
E-169 VUTV 775					ICP/0600	ICP/2200
<b>8. Division/Group Communication Summary</b>						
Function	Channel	RX Frequency N/W	RX Tone/NAC	TX Frequency N/W	TX Tone/NAC	Mode
COMMAND	6	170.4125	136.5	165.9625	136.5	A
COMMAND	7	170.0000	136.5	166.6750	136.5	A
COMMAND	8	170.6875	136.5	166.5750	136.5	A
COMMAND	9	169.5375	136.5	164.7125	136.5	A
COMMAND	10	173.0375	136.5	167.3250	136.5	A
TACTICAL	2	168.2000	136.5	168.2000	136.5	A
AIR TO GROUND	14	165.4500		165.4500		A
<b>9. Prepared By (Resource Unit Leader)</b>		<b>Approved By (Planning Section Chief)</b>			<b>Date</b>	<b>Time</b>
SUSAN KRAGE		BEN GARRETT (T)			08/28/2025	2000

# Division/Group Assignment List (ICS 204 WF)

Controlled Unclassified Information//Basic

<b>1. Incident Name:</b>				<b>3.</b>			
COTTONWOOD PEAK				<b>Branch:</b>		<b>Division/Group:</b>	
<b>2. Operational Period:</b> DAY				I		E/G	
Date/Time From: 08/29/2025 0600 FRI		Date/Time To: 08/29/2025 2200 FRI					
<b>4. Operations Personnel</b>							
<b>OPERATIONS CHIEF</b>		JOHN NORTON-JENSEN		<b>BRANCH DIRECTOR</b>		ALLEN BRIGGS BRIAN WOLVERT (T)	
<b>DIVISION/GROUP SUPERVISOR</b>		GABRIEL TEMPLETON		<b>SAFETY OFFICER</b>		JUSTIN BROLLIER	
<b>5. Resources Assigned this Period</b>							
Strike Team / Task Force / Resource Designator		LWD	Leader	Number Persons	Drop Off PT./Time	Pick Up PT./Time	
E-239 VUTV OUTBACK FIREFIGHTING					ICP/0600	ICP/2200	
<b>6. Control Operations/Work Assignments:</b>							
<p>Task: Hold, mop up, and secure primary control line. Utilize current IR intelligence to focus areas of mop up. Utilize UTVs to address accessibility challenges. Continue suppression repair operations in conjunction with assigned REAF. Maintain point protection plans and initiate actions around critical values at risks if weather or fire behavior dictates.</p> <p>Purpose: To protect life, property, habitat, and ranching/grazing infrastructure and resources.</p> <p>End state: The community of Tuscarora, private ranches and hay caches are not directly impacted by fire. Fire impact to critical habitat/range/grazing allotments is kept as small as possible, District and private suppression repair standards are met and identified organizational structure to support the incoming IMT is in place.</p>							
<b>7. Special Instructions:</b>							
<p>*Resources identified for initial attack. Refer to initial attack plan in IAP.</p> <p>Avoid dozer line construction within 100ft. of trout streams. Refer to the Resource Adviser insert in the IAP for daily information.</p> <p>REAFs floating across all Branches and Divisions:</p> <p>O-7 Joy Wadsworth, O-251 Josh Vance.</p> <p>One crew will prepare to spike out.</p> <p>Specialty medical resources under direction of Branch Director: E-187 Ambo 4 and E-196 Ambo 6 (will respond to area covered by DIV G).</p> <p>Validate 2 to 1 work rest standards.</p> <p>Complete all required documentation (shift tickets, evaluations, time, etc) in preparation for demob.</p> <p>^Resources staying with Type 3 IMT.</p>							
<b>8. Division/Group Communication Summary</b>							
Function	Channel	RX Frequency N/W	RX Tone/NAC	TX Frequency N/W	TX Tone/NAC	Mode	
COMMAND	6	170.4125	136.5	165.9625	136.5	A	
COMMAND	7	170.0000	136.5	166.6750	136.5	A	
COMMAND	8	170.6875	136.5	166.5750	136.5	A	
COMMAND	9	169.5375	136.5	164.7125	136.5	A	
COMMAND	10	173.0375	136.5	167.3250	136.5	A	
TACTICAL	2	168.2000	136.5	168.2000	136.5	A	
AIR TO GROUND	14	165.4500		165.4500		A	
<b>9. Prepared By (Resource Unit Leader)</b>			<b>Approved By (Planning Section Chief)</b>			<b>Date</b>	<b>Time</b>
SUSAN KRAGE			BEN GARRETT (T)			08/28/2025	2000

**Controlled Unclassified Information//Basic**

# Division/Group Assignment List (ICS 204 WF)

Controlled Unclassified Information//Basic

<b>1. Incident Name:</b>				<b>3.</b>			
COTTONWOOD PEAK				<b>Branch:</b>		<b>Division/Group:</b>	
<b>2. Operational Period:</b> DAY				II		H/K	
Date/Time From: 08/29/2025 0600 FRI		Date/Time To: 08/29/2025 2200 FRI					
<b>4. Operations Personnel</b>							
<b>OPERATIONS CHIEF</b>		JOHN NORTON-JENSEN		<b>BRANCH DIRECTOR</b>		BRIAN PISAREK	
<b>DIVISION/GROUP SUPERVISOR</b>		LUKE MACHO STEVEN SOVINSKI (T)		<b>SAFETY OFFICER</b>		GREG VOLLHABER	
<b>6. Control Operations/Work Assignments:</b>							
land suppression repair standards are met and identified organizational structure to support the incoming IMT is in place.							
<b>7. Special Instructions:</b>							
<p>*Resources identified for initial attack. Refer to initial attack plan in IAP.</p> <p>Avoid dozer line construction within 100ft. of trout streams. Refer to the Resource Adviser insert in the IAP for daily information.</p> <p>REAFs floating across all Branches and Divisions:</p> <p>O-231 Travis Shoemaker</p> <p>Branch II ambo will cover for Branch I DIV G.</p> <p>Specialty medical resources under direction of Branch Director: E-215 Med Mod 3, E-196 Ambo 6.</p> <p>Validate 2 to 1 work rest standards.</p> <p>Complete all required documentation (shift tickets, evaluations, time, etc.) in preparation for demob.</p> <p>^Resources staying with Type 3 IMT.</p>							
<b>8. Division/Group Communication Summary</b>							
Function	Channel	RX Frequency N/W	RX Tone/NAC	TX Frequency N/W	TX Tone/NAC	Mode	
COMMAND	7	170.0000	136.5	166.6750	136.5	A	
COMMAND	8	170.6875	136.5	166.5750	136.5	A	
COMMAND	9	169.5375	136.5	164.7125	136.5	A	
COMMAND	10	173.0375	136.5	167.3250	136.5	A	
TACTICAL	1	168.0500	136.5	168.0500	136.5	A	
AIR TO GROUND	14	165.4500		165.4500		A	
<b>9. Prepared By (Resource Unit Leader)</b>		<b>Approved By (Planning Section Chief)</b>			<b>Date</b>	<b>Time</b>	
ILENE WADKINS		BEN GARRETT (T)			08/28/2025	2000	



Controlled Unclassified Information//Basic

1. Incident Name:				3.			
COTTONWOOD PEAK				Branch:  II		Division/Group:  O/R	
2. Operational Period: DAY							
Date/Time From: 08/29/2025 0600 FRI		Date/Time To: 08/29/2025 2200 FRI					
4. Operations Personnel							
OPERATIONS CHIEF		JOHN NORTON-JENSEN		BRANCH DIRECTOR		BRIAN PISAREK	
DIVISION/GROUP SUPERVISOR		PAUL FOUNTAIN (T)		SAFETY OFFICER		GREG VOLLHABER	
5. Resources Assigned this Period							
Strike Team / Task Force / Resource Designator		LWD	Leader	Number Persons	Drop Off PT./Time	Pick Up PT./Time	
^E-129 ENG3 NV B5231		09/03	JORDAN JAKE	4	ICP /0600	ICP/2200	
O-132 SOFF (T)		09/03	CHRIS SWEENEY	1	ICP /0600	ICP/2200	
6. Control Operations/Work Assignments:							
Task: Continue suppression repair operations in conjunction with assigned REAF and backhaul unneeded supplies. Maintain point protection plans and initiate actions around critical values at risks if weather or fire behavior dictates.							
Purpose: To protect life, property, habitat, and ranching infrastructure and resources.							
End State: The community of Tuscarora, geothermal plant, private ranches and hay caches are not directly impacted by fire. Fire impact to critical habitat/range/grazing/ allotments is kept as small as possible. District and private land suppression repair standards are met and identified organizational structure to support the incoming IMT is in place.							
7. Special Instructions:							
8. Division/Group Communication Summary							
Function	Channel	RX Frequency N/W	RX Tone/NAC	TX Frequency N/W	TX Tone/NAC	Mode	
COMMAND	7	170.0000	136.5	166.6750	136.5	A	
COMMAND	8	170.6875	136.5	166.5750	136.5	A	
COMMAND	9	169.5375	136.5	164.7125	136.5	A	
COMMAND	10	173.0375	136.5	167.3250	136.5	A	
TACTICAL	4	166.7250	136.5	166.7250	136.5	A	
AIR TO GROUND	14	165.4500		165.4500		A	
9. Prepared By (Resource Unit Leader)			Approved By (Planning Section Chief)			Date	Time
ILENE WADKINS			BEN GARRETT (T)			08/28/2025	2000

# Division/Group Assignment List (ICS 204 WF)

Controlled Unclassified Information//Basic

<b>1. Incident Name:</b>				<b>3.</b>			
COTTONWOOD PEAK				<b>Branch:</b>		<b>Division/Group:</b>	
<b>2. Operational Period:</b> DAY				II		O/R	
Date/Time From: 08/29/2025 0600 FRI		Date/Time To: 08/29/2025 2200 FRI					
<b>4. Operations Personnel</b>							
<b>OPERATIONS CHIEF</b>		JOHN NORTON-JENSEN		<b>BRANCH DIRECTOR</b>		BRIAN PISAREK	
<b>DIVISION/GROUP SUPERVISOR</b>		PAUL FOUNTAIN (T)		<b>SAFETY OFFICER</b>		GREG VOLLHABER	
<b>7. Special Instructions:</b>							
<p>*Resources identified for initial attack. Refer to initial attack plan in IAP.          Avoid dozer line construction within 100ft. of trout streams. Refer to the Resource Adviser insert in the IAP for daily information.          REAFs floating across all Branches and Divisions:          O-231 Travis Shoemaker, O-252 Jeff Jackson          Branch II AMBO will cover for Branch I DIV G.          Specialty medical resources under direction of Branch Director: E-215 Med Mod 3, E-196 AMBO 6.          Validate 2 to 1 work rest standards.          Complete all required documentation (shift tickets, evaluations, time, etc.) in preparation for demob.          ^Resources staying with Type 3 IMT.</p>							
<b>8. Division/Group Communication Summary</b>							
Function	Channel	RX Frequency N/W	RX Tone/NAC	TX Frequency N/W	TX Tone/NAC	Mode	
COMMAND	7	170.0000	136.5	166.6750	136.5	A	
COMMAND	8	170.6875	136.5	166.5750	136.5	A	
COMMAND	9	169.5375	136.5	164.7125	136.5	A	
COMMAND	10	173.0375	136.5	167.3250	136.5	A	
TACTICAL	4	166.7250	136.5	166.7250	136.5	A	
AIR TO GROUND	14	165.4500		165.4500		A	
<b>9. Prepared By (Resource Unit Leader)</b>		<b>Approved By (Planning Section Chief)</b>			<b>Date</b>	<b>Time</b>	
ILENE WADKINS		BEN GARRETT (T)			08/28/2025	2000	

# Division/Group Assignment List (ICS 204 WF)

Controlled Unclassified Information//Basic

<b>1. Incident Name:</b>				<b>3.</b>		
COTTONWOOD PEAK				<b>Branch:</b>		<b>Division/Group:</b>
<b>2. Operational Period: DAY</b>				III		W
Date/Time From: 08/29/2025 0600 FRI		Date/Time To: 08/29/2025 2200 FRI				
<b>4. Operations Personnel</b>						
<b>OPERATIONS CHIEF</b>		JOHN NORTON-JENSEN		<b>BRANCH DIRECTOR</b>		KEITH MURPHY SHAWN WOODBURY (T)
<b>DIVISION/GROUP SUPERVISOR</b>		^JEREMY KOLAKS		<b>SAFETY</b>		^MIKE RICE
<b>5. Resources Assigned this Period</b>						
Strike Team / Task Force / Resource Designator		LWD	Leader	Number Persons	Drop Off PT./Time	Pick Up PT./Time
^O-239 HEQB		09/08	CHRIS SEMANN	1	ICP/0600	ICP/2200
^O-240 HEQB (T)		09/08	WILLIAM WESTRICK	1	ICP/0600	ICP/2200
^E-175 DZR2 ALLENS WATER TENDER SERVICE		09/02	RICHARD ALLEN	1	ICP/0600	ICP/2200
O-116 SOFF		09/03	ERICK COSTELLO	1	ICP/0600	ICP/2200
O-264 REM2 CASCADE MEDICAL TRANSPORT		09/06	CAIT LUCIA	4	ICP/0600	ICP/2200
<b>6. Control Operations/Work Assignments:</b>						
<p>Task: Hold, mop up, and secure primary control line. Utilize current IR intelligence to focus areas of mop up. Continue suppression repair operations in conjunction with assigned REAF and backhaul unneeded supplies. Maintain point protection plans and initiate actions around critical values at risks if weather or fire behavior dictates.</p> <p>Purpose: To protect life, property, habitat, and ranching infrastructure and resources.</p> <p>End State: The community of Tuscarora, geothermal plant, private ranches, and hay caches are not directly impacted by fire. Fire impact to critical habitat/range/grazing/ allotments is kept as small as possible. District and private land suppression repair standards are met and identified organizational structure to support the incoming IMT is in place.</p>						
<b>8. Division/Group Communication Summary</b>						
Function	Channel	RX Frequency N/W	RX Tone/NAC	TX Frequency N/W	TX Tone/NAC	Mode
COMMAND	7	170.0000	136.5	166.6750	136.5	A
COMMAND	8	170.6875	136.5	166.5750	136.5	A
COMMAND	9	169.5375	136.5	164.7125	136.5	A
COMMAND	10	173.0375	136.5	167.3250	136.5	A
TACTICAL	5	166.7750	136.5	166.7750	136.5	A
AIR TO GROUND	14	165.4500		165.4500		A
<b>9. Prepared By (Resource Unit Leader)</b>		<b>Approved By (Planning Section Chief)</b>			<b>Date</b>	<b>Time</b>
ILENE WADKINS		BEN GARRETT (T)			08/28/2025	2000

# Division/Group Assignment List (ICS 204 WF)

Controlled Unclassified Information//Basic

<b>1. Incident Name:</b>				<b>3.</b>			
COTTONWOOD PEAK				<b>Branch:</b>		<b>Division/Group:</b>	
<b>2. Operational Period: DAY</b>				III		W	
Date/Time From: 08/29/2025 0600 FRI		Date/Time To: 08/29/2025 2200 FRI					
<b>4. Operations Personnel</b>							
<b>OPERATIONS CHIEF</b>		JOHN NORTON-JENSEN		<b>BRANCH DIRECTOR</b>		KEITH MURPHY SHAWN WOODBURY (T)	
<b>DIVISION/GROUP SUPERVISOR</b>		^JEREMY KOLAKS		<b>SAFETY</b>		^MIKE RICE	
<b>7. Special Instructions:</b>							
<p>*Resources identified for initial attack. Refer to initial attack plan in IAP.</p> <p>Avoid dozer line construction within 100ft. of trout streams. Refer to the Resource Adviser insert in the IAP for daily information.</p> <p>REAF floating across all Branches and Divisions:</p> <p>O-252 Jeff Jackson</p> <p>Specialty medical resources under direction of Branch Director: E-113 AMBO 3.</p> <p>Validate 2 to 1 work rest standards.</p> <p>Complete all required documentation (shift tickets, evaluations, time, etc.) in preparation for demob.</p> <p>^Resources staying with Type 3 IMT.</p>							
<b>8. Division/Group Communication Summary</b>							
Function	Channel	RX Frequency N/W	RX Tone/NAC	TX Frequency N/W	TX Tone/NAC	Mode	
COMMAND	7	170.0000	136.5	166.6750	136.5	A	
COMMAND	8	170.6875	136.5	166.5750	136.5	A	
COMMAND	9	169.5375	136.5	164.7125	136.5	A	
COMMAND	10	173.0375	136.5	167.3250	136.5	A	
TACTICAL	5	166.7750	136.5	166.7750	136.5	A	
AIR TO GROUND	14	165.4500		165.4500		A	
<b>9. Prepared By (Resource Unit Leader)</b>			<b>Approved By (Planning Section Chief)</b>			<b>Date</b>	
ILENE WADKINS			BEN GARRETT (T)			08/28/2025	
						2000	

# Division/Group Assignment List (ICS 204 WF)

Controlled Unclassified Information//Basic

<b>1. Incident Name:</b>				<b>3.</b>		
COTTONWOOD PEAK				<b>Branch:</b>		<b>Division/Group:</b>
<b>2. Operational Period: DAY</b>				III		Z
Date/Time From: 08/29/2025 0600 FRI		Date/Time To: 08/29/2025 2200 FRI				
<b>4. Operations Personnel</b>						
<b>OPERATIONS CHIEF</b>		JOHN NORTON-JENSEN		<b>BRANCH DIRECTOR</b>		KEITH MURPHY SHAWN WOODBURY (T)
<b>DIVISION/GROUP SUPERVISOR</b>		BRIAN LEITINGER AJ COLEMAN (T)		<b>SAFETY OFFICER</b>		^MIKE RICE
<b>5. Resources Assigned this Period</b>						
Strike Team / Task Force / Resource Designator	LWD	Leader	Number Persons	Drop Off PT./Time	Pick Up PT./Time	
^O-52 TFLD	09/03	STEPHEN SCHUMMER	1	ICP/0600	ICP/2200	
O-134 TFLD	09/02	TRISTAN JAMIESON	1	ICP/0600	ICP/2200	
C-10 CR2I ENA CREW 1	08/31	KARL STEPHENSON	22	ICP/0600	ICP/2200	
C-16 CRW2 ALTA PACIFIC FIRE FIGHTING	08/29	ADAM TORRES	20	ICP/0600	ICP/2200	
^E-127 ENG4 IDAHO TRAILBLAZERS 14-F65502	09/03	TANNER TODD	3	ICP/0600	ICP/2200	
^E-128 ENG4 IDAHO TRAILBLAZERS 24	09/06	JONATHAN HOAG	3	ICP/0600	ICP/2200	
E-138 ENG5 BRUSH 22 ELKO COUNTY FPD PATROL B-22	08/29	JAKE VALENA	2	ICP/0600	ICP/2200	
E-309 CHP2 RX FIRE EFFECTS	09/07	JOHN COLTER	3	ICP/0600	ICP/2200	
E-310 CHP2 PRO TEMPS	09/08	DANIEL BEACH	3	ICP/0600	ICP/2200	
^E-229 DZR2 PATHFINDER ENGINEERING INC	09/05	ROARK BROADIE	3	ICP/0600	ICP/2200	
O-100 SOFC	09/01	PAUL CHURCHILL	1	ICP/0600	ICP/2200	
O-116 SOFF (T)	09/03	ERICK COSTELLO	1	ICP/0600	ICP/2200	
<b>8. Division/Group Communication Summary</b>						
Function	Channel	RX Frequency N/W	RX Tone/NAC	TX Frequency N/W	TX Tone/NAC	Mode
COMMAND	7	170.0000	136.5	166.6750	136.5	A
COMMAND	8	170.6875	136.5	166.5750	136.5	A
COMMAND	9	169.5375	136.5	164.7125	136.5	A
COMMAND	10	173.0375	136.5	167.3250	136.5	A
TACTICAL	3	168.6000	136.5	168.6000	136.5	A
AIR TO GROUND	14	165.4500		165.4500		A
<b>9. Prepared By (Resource Unit Leader)</b>		<b>Approved By (Planning Section Chief)</b>		<b>Date</b>		<b>Time</b>
ILENE WADKINS		BEN GARRETT (T)		08/28/2025		2000



# Division/Group Assignment List (ICS 204 WF)

Controlled Unclassified Information//Basic

<b>1. Incident Name:</b>				<b>3.</b>			
COTTONWOOD PEAK				<b>Branch:</b>		<b>Division/Group:</b>	
<b>2. Operational Period:</b> DAY				III		Z	
Date/Time From: 08/29/2025 0600 FRI		Date/Time To: 08/29/2025 2200 FRI					
<b>4. Operations Personnel</b>							
<b>OPERATIONS CHIEF</b>		JOHN NORTON-JENSEN		<b>BRANCH DIRECTOR</b>		KEITH MURPHY SHAWN WOODBURY (T)	
<b>DIVISION/GROUP SUPERVISOR</b>		BRIAN LEITINGER AJ COLEMAN (T)		<b>SAFETY OFFICER</b>		^MIKE RICE	
<b>5. Resources Assigned this Period</b>							
Strike Team / Task Force / Resource Designator		LWD	Leader		Number Persons	Drop Off PT./Time	Pick Up PT./Time
O-76 EMPF ADVENTURE MEDICS		09/03	DREW GIBSON		1	ICP/0600	ICP/2200
E-168 VUTV OUTBACK RANGER						ICP/0600	ICP/2200
<b>6. Control Operations/Work Assignments:</b>							
<p>Task: Hold, mop up, and secure primary control line. Utilize current IR intelligence to focus areas of mop up. Continue suppression repair operations in conjunction with assigned REAF and backhaul unneeded supplies. Maintain point protection plans and initiate actions around critical values at risks if weather or fire behavior dictates. Masticate fuels along the Jack Creek Rd and other identified containment lines.</p> <p>Purpose: To protect life, property, habitat, and ranching infrastructure and resources.</p> <p>End State: The community of Tuscarora, geothermal plant, private ranches, and hay caches are not directly impacted by fire. Fire impact to critical habitat/range/grazing/ allotments is kept as small as possible. District and private land suppression repair standards are met and identified organizational structure to support the incoming IMT is in place.</p>							
<b>7. Special Instructions:</b>							
<p>*Resources identified for initial attack. Refer to initial attack plan in IAP.</p> <p>Avoid dozer line construction within 100ft. of trout streams. Refer to the Resource Adviser insert in the IAP for daily information.</p> <p>REAF floating across all Branches and Divisions:</p> <p>O-252 Jeff Jackson</p> <p>Specialty medical resources under direction of Branch Director: E-113 AMBO 3.</p> <p>Validate 2 to 1 work rest standards.</p> <p>Complete all required documentation (shift tickets, evaluations, time, etc.) in preparation for demob.</p> <p>^Resources staying with Type 3 IMT.</p>							
<b>8. Division/Group Communication Summary</b>							
Function	Channel	RX Frequency N/W	RX Tone/NAC	TX Frequency N/W	TX Tone/NAC	Mode	
COMMAND	7	170.0000	136.5	166.6750	136.5	A	
COMMAND	8	170.6875	136.5	166.5750	136.5	A	
COMMAND	9	169.5375	136.5	164.7125	136.5	A	
COMMAND	10	173.0375	136.5	167.3250	136.5	A	
TACTICAL	3	168.6000	136.5	168.6000	136.5	A	
AIR TO GROUND	14	165.4500		165.4500		A	
<b>9. Prepared By (Resource Unit Leader)</b>			<b>Approved By (Planning Section Chief)</b>			<b>Date</b>	
ILENE WADKINS			BEN GARRETT (T)			08/28/2025	
						2000	

**Controlled Unclassified Information//Basic**

1. Incident Name:				3.			
COTTONWOOD PEAK				Branch:		Division/Group:  IA CONTINGENCY	
2. Operational Period: DAY							
Date/Time From: 08/29/2025 0600 FRI		Date/Time To: 08/29/2025 2200 FRI					
4. Operations Personnel							
OPERATIONS CHIEF		JOHN NORTON-JENSEN		DIVISION/GROUP SUPERVISOR		^ROBERT SHIELDS	
AIR ATTACK SUPERVISOR							
5. Resources Assigned this Period							
Strike Team / Task Force / Resource Designator		LWD	Leader	Number Persons	Drop Off PT./Time	Pick Up PT./Time	
^E-258.14 TFLD		09/04	TOM WILSON	1	ICP/0600	ICP/2200	
^E-258.7 TFLD (T)		09/02	COLE LONG	1	ICP/0600	ICP/2200	
^E-258.13 HEQB (T)		09/03	MICHAL J ARENAS	1	ICP/0600	ICP/2200	
^E-258.8 ENG3 OUTBACK FIREFIGHTING		09/03	STEVE MAGNER	3	ICP/0600	ICP/2200	
^E-258.9 ENG3 SMOKIN RIDGE		09/03	FRED DEFFER	3	ICP/0600	ICP/2200	
^E-258.11 ENG3 OUTBACK FIREFIGHTING		09/04	KLIN HOLDAWAY	3	ICP/0600	ICP/2200	
^E-258.12 WTS2 KKS WATER SERVICE		09/02	MIKE WOOD	1	ICP/0600	ICP/2200	
^E-258.5 DZR2 JDB3 LLC		09/05	JED FLOYD	2	ICP/0600	ICP/2200	
^E-148 ENG5 CLEARWATER FIRE SUPPORT		09/02	MATTHEW SOARES	3	ICP/0600	ICP/2200	
^E-150 ENG6 TRI-STATE FIRE LLC		09/04	ISAIAH RUYBAL	3	ICP/0600	ICP/2200	
^E-287 WTT1 IDRCR ROCK CREEK RFPD		09/04	TIM DANIELS	2	ICP/0600	ICP/2200	
E-214 MED MOD 1 FRONT LINE EMS		09/03	PAUL RUIZ	2	ICP/0600	ICP/2200	
8. Division/Group Communication Summary							
Function	Channel	RX Frequency N/W	RX Tone/NAC	TX Frequency N/W	TX Tone/NAC	Mode	
COMMAND	7	170.0000	136.5	166.6750	136.5	A	
COMMAND	8	170.6875	136.5	166.5750	136.5	A	
COMMAND	9	169.5375	136.5	164.7125	136.5	A	
COMMAND	10	173.0375	136.5	167.3250	136.5	A	
AIR TO GROUND	14	165.4500		165.4500		A	
9. Prepared By (Resource Unit Leader)			Approved By (Planning Section Chief)		Date	Time	
SUSAN KRAGE			BEN GARETT (T)		08/28/2025	2000	

**Division/Group Assignment List (ICS 204 WF)**  
**Controlled Unclassified Information//Basic**

<b>1. Incident Name:</b>				<b>3.</b>			
COTTONWOOD PEAK				<b>Branch:</b>		<b>Division/Group:</b>	
<b>2. Operational Period:</b> DAY				<b>IA CONTINGENCY</b>			
Date/Time From: 08/29/2025 0600 FRI		Date/Time To: 08/29/2025 2200 FRI					
<b>4. Operations Personnel</b>							
<b>OPERATIONS CHIEF</b>		JOHN NORTON-JENSEN		<b>DIVISION/GROUP SUPERVISOR</b>		^ROBERT SHIELDS	
<b>AIR ATTACK SUPERVISOR</b>							
<b>5. Resources Assigned this Period</b>							
Strike Team / Task Force / Resource Designator		LWD	Leader		Number Persons	Drop Off PT./Time	Pick Up PT./Time
<b>6. Control Operations/Work Assignments:</b>							
Task: Be prepared to respond rapidly to new fire starts or surge resources to other divisions/group in need of assistance. Purpose: To protect life, property, habitat, and ranching infrastructure and resources. To keep new fires from getting established and escaping IA. End State: Private ranches, homes, and hay caches are not directly impacted by fire. Fire impact to critical range/grazing allotments, and sage grouse habitat is kept as small as possible.							
<b>7. Special Instructions:</b>							
*Resources identified for initial attack. Refer to initial attack plan in IAP. See Comm unit for additional IA Radio clone. Structure and Contingency groups are to use the tactical frequency assigned to the Division they are assisting. Avoid dozer line construction within 100ft. of trout streams. Refer to the Resource Adviser insert in the IAP for daily information. If resources from Nevada Task Force are to be used separate from task force, tie in with Resources for tracking. ^Resources staying with Type 3 IMT.							
<b>8. Division/Group Communication Summary</b>							
Function	Channel	RX Frequency N/W	RX Tone/NAC	TX Frequency N/W	TX Tone/NAC	Mode	
COMMAND	7	170.0000	136.5	166.6750	136.5	A	
COMMAND	8	170.6875	136.5	166.5750	136.5	A	
COMMAND	9	169.5375	136.5	164.7125	136.5	A	
COMMAND	10	173.0375	136.5	167.3250	136.5	A	
AIR TO GROUND	14	165.4500		165.4500		A	
<b>9. Prepared By (Resource Unit Leader)</b>			<b>Approved By (Planning Section Chief)</b>			<b>Date</b>	<b>Time</b>
SUSAN KRAGE			BEN GARETT (T)			08/28/2025	2000

# Division/Group Assignment List (ICS 204 WF)

Controlled Unclassified Information//Basic

<b>1. Incident Name:</b>				<b>3.</b>			
COTTONWOOD PEAK				<b>Branch:</b>		<b>Division/Group:</b>	
<b>2. Operational Period:</b> <b>DAY</b>							
Date/Time From: 08/29/2025 0600      FRI		Date/Time To: 08/29/2025 2200      FRI				<b>REPAIR GROUP</b>	
<b>4. Operations Personnel</b>							
<b>OPERATIONS CHIEF</b>		JOHN NORTON-JENSEN		<b>BRANCH DIRECTOR</b>			
<b>DIVISION/GROUP SUPERVISOR</b>		WESLEY HATCH CURTIS WAYKA (T)		<b>SAFETY OFFICER</b>		LEE OSTERLAND	
<b>5. Resources Assigned this Period</b>							
Strike Team / Task Force / Resource Designator		LWD	Leader	Number Persons	Drop Off PT./Time	Pick Up PT./Time	
O-161 TFLD		09/02	JEREMIAH L BALLIETT	1	ICP/0600	ICP/2200	
O-19 TFLD		09/01	RYAN J HERRERA	1	ICP/0600	ICP/2200	
O-136 TFLD (T)		09/02	GREGORY E NISSEN	1	ICP/0600	ICP/2200	
O-141 TFLD (T)		09/03	BRADLEY DUNCAN	1	ICP/0600	ICP/2200	
^E-105 WTS1 MARTY BROWN TRUCKING		09/08	BILLY COX	1	ICP/0600	ICP/2200	
^E-255 WTT1 FLAMECATCHERS		09/06	BRIDGER LARSEN	2	ICP/0600	ICP/2200	
^E-7 WTS2 CRIMSON SKY TRUCKING, LLC		09/02	SCOTT CLELLAND	1	ICP/0600	ICP/2200	
E-43 WTS2 DODGE BOYS		09/04	QUINTON FREDRICKSON	1	ICP/0600	ICP/2200	
^E-44 WTS2 ALPINE TRANSPORT INC		09/07	NEIL ROYER	1	ICP/0600	ICP/2200	
^E-45 WTS2 ALPINE TRANSPORT INC		09/07	JEREMY DICKEY	1	ICP/0600	ICP/2200	
^E-326 EXC2 BFC LIMITED, LLC		09/09	JAKE GIFFIN	2	ICP/0600	ICP/2200	
^E-327 EXC2 BLAZECORE		09/10	JEREMIAH JONES	2	ICP/0600	ICP/2200	
^E-328 EXC2 BFC LIMITED, LLC		09/10	DONNIE ENDICOTT	2	ICP/0600	ICP/2200	
^E-329 EXC2 BFC LIMITED, LLC		09/10	ADAM HEDLUND	2	ICP/0600	ICP/2200	
<b>6. Control Operations/Work Assignments:</b>							
<p>Task: Implement actions described in the suppression repair plan. Repair roads with grader and water tender combination. Knock down dozer berms and dig out drainage blocks.</p> <p>Purpose: Improve rangeland/user access and mitigate damage to critical habitat.</p> <p>End State: Meet suppression repair plan intent.</p>							
<b>8. Division/Group Communication Summary</b>							
Function	Channel	RX Frequency N/W	RX Tone/NAC	TX Frequency N/W	TX Tone/NAC	Mode	
COMMAND	7	170.0000	136.5	166.6750	136.5	A	
COMMAND	8	170.6875	136.5	166.5750	136.5	A	
COMMAND	9	169.5375	136.5	164.7125	136.5	A	
COMMAND	10	173.0375	136.5	167.3250	136.5	A	
AIR TO GROUND	14	165.4500		165.4500		A	
<b>9. Prepared By (Resource Unit Leader)</b>		<b>Approved By (Planning Section Chief)</b>			<b>Date</b>		<b>Time</b>
SUSAN KRAGE		GLENN PALMGREN			08/28/2025		2000

# Division/Group Assignment List (ICS 204 WF)

Controlled Unclassified Information//Basic

<b>1. Incident Name:</b>				<b>3.</b>			
COTTONWOOD PEAK				<b>Branch:</b>		<b>Division/Group:</b>	
<b>2. Operational Period: DAY</b>							
Date/Time From: 08/29/2025 0600 FRI		Date/Time To: 08/29/2025 2200 FRI				REPAIR GROUP	
<b>4. Operations Personnel</b>							
<b>OPERATIONS CHIEF</b>		JOHN NORTON-JENSEN		<b>BRANCH DIRECTOR</b>			
<b>DIVISION/GROUP SUPERVISOR</b>		WESLEY HATCH CURTIS WAYKA (T)		<b>SAFETY OFFICER</b>		LEE OSTERLAND	
<b>7. Special Instructions:</b>							
<p>Validate 2 to 1 work rest standards.          Complete all required documentation (shift tickets, evaluations, time, etc.) in preparation for demob.</p> <p>^Resources staying with Type 3 IMT.</p>							
<b>8. Division/Group Communication Summary</b>							
Function	Channel	RX Frequency N/W	RX Tone/NAC	TX Frequency N/W	TX Tone/NAC	Mode	
COMMAND	7	170.0000	136.5	166.6750	136.5	A	
COMMAND	8	170.6875	136.5	166.5750	136.5	A	
COMMAND	9	169.5375	136.5	164.7125	136.5	A	
COMMAND	10	173.0375	136.5	167.3250	136.5	A	
AIR TO GROUND	14	165.4500		165.4500		A	
<b>9. Prepared By (Resource Unit Leader)</b>			<b>Approved By (Planning Section Chief)</b>			<b>Date</b>	
SUSAN KRAGE			GLENN PALMGREN			08/28/2025	
						2000	

# Division/Group Assignment List (ICS 204 WF)

Controlled Unclassified Information//Basic

<b>1. Incident Name:</b>				<b>3.</b>			
COTTONWOOD PEAK				<b>Branch:</b>		<b>Division/Group:</b>	
<b>2. Operational Period:</b> <b>DAY</b>							
Date/Time From: 08/29/2025 0600                      FRI		Date/Time To: 08/29/2025 2200                      FRI				<b>STAGING</b>	
<b>4. Operations Personnel</b>							
<b>PLANNING OPS</b>		BEN WAGNER		<b>DIVISION/GROUP SUPERVISOR</b>		MATTHEW WATSON ERIC WEBER (T)	
<b>GROUP SUPERVISOR</b>				<b>AIR ATTACK SUPERVISOR</b>			
<b>5. Resources Assigned this Period</b>							
Strike Team / Task Force / Resource Designator		LWD	Leader		Number Persons	Drop Off PT./Time	Pick Up PT./Time
O-207 SOFC		08/29	BRETT GREGR		1	ICP/0600	ICP/2200
E-151 ENG5 EVEREST FIRE AUTHORITY		09/02	JUSTIN RIDDLE		3	ICP/0600	ICP/2200
<b>6. Control Operations/Work Assignments:</b>							
<b>Task:</b> Follow the demob process. <b>Purpose:</b> To facilitate orderly demobilization of multiple resources. <b>Endstate:</b> Resources demobilize as scheduled without causing significant delays to the entire demob process.							
<b>7. Special Instructions:</b>							
Validate 2 to 1 work rest standards. Complete all required documentation (shift tickets, evaluations, time, ect) in preparation for demob. ^Resources staying with Type 3 IMT.							
<b>8. Division/Group Communication Summary</b>							
Function	Channel	RX Frequency N/W	RX Tone/NAC	TX Frequency N/W	TX Tone/NAC	Mode	
COMMAND	7	170.0000	136.5	166.6750	136.5	A	
COMMAND	8	170.6875	136.5	166.5750	136.5	A	
COMMAND	9	169.5375	136.5	164.7125	136.5	A	
COMMAND	10	173.0375	136.5	167.3250	136.5	A	
TACTICAL	4	166.7250	136.5	166.7250	136.5	A	
AIR TO GROUND	14	165.4500		165.4500		A	
<b>9. Prepared By (Resource Unit Leader)</b>			<b>Approved By (Planning Section Chief)</b>			<b>Date</b>	<b>Time</b>
SUSAN KRAGE			BEN GARRETT			08/28/2025	2000



## AIR OPERATIONS SUMMARY (ICS 220 WF)

<b>1. Incident Name / Number</b> Cottonwood Peak NV-EKD-010319			<b>2. Date Prepared</b> 8/28/25	<b>3. Time Prepared</b> 1800	<b>4. Prepared By</b> Cory Ryan
<b>5. Sunrise</b> 06:08	<b>Sunset</b> 19:19	<b>Pumpkin Time</b> 19:49	<b>6. Shutdown</b> 19:39	<b>7. Operational Period - Date</b> 8/29/25	<b>8. Operational Period - Time</b> 0800-2200

<b>9. General Remarks, Safety Notes, Hazards, Air Operations Special Equipment, etc.</b>  (2) SEATs in Wells (2) SEATs in Battle Mtn. ,  ATGS can be ordered from Twin Falls, Id or Boise, ID V Med 28 used in medevac.	<b>10. Helibase Information</b>  Name: <div style="font-size: 1.2em; font-weight: bold; text-align: center;">Cottonwood</div> Latitude: 41 22.44 Longitude: 116 09.15	<b>11. Temp. Flight Restriction (TFR)</b>  NOTAM: 5/1500 Altitude: 12000 Frequency: 125.2250 Hours: 00:00-24:00
---	---	--

12. Extraction/Medevac Information			
	Medevac	Short-haul	Hoist
FAA#:			
Phone:			
Location:			
Capabilities			
Request Incident Personnel Extraction/Medevac Through: <div style="font-size: 1.1em; font-weight: bold;">Cottonwood Comm.</div>			

13. Incident Frequencies	RX	Tone	TX	Tone	AM/FM/Digital	14. Position	Name	Phone
A/A (TFR)	125.2250		125.2250		(A-16)	AOBD	Mike Kerrigan	716-957-4705
A/A Rotor	118.1500		118.1500		(A-20)	ASGS	Caleb Schreiber	715-628-6999
A/A Briefing/Handoff						HEBM	Jeremiah Grumbois	775-455-7140
A/G Primary	165.4500		165.4500		(A-21)	HLCO		
A/G Secondary	168.7375		168.7375		(A-22)	HEBMT	Mike Armstrong	775-934-5594
A/G Tactical						UAO	Melissa Fry	775-455-7131
DECK	163.1000		163.1000			ASGS	Cory Ryan	706-329-7578
VMed 28	155.3400		155.3400	156.7				

15. Equipment/Supplies
Helibase Trailer E-50

16. HELICOPTERS						
FAA #	TYPE	Make/Model	Helibase	Start	Avail.	Remarks
N519FF	3	AS350B3	Cottonwood	0800	0830	Hover STEP
N406AS	3	Bell 407	Cottonwood	0800	0830	

17. AERIAL SUPERVISION: AIR ATTACK/HELICOPTER COORDINATOR						
FAA #	Call Sign	Make/Model	Base	Start	Avail.	Remarks
						Av. Boise, ID
						Av. Twin Falls, ID

18. UNMANNED AIRCRAFT SYSTEMS (UAS)							
Identifier	Cat./Type	Make/Model	Location	Start	Avail.	Leader/Contact	Remarks

<b>1. Incident Name:</b>			<b>2. Date/Time Prepared:</b>			<b>3. Operational Period:</b>				
<b>Cottonwood Peak Fire</b>			Date: 8/27/2025 Time: 17:40			Date/Time From: 8/28/2025 06:00			Date/Time To: 8/29/2025 06:00	
<b>4. Basic Radio Channel Use:</b>										
Zone Group	Ch #	Function	Channel Name	Assignment	RX Freq	RX Tone/NAC	TX Freq	TX Tone/NAC	Mode (A,D, or M)	Remarks
	1	Tactical	TAC 1	Div A, Div H/K	168.0500	136.5	168.0500	136.5	A	Repair and Contingency groups are to use the tactical frequency assigned to the Division they are assisting.
	2	Tactical	TAC 2	Div E, DIV G	168.2000	136.5	168.2000	136.5	A	
	3	Tactical	TAC 3	Div Z	168.6000	136.5	168.6000	136.5	A	
	4	Tactical	TAC 4	Div R/O, Staging	166.7250	136.5	166.7250	136.5	A	
	5	Tactical	TAC 5	Div W	166.7750	136.5	166.7750	136.5	A	
	6	Command	SW Repeater	Command SW	170.4125	136.5	165.9625	136.5	A	Located SW of the fire. Best use Div G
	7	Command	CMD 7	Command-East	170.0000	136.5	166.6750	136.5	A	Located East of the fire
	8	Command	CMD 8	Command-South	170.6875	136.5	166.5750	136.5	A	Located South of fire
	9	Command	CMD 9	Command-North	169.5375	136.5	164.7125	136.5	A	Located North of fire
	10	Command	CMD 10	Command - NW	173.0375	136.5	167.3250	136.5	A	Located NW of the fire. Best use Div H/K
	11	Local CMD	JACKS		171.5375	110.9	163.5750	131.8	A	Emergency CMD only
	12	Local CMD	PENN		158.8950		151.2200	123.0	A	Emergency CMD only
	13	Air-Ground Ambulance	VMED 28	Air Ambulance	155.3400		155.3400	156.7	A	Air Evac
	14	Air-Ground	A/G PRI		165.4500		165.4500		A	
	15	Air-Ground	A/G SEC		168.7375		168.7375		A	
	16	AIR GUARD	AIRGUARD		168.6250		168.6250	110.9	A	
<b>5. Special Instructions:</b> Clone- Cotton W 8-25										
<b>6. Prepared By Name:</b> Jon Blome (Communications Unit Leader)							Signature: Jon Blome			
<b>Communication Phone # 925-532-5448</b>					Date/Time: 8/27/2025 17:40					

ALL INFORMATION CRITICAL SENSITIVE.



<b>1. Incident Name:</b>				<b>2. Date/Time Prepared:</b>			<b>3. Operational Period:</b>			
<b>Cottonwood Peak Fire- IA</b>				Date: 8/27/2025 Time: 11:10			Date/Time From: 08/28/2025 06:00		Date/Time To: 08/29/2025 06:00	
<b>4. Basic Radio Channel Use:</b>										
Zone Group	Ch #	Function	Channel Name	Assignment	RX Freq	RX Tone/NAC	TX Freq	TX Tone/NAC	Mode (A,D, or M)	Remarks
	1	Command	JACKS		171.5375	110.9	163.5750	131.8	A	
	2	Command	KNOLL		171.5375	110.9	163.5750	110.9	A	
	3	Command	MIDAS		171.5375	110.9	163.5750	156.7	A	
	4	Command	NDF PENN		158.8950		151.2200	123.0	A	
	5	Command	NDF DEER		158.8950		151.2200	103.5	A	
	6	Command	NDF KNOLL		158.8950		151.2200	131.8	A	
	7	Command	FS MERRIT		169.9000	192.8	164.1375	123.0	A	
	8	Command	FS DEER		169.9000	192.8	164.1375	131.8	A	
	9	Tactical	NV TAC2		164.4750	114.8	164.4750	114.8	A	
	10	Tactical	NDF RED1		159.3450	192.8	159.3450	192.8	A	
	11	Tactical	NDF RED2		158.8650	192.8	158.8650	192.8	A	
	12	Tactical	NDF RED3		172.3750	192.8	172.3750	192.8	A	
	13	Tactical	BLM SOA		171.6750	114.8	171.6750	114.8	A	
	14	Air - Ground	EKD A/G8		166.8750		166.8750		A	
	15	Air - Ground	EKDA/G49		168.0375		168.0375		A	
	16	AIR GUARD	AIRGUARD		168.6250		168.6250	110.9	A	
<b>5. Special Instructions:</b> Clone- ELKO N IA										
<b>6. Prepared By Name:</b> (Communications Unit Leader (trainee)) Jon Blome								Signature: Jon Blome		
								Date/Time: 8/27/2025 11:10		

ALL INFORMATION CRITICAL SENSITIVE.

### **Initial Attack Responsibility and Procedures.**

The Cottonwood Peak Fire is responsible for initial attack on all lands on the Cottonwood IA Map.

Resources with an asterisk on ICS204s are identified as potential IA resources and should download the IA map and be prepared to be self-sufficient for 24 hours.

#### **IA Request within the IMT's IA responsibility area:**

- Elko Dispatch and/or duty officer will contact the following and provide fire information:
  - During day shift from 0600 – 2200:
  - PRIMARY POC DAY: Planning Ops Ben Wagner 231-342-8004
  - ALTERNATE POC DAY: Lead Ops Cory Henry 906-280-4144
  - During night shift from 2200-0600:
  - PRIMARY POC NIGHT: Night Ops Via Radio
  - ALTERNATE POC NIGHT: Planning Ops Ben Wagner 231-342-8004
- Planning/night ops will confirm new fire location and then contact field ops (day shift).
- Field ops/night ops will contact OPBDs to muster pre-identified IA resources and designate a reporting location and IA group IC/POC.
- IA group IC/POC will confirm with field/night ops when accountability for assigned resources is established.
- For multiple starts field/night ops will prioritize responses.
- A local incident organizer with required fire report information will be completed and sent to Elko dispatch up through the IMT.
- Primary IA communications:
  - All initial attack size-up, additional resource requests, and IWI traffic will go through “Cottonwood communications”
  - Alternate communications is to go through Elko Dispatch, who will relay to cottonwood communications: 925-532-5448 – Cottonwood Commo Phone
- Communications will contact field/night ops to coordinate any additional resource needs for IA, planning ops will coordinate with field ops (day shift).
- Boundary Fires: If available, Cottonwood aircraft will take initial action on Cottonwood frequencies. If unavailable, Elko BLM aircraft will take initial action on their frequencies. Duty officer and Planning Ops will coordinate this.

#### **For IA requests outside the IA responsibility area:**

- Elko dispatch or duty officer contacts Planning/night ops with request including:
  - Number & type of resources requested (ground or air, etc)
  - Incident location
  - Frequencies
  - POC on scene
- Planning ops coordinates with field & air ops to answer the request
- IMT resources responding to the IA report size-up, ordering needs, and IWI traffic through Elko dispatch.

# **COTTONWOOD PEAK DEMOB PROCESS**

## **ALL RESOURCES MUST FOLLOW**

If assigned to staging today, you will be demobilized tomorrow

(take this time to complete all CTRs, shift tickets, contract forms and evaluations)

**In order to facilitate an expedient demob process please follow the steps below in order.**

1. “E” resources report to weed wash station to pick up ICS 221 (checkout form), then proceed to step 3.
2. “C” and “O” resources report to demob tent to pick up ICS 221 (checkout form), then proceed to step 3.
3. Report to Weed Wash and receive ticket (will not be admitted to weed wash without ICS 221)
4. Report to Ground Support
5. Report to Supply Unit
6. Report to Communications Unit
7. Report to Finance to close out with Finance
8. Report to Demob unit to submit completed ICS 221

**Tentative Release Demob List**  
**Incident: COTTONWOOD PEAK US-NV-EKD-010319**  
**08/29/2025 - 08/31/2025**

**Time to be to**  
**Weed Wash**

**08/29/2025**

**CREWS**

0700	C-4	CRW2	ROCHA REFORESTATION
0730	C-18	CRW2	ALPINE SERVICES
0800	C-20	CRW2	ANCHOR POINT REFORESTATION

**EQUIPMENT**

0830	E-20.1	ENG4	CLEARWATER FIRE SUPPORT E-42
0845	E-31	ENG6	AXCESS FIRE
0900	E-32	WTS2	BLAZECORE
0915	E-40	DZR2	ROWBERRY TRUCKING
1000	E-43	WTS2	DODGE BOYS
1015	E-116	STK2	LITTLE ROME ENTERPRISES
1030	E-154	ENG5	GCT LAND MANAGEMENT
1045	E-171	DZR2	CATE LAND INDUSTRIES
1130	E-182	ENG4	NVEKD E1441
1145	E-216	MESU	BEST PRACTICE MEDICINE
1300	E-219	WTT1	DBS ULTIMATE OFF ROAD
1315	E-324	GRD2	EMPIRE CAT
1345	E-325	GRD2	EMPIRE CAT
N/A	E-46	POT2	TREASURE VALLEY FIRE
N/A	E-102	HND2	A&N ENTERPRISES
N/A	E-218	ARF1	WILD WEST CRASH RESCUE SERVICE
N/A	E-273	PUP1	ASPEN STORAGE PROPERTIES

**OVERHEAD**

1415	O-15.15	PIOC	CODY NORRIS
1430	O-15.16	PIOC	TIM WEBB
1445	O-25	DIVS	ELLIOT KRENKA
1500	O-101	PIOC	STEVE LONG
1515	O-108	SITL	CASSANDRA JEAN DEMILLO
1530	O-181	SOFC	RICK M MCCONNELL
1545	O-207	SOFC	BRETT GREGR
1600	O-294	HEQB	BRIAN CARROLL
1615	O-298	TFLD	CHAD NICKOLS
1630	O-244	HEQB	RONALD BEAM
1645	O-245	HEQB	WILLIAMD STRONG

**08/30/2025**

**CREWS**

C-6	CRW1	AMERICAN RIVER IHC
C-8	CR2I	UNIFIED SALT LAKE FIRE AUTHORITY
C-10	CR2I	ENA CREW 1
C-16	CRW2	ALTA PACIFIC FIREFIGHTING

**EQUIPMENT**

E-19	ENG6	ESB MANAGEMENT
E-40	DZR2	ROWBERRY TRUCKING
E-134	DZR2	NVEKD 1806
E-138	ENG5	BRUSH 22 ELKO COUNTY FPD PATROL B-22
E-179	DZR2	UPPER VALLEY CONTRACTING
E-206	REF2	ROADWAY COMPANY
E-210	HND1	PERIDOT SVCS
E-229	DZR2	PATHFINDER ENGINEERING
E-278	GWT1	NORTHSTATE HEAVY EQUIPMENT RENTAL

**OVERHEAD**

O-1	TFLD	PETER TRASK
O-7	REAF	ESTELLA JOY WADSWORTH
O-15.13	PIOC	CECILE MARIA STELTER
O-15.14	PIOC	KIM ALAN NASH
O-19	TFLD	RYAN J HERRERA
O-144	HEQB	JOHN SIGMON KITTRELL
O-207	SOFC	BRETT GREGR

**08/31/2025**

**CREWS**

C-21	CRWC	SHOPAI CAMP CREW 2
------	------	--------------------

**EQUIPMENT**

E-7	WTS2	CRIMSON SKY TRUCKING
E-50	HOSU	OUTBACK FIREFIGHTING

**OVERHEAD**

O-15.10	MEDL	KURT GAINER
O-15.34	PSCC	PETER FISCHER
O-15.54	COML	PETER WILLIS
O-15.57	SECM	RICHARD SCHUE
O-15.60	SPUL	BRYAN GALLAGHER
O-15.61	ORDM	RHODEN CROOMS

O-15.64	RCDM	CHRISTOPHER STURM
O-33	LSCC	SHAWN TORRES
O-36	INCM	JOZEF DROZDOWSKI
O-44	RCDM	AARON COLE
O-160	RADO	TRACY FIFAREK
O-173	ORDM	MICHAEL SMITH
O-205	RADO	ANTHONY CIARAMITARO
O-208	RADO	MELISSA DAWN COGGINS
O-209	RADO	MACY CURNOW
O-230	RADO	ALLIE LANDRITH

## Cottonwood Peak

[2025.cottonwoodpeak.finance@firenet.gov](mailto:2025.cottonwoodpeak.finance@firenet.gov)

If you have any finance questions, please  
call us at: 775-800-7231

\*\*\*\*\*

Submit shift tickets and CTRs at least every two days.

Include email address, phone number, division and resource  
number on all documentation submitted.

Overhead Check-In Needs (email all to finance email):

Resource Order

If applicable:

Rental agreement

Casual Hire Form

Cooperator agreement

Equipment Check-In Needs (email all to finance email):

Contract

Pre-inspection

Resource Order

Travel Shift Ticket (signed by OPS if needed)

\*Please make sure to include your resource order number on your CTRs and Shift Tickets and  
in the subject line of all emails.

For assistance with any CLAIMS, Illness or Injury documentation issues please call us at: 775-800-  
7231



QR code links to electronic forms, how to videos, and finance email links.

## Example CTRs and STs

[illegible]

Make sure CTR is signed by incident supervisor

EMERGENCY EQUIPMENT SHIFT TICKET						RESOURCE ORDER # E-xx	
NOTE: The responsible Government Officer will update this form each day or shift and make initial and final equipment inspections.							
1. AGREEMENT NUMBER Current Agmt # (1269R6xxxxxx)				2. CONTRACTOR (name) Vendor Name			
3. INCIDENT OR PROJECT NAME Willamette Complex		4. INCIDENT NUMBER 000xxx		5. OPERATOR (name) Onsite Operator			
6. EQUIPMENT MAKE Ford		7. EQUIPMENT MODEL F550		8. OPERATOR FURNISHED BY <input checked="" type="checkbox"/> Contractor <input type="checkbox"/> Government			
9. SERIAL NUMBER Last 6 of VIN		10. LICENSE NUMBER XXXXX		11. OPERATING SUPPLIES FURNISHED BY <input checked="" type="checkbox"/> Contractor <input type="checkbox"/> Government			
12. DATE MO/DA/YR	13. EQUIPMENT USE		14. REMARKS (released, down time and cause, problems, etc)				
	START	STOP	HRS/DAYS/MILES				
			WORK	SPECIAL			
07/23/0204	0800	1200	4	Examples: Mileage start/finish Transport Retained 555-867-5309 john.doe@smokey.com			
				15. EQUIPMENT STATUS <input type="checkbox"/> a. Inspected and under agreement <input type="checkbox"/> b. Released by Government <input type="checkbox"/> c. Withdrawn by Contractor			
				16. INVOICE POSTED BY (Recorder's Initials)			
17. CONTRACTOR'S OR AUTHORIZED AGENT'S SIGNATURE Contractor Signature				18. GOVERNMENT OFFICER'S SIGNATURE Incident Supervisor signature		19. DATE SIGNED 07/24/24	

NSN 7540-01-119-5626  
50267-102

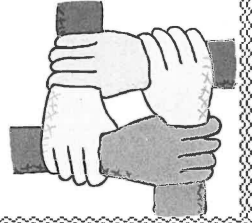
OPTIONAL FORM 267 (Rev. 7-90)  
USDA/USFS

Make sure both signatures are completed





## Human Resource Message



**I encourage you to keep finding the good within yourself and others!**

**WHAT DID YOU DO?????**

**IF YOU SEE SOMEONE DO A GOOD JOB OR IF YOU DID A GOOD JOB LET US KNOW!**

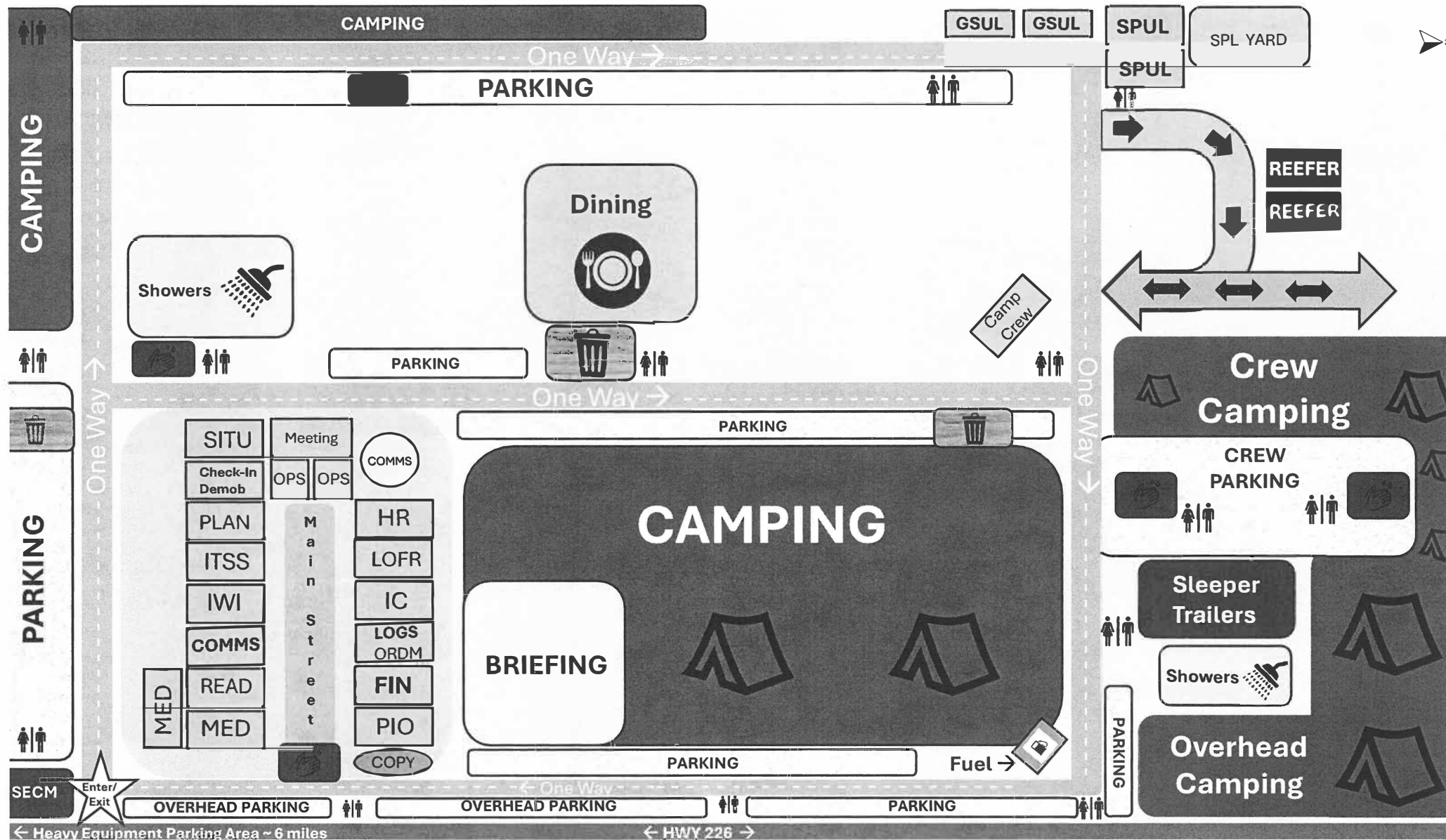
1. Who?
2. What?

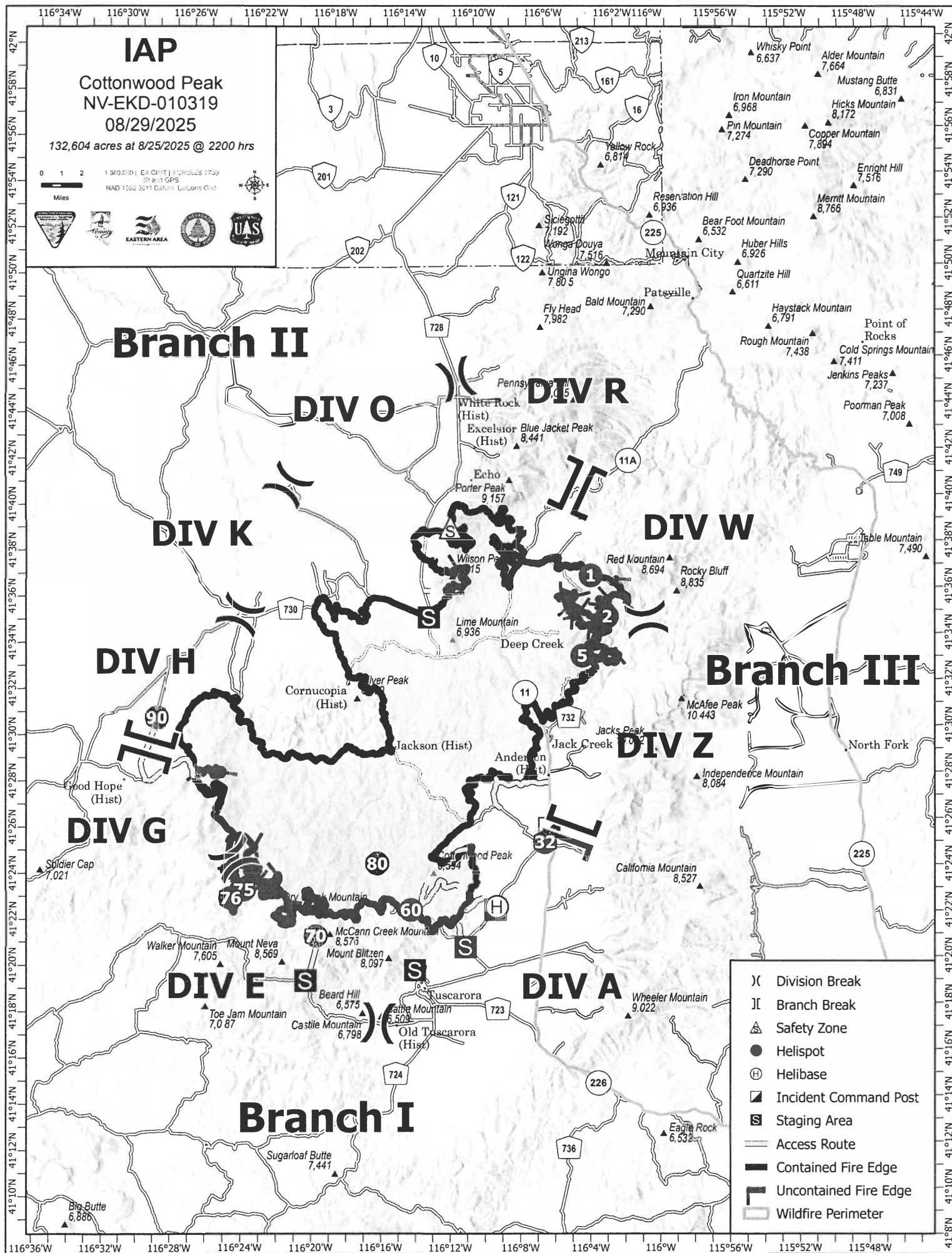
**Please turn this into the Human Resources tent. Thank you!**

**Georgia Beddow-Human Resources  
304-886-4676**

<b>Resource Advisor</b>	<b>Incident Name</b> <b>Cottonwood Peak Fire</b>	<b>Date/Time Prepared</b> <b>August 26, 2025</b> <b>1500</b>	<b>Prepared by</b> <b>Hannah Robinson</b>
	<b>Operational Period</b> <b>August 28, 2025 (0600 - 2200)</b>		
<b>Staffing</b>	<b>Name</b>	<b>Assignment/Division</b>	<b>Contact</b>
	Hannah Robinson	ICP	Radio & cell: 435-253-3706
	Jeff Jackson	R/W/Z	Radio & cell: 541-551-0104
	Josh Vance	A/E	Radio & cell: 304-516-3105
	Joy Wadsworth (T)	A/E	Radio & cell: 775-962-2022
	Travis Shoemaker	G/H/K/O	Radio & cell: 775-530-5764
	Kyla Sharp (T)	ICP	Radio & cell: 775-400-3426
<b>RESOURCE OBJECTIVES &amp; OPERATIONAL EMPHASIS</b>			
<p><b>FIELD MAPS</b></p> <ul style="list-style-type: none"> <li>Track all repairs in the 2025 Cottonwood Peak Suppression Repair Map by changing completed repairs, awaiting REAF inspection, to <b>Completed – Ready for Inspection</b> in the <b>Repair Status tab</b> of the feature.</li> <li><b>Please also add notes to the mode of repair (i.e. hand crew or dozer) in the Repair Comments tab.</b></li> </ul> <p><b>HERITAGE/CULTURAL RESOURCES</b></p> <ul style="list-style-type: none"> <li>Protect cultural resources.</li> </ul> <p><b>WILDLIFE HABITAT</b></p> <ul style="list-style-type: none"> <li>Avoid negatively impacting sage grouse habitat.</li> </ul> <p><b>NOXIOUS WEEDS</b></p> <ul style="list-style-type: none"> <li>Limit the spread of noxious and invasive weed species. Identify and map in Field Maps using the Invasive Plant event point to prevent further spread of weeds.</li> </ul> <p><b>SUPPRESSION REPAIR</b></p> <ul style="list-style-type: none"> <li>Repair suppression related impacts on the fire.</li> </ul>			
<b>RESOURCE PROTECTION STANDARDS</b>			
<b>Heritage &amp; Cultural – Standards</b>			<b>Division/Area</b>
✓ All cultural resources are protected. <u>Please leave them in place – no collecting.</u> Please coordinate with the REAFs if cultural resources are found.			All
<b>Wildlife Habitat – Standards</b>			
✓ Avoid disturbing the remaining islands of sagebrush and aspen.			All
✓ <b>DOZER LINE: Coordinate with REAFs previous to attempting repair work on the dozer line.</b>			All
<b>Noxious Weeds – Standards</b>			
✓ <b>WEED WASH:</b> All resources arriving to and demobilizing from the fire will go through the weed wash before leaving the incident.			All
<b>Suppression Repair - Standards</b>			
✓ GENERAL: Follow the suppression repair standards provided by the Resource Advisors (Division Supervisors have a copy of this document) and as outlined below. Limit further soil disturbance. ✓ NEW DOZER LINES: <ul style="list-style-type: none"> <li>Knock down berms and scatter associated material outside of the bladed area. Re-contour as possible.</li> <li>Discourage off-road travel on dozer lines by ripping the soil or placing boulders, logs, or other natural features on dozer lines where they tie into established roads for 100 feet.</li> <li>Remove material from ephemeral drainages. Avoid pushing sediment into draws, wet areas, or waterways.</li> <li>If it is determined that water bars are necessary to prevent soil loss or slow potential debris flow, the water bars should be placed on steeper slopes to limit erosion. Water bars should be angled so as to funnel surface run-off into unburned terrain where applicable. <b>WORK WITH THE REAFS TO DETERMINE IF WATER BARS ARE NECESSARY.</b></li> <li>Scatter brush that are piled along dozer lines to prevent the creation of slash piles.</li> </ul> ✓ DOZER LINES ON EXISTING ROADS: <ul style="list-style-type: none"> <li>Restore original road width.</li> <li>Pull back berm material and brush to side of road or trail.</li> </ul> ✓ HANDLINE <ul style="list-style-type: none"> <li>Remove “cup trenches” on perimeter line.</li> </ul>			All

<ul style="list-style-type: none"> <li>○ As possible, pull back berms, topsoil, and organic debris to blend with adjacent undisturbed ground.</li> <li>✓ SLASH PILES <ul style="list-style-type: none"> <li>○ Disperse slash piles along roads and other features to limit the concentration of fuels.</li> </ul> </li> <li>✓ FENCES <ul style="list-style-type: none"> <li>○ Repair fences cut in the course of suppression activities.</li> </ul> </li> <li>✓ GENERAL INCIDENT AREA CLEANUP <ul style="list-style-type: none"> <li>○ Remove all incident generated litter, trash, flagging.</li> <li>○ Return all designated equipment to local ICP or Cache.</li> </ul> </li> </ul>	
--	--





## ACTIVITY LOG (ICS 214)

[illegible]



# MEDICAL PLAN (ICS 206 WF)

Incident/Project Name				Operational Period							
<b>Cottonwood Peak</b>				<b>Date:</b> August 29, 2025, 0600-2200 Day							
ICP Location: 41° 25' 743" N, 116° 6' 138" W											
Ground Ambulance											
Elko County EMS		729 13 <sup>th</sup> St, Elko, NV 89801		Dial 911		ALS					
Air Ambulance											
Name		Phone		Type of Aircraft							
Medx Air One		911		Rotary Aircraft							
Reach Medical		911		Rotary and Fixed Wing							
University of Utah Airmed		911		Rotary Wing							
Hospitals											
Name Complete Address		GPS Datum – WGS 84 DD° MM.MMM' N – Lat DD° MM.MMM' W – Long		Travel Time from ICP Air      Ground		Phone		Helipad Yes   No		Level of Care Facility	
<b>Northeastern Nevada Regional Hospital</b> 2001 Errecart Blvd Elko, NV 89801		Lat	40 49.465N	15 min	75 min	775-748-2190	X NV20			Level 3 Antivenom Blood	
		Long	115 43.798W								
<b>University of Utah Hospital</b> 50 Medical Dr N Salt Lake City, UT 84132		Lat	43 36.817N	60 min	4 hrs	801-581-2121	X ID91			Level 1 Burn Center Antivenom	
		Long	116 5.687W								
<b>Saint Alphonsus</b> 1055 N Curtis Rd Boise, ID 83706		Lat	36 09.585N	60 min	4 hrs	208-367-3223	X NV34			Level 2 Antivenom	
		Long	115 09.962W								
**Travel times are from the incident and DO NOT include response time to the incident. **Air ETA are from point of dispatch											
<b>ICP</b>		EMS Responders & Capability			E-264 Ambo						
		Equipment available on Scene			ALS Ambulance						
		ETA for Ambulance to Scene			Ground 60 Minutes, air 30 minutes minimum						
		Medical Emergency Channel			Command 7/8, vmed28 for air med extraction						
		Helispots			Helispot 32 41°25.138'N 116° 6.394'W Helibase 41°22.357'N 116° 9.164'W						
<b>Staging</b>		EMS Responders & Capability			Unstaffed						
		Equipment available on Scene			Unstaffed						
		ETA for Ambulance to Scene			Ground 60 Minutes, air 30 minutes minimum						
		Medical Emergency Channel			Command 7/8, vmed28 for air med extraction						
		Helispots			Helibase 41°22.357'N 116° 9.164'W						
<b>Repair Group</b>		EMS Responders & Capability			Unstaffed						
		Equipment available on Scene			Unstaffed						
		ETA for Ambulance to Scene			Ground 60 Minutes, air 30 minutes minimum						
		Medical Emergency Channel			Command 7/8, vmed28 for air med extraction						
		Helispots			Helibase 41°22.357'N 116° 9.164'W						
<b>Contingency/IA</b>		EMS Responders & Capability			E-214 Med Mod 1						
		Equipment available on Scene			ALS Kit						
		ETA for Ambulance to Scene			Ground 60 Minutes, air 30 minutes minimum						
		Medical Emergency Channel			Command 7/8, vmed28 for air med extraction						
		Helispots			Helibase 41°22.357'N 116° 9.164'W						
<b>Branch I</b> Div A/E/G		EMS Responders & Capability			O-269 Medic Taylor, O-84 Medic Virto, O-263 REMS 5, E-217 Med Mod 2, E-197 Ambo 4, E-196 Ambo 6 (will also respond to Branch I-G)						
		Equipment available on Scene			ALS Kit, ALS Ambulance						
		ETA for Ambulance to Scene			Ground 60 Minutes, air 30 minutes minimum						
		Medical Emergency Channel			Command 7/8, vmed28 for air med extraction						
		Helispots			Helispot 60 41°22.270'N 116°14.093'W Helispot 60 41°22.370'N 116°14.093'W Helispot 70 41°21.167'N 116°19.566'W Helibase 41°22.357'N 116° 9.164'W						



# MEDICAL PLAN (ICS 206 WF)

<b>Branch II DIV H/K/O/R</b>	EMS Responders & Capability	E-215 Med Mod 3, E-196 Ambo 6 (will also respond to Branch I-G)
	Equipment available on Scene	ALS Kit, ALS Ambulance, Type 1 REM
	ETA for Ambulance to Scene	Ground 60 Minutes, air 30 minutes minimum
	Medical Emergency Channel	Command 7/8, vmed28 for air med extraction
	Helispots	Helispot 90 41°30.715'N 116°28.532'W Helibase 41°22.357'N 116° 9.164'W
<b>Branch III DIV W/Z</b>	EMS Responders & Capability	O-76 Medic Gibson, O-264 REMS 6, E-113 Ambo 3
	Equipment available on Scene	ALS Kit, ALS Ambulance
	ETA for Ambulance to Scene	Ground 60 Minutes, air 30 minutes minimum
	Medical Emergency Channel	Command 7/8/9, vmed28 for air med extraction
	Helispots	Helispot 1 41°36.675'N 116°03.589'W Helispot 2 41°34.893'N 116°02.684'W Helibase 41°22.357'N 116°9.164'W
<b>Helibase</b>	EMS Responders & Capability	O-81 Medic Poulsen
	Equipment available on Scene	ALS Kit
	ETA for Ambulance to Scene	Ground 60 Minutes, air 30 minutes minimum
	Medical Emergency Channel	Command 7/8, vmed28 for air med extraction

<u>LINE "MEDICAL-EMERGENCY" PLAN:</u>	<u>LINE "NON-EMERGENCY INCIDENT" PLAN:</u>
<p><b>Identify on-scene incident commander by name and position and announce: "MEDICAL EMERGENCY" to initiate response from IMT Communications/Dispatch.</b></p> <p>Provide:</p> <ul style="list-style-type: none"> <li>· Patient Complaint, Condition and Location via Tactical or Command frequency.</li> <li>· Priority 1/Red &amp; 2/Yellow patients trigger Incident within Incident (IWI).</li> <li>· Gather information and document on the Medical Incident Report (8-line) form.</li> </ul> <p>Division Supervisor/Operation contacts Communications/Dispatch Division Supervisor or POC* will run "Medical Emergency" on the command frequency.</p> <p>POC* (Point of Contact) and/or Operations</p> <ul style="list-style-type: none"> <li>• Frequencies and name of ground contact (if hoist)</li> <li>• Method of ground signal to aircraft if night operations (headlamp, strobe, flare, etc)</li> <li>• Lat/long of extraction site (DDD, MM.MMM)</li> <li>• Other Known aircraft operating on or near incident</li> </ul>	<p>Crew Supervisor to contact Division Supervisor with:</p> <ul style="list-style-type: none"> <li>· Patient Complaint, Condition and Location via Tactical or Command frequency.</li> <li>· Priority 3/Green, (Minor) Patients do not trigger Incident within Incident (IWI), unless there is a potential of it being upgraded to yellow or red.</li> <li>· Division Supervisor to contact MEDL through Comms or directly:</li> <li>· Division Supervisor or POC* will use the "Medical Incident Report" worksheet on the back of this page or back of IRPG.</li> <li>· Communications contacts Medical Unit Leader on the Command frequency or cell phone 916-628-5549 (For medical related incidents only).</li> </ul>

<b>Prepared by (Medical Unit Leader)</b>	<b>Date/Time</b>	<b>Approved by (Safety Officer)</b>	<b>Date/Time</b>
Amber Jackson MEDL	08/28/2025 1730	Terry Trapp SOFC	08/28/2025 1730

Medical Incident Report					
<b>FOR A NON-EMERGENCY INCIDENT, WORK THROUGH CHAIN OF COMMAND TO REPORT AND TRANSPORT INJURED PERSONNEL AS NECESSARY.</b>					
<b>FOR A MEDICAL EMERGENCY: IDENTIFY ON-SCENE INCIDENT COMMANDER BY NAME AND POSITION AND ANNOUNCE "MEDICAL EMERGENCY" TO INITIATE RESPONSE FROM IMT COMMUNICATIONS/DISPATCH.</b>					
<b>Use the following items to communicate situation to communications/dispatch.</b>					
<b>1. CONTACT COMMUNICATIONS / DISPATCH (Verify correct frequency prior to starting report) Ex: "Communications, Div. Alpha. Stand-by for Emergency Traffic."</b>					
<b>2. INCIDENT STATUS: Provide incident summary (including number of patients) and command structure.</b> Ex: "Communications, I have a Red priority patient, unconscious, struck by a falling tree. Requesting air ambulance to Forest Road 1 at (Lat./Long.) This will be the Trout Meadow Medical, IC is TFLD Jones. EMT Smith is providing medical care."					
Severity of Emergency / Transport Priority	<input type="checkbox"/> <b>RED / PRIORITY 1</b> Life or limb threatening injury or illness. Evacuation need is <b>IMMEDIATE</b> Ex: Unconscious, difficulty breathing, bleeding severely, 2° – 3° burns more than 4 palm sizes, heat stroke, disoriented. <input type="checkbox"/> <b>YELLOW / PRIORITY 2</b> Serious Injury or illness. Evacuation may be <b>DELAYED</b> if necessary Ex: Significant trauma, unable to walk, 2° – 3° burns not more than 1-3 palm sizes. <input type="checkbox"/> <b>GREEN / PRIORITY 3</b> Minor Injury or illness. Non-Emergency transport Ex: Sprains, strains, minor heat-related illness. <input type="checkbox"/> <b>Purple/Other</b> Non Medical other potential critical incidents Ex: Unaccounted for incident resources, threats to employees, chemical spills, incidents not requiring the use of ICS-206 but requiring IMT response				
Nature of Injury or Illness & Mechanism of Injury			Brief Summary of Injury or Illness (Ex: Unconscious, Struck by Falling Tree)		
Evacuation Request			Air Ambulance / Short Haul/Hoist Ground Ambulance / Other		
Patient Location			Descriptive Location & Lat. / Long. (WGS84)		
Incident Name			Geographic Name + Medical (Ex: Trout Meadow Medical)		
On-Scene Incident Commander			Name of on-scene IC of Incident within an Incident (Ex: TFLD Jones)		
Patient Care			Name of Care Provider (Ex: EMT Smith)		
<b>3. INITIAL PATIENT ASSESSMENT: Complete this section for each patient as applicable (start with the most severe patient)</b>					
Patient Assessment: See IRPG PAGE 106					
Treatment:					
<b>4. EVACUATION PLAN:</b>					
Evacuation Location (if different): (Descriptive Location (drop point, intersection, etc.) or Lat. / Long.) Patient's ETA to Evacuation Location:					
Helispot / Extraction Site Size and Hazards:					
<b>5. ADDITIONAL RESOURCES / EQUIPMENT NEEDS:</b>					
Example: Paramedic/EMT, crews, immobilization devices, AED, oxygen, trauma bag, IV/fluid(s), splints, rope rescue, wheeled litter, HAZMAT, extrication					
<b>6. COMMUNICATIONS: Identify State Air/Ground EMS Frequencies and Hospital Contacts as applicable</b>					
Function	Channel Name/Number	Receive (RX)	Tone/NAC *	Transmit (TX)	Tone/NAC *
COMMAND					
AIR-TO-GRND					
TACTICAL					
<b>7. CONTINGENCY: <u>Considerations:</u> If primary options fail, what actions can be implemented in conjunction with primary evacuation method? Be thinking ahead..</b>					
<b>8. ADDITIONAL INFORMATION: Updates/Changes, etc.</b>					
<b>REMEMBER: Confirm ETAs of resources ordered. Act according to your level of training. Be Alert. Keep Calm. Think Clearly. Act Decisively.</b>					