

INCIDENT ACTION PLAN

GAP FIRE

Monday, July 14th - Tuesday July 15th 2025

0600-2200

UT-SCS-250209

PN S542 (1532)



Check-in, Finance, IAPs, Maps



Send CTRS to: 2025.gap.finance@firenet.gov

INCIDENT OBJECTIVES (ICS 202)

1. Incident Name:		2. Operational Period: DAY	
GAP		Date/Time From: 07/14/2025 0600 MON	Date/Time To: 07/15/2025 2200 TUE
3. Objective(s): <ul style="list-style-type: none">• Firefighter and public safety• Protect the Community of Scipio, including all infrastructure and water resources• Keep fire East of HWY 50, West of Japanese Valley, North of Japanese Valley/Lone Cedar Rd., and South of 2007 Lowrys Fire Scar.• Maintain and develop relationships with key stake holders and the general public through providing timely and accurate information for the duration of the incident.			
4. Operational Period Command Emphasis: <ul style="list-style-type: none">• Keep Fire within containment lines where they exist.• Identify, map, and continue suppression repair,• Maintain positive relationships and continue to engage with the community.			
General Situational Awareness: <ul style="list-style-type: none">• Form an organization of professionals to develop strategies and tactics to work towards successful completion of incident objectives.• Do not take actions in terrain where firefighter risk is high and risk to values is low.• Follow best management practices to prevent damage to high value cultural and natural resources.			
5. Site Safety Plan Required? Yes <input type="checkbox"/> No <input checked="" type="checkbox"/>			
Approved Site Safety Plan(s) Located at:			
6. Incident Action Plan (the items checked below are included in this Incident Action Plan): <div><div><input checked="" type="checkbox"/> ICS 202 <input checked="" type="checkbox"/> ICS 203 <input checked="" type="checkbox"/> ICS 204 <input checked="" type="checkbox"/> ICS 205 <input type="checkbox"/> ICS 205A <input checked="" type="checkbox"/> ICS 206</div><div><input type="checkbox"/> ICS 207 <input type="checkbox"/> ICS 208 <input type="checkbox"/> ICS 220 <input checked="" type="checkbox"/> Map/Chart <input checked="" type="checkbox"/> Weather Forecast/Tides/Currents</div><div>Other Attachments: <input type="checkbox"/> <input type="checkbox"/> <input type="checkbox"/> <input type="checkbox"/></div></div>			
7. Prepared by: BRIAN MONROE		Position/Title: PSC3 (T)	Signature:
8. Approved by Incident Commander:		Name: BRYCE MONROE	Signature:
ICS 202		IAP Page	Date/Time: 07/13/2025 0000

ORGANIZATION ASSIGNMENT LIST (ICS 203)

1. Incident Name:		2. Operational Period: DAY	
GAP		Date/Time From: 07/14/2025 0600 MON	Date/Time To: 07/15/2025 2200 TUE
3. Incident Commander(s) and Command Staff:			
IC/UC	BRYCE MONROE COPELAND ANDERSON (T)		
SAFETY OFFICER			
INFORMATION OFFICER	KYLEE STOTT		
4. Agency/Organization Representative(s):			
Agency/Organization	Name		
WEST DESERT BLM	CINDY LEDBETTER		
UTAH STATE FFSL	TOM PETERSON		
READ	BRIK DAVENPORT 435-253-2025 ERIC READ		
7. Operations Section:			
OPS SECTION CHIEF			
DIVISION/GROUP	A		
DIVISION/GROUP	Z		
9. Prepared By:		Position/Title:	Signature:
Name: BRIAN MONROE		PSC3 (T)	
ICS 203	IAP Page	Date/Time:	
		07/13/2025 0840	

.WEATHER DISCUSSION...

Heat will continue to increase over the fire area alongside dry afternoon conditions as high pressure builds over Utah. Afternoon highs will be reaching into the upper-90s on Monday and right around 100 on Tuesday. There is a chance for isolated high-based showers in the region both Monday and Tuesday afternoon, which may bring potential for gusty and erratic outflow winds in excess of 30-40 mph. The probability for these outflows will be higher on Tuesday. Outside of any outflows, winds are expected to remain terrain driven during the overnight and early morning hours before taking on a west to northwest flow on Monday, then to an increasingly breezy west to southwest flow on Tuesday. Poor overnight recoveries are expected each day, with areas outside of valley bottoms recovering between 25-30 percent. Poor recoveries into Tuesday morning paired with the hot temperatures, very dry afternoon conditions, and breezy southwest winds will generate elevated to near critical fire weather conditions.

.MONDAY...

Sky/weather.....Mostly sunny (10-20 percent cloud cover).
CWR.....0 percent.
Chance of pcpn.....10 percent.
Chance of lightning.5 percent.
Max temperature.....97-99.
Min humidity.....8-10 percent.
Wind (20 ft).....Terrain driven (downslope) 3-7 mph in the morning, becoming west to northwest 6-11 mph in the late morning/ early afternoon.
Mixing height.....15500 ft AGL
Climatology.....97-99th Percentile.
Transport winds.....East around 7 mph becoming west around 15 mph in the afternoon.

.MONDAY NIGHT...

Sky/weather.....Mostly clear (15-25 percent cloud cover).
CWR.....0 percent.
Chance of pcpn.....0 percent.
Chance of lightning.4 percent.
Min temperature.....66-68.
Max humidity.....24-26 percent outside of the valley bottom. Around 45% at the valley bottom.
Wind (20 ft).....Northwest winds 6-10 mph becoming terrain driven (downslope) 4-7 mph overnight.
Transport winds.....Northwest around 14 mph becoming south around 8 mph overnight.

.TUESDAY...

Sky/weather.....Partly cloudy (30-40 percent cloud cover) then becoming mostly sunny (20-30 percent cloud cover).
CWR.....0 percent.
Chance of pcpn.....15 percent.
Chance of lightning.10 percent.
Max temperature.....Around 100.
Min humidity.....10-12 percent.
Wind (20 ft).....Terrain driven (downslope) 4-7 mph in the morning becoming west to southwest 10-14 mph with around 20 mph in the afternoon. Gusty and erratic winds expected near thunderstorms/ high-based showers.
Mixing height.....16600 ft AGL
Climatology.....99-100th Percentile.
Transport winds.....Southwest 14 to 22 mph.

.TUESDAY NIGHT...

Sky/weather.....Mostly clear (20-30 percent cloud cover).
CWR.....0 percent.
Chance of pcpn.....10 percent before 2200, then 0 percent.
Chance of lightning.5 percent before 2200, then 0 percent.
Min temperature.....64-67.
Max humidity.....31-35 percent on lower slopes and above. Around 50% at the valley bottom.
Wind (20 ft).....West to southwest winds 9-13 mph with gusts to around 18-20 mph before 2100, then becoming terrain driven (downslope) 4-7 mph.
Transport winds.....West to southwest around 12-15 mph

Division/Group Assignment List (ICS 204 WF)

Controlled Unclassified Information//Basic

1. Incident Name:				3.			
GAP				Branch:		Division/Group:	
2. Operational Period: DAY				A			
Date/Time From: 07/14/2025 0600 MON		Date/Time To: 07/15/2025 2200 TUE					
4. Operations Personnel							
OPERATIONS CHIEF				DIVISION/GROUP SUPERVISOR			
AIR ATTACK SUPERVISOR							
5. Resources Assigned this Period							
Strike Team / Task Force / Resource Designator	LWD	Leader	Number Persons	Drop Off PT./Time	Pick Up PT./Time		
C-2 CR2I WEBER BASIN	07/15	GREG GAMERTSFELDER	22				
E-6002 ENG6 NORTH FORK BR211	07/15	BOO CRANDALL	3				
E-6003 ENG6 SD E622	07/15	JAMES BACHELOR	6				
E-6008 WT1 MENDON FD	07/15	CASEY LEISHMAN	1				
6. Control Operations/Work Assignments:							
Secure fire edge. Seeking opportunities for direct control lines. Cold trail, hot spots when possible.							
7. Special Instructions:							
*= resources designated for initial attack							
8. Division/Group Communication Summary							
Function	Channel	RX Frequency N/W	RX Tone/NAC	TX Frequency N/W	TX Tone/NAC	Mode	
TACTICAL	1	166.5000		166.5000			
COMMAND	12	172.4375		166.0000	146.2		
AIR TO GROUND	13 (A/G 18)	168.0125		168.0125			
AIR TO GROUND	14 (A/G 21)	168.1500		168.1500			
AIR GUARD	17	155.3400		155.3400	156.7		
9. Prepared By (Resource Unit Leader)		Approved By (Planning Section Chief)			Date	Time	
BRIAN MONROE		BRYCE MONROE			07/13/2025	0923	

Division/Group Assignment List (ICS 204 WF)
Controlled Unclassified Information//Basic

1. Incident Name:				3.			
GAP				Branch:		Division/Group: <div style="text-align: center; font-weight: bold; font-size: 1.2em;">Z</div>	
2. Operational Period: DAY							
Date/Time From: 07/14/2025 0600 MON		Date/Time To: 07/15/2025 2200 TUE					
4. Operations Personnel							
OPERATIONS CHIEF				DIVISION/GROUP SUPERVISOR			
5. Resources Assigned this Period							
Strike Team / Task Force / Resource Designator		LWD	Leader	Number Persons	Drop Off PT./Time	Pick Up PT./Time	
E-6005 ENG3 NORTH FORK E213		07/15	STEVEN HILL	5			
E-6006 ENG3 UWOC E213		07/15	TYRUS OKINISHI	5			
6. Control Operations/Work Assignments: Secure fire edge. Seeking opportunities for direct control lines. Cold trail, hot spots when possible.							
7. Special Instructions: *= resources designated for initial attack							
8. Division/Group Communication Summary							
Function	Channel	RX Frequency N/W	RX Tone/NAC	TX Frequency N/W	TX Tone/NAC	Mode	
TACTICAL	2	166.9625		166.9625			
COMMAND	12	172.4375		166.0000	146.2		
AIR TO GROUND	13 (A/G 18)	168.0125		168.0125			
AIR TO GROUND	14 (A/G 21)	168.1500		168.1500			
AIR GUARD	17	155.3400		155.3400	156.7		
9. Prepared By (Resource Unit Leader)		Approved By (Planning Section Chief)			Date	Time	
BRIAN MONROE		BRYCE MONROE			07/13/2025	0000	

HEALTH AND SAFETY MESSAGE

SAFETY starts with ***YOU***

We are ALL accountable for SAFE behaviors

INCIDENT: Gap Fire

Day Operations: July 14-15 , 2025

Major Hazards and Risks: Steep, Rugged terrain; Snags, Stump holes and Weakened Green Trees; Road/Driving conditions, Dry/Hot weather, Wildlife and Insects; Dehydration/Heat Related Illness.

10, 18, and LCES In Place, Every Time: Re-evaluate as you progress, and as conditions warrant.

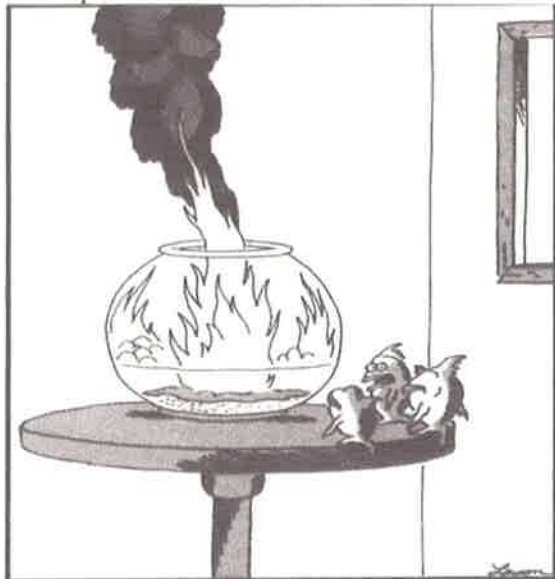
COMPLACENCY: Accept personal responsibility for your actions.....set the standard!!!

Cumulative Fatigue: Monitor those around you for hydration and cumulative fatigue, especially at higher elevations. Drink 4-6 quarts of fluids each operational period.

Risk Management: In the *IRPG* pg. 1.

Common Denominators of Fire Behavior on Tragedy Fires

- On relatively small fires or deceptively quiet areas of large fires.
- In relatively light fuels, such as grass, herbs and light brush
- When there is an unexpected shift in wind direction or in wind speed
- When fire responds to topographic conditions and runs uphill



"Well, thank God we all made it out in time. ...
'Course, now we're equally screwed."

Operational Leadership



Wildland Fire Leadership Values and Principles

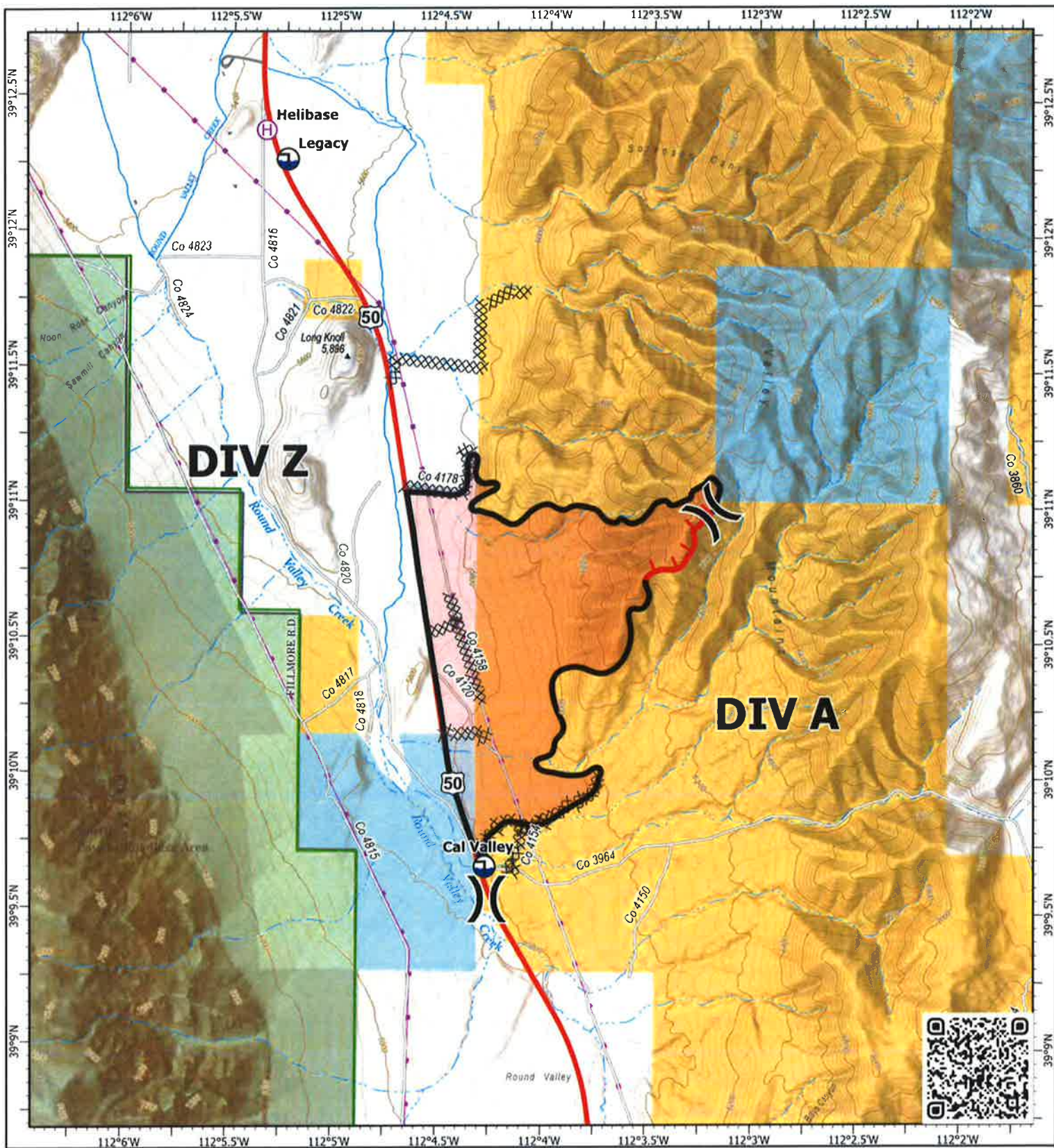
Values	Principles
Duty	Be proficient in your job, both technically and as a leader.
	Make sound and timely decisions.
	Ensure tasks are understood, supervised, and accomplished.
	Develop your subordinates for the future.
Respect	Know your subordinates and look out for their well-being.
	Keep your subordinates informed.
	Build the team.
	Employ your subordinates in accordance with their capabilities.
Integrity	Know yourself and seek improvement.
	Seek responsibility and accept responsibility for your actions.
	Set the example.

Remember to Maintain Situational Awareness throughout the Incident.

Thanks from your Safety Team!!

Clay Matheson

Thanks again for the extra effort to a safe working environment!!!!



IAP

Gap

UTSCS-250209

07/14/2025 Day

671 acres at 7/10/2025 1724hrs

0 0.25 0.5 0.75 1

Miles

1:36,000 | RIST | 7/13/2025 1255

Acres from GPS

North American 1983 Datum LatLong Gns



Helibase

Division Break

Draft Site

Completed Dozer Line

Wildfire Perimeter

Contained Fire

Edge

Uncontained Fire

Edge

Primary Highway

Secondary Paved

Secondary Dirt

Road, Not

Maintained for

Passenger Car

Road, high

Clearance

Private Roads

Transmission

Lines

USA Structures

USFS Roadless

Areas

Forest Service

Lands





Bureau of Land

Management

State

Administrative FS

Boundary

Incident/Project Name			Operational Period			
GAP 			07/14/2025-07/15/2025		0600-2200	
Ambulance Services 						
Name		Complete Address		Frequency		ALS Yes No
Richfield Dispatch for Medical Emergencies		Richfield		Local		
Air Rescue/Air Ambulance Services 						
Name		Number		Type of Aircraft & Capability		
Classic Air Medical		Request through Richfield Dispatch		Air Ambulance Comes out of Richfield		
Hospitals 						
Name Complete Address		DD° MM.MMM' N - Lat DD° MM.MMM' W - Long		ETA GRD AIR	Phone	Helipad Yes No
Central Valley Medical Center 48 W 1500 N Nephi, UT		Lat:		35min 45min	435-623-3065	X
		Long:		ALL TIMES ARE FROM ICP		
Utah Valley Hospital 1034 N 500 W Provo, Utah		Lat:	40°14.78 N'	80 min 1 hrs.	435-357-7002	X
		Long:	111°39.93 W	ALL TIMES ARE FROM ICP		
University of Utah 50 N Medical Dr. Salt Lake City, Utah		Lat:	40°46.36 N'	2.5hrs 1.5hrs.	801-587-7545	X
		Long:	111°50.23 W	ALL TIMES ARE FROM ICP		
St. George Regional Hospital 1380 E Medical Center St. George, Utah		Lat:	37°05.94 N'	2.5hrs 1.5hrs	435-251-1059	X
		Long:	113°33.16 W	ALL TIMES ARE FROM ICP		
Division/Branch/ Group		Responding Medical Personnel				
ICP		EMS Personnel:		Tyla Northrup 435-979-5285 MEDL		
		Equipment available on Scene:		ALS		
		Medical Emergency Channel:				
Division A		EMS Personnel:		Andrew Froula		
		Equipment Available on Scene:		BLS		
		Medical Emergency Channel:				
		Approved Helispot:				
Division Z		EMS Personnel:				
		Equipment Available on Scene:				
		Medical Emergency Channel:				
		Approved Helispot:				
		EMS Personnel:				
		Equipment Available on Scene:				
		Medical Emergency Channel:				
		Approved Helispot:				
Prepared By (Medical Unit Leader)		Date/Time		Reviewed By (Safety Officer)		Date/Time
Tyla Northrup		7/13/2025				

ACTIVITY LOG (ICS 214)

[illegible]

Medical Incident Report

FOR A NON-EMERGENCY INCIDENT, WORK THROUGH CHAIN OF COMMAND TO REPORT AND TRANSPORT INJURED PERSONNEL AS NECESSARY.

FOR A MEDICAL EMERGENCY: IDENTIFY ON SCENE INCIDENT COMMANDER BY NAME AND POSITION AND ANNOUNCE "MEDICAL EMERGENCY" TO INITIATE RESPONSE FROM ICP COMMUNICATIONS.

Use the following items to communicate situation to ICP COMMUNICATIONS.

1. CONTACT ICP COMMUNICATIONS: (Verify correct frequency prior to starting report)

Ex: "Communications, Div. Alpha. Stand-by for Emergency Traffic."

2. INCIDENT STATUS: Provide incident summary (including number of patients) and command structure.

Ex: "ICP Communications, I have a Red priority patient, unconscious, struck by a falling tree. Requesting air ambulance to Forest Road 1 at (Lat./Long.) This will be the Trout Meadow Medical, IC is TFLD Jones, EMT Smith is providing medical care."

Severity of Emergency / Transport Priority	<input type="checkbox"/> RED / PRIORITY 1 Life or limb threatening injury or illness. Evacuation need is IMMEDIATE Ex: Unconscious, difficulty breathing, bleeding severely, 2° – 3° burns more than 4 palm sizes, heat stroke, disoriented. <input type="checkbox"/> YELLOW / PRIORITY 2 Serious Injury or illness. Evacuation may be DELAYED if necessary. Ex: Significant trauma, unable to walk, 2° – 3° burns not more than 1-3 palm sizes. <input type="checkbox"/> GREEN / PRIORITY 3 Minor Injury or illness. Non-Emergency transport Ex: Sprains, strains, minor heat-related illness.
Nature of Injury or Illness & Mechanism of Injury	Brief Summary of Injury or Illness (Ex: Unconscious, Struck by Falling Tree)
Transport Request	Air Ambulance / Short Haul/Hoist Ground Ambulance / Other
Patient Location	Descriptive Location & Lat. / Long. (WGS84)
Incident Name	Geographic Name + "Medical" (Ex: Trout Meadow Medical)
On-Scene Incident Commander	Name of on-scene IC of Incident within an Incident (Ex: TFLD Jones)
Patient Care	Name of Care Provider (Ex: EMT Smith)

3. INITIAL PATIENT ASSESSMENT: Complete this section for each patient as applicable (start with the most severe patient)

Patient Assessment: See IRPG PAGE 106

Treatment:

4. TRANSPORT PLAN:

Evacuation Location (if different): (Descriptive Location (drop point, intersection, etc.) or Lat. / Long.) Patient's ETA to Evacuation Location:

Helispot / Extraction Site Size and Hazards:

5. ADDITIONAL RESOURCES / EQUIPMENT NEEDS:

Example: Paramedic/EMT, Crews, Immobilization Devices, AED, Oxygen, Trauma Bag, IV/Fluid(s), Splints, Rope rescue, Wheeled litter, HAZMAT, Extrication

6. COMMUNICATIONS: Identify State Air/Ground EMS Frequencies and Hospital Contacts as applicable

Function	Channel Name/Number	Receive (RX)	Tone/NAC *	Transmit (TX)	Tone/NAC *
COMMAND					
AIR-TO-GRND					
TACTICAL					

7. CONTINGENCY: Considerations: If primary options fail, what actions can be implemented in conjunction with primary evacuation method? Be thinking ahead.

8. ADDITIONAL INFORMATION: Updates/Changes, etc.

REMEMBER: Confirm ETA's of resources ordered. Act according to your level of training. Be Alert. Keep Calm. Think Clearly. Act Decisively.