

MONROE CANYON

INCIDENT ACTION PLAN

Sunday July 20th 0600 - Monday July 21st 0600

UT-FIF-250223 / P4S5CN (0408)



Check-in/Finance/
IAPs/Maps/DEMOB



Incident Meeting Schedule		
0600	Day Shift Operational Briefing	ICP Briefing Area
1000	Cooperator Meeting	Snow College Conference Room
1200	Command and General Meeting	ICP Meeting Tent
1600	Tactics / Pre-Planning Meeting	ICP Operations/Resource Tent
1800	Planning Meeting	ICP Meeting Tent
1900	Night Shift Operational Briefing	ICP Briefing Area

ACTIVITY LOG (ICS 214)

[illegible]

INCIDENT OBJECTIVES (ICS 202)

1. Incident Name:		2. Operational Period: DAY/NIGHT	
MONROE CANYON		Date/Time From: 07/20/2025 0600	Date/Time To: 07/21/2025 0600 SUN MON
3. Objective(s): <ul style="list-style-type: none"> Implement suppression strategies that minimize impacts to identified values at risk, and ensures that firefighter and public safety are the top priority. Protect the communities of Monroe City, Burrville, and Kooshareem. Minimize fire impacts to the structures, infrastructure and other identified values located in the areas of Manning Meadows, Monroe Meadows, Bagley Ranch, Magelby, Elk Country, Porters, Long Flat, Johns Valley. Utilize tactics that have the highest probabilities of success, with a minimal amount of risk. Strengthen relationships with key stakeholders and the general public by providing accurate, thorough, and timely information for the duration of the incident. 			
4. Operational Period Command Emphasis: <ul style="list-style-type: none"> Ensure that constant and clear communication is maintained by briefing up and down your chain of command and closing all communicative loops for each operational period. Continue to develop and implement both indirect and direct fire control strategies as the fire behavior allows. Continue direct containment actions and mop up around all structures impacted by the fire. Protect identified values at risk from unwanted fire impacts. To the extent practical, protect structures and property without compromising firefighter safety. 			
General Situational Awareness: <ul style="list-style-type: none"> Do not take action in terrain where firefighter risk is high and risk to values is low. Establish and maintain your escape routes and safety zones as fire activity increases. Maintain heightened situational awareness on travel routes. Highway 24: Watch for animals(deer, elk, cattle) especially at dusk and dawn. There are numerous hazard trees throughout the incident. Review p.20, Hazard Tree Safety, in the IRPG for mitigations. Travel with a chainsaw or with someone who has one. 			
5. Site Safety Plan Required? Yes <input type="checkbox"/> No <input checked="" type="checkbox"/>			
Approved Site Safety Plan(s) Located at:			
6. Incident Action Plan (the items checked below are included in this Incident Action Plan): <div style="display: flex; justify-content: space-between; margin-top: 10px;"> <div style="width: 45%;"> <div style="display: flex; justify-content: space-between;"> <div style="width: 48%;"> <input checked="" type="checkbox"/> ICS 202 <input checked="" type="checkbox"/> ICS 203 <input checked="" type="checkbox"/> ICS 204 <input checked="" type="checkbox"/> ICS 205 <input type="checkbox"/> ICS 205A <input checked="" type="checkbox"/> ICS 206 </div> <div style="width: 48%;"> <input type="checkbox"/> ICS 207 <input checked="" type="checkbox"/> ICS 208 <input checked="" type="checkbox"/> ICS 220 <input type="checkbox"/> Map/Chart <input checked="" type="checkbox"/> Weather Forecast/Tides/Currents </div> </div> <div style="width: 45%;"> Other Attachments: <input type="checkbox"/> <input type="checkbox"/> <input type="checkbox"/> <input type="checkbox"/> </div> </div> </div>			
7. Prepared by: DAVID TAIT		Position/Title: RESL (T)	
8. Approved by Incident Commander:		Signature: /s/ David Tait	
ICS 202		Signature: /s/ Todd Murray	
IAP Page		Date/Time: 07/19/2025 2000	

ORGANIZATION ASSIGNMENT LIST (ICS 203)

1. Incident Name:		2. Operational Period: DAY/NIGHT	
MONROE CANYON		Date/Time From: 07/20/2025 0600 SUN	Date/Time To: 07/21/2025 0600 MON
3. Incident Commander(s) and Command Staff:		GROUND SUPPORT UNIT CARSON GUBLER	
INCIDENT COMMANDER	BRETT WATERS TODD MURRAY (T)	COMMUNICATIONS UNIT	BRANDON DIEMER RODNEY WRIGHT (T)
DEPUTY	TAIGA ROHRER	FOOD UNIT	SANDRA ROSENKRANCE
LIAISON OFFICER	JEREMY ROBERTSON; SHAWN FELDNER; LANCE KOVEL	SECURITY UNIT	KREIG RASMUSSEN
SAFETY OFFICER	SCOTT ROBINSON; CLIFFORD MCCLURE LISA KEMPER (T); IZAAK MCHENRY (T)	7. Operations Section:	
INFORMATION OFFICER	KATHY POLLOCK; MARY CERNICEK; CHARLES WEED; MADISON HEISER	OPS SECTION CHIEF	JASON PORTER; BRAD MIHELIC (T)
MEDICAL UNIT	TYLA NORTHRUP	PLANNING OPS	MATT CALL MIKE BERTAGNOLLI (T)
4. Agency/Organization Representative(s):		STRATEGIC OPS	KEITH MURPHY KELLY CORNWALL
Agency/Organization	Name	NIGHT OPS	DANIEL GUSTAFSON
UTAH FFSL	THOMAS PETERSON	Branch	I
USFS	JASON KLING KEN VERBONCOEUR (T)	BRANCH DIRECTOR	
BLM	DAVE MORTENSEN	DIVISION/GROUP	A TREVER HUNT
5. Planning Section:		DIVISION/GROUP	
CHIEF	RHONDA TORONTO; ROSE HENDERSON; ROSS WISE JASON BRAUNSTEIN	DIVISION/GROUP	
GIS SPECIALIST	ANDREW BAILEY; DEMETRIUS PURDIE-WILLIAMS GISELLE RANGEL (T); REBECCA RAMSEY (T)	Branch	II
RESOURCES UNIT	SUE SOBIESKI; SARAH BRIDGES DAVID TAIT (T); HECTOR SOCIAS (T)	BRANCH DIRECTOR	MARTY ADELL
SITUATION UNIT	LAILA LIENESCH BRIAN MONROE (T)	DIVISION/GROUP	G GABE HARRY
FIRE BEHAVIOR ANALYST	KEN LODA	DIVISION/GROUP	M JOE WILLIAMS JASON CURLEY (T)
TECHNOLOGY SUPPORT SPECIALIST	ERNEST ORTIZ; WOODY KESSLER; MESA GREER (T)	DIVISION/GROUP	BEAR VALLEY CONTINGENCY ANDY PASCARELLA
TRAINING SPECIALIST	JARED PEAK	DIVISION/GROUP	STRUCTURE GROUP TIM LAVIN CRAIG ROBERTSON
DOCUMENTATION UNIT	AUBRI KLING	Branch	III
INCIDENT METEOROLOGIST	CHRIS FOLTZ	BRANCH DIRECTOR	JEFF SURBER
6. Logistics Section:		DIVISION/GROUP	W CHRIS WEAVER
CHIEF	KENDALL NELSON; TERRY HOLSCLAW	DIVISION/GROUP	Z RYAN ERICKSON ELLIOTT ARNOLD (T)
FACILITIES UNIT	CLAY STEWART MYRON JEFFS (T)	7b. Air Operations Branch:	
SUPPLY UNIT	DOUG ROBISON STEVEN O'NEIL (T)	AIR OPS BRANCH DIRECTOR	BILL HAYES
ORDERING MANAGER	JUSTIN SHORT SCOTT ZIEDLER	AIR SUPPORT SUPERVISOR	STEVEN JANKE; WILL MCCUBBREY
GROUND SUPPORT UNIT	PARTRIDGE, ARTHUR A	8. Finance/Administration Section:	
9. Prepared By:		CHIEF	MARY NICHOLSON; MERTINA RANGLES
Name:	SARAH BRIDGES	TIME UNIT	ELIZABETH BEHREND
Position/Title:	RESL	COMPENSATION UNIT	CARLA KEMPEN
Signature:	/s/ Sarah Bridges	COST UNIT	CHARLES JOY
ICS 203	IAP Page		
	Date/Time: 07/19/2025 1700		



Fire Weather Forecast



FORECAST NO: 05
PREDICTION FOR: Sunday's Operational Period
SHIFT DATE: July 20, 2025

INCIDENT: Monroe Canyon
UNIT: Fishlake NF
SIGNED: *Chris Foltz* **Chris Foltz**

TIME AND DATE ISSUED: July 19, 2025 1500

Incident Meteorologist (IMET)

Discussion:

Warmer and drier conditions will begin to overtake the fire area beginning today. A very isolated thunderstorm is possible during the afternoon and evening hours on Sunday but a vast majority of the area will remain dry. Humidity recoveries overnight will be moderate to poor with afternoon values falling into the teens.

TODAY:

Sky/Weather: Mostly clear early, becoming partly cloudy during the afternoon. Just an outside chance of a thunderstorm during the afternoon and evening hours.

Max Temperature: Valleys: 87-91. **Mid-Slopes and Ridges:** 78 to 82.

Min RH: Valleys: 12 to 22 percent. **Mid-Slopes and Ridges:** 14 to 24 percent.

20 ft Winds: Lower Valleys: Terrain 3 to 7 mph becoming southwest 6 to 10 mph with gusts to 16 mph.

Mid-slopes and Ridges: Terrain until 1000 then west 8 to 12 mph, gusts to 21 mph

Transport Winds: SW 14 mph.

Chance of Wetting Rain: 5 percent.

Expected Rain Amount: 0.00"

TONIGHT:

Sky/Weather: Becoming mostly clear. Smoke and haze in valleys and sheltered drainages.

Min Temperature: Lower Valleys: 50 to 54. **Mid-Slopes and Ridges:** 59 to 64.

Max RH: Lower Valleys: 55 to 65 percent. **Mid-Slopes and Ridges:** 30 to 40 percent.

20 ft Winds: Valleys/Lower Slopes: Terrain/down-valley 3 to 6 mph.

Mid-Slopes and Ridges: Downslope/down-valley 4 to 8 mph.

Inversion: 500 ft after 2100.

MONDAY:

Sky/Weather: Smoke and haze until late morning when the inversion dissipates then partly cloudy.

Max Temperature: Valleys: 88-92. **Mid-Slopes and Ridges:** 78 to 82.

Min RH: Valleys: 13 to 23 percent. **Mid-Slopes and Ridges:** 15 to 25 percent.

20 ft Winds: Lower Valleys: Terrain 3 to 7 mph becoming southwest 8 to 12 mph with gusts to 22 mph.

Mid-slopes and Ridges: Terrain until 1000 then southwest 8 to 12 mph with gusts to 23 mph.

Transport Winds: SW 12 mph.

Chance of Wetting Rain: 0 percent.

Expected Rain Amount: 0.00"

OUTLOOK FOR TUESDAY THROUGH THURSDAY:

A gradual warming and drying trend is expected. Afternoon humidity will trend lower each day with near-critical to critical conditions along with moderate to poor overnight recoveries. A very small chance of an afternoon storm during this time period but little if any measurable precipitation is expected.

Weather observations can be texted to 816-833-6299 or emailed to christopher.foltz@noaa.gov



Link to nearby obs

FIRE BEHAVIOR FORECAST	
FORECAST NUMBER 4	TYPE OF INCIDENT: Wildland Fire
INCIDENT NAME: Monroe Canyon	OPERATIONAL PERIOD 7/20 – 21/25
DATE ISSUED: 19 July 2025	TIME ISSUED: 1900
UNIT: Fishlake National Forest	SIGNED <i>Ken Loda</i>
	Ken Loda, FBAN
INPUTS	
WEATHER SUMMARY See the preceding Fire Weather Forecast.	
<p>FUELS CONDITIONS Fuel moisture: Historically, live fuel moistures are climbing at this time of year. Even with the precipitation we've gotten, those values are rising slightly or static. Live and dead fuel moistures are at or near historic low points for this time of the year. One-hour fuel moisture can be expected to be about 10% at 0600. That will drop to about 4% on exposed flat areas and south aspects from about 1200 to 1700. The 10-hour fuels are at 10%, the 100-hour about 8% and the 1000-hour fuels about 8%. After 2030 the fine fuel moistures will fairly rapidly increase to about 7%, then gradually build to about 10% from midnight through the night. Live fuel moisture: The live moisture is near or below 100% in conifers, but this could vary with aspect and setting.</p>	
OUTPUTS	
<p align="center">CONDITIONS SUPPORT MORE ACTIVE FIRE</p> <p>GENERAL FIRE BEHAVIOR This fire continues to remain active through the night. Fuel moisture in the heavier dead fuels – the 100- and 1000-hours – are little influenced by light precipitation or changes in relative humidity, so are likely to continue to burn to some extent through the night. General conditions will be fairly active with moderate flame lengths and rates of spread through the day, with some increase around 1200 today with our predicted winds. General winds will be less today but could still produce some torching and related spot fires. Because of the low live fuel moistures much of the fire has some potential for single and multi-tree torching. At peak burning conditions the behavior in the timber understory is expected to be ROS 9 to 13 ch/hr with flame lengths 7 to 9 feet; in the more continuous dead & down ROS 10 to 15 ch/hr, with up to 6-foot flame length.</p> <p>Spotting: Torching and spotting is possible. Spotting distance from torching could be up to ½ -mile in the forecast gusts. From burning piles it would be about 500 feet. Watch for rollout on steep slopes. The probability of ignition will be 20% early and late, up to 75% during peak burning conditions.</p> <p>Crown fire potential: Short crown runs could be possible where wind gusts are directed upslope but are not likely.</p> <p>SPECIFIC FIRE BEHAVIOR The forecast winds align favorably with much of the terrain, and may push fire along ridges and down the slopes on the uncontrolled eastern flank.</p>	
SAFETY	
<p>SAFETY Conditions are becoming hotter and drier. Keep your situational awareness up. Watch for rollout.</p> <p>AIR OPERATIONS Fire behavior or weather should not substantially interfere with aircraft operations today.</p>	

Division/Group Assignment List (ICS 204 WF)

Controlled Unclassified Information//Basic

1. Incident Name:				3.			
MONROE CANYON				I		A	
2. Operational Period: DAY/NIGHT							
Date/Time From: 07/20/2025 0600 SUN		Date/Time To: 07/21/2025 0600 MON					
4. Operations Personnel							
OPERATIONS CHIEF		JASON PORTER BRAD MIHELIC (T)		BRANCH DIRECTOR			
DIVISION/GROUP SUPERVISOR		TREVER HUNT					
5. Resources Assigned this Period							
Strike Team / Task Force / Resource Designator	LWD	Leader	Number Persons	Drop Off PT./Time	Pick Up PT./Time		
C-7008 CRW2 FUEGO HC	07/31	SPENCER BENTLEY, RAYMOND GRIFFIN	20	SNOW COLLEGE /0600	SNOW COLLEGE/2200		
C-7011 CRW2 J & SONS	07/31	EMILIO CORIAZO	20	SNOW COLLEGE /0600	SNOW COLLEGE/2200		
C-7015 CRW2 GRAYBACK NCC17A	08/01	TIM BREWER	20	SNOW COLLEGE /0600	SNOW COLLEGE/2200		
O-5060 FMOD ALPINE FORESTRY	08/01	DAVID TELIAN	2	SNOW COLLEGE /0600	SNOW COLLEGE/2200		
O-5087 TFLD	07/31	JOE HARGER	1	SNOW COLLEGE /0600	SNOW COLLEGE/2200		
O-5085 HEQB	08/02	TYLER ISHLER	1	SNOW COLLEGE /0600	SNOW COLLEGE/2200		
O-6118 HEQB (T)	08/02	WLLIAM READ	1	SNOW COLLEGE /0600	SNOW COLLEGE/2200		
E-5 ENG3 GREAT BASIN	07/30	HAL STOKER	3	SNOW COLLEGE /0600	SNOW COLLEGE/2200		
E-7 ENG3 IDAHO HEATSEAKER LLC 22	07/30	WYATT JOHNSON; ETHAN KERSHAW (T)	3	SNOW COLLEGE /0600	SNOW COLLEGE/2200		
* E-40 ENG3 E341	07/31	HESTON BURR	7	SNOW COLLEGE /0600	SNOW COLLEGE/2200		
E-6120 ENG4 IDAHO HEATSEEKER 16	07/27	CHANCE KERSTIEN	3	SNOW COLLEGE /0600	SNOW COLLEGE/2200		
* E-9 ENG6 MASWEL LLC	07/28	SCOTT ANDERSON	3	SNOW COLLEGE /0600	SNOW COLLEGE/2200		
E-6067 ENG6 PRO TEMPS INC E116	07/30	MICHAEL LARSEN	3	SNOW COLLEGE /0600	SNOW COLLEGE/2200		
*O-5071 SOFC	07/31	LANCE ROBERTS	1	SNOW COLLEGE /0600	SNOW COLLEGE/2200		
E-6076 AMB2 ASCENT MEDICAL TRANSPORT	07/31	ARTHUR YANEZ	2	SNOW COLLEGE /0600	SNOW COLLEGE/2200		
O-5106 EMPF	08/02	MEDIC BURNS	1	SNOW COLLEGE /0600	SNOW COLLEGE/2200		
O-5020 AEMF EMT	07/29	TRAVIS ROLLINS	1	SNOW COLLEGE /0600	SNOW COLLEGE/2200		
E-6104 VUTV OUTBACK FIREFIGHTING				SNOW COLLEGE /0600	SNOW COLLEGE/2200		
8. Division/Group Communication Summary							
Function	Channel	RX Frequency N/W	RX Tone/NAC	TX Frequency N/W	TX Tone/NAC	Mode	
TACTICAL	1	168.0500	146.2	168.0500	146.2	A	
COMMAND	8	170.6875	146.2	166.5750	146.2	A	
AIR TO GROUND	13	170.5000		170.5000		A	
AIR TO GROUND	14	166.3250		166.3250		A	
9. Prepared By (Resource Unit Leader)		Approved By (Planning Section Chief)			Date		Time
HECTOR SOCIAS, RESL(T)		RHONDA TORONTO, PSCC			07/19/2025		2000

Division/Group Assignment List (ICS 204 WF)

Controlled Unclassified Information//Basic

1. Incident Name:				3.			
MONROE CANYON				Branch: I		Division/Group: A	
2. Operational Period: DAY/NIGHT							
Date/Time From: 07/20/2025 0600		SUN		Date/Time To: 07/21/2025 0600		MON	
4. Operations Personnel							
OPERATIONS CHIEF		JASON PORTER BRAD MIHELIC (T)		BRANCH DIRECTOR			
DIVISION/GROUP SUPERVISOR		TREVER HUNT					
5. Resources Assigned this Period							
Strike Team / Task Force / Resource Designator		LWD	Leader	Number Persons	Drop Off PT./Time	Pick Up PT./Time	
6. Control Operations/Work Assignments:							
<p><u>TASK:</u> Continue direct line construction and secure edge in Oak Flat to Hunts Lake 2. Begin mop up operations at 1/2 chain depth. Identify areas for direct & indirect line construction further south along west-southwest flank. Identify potential contingency line locations from Hunt Lake to County Rd. 2302 with READ. Look for potential dozer line placement. Identify and map water sources.</p> <p><u>PURPOSE:</u> Protect private property to the west of the fire by limiting growth with containment lines. Provide highest probability of success to protect private property and Monroe City with successful, redundant suppression and mitigation efforts.</p> <p><u>END STATE:</u> Little to no impact to private property, fire kept to smallest footprint possible with given conditions. Public land damage minimized. Impact to public from fire, smoke, and suppression efforts kept to minimum.</p>							
7. Special Instructions:							
<ul style="list-style-type: none"> * IA Resource Continually identify escape routes and safety zones as conditions evolve and the fire progresses. Be cautious of the many dead and down trees throughout the fire area. Watch for snags and hazard trees. Abide by travel speeds set in the communities of Richfield and Monroe. Ensure to work with READs prior to any mechanical treatments or dozer operations. 							
8. Division/Group Communication Summary							
Function	Channel	RX Frequency N/W	RX Tone/NAC	TX Frequency N/W	TX Tone/NAC	Mode	
TACTICAL	1	168.0500	146.2	168.0500	146.2	A	
COMMAND	8	170.6875	146.2	166.5750	146.2	A	
AIR TO GROUND	13	170.5000		170.5000		A	
AIR TO GROUND	14	166.3250		166.3250		A	
9. Prepared By (Resource Unit Leader)			Approved By (Planning Section Chief)		Date	Time	
HECTOR SOCIAS, RESL(T)			RHONDA TORONTO, PSCC		07/19/2025	2000	

Division/Group Assignment List (ICS 204 WF)
Controlled Unclassified Information//Basic

1. Incident Name:				3.			
MONROE CANYON				II		BEAR VALLEY CONTINGENCY	
2. Operational Period: DAY/NIGHT							
Date/Time From: 07/20/2025 0600 SUN		Date/Time To: 07/21/2025 0600 MON					
4. Operations Personnel							
OPERATIONS CHIEF		JASON PORTER; BRAD MIHELIC (T)		BRANCH DIRECTOR		MARTY ADELL	
DIVISION/GROUP SUPERVISOR		ANDREW PASCARELLA					
5. Resources Assigned this Period							
Strike Team / Task Force / Resource Designator		LWD	Leader	Number Persons	Drop Off PT./Time	Pick Up PT./Time	
UNSTAFFED							
6. Control Operations/Work Assignments:							
<p><u>TASK:</u> Scout contingency lines and identify values at risk in Burrville and Bear Valley area. Implement road grading plan and other road maintenance on the Koosharem Canyon Road.</p> <p><u>PURPOSE:</u> Provide options and intelligence to protect private property if fire should impact the area. Repair and improve access and egress roads that are being heavily traveled.</p> <p><u>END STATE:</u> Minimal impact to private property. Road damage from fire traffic is repaired.</p>							
7. Special Instructions:							
<ul style="list-style-type: none"> Continually identify escape routes and safety zones as conditions evolve and the fire progresses. Be cautious of the many dead and down trees throughout the fire area. Watch for snags and hazard trees. 							
8. Division/Group Communication Summary							
Function	Channel	RX Frequency N/W	RX Tone/NAC	TX Frequency N/W	TX Tone/NAC	Mode	
TACTICAL	6	168.2500	146.2	168.2500	146.2	A	
COMMAND	7	169.7500	146.2	167.1000	146.2	A	
COMMAND	8	170.6875	146.2	166.5750	146.2	A	
AIR TO GROUND	13	170.5000		170.5000		A	
9. Prepared By (Resource Unit Leader)		Approved By (Planning Section Chief)			Date	Time	
HECTOR SOCIAS, RESL (T)		RHONDA TORONTO, PSCC			07/19/2025	2000	

Division/Group Assignment List (ICS 204 WF)
Controlled Unclassified Information//Basic

1. Incident Name:				3.			
MONROE CANYON				II		G	
2. Operational Period: DAY/NIGHT							
Date/Time From: 07/20/2025 0600 SUN		Date/Time To: 07/21/2025 0600 MON					
4. Operations Personnel							
OPERATIONS CHIEF		JASON PORTER; BRAD MIHELIC (T)		BRANCH DIRECTOR		MARTY ADELL	
DIVISION/GROUP SUPERVISOR		GABE HARRY					
5. Resources Assigned this Period							
Strike Team / Task Force / Resource Designator	LWD	Leader	Number Persons	Drop Off PT./Time	Pick Up PT./Time		
*C-3 CRW1 SAWTOOTH IHC	07/21	KYLE WEST	22	BIG LAKE SPIKE CAMP/0600	BIG LAKE SPIKE CAMP/2200		
* C-7014 CR2I SLIDE	07/31	JOSH HIGGINS	21	BIG LAKE SPIKE CAMP/0600	BIG LAKE SPIKE CAMP/2200		
C-7009 CRW2 T2C455 AYE GARCIA	07/31	NOEL SOLIS	20	BIG LAKE SPIKE CAMP/0600	BIG LAKE SPIKE CAMP/2200		
C-7012 CRW2 G AND C FORESTRY	07/31	JHOAN DELGADO; OLMAR VERA	20	BIG LAKE SPIKE CAMP/0600	BIG LAKE SPIKE CAMP/2200		
E-6101.4 TFLD	08/01	KYLE MCQUILLIN	1	BIG LAKE SPIKE CAMP/0600	BIG LAKE SPIKE CAMP/2200		
E-6101 ENG4 BLM 1422	08/01	ALEX ARROYO	4	BIG LAKE SPIKE CAMP/0600	BIG LAKE SPIKE CAMP/2200		
E-6088 ENG6 ARCHER MOUNTAIN	07/31	CALEB TORQUATO	3	BIG LAKE SPIKE CAMP/0600	BIG LAKE SPIKE CAMP/2200		
E-6118 ENG6 KETCHUM 101	07/26	RYAN BREEN	3	BIG LAKE SPIKE CAMP/0600	BIG LAKE SPIKE CAMP/2200		
E-6126 ENG6 SCHOLL FIRE	07/26	STEVEN DOUGLASS	3	BIG LAKE SPIKE CAMP/0600	BIG LAKE SPIKE CAMP/2200		
E-13 DZR2 2821	07/27	BRUCE WILLIAM	2	BIG LAKE SPIKE CAMP/0600	BIG LAKE SPIKE CAMP/2200		
E-36 WTS2 BLACK OPERATIONS TENDER	07/31	WILL BLACK	1	BIG LAKE SPIKE CAMP/0600	BIG LAKE SPIKE CAMP/2200		
O-5066 REMS 2 NIM	07/31	WILLIAM BUCKMAN	4	BIG LAKE SPIKE CAMP/0600	BIG LAKE SPIKE CAMP/2200		
O-5017 EMPF	07/28	MEDIC LUND	1	BIG LAKE SPIKE CAMP/0600	BIG LAKE SPIKE CAMP/2200		
O-5019 EMPF	07/28	MEDIC NEWMAN	1	BIG LAKE SPIKE CAMP/0600	BIG LAKE SPIKE CAMP/2200		
E-6114 VUTV OUTBACK FIREFIGHTING				BIG LAKE SPIKE CAMP/0600	BIG LAKE SPIKE CAMP/2200		
8. Division/Group Communication Summary							
Function	Channel	RX Frequency N/W	RX Tone/NAC	TX Frequency N/W	TX Tone/NAC	Mode	
TACTICAL	1	168.0500	146.2	168.0500	146.2	A	
COMMAND	7	169.7500	146.2	167.1000	146.2	A	
AIR TO GROUND	13	170.5000		170.5000		A	
AIR TO GROUND	14	166.3250		166.3250		A	
9. Prepared By (Resource Unit Leader)		Approved By (Planning Section Chief)			Date	Time	
HECTOR SOCIAS, RESL (T)		RHONDA TORONTO, PSCC			07/19/2025	2000	

Division/Group Assignment List (ICS 204 WF)

Controlled Unclassified Information//Basic

1. Incident Name:				3.			
MONROE CANYON				II		G	
2. Operational Period: DAY/NIGHT							
Date/Time From: 07/20/2025 0600 SUN		Date/Time To: 07/21/2025 0600 MON					
4. Operations Personnel							
OPERATIONS CHIEF		JASON PORTER; BRAD MIHELIC (T)		BRANCH DIRECTOR		MARTY ADELL	
DIVISION/GROUP SUPERVISOR		GABE HARRY					
5. Resources Assigned this Period							
Strike Team / Task Force / Resource Designator		LWD	Leader	Number Persons	Drop Off PT./Time	Pick Up PT./Time	
6. Control Operations/Work Assignments:							
<p>TASK: Prep structures in Porters and Long Flat, utilizing hose, pumps, sprinklers, and available water sources when applicable. Scout and establish control line locations from DP 45 to Magleby Pass then north to H-30. Scout for line south of Long Flat structures and tie into past fuel treatments.</p> <p>PURPOSE: Protect private structures and property, preserve functionality of critical infrastructure and roadways, and minimize fire impact to recreation areas and natural resources. Eliminate switchbacks and other challenging suppression features.</p> <p>END STATE: Private property has little to no fire impact. Area closures can be lifted and recreation areas left with minimal damage. Fire impact to land kept as minimal as possible based on conditions and resources available.</p>							
7. Special Instructions:							
<ul style="list-style-type: none"> *IA Resources Continually identify escape routes and safety zones as conditions evolve and the fire progresses. Be cautious of the many dead and down trees throughout the fire area. Watch for snags and hazard trees .Ensure to work with READs prior to any mechanical treatments or dozer operations. 							
8. Division/Group Communication Summary							
Function	Channel	RX Frequency N/W	RX Tone/NAC	TX Frequency N/W	TX Tone/NAC	Mode	
TACTICAL	1	168.0500	146.2	168.0500	146.2	A	
COMMAND	7	169.7500	146.2	167.1000	146.2	A	
AIR TO GROUND	13	170.5000		170.5000		A	
AIR TO GROUND	14	166.3250		166.3250		A	
9. Prepared By (Resource Unit Leader)			Approved By (Planning Section Chief)		Date	Time	
HECTOR SOCIAS, RESL (T)			RHONDA TORONTO, PSCC		07/19/2025	2000	

Division/Group Assignment List (ICS 204 WF)
Controlled Unclassified Information//Basic

1. Incident Name:				3.			
MONROE CANYON				II		M	
2. Operational Period: DAY/NIGHT							
Date/Time From: 07/20/2025 0600 SUN		Date/Time To: 07/21/2025 0600 MON					
4. Operations Personnel							
OPERATIONS CHIEF		JASON PORTER; BRAD MIHELIC (T)		BRANCH DIRECTOR		MARTY ADELL	
DIVISION/GROUP SUPERVISOR		JOE WILLIAMS JASON CURLEY (T)					
5. Resources Assigned this Period							
Strike Team / Task Force / Resource Designator	LWD	Leader	Number Persons	Drop Off PT./Time	Pick Up PT./Time		
* C-4 CRW1 IDAHO CITY IHC	07/21	STEVE TRAVERSO	23	BOX CREEK SPIKE CAMP/0600	BOX CREEK SPIKE CAMP/2200		
C-7017 CR2I MILLER TIMBER	07/29	DAN ALVARADO	20	ICP/0600	ICP/2200		
O-5006 WFM2 GB LUCKY PEAK	07/29	JASON PENDLETON	8	BOX CREEK SPIKE CAMP/0600	BOX CREEK SPIKE CAMP/2200		
O-5029 TFLD	07/28	RYLEY MCBRIDE	1	BOX CREEK SPIKE CAMP/0600	BOX CREEK SPIKE CAMP/2200		
O-5006.1 TFLD (T)	07/29	JUSTIN ALESHIRE	1	BOX CREEK SPIKE CAMP/0600	BOX CREEK SPIKE CAMP/2200		
O-5084 HEQB	08/02	CHARLES SANDFORD	1	BOX CREEK SPIKE/0600	BOX CREEK SPIKE/2200		
*E-3 ENG3 HT315	07/29	JOHNNY CARL	4	BOX CREEK SPIKE CAMP/0600	BOX CREEK SPIKE CAMP/2200		
*E-8 ENG6 TORCH	07/27	AUSTIN EMERY	3	BOX CREEK SPIKE CAMP/0600	BOX CREEK SPIKE CAMP/2200		
E-23 DZR2 3822	07/28	TRENT DUNCAN	2	BOX CREEK SPIKE CAMP/0600	BOX CREEK SPIKE CAMP/2200		
E-6061 WTT2 INKOM FIRE 163	07/31	ROBERT BEVAN	2	BOX CREEK SPIKE CAMP/0600	BOX CREEK SPIKE CAMP/2200		
E-6065 WTS2 COWBOY CONTRACTING 104	07/30	ZACH BURTENSHAW	1	BOX CREEK SPIKE CAMP/0600	BOX CREEK SPIKE CAMP/2200		
O-5008 SOF3	07/28	JUSTIN YANKEY	1	BOX CREEK SPIKE CAMP/0600	BOX CREEK SPIKE CAMP/2200		
O-5023 REMS 1 NIM	07/30	RYAN LAZZERI	4	BOX CREEK SPIKE CAMP/0600	BOX CREEK SPIKE CAMP/2200		
E-6038 AMB1 ALS	07/28	MEDIC GARRETT MATTHEWS	2	BOX CREEK SPIKE CAMP/0600	BOX CREEK SPIKE CAMP/2200		
8. Division/Group Communication Summary							
Function	Channel	RX Frequency N/W	RX Tone/NAC	TX Frequency N/W	TX Tone/NAC	Mode	
TACTICAL	3	168.6000	146.2	168.6000	146.2	A	
COMMAND	7	169.7500	146.2	167.1000	146.2	A	
COMMAND	9	169.5375	146.2	164.7125	146.2	A	
AIR TO GROUND	13	170.5000		170.5000		A	
AIR TO GROUND	14	166.3250		166.3250		A	
9. Prepared By (Resource Unit Leader)		Approved By (Planning Section Chief)			Date	Time	
HECTOR SOCIAS, RESL (T)		RHONDA TORONTO, PSCC			07/19/2025	2000	

Division/Group Assignment List (ICS 204 WF)

Controlled Unclassified Information//Basic

1. Incident Name:				3.			
MONROE CANYON				Branch:		Division/Group:	
2. Operational Period: DAY/NIGHT				II		M	
Date/Time From: 07/20/2025 0600 SUN		Date/Time To: 07/21/2025 0600 MON					
4. Operations Personnel							
OPERATIONS CHIEF		JASON PORTER; BRAD MIHELIC (T)		BRANCH DIRECTOR		MARTY ADELL	
DIVISION/GROUP SUPERVISOR		JOE WILLIAMS JASON CURLEY (T)					
5. Resources Assigned this Period							
Strike Team / Task Force / Resource Designator		LWD	Leader	Number Persons	Drop Off PT./Time	Pick Up PT./Time	
6. Control Operations/Work Assignments:							
<p><u>TASK:</u> Complete prepping structures at Magleby, Bagley Ranch, and Elk Country. Continue building suppression systems around structures using hose, pumps, sprinklers, and engines. Identify and prep areas to construct containment line. Prep fuels and area for potential firing operations. Utilize heavy equipment and crews to establish fire control line on west side of private land utilizing existing fuel treatments where applicable. Update all triage information gathered during I.A.</p> <p><u>PURPOSE:</u> Protect private property in Magleby, Bagley Ranch, and Elk Country areas from fire damage by stopping fire prior to incursion. Provide suppression lines to work from in the event fire threatens to impact the area.</p> <p><u>END STATE:</u> Fire growth into and onto private property is eliminated or minimized. Roadways and infrastructure are left undamaged. Closures lifted and fire impacts to public land and recreational areas minimized.</p>							
7. Special Instructions:							
<ul style="list-style-type: none"> * IA Resources Continually identify escape routes and safety zones as conditions evolve and the fire progresses. Be cautious of the many dead and down trees throughout the fire area. Watch for snags and hazard trees. UAS module may be operating in Division M. Ensure to work with READs prior to any mechanical treatments or dozer operations. 							
8. Division/Group Communication Summary							
Function	Channel	RX Frequency N/W	RX Tone/NAC	TX Frequency N/W	TX Tone/NAC	Mode	
TACTICAL	3	168.6000	146.2	168.6000	146.2	A	
COMMAND	7	169.7500	146.2	167.1000	146.2	A	
COMMAND	9	169.5375	146.2	164.7125	146.2	A	
AIR TO GROUND	13	170.5000		170.5000		A	
AIR TO GROUND	14	166.3250		166.3250		A	
9. Prepared By (Resource Unit Leader)		Approved By (Planning Section Chief)			Date	Time	
HECTOR SOCIAS, RESL (T)		RHONDA TORONTO, PSSC			07/19/2025	2000	

Division/Group Assignment List (ICS 204 WF)

Controlled Unclassified Information//Basic

1. Incident Name:				3.			
MONROE CANYON				II		STRUCTURE GROUP	
2. Operational Period: DAY/NIGHT							
Date/Time From: 07/20/2025 0600 SUN		Date/Time To: 07/21/2025 0600 MON					
4. Operations Personnel							
OPERATIONS CHIEF		JASON PORTER BRAD MIHELIC (T)		BRANCH DIRECTOR		MARTY ADELL	
DIVISION/GROUP SUPERVISOR		TIM LAVIN; CRAIG ROBERTSON					
5. Resources Assigned this Period							
Strike Team / Task Force / Resource Designator	LWD	Leader	Number Persons	Drop Off PT./Time	Pick Up PT./Time		
C-7023 CRW2 CABRERA CONTRACTING	07/25	PEDRO MARTINEZ	20	ICP/0600	ICP/2200		
C-7024 CRW2 FUEGO FIRE	07/31	JOSE IBARRA	20	ICP/0600	ICP/2200		
* O-3.80 TFLD	07/29	MATT CHRISTENSEN	1	ICP/0600	ICP/2200		
E-4 ENG3 PARMA 963	07/30	JOSEPH VILLASISTA	4	ICP/0600	ICP/2200		
E-6 ENG3 BISON RIDGE E354	07/30	ANDREW MCCORKLE	3	ICP/0600	ICP/2200		
E-6075 ENG3 STAR FIRE BR51	07/30	D. GARRINGER	3	ICP/0600	ICP/2200		
* E-6084 ENG3 E13 UTAH COUNTY	07/24	JORGEN OLSEN	4	ICP/0600	ICP/2200		
E-6122 ENG4 GRIZ ONE FIREFIGHTING	07/27	COBY TABER	3	ICP/0600	ICP/2200		
E-6071 ENG5 EVEREST FIRE AUTHORITY	07/30	STEVEN BOWSHER	3	ICP/0600	ICP/2200		
E-12 ENG6 NORTH TOOEELE ENGINE 611	07/29	JASON BROWN	3	ICP/0600	ICP/2200		
E-6066 ENG6 NATIONAL WILDLAND FIRE	07/30	STEVEN HILLS	3	ICP/0600	ICP/2200		
E-6069 ENG6 WEST VALLEY 672	07/30	JED PETERS	4	ICP/0600	ICP/2200		
E-6074 ENG6 0463 FORT HALL BIA	07/30	SPENCER WASHAKIE	3	ICP/0600	ICP/2200		
* E-6079 ENG6 JAUB BRUSH 12	07/30	ANDREW FROULA	4	ICP/0600	ICP/2200		
E-6081 ENG6 TRAILBLAZERS	08/01	RAY MOORE	3	ICP/0600	ICP/2200		
E-6086 ENG6 BLEDSOE FIRE	07/31	MATHEW BLEDSOE	3	ICP/0600	ICP/2200		
E-6060 WTT2 GREAT BASIN 1101	07/30	WESLEY SMITHSON	2	ICP/0600	ICP/2200		
E-6090 WTS2 NORTH BANNOCK FD	08/01	ADAM MATHIAS	1	ICP/0600	ICP/2200		
8. Division/Group Communication Summary							
Function	Channel	RX Frequency N/W	RX Tone/NAC	TX Frequency N/W	TX Tone/NAC	Mode	
TACTICAL	2	168.2000	146.2	168.2000	146.2	A	
COMMAND	7	169.7500	146.2	167.1000	146.2	A	
COMMAND	9	169.5375	146.2	164.7125	146.2	A	
AIR TO GROUND	13	170.5000		170.5000		A	
AIR TO GROUND	14	166.3250		166.3250		A	
9. Prepared By (Resource Unit Leader)		Approved By (Planning Section Chief)			Date		Time
SUE SOBIESKI, RESL		RHONDA TORONTO, PSCC			07/19/2025		2000

Division/Group Assignment List (ICS 204 WF)

Controlled Unclassified Information//Basic

1. Incident Name:				3.			
MONROE CANYON				II		STRUCTURE GROUP	
2. Operational Period: DAY/NIGHT							
Date/Time From: 07/20/2025 0600		SUN		Date/Time To: 07/21/2025 0600		MON	
4. Operations Personnel							
OPERATIONS CHIEF		JASON PORTER BRAD MIHELIC (T)		BRANCH DIRECTOR		MARTY ADELL	
DIVISION/GROUP SUPERVISOR		TIM LAVIN; CRAIG ROBERTSON					
5. Resources Assigned this Period							
Strike Team / Task Force / Resource Designator		LWD	Leader	Number Persons	Drop Off PT./Time	Pick Up PT./Time	
6. Control Operations/Work Assignments:							
<p><u>TASK:</u> Support and boost resources in all divisions as needed, primarily focusing on structure protection and water handling operations. Assist in assessment of structures and private property including identifying hazards, hazmat, access/egress issues, and potential infrastructure damage. Relocate to Division M and integrate within Magleby area. Continue to improve, construct line, and mop up around structures. Build water handling systems, identify and map water sources. Assist other divisions as needed and be prepared to relocate if weather changes.</p> <p><u>PURPOSE:</u> Protect property from further or future damage from fire. Limit fire growth. Provide needed support to other divisions with limited resources to ensure global success.</p> <p><u>END STATE:</u> Fire impact and damage to private property is slowed considerably or stopped. Area closures can be lifted. End up with minimal negative impact from active fire. Fire kept within identified containment areas.</p>							
7. Special Instructions:							
<ul style="list-style-type: none"> IA Resources Continually identify escape routes and safety zones as conditions evolve and the fire progresses. Be cautious of the many dead and down trees throughout the fire area. Watch for snags and hazard trees. 							
8. Division/Group Communication Summary							
Function	Channel	RX Frequency N/W	RX Tone/NAC	TX Frequency N/W	TX Tone/NAC	Mode	
TACTICAL	2	168.2000	146.2	168.2000	146.2	A	
COMMAND	7	169.7500	146.2	167.1000	146.2	A	
COMMAND	9	169.5375	146.2	164.7125	146.2	A	
AIR TO GROUND	13	170.5000		170.5000		A	
AIR TO GROUND	14	166.3250		166.3250		A	
9. Prepared By (Resource Unit Leader)			Approved By (Planning Section Chief)			Date	
SUE SOBIESKI, RESL			RHONDA TORONTO, PSCC			07/19/2025	
						2000	

Division/Group Assignment List (ICS 204 WF)
Controlled Unclassified Information//Basic

1. Incident Name:				3.			
MONROE CANYON				III		W	
2. Operational Period: DAY/NIGHT							
Date/Time From: 07/20/2025 0600 SUN		Date/Time To: 07/21/2025 0600 MON					
4. Operations Personnel							
OPERATIONS CHIEF		JASON PORTER BRAD MIHELIC (T)		BRANCH DIRECTOR		JEFF SURBER	
DIVISION/GROUP SUPERVISOR		CHRIS WEAVER					
5. Resources Assigned this Period							
Strike Team / Task Force / Resource Designator	LWD	Leader	Number Persons	Drop Off PT./Time	Pick Up PT./Time		
C-7010 CRW2 PR REFORESTATION	07/31	LALO ROMAS, JUAN CALDERILLA (T)	20	ICP/0600	ICP/2200		
C-7013 CRW2 ANGRY BEAR	07/31	MARTEEN SERVIN	20	ICP/0600	ICP/2200		
C-7016 CR2I FLATHEAD NF	07/28	BLAINE CARR (T)	18	ICP/0600	ICP/2200		
C-7025 CRW2 CABRERA CONTRACTING 1	07/31	BENNY CABRERA	20	ICP/0600	ICP/0600		
O-5058 TFLD	07/31	TRISTAN JAMIESON	1	BOX CREEK SPIKE CAMP/0600	BOX CREEK SPIKE CAMP/2200		
O-4 HEQB	07/24	DYLAN ARNOLD	1	BOX CREEK SPIKE CAMP/0600	BOX CREEK SPIKE CAMP/2200		
O-18 HEQB (T)	07/24	BRYCE THOMAS	1	BOX CREEK SPIKE CAMP/0600	BOX CREEK SPIKE CAMP/2200		
E-6072 ENG6 ROCKY POINT WILDFIRE	07/31	PHIL HOAG	3	BOX CREEK SPIKE CAMP/0600	BOX CREEK SPIKE CAMP/2200		
E-6073 ENG6 ROCKY POINT WILDFIRE	07/31	TONY LONGBUCCO	3	BOX CREEK SPIKE CAMP/0600	BOX CREEK SPIKE CAMP/2200		
E-6080 ENG6 WOODLAND HILLS	07/31	LANCE WOLLEBAEK	4	BOX CREEK SPIKE CAMP/0600	BOX CREEK SPIKE CAMP/2200		
E-6082 ENG6 ROCKY POINT WILDFIRE	07/31	CODY LENZ	3	BOX CREEK SPIKE CAMP/0600	BOX CREEK SPIKE CAMP/2200		
E-14 DZR2 - SUMMIT CONTRACTING LLC	07/28	JOSH BURTENSCHAW	2	BOX CREEK SPIKE CAMP/0600	BOX CREEK SPIKE CAMP/2200		
O-5064 SOF3	07/31	CHASE STRAND	1	BOX CREEK SPIKE CAMP/0600	BOX CREEK SPIKE CAMP/2200		
O-5016 EMPF	07/28	MEDIC AVERY	1	BOX CREEK SPIKE CAMP/0600	BOX CREEK SPIKE CAMP/2200		
8. Division/Group Communication Summary							
Function	Channel	RX Frequency N/W	RX Tone/NAC	TX Frequency N/W	TX Tone/NAC	Mode	
TACTICAL	4	166.7250	146.2	166.7250	146.2	A	
COMMAND	7	169.7500	146.2	167.1000	146.2	A	
COMMAND	9	169.5375	146.2	164.7125	146.2	A	
AIR TO GROUND	13	170.5000		170.5000		A	
AIR TO GROUND	14	166.3250		166.3250		A	
9. Prepared By (Resource Unit Leader)		Approved By (Planning Section Chief)			Date	Time	
SUE SOBIESKI, RESL		RHONDA TORONTO			07/19/2025	2000	

Division/Group Assignment List (ICS 204 WF)

Controlled Unclassified Information//Basic

1. Incident Name:				3.			
MONROE CANYON				III		W	
2. Operational Period: DAY/NIGHT							
Date/Time From: 07/20/2025 0600		SUN		Date/Time To: 07/21/2025 0600		MON	
4. Operations Personnel							
OPERATIONS CHIEF		JASON PORTER BRAD MIHELIC (T)		BRANCH DIRECTOR		JEFF SURBER	
DIVISION/GROUP SUPERVISOR		CHRIS WEAVER					
5. Resources Assigned this Period							
Strike Team / Task Force / Resource Designator		LWD	Leader	Number Persons	Drop Off PT./Time	Pick Up PT./Time	
6. Control Operations/Work Assignments:							
<p><u>TASK:</u> Complete dozer line at west end of Division W. Continue road prep on Koosharem Pasture Road. Work with power company and Safety to assess and mitigate powerline hazards in the area. Continue prep work on structures in Bagley area. Continue direct line construction on west end of Division W. Complete remaining dozer lines near Divisions W/Z break and along Koosharem Pasture Road.</p> <p><u>PURPOSE:</u> Protect roads, critical infrastructure, and private property from negative impacts of the fire. Minimize fire impacted areas on public lands to reasonable fire footprint based on conditions and available resources.</p> <p><u>END STATE:</u> End up with minimal impact to private property and land infrastructure that is functional and intact. Area closures lifted and fire impacts to land slowed considerably or stopped.</p>							
7. Special Instructions:							
<ul style="list-style-type: none"> Continually identify escape routes and safety zones as conditions evolve and the fire progresses. Be cautions of the many dead and down trees throughout the fire area. Watch for snags and hazard trees. Complete dozer line at west end of Division W. Continue road prep on Koosharem Pasture Road. Work with power company and Safety to assess and mitigate powerline hazards in the area. Continue prep work on structures in Bagley area. Continue direct line construction on west end of Division W. Complete remaining dozer lines near Divisions W/Z break and along Koosharem Pasture Road. Ensure to work with READs prior to any mechanical treatments or dozer operations. 							
8. Division/Group Communication Summary							
Function	Channel	RX Frequency N/W	RX Tone/NAC	TX Frequency N/W	TX Tone/NAC	Mode	
TACTICAL	4	166.7250	146.2	166.7250	146.2	A	
COMMAND	7	169.7500	146.2	167.1000	146.2	A	
COMMAND	9	169.5375	146.2	164.7125	146.2	A	
AIR TO GROUND	13	170.5000		170.5000		A	
AIR TO GROUND	14	166.3250		166.3250		A	
9. Prepared By (Resource Unit Leader)			Approved By (Planning Section Chief)			Date	
SUE SOBIESKI, RESL			RHONDA TORONTO			07/19/2025	
						2000	

Division/Group Assignment List (ICS 204 WF)
Controlled Unclassified Information//Basic

1. Incident Name:				3.			
MONROE CANYON				III		Z	
2. Operational Period: DAY/NIGHT							
Date/Time From: 07/20/2025 0600 SUN		Date/Time To: 07/21/2025 0600 MON					
4. Operations Personnel							
OPERATIONS CHIEF		JASON PORTER BRAD MIHELIC (T)		BRANCH DIRECTOR		JEFF SURBER	
DIVISION/GROUP SUPERVISOR		RYAN ERICKSON ELLIOTT ARNOLD (T)					
5. Resources Assigned this Period							
Strike Team / Task Force / Resource Designator	LWD	Leader	Number Persons	Drop Off PT./Time	Pick Up PT./Time		
C-10 CRW2 WEST COAST REFORESTATION	07/29	ANGEL FLORES	20	ICP/0600	ICP/2200		
C-7007 CRW2 TJ FORESTRY	07/28	ERIC OROZCO; VICTOR GARCIA (T)	20	ICP/0600	ICP/2200		
C-7021 CRW2 TORRES CONTRACTING	07/25	CLEMENTE JIMENEZ	20	ICP/0600	ICP/2200		
C-7022 CRW2 ALTA PACIFIC	07/26	CARLOS RAMOS (T)	20	ICP /0600	ICP/2200		
O-5026 TFLD	07/28	BODE MECHAM	1	BOX CREEK SPIKE CAMP/0600	BOX CREEK SPIKE CAMP/2200		
O-2.11 TFLD (T)	07/23	RUSSEL SHIELDS	1	BOX CREEK SPIKE CAMP/0600	BOX CREEK SPIKE CAMP/2200		
O-5059 FMO2 SOUTHWEST SAWYERS	07/31	MAX RYSER	2	BOX CREEK SPIKE CAMP/0600	BOX CREEK SPIKE CAMP/2200		
E-6102 ENG4 BLM 1421	08/01	MATHEW PISTONE	5	BOX CREEK SPIKE CAMP/0600	BOX CREEK SPIKE CAMP/2200		
E-6119 ENG4 GREAT BASIN FIRE 34	07/26	SEAN ERSKINE	3	BOX CREEK SPIKE CAMP/0600	BOX CREEK SPIKE CAMP/2200		
E-6121 ENG4 GRIZ ONE FIREFIGHTING	07/27	JOHN KRAFT	3	BOX CREEK SPIKE CAMP/0600	BOX CREEK SPIKE CAMP/2200		
E-11 ENG6 RED TRUCK 64	07/29	HECTOR MARTINEZ	3	BOX CREEK SPIKE CAMP/0600	BOX CREEK SPIKE CAMP/2200		
E-6083 ENG6 MILLER TIMBER 5113	07/31	GRAHAM BAKER	3	BOX CREEK SPIKE CAMP/0600	BOX CREEK SPIKE CAMP/2200		
E-6085 ENG6 BLAZE 08	08/01	COREY CAYWOOD	3	BOX CREEK SPIKE CAMP/0600	BOX CREEK SPIKE CAMP/2200		
O-6062 WTS2 COWBOY CONTRACTING 101	07/30	KOLE DEVER	1	BOX CREEK SPIKE CAMP/0600	BOX CREEK SPIKE CAMP/2200		
O-5009 SOF2	07/29	DARRIN FRANCO	1	BOX CREEK SPIKE CAMP/0600	BOX CREEK SPIKE CAMP/2200		
O-5018 EMPF	07/28	MEDIC BLUEHORSE	1	BOX CREEK SPIKE CAMP/0600	BOX CREEK SPIKE CAMP/2200		
8. Division/Group Communication Summary							
Function	Channel	RX Frequency N/W	RX Tone/NAC	TX Frequency N/W	TX Tone/NAC	Mode	
TACTICAL	5	166.7750	146.2	166.7750	146.2	A	
COMMAND	9	169.5375	146.2	164.7125	146.2	A	
AIR TO GROUND	13	170.5000		170.5000		A	
AIR TO GROUND	14	166.3250		166.3250		A	
9. Prepared By (Resource Unit Leader)		Approved By (Planning Section Chief)			Date	Time	
SUE SOBIESKI, RESL		RHONDA TORONTO, PSCC			07/19/2025	2000	

Division/Group Assignment List (ICS 204 WF)
Controlled Unclassified Information//Basic

1. Incident Name:				3.			
MONROE CANYON				III		Z	
2. Operational Period: DAY/NIGHT							
Date/Time From: 07/20/2025 0600 SUN		Date/Time To: 07/21/2025 0600 MON					
4. Operations Personnel							
OPERATIONS CHIEF		JASON PORTER BRAD MIHELIC (T)		BRANCH DIRECTOR		JEFF SURBER	
DIVISION/GROUP SUPERVISOR		RYAN ERICKSON ELLIOTT ARNOLD (T)					
5. Resources Assigned this Period							
Strike Team / Task Force / Resource Designator		LWD	Leader	Number Persons	Drop Off PT./Time	Pick Up PT./Time	
6. Control Operations/Work Assignments:							
<p><u>TASK:</u> Continue to mop up and secure around structures in Manning Meadows. Increase depth of secure edge. Continue to secure fire edge east of Monroe Meadows, working south. Continue to maintain any water handling elements in place around and on private property. Coordinate resource allocation with Structure Group to ensure optimal task completion and highest probability of success. Coordinate with Division W on dozer line placement.</p> <p><u>PURPOSE:</u> Limit any further damage to private property from fire impacts. Prevent any further fire growth where possible and reasonable based on conditions and available resources.</p> <p><u>END STATE:</u> To have the currently active fire edge area extinguished. Eliminate further fire impact to property. Ensure that area closures are lifted so public can return.</p>							
7. Special Instructions:							
<ul style="list-style-type: none"> Continually identify escape routes and safety zones as conditions evolve and the fire progresses. Be cautious of the many dead and down trees throughout the fire area. Watch for snags and hazard trees. Ensure to work with READs prior to any mechanical treatments or dozer operations. 							
8. Division/Group Communication Summary							
Function	Channel	RX Frequency N/W	RX Tone/NAC	TX Frequency N/W	TX Tone/NAC	Mode	
TACTICAL	5	166.7750	146.2	166.7750	146.2	A	
COMMAND	9	169.5375	146.2	164.7125	146.2	A	
AIR TO GROUND	13	170.5000		170.5000		A	
AIR TO GROUND	14	166.3250		166.3250		A	
9. Prepared By (Resource Unit Leader)		Approved By (Planning Section Chief)			Date	Time	
SUE SOBIESKI, RESL		RHONDA TORONTO, PSCC			07/19/2025	2000	

Division/Group Assignment List (ICS 204 WF)
Controlled Unclassified Information//Basic

1. Incident Name:				3.		
MONROE CANYON				Branch:	Division/Group: NIGHT	
2. Operational Period: DAY/NIGHT						
Date/Time From: 07/20/2025 0600 SUN		Date/Time To: 07/21/2025 0600 MON				
4. Operations Personnel						
OPERATIONS CHIEF		JASON PORTER BRAD MIHELIC (T)		NIGHT OPS		DANIEL GUSTAFSON
5. Resources Assigned this Period						
Strike Team / Task Force / Resource Designator	LWD	Leader	Number Persons	Drop Off PT./Time	Pick Up PT./Time	
E-6049 ENG3 361 ID-B04	07/31	JEFF HENDERSON	4	SNOW COLLEGE/1800	SNOW COLLEGE/1000	
E-6058 ENG4 STERLING FD BRUSH 141	07/29	GEDEON JARVIS	5	SNOW COLLEGE/1800	SNOW COLLEGE/1000	
E-6123 ENG4 FLAME CATCHERS 12	07/27	BRIDGER LARSEN	3	SNOW COLLEGE/1800	SNOW COLLEGE/1000	
E-6124 ENG4 DB JET 6	07/30	JAMES KRANTOCHUIL	3	SNOW COLLEGE/1800	SNOW COLLEGE/1000	
E-10 ENG6 CLEARWATER SUPPORT	07/27	JARED HATCH	3	SNOW COLLEGE/1800	SNOW COLLEGE/1000	
E-29 ENG6 HURRICANE VALLEY ENG 91	07/29	TYLER HIRSHFELD	4	SNOW COLLEGE/1800	SNOW COLLEGE/1000	
E-6087 ENG6 FIRECO E102	07/30	AVERY BURNS	3	SNOW COLLEGE/1800	SNOW COLLEGE/1000	
O-3.8 SOFC	07/28	DAN BETTS	1	SNOW COLLEGE/1800	SNOW COLLEGE/1000	
O-3.27 SOFC	07/29	DAVE MARSELLA (T)	1	SNOW COLLEGE/1800	SNOW COLLEGE/1000	
O-5021 AEMF	07/29	KATE INGLIS	1	SNOW COLLEGE/1800	SNOW COLLEGE/1000	
O-5022 AEMF	07/29	GERRIE APODACA	1	SNOW COLLEGE/1800	SNOW COLLEGE/1000	
6. Control Operations/Work Assignments:						
<p><u>TASK:</u> Patrol and monitor fire area throughout night. Patrol for flare-ups and spot fires, extinguishing where applicable. Continue day operations efforts to ensure continuity including line construction, maintaining water delivery systems, firing, holding, and structure protection. Maintain suppression presence in evacuated areas.</p> <p><u>PURPOSE:</u> Provide continuity of operations and 24/7 coverage plus maintain situational awareness of fire area 24/7 to ensure established suppression lines hold and further fire damage to private property is minimized or eliminated.</p> <p><u>END STATE:</u> Fire growth and risk has been minimized such that night time operations are no longer needed. No further impact to private property from fire. Fire kept to containment lines.</p>						
8. Division/Group Communication Summary						
Function	Channel	RX Frequency N/W	RX Tone/NAC	TX Frequency N/W	TX Tone/NAC	Mode
TACTICAL	1	168.0500	146.2	168.0500	146.2	A
COMMAND	7	169.7500	146.2	167.1000	146.2	A
COMMAND	8	170.6875	146.2	166.5750	146.2	A
COMMAND	9	169.5375	146.2	164.7125	146.2	A
AIR TO GROUND	13	170.5000		170.5000		A
9. Prepared By (Resource Unit Leader)		Approved By (Planning Section Chief)		Date		Time
HECTOR SOCIAS, RESL(T)		RHONDA TORONTO, PSSC		07/19/2025		2000

Division/Group Assignment List (ICS 204 WF)

Controlled Unclassified Information//Basic

1. Incident Name:				3.			
MONROE CANYON				Branch:		Division/Group:	
2. Operational Period: DAY/NIGHT						NIGHT	
Date/Time From: 07/20/2025 0600 SUN		Date/Time To: 07/21/2025 0600 MON					
4. Operations Personnel							
OPERATIONS CHIEF		JASON PORTER BRAD MIHELIC (T)		NIGHT OPS		DANIEL GUSTAFSON	
7. Special Instructions: <ul style="list-style-type: none"> Continually identify escape routes and safety zones as conditions evolve and the fire progresses. Be cautious of the many dead and down trees throughout the fire area. Watch for snags and hazard trees. 							
8. Division/Group Communication Summary							
Function	Channel	RX Frequency N/W	RX Tone/NAC	TX Frequency N/W	TX Tone/NAC	Mode	
TACTICAL	1	168.0500	146.2	168.0500	146.2	A	
COMMAND	7	169.7500	146.2	167.1000	146.2	A	
COMMAND	8	170.6875	146.2	166.5750	146.2	A	
COMMAND	9	169.5375	146.2	164.7125	146.2	A	
AIR TO GROUND	13	170.5000		170.5000		A	
9. Prepared By (Resource Unit Leader)			Approved By (Planning Section Chief)			Date	
HECTOR SOCIAS, RESL(T)			RHONDA TORONTO, PSCC			07/19/2025	
						Time	
						2000	



AIR OPERATIONS SUMMARY (ICS 220 WF)

1. Incident Name / Number		2. Date Prepared		3. Time Prepared		4. Prepared By	
5. Sunrise		Sunset		6. Shutdown		7. Operational Period - Date	
8. Operational Period - Time							

9. General Remarks, Safety Notes, Hazards, Air Operations Special Equipment, etc.		10. Helibase Information Name:		11. Temp. Flight Restriction (TFR) NOTAM:	
		Latitude:		Altitude:	
		Longitude:		Frequency:	
				Hours:	

13. Incident Frequencies	RX	Tone	TX	Tone	AM/FM/Digital	14. Position	Name	Phone
A/A (TFR)						AOBD		
A/A Rotor						ASGS		
A/A Briefing/Handoff						ASGS		
A/G Primary						ATGS/HLCO		
A/G Secondary								
A/G VMED						HEBM(t)		
TOLC								
Air Guard	168.6250		168.6250	110.9	FM	UAO		

12. Extraction/Medevac Information			
FAA#:	Medevac	Short-haul	Hoist
Phone:			
Location:			
Capabilities			
Request Incident Personnel Extraction/Medevac Through:			

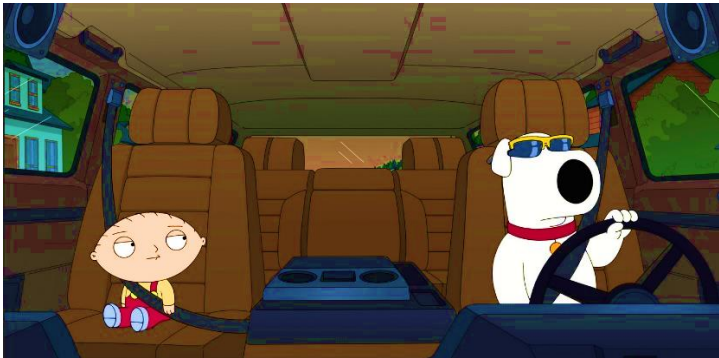
15. Equipment/Supplies

16. HELICOPTERS						
FAA #	TYPE	Make/Model	Helibase	Start	Avail.	Remarks

17. AERIAL SUPERVISION: AIR ATTACK/HELICOPTER COORDINATOR						
FAA #	Call Sign	Make/Model	Base	Start	Avail.	Remarks

18. UNMANNED AIRCRAFT SYSTEMS (UAS)							
Identifier	Cat./Type	Make/Model	Location	Start	Avail.	Leader/Contact	Remarks

SAFETY MESSAGE/PLAN (ICS 208)

1. Incident Name: Monroe Canyon	2. Operational Period: Date From: 7/20 Time From: 0600	Date To: 7/21 Time To: 0600
3. Safety Message/Expanded Safety Message, Safety Plan, Site Safety Plan: <p>Weather is expected to continue to dry out as moisture diminishes and warmer/drier conditions begin.</p> <p>Driving is one of the most hazardous things we do. We perform this task thousands of times throughout our lives without giving it a second thought. According to recent statistics, vehicle accidents are the source of more deaths and serious injuries to wildland firefighters than any other single cause.</p> <ul style="list-style-type: none"> To be a safe driver you must <i>want</i> to be one. Take a good, hard look at your driving habits. Are you training yourself to do the right things, the right way, like fastening your seat belt, checking your mirrors, and maintaining safe following distances? Inattentiveness is a major contributing factor in motor vehicle accidents within the wildland firefighting community. Since the average adult attention span is 15 to 20 minutes, we must develop techniques that allow us to refocus our attention on our driving. Many things can lure our attention away from our driving. These include; fatigue, eating and drinking, reading directions and maps, writing, cell phone and radio use, conversation within the vehicle and music. <ul style="list-style-type: none"> Drive only when you are well-rested and alert and avoid driving during the hours from 10:00 PM to 6:00 AM. Take a 10- to 15-minute break after every 2 hours. Practice situational awareness; be aware of what is happening in front, behind, and on both sides of your vehicle. Never drive when taking medications that make you drowsy. Delegate navigation and communication to a passenger or pull over. By constantly moving your vision, checking mirrors and distant road conditions, you can avoid highway hypnosis and daydreaming. Avoid eating or drinking while driving. When talking with passengers, keep your eyes on the road and both hands on the steering wheel. Avoid serious or argumentative conversations. Switch off driving with others if multiple people are in the vehicle. Don't be in a hurry; be patient. Safe driving starts with a safe vehicle. Something as simple as underinflated tires can have serious consequences. Before operating any vehicle, do a walk-around to look for potential problems. Make sure the lights and blinkers work, and adjust your seat and mirrors. If it is the first time you have driven the vehicle, make yourself aware of where everything is. <div style="text-align: center; margin: 10px 0;">  </div> <p style="text-align: center;">“We can’t change the world until we change ourselves” Christopher G.L. Wallace</p>		
4. Site Safety Plan Required? Yes <input type="checkbox"/> No <input checked="" type="checkbox"/>		
Approved Site Safety Plan(s) Located At:		
5. Prepared by: Name: <u>Izaak McHenry</u> Position/Title: <u>SOFC(t)</u> Signature: <u>/s/ Izaak McHenry</u>		
ICS 208	IAP Page <u> </u>	Date/Time: 7/19/2025 <u> </u>

Camp Conduct Expectations

We are glad to be here and look forward to working with you. The following are some of our expectations for all individuals assigned to this Incident.

TOP Priorities Include:

- **Provide for safety first**, then fight fire aggressively: Safety will be the responsibility of everyone on the Team. All of us will make safety our goal and consider firefighter and public safety the top priority in every decision we make and every action we take. Success to this team starts first and foremost with bringing every person on this incident home safely each night. (Stop, Think, Talk then Act)
- **Service to the Host Agency:** We are committed to excellence in service to the Host Agency. We will do all we can individually and collectively to meet their direction and expectations.
- **Professionalism:** We are all professional people. We will conduct ourselves accordingly on this incident and adhere to agency policies. We will meet the intent of the work- rest guidelines.
- **Respect:** We will treat all individuals associated with the incident and affected by the incident with respect. We are guests in this location, and we will act accordingly as we represent our respective agencies and organizations.

Camp Conduct Expectations:

- Alcohol and illegal drugs are prohibited in any workplace, including fire camp, spike camp and fire line.
- All individuals will follow the work-rest guidelines. All employees are expected to be back in camp and bedded down by 2200 to insure adequate rest.
- Quiet hours are 2200 – 0500. Please be considerate of others.
- Fighting, verbal altercations, or harassment will not be tolerated.
- Disruptive and illegal behavior will result in removal from the incident.
- Please keep your garbage picked up and disposed of in appropriate containers.

Thank you for your cooperation!

Brett Waters
Incident Commander



MONROE CANYON PHONE LIST

COMMAND		
Incident Commander Complex	Brett Waters	385-226-1761
Incident Commander Complex (Deputy)	Taiga Rohrer	385-475-8792
Incident Commander Complex (T)	Todd Murray	435-612-3974
Liaison Officer (LOFR)	Jeremy Robertson	435-994-1947
Liaison Officer (LOFR)	Shawn Feldner	803-983-0407
Liaison Officer (LOFR)	Lance Kovel	801413-8784
Liaison Officer (LOFR)	Larry Haydu	661-246-8475
Safety Officer Complex (SOFC)	Scott Robison	435 730 1907
Safety Officer Complex (SOFC)	Clifford McClure	605-441-2412
Medical Unit Leader (MEDL)	Tyla L Northrup	435-979-5285
Medical Unit Leader (MEDL)	Gil Blanco	775-741-9746
Medical Unit Leader (MEDL)	Marty Strand	605-890-3440
Public Information Officer Complex (PIOC)	Mary Cernicek	307-413-2481
Public Information Officer Complex (PIOC)	Toby Weed	435-757-7578
Public Information Officer (PIO3) (T)	Thomas Pence	208-851-9073
OPERATIONS / AIR OPERATIONS		
Operations Section Chief Complex (OSCC)	Daniel Cather	801-367-3732
Operations Section Chief Complex (OSCC)	Jason Porter	435-776-6693
Operations Section Chief Complex (OSCC)	Keith Murphy	906-250-1382
Operations Section Chief Complex (OSCC) (T)	Brad Mihelic	775-721-9827
Operations Section Chief Complex (OSCC) (T)	Michael Bertagnolli	435-790-1105
Operations Branch Director (OPBD)	Matt Call	801-824-3707
Operations Branch Director (OPBD)	Dan Gustafson	775-291-0437
Division/Group Supervisor (DIVS)	Trevor Hunt	435-421-2761
Division/Group Supervisor (DIVS)	Gabriel Harry	307-388-0844
Division/Group Supervisor (DIVS)	Ryan Erickson	208-421-3493
Division/Group Supervisor (DIVS)	Timothy Lavin	970-977-0049
Division/Group Supervisor (DIVS)	Joseph Williams	435-650-0576
Division/Group Supervisor (DIVS)	Chris Weaver	307-277-5062
Structure Protection Specialist	Craig Robertson	540-353-7124
Air Support Group Supervisor (ASGS)	Steven Janke	208-660-1263
PLANNING		
CHECK-IN	Leah Krandall	612-718-9368
DEMOB / Planning Section Chief Complex (PSCC)	Rose Henderson	775-720-6547
Situation Unit Leader (SITL)	Laila Lienesch	541-990-1069
Incident Meteorologist (IMET)	Chris Foltz	816-833-6299
Incident Technology Support Specialist (ITSS)	Ernest Ortiz	208-850-5839
Incident Technology Support Specialist (ITSS)	Woody Kessler	208-576-0680
Incident Training Specialist (TNSP)	Jared Peak	801-842-2496
Planning Section Chief Complex (PSCC)	Jason Braunstein	434-249-9915
Planning Section Chief Complex (PSCC)	Rhonda Toronto	208-869-5907
Planning Section Chief Complex (PSCC)	Ross Wise	702-556-9695
LOGISTICS		
Logistics Section Chief Complex (LSCC)	Kendall Nelson	435-491-0079
Logistics Section Chief Complex (LSCC)	Terry Holsclaw	435-201-4443
Facilities Unit Leader (FACL)	Clay Stewart	435-899-9479
Ground Support Unit Leader (GSUL)	Art Partridge	435-310-0122
Ground Support Unit Leader (GSUL)	Carson Gubler	435-689-0803
Supply Unit Leader (SPUL)	Douglas Robison	435-864-8930
Ordering Manager (ORDM)	Justin Short	435-633-5992
Ordering Manager (ORDM)	Scott Ziedler	385-226-7494
Communications Unit Leader (COML)	Brandon Diemer	208-841-8329
Food Unit Leader (FDUL)	Sandra Rosenkrance	970-210-5714
Security Manager (SECM)	Kreig Rasmussen	435-201-9988
FINANCE		
Finance Section Chief Complex (FSCC)	Mary Nicholson	828-508-1804
Finance Section Chief Complex (FSCC)	Mertina Randles	435-201-9539
Hospital Liaison / Compensation Claims Unit Leader (COMP)	Carla Kempen	208-993-0955

INCIDENT RADIO COMMUNICATIONS PLAN (ICS 205)

Controlled Unclassified Information//Basic

1. Incident Name:		2. Date/Time Prepared:		3. Operational Period:		DAY/NIGHT	
MONROE CANYON		Date:	07/19/2025	Date/Time From:	07/20/2025 0600	Date/Time To:	07/21/2025 0600
		Time:	0830			SUN	MON

4. Basic Radio Channel Use:										
Zone Group	Ch #	Function	Channel Name/Trunked Radio System Talkgroup	Assignment	RX Freq	RX Tone/NAC	TX Freq	TX Tone/NAC	Mode (A, D, or M)	Remarks
	1	TACTICAL	TAC 1	DIV A / G / NIGHTS	168.0500	146.2	168.0500	146.2	A	
	2	TACTICAL	TAC 2	STRUCTURE	168.2000	146.2	168.2000	146.2	A	
	3	TACTICAL	TAC 3	DIV M	168.6000	146.2	168.6000	146.2	A	
	4	TACTICAL	TAC 4	DIV W	166.7250	146.2	166.7250	146.2	A	
	5	TACTICAL	TAC 5	DIV Z	166.7750	146.2	166.7750	146.2	A	
	6	TACTICAL	TAC 6	IA	168.2500	146.2	168.2500	146.2	A	
	7	COMMAND	CMD 7	ALL DIV'S	169.7500	146.2	167.1000	146.2	A	GLENWOOD MTN
	8	COMMAND	CMD 8	ALL DIV'S	170.6875	146.2	166.5750	146.2	A	MONUMENT HILL
	9	COMMAND	CMD 9	ALL DIV'S	169.5375	146.2	164.7125	146.2	A	ABE'S KNOLL
	10	COMMAND	WHITE PINE	FS BACKUP RPT	172.2500		165.0125	110.9	A	
	11	COMMAND	TERRILL	FS BACKUP RPT	172.2500		165.0125	136.5	A	
	12	COMMAND	PARKER	FS BACKUP RPT	172.2500		165.0125	167.9	A	
	13	AIR TO GROUND	A/G PRI	A/G PRIMARY	170.5000		170.5000		A	
	14	AIR TO GROUND	A/G SEC	A/G SECONDARY	166.3250		166.3250		A	
	15	AIR TO GROUND	VMED 28	MEDIVAC	155.3400	156.7	155.3400	156.7	A	
	16	AIR GUARD	AIRGUARD	EMERGENCY	168.6250		168.6250	110.9	A	

5. Special Instructions:	

6. Prepared By	(Communications Unit Leader)	Name: RODNEY WRIGHT	Signature: /s/ Rodney Wright
ICS 205		IAP Page	Date/Time: 07/19/2025 0830

Monroe Canyon - Finance

Please turn all documents that pertain to your assignments into Finance daily.
Include your resource number in the subject line.



2025.monroecanyon.finance@firenet.gov

Phone number: 208-761-7263

Incident Number: UT-FIF-250223 / Finance Codes: P4 S5CN, 0408

Agency Overhead	Agency ADs/EFFs	VIPR Resources	Contract/Agency Crews	Cooperators
Resource Order Signed CTRs	Resource Order Casual Hire Form Signed CTRs	Resource Order VIPR Agreement Schedule of Items Inspections Signed STs	Resource Order Manifest VIPR Agreement Schedule of Items Inspections Signed STs	Resource Order Agreement Signed STs/CTRs

Comp/Claim

Property loss or damage information needed:

Email Subject line: Claims

Attachments: Completed property loss and damage reports, damage pictures, and 2 cost estimates

Monroe Canyon-Incident Training Specialist

Check in/Closeout Form —————>



Instructions:

- Fill out form entirely, ensure accurate contact information appropriate to your trainee assignment.
- If just checking in, please just fill out the form using the QR code above.
- If closing out, please send copies of the following items: task book front cover, verification/certification page (if recommended for certification), most recent evaluation record from the Monroe Canyon Fire, and a completed performance evaluation.

All documentation can be sent to jared_peak@firenet.gov, or texted to 801-842-2496

Monroe Canyon Fire – FMAG Documentation

ACTION REQUEST

The Monroe Canyon fire has been approved for a Fire Management Assistant Grant (FMAG) by FEMA. This designation requires 100% documentation of all expenses from *every agency* that supported the incident.

This process is time-consuming for both the State of Utah and all Federal partners, and we're asking for your help to make it more efficient.

What We Need from You

The USFS has created Pinyon Box to collect these documents. When you return home, please upload the following documentation to:

QR Monr.rqmcq63f0ru0fist@u.box.com (You may copy and paste address)

- **CTRs and OF-288s:** Include all hours claimed, including travel time. (*Note: Many OF-288s only shows a start time on travel days—we need documentation for all of the travel hours*)
- **Travel Vouchers:** For Federal employees and ADs. *Receipts are not required—just upload the voucher.*
- **Vehicle Utilization Reports:** For all DOI resources.
- **Purchase Card Receipts:** Copies of any receipts for purchases charged to the fire code.

Why It Matters

Providing your documentation promptly will save significant time and effort for your agency's fire business staff and ensure a smooth FMAG cost recovery for all involved.

We greatly appreciate your support!

If you have any questions, please contact us at utfmag@utah.gov.

Monroe Canyon Public Information

Fire Mailing address:
General Delivery
Monroe Canyon Fire
Koosharem, UT 84744

Getting inquiries about information related to the Monroe Canyon
Fire? Please refer them to the Fire information line:
435-280-2269

Help us tell your story.

Please send photos and videos to:

2025.monroecanyon@firenet.gov

These photos may be used on social media. As such, people in the photos need to have the full PPE required for the work being done. Please provide a brief synopsis of the photo to include- location, time, what is being done, and any other pertinent info to help tell the story. If you would like photo credit, give us your full name and we will make it happen. Thank you!

Logistics Information

Facilities at Greenwich ICP:

Showers

0500 – 1200

1400 – 2200

Meals

Breakfast 0530 – 0900

Lunch pick-up – anytime

Dinner 1800 - 2130

MONROE CANYON FIRE

UT-FIF-250223

DEMOBILIZATION CHECK-OUT PROCESS and TENTATIVE RELEASE

Please do not leave the incident until the following steps have been completed!

1. **48 hours prior** to demobilization date, please ensure that:
 - Your incident supervisor has submitted a Demob Request Form. (QR on front of IAP)
 - If you need a flight arranged for you, please submit a Flight Request Form. (QR on front of IAP)
 2. **On your demob date**, please check out with the following units.
 - Demob – pick up Form 221 to have units sign off.
 - Supply Unit – Return gear and supplies.
 - Ground Support– Return pool NERV rentals, receive inspections, etc.
 - Weed Wash – Mandatory Weed Wash for all vehicles.
 - Decon – Mandatory Decon for all internal tanks.
 - Communications Unit – Return Radios and other communications equipment.
 - Time/Finance – Ensure that all CTRs and/or shift tickets have been submitted and **you have received your final, signed OF-288 Time Report or OF-286 invoice.**
 3. **Once you have completed the above steps**, return 221 to Demob.
 4. Any questions? Contact Demob Unit Leader
 - Demob Unit Leader: (775) 720-6547, 2025.monroe.demob@firenet.gov
-

Tentative DEMOB List

DEMOB date 7/20/2025

C-5	0920	CRW2	Alta Pacific
-----	------	------	--------------

DEMOB date 7/21/2025

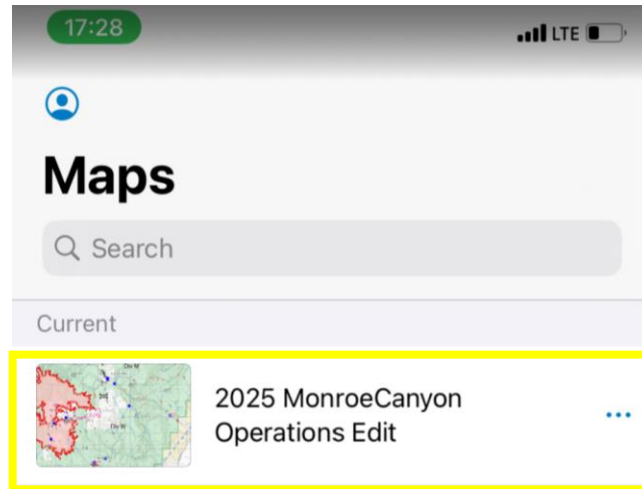
C-3	0900	CRW1	Sawtooth IHC
-----	------	------	--------------

DEMOB date 7/22/2025

C-4	0900	CRW1	Idaho City IHC
O-3.40	0700	GISS	Andrew Bailey

Attention Field Maps Users!

Please be sure that you are using the “2025 Monroe Canyon Operations Edit” field map. This map comes pre-set so that your information gets associated with our fire. Using local unit maps can result in your information getting lost, thus not making it into the operations and similar maps. If you cannot find the map, try searching for “Monroe”. If it still doesn’t show up, check with the Situation Unit to get added to the incident field maps group. You collect good information out there. Let’s make sure it is useful!



ATTN: STRUCTURE DATA COLLECTION

Use **STRUCTURE TRIAGE** when entering structure information in Field Maps.

** You may need to turn on the Structure Triage layer in your Field Maps.

Crew Swap and Extension Requests

Crew Swaps – If you need to request a crew swap please submit a request using this form.



This is NOT an extension form. Extensions can only be submitted by line supervisors. Line Supervisors work through planning OPS, resources, or check-in to submit extension requests.

ATTENTION

MONROE FIRE WATER TENDERS AND ENGINES

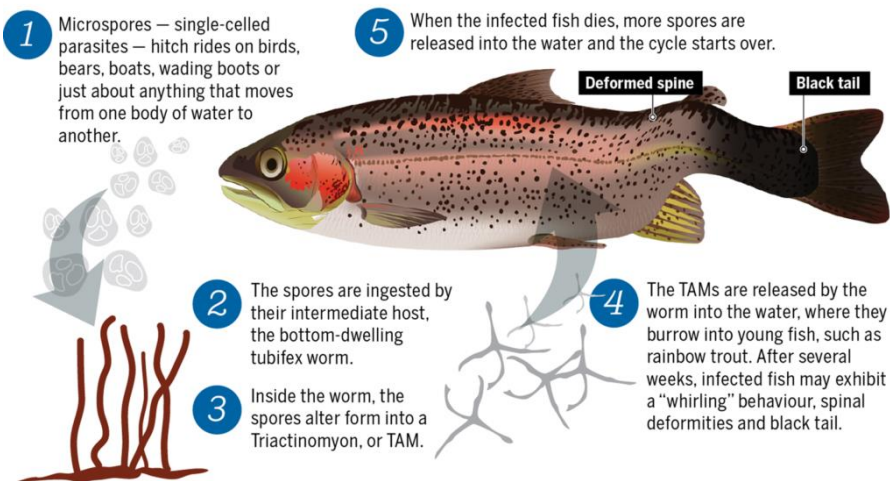
Aquatic Invasive Water

- Water Drafted out of Manning Meadows Reservoir & Box Creek Reservoirs is infested with aquatic invasive species.
- Upon De-Mob... **ALL** engines and water tenders assigned to the Monroe Creek fire incident will be required to decontaminate.
- Additionally, resources that have drafted water out of Manning and Box Creek Reservoirs will be required to decontaminate before they draft from another waterbody.
- A decontamination station has been established at the Monroe Canyon Fire SUPPLY area west of ICP in Greenwich. (Next to the weed wash)
- A decontamination station has been established so you do not transfer this water to your home unit or another area. Please be aware and prepare your time accordingly.

Decontamination procedures:

- Engines and water tenders will draft treated water (fill your tank), hold or recirculate for 10 minutes and dispense back into the treated tank.

HOW WHIRLING DISEASE INFECTS FISH

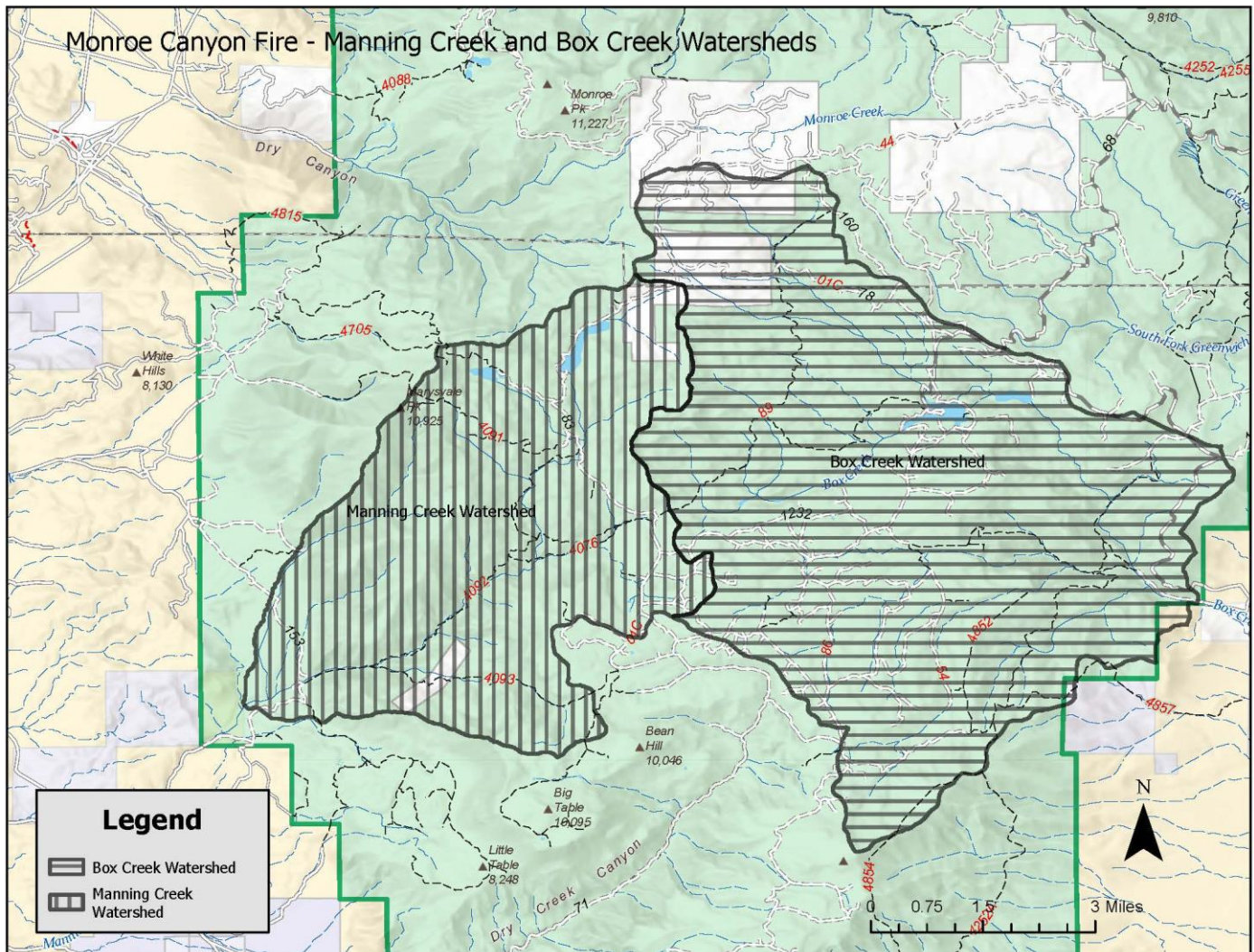


SOURCE: NEW MEXICO DEPARTMENT OF GAME AND FISH, GETTY IMAGES

DARREN FRANCEY / POSTMEDIA NEWS



Manning water stays in Manning drainage. Box Creek water stays in Box Creek Drainage. If you've drafted from Manning or Box, hit the decontamination station before drafting somewhere else.



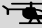



Questions? Call Resource Advisors Sean Kelly: 435-558-0396 or Jens Swensen: 435-253-1555

Thank you for helping prevent the spread of Aquatic Invasive Species!

ACTIVITY LOG (ICS 214)

1. Incident Name:		2. Operational Period: Date From: Time From:		Date To: Time To:
3. Name:		4. ICS Position:		5. Home Agency (and Unit):
6. Resources Assigned:				
Name	ICS Position		Home Agency (and Unit)	
7. Activity Log:				
Date/Time	Notable Activities			
8. Prepared by: Name: _____ Position/Title: _____ Signature: _____				
ICS 214, Page 1		Date/Time: _____		

Incident/Project Name			Operational Period				
MONROE CANYON 			07/20/2025 0600- 07/21/2025 0600				
Ambulance Services 							
Name	Complete Address		Frequency		ALS Yes No		
Sevier County Ambulance	50 Westview Drive Richfield		Richfield Dispatch		X		
Air Rescue/Air Ambulance Services 							
Name	Number	Type of Aircraft & Capability					
Classic Air Medical	Request through Richfield Dispatch	Air Ambulance					
Hospitals 							
Name Complete Address	DD° MM.MMM' N - Lat DD° MM.MMM' W - Long		ETA GRD AIR	Phone	Helipad Yes No		Level of Care
Sevier Valley Hospital 1000 N Main St Richfield, Utah	Lat:	38°46.98'N	45min 25 mins ALL TIMES ARE FROM ICP	435-893-0327	X		Level 4 Critical Care Center ER 24/7
	Long:	112°04.98'W					
Utah Valley Hospital 1034 N 500 W Provo, Utah	Lat:	40°14.78'N	135 mins 40mins ALL TIMES ARE FROM ICP	435-357-7002	X		Level 2 Trauma Center 24/7
	Long:	111°39.93'W					
University of Utah 50 N Medical Dr. Salt Lake City, Utah	Lat:	40°46.36'N	3hrs 50min ALL TIMES ARE FROM ICP	801-587-7545	X		Level 1 Trauma/Burn Center 24/7
	Long:	111°50.23'W					
Intermountain Medical Center 5121 S Cottonwood St, Murray, UT 84107	Lat:	40°39.62'N	2hrs 45min 45 min ALL TIMES ARE FROM ICP	801-533-8080	X		Level 1 Trauma Center 24/7
	Long:	111°53.38'W					
Division/Branch/ Group		Responding Medical Personnel					
ICP		EMS Personnel:		Tyla Northrup MEDL 435-979-5285 Marty Strand 605-890-3440 Gil-Blanco 775-741-9746			
		Equipment available on Scene:		ALS			
		Medical Emergency Channel:		Command			
Division A		EMS Personnel:		Ambu 2, EMT Rollins, Medic Burns			
		Equipment Available on Scene:					
		Medical Emergency Channel:					
		Approved Helispot:					
Division M		EMS Personnel:		Ambu 1, REMS 1			
		Equipment Available on Scene:		ALS			
		Medical Emergency Channel:					
		Approved Helispot:					
Division W		EMS Personnel:		Medic Avery			
		Equipment Available on Scene:					
		Medical Emergency Channel:					
		Approved Helispot:					
Division G		EMS Personnel:		Medic Lund, Medic Newman			
		Equipment Available on Scene:		ALS			
		Medical Emergency Channel:					
		Approved Helispot:					
Division Z		EMS Personnel:		Medic Bluehorse, REMS 2			
		Equipment Available on Scene:		ALS			
		Medical Emergency Channel:					
		Approved Helispot:					

Nights	EMS Personnel:		EMT Inglis, EMT Apodaca		
	Equipment Available on Scene:		BLS		
	Medical Emergency Channel:				
	Approved Helispot:				
Prepared By (Medical Unit Leader)		Date/Time	Reviewed By (Safety Officer)		Date/Time
Tyla Northrup		7/19/2025	Cliff McClure		07/19/2025

Medical Incident Report					
FOR A NON-EMERGENCY INCIDENT, WORK THROUGH CHAIN OF COMMAND TO REPORT AND TRANSPORT INJURED PERSONNEL AS NECESSARY.					
FOR A MEDICAL EMERGENCY: IDENTIFY ON SCENE INCIDENT COMMANDER BY NAME AND POSITION AND ANNOUNCE "MEDICAL EMERGENCY" TO INITIATE RESPONSE FROM ICP COMMUNICATIONS.					
Use the following items to communicate situation to ICP COMMUNICATIONS.					
1. CONTACT ICP COMMUNICATIONS: (Verify correct frequency prior to starting report) <i>Ex: "Communications, Div. Alpha. Stand-by for Emergency Traffic."</i>					
2. INCIDENT STATUS: Provide incident summary (including number of patients) and command structure. <i>Ex: "ICP Communications, I have a Red priority patient, unconscious, struck by a falling tree. Requesting air ambulance to Forest Road 1 at (Lat./Long.) This will be the Trout Meadow Medical, IC is TFLD Jones. EMT Smith is providing medical care."</i>					
Severity of Emergency / Transport Priority	<input type="checkbox"/> RED / PRIORITY 1 Life or limb threatening injury or illness. Evacuation need is IMMEDIATE <i>Ex: Unconscious, difficulty breathing, bleeding severely, 2° – 3° burns more than 4 palm sizes, heat stroke, disoriented.</i> <input type="checkbox"/> YELLOW / PRIORITY 2 Serious Injury or illness. Evacuation may be DELAYED if necessary. <i>Ex: Significant trauma, unable to walk, 2° – 3° burns not more than 1-3 palm sizes.</i> <input type="checkbox"/> GREEN / PRIORITY 3 Minor Injury or illness. Non-Emergency transport <i>Ex: Sprains, strains, minor heat-related illness.</i>				
Nature of Injury or Illness & Mechanism of Injury	Brief Summary of Injury or Illness (Ex: Unconscious, Struck by Falling Tree)				
Transport Request	Air Ambulance / Short Haul/Hoist Ground Ambulance / Other				
Patient Location	Descriptive Location & Lat. / Long. (WGS84)				
Incident Name	Geographic Name + "Medical" (Ex: Trout Meadow Medical)				
On-Scene Incident Commander	Name of on-scene IC of Incident within an Incident (Ex: TFLD Jones)				
Patient Care	Name of Care Provider (Ex: EMT Smith)				
3. INITIAL PATIENT ASSESSMENT: Complete this section for each patient as applicable (start with the most severe patient)					
Patient Assessment: See IRPG PAGE 108					
Treatment:					
4. TRANSPORT PLAN:					
Evacuation Location (if different): (Descriptive Location (drop point, intersection, etc.) or Lat. / Long.) Patient's ETA to Evacuation Location:					
Helispot / Extraction Site Size and Hazards:					
5. ADDITIONAL RESOURCES / EQUIPMENT NEEDS:					
<i>Example: Paramedic/EMT, Crews, Immobilization Devices, AED, Oxygen, Trauma Bag, IV/Fluid(s), Splints, Rope rescue, Wheeled litter, HAZMAT, Extrication</i>					
6. COMMUNICATIONS: Identify State Air/Ground EMS Frequencies and Hospital Contacts as applicable					
Function	Channel Name/Number	Receive (RX)	Tone/NAC *	Transmit (TX)	Tone/NAC *
COMMAND					
AIR-TO-GRND					
TACTICAL					
7. CONTINGENCY: Considerations: If primary options fail, what actions can be implemented in conjunction with primary evacuation method? Be thinking ahead.					
8. ADDITIONAL INFORMATION: Updates/Changes, etc.					
REMEMBER: Confirm ETA's of resources ordered. Act according to your level of training. Be Alert. Keep Calm. Think Clearly. Act Decisively.					