

# MONROE CANYON

# INCIDENT ACTION PLAN

**Sunday 27<sup>th</sup> 0600 - Monday 28<sup>th</sup> 0600**

UT-FIF-250223 / P4S5CN (0408)



Check-in/Finance/  
IAPs/Maps/DEMOB/  
Crew Swap



Incident Meeting Schedule		
0600	Day Shift Operational Briefing	ICP Briefing Area
1000	Cooperator Meeting	Snow College Conference Room
1200	Command and General Meeting	ICP Meeting Tent
1600	Tactics / Pre-Planning Meeting	ICP Operations/Resource Tent
1800	Planning Meeting	ICP Meeting Tent
1900	Night Shift Operational Briefing	ICP Briefing Area

## ACTIVITY LOG (ICS 214)

[illegible]



## INCIDENT OBJECTIVES (ICS 202)

<b>1. Incident Name:</b>		<b>2. Operational Period: DAY/NIGHT</b>	
MONROE CANYON		Date/Time From: 07/27/2025 0600	Date/Time To: 07/28/2025 0600
		SUN	MON

**3. Objective(s):**

- Ensure that firefighter and public safety are the top priority.
- Protect and minimize fire impacts to the values at risk including structures and infrastructure in threatened communities and inholdings.
  - Utilize tactics that have the highest probabilities of success, with a minimal amount of risk.
  - Strengthen relationships with stakeholders and public by providing accurate, thorough, and timely information.

**4. Operational Period Command Emphasis:**

Fire weather conditions have returned and fuel conditions have remained - Critical! Expect fire behavior to reach extreme levels if fire moves into new fuels through perimeter growth or spotting. Have your own specific plans and trigger points and communicate them for the safety of you and your people.  
 Complex firing and holding operations are being conducted. Think and communicate clearly, then act decisively.

**General Situational Awareness:**

Safety Zones... Do you know where yours are and time/travel to them?  
 Smile you are on Camera - many of the structures in the area have live feed cameras on them - act accordingly...  
 Even a small snag can have big impacts, watch for fire weakened trees.  
 Don't meet by accident, stick to the right and slow down for blind curves and hills...

**5. Site Safety Plan Required?**    Yes ☐    No ☒

**Approved Site Safety Plan(s) Located at:**

**6. Incident Action Plan**                      (the items checked below are included in this Incident Action Plan):
 

<input checked="" type="checkbox"/> ICS 202 <input checked="" type="checkbox"/> ICS 203 <input checked="" type="checkbox"/> ICS 204 <input checked="" type="checkbox"/> ICS 205 <input type="checkbox"/> ICS 205A <input checked="" type="checkbox"/> ICS 206	<input type="checkbox"/> ICS 207 <input checked="" type="checkbox"/> ICS 208 <input checked="" type="checkbox"/> ICS 220 <input type="checkbox"/> Map/Chart <input checked="" type="checkbox"/> Weather Forecast/Tides/Currents	<b>Other Attachments:</b> <input type="checkbox"/> _____ <input type="checkbox"/> _____ <input type="checkbox"/> _____ <input type="checkbox"/> _____
--	---	---

<b>7. Prepared by:</b> DAVID TAIT	<b>Position/Title:</b> RESL (T)	<b>Signature:</b> /s/ David Tait
<b>8. Approved by Incident Commander:</b>	<b>Name:</b> TODD MURRAY	<b>Signature:</b> /s/ Todd Murray
<b>ICS 202</b>	<b>IAP Page</b>	<b>Date/Time:</b> 07/26/2025 2000

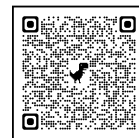
## ORGANIZATION ASSIGNMENT LIST (ICS 203)

<b>1. Incident Name:</b>		<b>2. Operational Period: DAY/NIGHT</b>	
MONROE CANYON		Date/Time From: 07/27/2025 0600      SUN	Date/Time To: 07/28/2025 0600      MON
<b>3. Incident Commander(s) and Command Staff:</b>		GROUND SUPPORT UNIT ART PARTRIDGE CARSON GUBLER	
INCIDENT COMMANDER	BRETT WATERS TODD MURRAY (T)		
DEPUTY	TAIGA ROHRER	COMMUNICATIONS UNIT BRANDON DIEMER RODNEY WRIGHT (T)	
LIAISON OFFICER	JEREMY ROBERTSON; SHAWN FELDNER; LANCE KOVEL; GUY ACUÑA LARRY HAYDU (T)		
SAFETY OFFICER	SCOTT ROBINSON; CLIFFORD MCCLURE LISA KEMPER (T); IZAAK MCHENRY (T)	FOOD UNIT SANDRA ROSENKRANCE TYSON NELSON (T)	
		SECURITY UNIT KREIG RASMUSSEN	
INFORMATION OFFICER	KATHY POLLOCK; MARY CERNICEK; CHARLES WEED; MADISON HEISER	<b>7. Operations Section:</b>	
MEDICAL UNIT	TYLA NORTHRUP		
<b>4. Agency/Organization Representative(s):</b>		OPS SECTION CHIEF JASON PORTER; BRAD MIHELIC (T)	
Agency/Organization	Name		
UTAH FFSL	THOMAS PETERSON	PLANNING OPS MATT CALL MIKE BERTAGNOLLI (T)	
USFS	JASON KLING KEN VERBONCOEUR (T)		
BLM	DAVE MORTENSEN	STRATEGIC OPS KEITH MURPHY KELLY CORNWALL	
<b>5. Planning Section:</b>		NIGHT OPS DANIEL GUSTAFSON	
CHIEF	RHONDA TORONTO; ROSE HENDERSON; ROSS WISE JASON BRAUNSTEIN; JAC LINTZENICH (T)	<b>Branch I</b>	
SITUATION UNIT	ERIC SCHMECKPEPER; LAILA LIENESCH; JAMES GARTSIDE (T)	BRANCH DIRECTOR MIKE BOWDEN	
GIS SPECIALIST	DEMETRIUS PURDIE-WILLIAMS SUKI WILDER	DIVISION/GROUP A      DAN ZACH	
FIRE BEHAVIOR ANALYST	MIKE PAGOAGA		
TECHNOLOGY SUPPORT SPECIALIST	ERNEST ORTIZ; WOODY KESSLER; MESA GREER (T)	DIVISION/GROUP D      TREVER HUNT	
INCIDENT METEOROLOGIST	CHRIS FOLTZ CALEB CRAVENS (T)		
RESOURCES UNIT	SUE SOBIESKI; SARAH BRIDGES DAVID TAIT (T); HECTOR SOCIAS (T)	DIVISION/GROUP	
DEMOBILIZATION UNIT	JAN PASSEK		
TRAINING SPECIALIST	JARED PEAK	<b>Branch II</b>	
DOCUMENTATION UNIT	AUBRI KLING	BRANCH DIRECTOR TREVOR RIDING	
<b>6. Logistics Section:</b>		DIVISION/GROUP G      GABE HARRY	
CHIEF	KENDALL NELSON; TERRY HOLSCLOW		
FACILITIES UNIT	CLAY STEWART MYRON JEFFS (T)	DIVISION/GROUP M      JOE WILLIAMS	
SUPPLY UNIT	DOUG ROBISON STEVEN O'NEIL (T)		
ORDERING MANAGER	JUSTIN SHORT SCOTT ZIEDLER	DIVISION/GROUP BEAR VALLEY CONTINGENCY STRUCTURE GROUP      TIM LAVIN; CRAIG ROBERTSON PAUL MITCHELL (T)	
		<b>Branch III</b>	
		BRANCH DIRECTOR JEFF SURBER	
DIVISION/GROUP W      CHRIS WEAVER WILL CREEDEN (T)			
		DIVISION/GROUP Z      RYAN ERICKSON ELLIOTT ARNOLD (T)	
<b>7b. Air Operations Branch:</b>			
		AIR OPS BRANCH DIRECTOR BILL HAYES	
		AIR SUPPORT SUPERVISOR STEVEN JANKE; WILL MCCUBBREY	
<b>8. Finance/Administration Section:</b>		CHIEF MARY NICHOLSON; FRAN WILSON	
		TIME UNIT ELIZABETH BEHRENDIS	
		COMPENSATION UNIT CARLA KEMPEN	
		COST UNIT CHARLES JOY	
<b>9. Prepared By:</b>			
ICS 203	IAP Page	<b>Signature:</b> /s/ David Tait	
		<b>Date/Time:</b> 07/26/2025 2000	



## Fire Weather Forecast

Link to nearby obs



**FORECAST NO:** 12  
**PREDICTION FOR:** Sunday's Operational Period  
**SHIFT DATE:** July 27, 2025  
**TIME AND DATE ISSUED:** July 26, 2025 1500

**INCIDENT:** Monroe Canyon  
**UNIT:** Fishlake NF  
**SIGNED:** **Chris Foltz** Chris Foltz  
 Incident Meteorologist (IMET)  
**Caleb Cravens** Caleb Cravens  
 Incident Meteorologist Trainee

Weather observations can be texted to 816-833-6299 or emailed to [christopher.foltz@noaa.gov](mailto:christopher.foltz@noaa.gov)

### **\*\*RED FLAG WARNING - THROUGH 9 PM TODAY\*\***

#### **Discussion:**

Another day of critical fire weather conditions with poor overnight recoveries and single digit RHs in the afternoon. Winds remain elevated with local terrain features resulting in variable wind directions and speeds, especially in dense canopies. Temperatures will remain seasonably warm for late July, with near 90 degree temperatures Monday.

#### **TODAY:**

	6,800' (ICP)	7,500'	9,500' (Magleby)
Sky/Weather	Critical Fire Weather Conditions Expected		
Max Temp	83-87°F	84-87°F	68-72°F
Min RH	8-11%	8-15%	10-15%
Wind (20 ft)	S 10-15 mph, gusts 20-30 mph	Upslope/Upvalley until 1000, then SW 12-16 mph, gusts 25-35 mph	
Chance of Lightning	0%	Chance of Wetting Rain	0%

#### **TONIGHT:**

	6,800' (ICP)	7,500'	9,500' (Magleby)
Sky/Weather	Partly Cloudy with Poor RH Recoveries		
Min Temp	48-55°F	57-60°F	50-53°F
Max RH	24-34%	20-27%	20-24%
Wind (20 ft)	Light SE	Downslope/Downvalley 6-10 mph	Downslope/Downvalley 5-9 mph, gusts to 15
Inversion	400' AGL after 2100		

#### **MONDAY:**

	6,800' (ICP)	7,500'	9,500' (Magleby)
Sky/Weather	Critical Fire Weather Conditions Expected		
Max Temp	87-90°F	87-90°F	70-75°F
Min RH	10-15%	9-12%	12-18%
Wind (20 ft)	SW 10-12 mph, gusts 20-25 mph	Upslope/Upvalley until 1000, then SW 12-16 mph, gusts 20-25 mph	
Chance of Lightning	0%	Chance of Wetting Rain	0%

**OUTLOOK FOR TUESDAY THROUGH THURSDAY:** Elevated fire weather on Tuesday, then conditions moderate somewhat through Friday. Highs will range from the 70s above 9,000' to the 80s at ICP. Overnight recoveries slightly increase into the 20s, but begin to creep into the 30s and 40s mid week. Afternoon RH values fall into the teens through Tuesday and then up to the 20s by midweek. Wind gusts ease after Tuesday with 20 mph or less through the rest of the week.

FIRE BEHAVIOR FORECAST	
FORECAST NUMBER: 11	TYPE OF FIRE: Wildland Fire
FIRE NAME: Monroe Canyon	OPERATIONAL PERIOD: 07/27 day and night
DATE ISSUED: July 26, 2025	TIME ISSUED: 1730
UNIT: UT-FIF	SIGNED: Mike Pagoaga - FBAN
WEATHER	
<p>***RED FLAG WARNING***</p> <p>Max Temp: 82 Min RH: 9%</p> <p>Wind: Terrain-driven shifting at 1000 to southwest 10-15, gusts up to 30</p> <p>Local Weather Thresholds that shout <b>WATCH OUT</b> Temperatures above 85°, Relative Humidity below 20%, Eye level winds over 10 mph</p>	
FUELS	
<p>Critically dry fuel conditions are present across Central/Southern Utah due to the ongoing drought and continuing hot and dry weather. Resistance to control is being driven by critically dry 1000-hour fuels, and drought-stressed brush and trees. As heat intensifies and fuel moistures decline further, fire potential will remain elevated across the area.</p> <p>Fuels Moistures at critical levels with 100-hour and 1000-hour dead fuel moistures below 10%. ERC is near the 98<sup>th</sup> percentile.</p>	
FIRE BEHAVIOR	
<p><b>General Fire Behavior:</b></p> <p>Active to extreme fire behavior with torching, group-torching, crown runs, and spotting. The dry conditions remain, keeping relative humidities at critical burn thresholds. Due to near record ERC values, the fire and any spot fire will show a high resistance to control. Part of the fire will be shaded out by smoke, decreasing fire behavior. Elements of extreme fire behavior can be expected. Peak fire behavior will start around 1600.</p> <p><i>Fine Dead Fuel Moisture: 3% unshaded, 5% shaded</i>  <i>Probability of Ignition 90-100%, Spotting 1/4 – 1/2 mile</i></p>	
<p><b>Specific Fire Behavior:</b></p> <p><b>BRANCH I:</b> This side of the fire will not get the benefits of smoke shading compared to other areas. Solar radiation and general winds will highly influence the fire spread into Dry Creek and toward DP 86 to the north. Shrub fuels have been drying for some time and may be more receptive as the fire continues downslope. Up-hill runs toward Manning Meadow Reservoir are possible.</p> <p><b>BRANCH II:</b> This branch of the fire has the highest potential for fire spread in the areas of Porters, Long Flat, and Glenwood Mountain. Crown runs, spotting and extreme fire behavior are forecasted throughout the branch. Smoke production can shade the area, but this will have little impact on fire intensity. Be aware of fire weakened trees and snag hazards.</p> <p><b>BRANCH III:</b> After days of activity, this Branch will see decreased fire activity compared to the others. Interior pockets of patchy or unburned will continue to be a threat today with spotting distance being up to 1/2 mile.</p> <p><b>Night:</b> Fire behavior will again be active in many areas of the fire as humidities do not recover well. Torching and short-range spotting should be expected all shift.</p>	
Safety	
<p>Due to conditions, this fire will find and burn through all available fuels. Fuel type changes seem to have little effect on fire intensity. Given the forecasts, even areas of patchy fuels will carry fire.</p>	

Controlled Unclassified Information//Basic

1. Incident Name:				3.			
MONROE CANYON				Branch:  I		Division/Group:  A	
2. Operational Period: DAY/NIGHT							
Date/Time From: 07/27/2025 0600      SUN		Date/Time To: 07/28/2025 0600      MON					
4. Operations Personnel							
OPERATIONS CHIEF		JASON PORTER BRAD MIHELIC (T)		BRANCH DIRECTOR		MIKE BOWDEN	
DIVISION/GROUP SUPERVISOR		DAN ZACH					
5. Resources Assigned this Period							
Strike Team / Task Force / Resource Designator		LWD	Leader	Number Persons	Drop Off PT./Time	Pick Up PT./Time	
C-7008 CRW2 FUEGO		07/31	SPENCER BENTLEY; RAYMOND GRIFFIN	20	SNOW COLLEGE/0600	SNOW COLLEGE/2200	
C-7010 CRW2 PR REFORESTATION		07/31	LALO ROMAS; JUAN CALDERILLA (T)	20	SNOW COLLEGE/0600	SNOW COLLEGE/2200	
O-5140 SOFC		08/02	BRUCE MALLORY	1	SNOW COLLEGE/0600	SNOW COLLEGE/2200	
O-5020 AEMF EMT		07/29	TRAVIS ROLLINS	1	SNOW COLLEGE/0600	SNOW COLLEGE/2200	
O-5106 EMPF		08/02	JAMES BURNS	1	SNOW COLLEGE/0600	SNOW COLLEGE/2200	
6. Control Operations/Work Assignments:							
<p><u>TASK:</u> Prep the Willow Springs Road to burn and/or hold the fire on the road, working south down to Durkey Springs Road. Prep Durkey Springs Road working south. Begin mastication on proposed containment line. Start prepping BLM 7934 Road from the bottom.</p> <p><u>PURPOSE:</u> Keep fire east of established containment lines to prevent western growth of the fire towards Monroe.</p> <p><u>END STATE:</u> Fire is held to established control lines and closed areas are reopened.</p>							
7. Special Instructions:							
<ul style="list-style-type: none"><li>• Use caution when working with Heavy Equipment. See Working with Heavy Equipment on p.87 of the IRPG.</li><li>• REMS 3 is a resource for all of Branch I.</li></ul>							
8. Division/Group Communication Summary							
Function	Channel	RX Frequency N/W	RX Tone/NAC	TX Frequency N/W	TX Tone/NAC	Mode	
TACTICAL	4	166.7250	146.2	166.7250	146.2	A	
COMMAND	8	170.6875	146.2	166.5750	146.2	A	
AIR TO GROUND	13	170.5000		170.5000		A	
AIR TO GROUND	14	166.3250		166.3250		A	
9. Prepared By (Resource Unit Leader)			Approved By (Planning Section Chief)		Date	Time	
SUE SOBIESKI			RHONDA TORONTO, PSCC		07/26/2025	2000	

# Division/Group Assignment List (ICS 204 WF)

Controlled Unclassified Information//Basic

<b>1. Incident Name:</b>				<b>3.</b>			
MONROE CANYON				<b>I</b>		<b>D</b>	
<b>2. Operational Period: DAY/NIGHT</b>							
Date/Time From: 07/27/2025 0600      SUN		Date/Time To: 07/28/2025 0600      MON					
<b>4. Operations Personnel</b>							
<b>OPERATIONS CHIEF</b>		JASON PORTER BRAD MIHELIC (T)		<b>BRANCH DIRECTOR</b>		MIKE BOWDEN	
<b>DIVISION/GROUP SUPERVISOR</b>		TREVER HUNT					
<b>5. Resources Assigned this Period</b>							
Strike Team / Task Force / Resource Designator		LWD	Leader	Number Persons	Drop Off PT./Time	Pick Up PT./Time	
C-7038 CRW1 BLACK MOUNTAIN IHC		08/09	MATTHEW GILL	25	SNOW COLLEGE/0600	SNOW COLLEGE/2200	
C-7015 CR2I GRAYBACK		08/01	TIM BREWER	20	SNOW COLLEGE/0600	SNOW COLLEGE/2200	
C-7011 CRW2 J & SONS		07/31	EMILIO CORIAZO	20	SNOW COLLEGE/0600	SNOW COLLEGE/2200	
O-5087 TFLD		08/01	JOE HARGER	1	SNOW COLLEGE/0600	SNOW COLLEGE/2200	
O-5088 TFLD		08/03	ANDREW BRAUN	1	SNOW COLLEGE/0600	SNOW COLLEGE/2200	
O-5099 TFLD (T)		08/03	CHARLES DAVIS	1	SNOW COLLEGE/0600	SNOW COLLEGE/2200	
O-5085 HEQB		08/02	TYLER ISHLER	1	SNOW COLLEGE/0600	SNOW COLLEGE/2200	
O-5096 HEQB (T)		08/02	WILLIAM READ	1	SNOW COLLEGE/0600	SNOW COLLEGE/2200	
E-5 ENG3 GREAT BASIN		07/30	HAL STOKER	3	SNOW COLLEGE/0600	SNOW COLLEGE/2200	
E-7 ENG3 IDAHO HEATSEEKER 22		07/30	WYATT JOHNSON; ETHAN KERSHAW (T)	3	SNOW COLLEGE/0600	SNOW COLLEGE/2200	
* E-40 ENG3 ID-PAF E412		07/31	ROTH HOLLOWAY	6	SNOW COLLEGE/0600	SNOW COLLEGE/2200	
E-6120 ENG4 IDAHO HEATSEEKER 16		07/28	CHANCE KERSTIENS	3	SNOW COLLEGE/0600	SNOW COLLEGE/2200	
E-6125 ENG4 ATLAS 402		07/28	CHASE WORKMAN	3	SNOW COLLEGE/0600	SNOW COLLEGE/2200	
* E-9 ENG6 MASWEL		07/28	SCOTT ANDERSON	3	SNOW COLLEGE/0600	SNOW COLLEGE/2200	
E-6067 ENG6 PRO TEMPS E116		07/31	MICHAEL LARSEN	3	SNOW COLLEGE/0600	SNOW COLLEGE/2200	
E-6095 DZR2 DODGE BOYS		08/03	JACOB DODGE	2	SNOW COLLEGE/0600	SNOW COLLEGE/2200	
E-6157 EXC2 EMERY FARMS		08/08	DOUGLAS ALLEN	2	SNOW COLLEGE/0600	SNOW COLLEGE/2200	
* O-5071 SOFC		07/31	LANCE ROBERTS	1	SNOW COLLEGE/0600	SNOW COLLEGE/2200	
E-6038 AMB1 ALS		07/28	GARRETT MATTHEWS	2	SNOW COLLEGE/0600	SNOW COLLEGE/2200	
<b>8. Division/Group Communication Summary</b>							
Function	Channel	RX Frequency N/W	RX Tone/NAC	TX Frequency N/W	TX Tone/NAC	Mode	
TACTICAL	6	168.2500	146.2	168.2500	146.2	A	
COMMAND	7	169.7500	146.2	167.1000	146.2	A	
COMMAND	8	170.6875	146.2	166.5750	146.2	A	
AIR TO GROUND	13	170.5000		170.5000		A	
AIR TO GROUND	14	166.3250		166.3250		A	
<b>9. Prepared By (Resource Unit Leader)</b>		<b>Approved By (Planning Section Chief)</b>			<b>Date</b>		<b>Time</b>
HECTOR SOCIAS, RESL(T)		RHONDA TORONTO, PSCC			07/26/2025		2000



## Division/Group Assignment List (ICS 204 WF)

Controlled Unclassified Information//Basic

<b>1. Incident Name:</b>				<b>3.</b>			
MONROE CANYON				<b>Branch:</b>  I		<b>Division/Group:</b>  D	
<b>2. Operational Period:</b> <b>DAY/NIGHT</b>							
Date/Time From: 07/27/2025 0600      SUN		Date/Time To: 07/28/2025 0600      MON					
<b>4. Operations Personnel</b>							
<b>OPERATIONS CHIEF</b>		JASON PORTER BRAD MIHELIC (T)		<b>BRANCH DIRECTOR</b>		MIKE BOWDEN	
<b>DIVISION/GROUP SUPERVISOR</b>		TREVER HUNT					
<b>5. Resources Assigned this Period</b>							
Strike Team / Task Force / Resource Designator		LWD	Leader	Number Persons	Drop Off PT./Time	Pick Up PT./Time	
O-5110 REMS 3 ALPINE		08/02	TEVIN PELLONI	4	SNOW COLLEGE/0600	SNOW COLLEGE/2200	
E-6104 VUTV OUTBACK FIREFIGHTING					SNOW COLLEGE/0600	SNOW COLLEGE/2200	
<b>6. Control Operations/Work Assignments:</b>							
<p><u><b>TASK:</b></u> Prep and fire the 78 Road from DP 83 Down to DP 86. Continue prep in first left-hand fork utilizing masticator. Finish installing hoselay and pump for firing if needed from Hunts Lake to Dry Canyon. Continue to patrol from Oak Flat to Hunts Lake.</p> <p><u><b>PURPOSE:</b></u> Protect private property to the west of the fire by limiting growth with containment lines. Provide highest probability of success to protect private property and Monroe City with successful, redundant suppression and mitigation efforts.</p> <p><u><b>END STATE:</b></u> Little to no impact to private property, fire kept to smallest footprint possible with given conditions. Public land damage minimized. Impact to public from fire, smoke, and suppression efforts kept to minimum.</p>							
<b>7. Special Instructions:</b>							
<ul style="list-style-type: none"> <li>* IA Resource</li> <li>Use caution when working in WUI areas and around powerlines. See <i>Wildland Urban Interface (WUI) Firefighting</i> on p. 11, and <i>Powerline Safety</i> on p. 22 of the IRPG.</li> <li>REMS 3 is a resource for all of Branch I.</li> </ul>							
<b>8. Division/Group Communication Summary</b>							
Function	Channel	RX Frequency N/W	RX Tone/NAC	TX Frequency N/W	TX Tone/NAC	Mode	
TACTICAL	6	168.2500	146.2	168.2500	146.2	A	
COMMAND	7	169.7500	146.2	167.1000	146.2	A	
COMMAND	8	170.6875	146.2	166.5750	146.2	A	
AIR TO GROUND	13	170.5000		170.5000		A	
AIR TO GROUND	14	166.3250		166.3250		A	
<b>9. Prepared By (Resource Unit Leader)</b>			<b>Approved By (Planning Section Chief)</b>			<b>Date</b>	
HECTOR SOCIAS, RESL(T)			RHONDA TORONTO, PSSC			07/26/2025	
						2000	



**Division/Group Assignment List (ICS 204 WF)**  
Controlled Unclassified Information//Basic

<b>1. Incident Name:</b>				<b>3.</b>			
MONROE CANYON				<b>II</b>		<b>G</b>	
<b>2. Operational Period: DAY/NIGHT</b>							
Date/Time From: 07/27/2025 0600      SUN		Date/Time To: 07/28/2025 0600      MON					
<b>4. Operations Personnel</b>							
<b>OPERATIONS CHIEF</b>		JASON PORTER BRAD MIHELIC (T)		<b>BRANCH DIRECTOR</b>		TREVOR RIDING	
<b>DIVISION/GROUP SUPERVISOR</b>		GABE HARRY					
<b>5. Resources Assigned this Period</b>							
Strike Team / Task Force / Resource Designator	LWD	Leader	Number Persons	Drop Off PT./Time	Pick Up PT./Time		
C-7035 CRW1 BOISE IHC	08/07	DAVE ROGAN	21	BIG LAKE SPIKE CAMP/0600	BIG LAKE SPIKE CAMP/2200		
C-7033 CR2I SOLDIER CREEK	08/04	DAYTON CLEVELAND	20	BIG LAKE SPIKE CAMP/0600	BIG LAKE SPIKE CAMP/2200		
C-7012 CRW2 G AND C FORESTRY	07/31	JHOAN DELGADO; OLMAR VERA	20	BIG LAKE SPIKE CAMP/0600	BIG LAKE SPIKE CAMP/2200		
E-6101.4 TFLD	08/01	KYLE MCQUILLIN	1	BIG LAKE SPIKE CAMP/0600	BIG LAKE SPIKE CAMP/2200		
E-61 ENG3 UT-ASF 331	08/08	MATTHEW PETTY	5	BIG LAKE SPIKE CAMP/0600	BIG LAKE SPIKE CAMP/2200		
E-6101 ENG4 BLM 1422	08/01	ALEX ARROYO	4	BIG LAKE SPIKE CAMP/0600	BIG LAKE SPIKE CAMP/2200		
E-6150 ENG4 TFD	08/05	BROGAN ALEXANDER	4	BIG LAKE SPIKE CAMP/0600	BIG LAKE SPIKE CAMP/2200		
* E-6088 ENG6 ARCHER MOUNTAIN	07/31	CALEB TORQUATO	3	BIG LAKE SPIKE CAMP/0600	BIG LAKE SPIKE CAMP/2200		
E-13 DZR2 2821	07/27	BRUCE HILLMAN	2	BIG LAKE SPIKE CAMP/0600	BIG LAKE SPIKE CAMP/2200		
E-6105 WTT1 TACTICAL TENDER 10	08/03	JOHN ABERASTURI	2	BIG LAKE SPIKE CAMP/0600	BIG LAKE SPIKE CAMP/2200		
E-36 WTS2 BLACK OPERATIONS TENDER	08/04	JAKOBEE OSBORN	1	BIG LAKE SPIKE CAMP/0600	BIG LAKE SPIKE CAMP/2200		
O-5077 SOFC	08/04	THOM COLETTI	1	BIG LAKE SPIKE CAMP/0600	BIG LAKE SPIKE CAMP/2200		
O-5066 REMS 2 NIM	07/31	WILLIAM BUCKMAN	4	BIG LAKE SPIKE CAMP/0600	BIG LAKE SPIKE CAMP/2200		
E-6155 AMBO 3	08/07	NICK KNIGHT	2	BIG LAKE SPIKE CAMP/0600	BIG LAKE SPIKE CAMP/2200		
O-5017 EMPF	07/29	JERRY LUND	1	BIG LAKE SPIKE CAMP/0600	BIG LAKE SPIKE CAMP/2200		
O-5018 EMPF	07/28	CHANCE BLUEHORSE	1	BIG LAKE SPIKE CAMP/0600	BIG LAKE SPIKE CAMP/2200		
E-6106 VUTV OUTBACK FIREFIGHTING				BIG LAKE SPIKE CAMP/0600	BIG LAKE SPIKE CAMP/2200		
E-6114 VUTV OUTBACK FIREFIGHTING				BIG LAKE SPIKE CAMP/0600	BIG LAKE SPIKE CAMP/2200		
<b>8. Division/Group Communication Summary</b>							
Function	Channel	RX Frequency N/W	RX Tone/NAC	TX Frequency N/W	TX Tone/NAC	Mode	
TACTICAL	1	168.0500	146.2	168.0500	146.2	A	
COMMAND	7	169.7500	146.2	167.1000	146.2	A	
AIR TO GROUND	13	170.5000		170.5000		A	
AIR TO GROUND	14	166.3250		166.3250		A	
<b>9. Prepared By (Resource Unit Leader)</b>		<b>Approved By (Planning Section Chief)</b>			<b>Date</b>		<b>Time</b>
HECTOR SOCIAS, RESL (T)		RHONDA TORONTO, PSCC			07/26/2025		2000

# Division/Group Assignment List (ICS 204 WF)

Controlled Unclassified Information//Basic

<b>1. Incident Name:</b>				<b>3.</b>			
MONROE CANYON				<b>II</b>		<b>G</b>	
<b>2. Operational Period: DAY/NIGHT</b>							
Date/Time From: 07/27/2025 0600      SUN		Date/Time To: 07/28/2025 0600      MON					
<b>4. Operations Personnel</b>							
<b>OPERATIONS CHIEF</b>		JASON PORTER BRAD MIHELIC (T)		<b>BRANCH DIRECTOR</b>		TREVOR RIDING	
<b>DIVISION/GROUP SUPERVISOR</b>		GABE HARRY					
<b>5. Resources Assigned this Period</b>							
Strike Team / Task Force / Resource Designator		LWD	Leader	Number Persons	Drop Off PT./Time	Pick Up PT./Time	
<b>6. Control Operations/Work Assignments:</b>							
<p><u>TASK:</u> Complete burn from Deep Lake through S. Central Pasture areas. Hold burn line. Improve structure prep.</p> <p><u>PURPOSE:</u> Protect private structures and property, preserve functionality of critical infrastructure and roadways, and minimize fire impact to recreation areas and natural resources.</p> <p><u>END STATE:</u> Private property has little to no fire impact. Area closures can be lifted and recreation areas left with minimal damage. Fire impact to land kept as minimal as possible based on conditions and resources available.</p>							
<b>7. Special Instructions:</b>							
<ul style="list-style-type: none"> <li>* IA Resources.</li> <li>Ensure to work with READs prior to any mechanical treatments or dozer operations.</li> <li>Use caution when working in WUI areas and around powerlines. See <i>Wildland Urban Interface (WUI) Firefighting</i> on p. 11, and <i>Powerline Safety</i> on p. 22 of the IRPG.</li> <li>REMS 2 is a resource for all of Branch II.</li> </ul>							
<b>8. Division/Group Communication Summary</b>							
Function	Channel	RX Frequency N/W	RX Tone/NAC	TX Frequency N/W	TX Tone/NAC	Mode	
TACTICAL	1	168.0500	146.2	168.0500	146.2	A	
COMMAND	7	169.7500	146.2	167.1000	146.2	A	
AIR TO GROUND	13	170.5000		170.5000		A	
AIR TO GROUND	14	166.3250		166.3250		A	
<b>9. Prepared By (Resource Unit Leader)</b>			<b>Approved By (Planning Section Chief)</b>		<b>Date</b>	<b>Time</b>	
HECTOR SOCIAS, RESL (T)			RHONDA TORONTO, PSSC		07/26/2025	2000	

**Division/Group Assignment List (ICS 204 WF)**  
Controlled Unclassified Information//Basic

<b>1. Incident Name:</b>				<b>3.</b>			
MONROE CANYON				<b>II</b>		<b>M</b>	
<b>2. Operational Period:</b> DAY/NIGHT							
Date/Time From: 07/27/2025 0600      SUN		Date/Time To: 07/28/2025 0600      MON					
<b>4. Operations Personnel</b>							
<b>OPERATIONS CHIEF</b>		JASON PORTER; BRAD MIHELIC (T)		<b>BRANCH DIRECTOR</b>		TREVOR RIDING	
<b>DIVISION/GROUP SUPERVISOR</b>		JOE WILLIAMS					
<b>5. Resources Assigned this Period</b>							
Strike Team / Task Force / Resource Designator		LWD	Leader	Number Persons	Drop Off PT./Time	Pick Up PT./Time	
C-7026 CRW1 CEDAR CITY IHC		08/03	JOHN HUNT	21	BOX CREEK SPIKE CAMP/0600	BOX CREEK SPIKE CAMP/2200	
C-7027 CRW1 ALTA IHC		08/03	TYLER CARRUTH; RYAN DAHL (T)	23	BOX CREEK SPIKE CAMP/0600	BOX CREEK SPIKE CAMP/2200	
C-7028 CRW1 RUBY MOUNTAIN IHC		08/04	TYLER MOLLENBERG	20	BOX CREEK SPIKE CAMP/0600	BOX CREEK SPIKE CAMP/2200	
C-7034 CRW1 LONE PEAK IHC		08/02	CHRISTIAN BERNINGER	22	BOX CREEK SPIKE CAMP/0600	BOX CREEK SPIKE CAMP/2200	
C-7017 CR2I MILLER TIMBER		07/29	DAN ALVARADO	20	ICP/0600	ICP/2200	
* O-5006 WFM2 GB LUCKY PEAK		07/29	JASON PENDLETON	8	BOX CREEK SPIKE CAMP/0600	BOX CREEK SPIKE CAMP/2200	
O-5029 TFLD		07/29	RYLEY MCBRIDE	1	BOX CREEK SPIKE CAMP/0600	BOX CREEK SPIKE CAMP/2200	
O-5006.1 TFLD (T)		07/29	JUSTIN ALESHIRE	1	BOX CREEK SPIKE CAMP/0600	BOX CREEK SPIKE CAMP/2200	
O-5084 HEQB		08/02	CHARLES SANDFORD	1	BOX CREEK SPIKE CAMP/0600	BOX CREEK SPIKE CAMP/2200	
O-5086 HEQB		08/02	NICK BEHREND	1	BOX CREEK SPIKE CAMP/0600	BOX CREEK SPIKE CAMP/2200	
E-62 ENG4 ID-TFD 2416		08/09	COLTON BATES	4	BOX CREEK SPIKE CAMP/0600	BOX CREEK SPIKE CAMP/2200	
E-6159 ENG4 DNR UT 491		08/07	TYRUS OKINISHI	5	BOX CREEK SPIKE CAMP/0600	BOX CREEK SPIKE CAMP/2200	
* E-8 ENG6 TORCH		07/27	AUSTIN EMERY	3	BOX CREEK SPIKE CAMP/0600	BOX CREEK SPIKE CAMP/2200	
E-6103 HETF UPPER VALLEY		08/03	JAMES KRUCKEBERG	7	ICP/0600	ICP/2200	
E-23 DZR2 3822		07/29	TRENT DUNCAN	2	BOX CREEK SPIKE CAMP/0600	BOX CREEK SPIKE CAMP/2200	
E-6061 WTT2 INKOM FIRE 163		07/31	ROBERT BEVAN	2	BOX CREEK SPIKE CAMP/0600	BOX CREEK SPIKE CAMP/2200	
E-6148 WTT2 T-12 FARR WEST FIRE		08/06	ISRAEL JUSTICE	2	BOX CREEK SPIKE CAMP/0600	BOX CREEK SPIKE CAMP/2200	
<b>8. Division/Group Communication Summary</b>							
Function	Channel	RX Frequency N/W	RX Tone/NAC	TX Frequency N/W	TX Tone/NAC	Mode	
TACTICAL	3	168.6000	146.2	168.6000	146.2	A	
COMMAND	7	169.7500	146.2	167.1000	146.2	A	
COMMAND	9	169.5375	146.2	164.7125	146.2	A	
AIR TO GROUND	13	170.5000		170.5000		A	
AIR TO GROUND	14	166.3250		166.3250		A	
<b>9. Prepared By (Resource Unit Leader)</b>		<b>Approved By (Planning Section Chief)</b>			<b>Date</b>	<b>Time</b>	
HECTOR SOCIAS, RESL (T)		RHONDA TORONTO, PSCC			07/26/2025	2000	

# Division/Group Assignment List (ICS 204 WF)

Controlled Unclassified Information//Basic

<b>1. Incident Name:</b>				<b>3.</b>			
MONROE CANYON				<b>II</b>		<b>M</b>	
<b>2. Operational Period:</b> <span style="float: right;"><b>DAY/NIGHT</b></span>							
Date/Time From: 07/27/2025 0600      SUN		Date/Time To: 07/28/2025 0600      MON					
<b>4. Operations Personnel</b>							
<b>OPERATIONS CHIEF</b>		JASON PORTER; BRAD MIHELIC (T)		<b>BRANCH DIRECTOR</b>		TREVOR RIDING	
<b>DIVISION/GROUP SUPERVISOR</b>		JOE WILLIAMS					
<b>5. Resources Assigned this Period</b>							
Strike Team / Task Force / Resource Designator		LWD	Leader	Number Persons	Drop Off PT./Time	Pick Up PT./Time	
E-6065 WTS2 COWBOY CONTRACTING 104		08/03	SHAWN TWITCHELL	1	BOX CREEK SPIKE CAMP/0600	BOX CREEK SPIKE CAMP/2200	
E-6097 WTS2 COLOR COUNTRY		08/04	TOMMY NEWSOME	1	BOX CREEK SPIKE CAMP/0600	BOX CREEK SPIKE CAMP/2200	
O-48 FOBS		08/03	BRIAN PIPPIN	1	BOX CREEK SPIKE CAMP/0800	BOX CREEK SPIKE CAMP/2200	
O-5008 SOF3		07/28	JUSTIN YANKEY	1	BOX CREEK SPIKE CAMP/0600	BOX CREEK SPIKE CAMP/2200	
E-6076 AMB2 ASCENT MEDICAL TRANSPORT		07/31	ARTHUR YANEZ	2	BOX CREEK SPIKE CAMP/0600	BOX CREEK SPIKE CAMP/2200	
O-5141 EMPF MEDIC POPE		08/05	TONY POPE	1	BOX CREEK SPIKE CAMP/0600	BOX CREEK SPIKE CAMP/2200	
E-6113 VUTV BACKCOUNTRY RENTALS					BOX CREEK SPIKE CAMP/0600	BOX CREEK SPIKE CAMP/2200	
E-6115 VUTV BACKCOUNTRY RENTALS					BOX CREEK SPIKE CAMP/0600	BOX CREEK SPIKE CAMP/2200	
<b>6. Control Operations/Work Assignments:</b>							
<p><u><b>TASK:</b></u> Scout control line opportunities from DP45 up to Magleby Pass Road, toward Elk Country and improve structure protection. Use heavy equipment task force to improve Koosheram Canyon Road.</p> <p><u><b>PURPOSE:</b></u> Protect private property in Magleby and Bagley Ranch areas from fire damage by stopping fire prior to incursion. Provide suppression lines to work from in the event fire threatens to impact the area. Eliminate fuels between control lines and the fire to reduce risk of extreme fire behavior.</p> <p><u><b>END STATE:</b></u> Fire growth into and onto private property is eliminated or minimized. Roadways and infrastructure are left undamaged. Closures lifted and fire impacts to public land and recreational areas minimized.</p>							
<b>7. Special Instructions:</b>							
<ul style="list-style-type: none"> <li>IA Resources. REMS 2 is a resource for all of Branch II.</li> <li>UAS module may be operating in Division M.</li> <li>Ensure positive communication with adjacent resources, especially during burnout operations.</li> <li>Use caution when working in WUI areas and around powerlines. See <i>Wildland Urban Interface (WUI) Firefighting</i> on p. 11, and <i>Powerline Safety</i> on p. 22 of the IRPG.</li> </ul>							
<b>8. Division/Group Communication Summary</b>							
Function	Channel	RX Frequency N/W	RX Tone/NAC	TX Frequency N/W	TX Tone/NAC	Mode	
TACTICAL	3	168.6000	146.2	168.6000	146.2	A	
COMMAND	7	169.7500	146.2	167.1000	146.2	A	
COMMAND	9	169.5375	146.2	164.7125	146.2	A	
AIR TO GROUND	13	170.5000		170.5000		A	
AIR TO GROUND	14	166.3250		166.3250		A	
<b>9. Prepared By (Resource Unit Leader)</b>			<b>Approved By (Planning Section Chief)</b>		<b>Date</b>	<b>Time</b>	
HECTOR SOCIAS, RESL (T)			RHONDA TORONTO, PSSC		07/26/2025	2000	

# Division/Group Assignment List (ICS 204 WF)

Controlled Unclassified Information//Basic

<b>1. Incident Name:</b>				<b>3.</b>			
MONROE CANYON				<b>II</b>		<b>STRUCTURE GROUP</b>	
<b>2. Operational Period:</b> <b>DAY/NIGHT</b>							
Date/Time From: 07/27/2025 0600      SUN		Date/Time To: 07/28/2025 0600      MON					
<b>4. Operations Personnel</b>							
<b>OPERATIONS CHIEF</b>		JASON PORTER BRAD MIHELIC (T)		<b>BRANCH DIRECTOR</b>		TREVOR RIDING	
<b>DIVISION/GROUP SUPERVISOR</b>		TIM LAVIN; CRAIG ROBERTSON PAUL MITCHELL (T)					
<b>5. Resources Assigned this Period</b>							
Strike Team / Task Force / Resource Designator		LWD	Leader	Number Persons	Drop Off PT./Time	Pick Up PT./Time	
C-7024 CRW2 FUEGO FIRE		07/31	JOSE IBARRA	20	ICP/0600	ICP/2200	
* O-3.80 TFLD		07/29	MATT CHRISTENSEN	1	ICP/0600	ICP/2200	
O-5114 TFLD (T)		08/03	JORGE ALCARAZ-LOPEZ	1	ICP/0600	ICP/2200	
E-4 ENG3 PARMA 963		07/30	JOSEPH VILLASISTA	4	SNOW COLLEGE/0600	SNOW COLLEGE/2200	
E-6 ENG3 BISON RIDGE E354		07/30	ANDREW MCCORKLE	3	SNOW COLLEGE/0600	SNOW COLLEGE/2200	
E-6075 ENG3 STAR FIRE BR51		07/30	DANIEL GARRINGER	3	ICP/0600	ICP/2200	
E-6160 ENG3 WY-BTF 341		08/08	TITUS PERKINS	5	SNOW COLLEGE/0600	SNOW COLLEGE/2200	
E-6122 ENG4 GRIZ ONE FIREFIGHTING		07/27	CORY TABER	3	ICP/0600	ICP/2200	
E-6071 ENG5 EVEREST FIRE AUTHORITY		07/30	STEVEN BOWSHER	3	SNOW COLLEGE/0600	SNOW COLLEGE/2200	
E-12 ENG6 NORTH TOOEE ENGINE 611		07/29	JASON BROWN	3	SNOW COLLEGE/0600	SNOW COLLEGE/2200	
E-6066 ENG6 NATIONAL WILDLAND FIRE		07/30	STEVEN HILLS	3	SNOW COLLEGE/0600	SNOW COLLEGE/2200	
E-6069 ENG6 WEST VALLEY 672		07/30	JED PETERS	4	SNOW COLLEGE/0600	SNOW COLLEGE/2200	
E-6074 ENG6 0463 FORT HALL BIA		07/30	JACOB ATKINS	3	ICP/0600	ICP/2200	
* E-6079 ENG6 JUAB BRUSH 12		07/30	ANDREW FROULA	4	SNOW COLLEGE/0600	SNOW COLLEGE/2200	
E-6081 ENG6 TRAILBLAZERS		08/01	RAY MOORE	3	SNOW COLLEGE/0600	SNOW COLLEGE/2200	
E-6086 ENG6 BLEDSOE FIRE		07/31	MATHEW BLEDSOE	3	SNOW COLLEGE/0600	SNOW COLLEGE/2200	
E-6060 WTT2 GREAT BASIN 1101		07/30	WESLEY SMITHSON	2	ICP/0600	ICP/2200	
E-6090 WTS2 NORTH BANNOCK FD		08/01	ADAM MATHIAS	1	SNOW COLLEGE/0600	SNOW COLLEGE/2200	
O-53 SOF3		07/30	FRANK ROTH	1	ICP/0600	ICP/2200	
<b>8. Division/Group Communication Summary</b>							
Function	Channel	RX Frequency N/W	RX Tone/NAC	TX Frequency N/W	TX Tone/NAC	Mode	
TACTICAL	2	168.2000	146.2	168.2000	146.2	A	
COMMAND	7	169.7500	146.2	167.1000	146.2	A	
COMMAND	9	169.5375	146.2	164.7125	146.2	A	
AIR TO GROUND	13	170.5000		170.5000		A	
AIR TO GROUND	14	166.3250		166.3250		A	
<b>9. Prepared By (Resource Unit Leader)</b>		<b>Approved By (Planning Section Chief)</b>			<b>Date</b>		<b>Time</b>
SUE SOBIESKI, RESL		RHONDA TORONTO, PSCC			07/26/2025		2000

## Division/Group Assignment List (ICS 204 WF)

Controlled Unclassified Information//Basic

<b>1. Incident Name:</b>				<b>3.</b>			
MONROE CANYON				<b>II</b>		<b>STRUCTURE GROUP</b>	
<b>2. Operational Period:</b> <b>DAY/NIGHT</b>							
Date/Time From: 07/27/2025 0600      SUN		Date/Time To: 07/28/2025 0600      MON					
<b>4. Operations Personnel</b>							
<b>OPERATIONS CHIEF</b>		JASON PORTER BRAD MIHELIC (T)		<b>BRANCH DIRECTOR</b>		TREVOR RIDING	
<b>DIVISION/GROUP SUPERVISOR</b>		TIM LAVIN; CRAIG ROBERTSON PAUL MITCHELL (T)					
<b>5. Resources Assigned this Period</b>							
Strike Team / Task Force / Resource Designator		LWD	Leader	Number Persons	Drop Off PT./Time	Pick Up PT./Time	
<b>6. Control Operations/Work Assignments:</b>							
<p><u><b>TASK:</b></u> Support Division M and Division G with crews and engines prepping &amp; firing near Big Lake. Maintain water handling systems. Assist other divisions as needed and be prepared to surge resources as needed.</p> <p><u><b>PURPOSE:</b></u> Protect property from further or future damage from fire. Limit fire growth. Provide needed support to other divisions with limited resources to ensure global success.</p> <p><u><b>END STATE:</b></u> Fire impact and damage to private property is slowed considerably or stopped. Area closures can be lifted. End up with minimal negative impact from active fire. Fire kept within identified containment areas.</p>							
<b>7. Special Instructions:</b>							
<ul style="list-style-type: none"> <li>* IA Resources</li> <li>Ensure positive communication when moving between divisions.</li> <li>Use caution when working in WUI areas and around powerlines. See <i>Wildland Urban Interface (WUI) Firefighting</i> on p. 11, and <i>Powerline Safety</i> on p. 22 of the IRPG.</li> <li>REMS 2 is a resource for all of Branch II.</li> </ul>							
<b>8. Division/Group Communication Summary</b>							
Function	Channel	RX Frequency N/W	RX Tone/NAC	TX Frequency N/W	TX Tone/NAC	Mode	
TACTICAL	2	168.2000	146.2	168.2000	146.2	A	
COMMAND	7	169.7500	146.2	167.1000	146.2	A	
COMMAND	9	169.5375	146.2	164.7125	146.2	A	
AIR TO GROUND	13	170.5000		170.5000		A	
AIR TO GROUND	14	166.3250		166.3250		A	
<b>9. Prepared By (Resource Unit Leader)</b>			<b>Approved By (Planning Section Chief)</b>		<b>Date</b>	<b>Time</b>	
SUE SOBIESKI, RESL			RHONDA TORONTO, PSCC		07/26/2025	2000	



# Division/Group Assignment List (ICS 204 WF)

Controlled Unclassified Information//Basic

<b>1. Incident Name:</b>				<b>3.</b>			
MONROE CANYON				<b>III</b>		<b>W</b>	
<b>2. Operational Period:</b> <b>DAY/NIGHT</b>							
Date/Time From: 07/27/2025 0600      SUN		Date/Time To: 07/28/2025 0600      MON					
<b>4. Operations Personnel</b>							
<b>OPERATIONS CHIEF</b>		JASON PORTER BRAD MIHELIC (T)		<b>BRANCH DIRECTOR</b>		JEFF SURBER	
<b>DIVISION/GROUP SUPERVISOR</b>		CHRIS WEAVER WILL CREEDEN (T)					
<b>5. Resources Assigned this Period</b>							
Strike Team / Task Force / Resource Designator		LWD	Leader	Number Persons	Drop Off PT./Time	Pick Up PT./Time	
C-7029 CRW1 REDDING IHC		08/05	DAN MALLIA	25	BOX CREEK SPIKE CAMP/1000	BOX CREEK SPIKE CAMP/0200	
C-7031 CR2I FISHLAKE REGS		08/03	GAGE BELL (T)	24	ICP/0600	ICP/2200	
C-7036 CR2I IRON MOUNTAIN		08/05	CHRIS DOUGLAS (T); MO ESQUIBEL	20	BOX CREEK SPIKE CAMP/1000	BOX CREEK SPIKE CAMP/0200	
C-7013 CRW2 ANGRY BEAR		07/31	MARTEEN SERVIN	20	ICP/0600	ICP/2200	
C-7025 CRW2 CABRERA CONTRACTING 1		07/31	BENNY CABRERA	20	ICP/0600	ICP/2200	
O-5059 FMOD SOUTHWEST SAWYERS		07/31	MAX RYDER	2	BOX CREEK SPIKE CAMP/0600	BOX CREEK SPIKE CAMP/2200	
O-5060 FMOD ALPINE FORESTRY		08/01	DAVID TELIAN	2	BOX CREEK SPIKE CAMP/0600	BOX CREEK SPIKE CAMP/2200	
O-5138 FMOD BROTHERS FIRE		08/05	MIKE WORLEY	2	BOX CREEK SPIKE CAMP/0600	BOX CREEK SPIKE CAMP/2200	
O-5139 FMOD ARTEMIS NORTHWEST		08/05	JEFF GANDEE	2	BOX CREEK SPIKE CAMP/0600	BOX CREEK SPIKE CAMP/2200	
O-5058 TFLD		07/31	TRISTAN JAMIESON	1	BOX CREEK SPIKE CAMP/0600	BOX CREEK SPIKE CAMP/2200	
O-5101 TFLD		08/02	JOHN SANDERS	1	BOX CREEK SPIKE CAMP/0600	BOX CREEK SPIKE CAMP/2200	
* E-6072 ENG6 ROCKY POINT WILDFIRE		08/01	PHIL HOAG	3	BOX CREEK SPIKE CAMP/0600	BOX CREEK SPIKE CAMP/2200	
* E-6073 ENG6 ROCKY POINT WILDFIRE		08/01	TONY LONGBUCCO	3	BOX CREEK SPIKE CAMP/0600	BOX CREEK SPIKE CAMP/2200	
E-6080 ENG6 WOODLAND HILLS		08/01	LANCE WOLLEBAEK	4	BOX CREEK SPIKE CAMP/0600	BOX CREEK SPIKE CAMP/2200	
E-6082 ENG6 ROCKY POINT WILDFIRE		07/31	CODY LENZ	3	BOX CREEK SPIKE CAMP/0600	BOX CREEK SPIKE CAMP/2200	
E-14 DZR2 SUMMIT		08/03	TOM TATMAN	2	BOX CREEK SPIKE CAMP/0600	BOX CREEK SPIKE CAMP/2200	
E-6093 DZR2 EMERY FARM		08/02	BURT ALLEY	2	ICP/0600	ICP/2200	
E-6131 CHP2 TORCH FIRE & SECURITY		08/03	ARIEL POWELL	3	ICP/0600	ICP/2200	
<b>8. Division/Group Communication Summary</b>							
Function	Channel	RX Frequency N/W	RX Tone/NAC	TX Frequency N/W	TX Tone/NAC	Mode	
TACTICAL	4	166.7250	146.2	166.7250	146.2	A	
COMMAND	7	169.7500	146.2	167.1000	146.2	A	
COMMAND	9	169.5375	146.2	164.7125	146.2	A	
AIR TO GROUND	13	170.5000		170.5000		A	
AIR TO GROUND	14	166.3250		166.3250		A	
<b>9. Prepared By (Resource Unit Leader)</b>		<b>Approved By (Planning Section Chief)</b>			<b>Date</b>		<b>Time</b>
SUE SOBIESKI, RESL		RHONDA TORONTO			07/26/2025		2000

**Division/Group Assignment List (ICS 204 WF)**  
Controlled Unclassified Information//Basic

<b>1. Incident Name:</b>				<b>3.</b>			
MONROE CANYON				<b>III</b>		<b>W</b>	
<b>2. Operational Period:</b> <b>DAY/NIGHT</b>							
Date/Time From: 07/27/2025 0600      SUN		Date/Time To: 07/28/2025 0600      MON					
<b>4. Operations Personnel</b>							
<b>OPERATIONS CHIEF</b>		JASON PORTER BRAD MIHELIC (T)		<b>BRANCH DIRECTOR</b>		JEFF SURBER	
<b>DIVISION/GROUP SUPERVISOR</b>		CHRIS WEAVER WILL CREEDEN (T)					
<b>5. Resources Assigned this Period</b>							
Strike Team / Task Force / Resource Designator		LWD	Leader	Number Persons	Drop Off PT./Time	Pick Up PT./Time	
E-6146 CHP2 J & S CONTRACTING		08/06	MONICA TOPTE	3	ICP/0600	ICP/2200	
E-6089 WTS2 HEATSEEKER		08/04	KEN FOURTNER	2	BOX CREEK SPIKE CAMP/0600	BOX CREEK SPIKE CAMP/2200	
E-6098 WTS2 ALPINE		08/03	PETE LERAS	1	BOX CREEK SPIKE CAMP/0600	BOX CREEK SPIKE CAMP/2200	
O-5064 SOF3		07/30	CHASE STRAND	1	ICP/0600	ICP/2200	
O-5023 REMS 1 NIM		07/30	RYAN LAZZERI	4	BOX CREEK SPIKE CAMP/0600	BOX CREEK SPIKE CAMP/2200	
O-5016 EMPF		07/29	JAY AVERY	1	BOX CREEK SPIKE CAMP/0600	BOX CREEK SPIKE CAMP/2200	
O-5119 EMPF		08/03	JOHN PORTZ	1	BOX CREEK SPIKE CAMP/0600	BOX CREEK SPIKE CAMP/2200	
E-6109 VUTV OUTBACK FIREFIGHTING					BOX CREEK SPIKE CAMP/0600	BOX CREEK SPIKE CAMP/2200	
<b>6. Control Operations/Work Assignments:</b> <p><b>TASK:</b> Work with power company and Safety to assess and mitigate powerline hazards. Continue to mop-up and reinforce lines around Monroe Meadows and between DP 30 and DP 35.</p> <p><b>PURPOSE:</b> Protect roads, critical infrastructure, and private property from negative impacts of the fire. Minimize fire impacted areas on public lands to reasonable fire footprint based on conditions and available resources.</p> <p><b>END STATE:</b> End up with minimal impact to private property and land infrastructure that is functional and intact. Area closures lifted and fire impacts to land slowed considerably or stopped.</p>							
<b>7. Special Instructions:</b>  <ul style="list-style-type: none"> <li>* IA Resources. REMS 1 is a resource for all of Branch III.</li> <li>Ensure positive communication with adjacent resources, especially during burnout operations.</li> <li>Use caution when working in WUI areas, around powerlines, with heavy equipment and chippers. Review a Risk Assessment or similar prior to chipping operations.</li> </ul>							
<b>8. Division/Group Communication Summary</b>							
Function	Channel	RX Frequency N/W	RX Tone/NAC	TX Frequency N/W	TX Tone/NAC	Mode	
TACTICAL	4	166.7250	146.2	166.7250	146.2	A	
COMMAND	7	169.7500	146.2	167.1000	146.2	A	
COMMAND	9	169.5375	146.2	164.7125	146.2	A	
AIR TO GROUND	13	170.5000		170.5000		A	
AIR TO GROUND	14	166.3250		166.3250		A	
<b>9. Prepared By (Resource Unit Leader)</b>			<b>Approved By (Planning Section Chief)</b>			<b>Date</b>	
SUE SOBIESKI, RESL			RHONDA TORONTO			07/26/2025	
						<b>Time</b>	
						2000	

**Division/Group Assignment List (ICS 204 WF)**  
Controlled Unclassified Information//Basic

<b>1. Incident Name:</b>				<b>3.</b>			
MONROE CANYON				<b>III</b>		<b>Z</b>	
<b>2. Operational Period: DAY/NIGHT</b>							
Date/Time From: 07/27/2025 0600      SUN		Date/Time To: 07/28/2025 0600      MON					
<b>4. Operations Personnel</b>							
<b>OPERATIONS CHIEF</b>		JASON PORTER BRAD MIHELIC (T)		<b>BRANCH DIRECTOR</b>		JEFF SURBER	
<b>DIVISION/GROUP SUPERVISOR</b>		RYAN ERICKSON ELLIOTT ARNOLD (T)					
<b>5. Resources Assigned this Period</b>							
Strike Team / Task Force / Resource Designator	LWD	Leader	Number Persons	Drop Off PT./Time	Pick Up PT./Time		
C-10 CRW2 WEST COAST REFORESTATION	07/29	ANGEL FLORES	20	ICP/0600	ICP/2200		
C-7007 CRW2 TJ FORESTRY	07/28	ERIC OROZCO; VICTOR GARCIA (T)	19	ICP/0600	ICP/2200		
C-7037 CRW2 MOJAVE	07/31	ERIC NELSEN	21	ICP/0600	ICP/2200		
O-5026 TFLD	07/28	BODE MECHAM	1	BOX CREEK SPIKE CAMP/0600	BOX CREEK SPIKE CAMP/2200		
O-2.11 TFLD (T)	07/27	RUSSEL SHIELDS	1	BOX CREEK SPIKE CAMP/0600	BOX CREEK SPIKE CAMP/2200		
* E-6102 ENG4 BLM 1421	08/01	MATHEW PISTONE	5	BOX CREEK SPIKE CAMP/0600	BOX CREEK SPIKE CAMP/2200		
* E-6121 ENG4 GRIZ ONE FIREFIGHTING	07/27	JOHN KRAFT	3	BOX CREEK SPIKE CAMP/0600	BOX CREEK SPIKE CAMP/2200		
E-11 ENG6 RED TRUCK 64	07/29	HECTOR MARTINEZ	3	BOX CREEK SPIKE CAMP/0600	BOX CREEK SPIKE CAMP/2200		
E-6083 ENG6 MILLER TIMBER 5113	07/31	GRAHAM BAKER	3	BOX CREEK SPIKE CAMP/0600	BOX CREEK SPIKE CAMP/2200		
E-6085 ENG6 BLAZE 08	07/31	COREY CAYWOOD	3	BOX CREEK SPIKE CAMP/0600	BOX CREEK SPIKE CAMP/2200		
E-6132 CHP2 FLYING V	08/04	AYRIK FISHER	3	BOX CREEK SPIKE CAMP/0600	BOX CREEK SPIKE CAMP/2200		
E-6062 WTS2 COWBOY CONTRACTING 101	08/05	JORDAN MILDON	1	BOX CREEK SPIKE CAMP/0600	BOX CREEK SPIKE CAMP/2200		
O-47 FOBS	08/02	WILLIAM MCGINLEY	1	BOX CREEK SPIKE CAMP/0600	BOX CREEK SPIKE CAMP/2200		
O-5009 SOF3	07/29	DARRIN FRANCO	1	BOX CREEK SPIKE CAMP/0600	BOX CREEK SPIKE CAMP/2200		
O-5105 EMPF	08/03	MATT EMRICH	1	BOX CREEK SPIKE CAMP/0600	BOX CREEK SPIKE CAMP/2200		
O-5120 EMPF	08/03	RICHARD DOBSON	1	BOX CREEK SPIKE CAMP/0600	BOX CREEK SPIKE CAMP/2200		
O-5142 EMPF	08/05	ADAM CASE	1	BOX CREEK SPIKE CAMP/0600	BOX CREEK SPIKE CAMP/2200		
<b>8. Division/Group Communication Summary</b>							
Function	Channel	RX Frequency N/W	RX Tone/NAC	TX Frequency N/W	TX Tone/NAC	Mode	
TACTICAL	5	166.7750	146.2	166.7750	146.2	A	
COMMAND	9	169.5375	146.2	164.7125	146.2	A	
AIR TO GROUND	13	170.5000		170.5000		A	
AIR TO GROUND	14	166.3250		166.3250		A	
<b>9. Prepared By (Resource Unit Leader)</b>		<b>Approved By (Planning Section Chief)</b>			<b>Date</b>	<b>Time</b>	
SUE SOBIESKI, RESL		RHONDA TORONTO, PSCC			07/26/2025	2000	

**Division/Group Assignment List (ICS 204 WF)**  
Controlled Unclassified Information//Basic

<b>1. Incident Name:</b>				<b>3.</b>			
MONROE CANYON				<b>III</b>		<b>Z</b>	
<b>2. Operational Period: DAY/NIGHT</b>							
Date/Time From: 07/27/2025 0600      SUN		Date/Time To: 07/28/2025 0600      MON					
<b>4. Operations Personnel</b>							
<b>OPERATIONS CHIEF</b>		JASON PORTER BRAD MIHELIC (T)		<b>BRANCH DIRECTOR</b>		JEFF SURBER	
<b>DIVISION/GROUP SUPERVISOR</b>		RYAN ERICKSON ELLIOTT ARNOLD (T)					
<b>5. Resources Assigned this Period</b>							
Strike Team / Task Force / Resource Designator		LWD	Leader	Number Persons	Drop Off PT./Time	Pick Up PT./Time	
<b>6. Control Operations/Work Assignments:</b>							
<p><u>TASK:</u> Continue to mop up and secure around structures in Manning Meadows. Increase depth of secure edge. Continue to secure fire edge east of Monroe Meadows, working south. Continue chipping along north end of structures in Monroe Meadows. Patrol contingency line from Manning Meadows to DP 62 south.</p> <p><u>PURPOSE:</u> Limit any further damage to private property from fire impacts. Prevent any further fire growth where possible and reasonable based on conditions and available resources.</p> <p><u>END STATE:</u> To have the currently active fire edge area extinguished. Eliminate further fire impact to property. Ensure that area closures are lifted so public can return.</p>							
<b>7. Special Instructions:</b>							
<ul style="list-style-type: none"> <li>* IA Resources</li> <li>Use caution when working with chippers. Review the Risk Assessment or similar prior to chipping operations.</li> <li>Ensure positive communication with adjacent resources, especially during burnout operations.</li> <li>Use caution when working in WUI areas and around powerlines.</li> <li>REMS 1 is a resource for all of Branch III.</li> </ul>							
<b>8. Division/Group Communication Summary</b>							
Function	Channel	RX Frequency N/W	RX Tone/NAC	TX Frequency N/W	TX Tone/NAC	Mode	
TACTICAL	5	166.7750	146.2	166.7750	146.2	A	
COMMAND	9	169.5375	146.2	164.7125	146.2	A	
AIR TO GROUND	13	170.5000		170.5000		A	
AIR TO GROUND	14	166.3250		166.3250		A	
<b>9. Prepared By (Resource Unit Leader)</b>		<b>Approved By (Planning Section Chief)</b>			<b>Date</b>	<b>Time</b>	
SUE SOBIESKI, RESL		RHONDA TORONTO, PSCC			07/26/2025	2000	

# Division/Group Assignment List (ICS 204 WF)

Controlled Unclassified Information//Basic

<b>1. Incident Name:</b>				<b>3.</b>			
MONROE CANYON				<b>Branch:</b>		<b>Division/Group:</b>	
<b>2. Operational Period:</b> DAY/NIGHT							
Date/Time From: 07/27/2025 0600      SUN		Date/Time To: 07/28/2025 0600      MON				<b>NIGHT</b>	
<b>4. Operations Personnel</b>							
<b>OPERATIONS CHIEF</b>		JASON PORTER BRAD MIHELIC (T)		<b>NIGHT OPS</b>		DANIEL GUSTAFSON	
<b>5. Resources Assigned this Period</b>							
Strike Team / Task Force / Resource Designator		LWD	Leader	Number Persons	Drop Off PT./Time	Pick Up PT./Time	
E-6049 ENG3 ID-BOF 361		07/31	JEFF HENDERSON	4	SNOW COLLEGE/1800	SNOW COLLEGE/1000	
E-6058 ENG4 STERLING FD BRUSH 141		07/29	GEDEON JARVIS	5	SNOW COLLEGE/1800	SNOW COLLEGE/1000	
E-6123 ENG4 FLAMECATCHERS 12		08/09	KIM PIERSOL	3	SNOW COLLEGE/1800	SNOW COLLEGE/1000	
E-10 ENG6 CLEARWATER SUPPORT		08/09	BRIAN TERRY	3	SNOW COLLEGE/1800	SNOW COLLEGE/1000	
E-29 ENG6 HURRICANE VALLEY ENG 91		07/29	TYLER HIRSHFELD	4	SNOW COLLEGE/1800	SNOW COLLEGE/1000	
E-6087 ENG6 FIRECO E102		07/31	AVERY BURNS	3	SNOW COLLEGE/1800	SNOW COLLEGE/1000	
O-3.8 SOFC		07/29	DAN BETTS	1	SNOW COLLEGE/1800	SNOW COLLEGE/1000	
O-3.27 SOFC		07/29	DAVE MARSELLA (T)	1	SNOW COLLEGE/1800	SNOW COLLEGE/1000	
O-5021 AEMF		07/29	KATE INGLIS	1	SNOW COLLEGE/1800	SNOW COLLEGE/1000	
O-5022 AEMF		07/29	GERRIE APODACA	1	SNOW COLLEGE/1800	SNOW COLLEGE/1000	
<b>6. Control Operations/Work Assignments:</b>							
<p><u>TASK:</u> Patrol and monitor fire area throughout night. Patrol for flare-ups and spot fires, extinguishing where applicable. Continue day operations efforts to ensure continuity including line construction, maintaining water delivery systems, firing, holding, and structure protection. Maintain suppression presence in evacuated areas.</p> <p><u>PURPOSE:</u> Provide continuity of operations and 24/7 coverage plus maintain situational awareness of fire area 24/7 to ensure established suppression lines hold and further fire damage to private property is minimized or eliminated.</p> <p><u>END STATE:</u> Fire growth and risk has been minimized such that night time operations are no longer needed. No further impact to private property from fire. Fire kept to containment lines.</p>							
<b>7. Special Instructions:</b>							
Use caution when working in country not seen in daylight, in WUI areas, and around powerlines. Meals will be provided at ICP.							
<b>8. Division/Group Communication Summary</b>							
Function	Channel	RX Frequency N/W	RX Tone/NAC	TX Frequency N/W	TX Tone/NAC	Mode	
TACTICAL	4	166.7250	146.2	166.7250	146.2	A	
COMMAND	7	169.7500	146.2	167.1000	146.2	A	
COMMAND	8	170.6875	146.2	166.5750	146.2	A	
COMMAND	9	169.5375	146.2	164.7125	146.2	A	
AIR TO GROUND	13	170.5000		170.5000		A	
<b>9. Prepared By (Resource Unit Leader)</b>			<b>Approved By (Planning Section Chief)</b>		<b>Date</b>		<b>Time</b>
HECTOR SOCIAS, RESL(T)			RHONDA TORONTO, PSSC		07/26/2025		2000



# AIR OPERATIONS SUMMARY (ICS 220 WF)

1. Incident Name / Number		2. Date Prepared		3. Time Prepared		4. Prepared By	
5. Sunrise		Sunset		6. Shutdown		7. Operational Period - Date	
8. Operational Period - Time							

9. General Remarks, Safety Notes, Hazards, Air Operations Special Equipment, etc.		10. Helibase Information Name:		11. Temp. Flight Restriction (TFR) NOTAM:	
		Altitude:			
		Latitude:		Frequency:	
		Longitude:		Hours:	

13. Incident Frequencies	RX	Tone	TX	Tone	AM/FM/Digital	14. Position	Name	Phone
A/A (TFR)						AOBD		
A/A Rotor						ASGS		
A/A Briefing/Handoff						ASGS		
A/G Primary						ATGS/HLCO		
A/G Secondary								
A/G VMED						ATGS		
TOLC								
Air Guard	168.6250		168.6250	110.9	FM	UAO		

12. Extraction/Medevac Information			
FAA #:	Medevac	Short-haul	Hoist
Phone:			
Location:			
Capabilities			
Request Incident Personnel Extraction/Medevac Through:			

15. Equipment/Supplies

16. HELICOPTERS						
FAA #	TYPE	Make/Model	Helibase	Start	Avail.	Remarks

17. AERIAL SUPERVISION: AIR ATTACK/HELICOPTER COORDINATOR						
FAA #	Call Sign	Make/Model	Base	Start	Avail.	Remarks

18. UNMANNED AIRCRAFT SYSTEMS (UAS)							
Identifier	Cat./Type	Make/Model	Location	Start	Avail.	Leader/Contact	Remarks

### AIR OPERATIONS SUMMARY (ICS 220 -Continuation)


<b>Incident Name/ Number</b> Monroe Canyon UT-FIF-250223		<b>Date Prepared</b> 7/26/2025	<b>Time Prepared</b> 1630	<b>Prepared By</b> Bill Hayes AOB
---	--	-----------------------------------	------------------------------	--------------------------------------

<b>Sunrise</b> 0626	<b>Sunset</b> 2044	<b>Pumpkin Time</b> 2114	<b>Shutdown</b> 2044	<b>Operational Period - Date</b> 7/27/2025	<b>Operational Period - Time</b> 0700 -2100
------------------------	-----------------------	-----------------------------	-------------------------	---	--

### SEATS, Scoopers/ Other Fixed Wing

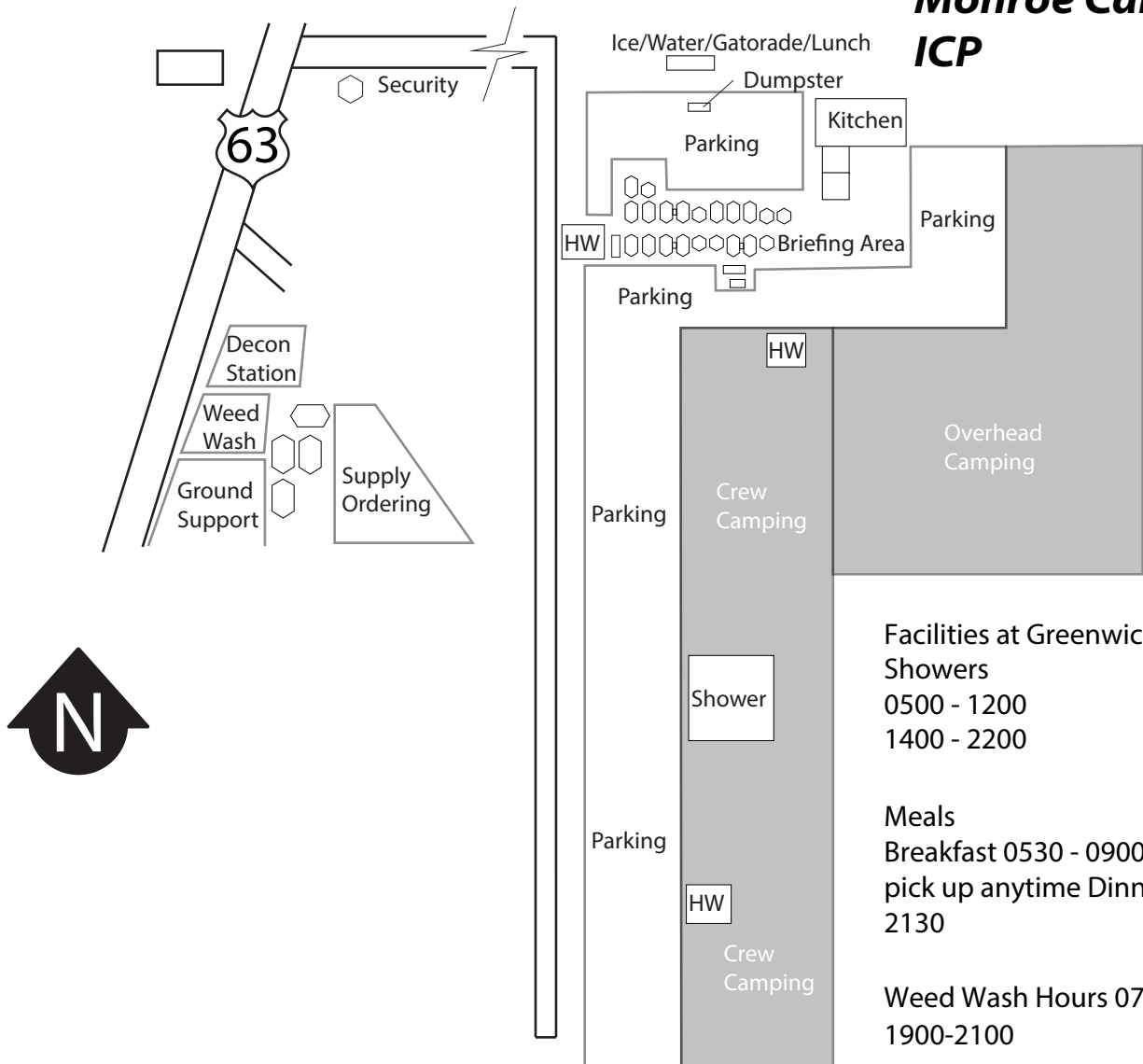
FAA#	Call Sign	Make/ Model	Base	Start	Avail.	Remarks
N811AP	S-421	802A	Richfield	0730	0800	(A-42) Scooper
N917RA	S-425	802A	Richfield	0730	0800	(A-41) Scooper
N415BT	S-281	CL-215T	Cedar City	0730	0800	(A-98) Scooper
N417BT	S-282	CL-215T	Cedar City	0730	0800	(A-99) Scooper

## SAFETY MESSAGE/PLAN (ICS 208)

<b>1. Incident Name:</b> Monroe Canyon	<b>2. Operational Period:</b> Date From: 7/27 Time From: 0600	Date To: 7/28 Time To: 0600
<b>3. Safety Message/Expanded Safety Message, Safety Plan, Site Safety Plan:</b>		
<p><b>The Red Flag Warning is extended through 2100 today and critical fire weather conditions will continue through the coming days.</b></p> <p>Critical fire weather elements that support <b>extreme fire behavior</b> can be found on p.40 in the IRPG. Ensure LCES is in place before engaging the fire.</p> <p>The Bonneville Speedway in northwestern Utah is known as the fastest place on earth. It's famous for numerous land speed records, spectacular accidents, engine failures, injuries, and fatalities. I have a good friend that races there. After suffering a catastrophic engine failure, he shared the following, "An engine doesn't generally let go when it's under a load. It lets go when you take the foot off the gas, when a small amount of play is introduced into the motor after being pushed so hard".</p> <p>It's still quite early in the fire season. As we move through the season, pay attention to your mental state. As firefighters, we suffer an increased risk for suicide.</p> <p>If you're feeling suicidal, or know someone who is, reach out. Some resources include the National Suicide Prevention Lifeline at 988 or text "START" to the Crisis Text Line at 741-741. If you don't like the phone, connect through the Lifeline Crisis Chat at <a href="https://suicidepreventionlifeline.org/chat/">https://suicidepreventionlifeline.org/chat/</a>.</p> <div style="text-align: center; margin: 20px 0;">  </div> <p style="text-align: center;">"Good done anywhere is good done everywhere" ~Maya Angelou</p>		
<b>4. Site Safety Plan Required?</b> Yes <input type="checkbox"/> No <input checked="" type="checkbox"/>		
<b>Approved Site Safety Plan(s) Located At:</b>		
<b>5. Prepared by:</b> Name: <u>Scott Robison</u> Position/Title: <u>SOFC</u> Signature: / s / <u>Scott Robison</u>		
ICS 208	IAP Page <u>      </u>	Date/Time: <u>07/26/2025</u>

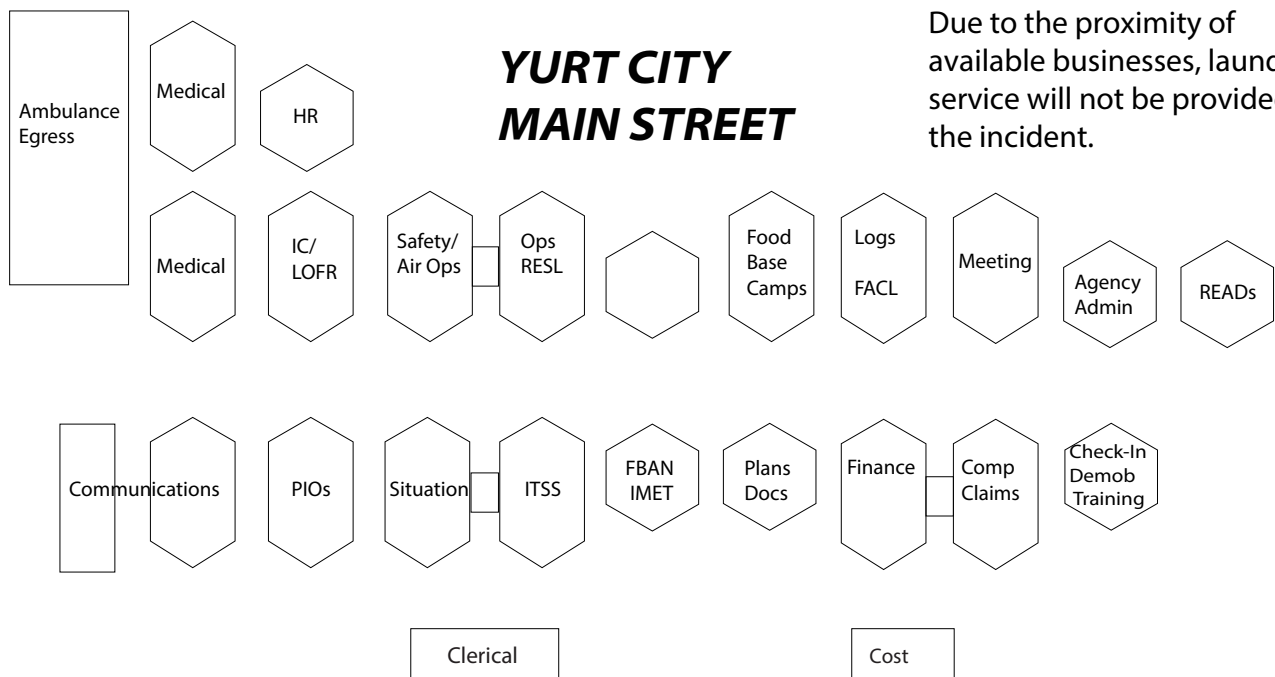


# Monroe Canyon ICP



## YURT CITY MAIN STREET

Due to the proximity of available businesses, laundry service will not be provided by the incident.



# MONROE CANYON PHONE LIST

COMMS / RADO	208-891-6581	MEDICAL	208-891-6833
PIO	208-891-6786	FINANCE	208-891-7263
ORDERING	208-891-7461	GROUND SUPPORT	208-891-6294
SUPPLY	208-891-7505		
COMMI/AND		PLANNING	
Incident Commander Complex	Brett Waters	CHECK-IN	Leah Krandall
Incident Commander Complex (Deputy)	Taiga Rohrer	DEMOB	Jan Passek
Incident Commander Complex (T)	Todd Murray	Situation Unit Leader (SITL)	Laila Lienesch
Liaison Officer (LOFR)	Jeremy Robertson	Incident Meteorologist (IMET)	Chris Foltz
Liaison Officer (LOFR)	Shawn Feldner	Incident Technology Support Specialist (ITSS)	Ernest Ortiz
Liaison Officer (LOFR)	Lance Kovel	Incident Technology Support Specialist (ITSS)	Woody Kessler
Liaison Officer (LOFR)	Larry Haydu	Incident Training Specialist (TNSP)	Jared Peak
Liaison Officer (LOFR)	Guy Acuña	Planning Section Chief Complex (PSCC)	Jason Braunstein
Safety Officer Complex (SOFC)	Scott Robison	Planning Section Chief Complex (PSCC)	Rhonda Toronto
Safety Officer Complex (SOFC)	Clifford McClure	Planning Section Chief Complex (PSCC)	Ross Wise
Medical Unit Leader (MEDL)	Tyla L Northrup	Planning Section Chief Complex (PSCC)	Rose Henderson
Medical Unit Leader (MEDL)	Gil Blanco	LOGISTICS	
Medical Unit Leader (MEDL)	Marty Strand	Logistics Section Chief Complex (LSCC)	Kendall Nelson
Public Information Officer Complex (PIOC)	Mary Cernicek	Logistics Section Chief Complex (LSCC)	Terry Holsclaw
Public Information Officer Complex (PIOC)	Toby Weed	Facilities Unit Leader (FACL)	Clay Stewart
Public Information Officer (PIO3) (T)	Thomas Pence	Ground Support Unit Leader (GSUL)	Art Partridge
		Ground Support Unit Leader (GSUL)	Carson Gubler
OPERATIONS / AIR OPERATIONS		Supply Unit Leader (SPUL)	Douglas Robison
Operations Section Chief Complex (OSCC)	Daniel Cather	Ordering Manager (ORDM)	Justin Short
Operations Section Chief Complex (OSCC)	Jason Porter	Ordering Manager (ORDM)	Scott Ziedler
Operations Section Chief Complex (OSCC)	Keith Murphy	Communications Unit Leader (COML)	Brandon Diemer
Operations Section Chief Complex (OSCC) (T)	Brad Mihelic	Food Unit Leader (FDUL)	Sandra Rosenkrance
Operations Section Chief Complex (OSCC) (T)	Michael Bertagnolli	Security Manager (SECM)	Kreig Rasmussen
Operations Branch Director (OPBD)	Matt Call	FINANCE	
Operations Branch Director (OPBD)	Dan Gustafson	Finance Section Chief Complex (FSCC)	Mary Nicholson
Division/Group Supervisor (DIVS)	Trevor Hunt	Finance Section Chief Complex (FSCC)	Mertina Randles
Division/Group Supervisor (DIVS)	Gabriel Harry	Hospital Liaison / Compensation Claims (COMP)	Carla Kempen
Division/Group Supervisor (DIVS)	Ryan Erickson		
Division/Group Supervisor (DIVS)	Timothy Lavin		
Division/Group Supervisor (DIVS)	Joseph Williams		
Division/Group Supervisor (DIVS)	Chris Weaver		
Division/Group Supervisor (DIVS)	Andy Pascarella		
Division/Group Supervisor (DIVS)	Dan Zach		
Structure Protection Specialist	Craig Robertson		
Air Support Group Supervisor (ASGS)	Steven Janke		

# INCIDENT RADIO COMMUNICATIONS PLAN (ICS 205)

## Controlled Unclassified Information//Basic

1. Incident Name:		2. Date/Time Prepared:		3. Operational Period:		DAY/NIGHT	
MONROE CANYON		Date: 07/26/2025 Time: 0824	Date/Time From: 07/27/2025 0600	SUN	Date/Time To: 07/28/2025 0600	MON	

4. Basic Radio Channel Use:										
Zone Group	Ch #	Function	Channel Name/Trunked Radio System Talkgroup	Assignment	RX Freq	RX Tone/NAC	TX Freq	TX Tone/NAC	Mode (A,D, or M)	Remarks
	1	TACTICAL	TAC 1	DIV G	168.0500	146.2	168.0500	146.2	A	
	2	TACTICAL	TAC 2	STRUCTURE	168.2000	146.2	168.2000	146.2	A	
	3	TACTICAL	TAC 3	DIV M	168.6000	146.2	168.6000	146.2	A	
	4	TACTICAL	TAC 4	DIV A / W / SWING/ NIGHTS	166.7250	146.2	166.7250	146.2	A	
	5	TACTICAL	TAC 5	DIV Z	166.7750	146.2	166.7750	146.2	A	
	6	TACTICAL	TAC 6	DIV D / BEAR VLY	168.2500	146.2	168.2500	146.2	A	
	7	COMMAND	CMD 7	ALL DIV'S	169.7500	146.2	167.1000	146.2	A	GLENWOOD MTN
	8	COMMAND	CMD 8	ALL DIV'S	170.6875	146.2	166.5750	146.2	A	MONUMENT HILL
	9	COMMAND	CMD 9	ALL DIV'S	169.5375	146.2	164.7125	146.2	A	ABE'S KNOLL
	10	COMMAND	WHT PINE	BRANCH I IA	172.2500		165.0125	110.9	A	FS BACKUP RPTR
	11	COMMAND	TERRILL	FS BACKUP RPT	172.2500		165.0125	136.5	A	
	12	COMMAND	PARKER	BRANCH II & III IA	172.2500		165.0125	167.9	A	FS BACKUP RPTR
	13	AIR TO GROUND	A/G PRI	A/G PRIMARY	170.5000		170.5000		A	
	14	AIR TO GROUND	A/G SEC	A/G SECONDARY	166.3250		166.3250		A	
	15	AIR TO GROUND	VMED 28	MEDIVAC	155.3400	156.7	155.3400	156.7	A	
	16	AIR GUARD	AIRGUARD	EMERGENCY	168.6250		168.6250	110.9	A	

5. Special Instructions:	

6. Prepared By	(Communications Unit Leader)	Name: RODNEY WRIGHT	Signature: /s/ Rodney Wright
ICS 205		IAP Page	Date/Time: 07/26/2025 0824

# Monroe Canyon - Finance

Please turn all documents that pertain to your assignments into Finance daily.  
Include your resource number in the subject line.



[2025.monroecanyon.finance@firenet.gov](mailto:2025.monroecanyon.finance@firenet.gov)

**Phone number: 208-761-7263**

**Incident Number: UT-FIF-250223 / Finance Codes: P4 S5CN, 0408**

Agency Overhead	Agency ADs/EFFs	VIPR Resources	Contract/Agency Crews	Cooperators
Resource Order Signed CTRs	Resource Order Casual Hire Form Signed CTRs	Resource Order VIPR Agreement Schedule of Items Inspections Signed STs	Resource Order Manifest VIPR Agreement Schedule of Items Inspections Signed STs	Resource Order Agreement Signed STs/CTR

## Comp/Claim

Property loss or damage information needed:

Email Subject line: Claims

Attachments: Completed property loss and damage reports, damage pictures, and 2 cost estimates

## Monroe Canyon-Incident Training Specialist

**Check in/Closeout Form** —————→



### Instructions:

- Fill out form entirely, ensure accurate contact information appropriate to your trainee assignment.
- If just checking in, please just fill out the form using the QR code above.
- If closing out, please send copies of the following items: task book front cover, verification/certification page (if recommended for certification), most recent evaluation record from the Monroe Canyon Fire, and a completed performance evaluation.

All documentation can be sent to [jared\\_peak@firenet.gov](mailto:jared_peak@firenet.gov), or texted to 801-842-2496

# Public Information

Fire Mailing address:

**\*Include Name & Resource Number\***

General Delivery

Monroe Canyon Fire

Koosharem, UT 84744

**Getting inquiries about information related to the Monroe Canyon Fire? Please refer them to the Fire information line:  
435-280-2269**

**Help us tell your story.**

Please send photos and videos to:

2025.monroecanyon@firenet.gov

These photos may be used on social media. As such, people in the photos need to have the full PPE required for the work being done. Please provide a brief synopsis of the photo to include- location, time, what is being done, and any other pertinent info to help tell the story. If you would like photo credit, give us your full name and we will make it happen. Thank you!

**Lost and Found is located in the Public Information shop.**

---

## Human Resource Message

### BE GOOD TO YOURSELF

Be yourself.....truthfully.

Accept yourself.....honestly.

Value yourself.....joyfully.

Forgive yourself.....completely.

Treat yourself.....generously.

Balance yourself.....harmoniously.

Bless yourself.....abundantly.

Trust yourself.....confidently.

Love yourself.....wholeheartedly.

Empower yourself.....prayerfully.

Give yourself.....enthusiastically.

Express yourself.....radiantly.

-Anonymous

The best way to learn to be good to yourself is to practice being good to others. Practice mutual respect!  
Be willing to give, take and share

Sherry Neal-Human Resource Specialists

## DEMOBILIZATION CHECK-OUT PROCESS and TENTATIVE RELEASE

Please do not leave the incident until the following steps have been completed!

- If you need a flight arranged for you, please contact Demob at 907-382-2912 or Email: [2025.monroe.demob@firenet.gov](mailto:2025.monroe.demob@firenet.gov) 72 hrs before your Demob date
1. **On your demob date**, please check out with the following units.
    - Demob – pick up Form 221 to have units sign off.
    - Supply Unit – Return gear and supplies.
    - Ground Support– Return pool NERV rentals, receive inspections, etc.
    - Weed Wash – Mandatory Weed Wash for all vehicles.
    - Decon – Mandatory Decon for all internal tanks.
    - Communications Unit – Return Radios and other communications equipment.
    - Time/Finance – Ensure that all CTRs and/or shift tickets have been submitted and **you have received your final, signed OF-288 Time Report or OF-286 invoice.**
  2. **Once you have completed the above steps**, return 221 to Demob.
  3. Any questions? Contact Demob Unit Leader
    - Demob Unit Leader: (907)382-2912, [2025.monroe.demob@firenet.gov](mailto:2025.monroe.demob@firenet.gov)

---

### Tentative DEMOB List

#### DEMOB date 7/27/2025

C-7016	0700	CR2I	Flathead NF Crew
C-7022	0730	CRW2	Alta Pacific
E-20	0800	ENG6	UTFIF Engine 642
E-6118	0700	ENG3	Ketchum FD Wildfire
E-6119	0730	ENG4	Great Basin Fire
O-49	0730	PIO3	Liston, Breanne

#### DEMOB date 7/28/2025

E-6121	0700	ENG4	Griz One Firefighting
E-6122	0730	ENG4	Griz One Firefighting
E-8	0800	ENG6	Torch Fire and Security
E-13	0830	DZR2	Dozer 2821
E-6123	0930	ENG4	Firecatchers
E-6091	1000	ENG4	Salina VFD 3U608
E-6092	1000	ENG6	Salina VFD 3U607

O-2.11	0830	TFLD	Shields, Russell
O-10	0700	REAF	Kelly, Sean
O-5037	0730	REAF	Ferrer, Nykalos
O-5078	0800	SECM	Crane, Mace
O-5113	0815	SEC1	Dalton, Luke
O-5036	0830	REAF	Lay, Cresson
O-5039	0845	REAF	Norris, Hunter

**DEMOB date 7/29/2025**

E-10	0730	ENG6	Clearwater Fire Support
E-14	0700	DZR2	Summit Contracting
E-23	0900	DZR2	IDIFD 3822
E-6038	0930	AMB1	Kaysville FD A63 ALS
E-6120	0830	ENG4	Idaho Heatseeker
E-6125	0800	ENG4	DM Fire Solutions
O-3	0600	CIMT	Great Basin Team 3
O-5035	0930	BCMG	Bascom, Graydon
O-5042	0915	DRIV	Carter, Jessa May
O-20	0900	COMT	Cornelius, James Vance
O-5012	0745	SEC1	Dobrinski, Kayla
O-5018	0700	EMPF	Frontline EMS LLC
O-5029	0800	TFLD	McBride, Ryley
O-5026	0815	TFLD	Mecham, Bode
O-5017	0830	EMPF	Spear Spur Fire Support
O-5016	0845	EMPF	Spear Spur Fire Support
O-5008	0730	SOF3	Yankey, Justin

## **MONROE CANYON FIRE WATER TENDERS AND ENGINES**

### **Aquatic Invasive Species Decontamination Protocol for Demob**

Water drafted from the Monroe Canyon fire is contaminated with Aquatic Invasive Species.

**Decontamination will need to occur before demobing and going to another incident.**

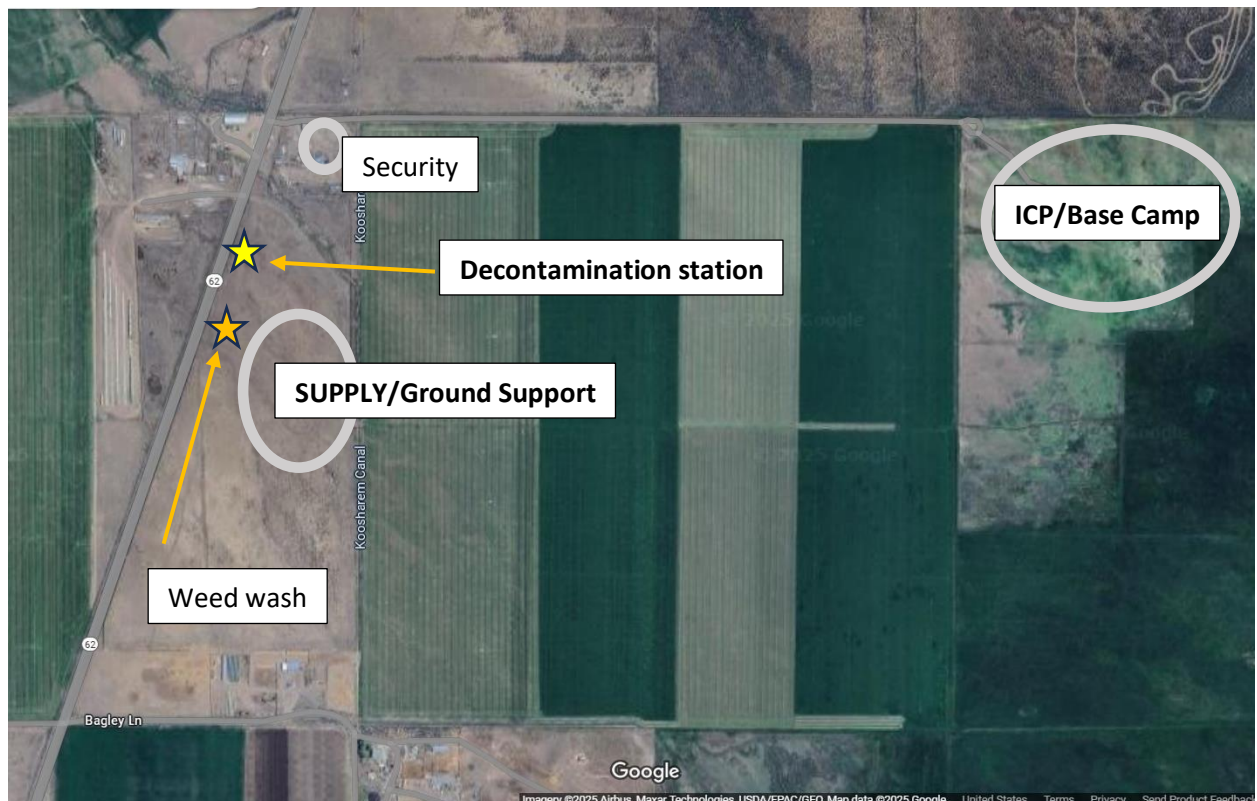
**Location:** the decontamination station is located at **SUPPLY/Ground Support** - west of Base Camp in Greenwich, UT (next to weed wash).

**Hours of operation:** 0700 – 2000

**Resource Advisor Team contacts:** Jens Swensen 435-253-1555 or Evando Vega 435-896-7657

#### **Process:**

1. Engines should arrive at the decontamination station empty (empty your tank in dry areas away from streams, canals, wetlands, lakes, reservoirs, etc.)
2. Draft disinfectant into engines and/or tenders. Soak foot valves in disinfectant tank
3. Wait 10 minutes for solution to kill aquatic invasive species
4. After 10 minutes the disinfectant can be released back into the disinfectant tank.
5. Draft rinse water into your tank with then dump it back into the rinse tanks. Do this three times to thoroughly rinse your tank. Soak your foot valves in rinse water.
6. Congratulations! You are now decontaminated. Staff will sign your demob checklist.





**INCIDENT LINE SUPPLY ORDER FORM**  
(OSC/Division Supervisors only)

<b>Date &amp; Time Order Was Placed</b>	<b>Order Reference #</b> (Div + #)	<b>Mode of Delivery</b> (Ground/Helo/Pickup @)	<b>Location for Delivery</b> (Division/LZ/DP Lat/Long)
<b>DATE:</b>		(Select one) <b>GROUND SUPPORT</b>	
<b>TIME:</b>		<b>HELICOPTER</b> (Include Elevation) <b>TO</b> <b>BE PICKED UP BY @</b>	
<b>DATE NEEDED:</b>	<b>Time Needed:</b>	<b>Contact:</b>	<b>Phone:</b>
		<b>Position:</b>	

<b>Order received in COMMUNICATIONS by:</b>	<b>Name:</b>	<b>Time:</b>
<b>Order received in SUPPLY by:</b>	<b>Name:</b>	<b>Time:</b>
<b>Order received in FOOD UNIT by:</b>	<b>Name:</b>	<b>Time:</b>
<b>Order received in GROUND SUPPORT by:</b>	<b>Name:</b>	<b>Time:</b>
<b>Order received in HELIBASE by:</b>	<b>Name:</b>	<b>Time:</b>
<b>Order delivered/ shipped to final location by:</b>	<b>Name:</b>	<b>Time:</b>

#	QUANTITY	ITEM	SHIPPED	PENDING	#	QUANTITY	ITEM	SHIPPED	PENDING
1		Breakfast-Meals			31		Lightweight Pump & Kit		
2		Lunch-Meals			32		Hose-1 1/2" - ft		
3		Dinner-Meals			33		Hose-1" - ft		
4		MRE's(#of Cases) 12/cs			34		Hose-3/4" - ft		
5		Cubies of Water - ea			35		Reducer-1 1/2" X 1" - ea		
6		Bottled Water-Case			36		Reducer-1" X 3/4" -ea		
7		Gatorade-Case			37		Gated "Y"-1 1/2" - ea		
8		Batteries-AA/box 24 - ea			38		Gated "Y"-1" - ea		
9		Batteries-AAA/C/D - ea			39		Shut off valve 3/4" - ea		
10		Fuel-Unleaded-Gallons			40		In-Line Tee 1 1/2" X 1" - ea		
11		Fuel-Diesel-Gallons			41		Nozzle- 1 1/2" - ea		
12		Bar oil-QTs/Gallons			42		Nozzle- 1" - ea		
13		2 cycle oil-(1/gallon)			43		Nozzle 3/4" - ea		
14		Sleeping Bags-25 degree			44		First Aid Kit-20 man - ea		
15		Sleeping Bags-40 degree			45		Chainsaw Kit - ea		
16		Plastic-roll / sqft			46		1000' Hose Lay Kit (next page) - ea		
17		Parachute Cord-roll/ft			47		Division Hose lay Kit (next page) - ea		
18		Shovels - ea.							
19		Pulaski - ea.							
20		Combi - ea.					MISC. Please list below		
21		McLeod - ea.							
22		Fussee - case							
23		Drip Torch - ea							
24		Backpack Pump-Full/Empty							
25		Slingable Blivet-Suppression							
26		Slingable Blivet-Drinking							
27		Folding Tank 1000/1500/1800 gals					Accountable Property #'s		
28		Pumpkin 3000/4500 gals							
29		Mark III Pump & Kit							
30		Volume Pump & Kit							

GPS Datum: NAD 83

GPS Format Example: 115° 17.489"

**Team Ordering / Timeline Process:**

0600 – Morning Briefing, start of crew time.

1500 – DIVS to have next days resource order ready for OPS.

1600 – Last call to change spike camp resource (food, fuel, etc.) location.

- All crew level orders will be placed through DIVS
- DIVS will place all orders through Communications Unit
- All orders will be traced using the process found on the front of form

#46 1000' Hose Lay Kit			#47 Division Hose Lay Kit		
ITEM	NFES#	Quantity	ITEM	NFES#	Quantity
Hose 1 1/2"	1239	1000'	Hose 1 1/2"	1239	3500'
Hose 1"	1238	1000'	Hose 1"	1238	1700'
Hose 3/4"	1016	500'	Hose 3/4"	1016	3000'
Tee, 1 1/2" – 1"	0731	4	Tee, 1 1/2" – 1"	0731	15
Nozzle, 1"	0138	4	Nozzle, 1"	0138	15
Nozzle, 3/4"	0136	4	Nozzle, 3/4"	0136	30
1 1/2" Gated "Y"	0231	4	Valve, 1 1/2" Gated "Y"	0231	5
1" Gated "Y"	2059	4	Valve, 1" Gated "Y"	2059	2
3/4" Gated "Y"	0272	4	Valve, 3/4" Gated "Y"	0272	30
Reducers, 1 1/2" – 1"	0010	4	Shut off valve 3/4"	0738	20
Reducers, 1" – 3/4"	0733	4	Reducers, 1 1/2" – 1"	0010	10
Double Female 1"	0710	1	Reducers, 1" – 3/4"	0733	10
Double Female 1 1/2"	0857	1	Double Female 1"	0710	1
			Double Female 1 1/2"	0857	1







## ACTIVITY LOG (ICS 214)

[illegible]

## ACTIVITY LOG (ICS 214)

[illegible]

Incident/Project Name			Operational Period					
<b>MONROE CANYON</b> 			07/27/2025 0600- 07/28/2025 0600					
Ambulance Services 								
Name	Complete Address		Frequency		ALS			
					Yes	No		
Sevier County Ambulance	50 Westview Drive Richfield		Richfield Dispatch		X			
Air Rescue/Air Ambulance Services 								
Name	Number	Type of Aircraft & Capability						
Classic Air Medical	Request through Richfield Dispatch	Air Ambulance						
Hospitals 								
Name Complete Address	DD° MM.MMM' N - Lat DD° MM.MMM' W - Long		ETA GRD AIR		Phone	Helipad Yes No		Level of Care
Sevier Valley Hospital 1000 N Main St Richfield, Utah	Lat:	38°46.98'N	45min 25 mins ALL TIMES ARE FROM ICP		435-893-0327	X		Level 4 Critical Care Center ER 24/7
	Long:	112°04.98'W						
Utah Valley Hospital 1034 N 500 W Provo, Utah	Lat:	40°14.78'N	135 mins 40mins ALL TIMES ARE FROM ICP		435-357-7002	X		Level 2 Trauma Center 24/7
	Long:	111°39.93'W						
University of Utah 50 N Medical Dr. Salt Lake City, Utah	Lat:	40°46.36'N	3hrs 50min ALL TIMES ARE FROM ICP		801-587-7545	X		Level 1 Trauma/Burn Center 24/7
	Long:	111°50.23'W						
Intermountain Medical Center 5121 S Cottonwood St, Murray, UT 84107	Lat:	40°39.62'N	2hrs 45min 45 min ALL TIMES ARE FROM ICP		801-533-8080	X		Level 1 Trauma Center 24/7
	Long:	111°53.38'W						
Division/Branch/ Group		Responding Medical Personnel						
<b>ICP</b>		EMS Personnel:		Tyla Northrup MEDL 435-979-5285 Marty Strand 605-890-3440 Gil-Blanco 775-741-9746				
		Equipment available on Scene:		ALS				
		Medical Emergency Channel:		Command				
<b>Division D</b>		EMS Personnel:		Ambu 1, REMS 3				
		Equipment Available on Scene:		ALS				
		Medical Emergency Channel:		Command 7				
		Approved Helispot:		H-20				
<b>Division A</b>		EMS Personnel:		Medic Burns, EMT Rollins				
		Equipment Available on Scene:		ALS				
		Medical Emergency Channel:		Command 8				
		Approved Helispot:						
<b>Division M</b>		EMS Personnel:		Ambu 2, Medic Pope				
		Equipment Available on Scene:		ALS				
		Medical Emergency Channel:		Command 7				
		Approved Helispot:		H-15				
<b>Division W</b>		EMS Personnel:		Medic Avery, Medic Portz, REMS 1				
		Equipment Available on Scene:		ALS				
		Medical Emergency Channel:		Command 7				
		Approved Helispot:		H-12				
<b>Division G</b>		EMS Personnel:		Medic Lund, Medic Bluehorse, REMS 2, Ambu 3				
		Equipment Available on Scene:		ALS				
		Medical Emergency Channel:		Command 7				
		Approved Helispot:		H-30, H-40				

Division Z	EMS Personnel:		Medic Dobson, Medic Emrich, Medic Case		
	Equipment Available on Scene:		ALS		
	Medical Emergency Channel:		Command 9		
	Approved Helispot:		H-10		
Nights	EMS Personnel:		EMT Inglis, EMT Apodaca		
	Equipment Available on Scene:		BLS		
	Medical Emergency Channel:		Command 7		
	Approved Helispot:		H-12		
Prepared By (Medical Unit Leader)		Date/Time	Reviewed By (Safety Officer)		Date/Time
Tyla Northrup		7/26/2025	Izaak McHenry		07/26/2025

Medical Incident Report					
<b>FOR A NON-EMERGENCY INCIDENT, WORK THROUGH CHAIN OF COMMAND TO REPORT AND TRANSPORT INJURED PERSONNEL AS NECESSARY.</b>					
<b>FOR A MEDICAL EMERGENCY: IDENTIFY ON SCENE INCIDENT COMMANDER BY NAME AND POSITION AND ANNOUNCE "MEDICAL EMERGENCY" TO INITIATE RESPONSE FROM ICP COMMUNICATIONS.</b>					
<b>Use the following items to communicate situation to ICP COMMUNICATIONS.</b>					
<b>1. CONTACT ICP COMMUNICATIONS:</b> (Verify correct frequency prior to starting report) <i>Ex: "Communications, Div. Alpha. Stand-by for Emergency Traffic."</i>					
<b>2. INCIDENT STATUS:</b> Provide incident summary (including number of patients) and command structure. <i>Ex: "ICP Communications, I have a Red priority patient, unconscious, struck by a falling tree. Requesting air ambulance to Forest Road 1 at (Lat./Long.) This will be the Trout Meadow Medical, IC is TFLD Jones. EMT Smith is providing medical care."</i>					
Severity of Emergency / Transport Priority	<input type="checkbox"/> <b>RED / PRIORITY 1 Life or limb threatening injury or illness. Evacuation need is IMMEDIATE</b> <i>Ex: Unconscious, difficulty breathing, bleeding severely, 2° – 3° burns more than 4 palm sizes, heat stroke, disoriented.</i> <input type="checkbox"/> <b>YELLOW / PRIORITY 2 Serious Injury or illness. Evacuation may be DELAYED if necessary.</b> <i>Ex: Significant trauma, unable to walk, 2° – 3° burns not more than 1-3 palm sizes.</i> <input type="checkbox"/> <b>GREEN / PRIORITY 3 Minor Injury or illness. Non-Emergency transport</b> <i>Ex: Sprains, strains, minor heat-related illness.</i>				
Nature of Injury or Illness & Mechanism of Injury			Brief Summary of Injury or Illness (Ex: Unconscious, Struck by Falling Tree)		
Transport Request			Air Ambulance / Short Haul/Hoist Ground Ambulance / Other		
Patient Location			Descriptive Location & Lat. / Long. (WGS84)		
Incident Name			Geographic Name + "Medical" (Ex: Trout Meadow Medical)		
On-Scene Incident Commander			Name of on-scene IC of Incident within an Incident (Ex: TFLD Jones)		
Patient Care			Name of Care Provider (Ex: EMT Smith)		
<b>3. INITIAL PATIENT ASSESSMENT:</b> Complete this section for each patient as applicable (start with the most severe patient)					
Patient Assessment: See IRPG PAGE 108					
Treatment:					
<b>4. TRANSPORT PLAN:</b>					
Evacuation Location (if different): (Descriptive Location (drop point, intersection, etc.) or Lat. / Long.) Patient's ETA to Evacuation Location:					
Helispot / Extraction Site Size and Hazards:					
<b>5. ADDITIONAL RESOURCES / EQUIPMENT NEEDS:</b>					
Example: Paramedic/EMT, Crews, Immobilization Devices, AED, Oxygen, Trauma Bag, IV/Fluid(s), Splints, Rope rescue, Wheeled litter, HAZMAT, Extrication					
<b>6. COMMUNICATIONS: Identify State Air/Ground EMS Frequencies and Hospital Contacts as applicable</b>					
Function	Channel Name/Number	Receive (RX)	Tone/NAC *	Transmit (TX)	Tone/NAC *
COMMAND					
AIR-TO-GRND					
TACTICAL					
<b>7. CONTINGENCY: Considerations:</b> If primary options fail, what actions can be implemented in conjunction with primary evacuation method? Be thinking ahead.					
<b>8. ADDITIONAL INFORMATION:</b> Updates/Changes, etc.					
<b>REMEMBER: Confirm ETA's of resources ordered. Act according to your level of training. Be Alert. Keep Calm. Think Clearly. Act Decisively.</b>					